

Geographic Spread



South Carolina reported **widespread activity** this week.

Influenza Indicators

Influenza Indicator	Change from Previous Week
Lab-confirmed tests	No Change
ILI Percent	No Change
Hospitalizations	Increased

Regional Influenza Activity



Increased



Increased



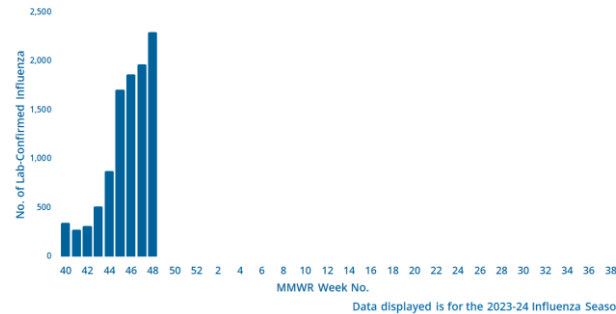
Increased



No Change

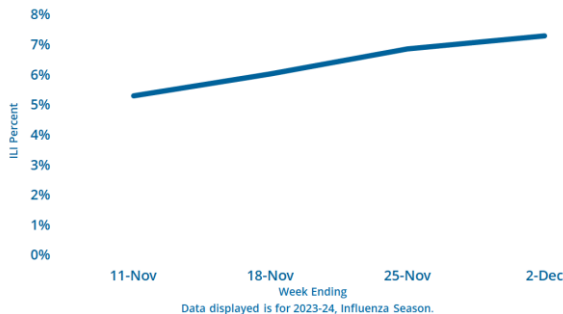
Virologic Surveillance

This week **2,283** lab-confirmed tests were reported. In the current flu season, there have been **10,042** lab-confirmed tests reported.



Influenza-Like Illness Surveillance

The percent of patient visits to sentinel providers for an influenza-like illness (ILI) was **7.3%**, which is **above** South Carolina's baseline (**3.2%**). The ILI activity level overall was **high**.



Influenza-Associated Hospitalizations

This week **155** influenza-associated hospitalizations were reported by **54** hospitals. The cumulative hospitalization rate is **10.3 per 100,000**. In the current flu season, there have been **521** influenza-associated hospitalizations.

Influenza-Associated Deaths

This week, **1** influenza-associated death was reported. The cumulative mortality rate is **0.1 per 100,000**. In the current flu season, there have been **6** influenza-associated deaths.

Virologic Surveillance

Lab-Confirmed Influenza Cases by Influenza Type to Date*

Influenza Type	No. of Cases (%)				
	This Week	2023-24	2022-23	2021-22	5 season average
Overall	2283	10042	41153	1758	8636
Influenza A	1058(46.3)	4537(45.2)	40418(98.2)	1681(95.6)	8444(97.8)
A(H3)	1(0.1)	6(0.1)	895(2.2)	80(4.8)	197(2.3)
A(H1N1)	102(9.6)	355(7.8)	1024(2.5)	85(5.1)	228(2.7)
A(NS)**	955(90.3)	4176(92.0)	38499(95.3)	1516(90.2)	8019(95.0)
Influenza B	1221(53.5)	5479(54.6)	681(1.7)	77(4.4)	181(2.1)
B (Victoria)	2(0.2)	55(1.0)	--	--	1(0.6)
B(Yamagata)	--	--	--	--	--
B (LND) [†]	1219(99.8)	5424(99.0)	681(100.0)	77(100.0)	180(99.4)
Influenza Virus Coinfection[§]	4(0.2)	26(0.3)	54(0.1)	--	11(0.1)

*Data presented from previous influenza seasons represents the data from that season through the same week as the current season. Nationally, the influenza season begins with MMWR week 40 and ends with MMWR week 39. The 2023-24 influenza season began on October 1, 2023 and will end on September 28, 2024.

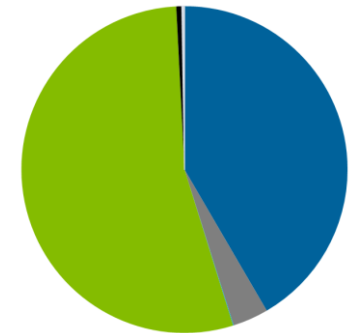
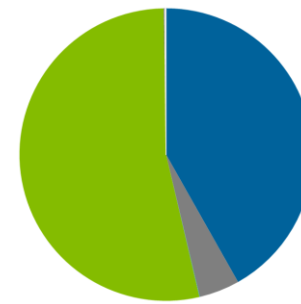
**NS - not subtyped †LND - lineage not determined

§Cases with more than one influenza A subtype in the same sample or with influenza A and B viral types in the same sample simultaneously.

Laboratory-Confirmed Influenza Cases, by Virus Type

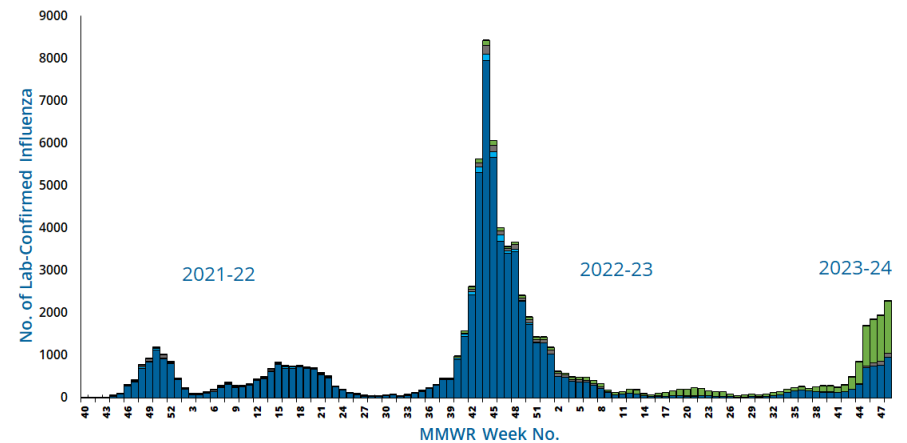
Week ending 12/2

Cumulative



■ A not subtyped ■ A(H1N1) ■ A (H3) ■ B (lineage not determined) ■ B (YAM) ■ B (VIC) ■ Co-infection

Laboratory-Confirmed Influenza Cases, 2021-22 Season to Present



■ A not subtyped ■ A(H1N1) ■ A (H3) ■ B (lineage not determined) ■ B (YAM) ■ B (VIC) ■ Co-infection

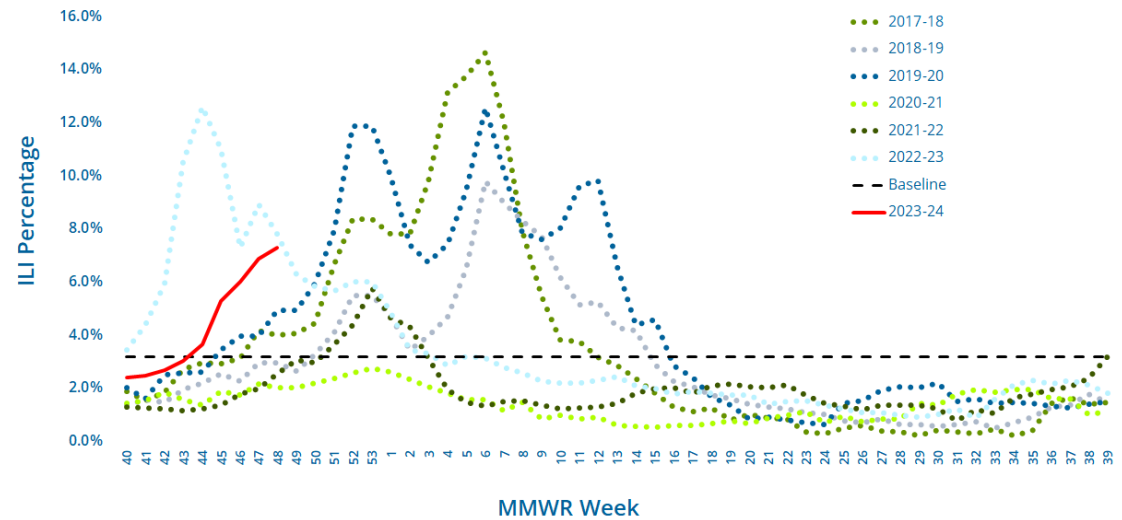
Influenza-Like Illness (ILI) Surveillance

This week, the ILI activity level was **high** and **7.3%** of patient visits to SC ILINet providers were attributed to an influenza-like illness. This is **above** the state baseline of **3.2%**.

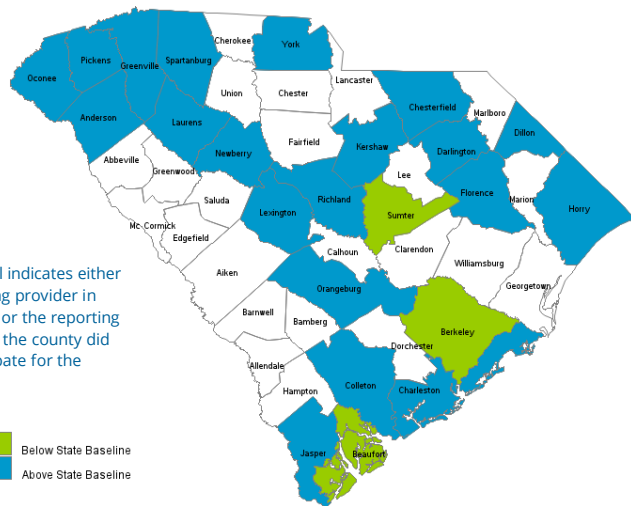
Reports were received from providers in **23** counties, representing all DHEC Public Health regions.

ILI percentage is dependent upon the number of reporting providers and/or can vary by disease activity or the number of providers submitting reports.

Percentage of Influenza-like Illness (ILI) Visits Reported by Sentinel Providers for Past and Current Seasons

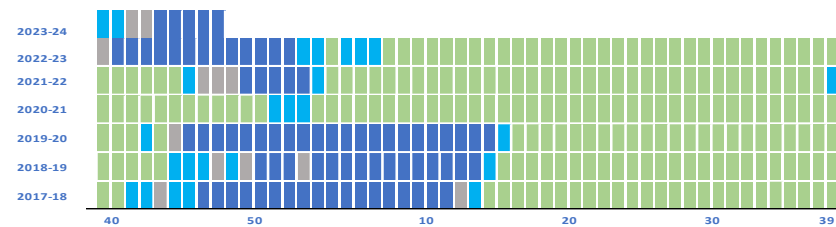


County ILI Percent



No color fill indicates either no reporting provider in the county or the reporting provider in the county did not participate for the week.

State ILI Activity Level by MMWR Week, 2017-18 Influenza Season to Present



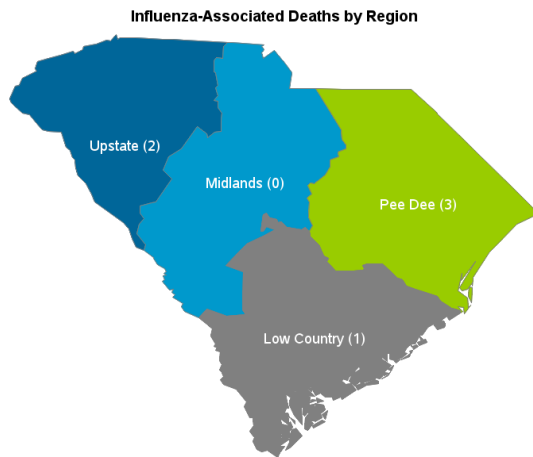
ILI ACTIVITY LEVELS: **MINIMAL** **LOW** **MODERATE** **HIGH**

Influenza-Associated Hospitalizations And Deaths

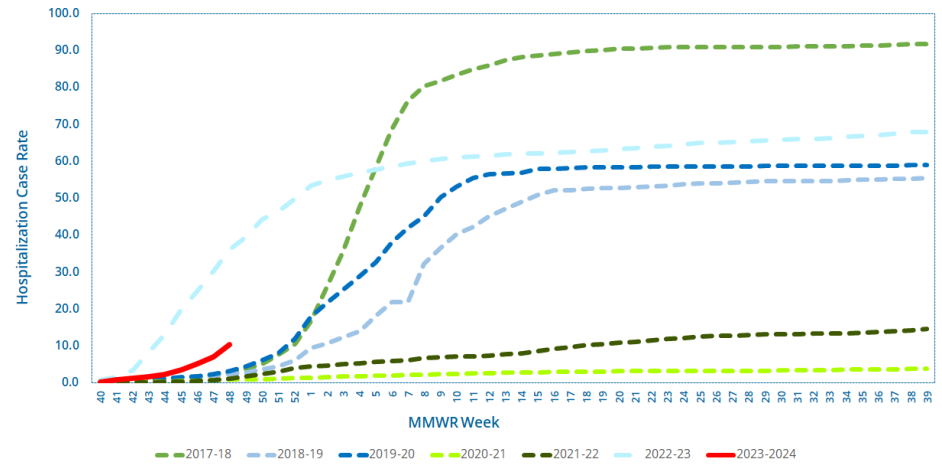
Influenza-Associated Hospitalizations by Age Group*						
Influenza Season	No. of Hospitalizations (Rate)					
	Overall	Ages 0-4	Ages 5-17	Ages 18-49	Ages 50-64	Ages 65+
This Week	155(3.1)	11(3.9)	11(1.3)	37(1.8)	42(4.2)	54(6.0)
2023-24	521(10.3)	24(8.4)	35(4.3)	120(5.8)	130(12.9)	212(23.5)
2022-23	1890(37.2)	62(21.7)	95(11.5)	378(18.4)	393(39.0)	962(106.7)
2021-22	63(1.2)	8(2.8)	1(0.1)	15(0.7)	8(0.8)	31(3.4)
5 season average	456(9.0)	19(6.7)	21(2.6)	92(4.5)	96(9.6)	228(25.3)

Influenza-Associated Deaths by Age Group*						
Influenza Season	No. of Deaths (Rate)					
	Overall	Ages 0-4	Ages 5-17	Ages 18-49	Ages 50-64	Ages 65+
This Week	1(0.0)	--	--	1(0.1)	--	--
2023-24	6(0.1)	--	--	1(0.1)	1(0.1)	4(0.4)
2022-23	53(1.0)	--	4(0.5)	--	8(0.8)	41(4.6)
2021-22	3(0.1)	--	--	--	1(0.1)	2(0.2)
5 season average	15(0.3)	--	1(0.1)	--	3(0.3)	11(1.3)

*Data presented from previous influenza seasons represents the data from that season through the same week as the current season. Nationally, the influenza season begins with MMWR week 40 and ends with MMWR week 39. The 2023-24 influenza season began on October 1, 2023 and will end on September 28, 2024.



Cumulative Hospitalization Rate for Past and Current Seasons



Reported Influenza-Associated Hospitalizations, 2021-22 Season to Present

