

Suicide

and Self-Inflicted Injuries in South Carolina

2016 DATA

White males age 45 to 64 are the most at-risk group

SUICIDE RATES AT A GLANCE



In the United States, SC ranked **23rd highest, in both overall suicide rates and teen suicides**, and **23rd highest in drug-related suicides**.



Suicide is the **10th leading cause of death** in the state.



The South Carolina suicide rate is **53% higher than the Healthy People 2020 target** and **16% higher than the national rate**.

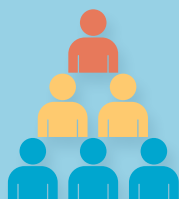


The suicide rate in South Carolina has **increased by 34% in the past 10 years (2006-2016)**.



Suicide deaths **have doubled since 1999** from 419 to 818 statewide.

THE IMPACT OF SELF-INFLICTED INJURIES



For **every person** that died by suicide in 2016 (n=818), **2 were hospitalized** (n=1791) and **3 were admitted to the emergency room** (n=2955) for self-inflicted injuries.

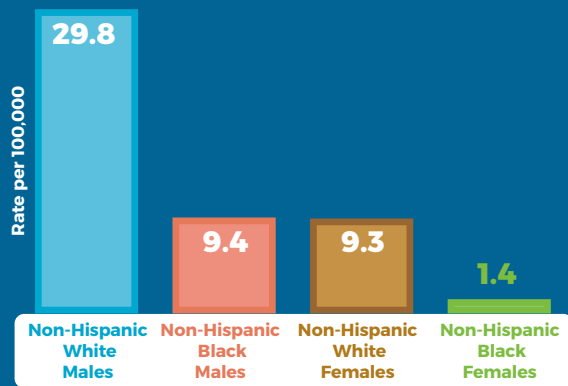


Self-inflicted injuries were responsible for:

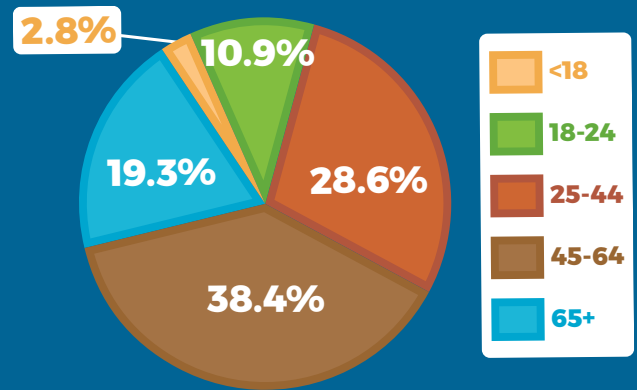
- **\$66 million** in hospital charges and
- **\$16 million** in emergency department charges.

SOUTH CAROLINA BY THE NUMBERS

Suicide by Sex and Race

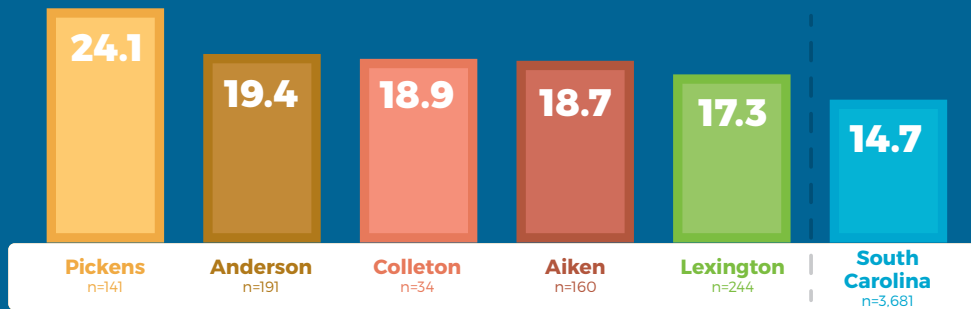


Suicide by Age

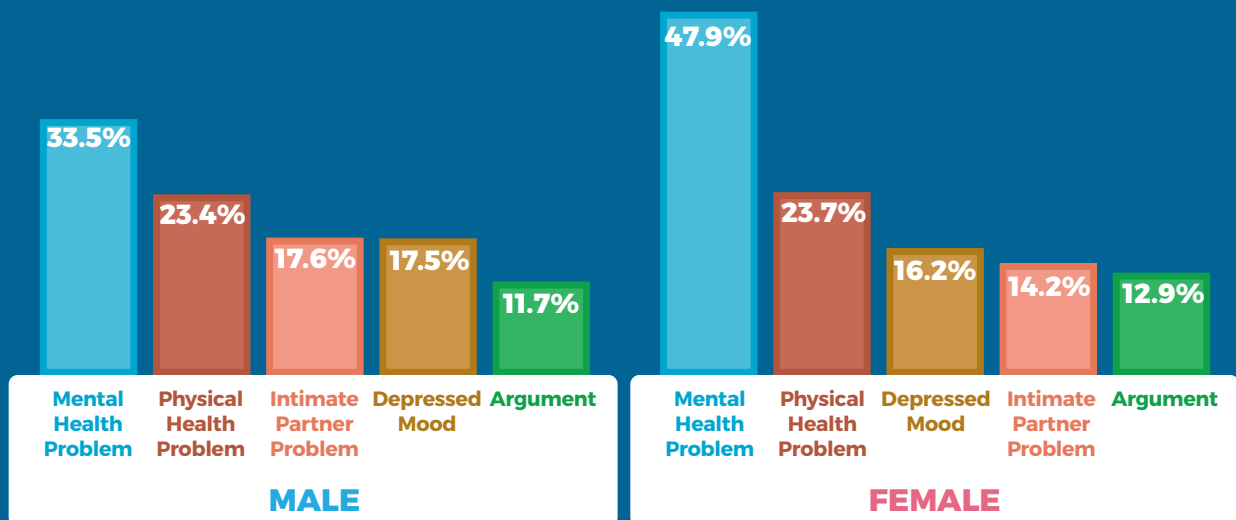


Counties with Highest Suicide Death Rates (2012-2016)

(Highest combined 5-year Suicide rate per 100,000 population)



Most Common Circumstances Related to Suicide (2015-2016)



www.scdhec.gov

CR-012365 6/19

Data Sources:

- WISQARS - Web-based Injury Statistics Query and Reporting System
- SCDHEC Vital Records - South Carolina Department of Health and Environmental Control Vital Records
- SCVDRS - South Carolina Violent Death Reporting System
- RFA Hospital Discharge Data - South Carolina Revenue and Fiscal Affairs Office Hospital Discharge Data

