

# Infant Mortality and Selected Birth Characteristics

---

2022 South Carolina Residence Data

**South Carolina Department of Health  
and Environmental Control**

**Vital Statistics**

2600 Bull Street  
Columbia, SC 29201

Phone: (803) 898-3649

Fax: (803) 898-3661



## Executive Summary

Infant mortality, defined as the death of a live-born baby before its first birthday, is a reflection of the overall state of a population's health. The infant mortality rate (IMR) is the number of babies who die within the first year of life per 1,000 live births. In the United States (US), the IMR is recognized as a leading health indicator and its reduction is a high-priority Healthy People 2030 objective.<sup>1</sup> The South Carolina Department of Health and Environmental Control (SC DHEC) monitors the IMR and administers programs aimed at improving the health of mothers, babies, and families across the state. In 2022, there were 392 infants who died during the first year of life, which is down from 416 in 2021.

From 2021 to 2022 the United States IMR increased by 3.1%, from 5.4 to 5.6 infant deaths per 1,000 live births.<sup>2</sup> However, SC's rate decreased over the same time frame by 6.8% from 7.3 in 2021 to 6.8 in 2022.

The IMR varied by race and ethnicity of the mother as shown in the tables and figures in the report. The IMR was lowest among births to non-Hispanic White women (5.2) and Hispanic women (4.1) in 2022 (Table 1). Comparatively, the IMR was more than twice as high among live births to non-Hispanic Black women (11.2). Although the racial disparity between non-Hispanic White and Black women decreased from 2.4 to 2.2 over the last year, the racial disparity in infant mortality remains a concern in SC.

The three leading causes of infant death in 2022 (Table 8) were congenital malformations or birth defects (71 deaths; 18.1% of total deaths), disorders related to short gestation and low birthweight (64 deaths; 16.3% of total deaths), and accidents (36 deaths; 9.2% of total deaths). Combined, these three categories account for over 2 in 5 infant deaths in 2022.

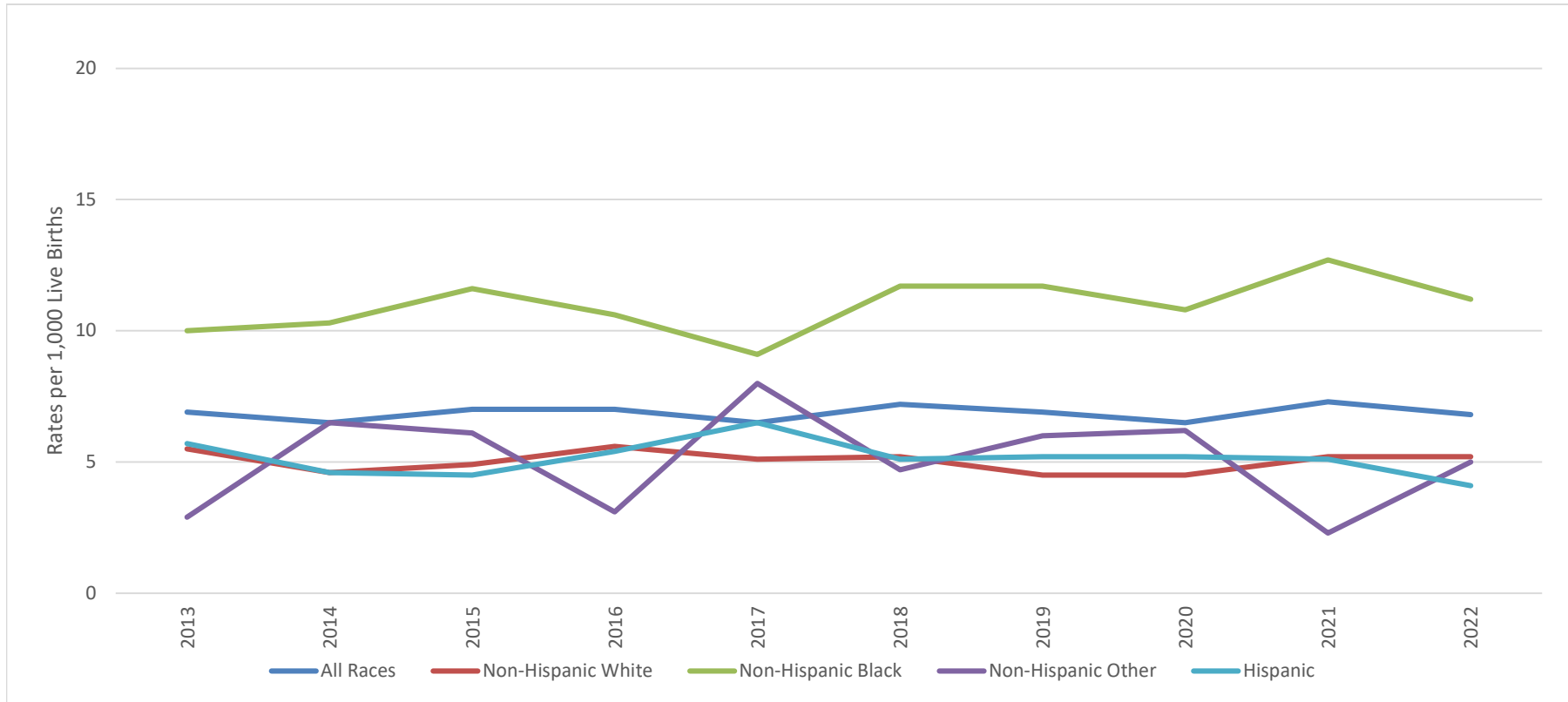
Deaths due to accidents had the largest increase (46.0%) over the past year, which increased the rank from fifth in 2021 to third in 2022 (Table 8-A). Of the 36 deaths due to accidents, 29 were caused by accidental suffocation and strangulation in bed (Table 9). While sudden infant death syndrome (SIDS) remained the fourth leading cause of infant death, SIDS had a 37.6% increase from 2021 to 2022.

SC DHEC administers many longstanding programs committed to improving the health of women and infants before, during, and after pregnancy. The agency and the State's Title V program continues to partner with organizations such as the SC Hospital Association, SC Department of Health and Human Services, and the SC Chapter of the March of Dimes and remains an active participant of the SC Birth Outcomes Initiative to address access to quality maternal, infant, and child health services, including preventive and primary care, access to prenatal, delivery, and postnatal care to women, and regular screenings and follow-up.

### References:

1. Healthy People 2030. Washington, DC: U.S. Department of Health and Human Services, Office of Disease Prevention and Health Promotion. Retrieved from <https://health.gov/healthypeople>.
2. Kochanek KD, Murphy SL, Xu JQ, Arias E. Mortality in the United States, 2022. NCHS Data Brief, no 492. Hyattsville, MD: National Center for Health Statistics. 2024. DOI: <https://dx.doi.org/10.15620/cdc:135850>

## South Carolina Infant Mortality Rates<sup>1</sup> by Race and Hispanic Origin of Mother Residence Data, 2013-2022



|                                 | 2013 | 2014 | 2015 | 2016 | 2017 | 2018 | 2019 | 2020 | 2021 | 2022 |
|---------------------------------|------|------|------|------|------|------|------|------|------|------|
| All Races                       | 6.9  | 6.5  | 7.0  | 7.0  | 6.5  | 7.2  | 6.9  | 6.5  | 7.3  | 6.8  |
| Non-Hispanic White              | 5.5  | 4.6  | 4.9  | 5.6  | 5.1  | 5.2  | 4.5  | 4.5  | 5.2  | 5.2  |
| Non-Hispanic Black              | 10.0 | 10.3 | 11.6 | 10.6 | 9.1  | 11.7 | 11.7 | 10.8 | 12.7 | 11.2 |
| Non-Hispanic Other <sup>2</sup> | 2.9  | 6.5  | 6.1  | 3.1  | 8.0  | 4.7  | 6.0  | 6.2  | 2.3  | 5.0  |
| Hispanic                        | 5.7  | 4.6  | 4.5  | 5.4  | 6.5  | 5.1  | 5.2  | 5.2  | 5.1  | 4.1  |

<sup>1</sup>Rates per 1,000 live births

<sup>2</sup>Rates per 1,000 live births. Rates calculated with 20 or fewer deaths are unreliable and should be used cautiously.

**Source:** SC DHEC, Vital Statistics

**Table 1.**  
 Infant Mortality Rates<sup>1</sup> with 95% Confidence Intervals<sup>2</sup>  
 South Carolina, 2013-2022  
 (Residence Data)

| Year | Number of Live Births | Number of Infant Deaths | Infant Mortality Rate | 95% Confidence Intervals |
|------|-----------------------|-------------------------|-----------------------|--------------------------|
| 2013 | 56,743                | 389                     | 6.9                   | (6.2, 7.6)               |
| 2014 | 57,631                | 372                     | 6.5                   | (5.8, 7.2)               |
| 2015 | 58,135                | 405                     | 7.0                   | (6.3, 7.7)               |
| 2016 | 57,337                | 401                     | 7.0                   | (6.3, 7.7)               |
| 2017 | 57,030                | 371                     | 6.5                   | (5.8, 7.2)               |
| 2018 | 56,668                | 406                     | 7.2                   | (6.5, 7.9)               |
| 2019 | 57,044                | 391                     | 6.9                   | (6.2, 7.6)               |
| 2020 | 55,713                | 364                     | 6.5                   | (5.9, 7.2)               |
| 2021 | 57,179                | 416                     | 7.3                   | (6.6, 8.0)               |
| 2022 | 57,828                | 392                     | 6.8                   | (6.1, 7.4)               |

**Table 2.**  
 Infant Mortality Rates<sup>1</sup> with 95% Confidence Intervals<sup>2</sup>  
 South Carolina  
 2013-2017, 2018-2022  
 (Residence Data)

| Years     | Number of Live Births | Number of Infant Deaths | Infant Mortality Rate | 95% Confidence Intervals |
|-----------|-----------------------|-------------------------|-----------------------|--------------------------|
| 2013-2017 | 286,876               | 1,938                   | 6.8                   | (6.5, 7.1)               |
| 2018-2022 | 284,432               | 1,969                   | 6.9                   | (6.6, 7.2)               |

<sup>1</sup>Rates per 1,000 live births

<sup>2</sup>  $r \pm 61.981 (r/n)^{1/2}$ , where r = infant mortality rate and n = number of live births

**Table 3.**  
**Infant, Neonatal and Postneonatal Mortality and Mortality Rates<sup>1</sup> by Race and Hispanic Origin of Mother**  
**South Carolina**  
**2018, 2019, 2020, 2021 and 2022**  
**(Residence Data)**

| <b>Infant Mortality</b> |                              |                                |             |                              |                                |             |                              |                                |             |                              |                                |             |                              |                                |             |
|-------------------------|------------------------------|--------------------------------|-------------|------------------------------|--------------------------------|-------------|------------------------------|--------------------------------|-------------|------------------------------|--------------------------------|-------------|------------------------------|--------------------------------|-------------|
|                         | <b>Total*</b>                |                                |             | <b>Non-Hispanic White</b>    |                                |             | <b>Non-Hispanic Black</b>    |                                |             | <b>Non-Hispanic Other</b>    |                                |             | <b>Hispanic</b>              |                                |             |
| <b>Year</b>             | <b>Number of Live Births</b> | <b>Number of Infant Deaths</b> | <b>Rate</b> | <b>Number of Live Births</b> | <b>Number of Infant Deaths</b> | <b>Rate</b> | <b>Number of Live Births</b> | <b>Number of Infant Deaths</b> | <b>Rate</b> | <b>Number of Live Births</b> | <b>Number of Infant Deaths</b> | <b>Rate</b> | <b>Number of Live Births</b> | <b>Number of Infant Deaths</b> | <b>Rate</b> |
| 2018                    | 56,668                       | 406                            | 7.2         | 32,575                       | 170                            | 5.2         | 17,268                       | 202                            | 11.7        | 1,689                        | 8                              | 4.7         | 5,136                        | 26                             | 5.1         |
| 2019                    | 57,044                       | 391                            | 6.9         | 32,316                       | 147                            | 4.5         | 17,475                       | 205                            | 11.7        | 1,660                        | 10                             | 6.0         | 5,593                        | 29                             | 5.2         |
| 2020                    | 55,713                       | 364                            | 6.5         | 31,232                       | 139                            | 4.5         | 17,051                       | 185                            | 10.8        | 1,614                        | 10                             | 6.2         | 5,816                        | 30                             | 5.2         |
| 2021                    | 57,179                       | 416                            | 7.3         | 32,550                       | 169                            | 5.2         | 16,733                       | 212                            | 12.7        | 1,764                        | 4                              | 2.3         | 6,132                        | 31                             | 5.1         |
| 2022                    | 57,828                       | 392                            | 6.8         | 32,832                       | 172                            | 5.2         | 16,402                       | 183                            | 11.2        | 1,784                        | 9                              | 5.0         | 6,810                        | 28                             | 4.1         |

| <b>Neonatal Mortality (&lt;28 days)</b> |                              |                                |             |                              |                                |             |                              |                                |             |                              |                                |             |                              |                                |             |
|---|------------------------------|--------------------------------|-------------|------------------------------|--------------------------------|-------------|------------------------------|--------------------------------|-------------|------------------------------|--------------------------------|-------------|------------------------------|--------------------------------|-------------|
|   | <b>Total*</b>                |                                |             | <b>Non-Hispanic White</b>    |                                |             | <b>Non-Hispanic Black</b>    |                                |             | <b>Non-Hispanic Other</b>    |                                |             | <b>Hispanic</b>              |                                |             |
| <b>Year</b>                             | <b>Number of Live Births</b> | <b>Number of Infant Deaths</b> | <b>Rate</b> | <b>Number of Live Births</b> | <b>Number of Infant Deaths</b> | <b>Rate</b> | <b>Number of Live Births</b> | <b>Number of Infant Deaths</b> | <b>Rate</b> | <b>Number of Live Births</b> | <b>Number of Infant Deaths</b> | <b>Rate</b> | <b>Number of Live Births</b> | <b>Number of Infant Deaths</b> | <b>Rate</b> |
| 2018                                    | 56,668                       | 272                            | 4.8         | 32,575                       | 113                            | 3.5         | 17,268                       | 136                            | 7.9         | 1,689                        | 3                              | 1.8         | 5,136                        | 20                             | 3.9         |
| 2019                                    | 57,044                       | 256                            | 4.5         | 32,316                       | 93                             | 2.9         | 17,475                       | 138                            | 7.9         | 1,660                        | 6                              | 3.6         | 5,593                        | 19                             | 3.4         |
| 2020                                    | 55,713                       | 247                            | 4.4         | 31,232                       | 100                            | 3.2         | 17,051                       | 122                            | 7.2         | 1,614                        | 7                              | 4.3         | 5,816                        | 18                             | 3.1         |
| 2021                                    | 57,179                       | 269                            | 4.7         | 32,550                       | 108                            | 3.3         | 16,733                       | 134                            | 8.0         | 1,764                        | 3                              | 1.7         | 6,132                        | 24                             | 3.9         |
| 2022                                    | 57,828                       | 256                            | 4.4         | 32,832                       | 102                            | 3.1         | 16,402                       | 121                            | 7.4         | 1,784                        | 7                              | 3.9         | 6,810                        | 26                             | 3.8         |

| <b>Postneonatal Mortality (28-364 days)</b> |                              |                                |             |                              |                                |             |                              |                                |             |                              |                                |             |                              |                                |             |
|---|------------------------------|--------------------------------|-------------|------------------------------|--------------------------------|-------------|------------------------------|--------------------------------|-------------|------------------------------|--------------------------------|-------------|------------------------------|--------------------------------|-------------|
|   | <b>Total*</b>                |                                |             | <b>Non-Hispanic White</b>    |                                |             | <b>Non-Hispanic Black</b>    |                                |             | <b>Non-Hispanic Other</b>    |                                |             | <b>Hispanic</b>              |                                |             |
| <b>Year</b>                                 | <b>Number of Live Births</b> | <b>Number of Infant Deaths</b> | <b>Rate</b> | <b>Number of Live Births</b> | <b>Number of Infant Deaths</b> | <b>Rate</b> | <b>Number of Live Births</b> | <b>Number of Infant Deaths</b> | <b>Rate</b> | <b>Number of Live Births</b> | <b>Number of Infant Deaths</b> | <b>Rate</b> | <b>Number of Live Births</b> | <b>Number of Infant Deaths</b> | <b>Rate</b> |
| 2018  | 56,668                       | 134                            | 2.4         | 32,575                       | 57                             | 1.7         | 17,268                       | 66                             | 3.8         | 1,689                        | 5                              | 3.0         | 5,136                        | 6                              | 1.2         |
| 2019  | 57,044                       | 135                            | 2.4         | 32,316                       | 54                             | 1.7         | 17,475                       | 67                             | 3.8         | 1,660                        | 4                              | 2.4         | 5,593                        | 10                             | 1.8         |
| 2020  | 55,713                       | 117                            | 2.1         | 31,232                       | 39                             | 1.2         | 17,051                       | 63                             | 3.7         | 1,614                        | 3                              | 1.9         | 5,816                        | 12                             | 2.1         |
| 2021  | 57,179                       | 147                            | 2.6         | 32,550                       | 61                             | 1.9         | 16,733                       | 78                             | 4.7         | 1,764                        | 1                              | 0.6         | 6,132                        | 7                              | 1.1         |
| 2022  | 57,828                       | 136                            | 2.4         | 32,832                       | 70                             | 2.1         | 16,402                       | 62                             | 3.8         | 1,784                        | 2                              | 1.1         | 6,810                        | 2                              | 0.3         |

<sup>1</sup>Rates per 1,000 live births

\*Includes unknown race/ethnicity of mother

**Table 4.**  
**Infant Mortality and Infant Mortality Rates<sup>1</sup>**  
**South Carolina and Each County, 2022, 2020-2022, 2017-2019**  
**(Residence Data)**

| County of Residence   | 2022   |      | 2020-2022 |      | 2017-2019 |      |
|-----------------------|--------|------|-----------|------|-----------|------|
|                       | Number | Rate | Number    | Rate | Number    | Rate |
| <b>South Carolina</b> | 392    | 6.8  | 1,172     | 6.9  | 1,168     | 6.8  |
| Abbeville             | 0      | 0.0  | 8         | 11.8 | 5         | 6.9  |
| Aiken                 | 14     | 7.1  | 37        | 6.4  | 49        | 8.8  |
| Allendale             | 0      | 0.0  | <5        | -    | 0         | 0.0  |
| Anderson              | 16     | 6.6  | 50        | 7.3  | 41        | 6.1  |
| Bamberg               | 0      | 0.0  | <5        | -    | 6         | 14.5 |
| Barnwell              | <5     | -    | 6         | 7.9  | 9         | 12.0 |
| Beaufort              | 9      | 4.9  | 35        | 6.3  | 23        | 4.0  |
| Berkeley              | 21     | 6.9  | 50        | 5.7  | 43        | 5.1  |
| Calhoun               | 0      | 0.0  | <5        | -    | 5         | 12.4 |
| Charleston            | 39     | 7.8  | 100       | 6.7  | 87        | 6.0  |
| Cherokee              | 6      | 9.7  | 14        | 7.3  | 16        | 8.1  |
| Chester               | 5      | 15.9 | 11        | 11.3 | 12        | 10.7 |
| Chesterfield          | 7      | 14.1 | 16        | 10.9 | 14        | 9.4  |
| Clarendon             | <5     | -    | 11        | 12.4 | 9         | 9.5  |
| Colleton              | 6      | 14.6 | 11        | 8.4  | 15        | 10.9 |
| Darlington            | 5      | 6.8  | 15        | 6.7  | 18        | 7.9  |
| Dillon                | 0      | 0.0  | 9         | 8.0  | 13        | 10.3 |
| Dorchester            | 10     | 4.8  | 29        | 4.9  | 34        | 6.1  |
| Edgefield             | 0      | 0.0  | <5        | -    | <5        | -    |
| Fairfield             | <5     | -    | 8         | 14.2 | 5         | 8.1  |
| Florence              | 19     | 11.9 | 54        | 11.3 | 63        | 12.8 |
| Georgetown            | <5     | -    | 7         | 4.8  | 12        | 7.6  |
| Greenville            | 26     | 4.0  | 97        | 5.0  | 119       | 6.3  |
| Greenwood             | 6      | 8.3  | 17        | 7.5  | 21        | 8.5  |
| Hampton               | <5     | -    | 10        | 16.8 | <5        | -    |
| Horry                 | 23     | 6.9  | 62        | 6.4  | 58        | 6.1  |
| Jasper                | <5     | -    | 8         | 7.0  | 10        | 9.2  |
| Kershaw               | 5      | 6.3  | 15        | 6.7  | 10        | 4.5  |
| Lancaster             | <5     | -    | 14        | 4.3  | 21        | 7.0  |
| Laurens               | 6      | 8.0  | 18        | 8.2  | 13        | 5.5  |
| Lee                   | <5     | -    | 7         | 14.4 | 7         | 13.2 |
| Lexington             | 22     | 6.6  | 54        | 5.5  | 64        | 6.6  |
| McCormick             | 0      | 0.0  | <5        | -    | <5        | -    |
| Marion                | <5     | -    | 10        | 10.4 | 12        | 11.8 |
| Marlboro              | <5     | -    | 7         | 8.9  | 7         | 8.3  |
| Newberry              | 8      | 18.9 | 20        | 16.3 | 11        | 8.9  |
| Oconee                | 9      | 12.4 | 18        | 9.0  | 20        | 9.5  |
| Orangeburg            | 9      | 10.6 | 34        | 13.5 | 27        | 9.3  |
| Pickens               | 12     | 9.4  | 26        | 7.2  | 18        | 5.0  |
| Richland              | 29     | 6.5  | 98        | 7.2  | 103       | 7.3  |
| Saluda                | <5     | -    | 5         | 7.0  | 8         | 12.0 |
| Spartanburg           | 22     | 5.2  | 69        | 5.8  | 63        | 5.4  |
| Sumter                | 16     | 12.0 | 43        | 10.6 | 25        | 6.0  |
| Union                 | <5     | -    | 10        | 12.9 | <5        | -    |
| Williamsburg          | <5     | -    | <5        | -    | 12        | 13.1 |
| York                  | 12     | 4.1  | 47        | 5.3  | 46        | 5.2  |

<sup>1</sup>Rates per 1,000 live births. Rates calculated with 20 or fewer deaths are unreliable and should be used cautiously.

**Table 4-A.**

Non-Hispanic White<sup>1</sup> Infant Mortality and Infant Mortality Rates<sup>2</sup>  
 South Carolina and Each County, 2022, 2020-2022, 2017-2019  
 (Residence Data)

| County of Residence   | 2022   |      | 2020-2022 |      | 2017-2019 |      |
|-----------------------|--------|------|-----------|------|-----------|------|
|                       | Number | Rate | Number    | Rate | Number    | Rate |
| <b>South Carolina</b> | 172    | 5.2  | 480       | 5.0  | 484       | 5.0  |
| Abbeville             | 0      | 0.0  | <5        | -    | <5        | -    |
| Aiken                 | 8      | 6.7  | 15        | 4.4  | 25        | 7.2  |
| Allendale             | 0      | 0.0  | 0         | 0.0  | 0         | 0.0  |
| Anderson              | 7      | 4.0  | 24        | 4.8  | 30        | 6.0  |
| Bamberg               | 0      | 0.0  | 0         | 0.0  | 0         | 0.0  |
| Barnwell              | <5     | -    | <5        | -    | <5        | -    |
| Beaufort              | <5     | -    | 11        | 3.7  | 10        | 3.3  |
| Berkeley              | 12     | 7.2  | 24        | 4.9  | 18        | 3.6  |
| Calhoun               | 0      | 0.0  | 0         | 0.0  | <5        | -    |
| Charleston            | 16     | 5.2  | 42        | 4.7  | 25        | 2.9  |
| Cherokee              | <5     | -    | 10        | 7.7  | 9         | 6.8  |
| Chester               | <5     | -    | 6         | 11.0 | 5         | 8.4  |
| Chesterfield          | 5      | 16.5 | 9         | 10.7 | 6         | 7.1  |
| Clarendon             | <5     | -    | <5        | -    | <5        | -    |
| Colleton              | <5     | -    | 6         | 8.5  | 6         | 8.2  |
| Darlington            | 0      | 0.0  | 6         | 5.6  | 8         | 7.5  |
| Dillon                | 0      | 0.0  | <5        | -    | <5        | -    |
| Dorchester            | <5     | -    | 11        | 3.3  | 16        | 4.8  |
| Edgefield             | 0      | 0.0  | <5        | -    | 0         | 0.0  |
| Fairfield             | <5     | -    | <5        | -    | <5        | -    |
| Florence              | 6      | 8.9  | 13        | 6.2  | 21        | 10.1 |
| Georgetown            | <5     | -    | 5         | 6.2  | 7         | 8.5  |
| Greenville            | 10     | 2.6  | 41        | 3.5  | 50        | 4.3  |
| Greenwood             | <5     | -    | <5        | -    | <5        | -    |
| Hampton               | 0      | 0.0  | <5        | -    | <5        | -    |
| Horry                 | 10     | 4.9  | 31        | 5.1  | 25        | 4.0  |
| Jasper                | <5     | -    | <5        | -    | <5        | -    |
| Kershaw               | <5     | -    | 8         | 5.8  | 7         | 4.8  |
| Lancaster             | <5     | -    | 10        | 4.6  | 10        | 4.9  |
| Laurens               | <5     | -    | 6         | 4.3  | 5         | 3.3  |
| Lee                   | <5     | -    | <5        | -    | <5        | -    |
| Lexington             | 10     | 4.8  | 29        | 4.6  | 36        | 5.5  |
| McCormick             | 0      | 0.0  | 0         | 0.0  | 0         | 0.0  |
| Marion                | 0      | 0.0  | <5        | -    | <5        | -    |
| Marlboro              | 0      | 0.0  | <5        | -    | <5        | -    |
| Newberry              | <5     | -    | <5        | -    | <5        | -    |
| Oconee                | 7      | 12.4 | 15        | 9.2  | 19        | 11.1 |
| Orangeburg            | <5     | -    | <5        | -    | <5        | -    |
| Pickens               | 10     | 9.6  | 22        | 7.4  | 17        | 5.6  |
| Richland              | 7      | 4.8  | 17        | 3.8  | 18        | 3.7  |
| Saluda                | <5     | -    | <5        | -    | <5        | -    |
| Spartanburg           | 15     | 5.5  | 42        | 5.5  | 36        | 4.8  |
| Sumter                | 6      | 11.0 | 18        | 11.0 | 11        | 6.2  |
| Union                 | <5     | -    | <5        | -    | <5        | -    |
| Williamsburg          | <5     | -    | <5        | -    | <5        | -    |
| York                  | 6      | 3.1  | 17        | 3.0  | 24        | 4.2  |

<sup>1</sup>Race/Ethnicity of mother<sup>2</sup>Rates per 1,000 live births. Rates calculated with 20 or fewer deaths are unreliable and should be used cautiously.

**Table 4-B.**

Non-Hispanic Black<sup>1</sup> Infant Mortality and Infant Mortality Rates<sup>2</sup>  
 South Carolina and Each County, 2022, 2020-2022, 2017-2019  
 (Residence Data)

| County of Residence   | 2022   |      | 2020-2022 |      | 2017-2019 |      |
|-----------------------|--------|------|-----------|------|-----------|------|
|                       | Number | Rate | Number    | Rate | Number    | Rate |
| <b>South Carolina</b> | 183    | 11.2 | 580       | 11.6 | 565       | 10.8 |
| Abbeville             | 0      | 0.0  | 6         | 32.1 | <5        | -    |
| Aiken                 | <5     | -    | 19        | 11.1 | 20        | 12.3 |
| Allendale             | 0      | 0.0  | <5        | -    | 0         | 0.0  |
| Anderson              | 6      | 13.6 | 21        | 16.6 | 10        | 7.9  |
| Bamberg               | 0      | 0.0  | <5        | -    | 6         | 25.2 |
| Barnwell              | 0      | 0.0  | <5        | -    | 5         | 14.0 |
| Beaufort              | <5     | -    | 16        | 13.4 | 12        | 9.2  |
| Berkeley              | 8      | 10.2 | 20        | 9.1  | 17        | 8.3  |
| Calhoun               | 0      | 0.0  | <5        | -    | <5        | -    |
| Charleston            | 20     | 17.8 | 49        | 13.5 | 55        | 13.5 |
| Cherokee              | <5     | -    | <5        | -    | 7         | 13.9 |
| Chester               | <5     | -    | 5         | 12.8 | 7         | 14.1 |
| Chesterfield          | <5     | -    | 7         | 13.3 | 7         | 12.7 |
| Clarendon             | <5     | -    | 7         | 15.8 | 6         | 11.8 |
| Colleton              | <5     | -    | <5        | -    | 8         | 14.1 |
| Darlington            | 5      | 14.5 | 9         | 8.5  | 9         | 7.9  |
| Dillon                | 0      | 0.0  | <5        | -    | 8         | 11.8 |
| Dorchester            | <5     | -    | 14        | 8.3  | 15        | 9.7  |
| Edgefield             | 0      | 0.0  | <5        | -    | <5        | -    |
| Fairfield             | <5     | -    | <5        | -    | <5        | -    |
| Florence              | 13     | 16.0 | 37        | 15.6 | 40        | 15.7 |
| Georgetown            | 0      | 0.0  | <5        | -    | <5        | -    |
| Greenville            | 9      | 7.3  | 36        | 9.5  | 48        | 12.6 |
| Greenwood             | 5      | 20.7 | 13        | 15.6 | 13        | 13.5 |
| Hampton               | <5     | -    | 8         | 24.8 | <5        | -    |
| Horry                 | 11     | 17.5 | 27        | 15.2 | 24        | 13.4 |
| Jasper                | <5     | -    | <5        | -    | <5        | -    |
| Kershaw               | <5     | -    | 5         | 8.3  | <5        | -    |
| Lancaster             | <5     | -    | <5        | -    | 9         | 13.0 |
| Laurens               | <5     | -    | 9         | 15.6 | 8         | 12.3 |
| Lee                   | <5     | -    | 6         | 18.4 | <5        | -    |
| Lexington             | 11     | 16.1 | 20        | 9.9  | 19        | 10.7 |
| McCormick             | 0      | 0.0  | <5        | -    | <5        | -    |
| Marion                | <5     | -    | 9         | 14.3 | 9         | 13.7 |
| Marlboro              | <5     | -    | 6         | 15.3 | 5         | 11.2 |
| Newberry              | 6      | 38.5 | 14        | 31.0 | 8         | 17.8 |
| Oconee                | <5     | -    | <5        | -    | <5        | -    |
| Orangeburg            | 7      | 12.7 | 29        | 17.8 | 24        | 12.6 |
| Pickens               | <5     | -    | <5        | -    | 0         | 0.0  |
| Richland              | 21     | 8.6  | 75        | 9.9  | 68        | 8.8  |
| Saluda                | <5     | -    | <5        | -    | <5        | -    |
| Spartanburg           | 5      | 5.8  | 18        | 7.1  | 21        | 8.2  |
| Sumter                | 10     | 14.6 | 25        | 11.9 | 13        | 6.4  |
| Union                 | <5     | -    | 7         | 26.9 | 0         | 0.0  |
| Williamsburg          | 0      | 0.0  | <5        | -    | 10        | 16.1 |
| York                  | <5     | -    | 20        | 10.0 | 19        | 9.1  |

<sup>1</sup>Race/Ethnicity of mother

<sup>2</sup>Rates per 1,000 live births. Rates calculated with 20 or fewer deaths are unreliable and should be used cautiously.



**Table 4-C.**

Non-Hispanic Other<sup>1</sup> Infant Mortality and Infant Mortality Rates<sup>2</sup>  
 South Carolina and Each County, 2022, 2020-2022, 2017-2019  
 (Residence Data)

| County of Residence   | 2022   |      | 2020-2022 |      | 2017-2019 |      |
|-----------------------|--------|------|-----------|------|-----------|------|
|                       | Number | Rate | Number    | Rate | Number    | Rate |
| <b>South Carolina</b> | 9      | 5.0  | 23        | 4.5  | 31        | 6.2  |
| Abbeville             | 0      | 0.0  | 0         | 0.0  | 0         | 0.0  |
| Aiken                 | <5     | -    | <5        | -    | <5        | -    |
| Allendale             | 0      | 0.0  | 0         | 0.0  | 0         | 0.0  |
| Anderson              | 0      | 0.0  | 0         | 0.0  | 0         | 0.0  |
| Bamberg               | 0      | 0.0  | 0         | 0.0  | 0         | 0.0  |
| Barnwell              | 0      | 0.0  | 0         | 0.0  | 0         | 0.0  |
| Beaufort              | <5     | -    | <5        | -    | 0         | 0.0  |
| Berkeley              | 0      | 0.0  | <5        | -    | <5        | -    |
| Calhoun               | 0      | 0.0  | 0         | 0.0  | 0         | 0.0  |
| Charleston            | 0      | 0.0  | 0         | 0.0  | <5        | -    |
| Cherokee              | 0      | 0.0  | 0         | 0.0  | 0         | 0.0  |
| Chester               | 0      | 0.0  | 0         | 0.0  | 0         | 0.0  |
| Chesterfield          | 0      | 0.0  | 0         | 0.0  | <5        | -    |
| Clarendon             | 0      | 0.0  | 0         | 0.0  | 0         | 0.0  |
| Colleton              | 0      | 0.0  | 0         | 0.0  | <5        | -    |
| Darlington            | 0      | 0.0  | 0         | 0.0  | <5        | -    |
| Dillon                | 0      | 0.0  | <5        | -    | <5        | -    |
| Dorchester            | 0      | 0.0  | <5        | -    | <5        | -    |
| Edgefield             | 0      | 0.0  | 0         | 0.0  | 0         | 0.0  |
| Fairfield             | 0      | 0.0  | 0         | 0.0  | 0         | 0.0  |
| Florence              | 0      | 0.0  | 0         | 0.0  | <5        | -    |
| Georgetown            | 0      | 0.0  | 0         | 0.0  | 0         | 0.0  |
| Greenville            | <5     | -    | <5        | -    | <5        | -    |
| Greenwood             | 0      | 0.0  | 0         | 0.0  | 0         | 0.0  |
| Hampton               | 0      | 0.0  | 0         | 0.0  | 0         | 0.0  |
| Horry                 | <5     | -    | <5        | -    | <5        | -    |
| Jasper                | 0      | 0.0  | 0         | 0.0  | 0         | 0.0  |
| Kershaw               | 0      | 0.0  | 0         | 0.0  | 0         | 0.0  |
| Lancaster             | 0      | 0.0  | 0         | 0.0  | 0         | 0.0  |
| Laurens               | 0      | 0.0  | 0         | 0.0  | 0         | 0.0  |
| Lee                   | 0      | 0.0  | 0         | 0.0  | 0         | 0.0  |
| Lexington             | <5     | -    | <5        | -    | <5        | -    |
| McCormick             | 0      | 0.0  | 0         | 0.0  | 0         | 0.0  |
| Marion                | 0      | 0.0  | 0         | 0.0  | 0         | 0.0  |
| Marlboro              | 0      | 0.0  | 0         | 0.0  | <5        | -    |
| Newberry              | 0      | 0.0  | 0         | 0.0  | 0         | 0.0  |
| Oconee                | 0      | 0.0  | <5        | -    | 0         | 0.0  |
| Orangeburg            | 0      | 0.0  | 0         | 0.0  | 0         | 0.0  |
| Pickens               | 0      | 0.0  | 0         | 0.0  | 0         | 0.0  |
| Richland              | 0      | 0.0  | <5        | -    | 6         | 11.7 |
| Saluda                | 0      | 0.0  | 0         | 0.0  | 0         | 0.0  |
| Spartanburg           | <5     | -    | <5        | -    | <5        | -    |
| Sumter                | 0      | 0.0  | 0         | 0.0  | 0         | 0.0  |
| Union                 | 0      | 0.0  | 0         | 0.0  | 0         | 0.0  |
| Williamsburg          | 0      | 0.0  | 0         | 0.0  | <5        | -    |
| York                  | <5     | -    | <5        | -    | <5        | -    |

<sup>1</sup>Race/Ethnicity of mother<sup>2</sup>Rates per 1,000 live births. Rates calculated with 20 or fewer deaths are unreliable and should be used cautiously.

**Table 4-D.**  
**Hispanic<sup>1</sup> Infant Mortality and Infant Mortality Rates<sup>2</sup>**  
**South Carolina and Each County, 2022, 2020-2022, 2017-2019**  
**(Residence Data)**

| County of Residence   | 2022   |      | 2020-2022 |      | 2017-2019 |      |
|-----------------------|--------|------|-----------|------|-----------|------|
|                       | Number | Rate | Number    | Rate | Number    | Rate |
| <b>South Carolina</b> | 28     | 4.1  | 89        | 4.7  | 88        | 5.6  |
| Abbeville             | 0      | 0.0  | 0         | 0.0  | 0         | 0.0  |
| Aiken                 | <5     | -    | <5        | -    | <5        | -    |
| Allendale             | 0      | 0.0  | 0         | 0.0  | 0         | 0.0  |
| Anderson              | <5     | -    | 5         | 10.1 | <5        | -    |
| Bamberg               | 0      | 0.0  | 0         | 0.0  | 0         | 0.0  |
| Barnwell              | 0      | 0.0  | 0         | 0.0  | 0         | 0.0  |
| Beaufort              | 5      | 12.0 | 7         | 5.7  | <5        | -    |
| Berkeley              | <5     | -    | <5        | -    | 6         | 5.8  |
| Calhoun               | 0      | 0.0  | 0         | 0.0  | 0         | 0.0  |
| Charleston            | <5     | -    | 9         | 4.6  | <5        | -    |
| Cherokee              | <5     | -    | <5        | -    | 0         | 0.0  |
| Chester               | 0      | 0.0  | 0         | 0.0  | 0         | 0.0  |
| Chesterfield          | 0      | 0.0  | 0         | 0.0  | 0         | 0.0  |
| Clarendon             | 0      | 0.0  | 0         | 0.0  | <5        | -    |
| Colleton              | 0      | 0.0  | <5        | -    | 0         | 0.0  |
| Darlington            | 0      | 0.0  | 0         | 0.0  | 0         | 0.0  |
| Dillon                | 0      | 0.0  | 0         | 0.0  | 0         | 0.0  |
| Dorchester            | <5     | -    | <5        | -    | <5        | -    |
| Edgefield             | 0      | 0.0  | 0         | 0.0  | 0         | 0.0  |
| Fairfield             | 0      | 0.0  | 0         | 0.0  | 0         | 0.0  |
| Florence              | 0      | 0.0  | <5        | -    | <5        | -    |
| Georgetown            | 0      | 0.0  | <5        | -    | <5        | -    |
| Greenville            | 6      | 4.9  | 19        | 5.7  | 18        | 6.4  |
| Greenwood             | 0      | 0.0  | 0         | 0.0  | 5         | 19.3 |
| Hampton               | 0      | 0.0  | 0         | 0.0  | 0         | 0.0  |
| Horry                 | 0      | 0.0  | <5        | -    | 8         | 6.6  |
| Jasper                | 0      | 0.0  | <5        | -    | <5        | -    |
| Kershaw               | 0      | 0.0  | <5        | -    | 0         | 0.0  |
| Lancaster             | 0      | 0.0  | <5        | -    | <5        | -    |
| Laurens               | <5     | -    | <5        | -    | 0         | 0.0  |
| Lee                   | 0      | 0.0  | 0         | 0.0  | <5        | -    |
| Lexington             | 0      | 0.0  | <5        | -    | 8         | 7.8  |
| McCormick             | 0      | 0.0  | 0         | 0.0  | 0         | 0.0  |
| Marion                | 0      | 0.0  | 0         | 0.0  | 0         | 0.0  |
| Marlboro              | 0      | 0.0  | 0         | 0.0  | 0         | 0.0  |
| Newberry              | 0      | 0.0  | <5        | -    | 0         | 0.0  |
| Oconee                | 0      | 0.0  | 0         | 0.0  | 0         | 0.0  |
| Orangeburg            | <5     | -    | <5        | -    | <5        | -    |
| Pickens               | 0      | 0.0  | 0         | 0.0  | <5        | -    |
| Richland              | <5     | -    | <5        | -    | 11        | 10.6 |
| Saluda                | 0      | 0.0  | <5        | -    | <5        | -    |
| Spartanburg           | <5     | -    | 7         | 5.2  | <5        | -    |
| Sumter                | 0      | 0.0  | 0         | 0.0  | <5        | -    |
| Union                 | 0      | 0.0  | 0         | 0.0  | 0         | 0.0  |
| Williamsburg          | 0      | 0.0  | 0         | 0.0  | 0         | 0.0  |
| York                  | <5     | -    | 6         | 12.3 | 0         | 0.0  |

<sup>1</sup>Race/Ethnicity of mother

<sup>2</sup>Rates per 1,000 live births. Rates calculated with 20 or fewer deaths are unreliable and should be used cautiously.

**Table 5.**

Infant, Neonatal and Postneonatal Mortality Rates<sup>1</sup> by Race and Hispanic Origin of Mother  
and Percent Change from 2021 to 2022  
South Carolina  
(Residence Data)

| <b>Infant Mortality</b> |       |                    |                    |                    |          |
|-------------------------|-------|--------------------|--------------------|--------------------|----------|
| Year                    | Total | Non-Hispanic White | Non-Hispanic Black | Non-Hispanic Other | Hispanic |
| 2021                    | 7.3   | 5.2                | 12.7               | 2.3                | 5.1      |
| 2022                    | 6.8   | 5.2                | 11.2               | 5.0                | 4.1      |
| <b>Percent Change</b>   | -6.8% | 0.0%               | -11.8%             | 117.4%             | -19.6%   |

| <b>Neonatal Mortality</b> |       |                    |                    |                    |          |
|---------------------------|-------|--------------------|--------------------|--------------------|----------|
| Year                      | Total | Non-Hispanic White | Non-Hispanic Black | Non-Hispanic Other | Hispanic |
| 2021                      | 4.7   | 3.3                | 8.0                | 1.7                | 3.9      |
| 2022                      | 4.4   | 3.1                | 7.4                | 3.9                | 3.8      |
| <b>Percent Change</b>     | -6.4% | -6.1%              | -7.5%              | 129.4%             | -2.6%    |

| <b>Postneonatal Mortality</b> |       |                    |                    |                    |          |
|-------------------------------|-------|--------------------|--------------------|--------------------|----------|
| Year                          | Total | Non-Hispanic White | Non-Hispanic Black | Non-Hispanic Other | Hispanic |
| 2021                          | 2.6   | 1.9                | 4.7                | 0.6                | 1.1      |
| 2022                          | 2.4   | 2.1                | 3.8                | 1.1                | 0.3      |
| <b>Percent Change</b>         | -7.7% | 10.5%              | -19.1%             | 83.3%              | -72.7%   |

<sup>1</sup>Rates per 1,000 live births

**Table 6.**

Neonatal Mortality and Neonatal Mortality Rates<sup>1</sup>  
 South Carolina and Each County, 2022, 2020-2022 2017-2019 (Residence Data)

| County of Residence   | 2022   |      | 2020-2022 |      | 2017-2019 |      |
|-----------------------|--------|------|-----------|------|-----------|------|
|                       | Number | Rate | Number    | Rate | Number    | Rate |
| <b>South Carolina</b> | 256    | 4.4  | 772       | 4.5  | 767       | 4.5  |
| Abbeville             | 0      | 0.0  | 8         | 11.8 | <5        | -    |
| Aiken                 | 6      | 3.0  | 19        | 3.3  | 30        | 5.4  |
| Allendale             | 0      | 0.0  | <5        | -    | 0         | 0.0  |
| Anderson              | 10     | 4.1  | 33        | 4.8  | 29        | 4.3  |
| Bamberg               | 0      | 0.0  | <5        | -    | 6         | 14.5 |
| Barnwell              | <5     | -    | <5        | -    | <5        | -    |
| Beaufort              | 8      | 4.3  | 24        | 4.3  | 14        | 2.4  |
| Berkeley              | 13     | 4.3  | 34        | 3.9  | 27        | 3.2  |
| Calhoun               | 0      | 0.0  | 0         | 0.0  | <5        | -    |
| Charleston            | 30     | 6.0  | 79        | 5.3  | 55        | 3.8  |
| Cherokee              | <5     | -    | 9         | 4.7  | 14        | 7.1  |
| Chester               | <5     | -    | 5         | 5.1  | 7         | 6.2  |
| Chesterfield          | 5      | 10.0 | 11        | 7.5  | 8         | 5.4  |
| Clarendon             | <5     | -    | 8         | 9.0  | <5        | -    |
| Colleton              | <5     | -    | 7         | 5.4  | 11        | 8.0  |
| Darlington            | <5     | -    | 11        | 4.9  | 12        | 5.2  |
| Dillon                | 0      | 0.0  | <5        | -    | 9         | 7.1  |
| Dorchester            | 6      | 2.9  | 21        | 3.6  | 22        | 4.0  |
| Edgefield             | 0      | 0.0  | <5        | -    | <5        | -    |
| Fairfield             | <5     | -    | 6         | 10.6 | <5        | -    |
| Florence              | 14     | 8.8  | 37        | 7.7  | 45        | 9.1  |
| Georgetown            | 0      | 0.0  | <5        | -    | 7         | 4.4  |
| Greenville            | 19     | 2.9  | 63        | 3.2  | 83        | 4.4  |
| Greenwood             | <5     | -    | 10        | 4.4  | 14        | 5.6  |
| Hampton               | <5     | -    | 6         | 10.1 | <5        | -    |
| Horry                 | 15     | 4.5  | 44        | 4.5  | 41        | 4.3  |
| Jasper                | <5     | -    | 5         | 4.4  | 6         | 5.5  |
| Kershaw               | <5     | -    | 6         | 2.7  | 8         | 3.6  |
| Lancaster             | <5     | -    | 5         | 1.5  | 13        | 4.3  |
| Laurens               | <5     | -    | 9         | 4.1  | 8         | 3.4  |
| Lee                   | <5     | -    | 5         | 10.3 | 5         | 9.4  |
| Lexington             | 14     | 4.2  | 42        | 4.3  | 33        | 3.4  |
| McCormick             | 0      | 0.0  | <5        | -    | <5        | -    |
| Marion                | <5     | -    | 8         | 8.3  | 10        | 9.9  |
| Marlboro              | <5     | -    | <5        | -    | <5        | -    |
| Newberry              | <5     | -    | 10        | 8.1  | 6         | 4.9  |
| Oconee                | <5     | -    | 10        | 5.0  | 8         | 3.8  |
| Orangeburg            | <5     | -    | 25        | 9.9  | 22        | 7.5  |
| Pickens               | 9      | 7.0  | 18        | 5.0  | 12        | 3.3  |
| Richland              | 19     | 4.3  | 63        | 4.6  | 72        | 5.1  |
| Saluda                | <5     | -    | 5         | 7.0  | <5        | -    |
| Spartanburg           | 15     | 3.6  | 46        | 3.9  | 37        | 3.2  |
| Sumter                | 10     | 7.5  | 25        | 6.1  | 18        | 4.3  |
| Union                 | <5     | -    | 6         | 7.8  | <5        | -    |
| Williamsburg          | 0      | 0.0  | 0         | 0.0  | 9         | 9.8  |
| York                  | 10     | 3.4  | 33        | 3.7  | 30        | 3.4  |

<sup>1</sup>Rates per 1,000 live births. Rates calculated with 20 or fewer deaths are unreliable and should be used cautiously.

**Table 6-A.**

Non-Hispanic White<sup>1</sup> Neonatal Mortality and Neonatal Mortality Rates<sup>2</sup>  
 South Carolina and Each County, 2022, 2020-2022, 2017-2019  
 (Residence Data)

| County of Residence   | 2022   |      | 2020-2022 |      | 2017-2019 |      |
|-----------------------|--------|------|-----------|------|-----------|------|
|                       | Number | Rate | Number    | Rate | Number    | Rate |
| <b>South Carolina</b> | 102    | 3.1  | 310       | 3.2  | 307       | 3.1  |
| Abbeville             | 0      | 0.0  | <5        | -    | <5        | -    |
| Aiken                 | <5     | -    | 5         | 1.5  | 13        | 3.8  |
| Allendale             | 0      | 0.0  | 0         | 0.0  | 0         | 0.0  |
| Anderson              | <5     | -    | 15        | 3.0  | 20        | 4.0  |
| Bamberg               | 0      | 0.0  | 0         | 0.0  | 0         | 0.0  |
| Barnwell              | <5     | -    | <5        | -    | <5        | -    |
| Beaufort              | 0      | 0.0  | 6         | 2.0  | 6         | 2.0  |
| Berkeley              | 7      | 4.2  | 13        | 2.7  | 9         | 1.8  |
| Calhoun               | 0      | 0.0  | 0         | 0.0  | <5        | -    |
| Charleston            | 13     | 4.2  | 37        | 4.1  | 17        | 2.0  |
| Cherokee              | <5     | -    | 7         | 5.4  | 7         | 5.3  |
| Chester               | 0      | 0.0  | <5        | -    | <5        | -    |
| Chesterfield          | <5     | -    | 6         | 7.1  | <5        | -    |
| Clarendon             | <5     | -    | <5        | -    | 0         | 0.0  |
| Colleton              | <5     | -    | <5        | -    | <5        | -    |
| Darlington            | 0      | 0.0  | 5         | 4.6  | 6         | 5.6  |
| Dillon                | 0      | 0.0  | 0         | 0.0  | <5        | -    |
| Dorchester            | <5     | -    | 7         | 2.1  | 10        | 3.0  |
| Edgefield             | 0      | 0.0  | <5        | -    | 0         | 0.0  |
| Fairfield             | <5     | -    | <5        | -    | 0         | 0.0  |
| Florence              | <5     | -    | 7         | 3.3  | 17        | 8.2  |
| Georgetown            | 0      | 0.0  | <5        | -    | <5        | -    |
| Greenville            | 7      | 1.8  | 28        | 2.4  | 36        | 3.1  |
| Greenwood             | 0      | 0.0  | <5        | -    | <5        | -    |
| Hampton               | 0      | 0.0  | <5        | -    | <5        | -    |
| Horry                 | 7      | 3.4  | 22        | 3.6  | 16        | 2.6  |
| Jasper                | 0      | 0.0  | 0         | 0.0  | <5        | -    |
| Kershaw               | <5     | -    | <5        | -    | 5         | 3.4  |
| Lancaster             | <5     | -    | <5        | -    | 8         | 4.0  |
| Laurens               | <5     | -    | <5        | -    | <5        | -    |
| Lee                   | <5     | -    | <5        | -    | 0         | 0.0  |
| Lexington             | 7      | 3.4  | 25        | 4.0  | 17        | 2.6  |
| McCormick             | 0      | 0.0  | 0         | 0.0  | 0         | 0.0  |
| Marion                | 0      | 0.0  | <5        | -    | <5        | -    |
| Marlboro              | 0      | 0.0  | <5        | -    | <5        | -    |
| Newberry              | 0      | 0.0  | <5        | -    | <5        | -    |
| Oconee                | <5     | -    | 7         | 4.3  | 8         | 4.7  |
| Orangeburg            | <5     | -    | <5        | -    | <5        | -    |
| Pickens               | 8      | 7.7  | 16        | 5.3  | 12        | 4.0  |
| Richland              | <5     | -    | 10        | 2.2  | 13        | 2.7  |
| Saluda                | <5     | -    | <5        | -    | <5        | -    |
| Spartanburg           | 9      | 3.3  | 26        | 3.4  | 25        | 3.3  |
| Sumter                | <5     | -    | 13        | 7.9  | 9         | 5.0  |
| Union                 | 0      | 0.0  | <5        | -    | <5        | -    |
| Williamsburg          | 0      | 0.0  | 0         | 0.0  | <5        | -    |
| York                  | <5     | -    | 12        | 2.1  | 14        | 2.4  |

<sup>1</sup>Race/Ethnicity of mother

<sup>2</sup>Rates per 1,000 live births. Rates calculated with 20 or fewer deaths are unreliable and should be used cautiously.

**Table 6-B.**

Non-Hispanic Black<sup>1</sup> Neonatal Mortality and Neonatal Mortality Rates<sup>2</sup>  
 South Carolina and Each County, 2022, 2020-2022, 2017-2019  
 (Residence Data)

| County of Residence   | 2022   |      | 2020-2022 |      | 2017-2019 |      |
|-----------------------|--------|------|-----------|------|-----------|------|
|                       | Number | Rate | Number    | Rate | Number    | Rate |
| <b>South Carolina</b> | 121    | 7.4  | 377       | 7.5  | 381       | 7.3  |
| Abbeville             | 0      | 0.0  | 6         | 32.1 | <5        | -    |
| Aiken                 | <5     | -    | 13        | 7.6  | 14        | 8.6  |
| Allendale             | 0      | 0.0  | <5        | -    | 0         | 0.0  |
| Anderson              | <5     | -    | 15        | 11.8 | 8         | 6.3  |
| Bamberg               | 0      | 0.0  | <5        | -    | 6         | 25.2 |
| Barnwell              | 0      | 0.0  | <5        | -    | <5        | -    |
| Beaufort              | <5     | -    | 11        | 9.2  | 7         | 5.4  |
| Berkeley              | 5      | 6.3  | 15        | 6.8  | 13        | 6.4  |
| Calhoun               | 0      | 0.0  | 0         | 0.0  | <5        | -    |
| Charleston            | 14     | 12.5 | 35        | 9.6  | 32        | 7.8  |
| Cherokee              | 0      | 0.0  | <5        | -    | 7         | 13.9 |
| Chester               | <5     | -    | <5        | -    | 5         | 10.1 |
| Chesterfield          | <5     | -    | 5         | 9.5  | 5         | 9.1  |
| Clarendon             | <5     | -    | 5         | 11.3 | <5        | -    |
| Colleton              | <5     | -    | <5        | -    | 7         | 12.3 |
| Darlington            | <5     | -    | 6         | 5.7  | 6         | 5.3  |
| Dillon                | 0      | 0.0  | <5        | -    | <5        | -    |
| Dorchester            | <5     | -    | 10        | 5.9  | 10        | 6.5  |
| Edgefield             | 0      | 0.0  | 0         | 0.0  | <5        | -    |
| Fairfield             | <5     | -    | <5        | -    | <5        | -    |
| Florence              | 10     | 12.3 | 27        | 11.4 | 26        | 10.2 |
| Georgetown            | 0      | 0.0  | 0         | 0.0  | <5        | -    |
| Greenville            | 5      | 4.1  | 19        | 5.0  | 31        | 8.1  |
| Greenwood             | <5     | -    | 7         | 8.4  | 9         | 9.4  |
| Hampton               | <5     | -    | <5        | -    | <5        | -    |
| Horry                 | 7      | 11.1 | 19        | 10.7 | 17        | 9.5  |
| Jasper                | <5     | -    | <5        | -    | <5        | -    |
| Kershaw               | 0      | 0.0  | <5        | -    | <5        | -    |
| Lancaster             | 0      | 0.0  | <5        | -    | <5        | -    |
| Laurens               | 0      | 0.0  | <5        | -    | <5        | -    |
| Lee                   | <5     | -    | <5        | -    | <5        | -    |
| Lexington             | 7      | 10.2 | 14        | 7.0  | 12        | 6.7  |
| McCormick             | 0      | 0.0  | <5        | -    | <5        | -    |
| Marion                | <5     | -    | 7         | 11.1 | 7         | 10.7 |
| Marlboro              | <5     | -    | <5        | -    | <5        | -    |
| Newberry              | <5     | -    | 8         | 17.7 | 5         | 11.1 |
| Oconee                | <5     | -    | <5        | -    | 0         | 0.0  |
| Orangeburg            | <5     | -    | 21        | 12.9 | 20        | 10.5 |
| Pickens               | <5     | -    | <5        | -    | 0         | 0.0  |
| Richland              | 14     | 5.8  | 49        | 6.5  | 48        | 6.2  |
| Saluda                | <5     | -    | <5        | -    | <5        | -    |
| Spartanburg           | <5     | -    | 12        | 4.7  | 10        | 3.9  |
| Sumter                | 6      | 8.8  | 12        | 5.7  | 8         | 3.9  |
| Union                 | <5     | -    | 5         | 19.2 | 0         | 0.0  |
| Williamsburg          | 0      | 0.0  | 0         | 0.0  | 7         | 11.3 |
| York                  | <5     | -    | 14        | 7.0  | 14        | 6.7  |

<sup>1</sup>Race/Ethnicity of mother

<sup>2</sup>Rates per 1,000 live births. Rates calculated with 20 or fewer deaths are unreliable and should be used cautiously.

**Table 6-C.**

Non-Hispanic Other<sup>1</sup> Neonatal Mortality and Neonatal Mortality Rates<sup>2</sup>  
 South Carolina and Each County, 2022, 2020-2022, 2017-2019  
 (Residence Data)

| County of Residence   | 2022   |      | 2020-2022 |      | 2017-2019 |      |
|-----------------------|--------|------|-----------|------|-----------|------|
|                       | Number | Rate | Number    | Rate | Number    | Rate |
| <b>South Carolina</b> | 7      | 3.9  | 17        | 3.3  | 17        | 3.4  |
| Abbeville             | 0      | 0.0  | 0         | 0.0  | 0         | 0.0  |
| Aiken                 | <5     | -    | <5        | -    | <5        | -    |
| Allendale             | 0      | 0.0  | 0         | 0.0  | 0         | 0.0  |
| Anderson              | 0      | 0.0  | 0         | 0.0  | 0         | 0.0  |
| Bamberg               | 0      | 0.0  | 0         | 0.0  | 0         | 0.0  |
| Barnwell              | 0      | 0.0  | 0         | 0.0  | 0         | 0.0  |
| Beaufort              | <5     | -    | <5        | -    | 0         | 0.0  |
| Berkeley              | 0      | 0.0  | <5        | -    | <5        | -    |
| Calhoun               | 0      | 0.0  | 0         | 0.0  | 0         | 0.0  |
| Charleston            | 0      | 0.0  | 0         | 0.0  | <5        | -    |
| Cherokee              | 0      | 0.0  | 0         | 0.0  | 0         | 0.0  |
| Chester               | 0      | 0.0  | 0         | 0.0  | 0         | 0.0  |
| Chesterfield          | 0      | 0.0  | 0         | 0.0  | <5        | -    |
| Clarendon             | 0      | 0.0  | 0         | 0.0  | 0         | 0.0  |
| Colleton              | 0      | 0.0  | 0         | 0.0  | 0         | 0.0  |
| Darlington            | 0      | 0.0  | 0         | 0.0  | 0         | 0.0  |
| Dillon                | 0      | 0.0  | <5        | -    | <5        | -    |
| Dorchester            | 0      | 0.0  | <5        | -    | 0         | 0.0  |
| Edgefield             | 0      | 0.0  | 0         | 0.0  | 0         | 0.0  |
| Fairfield             | 0      | 0.0  | 0         | 0.0  | 0         | 0.0  |
| Florence              | 0      | 0.0  | 0         | 0.0  | <5        | -    |
| Georgetown            | 0      | 0.0  | 0         | 0.0  | 0         | 0.0  |
| Greenville            | <5     | -    | <5        | -    | <5        | -    |
| Greenwood             | 0      | 0.0  | 0         | 0.0  | 0         | 0.0  |
| Hampton               | 0      | 0.0  | 0         | 0.0  | 0         | 0.0  |
| Horry                 | <5     | -    | <5        | -    | <5        | -    |
| Jasper                | 0      | 0.0  | 0         | 0.0  | 0         | 0.0  |
| Kershaw               | 0      | 0.0  | 0         | 0.0  | 0         | 0.0  |
| Lancaster             | 0      | 0.0  | 0         | 0.0  | 0         | 0.0  |
| Laurens               | 0      | 0.0  | 0         | 0.0  | 0         | 0.0  |
| Lee                   | 0      | 0.0  | 0         | 0.0  | 0         | 0.0  |
| Lexington             | 0      | 0.0  | <5        | -    | 0         | 0.0  |
| McCormick             | 0      | 0.0  | 0         | 0.0  | 0         | 0.0  |
| Marion                | 0      | 0.0  | 0         | 0.0  | 0         | 0.0  |
| Marlboro              | 0      | 0.0  | 0         | 0.0  | 0         | 0.0  |
| Newberry              | 0      | 0.0  | 0         | 0.0  | 0         | 0.0  |
| Oconee                | 0      | 0.0  | <5        | -    | 0         | 0.0  |
| Orangeburg            | 0      | 0.0  | 0         | 0.0  | 0         | 0.0  |
| Pickens               | 0      | 0.0  | 0         | 0.0  | 0         | 0.0  |
| Richland              | 0      | 0.0  | <5        | -    | <5        | -    |
| Saluda                | 0      | 0.0  | 0         | 0.0  | 0         | 0.0  |
| Spartanburg           | <5     | -    | <5        | -    | <5        | -    |
| Sumter                | 0      | 0.0  | 0         | 0.0  | 0         | 0.0  |
| Union                 | 0      | 0.0  | 0         | 0.0  | 0         | 0.0  |
| Williamsburg          | 0      | 0.0  | 0         | 0.0  | <5        | -    |
| York                  | <5     | -    | <5        | -    | <5        | -    |

<sup>1</sup>Race/Ethnicity of mother

<sup>2</sup>Rates per 1,000 live births. Rates calculated with 20 or fewer deaths are unreliable and should be used cautiously.

**Table 6-D.**

Hispanic<sup>1</sup> Neonatal Mortality and Neonatal Mortality Rates<sup>2</sup>  
 South Carolina and Each County, 2022, 2020-2022, 2017-2019  
 (Residence Data)

| County of Residence   | 2022   |      | 2020-2022 |      | 2017-2019 |      |
|-----------------------|--------|------|-----------|------|-----------|------|
|                       | Number | Rate | Number    | Rate | Number    | Rate |
| <b>South Carolina</b> | 26     | 3.8  | 68        | 3.6  | 62        | 3.9  |
| Abbeville             | 0      | 0.0  | 0         | 0.0  | 0         | 0.0  |
| Aiken                 | 0      | 0.0  | 0         | 0.0  | <5        | -    |
| Allendale             | 0      | 0.0  | 0         | 0.0  | 0         | 0.0  |
| Anderson              | <5     | -    | <5        | -    | <5        | -    |
| Bamberg               | 0      | 0.0  | 0         | 0.0  | 0         | 0.0  |
| Barnwell              | 0      | 0.0  | 0         | 0.0  | 0         | 0.0  |
| Beaufort              | 5      | 12.0 | 6         | 4.9  | <5        | -    |
| Berkeley              | <5     | -    | <5        | -    | <5        | -    |
| Calhoun               | 0      | 0.0  | 0         | 0.0  | 0         | 0.0  |
| Charleston            | <5     | -    | 7         | 3.6  | <5        | -    |
| Cherokee              | <5     | -    | <5        | -    | 0         | 0.0  |
| Chester               | 0      | 0.0  | 0         | 0.0  | 0         | 0.0  |
| Chesterfield          | 0      | 0.0  | 0         | 0.0  | 0         | 0.0  |
| Clarendon             | 0      | 0.0  | 0         | 0.0  | <5        | -    |
| Colleton              | 0      | 0.0  | <5        | -    | 0         | 0.0  |
| Darlington            | 0      | 0.0  | 0         | 0.0  | 0         | 0.0  |
| Dillon                | 0      | 0.0  | 0         | 0.0  | 0         | 0.0  |
| Dorchester            | <5     | -    | <5        | -    | <5        | -    |
| Edgefield             | 0      | 0.0  | 0         | 0.0  | 0         | 0.0  |
| Fairfield             | 0      | 0.0  | 0         | 0.0  | 0         | 0.0  |
| Florence              | 0      | 0.0  | <5        | -    | <5        | -    |
| Georgetown            | 0      | 0.0  | 0         | 0.0  | <5        | -    |
| Greenville            | 6      | 4.9  | 15        | 4.5  | 14        | 4.9  |
| Greenwood             | 0      | 0.0  | 0         | 0.0  | <5        | -    |
| Hampton               | 0      | 0.0  | 0         | 0.0  | 0         | 0.0  |
| Horry                 | 0      | 0.0  | <5        | -    | 7         | 5.8  |
| Jasper                | 0      | 0.0  | <5        | -    | <5        | -    |
| Kershaw               | 0      | 0.0  | <5        | -    | 0         | 0.0  |
| Lancaster             | 0      | 0.0  | 0         | 0.0  | <5        | -    |
| Laurens               | 0      | 0.0  | <5        | -    | 0         | 0.0  |
| Lee                   | 0      | 0.0  | 0         | 0.0  | <5        | -    |
| Lexington             | 0      | 0.0  | <5        | -    | <5        | -    |
| McCormick             | 0      | 0.0  | 0         | 0.0  | 0         | 0.0  |
| Marion                | 0      | 0.0  | 0         | 0.0  | 0         | 0.0  |
| Marlboro              | 0      | 0.0  | 0         | 0.0  | 0         | 0.0  |
| Newberry              | 0      | 0.0  | <5        | -    | 0         | 0.0  |
| Oconee                | 0      | 0.0  | 0         | 0.0  | 0         | 0.0  |
| Orangeburg            | <5     | -    | <5        | -    | <5        | -    |
| Pickens               | 0      | 0.0  | 0         | 0.0  | 0         | 0.0  |
| Richland              | <5     | -    | <5        | -    | 8         | 7.7  |
| Saluda                | 0      | 0.0  | <5        | -    | <5        | -    |
| Spartanburg           | <5     | -    | 6         | 4.5  | <5        | -    |
| Sumter                | 0      | 0.0  | 0         | 0.0  | <5        | -    |
| Union                 | 0      | 0.0  | 0         | 0.0  | 0         | 0.0  |
| Williamsburg          | 0      | 0.0  | 0         | 0.0  | 0         | 0.0  |
| York                  | <5     | -    | <5        | -    | 0         | 0.0  |

<sup>1</sup>Race/Ethnicity of mother

<sup>2</sup>Rates per 1,000 live births. Rates calculated with 20 or fewer deaths are unreliable and should be used cautiously.



**Table 7.**  
**Postneonatal Mortality and Postneonatal Mortality Rates<sup>1</sup>**  
**South Carolina and Each County, 2022, 2020-2022, 2017-2019**  
**(Residence Data)**

| County of Residence   | 2022   |      | 2020-2022 |      | 2017-2019 |      |
|-----------------------|--------|------|-----------|------|-----------|------|
|                       | Number | Rate | Number    | Rate | Number    | Rate |
| <b>South Carolina</b> | 136    | 2.4  | 400       | 2.3  | 401       | 2.3  |
| Abbeville             | 0      | 0.0  | 0         | 0.0  | <5        | -    |
| Aiken                 | 8      | 4.0  | 18        | 3.1  | 19        | 3.4  |
| Allendale             | 0      | 0.0  | <5        | -    | 0         | 0.0  |
| Anderson              | 6      | 2.5  | 17        | 2.5  | 12        | 1.8  |
| Bamberg               | 0      | 0.0  | 0         | 0.0  | 0         | 0.0  |
| Barnwell              | 0      | 0.0  | <5        | -    | 5         | 6.7  |
| Beaufort              | <5     | -    | 11        | 2.0  | 9         | 1.6  |
| Berkeley              | 8      | 2.6  | 16        | 1.8  | 16        | 1.9  |
| Calhoun               | 0      | 0.0  | <5        | -    | <5        | -    |
| Charleston            | 9      | 1.8  | 21        | 1.4  | 32        | 2.2  |
| Cherokee              | <5     | -    | 5         | 2.6  | <5        | -    |
| Chester               | <5     | -    | 6         | 6.2  | 5         | 4.5  |
| Chesterfield          | <5     | -    | 5         | 3.4  | 6         | 4.0  |
| Clarendon             | 0      | 0.0  | <5        | -    | 5         | 5.3  |
| Colleton              | <5     | -    | <5        | -    | <5        | -    |
| Darlington            | <5     | -    | <5        | -    | 6         | 2.6  |
| Dillon                | 0      | 0.0  | 6         | 5.3  | <5        | -    |
| Dorchester            | <5     | -    | 8         | 1.4  | 12        | 2.2  |
| Edgefield             | 0      | 0.0  | <5        | -    | <5        | -    |
| Fairfield             | 0      | 0.0  | <5        | -    | <5        | -    |
| Florence              | 5      | 3.1  | 17        | 3.5  | 18        | 3.6  |
| Georgetown            | <5     | -    | 6         | 4.1  | 5         | 3.2  |
| Greenville            | 7      | 1.1  | 34        | 1.8  | 36        | 1.9  |
| Greenwood             | <5     | -    | 7         | 3.1  | 7         | 2.8  |
| Hampton               | 0      | 0.0  | <5        | -    | <5        | -    |
| Horry                 | 8      | 2.4  | 18        | 1.9  | 17        | 1.8  |
| Jasper                | <5     | -    | <5        | -    | <5        | -    |
| Kershaw               | <5     | -    | 9         | 4.0  | <5        | -    |
| Lancaster             | <5     | -    | 9         | 2.8  | 8         | 2.7  |
| Laurens               | <5     | -    | 9         | 4.1  | 5         | 2.1  |
| Lee                   | 0      | 0.0  | <5        | -    | <5        | -    |
| Lexington             | 8      | 2.4  | 12        | 1.2  | 31        | 3.2  |
| McCormick             | 0      | 0.0  | 0         | 0.0  | 0         | 0.0  |
| Marion                | 0      | 0.0  | <5        | -    | <5        | -    |
| Marlboro              | <5     | -    | <5        | -    | <5        | -    |
| Newberry              | 5      | 11.8 | 10        | 8.1  | 5         | 4.1  |
| Oconee                | 6      | 8.3  | 8         | 4.0  | 12        | 5.7  |
| Orangeburg            | 5      | 5.9  | 9         | 3.6  | 5         | 1.7  |
| Pickens               | <5     | -    | 8         | 2.2  | 6         | 1.7  |
| Richland              | 10     | 2.2  | 35        | 2.6  | 31        | 2.2  |
| Saluda                | 0      | 0.0  | 0         | 0.0  | <5        | -    |
| Spartanburg           | 7      | 1.7  | 23        | 1.9  | 26        | 2.2  |
| Sumter                | 6      | 4.5  | 18        | 4.4  | 7         | 1.7  |
| Union                 | <5     | -    | <5        | -    | <5        | -    |
| Williamsburg          | <5     | -    | <5        | -    | <5        | -    |
| York                  | <5     | -    | 14        | 1.6  | 16        | 1.8  |

<sup>1</sup>Rates per 1,000 live births. Rates calculated with 20 or fewer deaths are unreliable and should be used cautiously.

**Table 7-A.**

Non-Hispanic White<sup>1</sup> Postneonatal Mortality and Postneonatal Mortality Rates<sup>2</sup>  
 South Carolina and Each County, 2022, 2020-2022, 2017-2019  
 (Residence Data)

| County of Residence   | 2022   |      | 2020-2022 |      | 2017-2019 |      |
|-----------------------|--------|------|-----------|------|-----------|------|
|                       | Number | Rate | Number    | Rate | Number    | Rate |
| <b>South Carolina</b> | 70     | 2.1  | 170       | 1.8  | 177       | 1.8  |
| Abbeville             | 0      | 0.0  | 0         | 0.0  | 0         | 0.0  |
| Aiken                 | 7      | 5.8  | 10        | 2.9  | 12        | 3.5  |
| Allendale             | 0      | 0.0  | 0         | 0.0  | 0         | 0.0  |
| Anderson              | <5     | -    | 9         | 1.8  | 10        | 2.0  |
| Bamberg               | 0      | 0.0  | 0         | 0.0  | 0         | 0.0  |
| Barnwell              | 0      | 0.0  | 0         | 0.0  | <5        | -    |
| Beaufort              | <5     | -    | 5         | 1.7  | <5        | -    |
| Berkeley              | 5      | 3.0  | 11        | 2.2  | 9         | 1.8  |
| Calhoun               | 0      | 0.0  | 0         | 0.0  | <5        | -    |
| Charleston            | <5     | -    | 5         | 0.6  | 8         | 0.9  |
| Cherokee              | <5     | -    | <5        | -    | <5        | -    |
| Chester               | <5     | -    | <5        | -    | <5        | -    |
| Chesterfield          | <5     | -    | <5        | -    | <5        | -    |
| Clarendon             | 0      | 0.0  | <5        | -    | <5        | -    |
| Colleton              | <5     | -    | <5        | -    | <5        | -    |
| Darlington            | 0      | 0.0  | <5        | -    | <5        | -    |
| Dillon                | 0      | 0.0  | <5        | -    | 0         | 0.0  |
| Dorchester            | <5     | -    | <5        | -    | 6         | 1.8  |
| Edgefield             | 0      | 0.0  | 0         | 0.0  | 0         | 0.0  |
| Fairfield             | 0      | 0.0  | 0         | 0.0  | <5        | -    |
| Florence              | <5     | -    | 6         | 2.8  | <5        | -    |
| Georgetown            | <5     | -    | <5        | -    | <5        | -    |
| Greenville            | <5     | -    | 13        | 1.1  | 14        | 1.2  |
| Greenwood             | <5     | -    | <5        | -    | <5        | -    |
| Hampton               | 0      | 0.0  | 0         | 0.0  | <5        | -    |
| Horry                 | <5     | -    | 9         | 1.5  | 9         | 1.4  |
| Jasper                | <5     | -    | <5        | -    | <5        | -    |
| Kershaw               | <5     | -    | 6         | 4.4  | <5        | -    |
| Lancaster             | <5     | -    | 6         | 2.8  | <5        | -    |
| Laurens               | <5     | -    | <5        | -    | <5        | -    |
| Lee                   | 0      | 0.0  | 0         | 0.0  | <5        | -    |
| Lexington             | <5     | -    | <5        | -    | 19        | 2.9  |
| McCormick             | 0      | 0.0  | 0         | 0.0  | 0         | 0.0  |
| Marion                | 0      | 0.0  | 0         | 0.0  | 0         | 0.0  |
| Marlboro              | 0      | 0.0  | 0         | 0.0  | 0         | 0.0  |
| Newberry              | <5     | -    | <5        | -    | <5        | -    |
| Oconee                | 6      | 10.7 | 8         | 4.9  | 11        | 6.4  |
| Orangeburg            | 0      | 0.0  | <5        | -    | <5        | -    |
| Pickens               | <5     | -    | 6         | 2.0  | 5         | 1.7  |
| Richland              | <5     | -    | 7         | 1.6  | 5         | 1.0  |
| Saluda                | 0      | 0.0  | 0         | 0.0  | <5        | -    |
| Spartanburg           | 6      | 2.2  | 16        | 2.1  | 11        | 1.5  |
| Sumter                | <5     | -    | 5         | 3.0  | <5        | -    |
| Union                 | <5     | -    | <5        | -    | <5        | -    |
| Williamsburg          | <5     | -    | <5        | -    | 0         | 0.0  |
| York                  | <5     | -    | 5         | 0.9  | 10        | 1.7  |

<sup>1</sup>Race/Ethnicity of mother

<sup>2</sup>Rates per 1,000 live births. Rates calculated with 20 or fewer deaths are unreliable and should be used cautiously.

**Table 7-B.**

Non-Hispanic Black<sup>1</sup> Postneonatal Mortality and Postneonatal Mortality Rates<sup>2</sup>  
 South Carolina and Each County, 2022, 2020-2022, 2017-2019  
 (Residence Data)

| County of Residence   | 2022   |      | 2020-2022 |      | 2017-2019 |      |
|-----------------------|--------|------|-----------|------|-----------|------|
|                       | Number | Rate | Number    | Rate | Number    | Rate |
| <b>South Carolina</b> | 62     | 3.8  | 203       | 4.0  | 184       | 3.5  |
| Abbeville             | 0      | 0.0  | 0         | 0.0  | <5        | -    |
| Aiken                 | 0      | 0.0  | 6         | 3.5  | 6         | 3.7  |
| Allendale             | 0      | 0.0  | <5        | -    | 0         | 0.0  |
| Anderson              | <5     | -    | 6         | 4.7  | <5        | -    |
| Bamberg               | 0      | 0.0  | 0         | 0.0  | 0         | 0.0  |
| Barnwell              | 0      | 0.0  | <5        | -    | <5        | -    |
| Beaufort              | 0      | 0.0  | 5         | 4.2  | 5         | 3.9  |
| Berkeley              | <5     | -    | 5         | 2.3  | <5        | -    |
| Calhoun               | 0      | 0.0  | <5        | -    | 0         | 0.0  |
| Charleston            | 6      | 5.3  | 14        | 3.8  | 23        | 5.6  |
| Cherokee              | <5     | -    | <5        | -    | 0         | 0.0  |
| Chester               | 0      | 0.0  | <5        | -    | <5        | -    |
| Chesterfield          | <5     | -    | <5        | -    | <5        | -    |
| Clarendon             | 0      | 0.0  | <5        | -    | <5        | -    |
| Colleton              | <5     | -    | <5        | -    | <5        | -    |
| Darlington            | <5     | -    | <5        | -    | <5        | -    |
| Dillon                | 0      | 0.0  | <5        | -    | <5        | -    |
| Dorchester            | <5     | -    | <5        | -    | 5         | 3.2  |
| Edgefield             | 0      | 0.0  | <5        | -    | <5        | -    |
| Fairfield             | 0      | 0.0  | <5        | -    | <5        | -    |
| Florence              | <5     | -    | 10        | 4.2  | 14        | 5.5  |
| Georgetown            | 0      | 0.0  | <5        | -    | <5        | -    |
| Greenville            | <5     | -    | 17        | 4.5  | 17        | 4.5  |
| Greenwood             | <5     | -    | 6         | 7.2  | <5        | -    |
| Hampton               | 0      | 0.0  | <5        | -    | <5        | -    |
| Horry                 | <5     | -    | 8         | 4.5  | 7         | 3.9  |
| Jasper                | 0      | 0.0  | <5        | -    | <5        | -    |
| Kershaw               | <5     | -    | <5        | -    | 0         | 0.0  |
| Lancaster             | <5     | -    | <5        | -    | 6         | 8.6  |
| Laurens               | <5     | -    | 5         | 8.7  | <5        | -    |
| Lee                   | 0      | 0.0  | <5        | -    | 0         | 0.0  |
| Lexington             | <5     | -    | 6         | 3.0  | 7         | 3.9  |
| McCormick             | 0      | 0.0  | 0         | 0.0  | 0         | 0.0  |
| Marion                | 0      | 0.0  | <5        | -    | <5        | -    |
| Marlboro              | <5     | -    | <5        | -    | <5        | -    |
| Newberry              | <5     | -    | 6         | 13.3 | <5        | -    |
| Oconee                | 0      | 0.0  | 0         | 0.0  | <5        | -    |
| Orangeburg            | 5      | 9.1  | 8         | 4.9  | <5        | -    |
| Pickens               | <5     | -    | <5        | -    | 0         | 0.0  |
| Richland              | 7      | 2.9  | 26        | 3.4  | 20        | 2.6  |
| Saluda                | 0      | 0.0  | 0         | 0.0  | 0         | 0.0  |
| Spartanburg           | <5     | -    | 6         | 2.4  | 11        | 4.3  |
| Sumter                | <5     | -    | 13        | 6.2  | 5         | 2.5  |
| Union                 | 0      | 0.0  | <5        | -    | 0         | 0.0  |
| Williamsburg          | 0      | 0.0  | <5        | -    | <5        | -    |
| York                  | 0      | 0.0  | 6         | 3.0  | 5         | 2.4  |

<sup>1</sup>Race/Ethnicity of mother

<sup>2</sup>Rates per 1,000 live births. Rates calculated with 20 or fewer deaths are unreliable and should be used cautiously.

**Table 7-C.**

**Non-Hispanic Other<sup>1</sup> Postneonatal Mortality and Postneonatal Mortality Rates<sup>2</sup>  
 South Carolina and Each County, 2022, 2020-2022, 2017-2019  
 (Residence Data)**

| County of Residence   | 2022   |      | 2020-2022 |      | 2017-2019 |      |
|-----------------------|--------|------|-----------|------|-----------|------|
|                       | Number | Rate | Number    | Rate | Number    | Rate |
| <b>South Carolina</b> | <5     | -    | 6         | 1.2  | 14        | 2.8  |
| Abbeville             | 0      | 0.0  | 0         | 0.0  | 0         | 0.0  |
| Aiken                 | 0      | 0.0  | <5        | -    | <5        | -    |
| Allendale             | 0      | 0.0  | 0         | 0.0  | 0         | 0.0  |
| Anderson              | 0      | 0.0  | 0         | 0.0  | 0         | 0.0  |
| Bamberg               | 0      | 0.0  | 0         | 0.0  | 0         | 0.0  |
| Barnwell              | 0      | 0.0  | 0         | 0.0  | 0         | 0.0  |
| Beaufort              | 0      | 0.0  | 0         | 0.0  | 0         | 0.0  |
| Berkeley              | 0      | 0.0  | 0         | 0.0  | <5        | -    |
| Calhoun               | 0      | 0.0  | 0         | 0.0  | 0         | 0.0  |
| Charleston            | 0      | 0.0  | 0         | 0.0  | <5        | -    |
| Cherokee              | 0      | 0.0  | 0         | 0.0  | 0         | 0.0  |
| Chester               | 0      | 0.0  | 0         | 0.0  | 0         | 0.0  |
| Chesterfield          | 0      | 0.0  | 0         | 0.0  | 0         | 0.0  |
| Clarendon             | 0      | 0.0  | 0         | 0.0  | 0         | 0.0  |
| Colleton              | 0      | 0.0  | 0         | 0.0  | <5        | -    |
| Darlington            | 0      | 0.0  | 0         | 0.0  | <5        | -    |
| Dillon                | 0      | 0.0  | <5        | -    | 0         | 0.0  |
| Dorchester            | 0      | 0.0  | 0         | 0.0  | <5        | -    |
| Edgefield             | 0      | 0.0  | 0         | 0.0  | 0         | 0.0  |
| Fairfield             | 0      | 0.0  | 0         | 0.0  | 0         | 0.0  |
| Florence              | 0      | 0.0  | 0         | 0.0  | 0         | 0.0  |
| Georgetown            | 0      | 0.0  | 0         | 0.0  | 0         | 0.0  |
| Greenville            | 0      | 0.0  | 0         | 0.0  | <5        | -    |
| Greenwood             | 0      | 0.0  | 0         | 0.0  | 0         | 0.0  |
| Hampton               | 0      | 0.0  | 0         | 0.0  | 0         | 0.0  |
| Horry                 | <5     | -    | <5        | -    | 0         | 0.0  |
| Jasper                | 0      | 0.0  | 0         | 0.0  | 0         | 0.0  |
| Kershaw               | 0      | 0.0  | 0         | 0.0  | 0         | 0.0  |
| Lancaster             | 0      | 0.0  | 0         | 0.0  | 0         | 0.0  |
| Laurens               | 0      | 0.0  | 0         | 0.0  | 0         | 0.0  |
| Lee                   | 0      | 0.0  | 0         | 0.0  | 0         | 0.0  |
| Lexington             | <5     | -    | <5        | -    | <5        | -    |
| McCormick             | 0      | 0.0  | 0         | 0.0  | 0         | 0.0  |
| Marion                | 0      | 0.0  | 0         | 0.0  | 0         | 0.0  |
| Marlboro              | 0      | 0.0  | 0         | 0.0  | <5        | -    |
| Newberry              | 0      | 0.0  | 0         | 0.0  | 0         | 0.0  |
| Oconee                | 0      | 0.0  | 0         | 0.0  | 0         | 0.0  |
| Orangeburg            | 0      | 0.0  | 0         | 0.0  | 0         | 0.0  |
| Pickens               | 0      | 0.0  | 0         | 0.0  | 0         | 0.0  |
| Richland              | 0      | 0.0  | <5        | -    | <5        | -    |
| Saluda                | 0      | 0.0  | 0         | 0.0  | 0         | 0.0  |
| Spartanburg           | 0      | 0.0  | 0         | 0.0  | <5        | -    |
| Sumter                | 0      | 0.0  | 0         | 0.0  | 0         | 0.0  |
| Union                 | 0      | 0.0  | 0         | 0.0  | 0         | 0.0  |
| Williamsburg          | 0      | 0.0  | 0         | 0.0  | 0         | 0.0  |
| York                  | 0      | 0.0  | <5        | -    | <5        | -    |

<sup>1</sup>Race/Ethnicity of mother

<sup>2</sup>Rates per 1,000 live births. Rates calculated with 20 or fewer deaths are unreliable and should be used cautiously.

**Table 7-D.**

Hispanic<sup>1</sup> Postneonatal Mortality and Postneonatal Mortality Rates<sup>2</sup>  
 South Carolina and Each County, 2022, 2020-2022, 2017-2019  
 (Residence Data)

| County of Residence   | 2022   |      | 2020-2022 |      | 2017-2019 |      |
|-----------------------|--------|------|-----------|------|-----------|------|
|                       | Number | Rate | Number    | Rate | Number    | Rate |
| <b>South Carolina</b> | <5     | -    | 21        | 1.1  | 26        | 1.6  |
| Abbeville             | 0      | 0.0  | 0         | 0.0  | 0         | 0.0  |
| Aiken                 | <5     | -    | <5        | -    | 0         | 0.0  |
| Allendale             | 0      | 0.0  | 0         | 0.0  | 0         | 0.0  |
| Anderson              | 0      | 0.0  | <5        | -    | 0         | 0.0  |
| Bamberg               | 0      | 0.0  | 0         | 0.0  | 0         | 0.0  |
| Barnwell              | 0      | 0.0  | 0         | 0.0  | 0         | 0.0  |
| Beaufort              | 0      | 0.0  | <5        | -    | 0         | 0.0  |
| Berkeley              | 0      | 0.0  | 0         | 0.0  | <5        | -    |
| Calhoun               | 0      | 0.0  | 0         | 0.0  | 0         | 0.0  |
| Charleston            | 0      | 0.0  | <5        | -    | 0         | 0.0  |
| Cherokee              | 0      | 0.0  | 0         | 0.0  | 0         | 0.0  |
| Chester               | 0      | 0.0  | 0         | 0.0  | 0         | 0.0  |
| Chesterfield          | 0      | 0.0  | 0         | 0.0  | 0         | 0.0  |
| Clarendon             | 0      | 0.0  | 0         | 0.0  | <5        | -    |
| Colleton              | 0      | 0.0  | 0         | 0.0  | 0         | 0.0  |
| Darlington            | 0      | 0.0  | 0         | 0.0  | 0         | 0.0  |
| Dillon                | 0      | 0.0  | 0         | 0.0  | 0         | 0.0  |
| Dorchester            | 0      | 0.0  | 0         | 0.0  | 0         | 0.0  |
| Edgefield             | 0      | 0.0  | 0         | 0.0  | 0         | 0.0  |
| Fairfield             | 0      | 0.0  | 0         | 0.0  | 0         | 0.0  |
| Florence              | 0      | 0.0  | <5        | -    | 0         | 0.0  |
| Georgetown            | 0      | 0.0  | <5        | -    | <5        | -    |
| Greenville            | 0      | 0.0  | <5        | -    | <5        | -    |
| Greenwood             | 0      | 0.0  | 0         | 0.0  | <5        | -    |
| Hampton               | 0      | 0.0  | 0         | 0.0  | 0         | 0.0  |
| Horry                 | 0      | 0.0  | 0         | 0.0  | <5        | -    |
| Jasper                | 0      | 0.0  | 0         | 0.0  | <5        | -    |
| Kershaw               | 0      | 0.0  | 0         | 0.0  | 0         | 0.0  |
| Lancaster             | 0      | 0.0  | <5        | -    | 0         | 0.0  |
| Laurens               | <5     | -    | <5        | -    | 0         | 0.0  |
| Lee                   | 0      | 0.0  | 0         | 0.0  | 0         | 0.0  |
| Lexington             | 0      | 0.0  | <5        | -    | <5        | -    |
| McCormick             | 0      | 0.0  | 0         | 0.0  | 0         | 0.0  |
| Marion                | 0      | 0.0  | 0         | 0.0  | 0         | 0.0  |
| Marlboro              | 0      | 0.0  | 0         | 0.0  | 0         | 0.0  |
| Newberry              | 0      | 0.0  | <5        | -    | 0         | 0.0  |
| Oconee                | 0      | 0.0  | 0         | 0.0  | 0         | 0.0  |
| Orangeburg            | 0      | 0.0  | 0         | 0.0  | 0         | 0.0  |
| Pickens               | 0      | 0.0  | 0         | 0.0  | <5        | -    |
| Richland              | 0      | 0.0  | <5        | -    | <5        | -    |
| Saluda                | 0      | 0.0  | 0         | 0.0  | <5        | -    |
| Spartanburg           | 0      | 0.0  | <5        | -    | <5        | -    |
| Sumter                | 0      | 0.0  | 0         | 0.0  | 0         | 0.0  |
| Union                 | 0      | 0.0  | 0         | 0.0  | 0         | 0.0  |
| Williamsburg          | 0      | 0.0  | 0         | 0.0  | 0         | 0.0  |
| York                  | 0      | 0.0  | <5        | -    | 0         | 0.0  |

<sup>1</sup>Race/Ethnicity of mother

<sup>2</sup>Rates per 1,000 live births. Rates calculated with 20 or fewer deaths are unreliable and should be used cautiously.

**Table 8.**  
**Leading Causes of Infant Death by Age at Death**  
**South Carolina, 2022**  
**(Residence Data)**

| Cause of Infant Death (ICD-10 Codes)              | Total | Under<br>1 Day | 1-6<br>Days | 7-27<br>Days | Neonatal<br>(<28 days) | Post-Neonatal<br>(28-364 days) |
|---|-------|----------------|-------------|--------------|------------------------|--------------------------------|
| <b>TOTAL INFANT DEATHS</b>                        | 392   | 130            | 59          | 67           | 256                    | 136                            |
| CONGENITAL MALFORMATIONS, ETC. (Q00-Q99)          | 71    | 21             | 19          | 16           | 56                     | 15                             |
| DISORDERS RELATED TO SHORT GESTATION, ETC. (P07)  | 64    | 57             | 5           | 1            | 63                     | 1                              |
| ACCIDENTS (V01-X59,Y85-Y86)                       | 36    | -              | 2           | 4            | 6                      | 30                             |
| SUDDEN INFANT DEATH SYNDROME (R95)                | 35    | -              | 1           | -            | 1                      | 34                             |
| NEWBORN AFF BY MATERNAL COMP OF PREG (P01)        | 20    | 16             | 2           | 2            | 20                     | -                              |
| BACTERIAL SEPSIS OF NEWBORN (P36)                 | 13    | 2              | 2           | 9            | 13                     | -                              |
| INTRAUTERINE HYPOXIA AND BIRTH ASPHYXIA (P20-P21) | 11    | 2              | 5           | 4            | 11                     | -                              |
| NEWBORN AFF BY COMP OF PLACENTA, ETC. (P02)       | 10    | 8              | 1           | 1            | 10                     | -                              |
| RESPIRATORY DISTRESS OF NEWBORN (P22)             | 8     | 2              | 5           | 1            | 8                      | -                              |
| ATELECTASIS (P28.0-P28.1)                         | 8     | 3              | 2           | 2            | 7                      | 1                              |
| NECROTIZING ENTERCOLITIS OF NEWBORN (P77)         | 7     | -              | 1           | 5            | 6                      | 1                              |
| ALL OTHER CAUSES                                  | 109   | 19             | 14          | 22           | 55                     | 54                             |

**Table 8-A.**  
 Percent Change of Leading Causes of Infant Death  
 from 2021 to 2022, South Carolina

| Cause of Infant Death Ranked by 2022 Data (ICD-10 Codes) | 2021             |                   | 2022             |                   | Change in percent distribution of deaths |
|--|------------------|-------------------|------------------|-------------------|--|
|  | Number of deaths | Percent of deaths | Number of deaths | Percent of deaths |  |
| <b>TOTAL INFANT DEATHS</b>                               | 416              | 100.0             | 392              | 100.0             |  |
| CONGENITAL MALFORMATIONS, ETC. (Q00-Q99)                 | 77               | 18.5              | 71               | 18.1              | -2.2                                     |
| DISORDERS RELATED TO SHORT GESTATION, ETC. (P07)         | 49               | 11.8              | 64               | 16.3              | 38.1                                     |
| ACCIDENTS (V01-X59,Y85-Y86)                              | 26               | 6.3               | 36               | 9.2               | 46.0                                     |
| SUDDEN INFANT DEATH SYNDROME (R95)                       | 27               | 6.5               | 35               | 8.9               | 37.6                                     |
| NEWBORN AFF BY MATERNAL COMP OF PREG (P01)               | 35               | 8.4               | 20               | 5.1               | -39.3                                    |
| BACTERIAL SEPSIS OF NEWBORN (P36)                        | 21               | 5.0               | 13               | 3.3               | -34.0                                    |
| INTRAUTERINE HYPOXIA AND BIRTH ASPHYXIA (P20-P21)        | 13               | 3.1               | 11               | 2.8               | -9.7                                     |
| NEWBORN AFF BY COMP OF PLACENTA, ETC. (P02)              | 14               | 3.4               | 10               | 2.6               | -23.5                                    |
| RESPIRATORY DISTRESS OF NEWBORN (P22)                    | 8                | 1.9               | 8                | 2.0               | 5.3                                      |
| ATELECTASIS (P28.0-P28.1)                                | 8                | 1.9               | 8                | 2.0               | 5.3                                      |
| NECROTIZING ENTERCOLITIS OF NEWBORN (P77)*               | -                | -                 | 7                | 1.8               | -  |
| ALL OTHER CAUSES   | 120              | 28.8              | 109              | 27.8              | -3.5                                     |

\* Not on the top 10 infant deaths list in the previous year

**Table 9.**  
Breakdown of Infant Deaths due to Accidents  
South Carolina, 2016-2022  
(Residence Data)

|  | 2016      | 2017      | 2018      | 2019      | 2020      | 2021      | 2022      | Total<br>(2016-2022) |
|--|-----------|-----------|-----------|-----------|-----------|-----------|-----------|----------------------|
| Accidental suffocation and strangulation in bed (W75, W84) | 33        | 30        | 34        | 27        | 24        | 25        | 29        | 202                  |
| Other accidental threats to breathing                      | 3         | 1         | 2         | 0         | 0         | 1         | 2         | 9                    |
| Transportation   | 2         | 1         | 1         | 3         | 3         | 0         | 3         | 13                   |
| Drowning   | 0         | 0         | 0         | 2         | 1         | 0         | 0         | 3                    |
| Poison   | 0         | 0         | 0         | 0         | 0         | 0         | 1         | 1                    |
| Other accidents  | 1         | 2         | 1         | 0         | 0         | 0         | 1         | 5                    |
| <b>Total</b>   | <b>39</b> | <b>34</b> | <b>38</b> | <b>32</b> | <b>28</b> | <b>26</b> | <b>36</b> | <b>233</b>           |

**Table 10.**  
Breakdown of Sudden Unexplained Infant Deaths  
South Carolina, 2016-2022  
(Residence Data)

|  | 2016      | 2017      | 2018      | 2019      | 2020      | 2021      | 2022      | Total<br>(2016-2022) |
|--|-----------|-----------|-----------|-----------|-----------|-----------|-----------|----------------------|
| Accidental suffocation and strangulation in bed (W75, W84)         | 33        | 30        | 34        | 27        | 24        | 25        | 29        | 202                  |
| Sudden Infant Death Syndrome (R95)                                 | 27        | 28        | 14        | 19        | 12        | 27        | 35        | 162                  |
| Hanging, strangulation, and suffocation, undetermined intent (Y20) | 1         | 2         | 2         | 1         | 0         | 0         | 2         | 8                    |
| Other ill-defined and unspecified causes of mortality (R99)        | 10        | 10        | 21        | 25        | 14        | 30        | 18        | 128                  |
| <b>Total</b>   | <b>71</b> | <b>70</b> | <b>71</b> | <b>72</b> | <b>50</b> | <b>82</b> | <b>84</b> | <b>500</b>           |



**Table 11.**  
**Leading Causes of Infant Death and Mortality Rates<sup>1</sup>**  
**South Carolina, 2020-2022**  
**(Residence Data)**

**Table 11. South Carolina Infant Death, Resident Data, 2020-2022, All races**

| Rank | Cause of death                                    | Number | Rate |
|------|---|--------|------|
|      | <b>TOTAL INFANT DEATHS</b>                        | 1,172  | 6.9  |
| 1    | CONGENITAL MALFORMATIONS, ETC. (Q00-Q99)          | 211    | 1.2  |
| 2    | DISORDERS RELATED TO SHORT GESTATION, ETC (P07)   | 165    | 1.0  |
| 3    | ACCIDENTS (V01-X59, Y85-Y86)                      | 90     | 0.5  |
| 4    | NEWBORN AFF BY MATERNAL COMP OF PREG (P01)        | 77     | 0.5  |
| 5    | SUDDEN INFANT DEATH SYNDROME (R95)                | 74     | 0.4  |
| 6    | NEWBORN AFF BY COMP OF PLACENTA, ETC (P02)        | 44     | 0.3  |
| 7    | BACTERIAL SEPSIS OF NEWBORN (P36)                 | 42     | 0.2  |
| 8    | INTRAUTERINE HYPOXIA AND BIRTH ASPHYXIA (P20-P21) | 29     | 0.2  |
| 9    | DZ OF CIRCULATORY SYSTEM (I00-I99)                | 26     | 0.2  |
| 10   | RESPIRATORY DISTRESS OF NEWBORN (P22)             | 24     | 0.1  |
|      | ALL OTHER CAUSES                                  | 390    | 2.3  |

<sup>1</sup>Rates per 1,000 live births. Rates calculated with 20 or fewer deaths are unreliable and should be used cautiously.

**Table 12.**

Comparison of Characteristics for All Live Births, by Race and Hispanic Origin of Mother  
 Z-tests for differences in proportions<sup>1</sup>  
 South Carolina, 2021 to 2022  
 (Residence Data)

|  | 2021    |        | 2022    |        | Z-TEST | P-VALUE |
|--|---------|--------|---------|--------|--------|---------|
|  | Percent | Number | Percent | Number |        |         |

| MOTHER < 18 YEARS  |      |     |      |     |         |        |
|--------------------|------|-----|------|-----|---------|--------|
| TOTAL <sup>2</sup> | 1.38 | 787 | 1.49 | 862 | 1.6295  | 0.1032 |
| Non-Hispanic White | 0.82 | 267 | 0.78 | 257 | -0.5377 | 0.5908 |
| Non-Hispanic Black | 2.01 | 337 | 2.38 | 391 | 2.2964  | 0.0217 |
| Non-Hispanic Other | 0.68 | 12  | 0.50 | 9   | -0.6825 | 0.4949 |
| Hispanic           | 2.79 | 171 | 3.01 | 205 | 0.7496  | 0.4535 |

| MARITAL STATUS: UNMARRIED |       |        |       |        |         |        |
|---------------------------|-------|--------|-------|--------|---------|--------|
| TOTAL <sup>2</sup>        | 45.11 | 25,796 | 44.86 | 25,939 | -0.8829 | 0.3773 |
| Non-Hispanic White        | 28.82 | 9,382  | 28.41 | 9,329  | -1.1569 | 0.2473 |
| Non-Hispanic Black        | 76.80 | 12,851 | 76.71 | 12,582 | -0.1943 | 0.8459 |
| Non-Hispanic Other        | 20.69 | 365    | 20.85 | 372    | 0.1178  | 0.9063 |
| Hispanic                  | 52.15 | 3,198  | 53.69 | 3,656  | 1.7448  | 0.0810 |

| OBESE PRIOR TO PREGNANCY |       |        |       |        |         |        |
|--------------------------|-------|--------|-------|--------|---------|--------|
| TOTAL <sup>2</sup>       | 34.54 | 19,750 | 35.01 | 20,246 | 1.6736  | 0.0942 |
| Non-Hispanic White       | 29.22 | 9,511  | 30.63 | 10,055 | 3.9252  | 0.0001 |
| Non-Hispanic Black       | 47.49 | 7,947  | 47.35 | 7,766  | -0.2645 | 0.7914 |
| Non-Hispanic Other       | 19.33 | 341    | 19.17 | 342    | -0.1214 | 0.9034 |
| Hispanic                 | 31.82 | 1,951  | 30.59 | 2,083  | -1.5076 | 0.1317 |

| TOBACCO USE DURING PREGNANCY |      |       |      |       |         |        |
|------------------------------|------|-------|------|-------|---------|--------|
| TOTAL <sup>2</sup>           | 5.24 | 2,998 | 4.26 | 2,463 | -7.8453 | 0.0000 |
| Non-Hispanic White           | 6.86 | 2,234 | 5.50 | 1,805 | -7.2520 | 0.0000 |
| Non-Hispanic Black           | 3.80 | 636   | 3.55 | 582   | -1.2214 | 0.2219 |
| Non-Hispanic Other           | 2.04 | 36    | 1.29 | 23    | -1.7504 | 0.0800 |
| Hispanic                     | 1.50 | 92    | 0.78 | 53    | -3.8968 | 0.0001 |

| VERY LOW BIRTHWEIGHT |      |       |      |       |         |        |
|----------------------|------|-------|------|-------|---------|--------|
| TOTAL <sup>2</sup>   | 1.82 | 1,042 | 1.82 | 1,055 | 0.0257  | 0.9795 |
| Non-Hispanic White   | 1.12 | 364   | 1.21 | 396   | 1.0480  | 0.2946 |
| Non-Hispanic Black   | 3.45 | 577   | 3.32 | 545   | -0.6315 | 0.5277 |
| Non-Hispanic Other   | 1.64 | 29    | 1.85 | 33    | 0.4677  | 0.6400 |
| Hispanic             | 1.17 | 72    | 1.19 | 81    | 0.0802  | 0.9361 |

<sup>1</sup>Proportions are expressed as percentages

<sup>2</sup>Includes unknown race/ethnicity of mother

**Table 12.**

Comparison of Characteristics for All Live Births, by Race and Hispanic Origin of Mother  
 Z-tests for differences in proportions<sup>1</sup>  
 South Carolina, 2021 to 2022  
 (Residence Data)

|                        | 2021    |        | 2022    |        | Z-TEST  | P-VALUE |
|------------------------|---------|--------|---------|--------|---------|---------|
|                        | Percent | Number | Percent | Number |         |         |
| <b>LOW BIRTHWEIGHT</b> |         |        |         |        |         |         |
| TOTAL <sup>2</sup>     | 10.02   | 5,730  | 10.03   | 5,798  | 0.0289  | 0.9769  |
| Non-Hispanic White     | 7.48    | 2,435  | 7.33    | 2,406  | -0.7450 | 0.4563  |
| Non-Hispanic Black     | 15.92   | 2,664  | 16.52   | 2,710  | 1.4857  | 0.1374  |
| Non-Hispanic Other     | 9.30    | 164    | 9.98    | 178    | 0.6867  | 0.4923  |
| Hispanic               | 7.62    | 467    | 7.40    | 504    | -0.4634 | 0.6431  |

<sup>1</sup>Proportions are expressed as percentages

<sup>2</sup>Includes unknown race/ethnicity of mother

**Table 12. (continued)**

Comparison of Characteristics for All Live Births, by Race and Hispanic Origin of Mother

Z-tests for differences in proportions<sup>1</sup>

South Carolina, 2021 to 2022

(Residence Data)

|  | 2021    |        | 2022    |        | Z-TEST  | P-VALUE |
|--|---------|--------|---------|--------|---------|---------|
|  | Percent | Number | Percent | Number |         |         |
| <b>PREMATURE BIRTHS (&lt; 37 WEEKS)</b>          |         |        |         |        |         |         |
| TOTAL <sup>2</sup>                               | 11.83   | 6,766  | 11.62   | 6,718  | -1.1374 | 0.2554  |
| Non-Hispanic White                               | 10.23   | 3,330  | 10.05   | 3,300  | -0.7592 | 0.4478  |
| Non-Hispanic Black                               | 15.54   | 2,600  | 15.70   | 2,575  | 0.4040  | 0.6862  |
| Non-Hispanic Other                               | 10.66   | 188    | 9.47    | 169    | -1.1727 | 0.2409  |
| Hispanic   | 10.57   | 648    | 9.90    | 674    | -1.2573 | 0.2087  |
| <b>VERY PREMATURE BIRTHS (&lt; 32 WEEKS)</b>     |         |        |         |        |         |         |
| TOTAL <sup>2</sup>                               | 1.93    | 1,104  | 1.89    | 1,091  | -0.5471 | 0.5843  |
| Non-Hispanic White                               | 1.27    | 415    | 1.31    | 430    | 0.3932  | 0.6942  |
| Non-Hispanic Black                               | 3.42    | 572    | 3.19    | 523    | -1.1698 | 0.2421  |
| Non-Hispanic Other                               | 1.59    | 28     | 2.19    | 39     | 1.3102  | 0.1901  |
| Hispanic   | 1.45    | 89     | 1.45    | 99     | 0.0111  | 0.9911  |
| <b>PREMATURE 32-36 WEEKS BIRTHS</b>              |         |        |         |        |         |         |
| TOTAL <sup>2</sup>                               | 9.90    | 5,662  | 9.73    | 5,627  | -0.9783 | 0.3279  |
| Non-Hispanic White                               | 8.96    | 2,915  | 8.74    | 2,870  | -0.9633 | 0.3354  |
| Non-Hispanic Black                               | 12.12   | 2,028  | 12.51   | 2,052  | 1.0827  | 0.2789  |
| Non-Hispanic Other                               | 9.07    | 160    | 7.29    | 130    | -1.9386 | 0.0526  |
| Hispanic   | 9.12    | 559    | 8.44    | 575    | -1.3513 | 0.1766  |
| <b>KOTELCHUCK INDEX: ADEQUATE, ADEQUATE PLUS</b> |         |        |         |        |         |         |
| TOTAL <sup>2</sup>                               | 74.34   | 42,506 | 77.08   | 44,572 | 10.8283 | 0.0000  |
| Non-Hispanic White                               | 79.34   | 25,825 | 83.03   | 27,260 | 12.0700 | 0.0000  |
| Non-Hispanic Black                               | 70.03   | 11,718 | 72.42   | 11,878 | 4.8014  | 0.0000  |
| Non-Hispanic Other                               | 68.37   | 1,206  | 72.87   | 1,300  | 2.9443  | 0.0032  |
| Hispanic   | 61.27   | 3,757  | 60.70   | 4,134  | -0.6566 | 0.5114  |
| <b>KOTELCHUCK INDEX: INADEQUATE</b>              |         |        |         |        |         |         |
| TOTAL <sup>2</sup>                               | 15.13   | 8,652  | 17.80   | 10,295 | 12.2107 | 0.0000  |
| Non-Hispanic White                               | 11.43   | 3,722  | 12.93   | 4,245  | 5.8420  | 0.0000  |
| Non-Hispanic Black                               | 17.99   | 3,011  | 21.25   | 3,485  | 7.4573  | 0.0000  |
| Non-Hispanic Other                               | 16.61   | 293    | 21.92   | 391    | 4.0066  | 0.0001  |
| Hispanic   | 26.52   | 1,626  | 31.92   | 2,174  | 6.7440  | 0.0000  |
| <b>&lt; 5 PRENATAL CARE VISITS</b>               |         |        |         |        |         |         |
| TOTAL <sup>2</sup>                               | 4.00    | 2,287  | 6.58    | 3,807  | 19.5561 | 0.0000  |
| Non-Hispanic White                               | 2.94    | 956    | 4.62    | 1,518  | 11.3003 | 0.0000  |
| Non-Hispanic Black                               | 4.93    | 825    | 8.11    | 1,330  | 11.7306 | 0.0000  |
| Non-Hispanic Other                               | 3.57    | 63     | 7.51    | 134    | 5.1238  | 0.0000  |
| Hispanic   | 7.22    | 443    | 12.11   | 825    | 9.3439  | 0.0000  |

<sup>1</sup>Proportions are expressed as percentages<sup>2</sup>Includes unknown race/ethnicity of mother

**Table 12. (continued)**

Comparison of Characteristics for All Live Births, by Race and Hispanic Origin of Mother  
 Z-tests for differences in proportions<sup>1</sup>  
 South Carolina, 2021 to 2022  
 (Residence Data)

|  | 2021    |        | 2022    |        | Z-TEST  | P-VALUE |
|--|---------|--------|---------|--------|---------|---------|
|  | Percent | Number | Percent | Number |         |         |
| <b>PRENATAL CARE BEGAN FIRST TRIMESTER</b> |         |        |         |        |         |         |
| TOTAL <sup>2</sup>                         | 70.88   | 40,531 | 73.31   | 42,395 | 9.1790  | 0.0000  |
| Non-Hispanic White                         | 76.17   | 24,793 | 79.17   | 25,994 | 9.2224  | 0.0000  |
| Non-Hispanic Black                         | 66.43   | 11,116 | 69.24   | 11,356 | 5.4623  | 0.0000  |
| Non-Hispanic Other                         | 63.66   | 1,123  | 68.27   | 1,218  | 2.8988  | 0.0037  |
| Hispanic                                   | 57.06   | 3,499  | 56.20   | 3,827  | -0.9909 | 0.3217  |

<sup>1</sup>Proportions are expressed as percentages

<sup>2</sup>Includes unknown race/ethnicity of mother

**Table 12-A.**

Comparison of Characteristics of Infants who Died, by Race and Hispanic Origin of Mother  
 Z-tests for differences in proportions<sup>1</sup>  
 South Carolina, 2021 to 2022  
 (Residence Data)

|  | 2021    |        | 2022    |        | Z-TEST | P-VALUE |
|--|---------|--------|---------|--------|--------|---------|
|  | Percent | Number | Percent | Number |        |         |

| MOTHER < 18 YEARS  |      |   |      |    |        |        |
|--------------------|------|---|------|----|--------|--------|
| TOTAL <sup>2</sup> | 2.16 | 9 | 3.32 | 13 | 1.0064 | 0.3142 |
| Non-Hispanic White | 2.37 | 4 | 3.49 | 6  | 0.6137 | 0.5394 |
| Non-Hispanic Black | 2.36 | 5 | 3.28 | 6  | 0.5543 | 0.5794 |
| Non-Hispanic Other | 0.00 | 0 | 0.00 | 0  | -      | -      |
| Hispanic           | 0.00 | 0 | 3.57 | 1  | 1.0612 | 0.2886 |

| MARITAL STATUS: UNMARRIED |       |     |       |     |         |        |
|---------------------------|-------|-----|-------|-----|---------|--------|
| TOTAL <sup>2</sup>        | 60.10 | 250 | 61.22 | 240 | 0.3281  | 0.7428 |
| Non-Hispanic White        | 39.05 | 66  | 44.77 | 77  | 1.0691  | 0.2850 |
| Non-Hispanic Black        | 77.83 | 165 | 78.69 | 144 | 0.2061  | 0.8367 |
| Non-Hispanic Other        | 50.00 | 2   | 33.33 | 3   | -0.5701 | 0.5686 |
| Hispanic                  | 54.84 | 17  | 57.14 | 16  | 0.1780  | 0.8587 |

| OBESE PRIOR TO PREGNANCY |       |     |       |     |         |        |
|--------------------------|-------|-----|-------|-----|---------|--------|
| TOTAL <sup>2</sup>       | 45.91 | 191 | 43.62 | 171 | -0.6545 | 0.5128 |
| Non-Hispanic White       | 39.05 | 66  | 37.79 | 65  | -0.2397 | 0.8106 |
| Non-Hispanic Black       | 51.89 | 110 | 51.91 | 95  | 0.0051  | 0.9959 |
| Non-Hispanic Other       | 0.00  | 0   | 22.22 | 2   | 1.0249  | 0.3054 |
| Hispanic                 | 48.39 | 15  | 32.14 | 9   | -1.2684 | 0.2047 |

| TOBACCO USE DURING PREGNANCY |      |    |       |    |        |        |
|------------------------------|------|----|-------|----|--------|--------|
| TOTAL <sup>2</sup>           | 5.05 | 21 | 8.93  | 35 | 2.1706 | 0.0300 |
| Non-Hispanic White           | 9.47 | 16 | 13.37 | 23 | 1.1327 | 0.2573 |
| Non-Hispanic Black           | 2.36 | 5  | 6.01  | 11 | 1.8361 | 0.0663 |
| Non-Hispanic Other           | 0.00 | 0  | 0.00  | 0  | -      | -      |
| Hispanic                     | 0.00 | 0  | 3.57  | 1  | 1.0612 | 0.2886 |

| VERY LOW BIRTHWEIGHT |       |     |       |     |         |        |
|----------------------|-------|-----|-------|-----|---------|--------|
| TOTAL <sup>2</sup>   | 47.60 | 198 | 50.51 | 198 | 0.8281  | 0.4076 |
| Non-Hispanic White   | 36.69 | 62  | 40.70 | 70  | 0.7603  | 0.4471 |
| Non-Hispanic Black   | 54.72 | 116 | 59.02 | 108 | 0.8600  | 0.3898 |
| Non-Hispanic Other   | 50.00 | 2   | 44.44 | 4   | -0.1854 | 0.8529 |
| Hispanic             | 58.06 | 18  | 57.14 | 16  | -0.0715 | 0.9430 |

| LOW BIRTHWEIGHT    |       |     |       |     |        |        |
|--------------------|-------|-----|-------|-----|--------|--------|
| TOTAL <sup>2</sup> | 65.87 | 274 | 66.58 | 261 | 0.2151 | 0.8297 |
| Non-Hispanic White | 57.40 | 97  | 58.72 | 101 | 0.2478 | 0.8043 |
| Non-Hispanic Black | 71.23 | 151 | 72.13 | 132 | 0.1989 | 0.8423 |
| Non-Hispanic Other | 75.00 | 3   | 77.78 | 7   | 0.1097 | 0.9126 |
| Hispanic           | 74.19 | 23  | 75.00 | 21  | 0.0710 | 0.9434 |

<sup>1</sup>Proportions are expressed as percentages

<sup>2</sup>Includes unknown race/ethnicity of mother

**Table 12-A. (continued)**

Comparison of Characteristics of Infants who Died, by Race and Hispanic Origin of Mother

Z-tests for differences in proportions<sup>1</sup>

South Carolina, 2021 to 2022

(Residence Data)

|  | 2021    |        | 2022    |        | Z-TEST | P-VALUE |
|--|---------|--------|---------|--------|--------|---------|
|  | Percent | Number | Percent | Number |        |         |

| PREMATURE BIRTHS (< 37 WEEKS) |        |     |       |     |         |        |
|-------------------------------|--------|-----|-------|-----|---------|--------|
| TOTAL <sup>2</sup>            | 67.07  | 279 | 65.31 | 256 | -0.5290 | 0.5968 |
| Non-Hispanic White            | 63.31  | 107 | 56.40 | 97  | -1.3029 | 0.1926 |
| Non-Hispanic Black            | 67.92  | 144 | 72.68 | 133 | 1.0292  | 0.3034 |
| Non-Hispanic Other            | 100.00 | 4   | 66.67 | 6   | -1.3166 | 0.1880 |
| Hispanic                      | 77.42  | 24  | 71.43 | 20  | -0.5277 | 0.5977 |

| VERY PREMATURE BIRTHS (< 32 WEEKS) |       |     |       |     |         |        |
|------------------------------------|-------|-----|-------|-----|---------|--------|
| TOTAL <sup>2</sup>                 | 48.56 | 202 | 48.72 | 191 | 0.0474  | 0.9622 |
| Non-Hispanic White                 | 39.64 | 67  | 40.70 | 70  | 0.1983  | 0.8428 |
| Non-Hispanic Black                 | 54.25 | 115 | 55.19 | 101 | 0.1883  | 0.8506 |
| Non-Hispanic Other                 | 50.00 | 2   | 44.44 | 4   | -0.1854 | 0.8529 |
| Hispanic                           | 58.06 | 18  | 57.14 | 16  | -0.0715 | 0.9430 |

| PREMATURE 32-36 WEEKS BIRTHS |       |    |       |    |         |        |
|------------------------------|-------|----|-------|----|---------|--------|
| TOTAL <sup>2</sup>           | 18.51 | 77 | 16.58 | 65 | -0.7196 | 0.4717 |
| Non-Hispanic White           | 23.67 | 40 | 15.70 | 27 | -1.8522 | 0.0640 |
| Non-Hispanic Black           | 13.68 | 29 | 17.49 | 32 | 1.0441  | 0.2964 |
| Non-Hispanic Other           | 50.00 | 2  | 22.22 | 2  | -1.0015 | 0.3166 |
| Hispanic                     | 19.35 | 6  | 14.29 | 4  | -0.5182 | 0.6043 |

| KOTELCHUCK INDEX: ADEQUATE, ADEQUATE PLUS |       |     |       |     |        |        |
|---|-------|-----|-------|-----|--------|--------|
| TOTAL <sup>2</sup>                        | 58.65 | 244 | 65.82 | 258 | 2.0977 | 0.0359 |
| Non-Hispanic White                        | 60.95 | 103 | 72.67 | 125 | 2.3003 | 0.0214 |
| Non-Hispanic Black                        | 58.49 | 124 | 61.20 | 112 | 0.5480 | 0.5837 |
| Non-Hispanic Other                        | 50.00 | 2   | 55.56 | 5   | 0.1854 | 0.8529 |
| Hispanic                                  | 48.39 | 15  | 57.14 | 16  | 0.6725 | 0.5012 |

| KOTELCHUCK INDEX: INADEQUATE |       |    |       |     |         |        |
|------------------------------|-------|----|-------|-----|---------|--------|
| TOTAL <sup>2</sup>           | 20.43 | 85 | 28.83 | 113 | 2.7724  | 0.0056 |
| Non-Hispanic White           | 20.71 | 35 | 21.51 | 37  | 0.1813  | 0.8561 |
| Non-Hispanic Black           | 19.81 | 42 | 33.88 | 62  | 3.1657  | 0.0015 |
| Non-Hispanic Other           | 50.00 | 2  | 44.44 | 4   | -0.1854 | 0.8529 |
| Hispanic                     | 19.35 | 6  | 35.71 | 10  | 1.4114  | 0.1581 |

<sup>1</sup>Proportions are expressed as percentages<sup>2</sup>Includes unknown race/ethnicity of mother

**Table 12-A. (continued)**

Comparison of Characteristics of Infants who Died, by Race and Hispanic Origin of Mother  
 Z-tests for differences in proportions<sup>1</sup>  
 South Carolina, 2021 to 2022  
 (Residence Data)

|  | 2019    |        | 2020    |        | Z-TEST | P-VALUE |
|--|---------|--------|---------|--------|--------|---------|
|  | Percent | Number | Percent | Number |        |         |

| < 5 PRENATAL CARE VISITS |       |    |       |     |         |        |
|--------------------------|-------|----|-------|-----|---------|--------|
| TOTAL <sup>2</sup>       | 17.55 | 73 | 33.42 | 131 | 5.1898  | 0.0000 |
| Non-Hispanic White       | 15.38 | 26 | 23.84 | 41  | 1.9641  | 0.0495 |
| Non-Hispanic Black       | 17.92 | 38 | 40.44 | 74  | 4.9501  | 0.0000 |
| Non-Hispanic Other       | 50.00 | 2  | 33.33 | 3   | -0.5701 | 0.5686 |
| Hispanic                 | 22.58 | 7  | 46.43 | 13  | 1.9324  | 0.0533 |

| PRENATAL CARE BEGAN FIRST TRIMESTER |       |     |       |     |         |        |
|-------------------------------------|-------|-----|-------|-----|---------|--------|
| TOTAL <sup>2</sup>                  | 53.61 | 223 | 59.18 | 232 | 1.5976  | 0.1101 |
| Non-Hispanic White                  | 59.17 | 100 | 62.21 | 107 | 0.5742  | 0.5658 |
| Non-Hispanic Black                  | 50.47 | 107 | 59.02 | 108 | 1.7003  | 0.0891 |
| Non-Hispanic Other                  | 50.00 | 2   | 33.33 | 3   | -0.5701 | 0.5686 |
| Hispanic                            | 45.16 | 14  | 50.00 | 14  | 0.3717  | 0.7101 |

<sup>1</sup>Proportions are expressed as percentages

<sup>2</sup>Includes unknown race/ethnicity of mother



**Table 13.**  
Multiple Births Trends  
South Carolina, 2018-2022  
(Residence Data)

| Year  | Singleton Births | Singleton Deaths | Infant Mortality Rate <sup>1</sup> | Twin Births | Twin Deaths | Infant Mortality Rate <sup>1</sup> | Higher Order (3+) Births | Higher Order (3+) Deaths | Infant Mortality Rate <sup>1</sup> | Total Births <sup>2</sup> | Total Deaths <sup>2</sup> | Infant Mortality Rate <sup>1</sup> |
|-------|------------------|------------------|------------------------------------|-------------|-------------|------------------------------------|--------------------------|--------------------------|------------------------------------|---------------------------|---------------------------|------------------------------------|
| 2018  | 54,784           | 352              | 6.4                                | 1,860       | 49          | 26.3                               | 24                       | 4                        | 166.7                              | 56,668                    | 406                       | 7.2                                |
| 2019  | 55,089           | 340              | 6.2                                | 1,892       | 38          | 20.1                               | 63                       | 10                       | 158.7                              | 57,044                    | 391                       | 6.9                                |
| 2020  | 53,758           | 315              | 5.9                                | 1,914       | 46          | 24.0                               | 40                       | 3                        | 75.0                               | 55,713                    | 364                       | 6.5                                |
| 2021  | 55,286           | 346              | 6.3                                | 1,838       | 58          | 31.6                               | 51                       | 7                        | 137.3                              | 57,179                    | 416                       | 7.3                                |
| 2022  | 55,848           | 345              | 6.2                                | 1,918       | 37          | 19.3                               | 55                       | 5                        | 90.9                               | 57,828                    | 392                       | 6.9                                |
| Total | 274,765          | 1,698            | 6.2                                | 9,422       | 228         | 24.2                               | 233                      | 29                       | 124.5                              | 284,432                   | 1,969                     | 6.9                                |

<sup>1</sup>Rates are per 1,000 births. Rates calculated with 20 or fewer deaths are unreliable and should be used cautiously

<sup>2</sup>Includes unknown plurality

**Table 14.**  
 Infant Mortality Rates<sup>1</sup> by Race and Hispanic Origin of Mother and Birthweight<sup>2</sup> Group  
 South Carolina  
 2020, 2021, and 2022  
 (Residence Data)

| <b>Infant Mortality for Very Low Birthweight (0-1499 grams)</b> |                        |                         |       |                       |                         |       |                       |                         |       |                       |                         |       |                       |                         |       |
|---|------------------------|-------------------------|-------|-----------------------|-------------------------|-------|-----------------------|-------------------------|-------|-----------------------|-------------------------|-------|-----------------------|-------------------------|-------|
|   | Total                  |                         |       | Non-Hispanic White    |                         |       | Non-Hispanic Black    |                         |       | Non-Hispanic Other    |                         |       | Hispanic              |                         |       |
| Year  | Number of Live Births* | Number of Infant Deaths | Rate  | Number of Live Births | Number of Infant Deaths | Rate  | Number of Live Births | Number of Infant Deaths | Rate  | Number of Live Births | Number of Infant Deaths | Rate  | Number of Live Births | Number of Infant Deaths | Rate  |
| 2020  | 961                    | 204                     | 212.3 | 302                   | 69                      | 228.5 | 571                   | 117                     | 204.9 | 27                    | 5                       | 185.2 | 61                    | 13                      | 213.1 |
| 2021  | 1,042                  | 198                     | 206.0 | 364                   | 62                      | 170.3 | 577                   | 116                     | 201.0 | 29                    | 2                       | 69.0  | 72                    | 18                      | 250.0 |
| 2022  | 1,055                  | 198                     | 187.7 | 396                   | 70                      | 176.8 | 545                   | 108                     | 198.2 | 33                    | 4                       | 121.2 | 81                    | 16                      | 197.5 |

| <b>Infant Mortality for Intermediate Low Birthweight (1500-2499 grams)</b> |                        |                         |      |                       |                         |      |                       |                         |      |                       |                         |      |                       |                         |      |
|--|------------------------|-------------------------|------|-----------------------|-------------------------|------|-----------------------|-------------------------|------|-----------------------|-------------------------|------|-----------------------|-------------------------|------|
|  | Total                  |                         |      | Non-Hispanic White    |                         |      | Non-Hispanic Black    |                         |      | Non-Hispanic Other    |                         |      | Hispanic              |                         |      |
| Year   | Number of Live Births* | Number of Infant Deaths | Rate | Number of Live Births | Number of Infant Deaths | Rate | Number of Live Births | Number of Infant Deaths | Rate | Number of Live Births | Number of Infant Deaths | Rate | Number of Live Births | Number of Infant Deaths | Rate |
| 2020   | 4,519                  | 44                      | 9.7  | 1,971                 | 14                      | 7.1  | 2,042                 | 23                      | 11.3 | 129                   | 1                       | 7.8  | 377                   | 6                       | 15.9 |
| 2021   | 4,688                  | 76                      | 16.8 | 2,071                 | 35                      | 16.9 | 2,087                 | 35                      | 16.8 | 135                   | 1                       | 7.4  | 395                   | 5                       | 12.7 |
| 2022   | 4,743                  | 63                      | 13.3 | 2,010                 | 31                      | 15.4 | 2,165                 | 24                      | 11.1 | 145                   | 3                       | 20.7 | 423                   | 5                       | 11.8 |

| <b>Infant Mortality for Normal Birthweight (2500+ grams)</b> |                        |                         |      |                       |                         |      |                       |                         |      |                       |                         |      |                       |                         |      |
|--|------------------------|-------------------------|------|-----------------------|-------------------------|------|-----------------------|-------------------------|------|-----------------------|-------------------------|------|-----------------------|-------------------------|------|
|  | Total                  |                         |      | Non-Hispanic White    |                         |      | Non-Hispanic Black    |                         |      | Non-Hispanic Other    |                         |      | Hispanic              |                         |      |
| Year   | Number of Live Births* | Number of Infant Deaths | Rate | Number of Live Births | Number of Infant Deaths | Rate | Number of Live Births | Number of Infant Deaths | Rate | Number of Live Births | Number of Infant Deaths | Rate | Number of Live Births | Number of Infant Deaths | Rate |
| 2020   | 50,229                 | 115                     | 2.3  | 28,957                | 55                      | 1.9  | 14,437                | 45                      | 3.1  | 1,457                 | 4                       | 2.7  | 5,378                 | 11                      | 2.0  |
| 2021   | 51,440                 | 136                     | 2.7  | 30,112                | 70                      | 2.3  | 14,067                | 57                      | 4.1  | 1,596                 | 1                       | 0.6  | 5,665                 | 29                      | 5.1  |
| 2022   | 52,026                 | 126                     | 2.4  | 30,425                | 67                      | 2.2  | 13,691                | 50                      | 3.7  | 1,604                 | 2                       | 1.2  | 6,306                 | 7                       | 1.1  |

<sup>1</sup>Rates per 1,000 live births

<sup>2</sup>Does not include missing birthweight

\*Includes unknown race/ethnicity of mother

**Table 14.**  
 Infant Mortality Rates<sup>1</sup> by Race and Hispanic Origin of Mother and Birthweight<sup>2</sup> Group  
 South Carolina  
 2020, 2021, and 2022  
 (Residence Data)

| <b>Neonatal Mortality for Very Low Birthweight (0-1499 grams)</b> |                        |                         |       |                       |                         |       |                       |                         |       |                       |                         |       |                       |                         |       |
|---|------------------------|-------------------------|-------|-----------------------|-------------------------|-------|-----------------------|-------------------------|-------|-----------------------|-------------------------|-------|-----------------------|-------------------------|-------|
|   | Total                  |                         |       | Non-Hispanic White    |                         |       | Non-Hispanic Black    |                         |       | Non-Hispanic Other    |                         |       | Hispanic              |                         |       |
| Year  | Number of Live Births* | Number of Infant Deaths | Rate  | Number of Live Births | Number of Infant Deaths | Rate  | Number of Live Births | Number of Infant Deaths | Rate  | Number of Live Births | Number of Infant Deaths | Rate  | Number of Live Births | Number of Infant Deaths | Rate  |
| 2020  | 961                    | 173                     | 180.0 | 302                   | 60                      | 198.7 | 571                   | 100                     | 175.1 | 27                    | 3                       | 111.1 | 61                    | 10                      | 163.9 |
| 2021  | 1,042                  | 174                     | 181.1 | 364                   | 55                      | 151.1 | 577                   | 100                     | 173.3 | 29                    | 2                       | 69.0  | 72                    | 17                      | 236.1 |
| 2022  | 1,055                  | 173                     | 164.0 | 396                   | 60                      | 151.5 | 545                   | 93                      | 170.6 | 33                    | 4                       | 121.2 | 81                    | 16                      | 197.5 |

| <b>Neonatal Mortality for Intermediate Low Birthweight (1500-2499 grams)</b> |                        |                         |      |                       |                         |      |                       |                         |      |                       |                         |      |                       |                         |      |
|--|------------------------|-------------------------|------|-----------------------|-------------------------|------|-----------------------|-------------------------|------|-----------------------|-------------------------|------|-----------------------|-------------------------|------|
|  | Total                  |                         |      | Non-Hispanic White    |                         |      | Non-Hispanic Black    |                         |      | Non-Hispanic Other    |                         |      | Hispanic              |                         |      |
| Year   | Number of Live Births* | Number of Infant Deaths | Rate | Number of Live Births | Number of Infant Deaths | Rate | Number of Live Births | Number of Infant Deaths | Rate | Number of Live Births | Number of Infant Deaths | Rate | Number of Live Births | Number of Infant Deaths | Rate |
| 2020   | 4,519                  | 28                      | 6.2  | 1,971                 | 10                      | 5.1  | 2,042                 | 11                      | 5.4  | 129                   | 1                       | 7.8  | 377                   | 6                       | 15.9 |
| 2021   | 4,688                  | 42                      | 9.3  | 2,071                 | 24                      | 11.6 | 2,087                 | 15                      | 7.2  | 135                   | 0                       | 0.0  | 395                   | 3                       | 7.6  |
| 2022   | 4,743                  | 35                      | 7.4  | 2,010                 | 15                      | 7.5  | 2,165                 | 14                      | 6.5  | 145                   | 1                       | 6.9  | 423                   | 5                       | 11.8 |

| <b>Neonatal Mortality for Normal Birthweight (2500+ grams)</b> |                        |                         |      |                       |                         |      |                       |                         |      |                       |                         |      |                       |                         |      |
|--|------------------------|-------------------------|------|-----------------------|-------------------------|------|-----------------------|-------------------------|------|-----------------------|-------------------------|------|-----------------------|-------------------------|------|
|  | Total                  |                         |      | Non-Hispanic White    |                         |      | Non-Hispanic Black    |                         |      | Non-Hispanic Other    |                         |      | Hispanic              |                         |      |
| Year   | Number of Live Births* | Number of Infant Deaths | Rate | Number of Live Births | Number of Infant Deaths | Rate | Number of Live Births | Number of Infant Deaths | Rate | Number of Live Births | Number of Infant Deaths | Rate | Number of Live Births | Number of Infant Deaths | Rate |
| 2020   | 50,229                 | 45                      | 0.9  | 28,957                | 29                      | 1.0  | 14,437                | 11                      | 0.8  | 1,457                 | 3                       | 2.1  | 5,378                 | 2                       | 0.4  |
| 2021   | 51,440                 | 48                      | 1.0  | 30,112                | 27                      | 0.9  | 14,067                | 16                      | 1.1  | 1,596                 | 1                       | 0.6  | 5,665                 | 4                       | 0.7  |
| 2022   | 52,026                 | 48                      | 0.9  | 30,425                | 27                      | 0.9  | 13,691                | 14                      | 1.0  | 1,604                 | 2                       | 1.2  | 6,306                 | 5                       | 0.8  |

<sup>1</sup>Rates per 1,000 live births

<sup>2</sup>Does not include missing birthweight

\*Includes unknown race/ethnicity of mother

**Table 14.**  
 Infant Mortality Rates<sup>1</sup> by Race and Hispanic Origin of Mother and Birthweight<sup>2</sup> Group  
 South Carolina  
 2020, 2021, and 2022  
 (Residence Data)

| <b>Postneonatal Mortality for Very Low Birthweight (0-1499 grams)</b> |                        |                         |      |                       |                         |      |                       |                         |      |                       |                         |      |                       |                         |      |
|---|------------------------|-------------------------|------|-----------------------|-------------------------|------|-----------------------|-------------------------|------|-----------------------|-------------------------|------|-----------------------|-------------------------|------|
|   | Total                  |                         |      | Non-Hispanic White    |                         |      | Non-Hispanic Black    |                         |      | Non-Hispanic Other    |                         |      | Hispanic              |                         |      |
| Year  | Number of Live Births* | Number of Infant Deaths | Rate | Number of Live Births | Number of Infant Deaths | Rate | Number of Live Births | Number of Infant Deaths | Rate | Number of Live Births | Number of Infant Deaths | Rate | Number of Live Births | Number of Infant Deaths | Rate |
| 2020  | 961                    | 31                      | 32.3 | 302                   | 9                       | 29.8 | 571                   | 17                      | 29.8 | 27                    | 2                       | 74.1 | 61                    | 3                       | 49.2 |
| 2021  | 1,042                  | 24                      | 25.0 | 364                   | 7                       | 19.2 | 577                   | 16                      | 27.7 | 29                    | 0                       | 0.0  | 72                    | 1                       | 13.9 |
| 2022  | 1,055                  | 25                      | 23.7 | 396                   | 10                      | 25.3 | 545                   | 15                      | 27.5 | 33                    | 0                       | 0.0  | 81                    | 0                       | 0.0  |

| <b>Postneonatal Mortality for Intermediate Low Birthweight (1500-2499 grams)</b> |                        |                         |      |                       |                         |      |                       |                         |      |                       |                         |      |                       |                         |      |
|--|------------------------|-------------------------|------|-----------------------|-------------------------|------|-----------------------|-------------------------|------|-----------------------|-------------------------|------|-----------------------|-------------------------|------|
|  | Total                  |                         |      | Non-Hispanic White    |                         |      | Non-Hispanic Black    |                         |      | Non-Hispanic Other    |                         |      | Hispanic              |                         |      |
| Year   | Number of Live Births* | Number of Infant Deaths | Rate | Number of Live Births | Number of Infant Deaths | Rate | Number of Live Births | Number of Infant Deaths | Rate | Number of Live Births | Number of Infant Deaths | Rate | Number of Live Births | Number of Infant Deaths | Rate |
| 2020   | 4,519                  | 16                      | 3.5  | 1,971                 | 4                       | 2.0  | 2,042                 | 12                      | 5.9  | 129                   | 0                       | 0.0  | 377                   | 0                       | 0.0  |
| 2021   | 4,688                  | 34                      | 7.5  | 2,071                 | 11                      | 5.3  | 2,087                 | 20                      | 9.6  | 135                   | 1                       | 7.4  | 395                   | 2                       | 5.1  |
| 2022   | 4,743                  | 28                      | 5.9  | 2,010                 | 16                      | 8.0  | 2,165                 | 10                      | 4.6  | 145                   | 2                       | 13.8 | 423                   | 0                       | 0.0  |

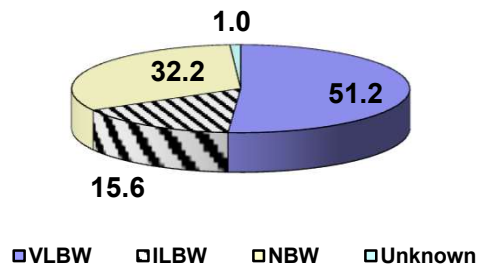
| <b>Postneonatal Mortality for Normal Birthweight (2500+ grams)</b> |                        |                         |      |                       |                         |      |                       |                         |      |                       |                         |      |                       |                         |      |
|--|------------------------|-------------------------|------|-----------------------|-------------------------|------|-----------------------|-------------------------|------|-----------------------|-------------------------|------|-----------------------|-------------------------|------|
|  | Total                  |                         |      | Non-Hispanic White    |                         |      | Non-Hispanic Black    |                         |      | Non-Hispanic Other    |                         |      | Hispanic              |                         |      |
| Year   | Number of Live Births* | Number of Infant Deaths | Rate | Number of Live Births | Number of Infant Deaths | Rate | Number of Live Births | Number of Infant Deaths | Rate | Number of Live Births | Number of Infant Deaths | Rate | Number of Live Births | Number of Infant Deaths | Rate |
| 2020   | 50,229                 | 70                      | 1.4  | 28,957                | 26                      | 0.9  | 14,437                | 34                      | 2.4  | 1,457                 | 1                       | 0.7  | 5,378                 | 9                       | 1.7  |
| 2021   | 51,440                 | 88                      | 1.8  | 30,112                | 43                      | 1.4  | 14,067                | 41                      | 2.9  | 1,596                 | 0                       | 0.0  | 5,665                 | 4                       | 0.7  |
| 2022   | 52,026                 | 78                      | 1.5  | 30,425                | 40                      | 1.3  | 13,691                | 36                      | 2.6  | 1,604                 | 0                       | 0.0  | 6,306                 | 2                       | 0.3  |

<sup>1</sup>Rates per 1,000 live births

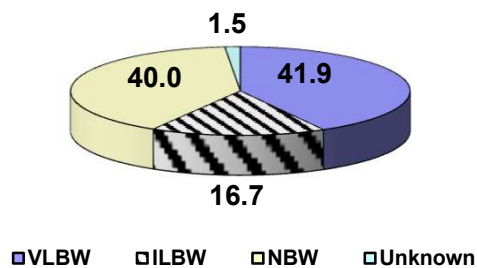
<sup>2</sup>Does not include missing birthweight

\*Includes unknown race/ethnicity of mother

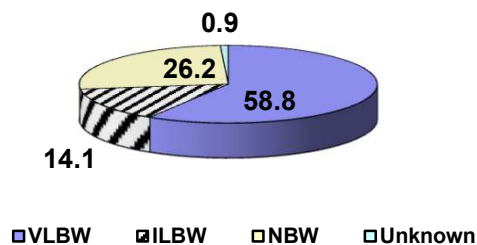
**Figure 1.**  
**Percentage of Infant Deaths by Birthweight Group**  
**South Carolina, 2020-2022, Residence Data**



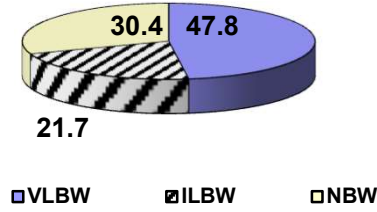
**Figure 1-A.**  
**Percentage of Non-Hispanic White Infant Deaths by Birthweight Group**  
**South Carolina, 2020-2022, Residence Data**



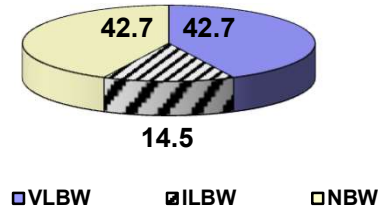
**Figure 1-B.**  
**Percentage of Non-Hispanic Black Infant Deaths by Birthweight Group**  
**South Carolina, 2020-2022, Residence Data**



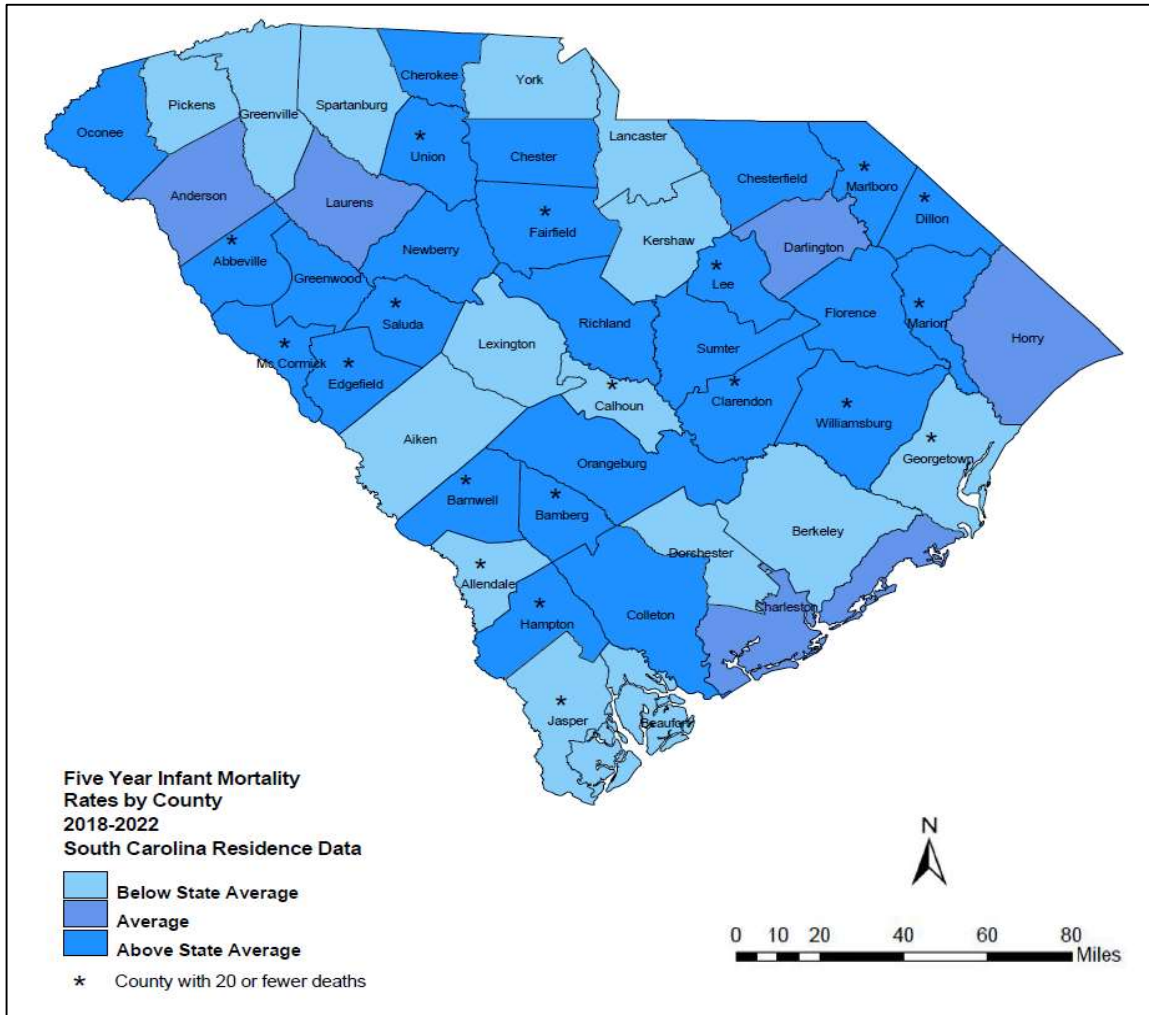
**Figure 1-C.**  
**Percentage of Non-Hispanic Other Infant Deaths by Birthweight Group**  
**South Carolina, 2020-2022, Residence Data**



**Figure 1-D.**  
**Percentage of Hispanic Infant Deaths by Birthweight Group South**  
**Carolina, 2020-2022, Residence Data**



**Figure 2.**  
**Five Year Infant Mortality Rates<sup>1</sup> by County**  
**South Carolina**  
**2018-2022**  
**(Residence Data)**



**Above State Average** indicates a rate greater than 7.2.  
**State Average** indicates a rate between 6.6 and 7.2 inclusive.  
**Below State Average** indicates a rate lower than 6.6.

<sup>1</sup>Rate per 1,000 live births. Rates calculated with 20 or fewer deaths are unreliable and should be used cautiously.