

# Suicide

## and Self-Inflicted Injuries in South Carolina

2017 DATA

White males age 45 to 64 are the most at-risk group

### SUICIDE RATES AT A GLANCE



In the United States, South Carolina ranks 26th in the nation in suicide rates, 24th in teen suicides ages 12-19, and 31st in drug-related suicides.



Suicide is the **10<sup>th</sup> leading cause of death** in the state.



The South Carolina suicide rate is **60% higher than the Healthy People 2020 target** and **16% higher than the national rate.**

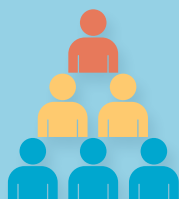


The suicide rate in SC has increased by **36%** in ten years (2008-2017).  
The number of suicide deaths have increased **50%** in ten years (2008-2017).



Suicide deaths **have doubled since 1999** from 419 to 838 statewide.

### THE IMPACT OF SELF-INFLICTED INJURIES



For **every person** who died by suicide in 2017, two were hospitalized and four visited the Emergency Department for intentional self-harm. Every day in SC two people die by suicide, five are admitted to the hospital and 9 visit the Emergency Department for intentional self-harm injuries.

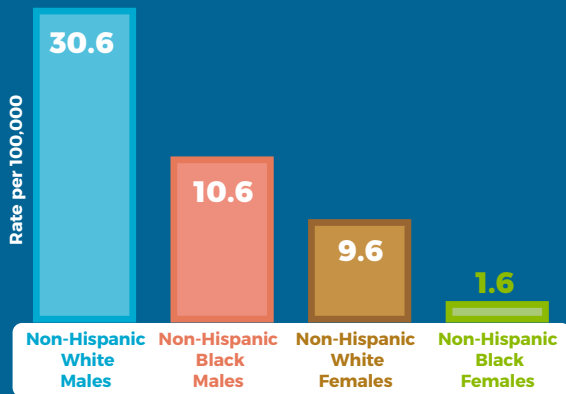


Hospital and ED charges for self-inflicted injuries in 2017 included:

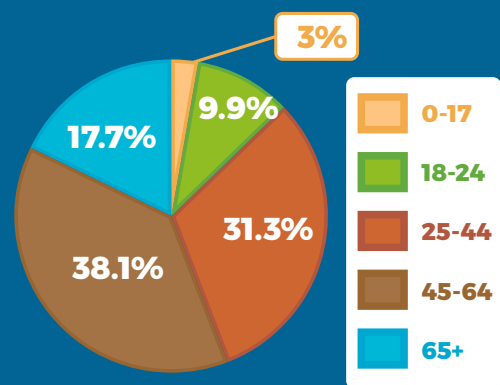
- **\$65.9 million** in Hospital Inpatient charges
- **\$19.5 million** in ED charges.

# SOUTH CAROLINA BY THE NUMBERS

## Suicide by Sex and Race 2013-2017

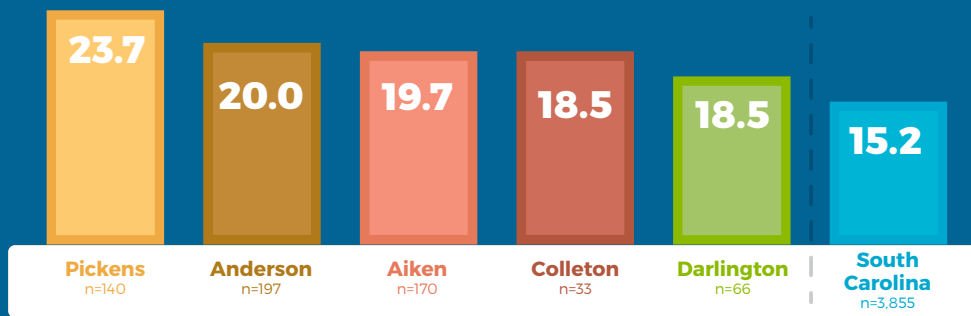


## Suicide by Age 2013-2017

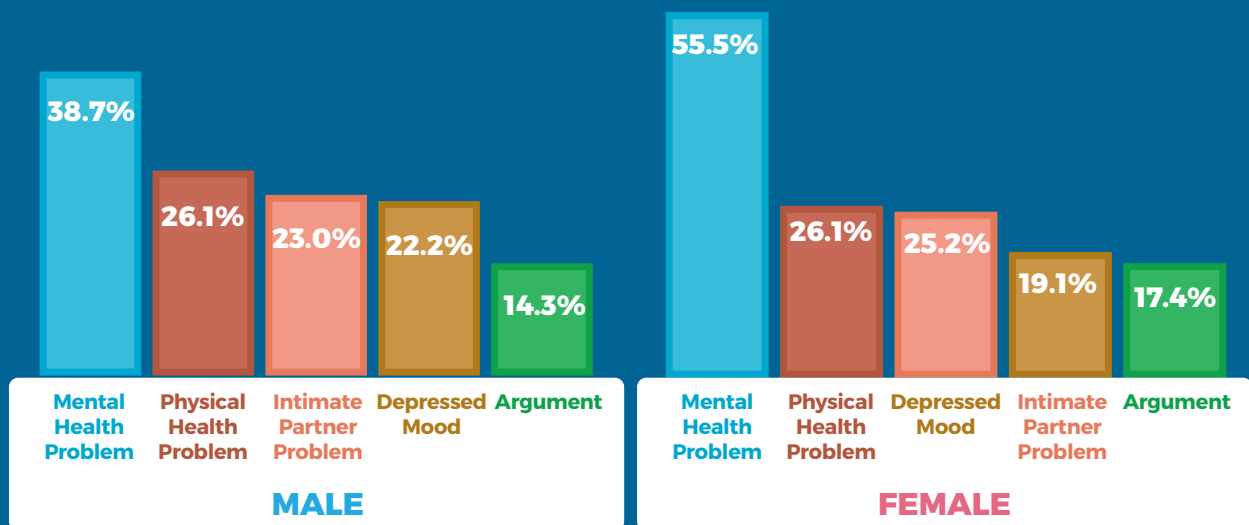


## Counties with Highest Suicide Death Rates (2013-2017)

(Highest combined 5-year Suicide rate per 100,000 population)



## Most Common Circumstances Related to Suicide (2015-2017)



[www.scdhec.gov](http://www.scdhec.gov)

CR-012365 2/20

### Data Sources:

- WISQARS - Web-based Injury Statistics Query and Reporting System
- SCDHEC Vital Records - South Carolina Department of Health and Environmental Control Vital Records
- SCVDRS - South Carolina Violent Death Reporting System
- RFA Hospital Discharge Data - South Carolina Revenue and Fiscal Affairs Office Hospital Discharge Data

