

Status of the Available Safe Yield Across South Carolina's Watersheds





South Carolina Department of Health and
Environmental Control
2600 Bull Street
Columbia, SC 29201

Compiled by: Leigh Anne R. Monroe, Hydrogeologist

Bureau of Water
Dr. James Michael Marcus, Chief

Water Monitoring, Assessment, and Protection Division
Robert Devlin, Director

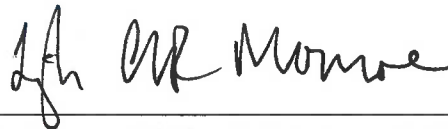
Water Quantity Permitting Section
Alexander Butler, Manager

Technical Document Number:
005-2020

Bureau of Water
January 2020



Status of the Available Safe Yield Across South Carolina's Watersheds



Author and Editor, Leigh Anne R. Monroe



Section Manager, Alexander Butler



Division Director, Robert Devlin

Contents

Definitions.....	1
Background.....	3
Background Intake Information.....	3
Process and Results.....	17
Broad River Basin.....	17
Catawba River Basin.....	22
Edisto River Basin.....	27
Pee Dee River Basin.....	34
Salkehatchie River Basin.....	38
Saluda River Basin.....	41
Santee River Basin.....	46
Savannah River Basin.....	49

Table of Figures

FIGURE 1: TOTAL REGISTERED AND PERMITTED INTAKES IN SOUTH CAROLINA.....	4
FIGURE 2: INTAKE TYPES IN THE BROAD BASIN.....	5
FIGURE 3: INTAKE TYPES IN THE CATAWBA BASIN.....	5
FIGURE 4: INTAKE TYPES IN THE EDISTO BASIN.....	6
FIGURE 5: INTAKE TYPES IN THE PEE DEE BASIN.....	6
FIGURE 6: INTAKE TYPES IN THE SALKEHATCHIE BASIN.....	7
FIGURE 7: INTAKE TYPES IN THE SALUDA BASIN.....	7
FIGURE 8: INTAKE TYPES IN THE SANTEE BASIN.....	8
FIGURE 9: INTAKE TYPES IN THE SAVANNAH BASIN.....	8
FIGURE 10: INTAKE TYPES AND LOCATIONS IN THE BROAD BASIN.....	9
FIGURE 11: INTAKE TYPES AND LOCATIONS IN THE CATAWBA BASIN.....	10
FIGURE 12: INTAKE TYPES AND LOCATIONS IN THE EDISTO BASIN.....	11
FIGURE 13: INTAKE TYPES AND LOCATIONS IN THE PEE DEE BASIN.....	12
FIGURE 14: INTAKE TYPES AND LOCATIONS IN THE SALKEHATCHIE BASIN.....	13
FIGURE 15: INTAKE TYPES AND LOCATIONS IN THE SALUDA BASIN.....	14
FIGURE 16: INTAKE TYPES AND LOCATIONS IN THE SANTEE BASIN.....	15
FIGURE 17: INTAKE TYPES AND LOCATIONS IN THE SAVANNAH BASIN.....	16
FIGURE 18: MAP OF BROAD BASIN WITH INTAKES AND PERCENTAGE OF SAFE YIELD PERMITTED OR REGISTERED .	21
FIGURE 19: MAP OF CATAWBA BASIN WITH INTAKES AND PERCENTAGE OF SAFE YIELD PERMITTED OR REGISTERED	25
FIGURE 20: MAP OF STREAM SEGMENT THAT HAS BEEN PERMITTED OVER THE SAFE YIELD: GILLIES CREEK IN KERSHAW COUNTY.....	26
FIGURE 21: MAP OF EDISTO BASIN WITH INTAKES AND PERCENTAGE OF SAFE YIELD PERMITTED OR REGISTERED .	33

FIGURE 22: PEE DEE BASIN WITH USERS AND PERCENTAGE OF SAFE YIELD ALLOCATED..... 37
FIGURE 23: SALKEHATCHIE BASIN WITH USERS AND PERCENTAGE OF SAFE YIELD ALLOCATED..... 40
FIGURE 24: MAP OF SALUDA BASIN WITH INTAKES AND PERCENTAGE OF SAFE YIELD PERMITTED OR REGISTERED 45
FIGURE 25: MAP OF SANTEE BASIN WITH INTAKES AND PERCENTAGE OF SAFE YIELD PERMITTED OR REGISTERED. 48
FIGURE 26: MAP OF SAVANNAH BASIN WITH INTAKES AND PERCENTAGE OF SAFE YIELD PERMITTED OR REGISTERED
..... 53

Definitions

Adjusted Safe Yield: the safe yield at a point after all upstream withdrawals (except those downstream of a licensed impoundment) are taken out of the calculation

Agriculture Facility: any land, building, structure, pond, impoundment, appurtenance, machinery, or equipment which is used for the commercial production or processing of crops, trees, livestock, animals, poultry, honeybees, honeybee products, livestock products, poultry products, or products which are used in commercial aquaculture

Existing Surface Water Withdrawer: a surface water withdrawer withdrawing surface water as of January 1, 2011, or a proposed surface water withdrawer with its intakes under construction before January 2, 2011, or with all necessary applications for its intake permits deemed administratively complete before January 1, 2011

Mean Annual Daily Flow (MADF): the arithmetic mean of individual daily mean discharges (stream flow) for a period representative of the historic stream flow records, using flow measurements published by USGS or as determined by other Department approved, hydrologically valid data

Minimum Instream Flow: the flow that provides an adequate supply of water at the surface water withdrawal point to maintain the biological, chemical, and physical integrity of the stream taking into account the needs of the downstream users, recreation, and navigation and that flow is set at forty (40) percent of the mean annual daily flow for the months of January, February, March, and April; thirty (30) percent of the mean annual daily flow for the months of May, June, and December; and twenty (20) percent of the mean annual daily flow for the months of July through November for surface water withdrawers as described in Section 49-4-150(A)(1) of R.61-119. For surface water withdrawal points located on a surface water segment downstream of an influenced by a licensed or otherwise flow controlled impoundment, 'minimum instream flow' means the flow that provides an adequate supply of water at the surface water withdrawal point to maintain the biological, chemical, and physical integrity of the stream taking into account the needs of downstream users, recreation, and navigation and that flow is set in Section 49-4-150(A)(3) of R.61-119.

New Surface Water Withdrawal: those withdrawers that apply after the January 1, 2011 deadline for any use

Permittee: a person authorized to make withdrawals of surface water pursuant to a surface water withdrawal permit issued by the Department, not including agricultural withdrawals

Registered Surface Water Withdrawer: a person who makes surface water withdrawals for agricultural uses at an agricultural facility that is filing a report pursuant to Section 49-4-50

Safe Yield: the amount of water available for withdrawal from a particular surface water source in excess of the minimum instream flow or minimum water level for that surface water source. Safe yield is determined by comparing the natural and artificial replenishment of the surface water to the existing or planned consumptive and non-consumptive uses; per R. 61-119, the safe yield at the point of withdrawal will be evaluated as follows:

“(A) For withdrawals in a stream segment not influenced by a licensed or otherwise flow controlled impoundment, the safe yield is calculated as the difference between the mean annual daily flow and twenty (20) percent of mean annual daily flow at the withdrawal point, taking into consideration natural and artificial replenishment of the surface water and affected downstream withdrawals.”

Surface Water Withdrawer: a person withdrawing surface water in excess of three million (3,000,000) gallons during any one (1) month from a single intake or multiple intakes under common ownership within a one (1) mile radius from any one (1) existing or proposed intake

Background

The Surface Water Withdrawal, Permitting and Reporting Act (R.61-119) charges the Department of Health and Environmental Control (DHEC) with permitting surface water withdrawals over three (3) million gallons a month (MGM). Surface water withdrawers are categorized in three ways: existing, new, and registrations.

“Existing surface water withdrawer” is a surface water withdrawer withdrawing surface water as of January 1, 2011, or a proposed surface water withdrawer with its intakes under construction before January 1, 2011, or with all necessary applications for its intake permits deemed administratively complete before January 1, 2011. These users were able to apply for a permitted quantity of water based on the greatest of the following: documented historical water use, current permitted treatment capacity, design capacity of the intake structure as of January 1, 2011, design capacity of a pending intake structure permit application deemed administratively complete as of January 1, 2011, an amount necessary to recover, through the sale of water, indebtedness from an outstanding bond or revenue certificate issued prior to January 1, 2011, and for a publicly owned water utility, the safe yield of the utility’s existing or permitted water supply only reservoir. Existing permits were permitted from 30 to 50 years.

“New” surface water withdrawals are those withdrawers that apply after the January 1, 2011 deadline for any use that is not agricultural. These new withdrawals are subject to reasonable use criteria, which includes safe yield calculations (the difference between the mean annual daily flow (MADF) and twenty (20) percent of MADF at the withdrawal point, taking into consideration natural and artificial replenishment of the surface water and affected downstream withdrawals) and the 20%, 30%, and 40% minimum instream flows at the point of withdrawal. These have permit durations from 20 to 50 years.

“Registrations” or registered surface water withdrawals are agricultural users, who are subject to safe yield calculations at the point of withdrawal, but not 20%, 30%, 40% minimum instream flows. Registrations do not expire. Each type of withdrawer is required to submit water use annually to DHEC.

Background Intake Information

There are currently 463 active permitted and registered surface water intakes from 306 registrations and permits across the state. There are 204 registered intakes (199 agricultural irrigation intakes and five aquaculture intakes) and 259 permitted intakes. The majority of the permitted intakes are golf courses (94) followed by water supply intakes (88). The majority of registered intakes are agricultural intakes (199). There are 40 active hydroelectric power plant intakes across the state, but these are not permitted or registered, these only report water use. The full breakdown of intake type for each basin (without hydroelectric power) can be seen in Table 1, and in Figures 1-9. The maps following these figures show where the intakes are in each basin.

Table 1: Total count of intake type by basin

Basin	Agricultural	Aquaculture	Golf Course	Industrial	Mining	Nuclear Power	Thermoelectric Power	Water Supply	Total
Broad	6	0	11	4	2	2	0	23	48
Catawba	21	0	5	4	2	3	1	8	44
Edisto	81	2	2	1	0	0	3	7	96
Pee Dee	27	0	36	11	3	2	3	7	89
Salkehatchie	20	1	7	0	0	0	0	0	28
Saluda	29	2	14	3	2	0	2	18	70
Santee	6	0	1	5	1	0	8	5	26
Savannah	9	0	18	10	1	2	2	20	62
Total	199	5	94	38	11	9	19	88	463

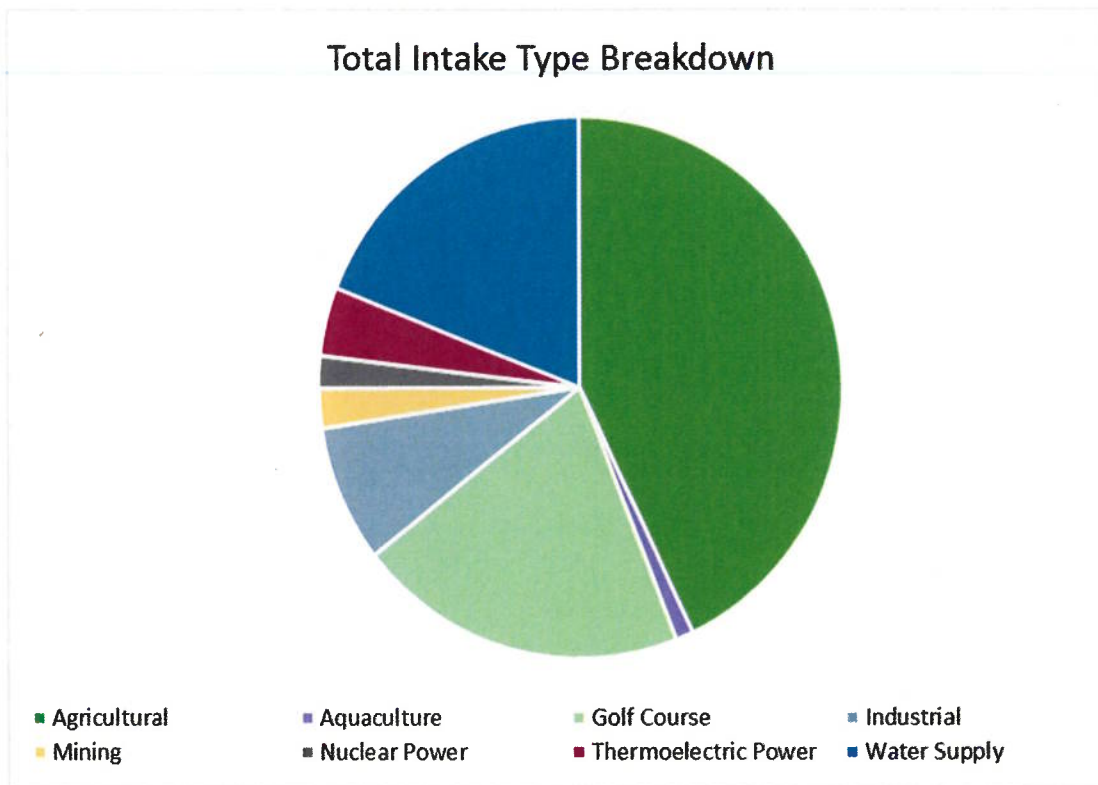


Figure 1: Total registered and permitted intakes in South Carolina.

Broad Basin Intake Types

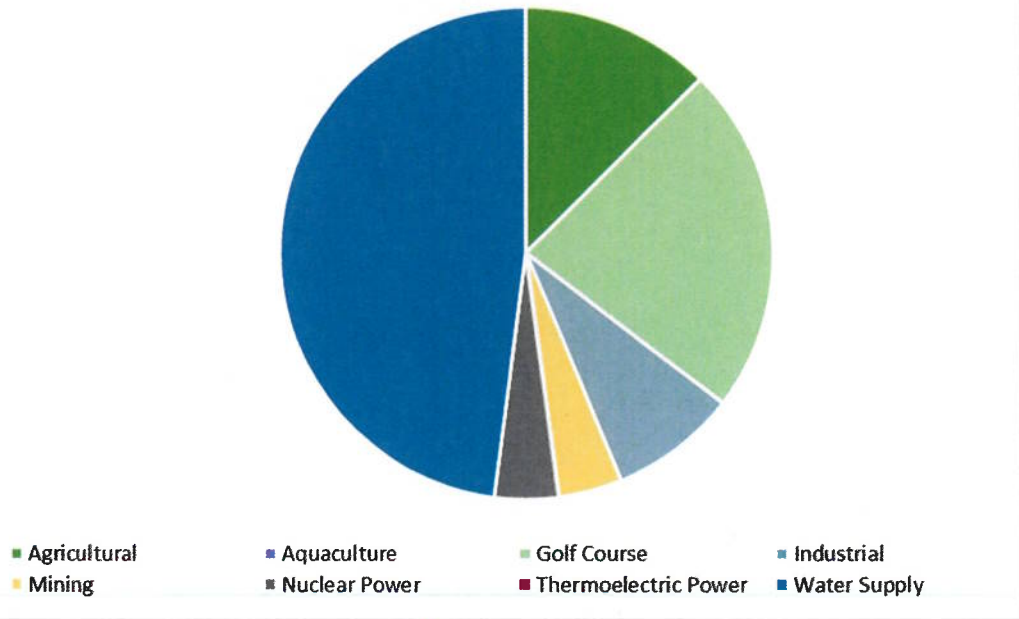


Figure 2: Intake types in the Broad Basin

Catawba Basin Intake Types

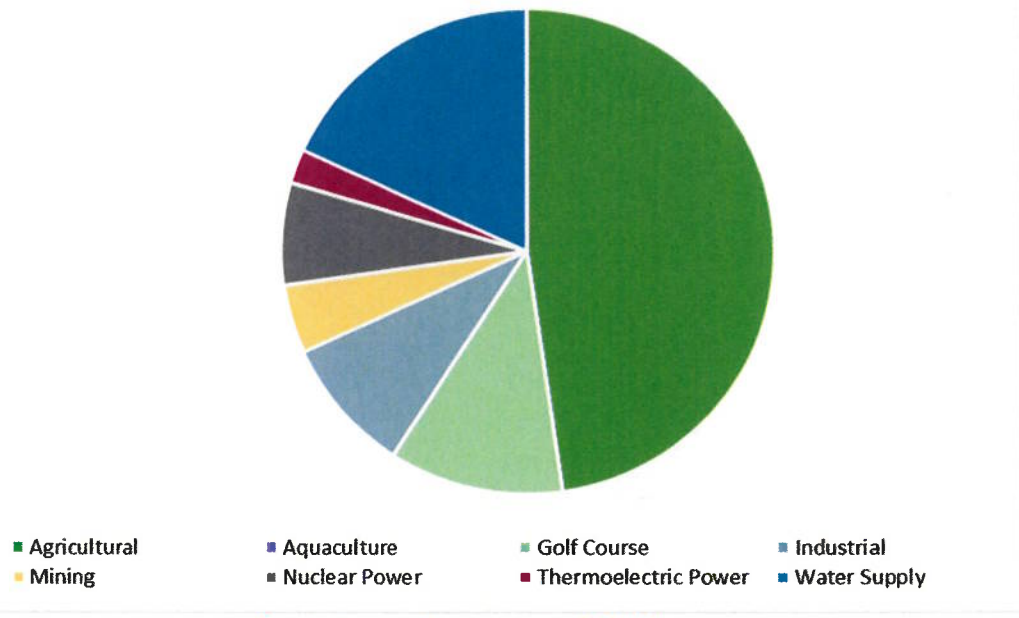


Figure 3: Intake types in the Catawba Basin

Edisto Basin Intake Types

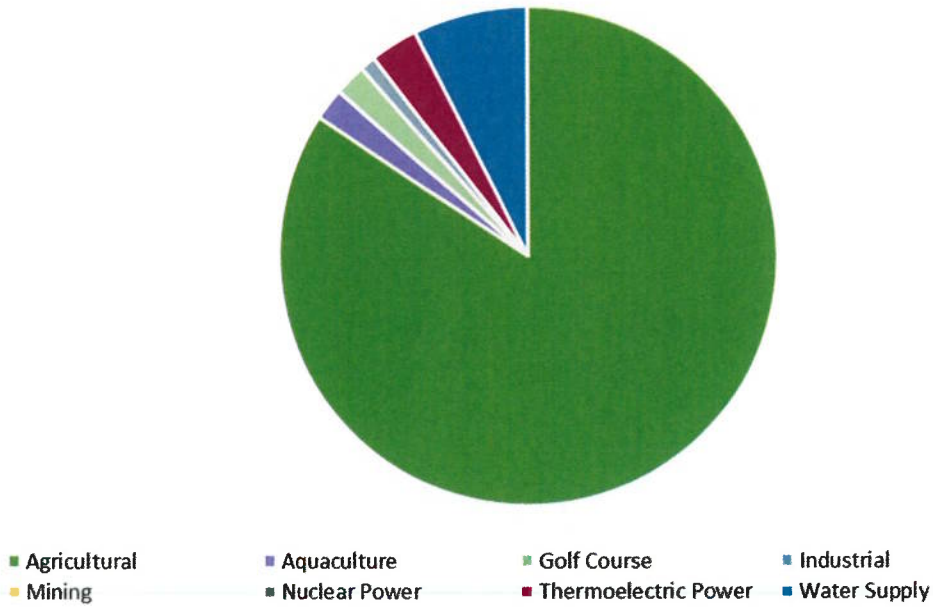


Figure 4: Intake types in the Edisto Basin

Pee Dee Basin Intake Types

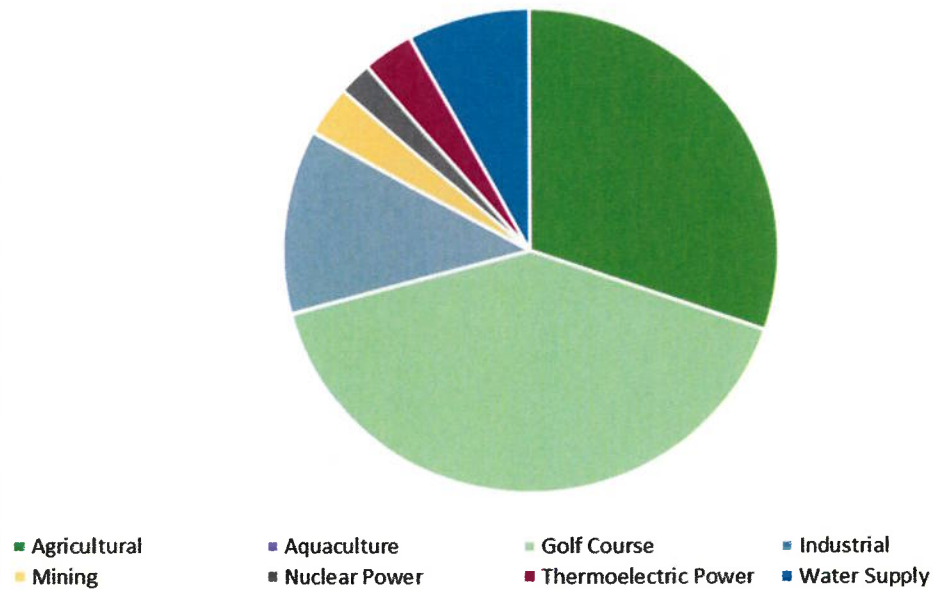


Figure 5: Intake types in the Pee Dee Basin

Salkehatchie Basin Intake Types

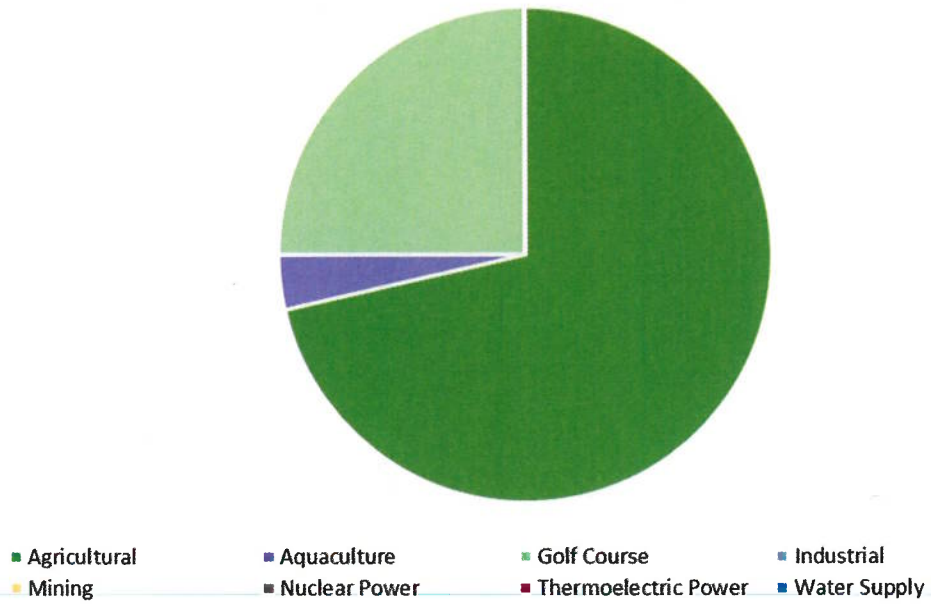


Figure 6: Intake types in the Salkehatchie Basin

Saluda Basin Intake Types

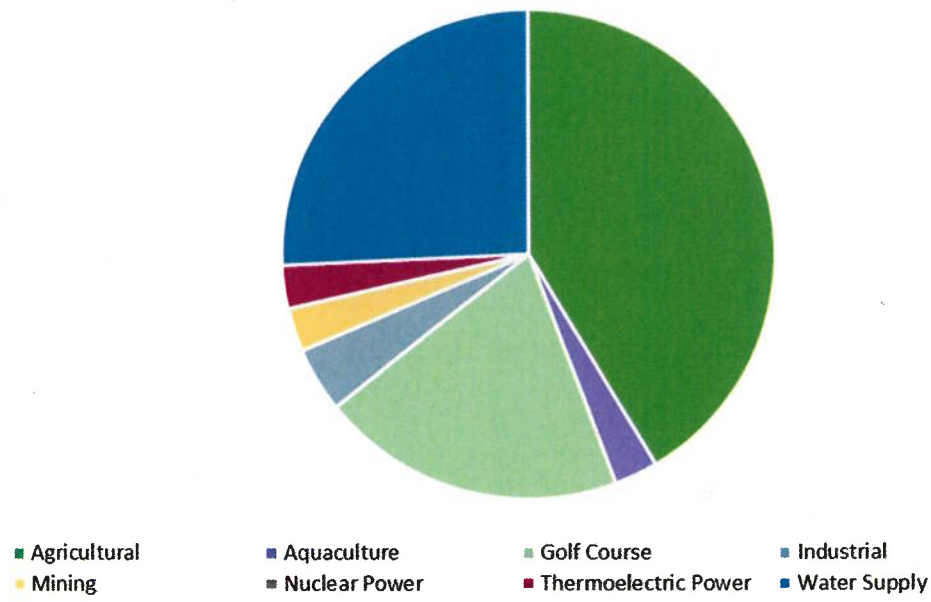


Figure 7: Intake types in the Saluda Basin

Santee Basin Intake Types

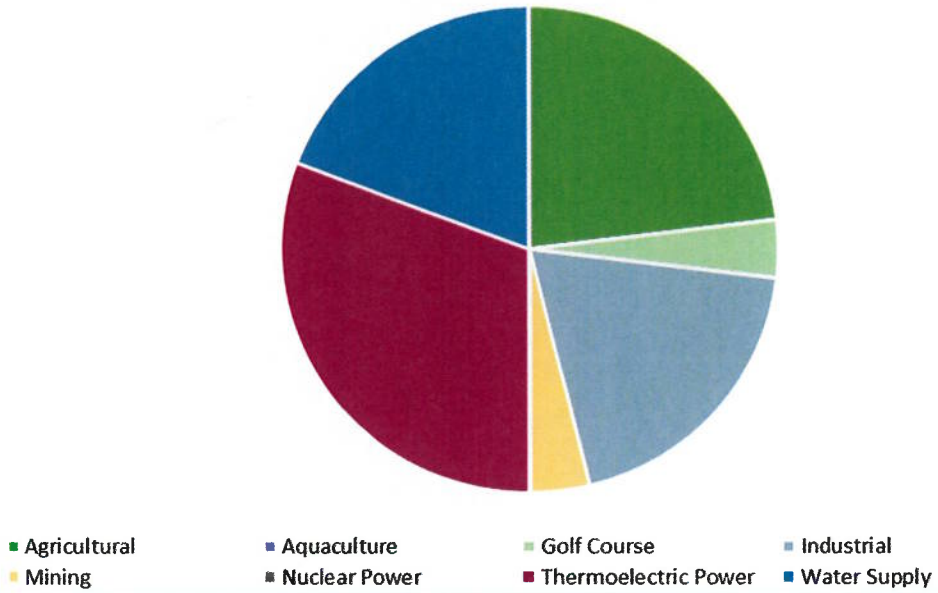


Figure 8: Intake types in the Santee Basin

Savannah Basin Intake Types

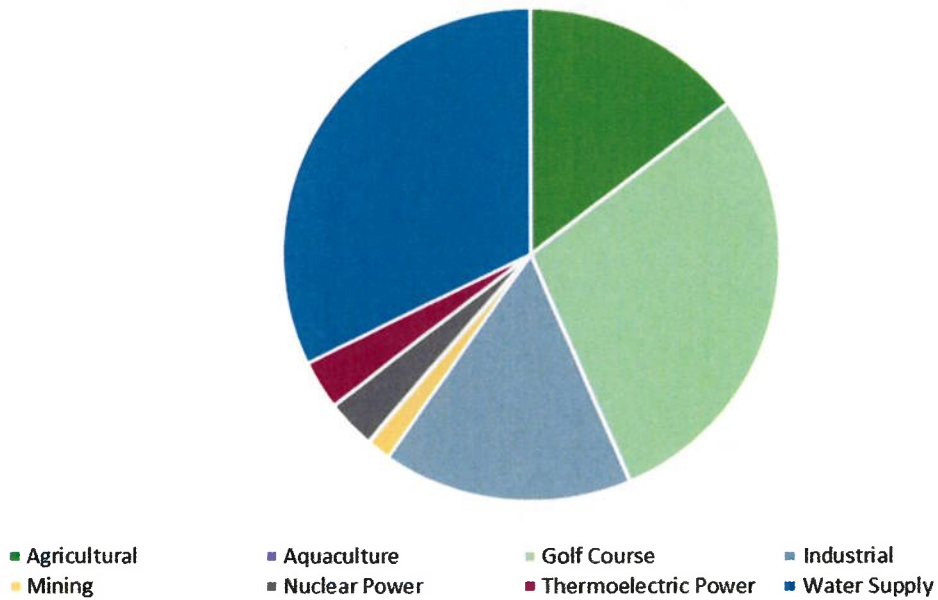


Figure 9: Intake types in the Savannah Basin

Broad Basin Intake Locations and Type Use

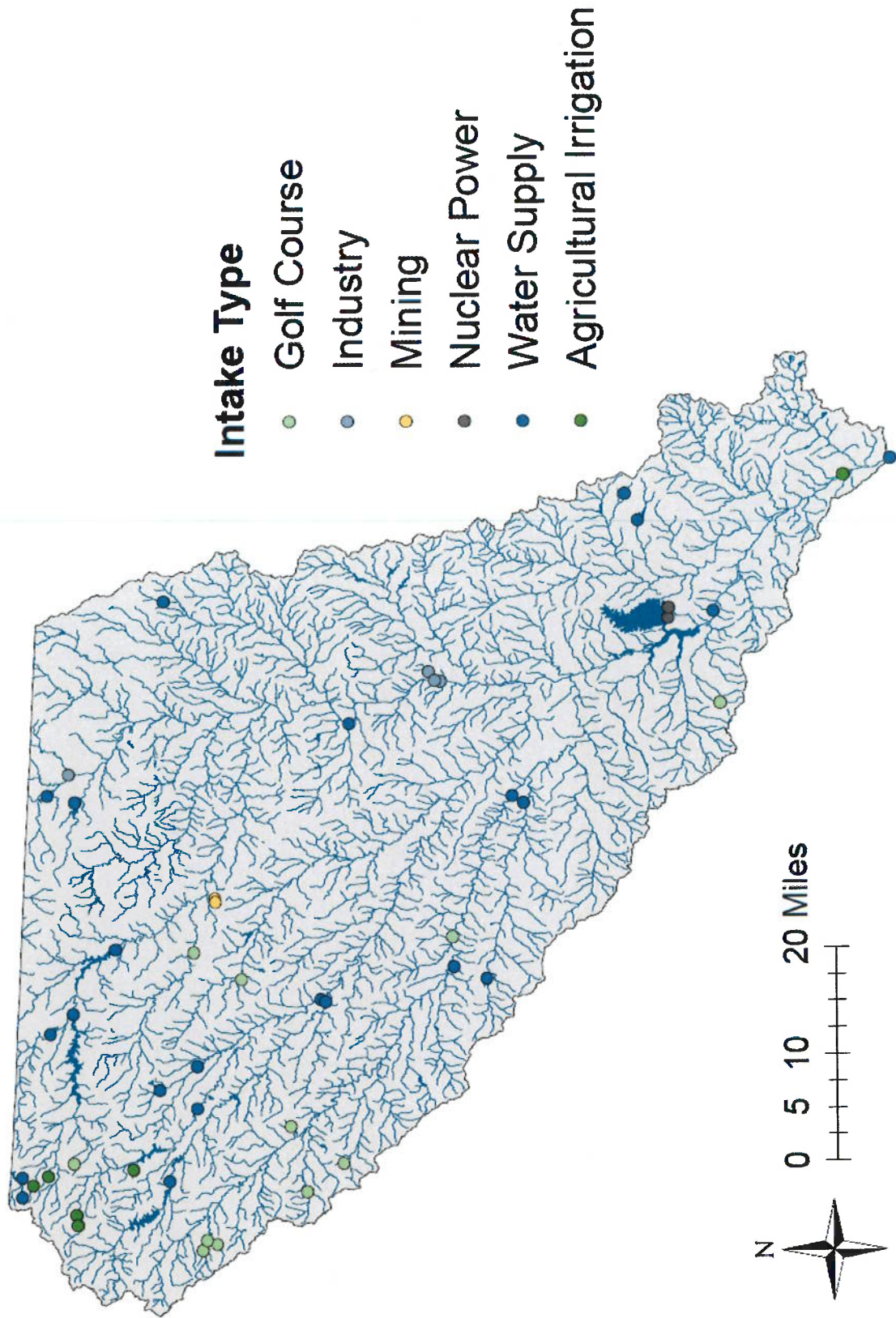


Figure 10: Intake types and locations in the Broad Basin

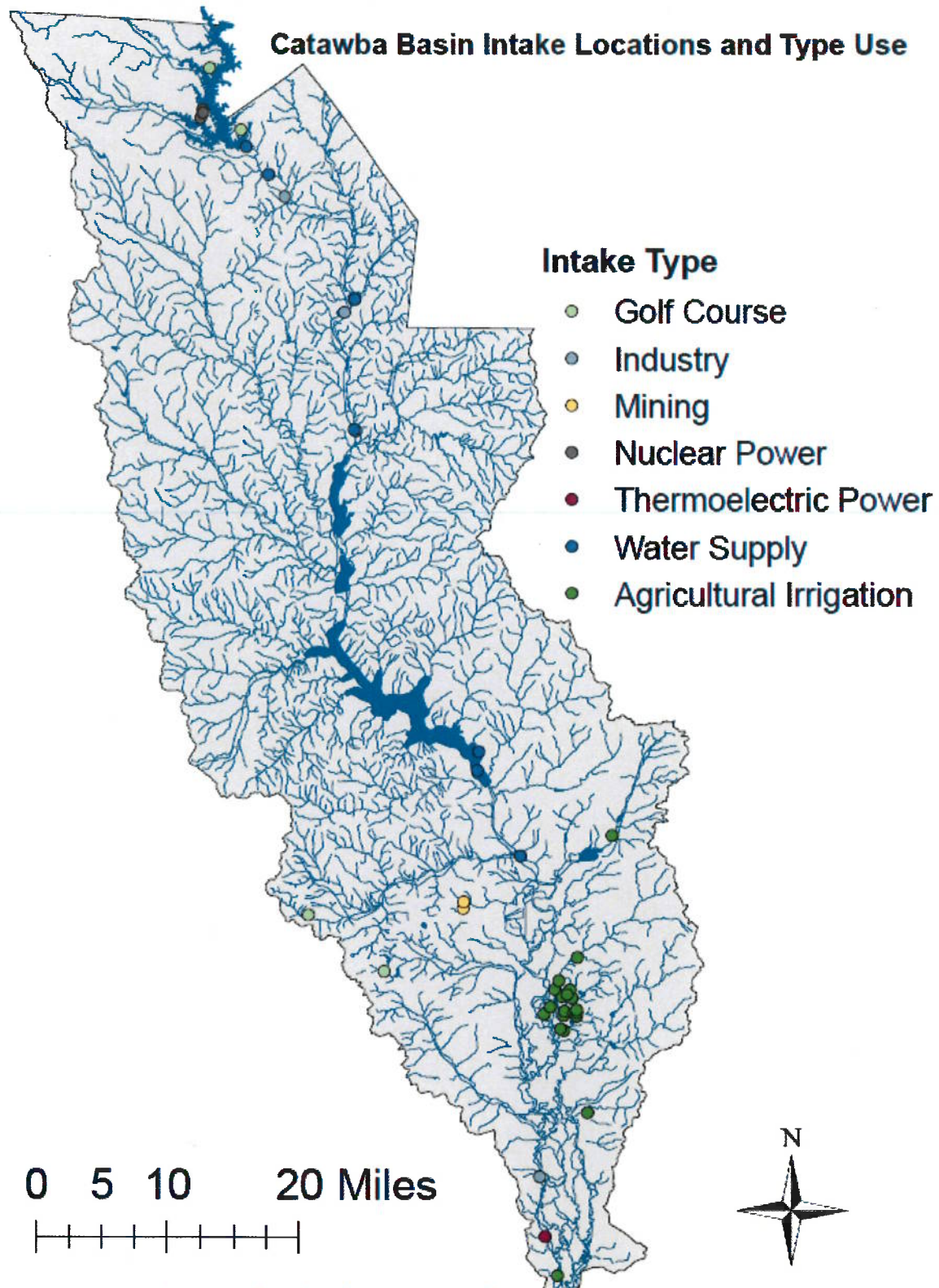


Figure 11: Intake types and locations in the Catawba Basin

Edisto Basin Intake Locations and Type Use

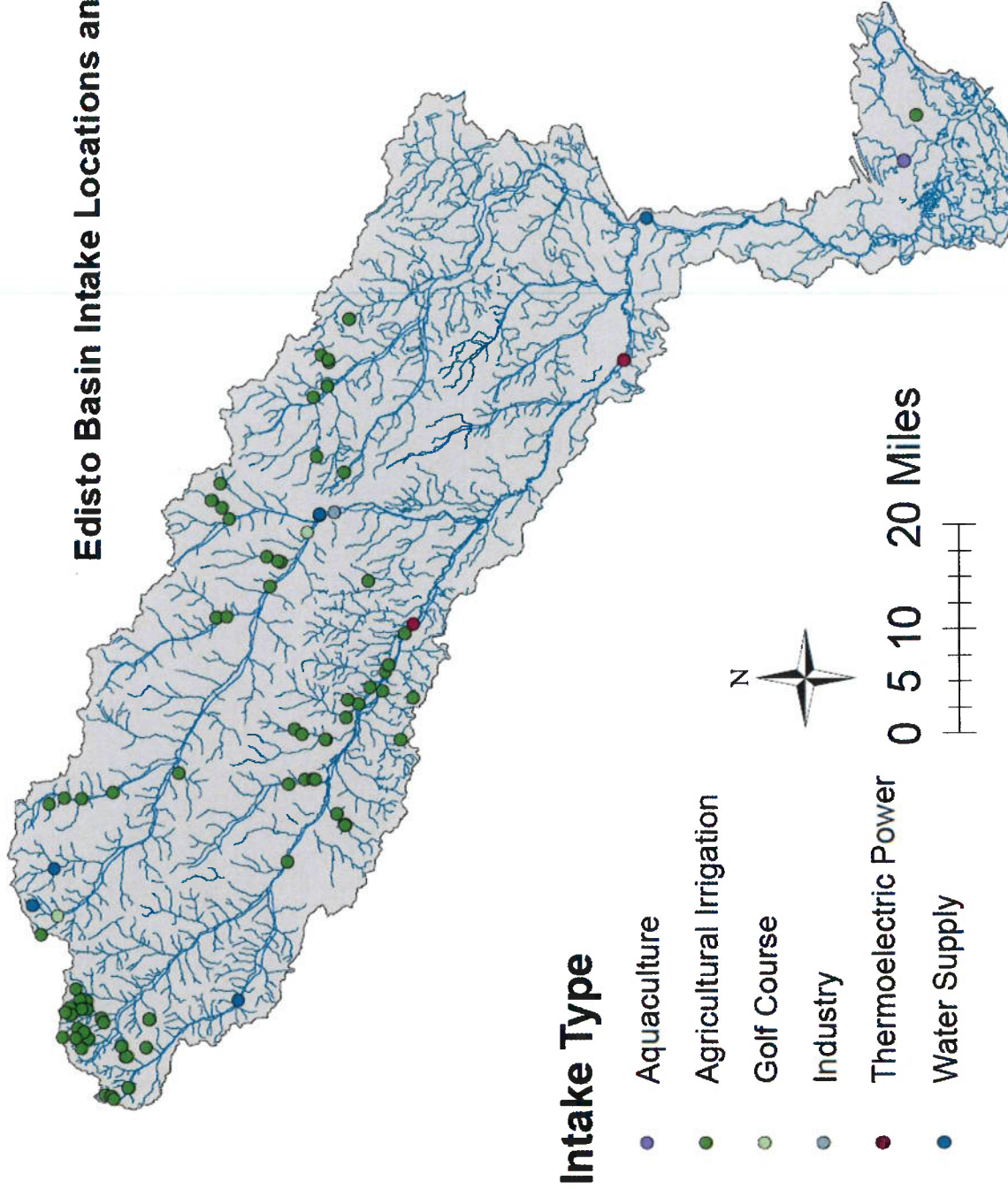


Figure 12: Intake types and locations in the Edisto Basin

Pee Dee Basin Intake Locations and Type Use

Intake Type

- Agricultural Irrigation
- Golf Course
- Industry
- Mining
- Nuclear Power
- Thermoelectric Power
- Water Supply

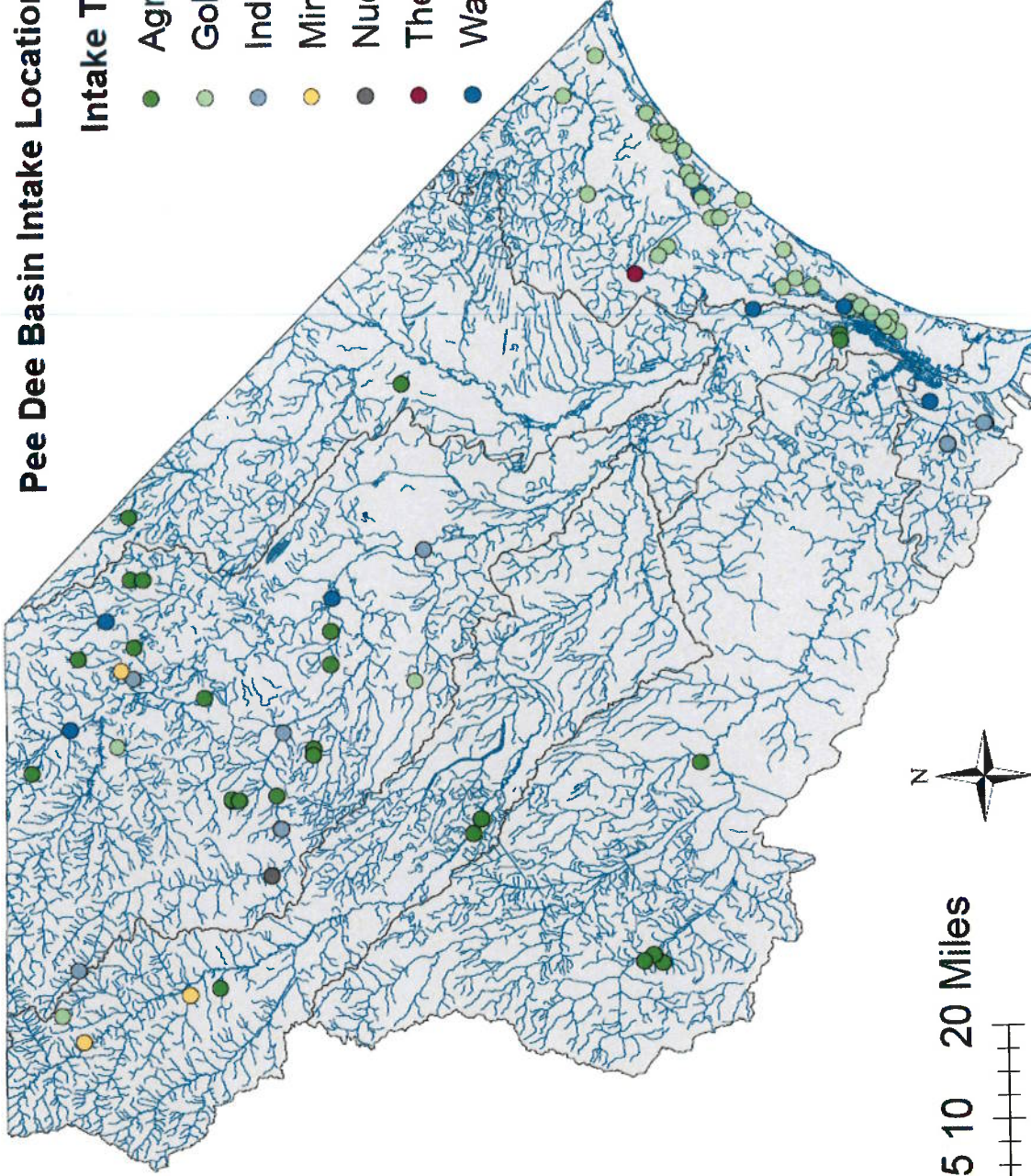


Figure 13: Intake types and locations in the Pee Dee Basin

Salkehatchie Basin Intake Locations and Type Use

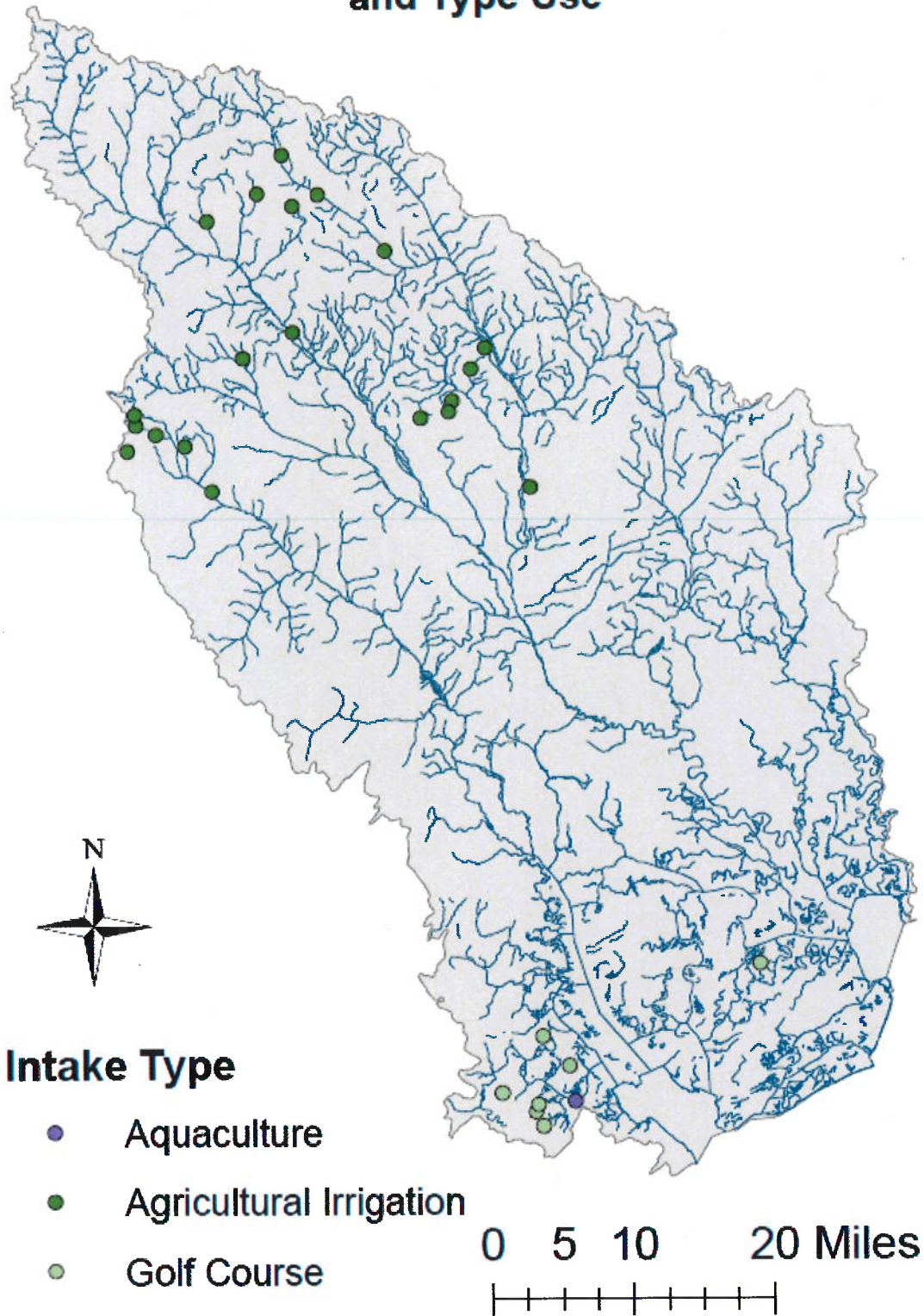


Figure 14: Intake types and locations in the Salkehatchie Basin

Saluda Basin Intake Locations and Type Use

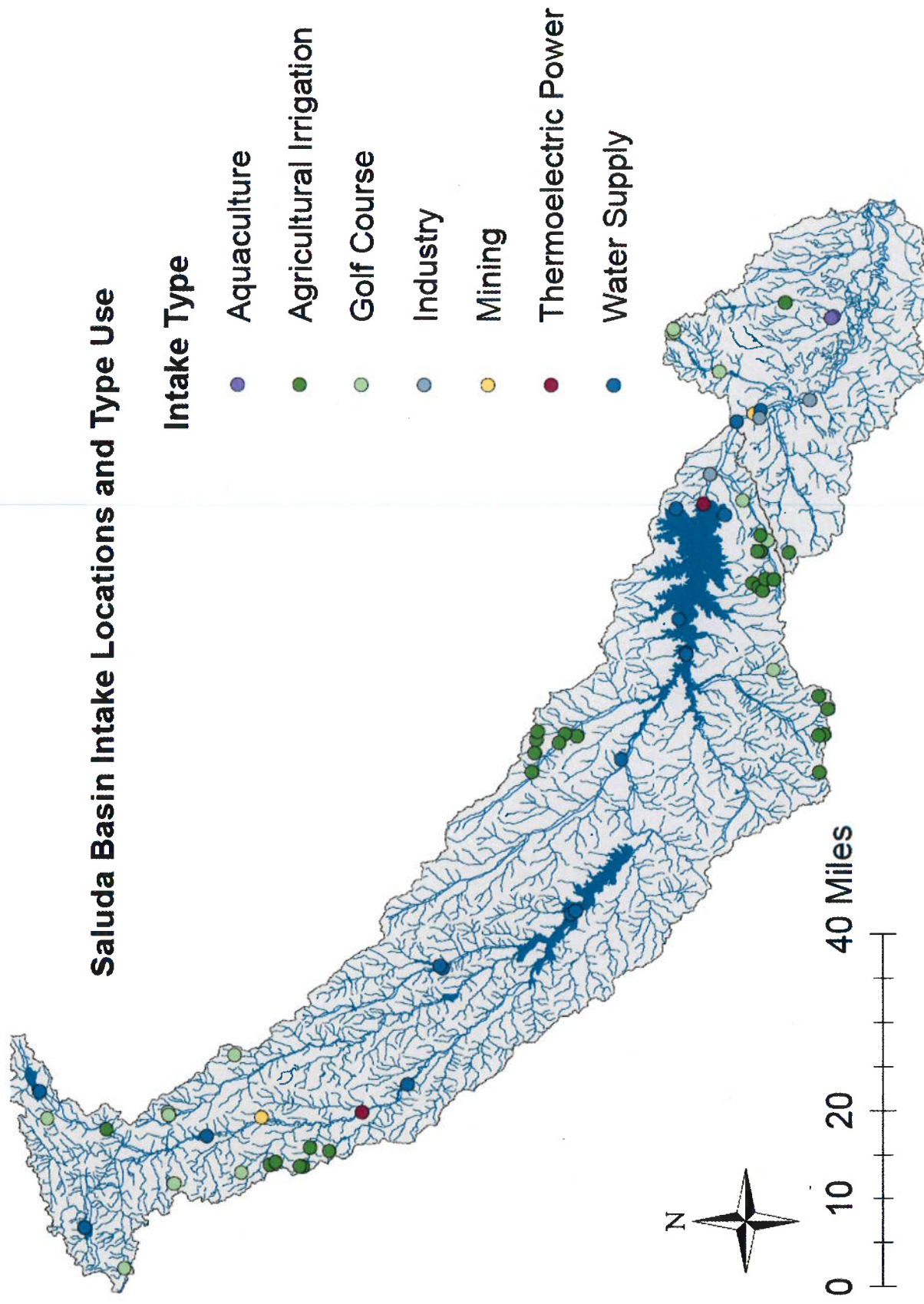


Figure 15: Intake types and locations in the Saluda Basin

Santee Basin Intake Locations and Type Use

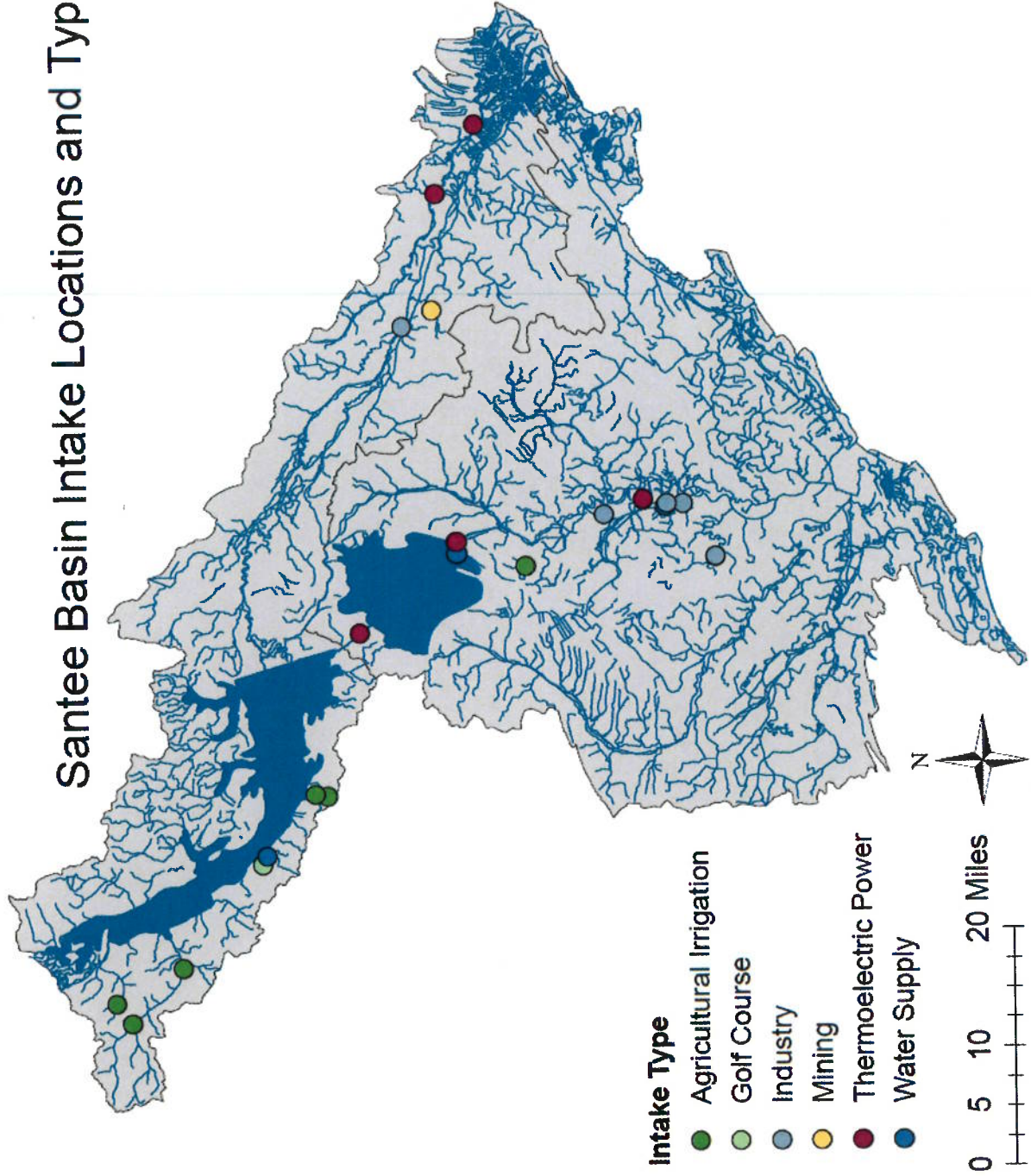


Figure 16: Intake types and locations in the Santee Basin

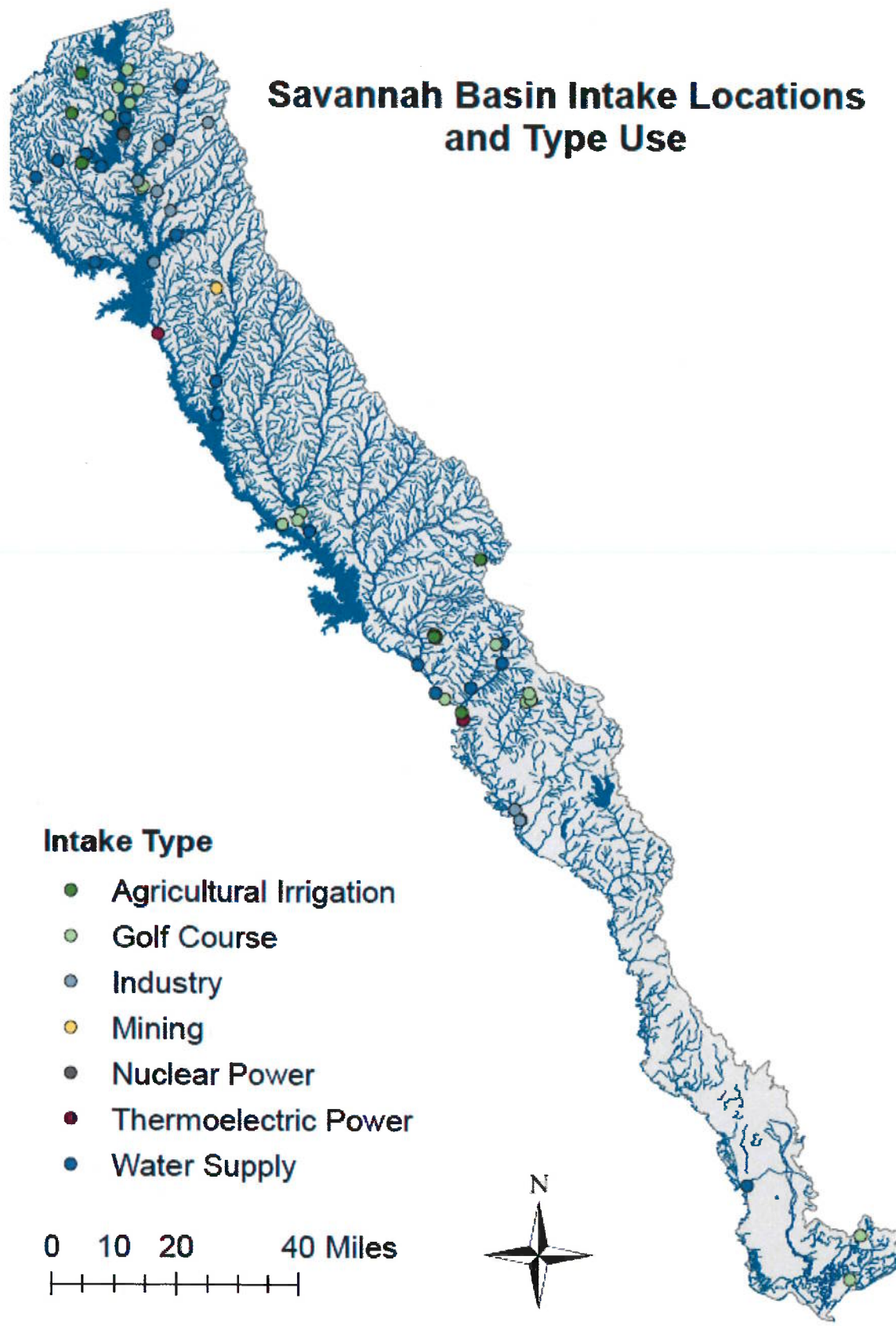


Figure 17: Intake types and locations in the Savannah Basin

Process and Results

Section (E)(3)(a)(viii) of R.61-119, Surface Water Withdrawal, Permitting, Use and Reporting, dictates that any stretch of river or tributary that is permitted at or beyond the safe yield at that point in the river, the public should be notified so no new withdrawals can be approved at that point in the river or along the stretch of river above it. In early 2019, a review of the eight defined watersheds in South Carolina commenced to determine if there were any reaches that were considered “over-allocated”. The Simplified Water Allocation Model (SWAM), developed by DHEC, SC Department of Natural Resource (DNR), and CDM Smith, was utilized to determine instream flows at each active withdrawal, calculate the safe yield at each point, calculate the adjusted safe yield, and determine if any stretch of river had been fully permitted.

Broad River Basin

As a result of the review process of the Broad River Basin, no stretch of river was found to be fully allocated as a result of withdrawals. Tables 2 and 3 list users within the Broad Basin, along with respective safe yields, adjusted safe yields, and the percentage of safe yield that has been permitted or registered.

Table 2: Broad Intakes with Safe Yield and Percentage of Safe Yield Allocated all in MGM¹

Facility ²	UserID	N, E, or R ³	Permit Limit (MGM)	Safe Yield (MGM) ⁴	Adjusted Safe Yield (MGM)	Percentage of Safe Yield Allocated
Milliken	11IN002	E	232	33,185.01	232.00	0.70%
Gaffney	11WS001	E	620	-	-	-
Gaffney	11WS001	E	651	-	-	-
Chemtrade	12IN002	E	15.624	56,147.64	765.02	1.36%
Chemtrade	12IN002	E	6.696	-	-	-
V.C. Summer	20PN001	E	49.1	-	-	-
V.C. Summer	20PN001	E	26,194.76	-	-	-
Winnsboro	20WS001	E	310	-	-	-
Winnsboro	20WS001	E	124	20.67	12.07	58.38%
Winnsboro	20WS001	E	62	106.20	0.39	0.37%
Fox Run CC	23GC003	E	19	85.07	19.00	22.33%
Holly Tree	23GC009	E	6.25	235.58	6.25	2.65%
Pebble Creek	23GC011	E	35.7	284.69	89.27	31.36%
Pebble Creek	23GC011	E	53.57	-	-	-
Pebble Creek	23GC011	E	35.7	284.69	89.27	31.36%
Fisher Bros	23IR002	R	220	-	-	-
Hyder Austin	23IR007	R	5.92	-	-	-
Hyder Austin	23IR007	R	7.494	-	-	-
Hyder Austin	23IR007	R	3.801	-	-	-
Hyder Austin	23IR007	R	4.642	-	-	-

¹ Does not include inactive intakes included in the model, or intakes that are newer than the model

² Duplicate facility names indicate additional intakes at that facility.

³ N: New, E: Existing, R: Registration

⁴ -'s indicate intakes on reservoirs, that have a separate safe yield associated with each one

Facility ²	UserID	N, E, or R ³	Permit Limit (MGM)	Safe Yield (MGM) ⁴	Adjusted Safe Yield (MGM)	Percentage of Safe Yield Allocated
Greer	23WS004	E	1,682.86	-	-	-
Musgrove Mill	30GC003	E	24.55	6,833.83	449.07	6.57%
Clinton	30WS001	E	310	6,670.48	424.52	6.36%
Clinton	30WS001	E	105	-	-	-
Mid Carolina	36GC050	E	32.364	-	-	-
Whitmire	36WS003	E	68.2	7,721.99	517.27	6.70%
Whitmire	36WS003	E	31	2,186.81	31.00	1.42%
Walden Farm	40IR059	R	27	90,509.16	399.00	0.44%
Columbia	40WS054	E	3,875	91,647.64	4,274.00	4.66%
CC of Spartanburg	42GC005	E	71.4	1908.30	71.40	3.74%
Carolina CC	42GC010	E	49.1	-	-	-
Willow Creek	42GC013	E	33.48	-	-	-
Links O'Tryon	42GC015	E	11.83	-	-	-
Vulcan	42MI001	E	59.5	-	-	-
Vulcan	42MI001	E	59.4	-	-	-
ICWD	42WS001	E	248	2,767.94	247.98	8.96%
Spartanburg	42WS004	E	2790	-	-	-
Woodruff-Roebuck	42WS005	E	279	3,156.89	816.90	25.88%
Woodruff-Roebuck	42WS005	E	279	3,833.55	338.80	8.84%
Landrum	42WS008	E	4.65	193.34	39.06	20.20%
Landrum	42WS008	E	34.41	193.34	4.65	2.41%
SJWD	42WS012	E	713	1,674.83	713.00	42.57%
SJWD	42WS012	E	434	-	-	-
SJWD	42WS012	E	620	-	-	-
Spartanburg	42WS014	E	5673	4,199.29	5,698.25	-
Carlisle Finishing	44IN003	E	178.56	56,167.22	943.58	1.68%
Union	44WS001	E	446	55,150.19	749.40	1.36%
York	46WS002	E	93	-	-	-

Table 3: Broad Intakes with Safe Yield and Percentage of Safe Yield Allocated all in cubic feet per second (CFS)

Facility	UserID	N, E, or R	Permit Limit (CFS)	Safe Yield (CFS)	Adjusted Safe Yield (CFS)	Percentage of Safe Yield Allocated
Milliken	11IN002		11.80	1,688.05	11.80	0.70%
Gaffney	11WS001		31.54	-	-	-
Gaffney	11WS001		33.11	-	-	-
Chemtrade	12IN002		0.79	2,856.11	38.92	1.36%
Chemtrade	12IN002		0.34	-	-	-
V.C. Summer	20PN001		2.50	-	-	-
V.C. Summer	20PN001		1,332.47	-	-	-
Winnsboro	20WS001		15.77	-	-	-
Winnsboro	20WS001		6.31	1.05	0.61	58.38%
Winnsboro	20WS001		3.15	5.40	0.02	0.37%
Fox Run CC	23GC003		0.97	4.33	0.97	22.33%
Holly Tree	23GC009		0.32	11.98	0.32	2.65%
Pebble Creek	23GC011		1.82	14.48	4.54	31.36%
Pebble Creek	23GC011		1.82	-	-	-
Pebble Creek	23GC011		2.72	14.48	4.54	31.36%
Fisher Bros	23IR002		11.19	-	-	-
Hyder Austin	23IR007		0.30	-	-	-
Hyder Austin	23IR007		0.38	-	-	-
Hyder Austin	23IR007		0.19	-	-	-
Hyder Austin	23IR007		0.24	-	-	-
Greer	23WS004		85.60	-	-	-
Musgrove Mill	30GC003		1.25	347.62	22.84	6.57%
Clinton	30WS001		15.77	339.31	21.59	6.36%
Clinton	30WS001		5.34	-	-	-
Mid Carolina	36GC050		1.65	-	-	-
Whitmire	36WS003		3.47	392.80	26.31	6.70%
Whitmire	36WS003		1.58	111.24	1.58	1.42%
Walden Farm	40IR059		1.37	4,604.00	20.30	0.44%
Columbia	40WS054		197.11	4,661.91	217.41	4.66%
CC of Spartanburg	42GC005		3.63	97.07	3.63	3.74%
Carolina CC	42GC010		2.50	-	-	-
Willow Creek	42GC013		1.70	-	-	-
Links O'Tryon	42GC015		0.60	-	-	-
Vulcan	42MI001		3.03	-	-	-
Vulcan	42MI001		3.02	-	-	-
ICWD	42WS001		12.62	140.80	12.61	8.96%
Spartanburg	42WS004		141.92	-	-	-

Facility	UserID	N, E, or R	Permit Limit (CFS)	Safe Yield (CFS)	Adjusted Safe Yield (CFS)	Percentage of Safe Yield Allocated
Woodruff-Roebuck	42WS005		14.19	160.58	41.55	25.88%
Woodruff-Roebuck	42WS005		14.19	195.00	17.23	8.84%
Landrum	42WS008		0.24	9.83	1.99	20.20%
Landrum	42WS008		1.75	9.83	0.24	2.41%
SJWD	42WS012		36.27	85.20	36.27	42.57%
SJWD	42WS012		22.08	-	-	-
SJWD	42WS012		31.54	-	-	-
Spartanburg	42WS014		288.57	-	-	-
Carlisle Finishing	44IN003		9.08	2,857.10	48.00	1.68%
Union	44WS001		22.69	2,805.37	38.12	1.36%
York	46WS002		4.73	-	-	-

The following figure is a map of the Broad Basin, indicating where users are located across the basin.

Broad Basin Users' Cumulative Percentage of Safe Yield

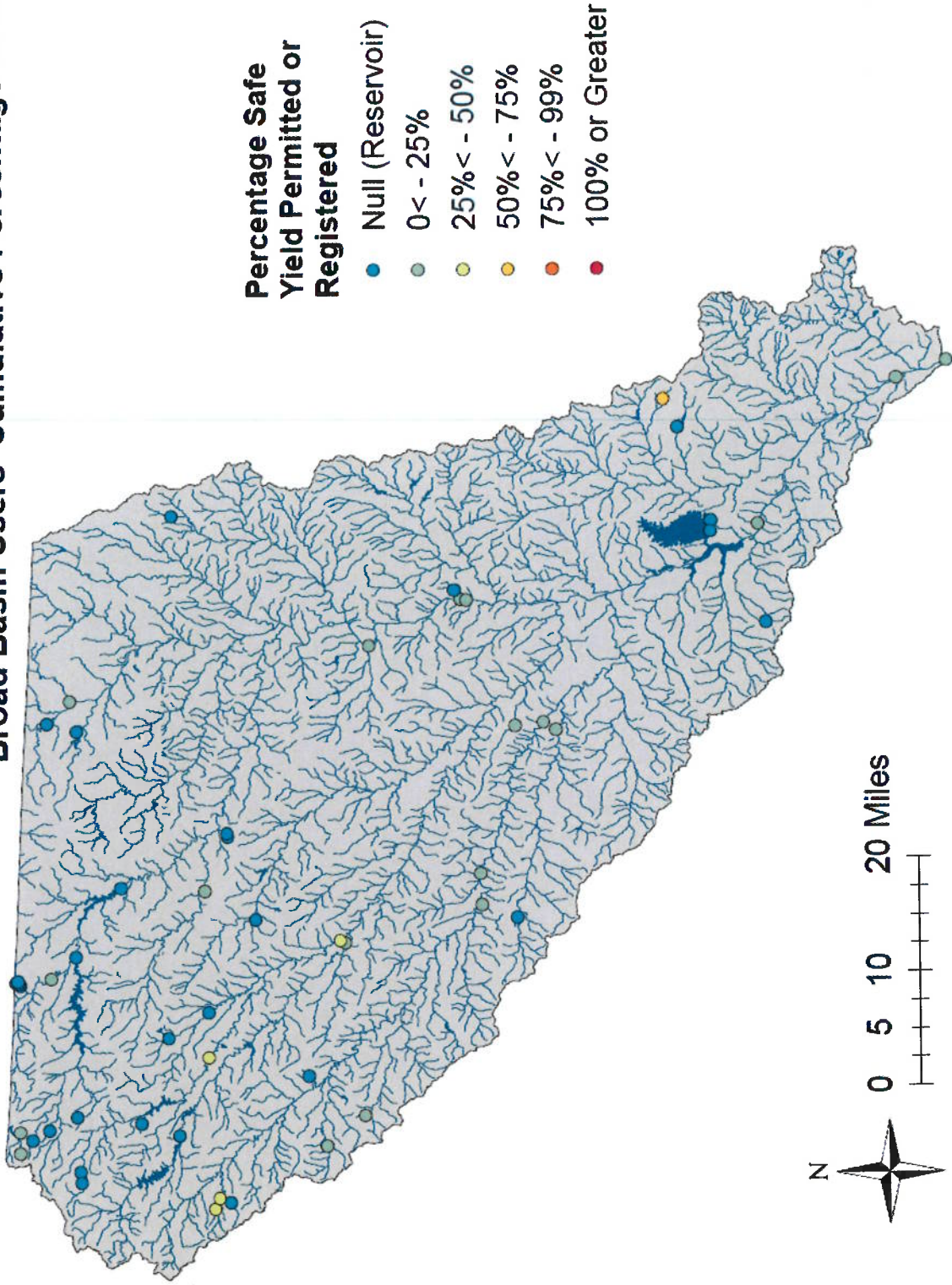


Figure 18: Map of Broad Basin with Intakes and Percentage of Safe Yield Permitted or Registered

Catawba River Basin

As a result of the review process of the Catawba River Basin, one stretch of river or stream was found to be fully allocated. This occurred along Gillies Creek in Kershaw County. The user is 28IN002, Unimin Corporation (now known as Covia). Their intake is permitted for 68 MGM, which translates to using 111% of the safe yield at that point. This user was considered an existing user in the surface water withdrawal program. The stream segment is 1.13 river miles from its beginning to intake, and the segment is permitted out to the confluence, for a total of 1.73 river miles. Tables 4 and 5 list users within the Catawba Basin, along with respective safe yields, adjusted safe yields, and the percentage of safe yield that has been permitted or registered.

Table 4: Catawba Intakes with Safe Yield and Percentage of Safe Yield Allocated all in MGM

UserID	Facility	N, E, or R	Permit Limit (MGM)	Safe Yield (MGM)	Adjusted Safe Yield (MGM)	Percentage of Safe Yield Allocated
46PN001	Catawba Station	E	3,732	-	-	-
46PN001	Catawba Station	E	5,290	-	-	-
46PN001	Catawba Station	E	134	-	-	-
46GC004	River Hills CC	E	80.4	-	-	-
46GC002	Tega Cay Golf Club	E	14.2	-	-	-
46WS003	Rock Hill	E	1,860	-	-	-
46WS003	Rock Hill	E	496.0	56,122.5	54,570.39	0.90%
46IN002	Nation Ford	E	133.9	56,157.4	54,470.73	1.14%
29WS005	LCW&SD	E	1,550.0	69,577.4	66,088.27	3.19%
29WS005	LCW&SD	E	1,550.0	69,602.2	64,562.60	5.46%
46IN006	Resolute	E	2,009.0	69,200.2	63,709.13	6.17%
12WS002	Chester	E	815.3	66,960.1	60,695.86	7.62%
29IN004	Springs Global	E	937.4	67,059.3	59,855.80	9.03%
28WS004	Lugoff-Elgin	E	390.6	-	-	-
28WS001	Camden	E	418.5	-	-	-
28WS006	Invista	E	281.0	87,358.7	8,5421.34	0.34%
40IN002	International Paper	E	1,861.0	94,240.2	9,0093.86	2.57%
40PT001	SCE&G-Wateree	E	1,976.0	94,245.1	8,8122.67	4.70%
40IR056	Two Rivers, LLC	R	390.0	93,792.7	8,7288.77	5.15%
40GC001	Columbia CC	E	49.1	-	-	-
40GC013	Windermere	N	12.5	112.5	97.90	11.32%
28IR011	Belger Farms	R	4.4	598.0	582.26	0.76%
28MI002	Unimin Corp.	E	68.0	62.4	Negative	111.03%
28MI002	Unimin Corp.	E	58.0	62.4	3.24	94.70%
28IR011	Belger Farms	R	16.7	-	-	-
43IR054	SC Dept of Corr	R	30.1	846.0	799.98	3.63%
43IR054	SC Dept of Corr	R	35.0	-	-	-

UserID	Facility	N, E, or R	Permit Limit (MGM)	Safe Yield (MGM)	Adjusted Safe Yield (MGM)	Percentage of Safe Yield Allocated
43IR054	SC Dept of Corr	R	6.2	-	-	-
43IR054	SC Dept of Corr	R	13.7	-	-	-
43IR054	SC Dept of Corr	R	7.0	846.0	776.23	6.49%
43IR054	SC Dept of Corr	R	14.4	846.0	815.68	1.73%
43IR054	SC Dept of Corr	R	10.0	846.0	820.08	1.20%
43IR054	SC Dept of Corr	R	7.4	-	-	-
43IR054	SC Dept of Corr	R	19.1	846.0	749.43	9.72%
43IR054	SC Dept of Corr	R	7.4	846.0	822.66	0.89%
28GC006	The Members	E	7.2	-	-	-
43IR011	Triple J Farms	R	390.0	-	-	-

Table 5: Catawba Intakes with Safe Yield and Percentage of Safe Yield Allocated all in CFS

UserID	Facility	N, E, or R	Permit Limit (CFS)	Safe Yield (CFS)	Adjusted Safe Yield (CFS)	Percentage of Safe Yield Allocated
46PN001	Catawba Station	E	189.84	-	-	-
46PN001	Catawba Station	E	269.10	-	-	-
46PN001	Catawba Station	E	6.82	-	-	-
46GC004	River Hills CC	E	4.09	-	-	-
46GC002	Tega Cay Golf Club	E	0.72	-	-	-
46WS003	Rock Hill	E	94.61	-	-	-
46WS003	Rock Hill	E	25.23	1,17-9	2,775.87	0.90%
46IN002	Nation Ford	E	6.81	1,170.82	2,770.81	1.14%
29WS005	LCW&SD	E	78.85	1,450.61	3,361.76	3.19%
29WS005	LCW&SD	E	78.85	1,451.13	3,284.16	5.46%
46IN006	Resolute	E	102.19	1,442.75	3,240.74	6.17%
12WS002	Chester	E	41.47	113.75	3,087.46	7.62%
29IN004	Springs Global	E	47.68	113.64	3,044.73	9.03%
28WS004	Lugoff-Elgin	E	19.87	-	-	-
28WS001	Camden	E	21.29	-	-	-
28WS006	Invista	E	14.29	1,821.33	4,345.19	0.34%
40IN002	International Paper	E	94.67	1,964.80	4,582.87	2.57%
40PT001	SCE&G-Wateree	E	100.51	1,964.91	4,482.60	4.70%
40IR056	Two Rivers, LLC	R	19.84	1,955.47	4,440.19	5.15%
40GC001	Columbia CC	E	2.50	-	-	-
40GC013	Windermere	N	0.64	2.35	4.98	11.32%
28IR011	Belger Farms	R	0.23	12.47	29.62	0.76%
28MI002	Unimin	E	3.46	1.30	Negative	111.03%
28MI002	Unimin	E	2.95	1.30	0.16	94.70%
28IR011	Belger Farms	R	0.85	-	-	-

UserID	Facility	N, E, or R	Permit Limit (CFS)	Safe Yield (CFS)	Adjusted Safe Yield (CFS)	Percentage of Safe Yield Allocated
43IR054	SC Dept of Corr	R	1.53	17.64	40.69	3.63%
43IR054	SC Dept of Corr	R	1.78	-	-	-
43IR054	SC Dept of Corr	R	0.32	-	-	-
43IR054	SC Dept of Corr	R	0.70	-	-	-
43IR054	SC Dept of Corr	R	0.36	17.64	39.49	6.49%
43IR054	SC Dept of Corr	R	0.73	17.64	41.49	1.73%
43IR054	SC Dept of Corr	R	0.51	17.64	41.72	1.20%
43IR054	SC Dept of Corr	R	0.38	-	-	-
43IR054	SC Dept of Corr	R	0.97	17.64	38.12	9.72%
43IR054	SC Dept of Corr	R	0.38	17.64	41.85	0.89%
28GC006	The Members	E	0.37	-	-	-
43IR011	Triple J Farms	R	19.84	-	-	-

The following figure is a map of the Catawba Basin, indicating where intakes are located along the Basin. Figure 20 is the segment of stream that has been permitted over the safe yield.

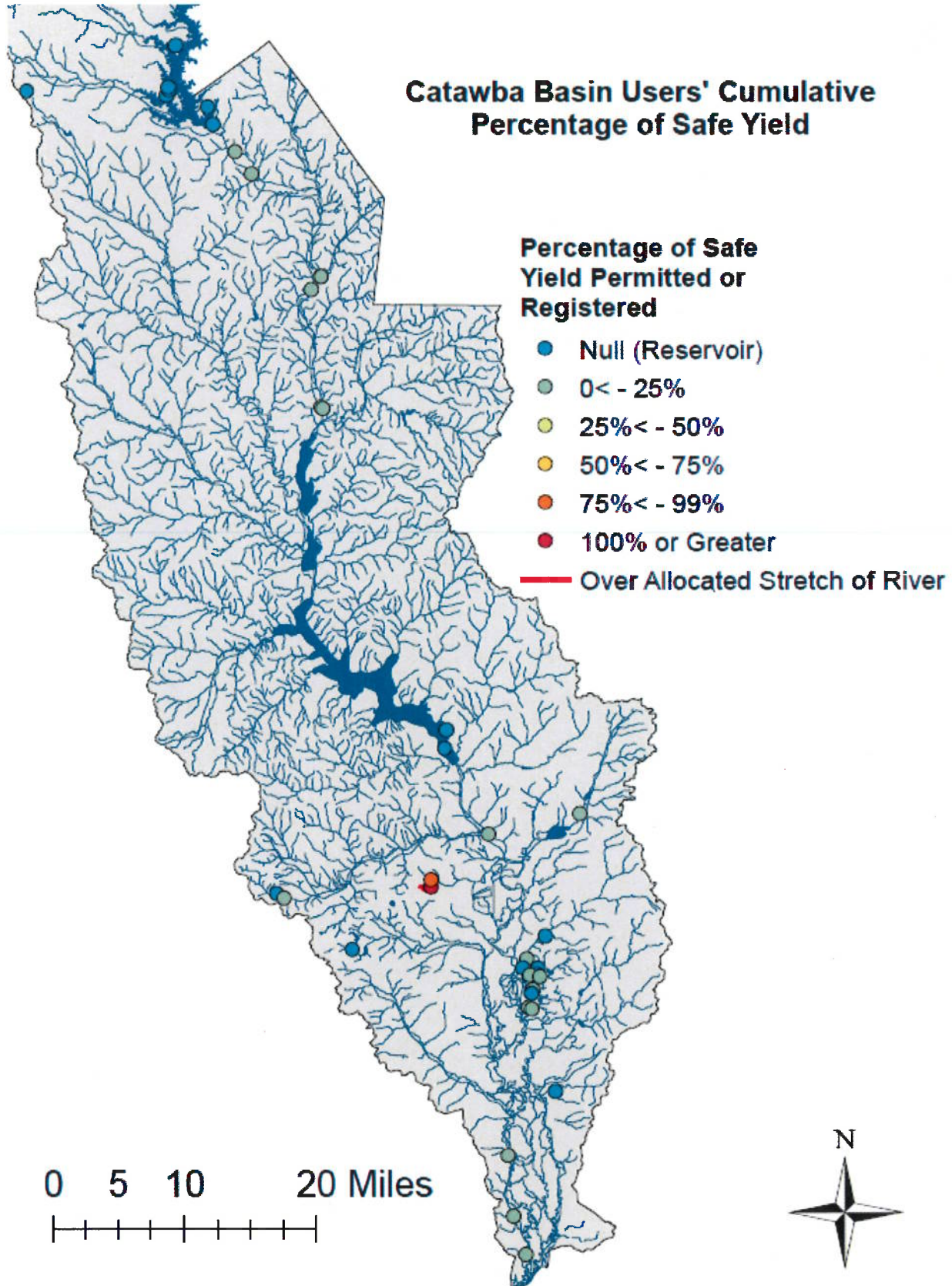


Figure 19: Map of Catawba Basin with Intakes and Percentage of Safe Yield Permitted or Registered

Map of Allocated Stream Segment

Percentage of Safe Yield Permitted or Registered

- Null (Reservoir)
- 0 < - 25%
- 25% < - 50%
- 50% < - 75%
- 75% < - 99%
- 100% or Greater
- Over Allocated Stretch of River

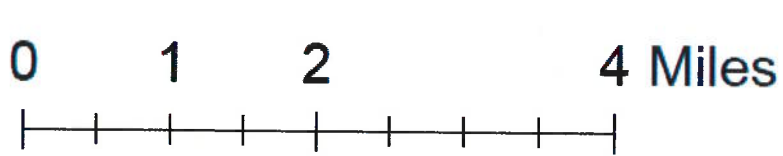
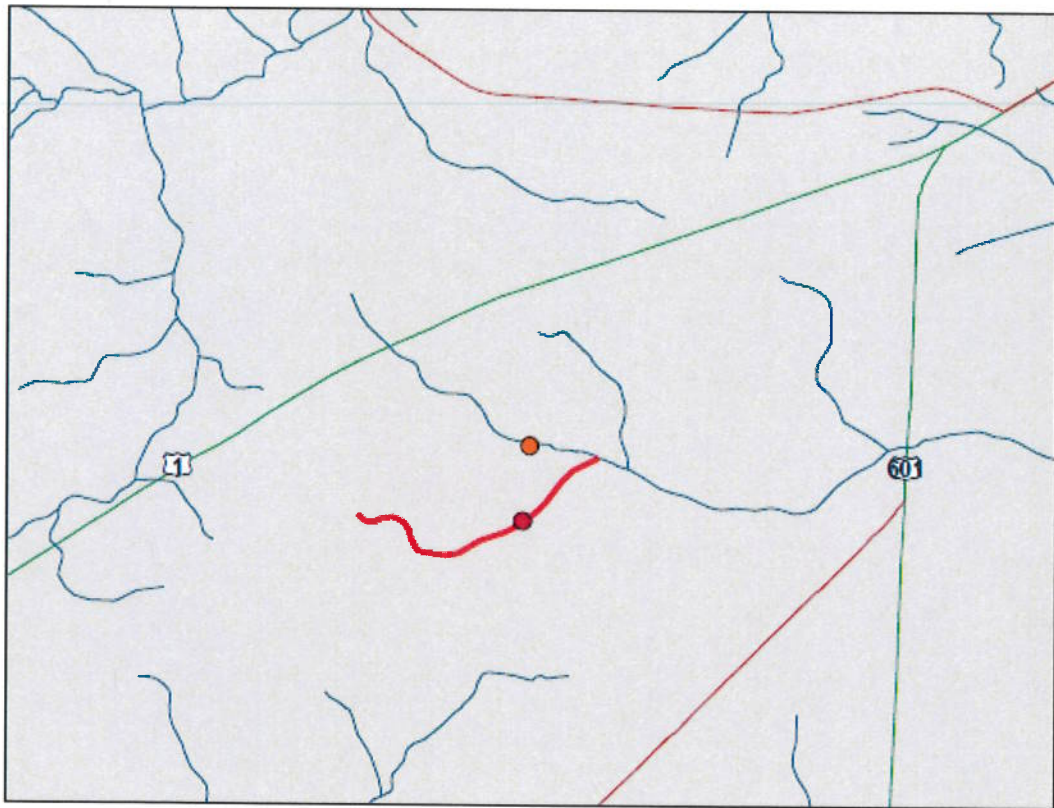


Figure 20: Map of Stream Segment that has been permitted over the Safe Yield: Gillies Creek in Kershaw County

Edisto River Basin

As a result of the review process of the Edisto River Basin, no stretches of river or stream was found to be fully allocated. Several of the irrigators are registered for large amounts of the safe yield, but none are over. Tables 6 and 7 list users within the Edisto Basin, along with respective safe yields, adjusted safe yields, and the percentage of safe yield that has been permitted or registered.

Table 6: Edisto Intakes with Safe Yield and Percentage of Safe Yield Allocated all in MGM

Facility ⁵	UserID	N, E, or R	Permit Limit (MGM)	Safe Yield (MGM)	Adjusted Safe Yield (MGM)	Percentage of Safe Yield Allocated
Titan	02IR024	R	25.0	-	-	-
Walthers	02IR025	R	400.0	6,024.0	5,376.0	11.0%
Pebble Creek	02IR027	R	4.0	2800.5	2,725.5	2.7%
Maury Furtick	02IR028	R	6.0	663.0	657.0	0.9%
Aiken	02WS002	E	248.0	1,112.2	864.2	22.7%
Shivers Trading	05IR005	R	23.7	-	-	-
Phil Sandifer & Son	05IR012	R	50.0	11,018.8	9,769.6	11.6%
Double B Farms	05IR057	R	33.7	13,126.3	13,034.2	0.7%
Rob Bates	06IR020	R	20.0	-	-	-
Page Farms	06IR036	R	4.3	350.0	345.6	1.3%
Gregg Bates Farm	06IR037	R	4.6	290.0	285.5	1.6%
Gregg Bates Farm	06IR037	R	7.6	290.0	277.9	4.3%
Cotton Lane	09IR003	R	19.5	-	-	-
Cotton Lane	09IR003	R	30.1	120.7	90.6	25.4%
Cotton Lane	09IR003	R	6.5	120.7	84.1	30.9%
Haigler	09IR009	R	28.4	-	-	-
Haigler	09IR009	R	36.0	276.8	240.8	13.3%
Haigler	09IR009	R	55.0	276.8	185.8	33.5%
Haigler	09IR009	R	28.0	276.8	157.8	43.8%
Oak Lane	09IR011	R	39.1	-	-	-
Inabinet Farms	09IR046	R	8.0	496.8	488.8	1.6%
Inabinet Farms	09IR046	R	34.0	496.8	454.8	8.6%
Charleston	10WS004	E	8,729.4	42,567.5	26,207.1	39.2%
SCE&G - Canadys	15PT001	E	321.0	-	-	-
SCE&G - Canadys	15PT001	E	952.0	-	-	-
Holmes & Son	19IR002	R	16.1	-	-	-
Holmes & Son	19IR002	R	32.6	-	-	-
Titan	19IR004	R	26.0	-	-	-
Titan	19IR004	R	30.0	-	-	-

⁵ Does not include those facilities that are tidally influenced, which applies to Pee Dee, Salkehatchie, Santee, and Savannah Basins as well.

Facility ⁵	UserID	N, E, or R	Permit Limit (MGM)	Safe Yield (MGM)	Adjusted Safe Yield (MGM)	Percentage of Safe Yield Allocated
Titan	19IR004	R	20.0	-	-	-
Titan	19IR004	R	44.0	-	-	-
Titan	19IR004	R	44.0	-	-	-
Titan	19IR004	R	42.0	-	-	-
Titan	19IR004	R	15.0	-	-	-
Titan	19IR004	R	25.0	-	-	-
Titan	19IR004	R	20.0	-	-	-
Titan	19IR004	R	15.0	-	-	-
Titan	19IR004	R	42.0	-	-	-
Titan	19IR004	R	40.0	-	-	-
Titan	19IR004	R	15.0	-	-	-
Titan	19IR004	R	42.0	-	-	-
Titan	19IR004	R	20.0	-	-	-
Titan	19IR004	R	42.0	-	-	-
Smith WG III	19IR012	R	3.2	-	-	-
Smith WG III	19IR012	R	16.0	-	-	-
Smith WG III	19IR012	R	12.0	-	-	-
Indian Trail	32GC011	E	3.0	-	-	-
Kyzer	32IR004	R	3.0	822.5	747.2	9.3%
Walter P. Rawl & Sons	32IR013	R	19.3	631.6	559.3	11.7%
Thomas C. Fink	32IR050	R	40.0	-	-	-
Miller Farm	32IR058	R	13.0	473.6	420.6	11.4%
Batesburg-Leesville	32WS003	E	38.0	-	-	-
Batesburg-Leesville	32WS003	E	38.0	-	-	-
Orangeburg CC	38GC004	E	11.0	9,410.0	9,209.5	2.2%
SI Group	38IN002	E	2743.3	11,308.6	6,291.8	45.2%
Millwood	38IR004	R	94.5	-	-	-
Millwood	38IR004	R	78.6	-	-	-
Millwood	38IR004	R	98.4	-	-	-
Bull Swamp	38IR014	R	14.9	442.8	428.0	3.4%
Bull Swamp	38IR014	R	16.0	442.8	412.0	7.1%
Bull Swamp	38IR014	R	12.0	442.8	400.0	9.9%
Brown Farm	38IR015	R	4.2	-	-	-
Brown Farm	38IR015	R	13.0	-	-	-
Backman Farm	38IR020	R	60.5	341.0	280.5	18.1%
Williams & Sons	38IR021	R	21.7	11,728.7	11,670.3	0.5%
Williams & Sons	38IR021	R	27.1	-	-	-

Facility ⁵	UserID	N, E, or R	Permit Limit (MGM)	Safe Yield (MGM)	Adjusted Safe Yield (MGM)	Percentage of Safe Yield Allocated
Springfield Grain Co	38IR026	R	96.0	463.2	367.2	21.1%
Shady Grove	38IR040	R	100.6	-	-	-
Gray Farm	38IR042	R	7.0	-	-	-
Willshire	38IR043	R	8.5	380.7	372.2	2.3%
Willshire	38IR043	R	9.6	-	-	-
Springfield	38IR066	R	11.0	630.5	448.1	29.5%
Norway Farm	38IR067	R	30.0	-	-	-
Tampa Creek	38IR075	R	60.5	526.1	369.7	30.3%
River Bluff Sod	38IR077	R	13.0	10,471.2	9,341.6	11.0%
Turf Connections	38IR078	R	15.0	625.9	454.4	27.9%
Boland	38IR081	R	6.0	753.9	741.9	1.6%
Boland	38IR081	R	6.0	753.9	735.9	2.4%
RRR Farms	38IR082	R	134.0	776.7	624.7	19.9%
Bear Spring Farm	38IR139	R	4.3	7,552.9	7,355.4	2.7%
SCE&G - Cope	38PT001	E	670.0	-	-	-
Orangeburg	38WS002	E	1,116.0	11,351.0	9,713.1	14.7%
Orangeburg	38WS002	E	263.5	11,351.0	9,449.6	17.1%
Orangeburg	38WS002	E	372.0	11,351.0	9,077.6	20.4%
Titan	41IR010	R	71.0	-	-	-
Titan	41IR014	R	36.0	-	-	-
Titan	41IR014	R	25.0	-	-	-
Titan	41IR014	R	35.0	-	-	-
Titan	41IR014	R	30.0	-	-	-
Titan	41IR014	R	20.0	-	-	-
Titan	41IR014	R	40.0	-	-	-

Table 7: Edisto Intakes with Safe Yield and Percentage of Safe Yield Allocated all in CFS

Facility	UserID	N, E, or R	Permit Limit (CFS)	Safe Yield (CFS)	Adjusted Safe Yield (CFS)	Percentage of Safe Yield Allocated
Titan	02IR024	R	1.2	-	-	-
Walthers	02IR025	R	2-	300.7	268.3	11.0%
Pebble Creek	02IR027	R	0.2	139.8	136.0	2.7%
Maury Furtick	02IR028	R	0.3	33.1	32.8	0.9%
Aiken	02WS002	E	12.4	55.5	43.1	22.7%
Shivers Trading	05IR005	R	1.2	-	-	-
Phil Sandifer & Son	05IR012	R	2.5	550.0	487.6	11.6%
Double B Farms	05IR057	R	1.7	655.1	650.5	0.7%

Facility	UserID	N, E, or R	Permit Limit (CFS)	Safe Yield (CFS)	Adjusted Safe Yield (CFS)	Percentage of Safe Yield Allocated
Rob Bates	06IR020	R	1.0	-	-	-
Page Farms	06IR036	R	0.2	17.5	17.3	1.3%
Gregg Bates Farm	06IR037	R	0.2	14.5	14.2	1.6%
Gregg Bates Farm	06IR037	R	0.4	14.5	13.9	4.3%
Cotton Lane	09IR003	R	1.0	-	-	-
Cotton Lane	09IR003	R	1.5	6.0	4.5	25.4%
Cotton Lane	09IR003	R	0.3	6.0	4.2	30.9%
Haigler	09IR009	R	1.4	-	-	-
Haigler	09IR009	R	1.8	13.8	12.0	13.3%
Haigler	09IR009	R	2.7	13.8	9.3	33.5%
Haigler	09IR009	R	1.4	13.8	7.9	43.8%
Oak Lane	09IR011	R	2.0	-	-	-
Inabinet Farms	09IR046	R	0.4	24.8	24.4	1.6%
Inabinet Farms	09IR046	R	1.7	24.8	22.7	8.6%
Charleston	10WS004	E	435.7	2,124.6	1,308.0	39.2%
SCE&G - Canadys	15PT001	E	16.0	-	-	-
SCE&G - Canadys	15PT001	E	47.5	-	-	-
Holmes & Son	19IR002	R	0.8	-	-	-
Holmes & Son	19IR002	R	1.6	-	-	-
Titan	19IR004	R	1.3	-	-	-
Titan	19IR004	R	1.5	-	-	-
Titan	19IR004	R	1.0	-	-	-
Titan	19IR004	R	2.2	-	-	-
Titan	19IR004	R	2.2	-	-	-
Titan	19IR004	R	2.1	-	-	-
Titan	19IR004	R	0.7	-	-	-
Titan	19IR004	R	1.2	-	-	-
Titan	19IR004	R	1.0	-	-	-
Titan	19IR004	R	0.7	-	-	-
Titan	19IR004	R	2.1	-	-	-
Titan	19IR004	R	2.0	-	-	-
Titan	19IR004	R	0.7	-	-	-
Titan	19IR004	R	2.1	-	-	-
Titan	19IR004	R	1.0	-	-	-
Titan	19IR004	R	2.1	-	-	-
Smith WG III	19IR012	R	0.2	-	-	-
Smith WG III	19IR012	R	0.8	-	-	-
Smith WG III	19IR012	R	0.6	-	-	-

Facility	UserID	N, E, or R	Permit Limit (CFS)	Safe Yield (CFS)	Adjusted Safe Yield (CFS)	Percentage of Safe Yield Allocated
Indian Trail	32GC011	E	0.1	-	-	-
Kyzer	32IR004	R	0.1	41.1	37.3	9.3%
Walter P. Rawl & Sons	32IR013	R	1.0	31.5	27.9	11.7%
Thomas C. Fink	32IR050	R	2.0	-	-	-
Miller Farm	32IR058	R	0.6	23.6	21.0	11.4%
Batesburg-Leesville	32WS003	E	1.9	-	-	-
Batesburg-Leesville	32WS003	E	1.9	-	-	-
Orangeburg CC	38GC004	E	0.5	469.7	459.7	2.2%
SI Group	38IN002	E	136.9	564.4	314.0	45.2%
Millwood	38IR004	R	4.7	-	-	-
Millwood	38IR004	R	3.9	-	-	-
Millwood	38IR004	R	4.9	-	-	-
Bull Swamp	38IR014	R	0.7	22.1	21.4	3.4%
Bull Swamp	38IR014	R	0.8	22.1	20.6	7.1%
Bull Swamp	38IR014	R	0.6	22.1	20.0	9.9%
Brown Farm	38IR015	R	0.2	-	-	-
Brown Farm	38IR015	R	0.6	-	-	-
Backman Farm	38IR020	R	3.0	17.0	14.0	18.1%
Williams & Sons	38IR021	R	1.1	585.4	582.5	0.5%
Williams & Sons	38IR021	R	1.4	-	-	-
Springfield Grain Co	38IR026	R	4.8	23.1	18.3	21.1%
Shady Grove	38IR040	R	5.0	-	-	-
Gray Farm	38IR042	R	0.3	-	-	-
Willshire	38IR043	R	0.4	19.0	18.6	2.3%
Willshire	38IR043	R	0.5	-	-	-
Springfield	38IR066	R	0.5	31.5	22.4	29.5%
Norway Farm	38IR067	R	1.5	-	-	-
Tampa Creek	38IR075	R	3.0	26.3	18.4	30.3%
River Bluff Sod	38IR077	R	0.6	522.6	466.2	11.0%
Turf Connections	38IR078	R	0.7	31.2	22.7	27.9%
Boland	38IR081	R	0.3	37.6	37.0	1.6%
Boland	38IR081	R	0.3	37.6	36.7	2.4%
RRR Farms	38IR082	R	6.7	38.8	31.2	19.9%
Bear Spring Farm	38IR139	R	0.2	377.0	367.1	2.7%
SCE&G - Cope	38PT001	E	33.4	-	-	-
Orangeburg	38WS002	E	55.7	566.5	484.8	14.7%
Orangeburg	38WS002	E	13.2	566.5	471.6	17.1%
Orangeburg	38WS002	E	18.6	566.5	453.1	20.4%

Facility	UserID	N, E, or R	Permit Limit (CFS)	Safe Yield (CFS)	Adjusted Safe Yield (CFS)	Percentage of Safe Yield Allocated
Titan	41IR010	R	3.5	-	-	-
Titan	41IR014	R	1.8	-	-	-
Titan	41IR014	R	1.2	-	-	-
Titan	41IR014	R	1.7	-	-	-
Titan	41IR014	R	1.5	-	-	-
Titan	41IR014	R	1.0	-	-	-
Titan	41IR014	R	2.0	-	-	-

The following figure is a map of the Edisto Basin, indicating where intakes are located along the Basin.

Edisto Basin Users' Cumulative Percentage of Safe Yield

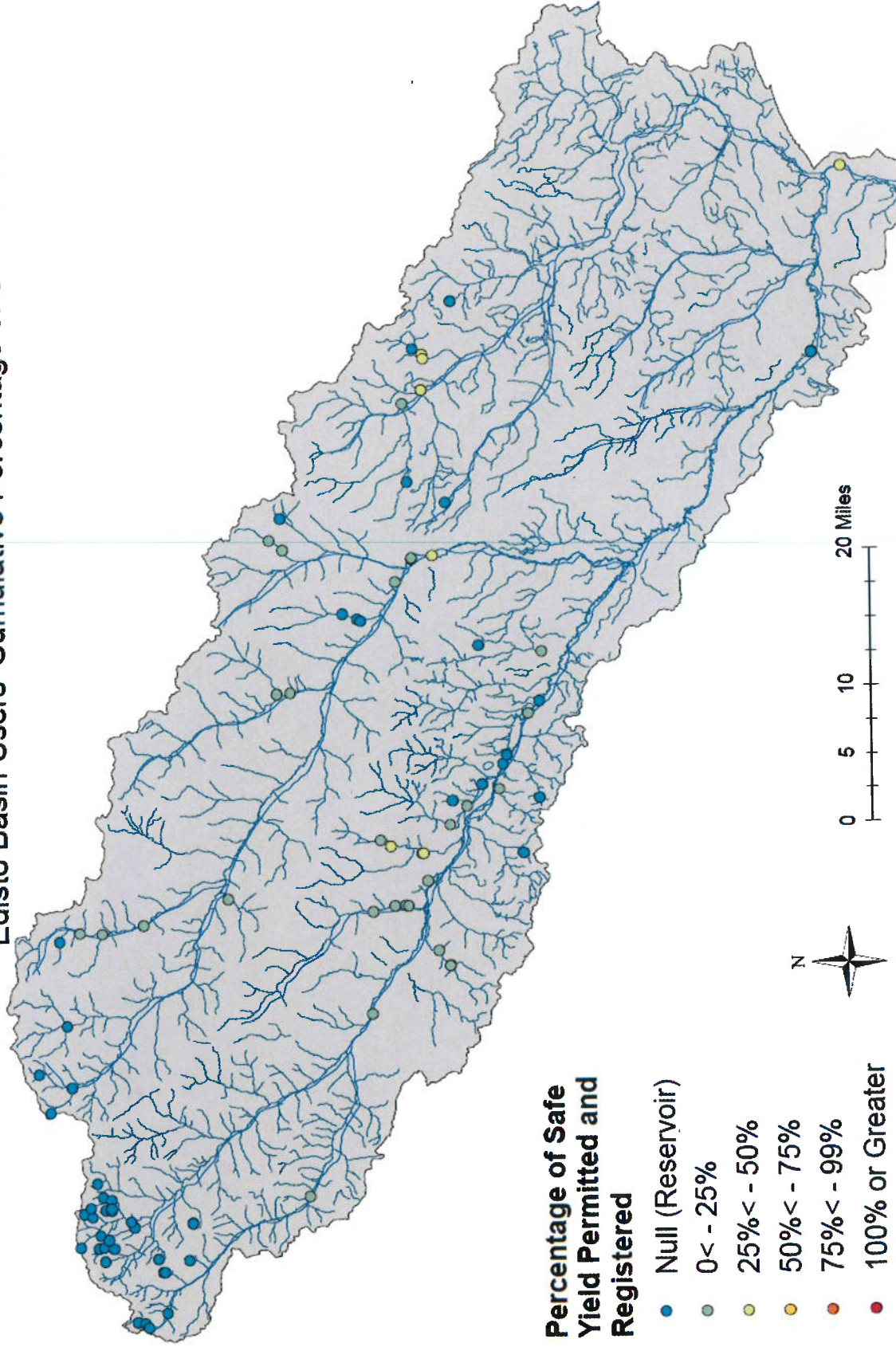


Figure 21: Map of Edisto Basin with Intakes and Percentage of Safe Yield Permitted or Registered

Pee Dee River Basin

As a result of the review process of the Pee Dee River Basin, no stretch of river or stream was found to be fully allocated. Tables 8 and 9 list users within the Pee Dee Basin, along with respective safe yields, adjusted safe yields, and the percentage of safe yield that has been permitted or registered.

Table 8: List of Pee Dee Basin users with Permit Limit, Safe Yield, and Adjusted Safe Yield in MGM

Facility	UserID	N, E, or R	Permit Limit (MGM)	Safe Yield (MGM)	Adjusted Safe Yield (MGM)	Percentage of Safe Yield Allocated
Cheraw	13GC001		47	-	-	-
White Plains	13GC003		49	-	-	-
Hanson (Brewer)	13IN002		205	-	-	-
Turf Connections	13IR008		6	267.67	265.67	2.99%
Hanson (Jefferson)	13MI003		27	-	-	-
Cheraw	13WS001		357	122,080.46	122,074.46	0.30%
Sonoco	16IN005		874	-	-	-
Sonoco	16IN005		335	-	-	-
Nucor	16IN006		31	6,034.67	5,944.27	2.01%
Sugar Hill	16IR012		3	-	-	-
Dargan	16IR015		5	121.67	121.67	4.52%
Dargan	16IR015		6	-	-	-
Rogers	16IR016		90	4,380.0	4,290.0	2.06%
Chapman	16IR030		2	-	-	-
Chapman	16IR030		8	292.00	284.00	3.56%
Lawson Turf	16IR041		26	194.67	174.47	23.63%
Lawson Turf	16IR041		10	-	-	-
Lawson Turf	16IR041		8	-	-	-
Lawson Turf	16IR041		3	-	-	-
Carolina Plantation	16IR080		60	6,180.67	6,180.67	0.97%
HB Robinson	16PN001		3,884	-	-	-
HB Robinson	16PN001		22,386	-	-	-
Florence	21GC001		49	1,119.33	1,119.43	-
WestRock	21IN001		1,250	148,384.82	147,895.29	1.17%
Florence	21WS002		930	139,551.81	138,136.99	1.68%
IP (Georgetown)	22IN006		10,000	180,504.86	177,857.28	2.58%
Belger	28IR011		91	5,304.67	5,304.67	1.72%
Martin Marietta	28MI001		98	-	-	-
Tolson	31IR008		7	11,777.35	11,679.35	0.89%
Tolson	31IR008		5	11,777.35	11,672.35	0.93%
Atkinson	33IR033		8	-	-	-

Facility	UserID	N, E, or R	Permit Limit (MGM)	Safe Yield (MGM)	Adjusted Safe Yield (MGM)	Percentage of Safe Yield Allocated
Domtar	34IN005		937	124,611.13	124,114.13	1.15%
Hinson	34IR002		8	-	-	-
Hinson	34IR002		11	-	-	-
Richard Rogers	34IR003		57	-	-	-
O'Tuel	34IR004		69	-	-	-
McDonald	34IR007		9	876.00	876.22	1.03%
Hanson (Marlboro)	34MI001		134	-	-	-
Bennettsville	34WS001		120	-	-	-
Black Crest	43IR007		34	-	-	-
Black Crest	43IR007		34	2,871.34	2,871.34	1.18%
Black Crest	43IR007		35	-	-	-
Irwin	45IR002		5	-	-	-

Table 9: List of Pee Dee Basin users with Permit Limit, Safe Yield, and Adjusted Safe Yield in CFS

Facility	UserID	N, E, or R	Permit Limit (CFS)	Safe Yield (CFS)	Adjusted Safe Yield (CFS)	Percentage of Safe Yield Allocated
Cheraw	13GC001		2.39	-	-	-
White Plains	13GC003		2.49	-	-	-
Hanson (Brewer)	13IN002		10.43	-	-	-
Turf Connections	13IR008		0.31	13.62	13.51	2.99%
Hanson (Jefferson)	13MI003		1.37	-	-	-
Cheraw	13WS001		18.16	6,209.96	6,209.66	0.30%
Sonoco	16IN005		44.46	-	-	-
Sonoco	16IN005		17.04	-	-	-
Nucor	16IN006		1.58	306.97	302.37	2.01%
Sugar Hill	16IR012		0.15	-	-	-
Dargan	16IR015		0.25	6.19	6.19	4.52%
Dargan	16IR015		0.31	-	-	-
Rogers	16IR016		4.58	222.80	222.80	2.06%
Chapman	16IR030		0.10	-	-	-
Chapman	16IR030		0.41	14.85	14.45	3.56%
Lawson Turf	16IR041		1.32	9.90	8.87	23.63%
Lawson Turf	16IR041		0.51	-	-	-
Lawson Turf	16IR041		0.41	-	-	-
Lawson Turf	16IR041		0.15	-	-	-
Carolina Plantation	16IR080		3.05	314.40	314.40	0.97%
HB Robinson	16PN001		197.57	-	-	-
HB Robinson	16PN001		1,138.73	-	-	-

Facility	UserID	N, E, or R	Permit Limit (CFS)	Safe Yield (CFS)	Adjusted Safe Yield (CFS)	Percentage of Safe Yield Allocated
Florence	21GC001		2.49	-	-	-
WestRock	21IN001		63.58	7,548.01	7,523.11	1.17%
Florence	21WS002		47.31	7,098.69	7,026.73	1.68%
IP (Georgetown)	22IN006		508.68	9,181.88	9,047.21	2.58%
Belger	28IR011		4.63	269.84	269.84	1.72%
Martin Marietta	28MI001		4.99	-	-	-
Tolson	31IR008		0.36	599.09	594.10	0.89%
Tolson	31IR008		0.25	599.09	593.75	0.93%
Atkinson	33IR033		0.41	-	-	-
Domtar	34IN005		47.66	6,338.69	6,313.42	1.15%
Hinson	34IR002		0.41	-	-	-
Hinson	34IR002		0.56	-	-	-
Richard Rogers	34IR003		2.90	-	-	-
O'Tuel	34IR004		3.51	-	-	-
McDonald	34IR007		0.46	44.56	44.57	1.03%
Hanson (Marlboro)	34MI001		6.82	-	-	-
Bennettsville	34WS001		6.10	-	-	-
Black Crest	43IR007		1.73	-	-	-
Black Crest	43IR007		1.73	146.06	146.06	1.18%
Black Crest	43IR007		1.78	-	-	-
Irwin	45IR002		0.25	-	-	-

The following figures show the Pee Dee Basin and where all intakes and registrations are located.

Pee Dee Basin Users' Cumulative Percentage of Safe Yield

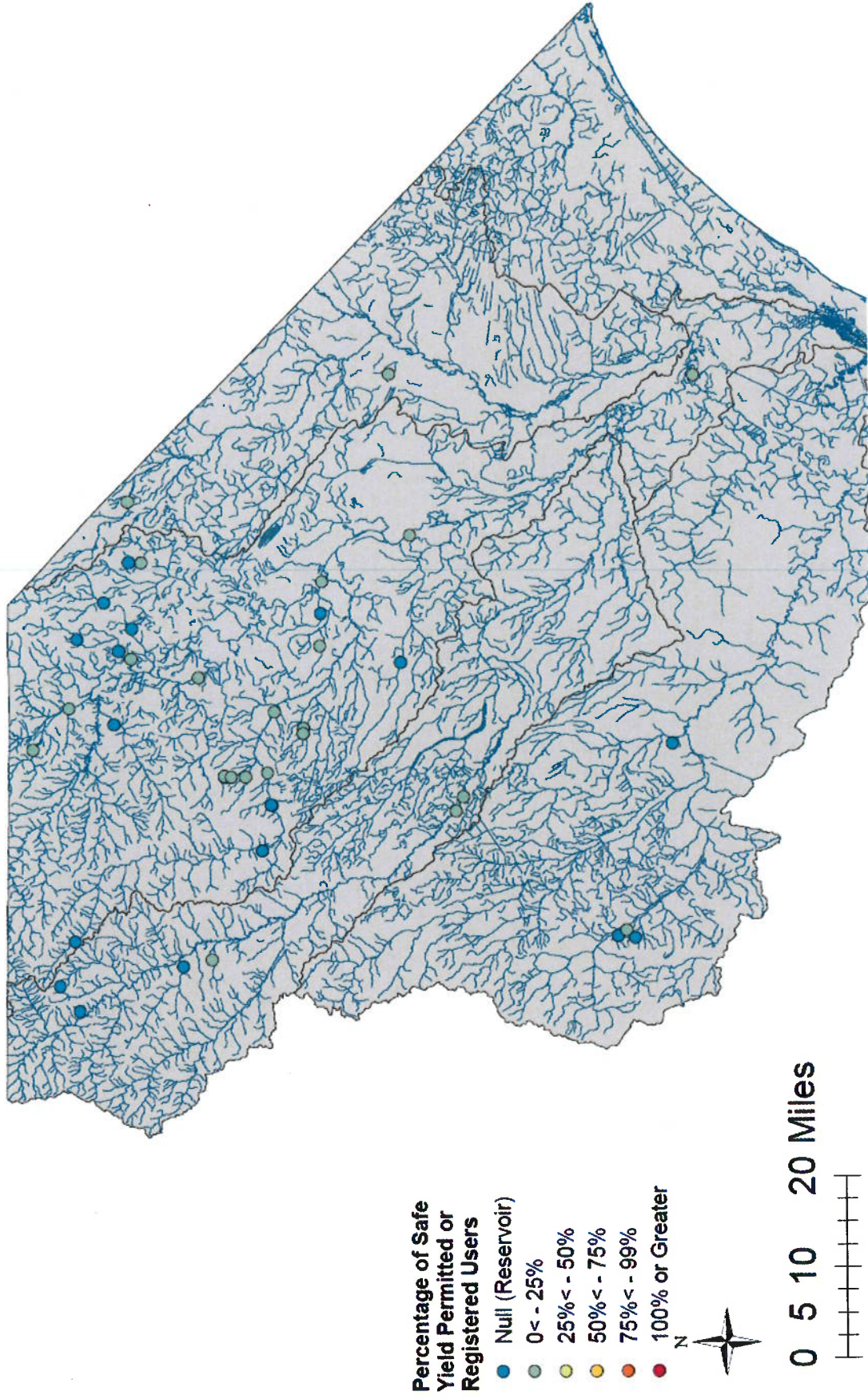


Figure 22: Pee Dee Basin with users and percentage of Safe Yield allocated

Salkehatchie River Basin

As a result of the review process of the Salkehatchie River Basin, no stretch of river or stream was found to be fully allocated. Tables 10 and 11 list users within the Salkehatchie Basin, along with respective safe yields, adjusted safe yields, and the percentage of safe yield that has been permitted or registered.

Table 10: List of Salkehatchie Basin users with Permit Limit, Safe Yield, and Adjusted Safe Yield in MGM

Facility	UserID	N, E, or R	Permit Limit (MGM)	Safe Yield (MGM)	Adjusted Safe Yield (MGM)	Percentage of Safe Yield Allocated
Riddle Dairy Farm	05IR054	R	22.7	574.04	551.34	4.01%
Diem Aden Farm	05IR042	R	15	644.81	607.11	5.93%
Anilorac Farm	05IR011	R	7	927.90	883.20	4.88%
Williams Farms Partnership	15IR012	R	27	1,934.43	1,862.73	3.76%
Williams Farms Partnership	15IR012	R	108	377.45	269.45	29.01%
Williams Farms Partnership	15IR012	R	108	377.45	269.45	29.01%
Williams Farms Partnership	15IR012	R	108	377.45	269.45	29.01%
Williams Farms Partnership	15IR012	R	108	377.45	269.45	29.01%
Breland Farm	15IR002	R	3	2,878.05	2,695.35	6.44%
Danny Hege Farm	06IR007	R	37	2,469.15	2,432.15	1.52%
Brubaker Farms Inc	05IR007	R	27	2,642.14	2,578.14	2.46%
Gary Hege Farm	05IR023	R	62	2,862.32	2,736.32	4.46%
Connelly Farms	03IR011	R	90.8	3,444.22	3,227.22	6.39%
Connelly Farms	03IR011	R	107	-	-	-
Sharp & Sharp Certified Seed	03IR006	R	37	-	-	-
Sharp & Sharp Certified Seed	03IR006	R	16	-	-	-
Chappell Farms	03IR002	R	40	-	-	-
JCO Farms	03ir010	R	615.4	-	-	-
Sharp & Sharp Certified Seed	03IR006	R	145	-	-	-
Coosaw Farms	03IR004	R	27.5	723.44	695.94	3.85%

Table 11: List of Salkehatchie Basin users with Permit Limit, Safe Yield, and Adjusted Safe Yield in CFS

Facility	UserID	N, E, or R	Permit Limit (CFS)	Safe Yield (CFS)	Adjusted Safe Yield (CFS)	Percentage of Safe Yield Allocated
----------	--------	---------------	-----------------------	---------------------	------------------------------	---------------------------------------

Riddle Dairy Farm	05IR054	R	1.15	29.2	28.05	4.01%
Diem Aden Farm	05IR042	R	0.76	32.8	30.88	5.93%
Anilorac Farm	05IR011	R	0.36	47.2	44.93	4.88%
Williams Farms Partnership	15IR012	R	1.37	98.4	94.75	3.76%
Williams Farms Partnership	15IR012	R	5.49	19.2	13.71	29.01%
Williams Farms Partnership	15IR012	R	5.49	19.2	13.71	29.01%
Williams Farms Partnership	15IR012	R	5.49	19.2	13.71	29.01%
Williams Farms Partnership	15IR012	R	5.49	19.2	13.71	29.01%
Breland Farm	15IR002	R	0.15	146.4	137.11	6.44%
Danny Hege Farm	06IR007	R	1.88	125.6	123.72	1.52%
Brubaker Farms Inc	05IR007	R	1.37	134.4	131.14	2.46%
Gary Hege Farm	05IR023	R	3.15	145.6	139.19	4.46%
Connelly Farms	03IR011	R	4.62	175.2	164.16	6.39%
Connelly Farms	03IR011	R	5.44	-	-	-
Sharp & Sharp Certified Seed	03IR006	R	1.88	-	-	-
Sharp & Sharp Certified Seed	03IR006	R	0.81	-	-	-
Chappell Farms	03IR002	R	2.03	-	-	-
JCO Farms	03ir010	R	31.30	-	-	-
Sharp & Sharp Certified Seed	03IR006	R	7.38	-	-	-
Coosaw Farms	03IR004	R	1.40	36.8	35.40	3.85%

The following figures show the Salkehatchie Basin and where intakes are located throughout the basin.

Salkehatchie Basin User's Cumulative Percentage of Safe Yield

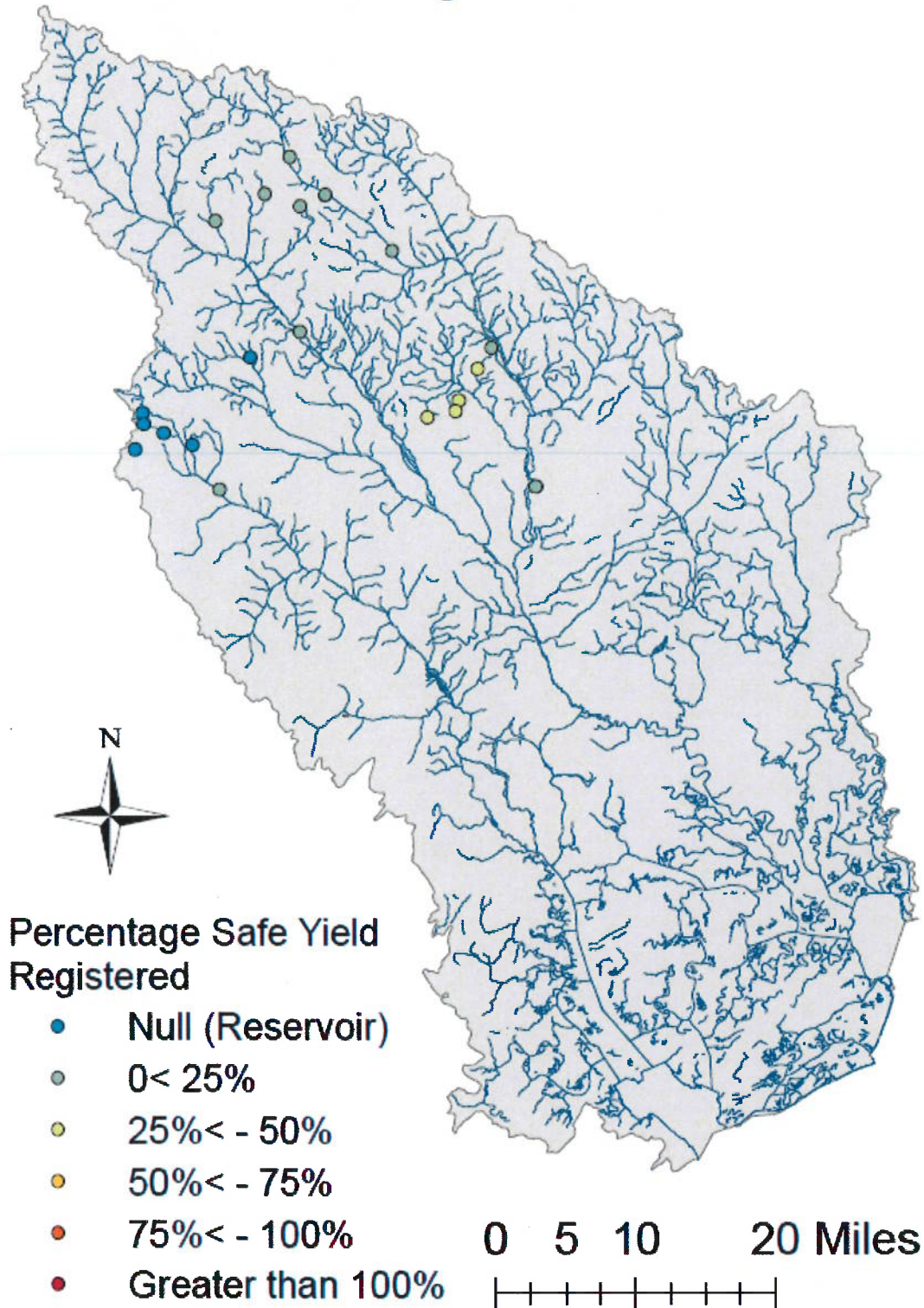


Figure 23: Salkehatchie Basin with users and percentage of Safe Yield allocated.

Saluda River Basin

As a result of the review process of the Saluda River Basin, no stretch of river was found to be fully allocated. Tables 12 and 13 list users within the Saluda Basin, along with respective safe yields, adjusted safe yields, and the percentage of safe yield that has been permitted or registered.

Table 12: Saluda Intakes with Safe Yield and Percentage of Safe Yield Allocated all MGM

Facility	UserID	N, E, or R	Permit Limit (MGM)	Safe Yield (MGM)	Adjusted Safe Yield (MGM)	Percentage of Safe Yield Allocated
Watson Jerrold Farm	02IR011	R	180.0	-	-	-
Twin Oaks Farm	04IR001	R	3.2	250.0	239.2	4.32%
Stoneybrook	04IR002	R	3.0	78.2	75.2	3.84%
Vulcan Mining	04MI001	E	16.0	10,512.7	10,477.5	0.33%
Duke	04PT001	E	10,081	-	-	-
Belton Honea Path	04WS005	E	124.0	-	-	-
DAK	09IN001	E	5,491.0	120,987.3	112,937.9	6.65%
Furman	23GC004	E	26.8	-	-	-
Furman	23GC004	E	41.0	-	-	-
Cliffs Club	23GC013	E	13.4	-	-	-
The Preserve	23GC014	E	58.0	134.2	76.2	43.22%
Beechwood Farm	23IR026	R	12.0	1,910.7	1,898.7	0.63%
Greenville	23WS002	E	1,085.0	-	-	-
Greenville	23WS002	E	992.0	-	-	-
Greenville	23WS002	E	1,860.0	-	-	-
Greenwood	24WS001	E	852.5	-	-	-
Greenwood	24WS001	E	852.5	-	-	-
Laurens	30WS002	E	911.0	-	-	-
Laurens	30WS002	E	1,106.0	-	-	-
LCWSC	30WS003	E	540.0	-	-	-
Lexington	32GC004	E	22.3	382.2	278.1	27.24%
Golden Hills	32GC007	E	32.6	-	-	-
Ponderosa	32GC010	E	44.6	-	-	-
Shaw Industries	32IN006	E	1,365.0	41,626.3	40,261.3	3.28%
CMC Steel	32IN051	E	48.3	113,412.8	111,628.0	1.57%
Sease Clinton	32IR005	R	10.2	-	-	-
Sease Clinton	32IR005	R	10.0	-	-	-
Sease Clinton	32IR005	R	9.5	431.3	421.3	2.32%
Sease James	32IR021	R	5.6	-	-	-
Sease James	32IR021	R	20.4	-	-	-
Sease James	32IR021	R	7.1	-	-	-
Sease James	32IR021	R	6.7	-	-	-

Facility	UserID	N, E, or R	Permit Limit (MGM)	Safe Yield (MGM)	Adjusted Safe Yield (MGM)	Percentage of Safe Yield Allocated
Sease James	32IR021	R	21.8	230.6	208.8	9.46%
Clayton Rawl Farms	32IR056	R	40.0	-	-	-
Martin Marietta	32MI001	E	67.0	113,355.3	111,618.8	1.53%
SCE&G (Dominion)	32PT001	E	5,175.0	-	-	-
Cayce	32WS004	E	722.3	113,495.7	110,988.6	2.21%
West Columbia	32WS008	E	260.4	113,199.9	111,574.5	1.44%
West Columbia	32WS052	E	1,054.0	-	-	-
Overbridge Farm	36IR002	R	10.6	95.4	84.8	11.11%
Satterwhite Farm	36IR004	R	4.0	720.9	716.9	0.55%
Mayer Farm	36IR009	R	6.5	-	-	-
Mayer Farm	36IR009	R	6.5	848.3	787.9	7.12%
Bush River Farms	36IR035	R	17.0	831.2	806.4	2.98%
Leslea Farms	36IR037	R	12.1	-	-	-
Leslea Farms	36IR037	R	3.8	-	-	-
Newberry	36WS001	E	682.0	30,395.9	18,122.7	40.38%
NCWSA	36WS002	E	186.0	-	-	-
Merritt Bros	37IR017	R	7.0	-	-	-
Merritt Bros	37IR017	R	3.0	-	-	-
Merritt Bros	37IR017	R	7.0	-	-	-
Merritt Bros	37IR017	R	0.6	104.4	96.8	7.28%
Rolling Green	39GC002	E	15.8	-	-	-
Smithfields	39GC003	E	44.6	-	-	-
The Rock	39GC006	E	7.1	277.1	27-	2.58%
Easley	39WS001	E	1,116.0	-	-	-
Southland Fisheries	40AQ018	R	9.2	-	-	-
Southland Fisheries	40AQ018	R	13.8	-	-	-
Forest Lake	40GC002	E	11.3	-	-	-
The Members Club	40GC005	E	6.7	-	-	-
The Members Club	40GC005	E	9.8	-	-	-
The Members Club	40GC005	E	3.4	-	-	-
Walker Farm	40IR001	R	3.0	481.4	478.4	0.62%
Columbia	40WS002	E	3,875.0	-	-	-
Titan Farms	41IR014	R	25.0	-	-	-
Titan Farms	41IR014	R	15.0	-	-	-
Titan Farms	41IR014	R	20.0	-	-	-
Titan Farms	41IR014	R	40.0	-	-	-
SCWSA	41WS003	E	465.0	-	-	-
Batesburg-Leesville	41WS004	N	167.3	-	-	-

Table 13: Saluda Intakes with Safe Yield and Percentage of Safe Yield Allocated all in CFS

Facility	UserID	N, E, or R	Permit Limit (CFS)	Safe Yield (CFS)	Adjusted Safe Yield (CFS)	Percentage of Safe Yield Allocated
Watson Jerrold Farm	02IR011	R	9.2	-	-	-
Twin Oaks Farm	04IR001	R	0.2	12.7	12.2	4.32%
Stoneybrook	04IR002	R	0.2	4	3.8	3.84%
Vulcan Mining	04MI001	E	0.8	534.8	533.0	0.33%
Duke	04PT001	E	512.46	-	-	-
Belton Honea Path	04WS005	E	6.3	-	-	-
DAK	09IN001	E	279.3	6,154.4	5,744.9	6.65%
Furman	23GC004	E	1.4	-	-	-
Furman	23GC004	E	2.1	-	-	-
Cliffs Club	23GC013	E	0.7	-	-	-
The Preserve	23GC014	E	3.0	6.8	3.9	43.22%
Beechwood Farm	23IR026	R	0.6	97.2	96.6	0.63%
Greenville	23WS002	E	55.2	-	-	-
Greenville	23WS002	E	50.5	-	-	-
Greenville	23WS002	E	94.6	-	-	-
Greenwood	24WS001	E	43.4	-	-	-
Greenwood	24WS001	E	43.4	-	-	-
Laurens	30WS002	E	46.3	-	-	-
Laurens	30WS002	E	56.3	-	-	-
LCWSC	30WS003	E	27.5	-	-	-
Lexington	32GC004	E	1.1	19.4	14.1	27.24%
Golden Hills	32GC007	E	1.7	-	-	-
Ponderosa	32GC010	E	2.3	-	-	-
Shaw Industries	32IN006	E	69.4	2,117.4	2,048.0	3.28%
CMC Steel	32IN051	E	2.5	5,769.1	5,678.3	1.57%
Sease Clinton	32IR005	R	0.5	-	-	-
Sease Clinton	32IR005	R	0.5	-	-	-
Sease Clinton	32IR005	R	0.5	21.9	21.4	2.32%
Sease James	32IR021	R	0.3	-	-	-
Sease James	32IR021	R	1.0	-	-	-
Sease James	32IR021	R	0.4	-	-	-
Sease James	32IR021	R	0.3	-	-	-
Sease James	32IR021	R	1.1	7.2	10.6	9.46%
Clayton Rawl Farms	32IR056	R	2.0	-	-	-
Martin Marietta	32MI001	E	3.4	5,766.1	5,677.8	1.53%
SCE&G (Dominion)	32PT001	E	263.2	-	-	-
Cayce	32WS004	E	36.7	5,773.3	5,645.8	2.21%

Facility	UserID	N, E, or R	Permit Limit (CFS)	Safe Yield (CFS)	Adjusted Safe Yield (CFS)	Percentage of Safe Yield Allocated
West Columbia	32WS008	E	13.2	5,758.2	5,675.6	1.44%
West Columbia	32WS052	E	53.6	-	-	-
Overbridge Farm	36IR002	R	0.5	4.9	4.3	11.11%
Satterwhite Farm	36IR004	R	0.2	36.7	36.5	0.55%
Mayer Farm	36IR009	R	0.3	-	-	-
Mayer Farm	36IR009	R	0.3	43.2	40.1	7.12%
Bush River Farms	36IR035	R	0.9	42.3	41.0	2.98%
Leslea Farms	36IR037	R	0.6	-	-	-
Leslea Farms	36IR037	R	0.2	-	-	-
Newberry	36WS001	E	34.7	1,546.2	921.9	40.38%
NCWSA	36WS002	E	9.5	-	-	-
Merritt Bros	37IR017	R	0.4	-	-	-
Merritt Bros	37IR017	R	0.2	-	-	-
Merritt Bros	37IR017	R	0.4	-	-	-
Merritt Bros	37IR017	R	-	5.3	4.9	7.28%
Rolling Green	39GC002	E	0.8	-	-	-
Smithfields	39GC003	E	2.3	-	-	-
The Rock	39GC006	E	0.4	14.1	13.7	2.58%
Easley	39WS001	E	56.8	-	-	-
Southland Fisheries	40AQ018	R	0.5	-	-	-
Southland Fisheries	40AQ018	R	0.7	-	-	-
Forest Lake	40GC002	E	0.6	-	-	-
The Members Club	40GC005	E	0.3	-	-	-
The Members Club	40GC005	E	0.5	-	-	-
The Members Club	40GC005	E	0.2	-	-	-
Walker Farm	40IR001	R	0.2	24.49	24.3	0.62%
Columbia	40WS002	E	197.1	-	-	-
Titan Farms	41IR014	R	1.3	-	-	-
Titan Farms	41IR014	R	0.8	-	-	-
Titan Farms	41IR014	R	1.0	-	-	-
Titan Farms	41IR014	R	2.0	-	-	-
SCWSA	41WS003	E	23.7	-	-	-
Batesburg-Leesville	41WS004	N	8.5	-	-	-

The following figure is a map of the Saluda Basin, indicating where users are located across the basin.

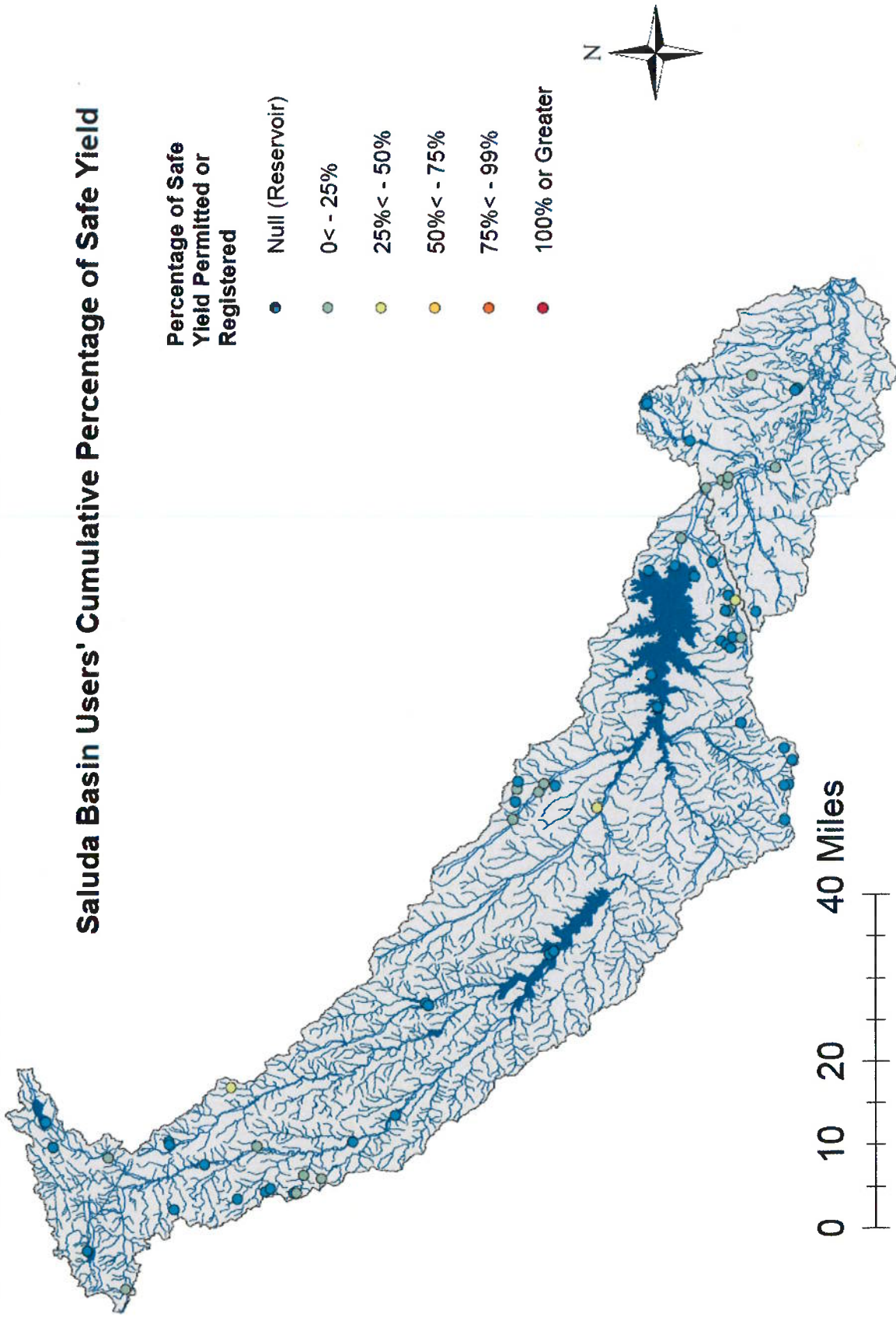


Figure 24: Map of Saluda Basin with Intakes and Percentage of Safe Yield Permitted or Registered

Santee River Basin

As a result of the review process of the Santee River Basin, no stretches of river or stream was found to be fully allocated. Tables 14 and 15 list users within the Santee Basin, along with respective safe yields, adjusted safe yields, and the percentage of safe yield that has been permitted or registered.

Table 14: Santee Intakes with Safe Yield and Percentage of Safe Yield Allocated all in MGM

Facility	UserID	N, E, or R	Permit Limit (MGM)	Safe Yield (MGM)	Adjusted Safe Yield (MGM)	Percentage of Safe Yield Allocated
Palmetto Farms	09IR035	R	32	-	-	-
St. Julian	38IR024	R	7	-	-	-
St. Julian	38IR024	R	20.366	-	-	-
Santee Cooper - Lake	38WS052	E	775	-	-	-
Santee-Cooper Resort	38GC006	E	26.78	-	-	-
Chargeurs	08IN001	E	15.6	171,875.86	171,860.26	0.01%
Martin Marietta	22MI001	E	66.96	-	-	-
Winyah Station	22PT001	E	558	171,857.96	171,284.36	0.33%
Winyah Station	22PT001	E	3,348	171,857.96	167,936.36	2.28%
R. Dargan Culclasure	09IR007	R	28.23	393.18	364.95	7.18%
Lyons Bros	09IR058	R	9	718.02	680.79	5.19%
Charleston	10WS004	E	304.16	-	-	-
Kapstone	10IN003	E	3042	-	-	-
Cross Station	08PT003	E	1,436.29	-	-	-
Cross Station	08PT003	E	1,436.29	-	-	-
Santee Cooper RWS	08WS007	E	2325	-	-	-
Santee Cooper RWS	08WS007	E	2325	-	-	-
Santee Cooper (formerly Jeffries)	08PT002	E	707	-	-	-
Santee Cooper (formerly Jeffries)	08PT002	E	4693	-	-	-
ZZ Real Estate	08IR001	R	181.93	-	-	-
DAK	08IN003	E	134	355,816.47	355,682.47	-4%
Williams Station	08PT001	E	982	-	-	-
Williams Station	08PT001	E	1,7142	-	-	-
Charleston	10WS004	E	4,562.5	-	-	-
Sun Chemical	08IN008	E	401.76	455,684.05	437,024.05	4.09%
BP Amoco	08IN006	E	2325	477,995.85	457,010.85	4.39%

Table 15: Santee Intakes with Safe Yield and Percentage of Safe Yield Allocated all in CFS

Facility	UserID	N, E, or R	Permit Limit (CFS)	Safe Yield (CFS)	Adjusted Safe Yield (CFS)	Percentage of Safe Yield Allocated
----------	--------	------------	--------------------	------------------	---------------------------	------------------------------------

Palmetto Farms	09IR035	R	1.63	-	-	-
St. Julian	38IR024	R	1.04	-	-	-
St. Julian	38IR024	R	0.36	-	-	-
Santee Cooper - Lake	38WS052	E	39.42	-	-	-
Santee-Cooper Resort	38GC006	E	1.36	-	-	-
Chargeurs	08IN001	E	0.79	8,742.94	8,742.15	0.01%
Martin Marietta	22MI001	E	3.41	-	-	-
Winyah Station	22PT001	E	28.38	8,742.03	8,712.86	0.33%
Winyah Station	22PT001	E	170.31	8,742.03	8,542.55	2.28%
R. Dargan Culclasure	09IR007	R	1.44	20.00	18.56	7.18%
Lyons Bros	09IR058	R	0.46	36.52	34.63	5.19%
Charleston	10WS004	E	15.47	-	-	-
Kapstone	10IN003	E	154.74	-	-	-
Cross Station	08PT003	E	73.05	-	-	-
Cross Station	08PT003	E	73.05	-	-	-
Santee Cooper RWS	08WS007	E	118.27	-	-	-
Santee Cooper RWS	08WS007	E	118.27	-	-	-
Santee Cooper (formerly Jeffries)	08PT002	E	35.96	-	-	-
Santee Cooper (formerly Jeffries)	08PT002	E	238.72	-	-	-
ZZ Real Estate	08IR001	R	9.26	-	-	-
DAK	08IN003	E	6.82	18,099.59	18,092.78	0.04%
Williams Station	08PT001	E	49.95	-	-	-
Williams Station	08PT001	E	871.98	-	-	-
Charleston	10WS004	E	232.11	-	-	-
Sun Chemical	08IN008	E	20.45	23,179.64	22,230.44	4.09%
BP Amoco	08IN006	E	118.27	24,314.59	23,247.13	4.39%

The following figure is a map of the Santee Basin, indicating where users are located across the basin.

Santee Basin Users' Cumulative Percentage of Safe Yield

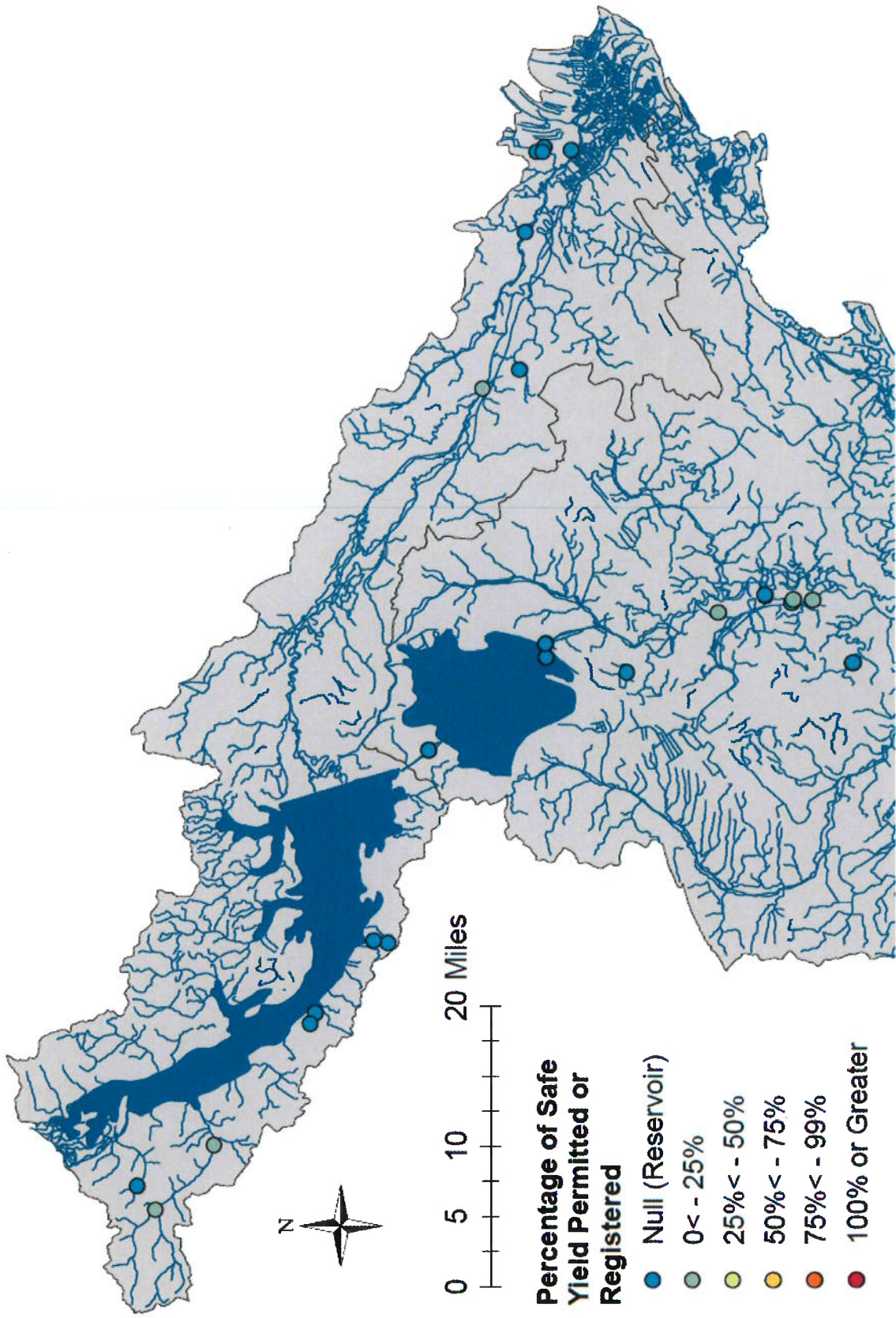


Figure 25: Map of Santee Basin with Intakes and Percentage of Safe Yield Permitted or Registered

Savannah River Basin

As a result of the review process of the Savannah River Basin, no stretches of river or stream was found to be fully allocated. Tables 16 and 17 list users within the Savannah Basin, along with respective safe yields, adjusted safe yields, and the percentage of safe yield that has been permitted or registered.

Table 16: Savannah Intakes with Safe Yield and Percentage of Safe Yield Allocated all in MGM

Facility	UserID	N, E, or R	Permit Limit (MGM)	Safe Yield (MGM)	Adjusted Safe Yield (MGM)	Percentage of Safe Yield Allocated
Keowee Vineyards	39GC009	E	18	-	-	-
Keowee Falls	23GC015	E	30.36	-	-	-
Reserve at Keowee	39GC010	E	61.6	-	-	-
Keowee Springs	39GC007	E	16.93	-	-	-
Keowee Key	37GC001	E	44.64	-	-	-
Holcombe Farm	37IR005	R	3	429.57	426.57	0.70%
Greenville	23WS007	E	4,650	-	-	-
Calyx	37IR058	R	4	2,499.73	2,495.73	0.16%
Oconee	37PN001	E	94,817	-	-	-
Oconee	37PN001	E	68	-	-	-
Walhalla	37WS009	E	202.5	-	-	-
Seneca	37WS004	E	930	-	-	-
Pickens	39WS005	E	60	527.69	467.69	11.37%
Pickens	39WS005	E	120	-	-	-
Vulcan	39IN007	E	62.50	118.32	55.82	52.82%
Easley Central WD	39WS003	E	93	2,973.73	2,758.23	7.25%
Shaw	39IN013	E	102.67	3,026.00	2,707.83	10.51%
Clemson Energy	39IN010	E	563.10	-	-	-
Walker	39GC008	E	35.7	-	-	-
Walker	39GC008	E	11.696	-	-	-
Walhalla	37WS002	E	93	377.44	284.44	24.64%
Walhalla	37WS002	E	24	-	-	-
Head Lee Nursery	37IR011	R	282	1,406.12	1,376.12	2.13%
Milliken	39IN008	E	78	1,124.13	1,046.13	6.94%
Mt Vernon Mills	04IN017	E	21.4	2,157.30	2,135.90	0.99%
ARJWS	04WS006	E	1,860	-	-	-
ARJWS	04IN051	E	806	-	-	-
Westminster	37WS003	E	124	3,768.91	3,644.91	3.29%
Pioneer	37WS001	E	232.5	-	-	-
SC Rainey Station	04PT002	E	509	-	-	-
Hanson Aggregates	04MI002	E	29	125.32	96.32	23.14%

Facility	UserID	N, E, or R	Permit Limit (MGM)	Safe Yield (MGM)	Adjusted Safe Yield (MGM)	Percentage of Safe Yield Allocated
Abbeville	01WS002	E	315	-	-	-
Mohawk	01WS004	E	150	-	-	-
Hickory Knob	35GC002	E	25	-	-	-
Savannah Lakes	35GC003	E	53.6	-	-	-
Savannah Lakes	35GC003	E	53.6	-	-	-
McCormick	35WS001	E	88.7	-	-	-
WG Smith	19IR012	R	4	-	-	-
Gurosik Farm	19IR055	R	3	7,736.20	7,733.20	0.04%
Gurosik Farm	19IR055	R	2.5	-	-	-
Gurosik Farm	19IR055	R	5	-	-	-
Gurosik Farm	19IR055	R	0.5	-	-	-
ECW&SA	19WS001	E	1,208.69	133,497.44	132,799.94	0.52%
North Augusta	02WS007	E	1891	134,058.68	132,059.18	1.49%
River Golf Club	02GC008	E	30.13	134,221.15	132,191.52	1.51%
Graniteville	02WS030	E	121.7	675.67	553.97	18.01%
Sage Valley	02GC012	E	160.58	-	-	-
Graniteville	02WS029	E	620	1,121.82	219.54	66.12%
Breezy Hill	02WS005	E	1,674	-	-	-
Mason's Master Turf	02IR014	R	0.007	134,901.55	132,871.91	1.50%
SCE&G Urquhart Station	02PT001	E	6600	134,834.90	126,205.25	6.40%
Kimberly-Clark	02IN003	E	1607	135,011.18	124,774.54	7.58%
Woodside	02GC007	E	93.7	-	-	-
Woodside	02GC007	E	93.7	-	-	-
The Reserve	02GC052	E	12	-	-	-
The Reserve	02GC052	E	10	-	-	-
US DOE	02IN010	E	10,950	147,814.84	126,628.18	14.33%
US DOE	02IN010	E	10,950	147,814.84	115,678.17	21.74%
US DOE	02IN010	E	3,285	147,814.84	112,393.17	23.96%
BJW&SA	07WS005	E	4,836	177,319.74	137,062.06	22.70%

Table 17: Savannah Intakes with Safe Yield and Percentage of Safe Yield Allocated all in CFS

Facility	UserID	N, E, or R	Permit Limit (CFS)	Safe Yield (CFS)	Adjusted Safe Yield (CFS)	Percentage of Safe Yield Allocated
Keowee Vineyards	39GC009	E	0.92	-	-	-
Keowee Falls	23GC015	E	1.54	-	-	-
Reserve at Keowee	39GC010	E	3.13	-	-	-
Keowee Springs	39GC007	E	0.86	-	-	-
Keowee Key	37GC001	E	2.27	-	-	-
Holcombe Farm	37IR005	R	0.15	21.85	21.70	0.70%
Greenville	23WS007	E	236.54	-	-	-
Calyx	37IR058	R	0.20	127.16	126.95	0.16%
Oconee	37PN001	E	4,823.14	-	-	-
Oconee	37PN001	E	3.46	-	-	-
Walhalla	37WS009	E	10.30	-	-	-
Seneca	37WS004	E	47.31	-	-	-
Pickens	39WS005	E	3.05	26.84	23.79	11.37%
Pickens	39WS005	E	6.10	-	-	-
Vulcan	39IN007	E	3.18	6.02	2.84	52.82%
Easley Central WD	39WS003	E	4.73	151.27	140.30	7.25%
Shaw	39IN013	E	5.22	153.93	137.74	10.51%
Clemson Energy	39IN010	E	28.62	-	-	-
Walker	39GC008	E	1.82	-	-	-
Walker	39GC008	E	0.59	-	-	-
Walhalla	37WS002	E	4.73	19.20	14.47	24.64%
Walhalla	37WS002	E	1.22	-	-	-
Head Lee Nursery	37IR011	R	14.34	71.53	7-	2.13%
Milliken	39IN008	E	3.97	57.18	53.21	6.94%
Mt Vernon Mills	04IN017	E	1.09	109.74	108.65	0.99%
ARJWS	04WS006	E	94.61	-	-	-
ARJWS	04IN051	E	41.00	-	-	-
Westminster	37WS003	E	6.31	191.72	185.41	3.29%
Pioneer	37WS001	E	11.83	-	-	-
SC Rainey Station	04PT002	E	25.89	-	-	-
Hanson Aggregates	04MI002	E	1.48	6.37	4.90	23.14%
Abbeville	01WS002	E	16.02	-	-	-
Mohawk	01WS004	E	7.63	-	-	-
Hickory Knob	35GC002	E	1.27	-	-	-
Savannah Lakes	35GC003	E	2.73	-	-	-
Savannah Lakes	35GC003	E	2.73	-	-	-

Facility	UserID	N, E, or R	Permit Limit (CFS)	Safe Yield (CFS)	Adjusted Safe Yield (CFS)	Percentage of Safe Yield Allocated
McCormick	35WS001	E	4.51	-	-	-
WG Smith	19IR012	R	0.20	-	-	-
Gurosik Farm	19IR055	R	0.15	393.52	393.37	0.04%
Gurosik Farm	19IR055	R	0.13	-	-	-
Gurosik Farm	19IR055	R	0.25	-	-	-
Gurosik Farm	19IR055	R	0.03	-	-	-
ECW&SA	19WS001	E	61.48	6,790.72	6,755.24	0.52%
North Augusta	02WS007	E	96.19	6,819.27	6,717.56	1.49%
River Golf Club	02GC008	E	1.53	6,827.53	6,724.29	1.51%
Graniteville	02WS030	E	6.19	34.37	28.18	18.01%
Sage Valley	02GC012	E	8.17	-	-	-
Graniteville	02WS029	E	31.54	57.06	11.17	66.12%
Breezy Hill	02WS005	E	85.15	-	-	-
Mason's Master Turf	02IR014	R	0.00035	6,862.14	6,758.90	1.50%
SCE&G Urquhart Station	02PT001	E	335.73	6,858.75	6,419.78	6.40%
Kimberly-Clark	02IN003	E	81.74	6,867.72	6,347.00	7.58%
Woodside	02GC007	E	4.77	-	-	-
Woodside	02GC007	E	4.77	-	-	-
The Reserve	02GC052	E	0.61	-	-	-
The Reserve	02GC052	E	0.51	-	-	-
US DOE	02IN010	E	557.00	7,519.01	6,441.29	14.33%
US DOE	02IN010	E	557.00	7,519.01	5,884.29	21.74%
US DOE	02IN010	E	167.10	7,519.01	5,717.19	23.96%
BJW&SA	07WS005	E	246.00	9,019.86	6,972.04	22.70%

The following figure is a map of the Savannah Basin, indicating where users are located across the basin.

Savannah Basin Users' Cumulative Percentage of Safe Yield

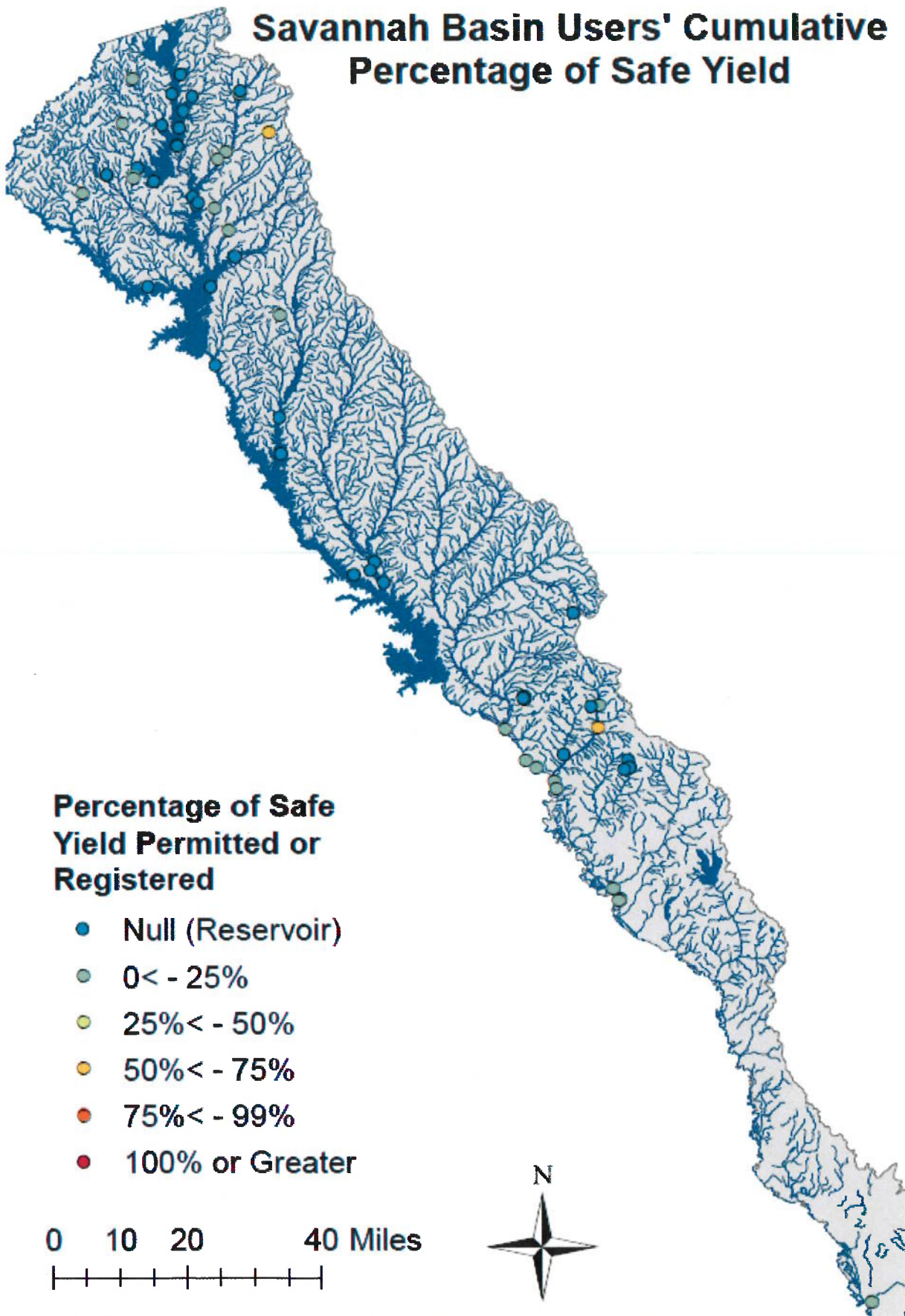


Figure 26: Map of Savannah Basin with Intakes and Percentage of Safe Yield Permitted or Registered