



Infant Mortality and Selected Birth Characteristics



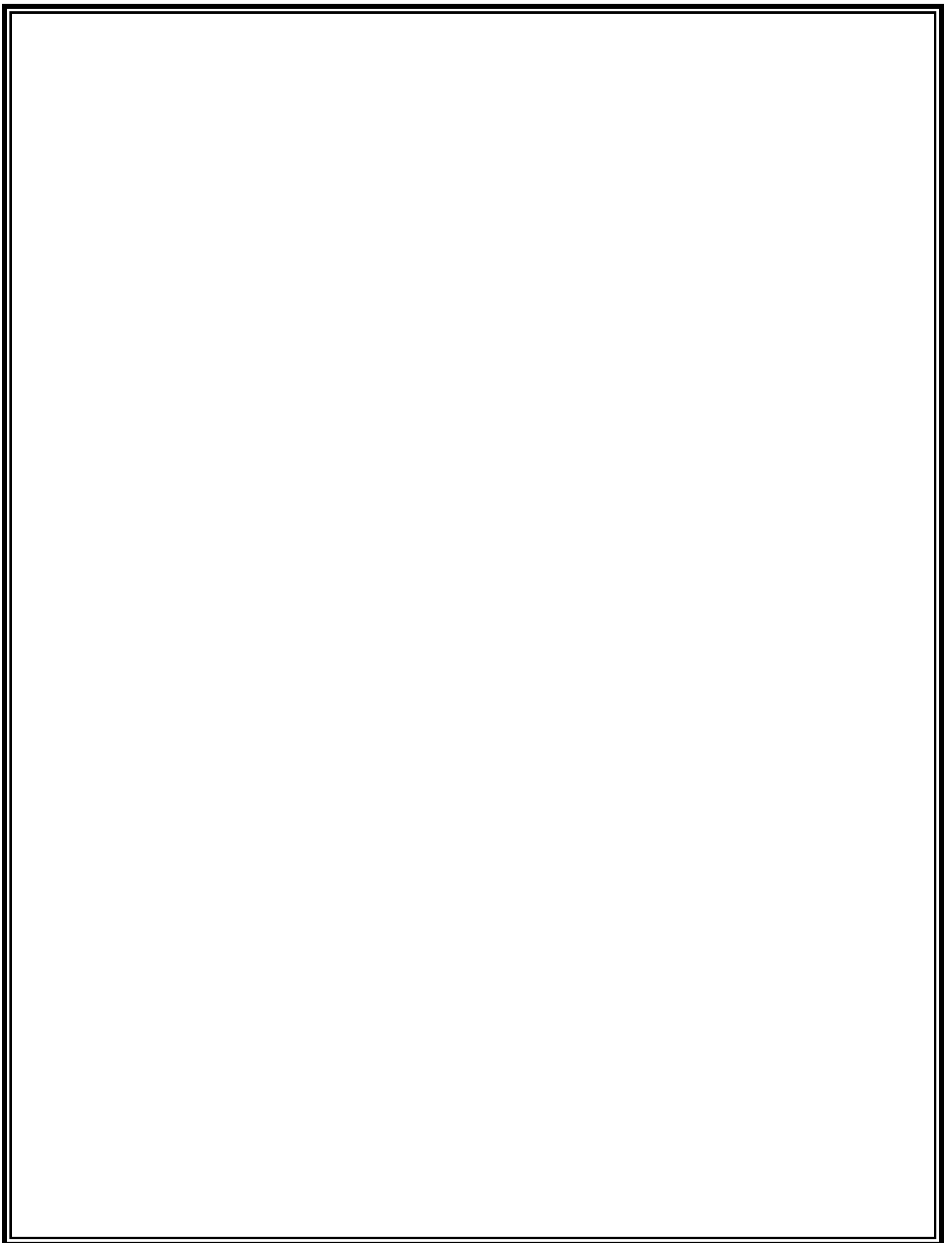
2011 South Carolina Residence Data

September 2012

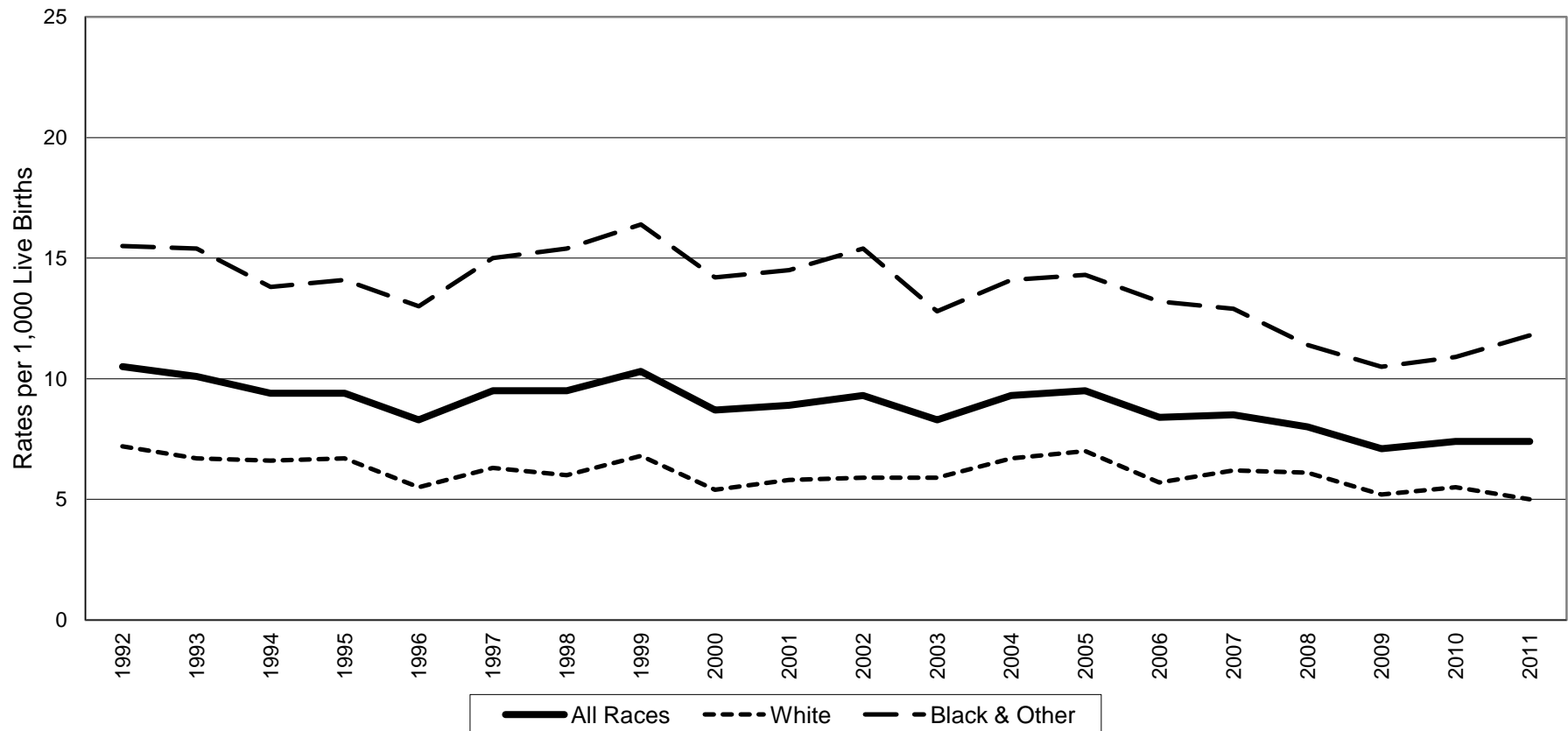
**South Carolina Department of Health and Environmental Control
Office of Public Health Statistics and Information Services
Division of Biostatistics
2600 Bull Street
Columbia, SC 29201**

**Phone: (803)898-3649
Fax: (803)898-3661**





South Carolina Infant Mortality Rates¹ by Race² Residence Data, 1992-2011



	1992	1993	1994	1995	1996	1997	1998	1999	2000	2001	2002	2003	2004	2005	2006	2007	2008	2009	2010	2011
All Races	10.5	10.1	9.4	9.4	8.3	9.5	9.5	10.3	8.7	8.9	9.3	8.3	9.3	9.5	8.4	8.5	8.0	7.1	7.4	7.4
White	7.2	6.7	6.6	6.7	5.5	6.3	6.0	6.8	5.4	5.8	5.9	5.9	6.7	7.0	5.7	6.2	6.1	5.2	5.5	5.0
Black & Other	15.5	15.4	13.8	14.1	13.0	15.0	15.4	16.4	14.2	14.5	15.4	12.8	14.1	14.3	13.2	12.9	11.4	10.5	10.9	11.8

¹Rates per 1,000 live births

²Race of mother

Table 1.
 Infant Mortality Rates¹ with 95% Confidence Intervals²
 South Carolina, 1992-2011
 (Residence Data)

Year	Number of Live Births	Number of Infant Deaths	Infant Mortality Rate	95% Confidence Intervals
1992	56,102	588	10.5	(9.7, 11.3)
1993	53,715	544	10.1	(9.3, 11.0)
1994	51,907	486	9.4	(8.5, 10.2)
1995	50,913	480	9.4	(8.6, 10.2)
1996	51,105	424	8.3	(7.5, 9.1)
1997	52,205	494	9.5	(8.7, 10.3)
1998	53,833	511	9.5	(8.7, 10.3)
1999	54,706	564	10.3	(9.4, 11.2)
2000	55,964	488	8.7	(7.9, 9.5)
2001	55,748	496	8.9	(8.1, 9.7)
2002	54,453	507	9.3	(8.5, 10.1)
2003	55,461	463	8.3	(7.5, 9.1)
2004	56,543	524	9.3	(8.5, 10.1)
2005	57,538	549	9.5	(8.7, 10.3)
2006	62,191	520	8.4	(7.6, 9.1)
2007	62,933	538	8.5	(7.8, 9.3)
2008	63,077	504	8.0	(7.3, 8.7)
2009	60,682	430	7.1	(6.4, 7.8)
2010	58,325	430	7.4	(6.7, 8.1)
2011	57,338	423	7.4	(6.7, 8.1)

Table 2.
 Infant Mortality Rates¹ with 95% Confidence Intervals²
 South Carolina
 1992-1996, 1997-2001, 2002-2006, 2007-2011
 (Residence Data)

Years	Number of Live Births	Number of Infant Deaths	Infant Mortality Rate	95% Confidence Intervals
1992-1996	263,742	2,522	9.6	(9.2, 9.9)
1997-2001	272,456	2,553	9.4	(9.0, 9.7)
2002-2006	286,186	2,563	9.0	(8.6, 9.3)
2007-2011	302,355	2,325	7.7	(7.4, 8.0)

¹Rates per 1,000 live births

² $r \pm 61.981 (r/n)^{1/2}$, where r = infant mortality rate and n = number of live births

Table 3.

Infant, Neonatal and Postneonatal Mortality and Mortality Rates¹ by Race²
 South Carolina
 2007, 2008, 2009, 2010 and 2011
 (Residence Data)

Infant Mortality									
	Total			White			Black & Other		
Year	Number of Live Birth	Number of Infant Death	Rate	Number of Live Birth	Number of Infant Death	Rate	Number of Live Birth	Number of Infant Death	Rate
2007	62,933*	538	8.5	40,641	250	6.2	22,259	288	12.9
2008	63,077*	504*	8.0	40,713	248	6.1	22,321	255	11.4
2009	60,682*	430	7.1	39,348	206	5.2	21,284	224	10.5
2010	58,325*	430	7.4	37,927	208	5.5	20,361	222	10.9
2011	57,338*	423	7.4	37,406	188	5.0	19,894	235	11.8

Neonatal Mortality (<28 days)									
	Total			White			Black & Other		
Year	Number of Live Birth	Number of Infant Death	Rate	Number of Live Birth	Number of Infant Death	Rate	Number of Live Birth	Number of Infant Death	Rate
2007	62,933*	357	5.7	40,641	165	4.1	22,259	192	8.6
2008	63,077*	311*	4.9	40,713	145	3.6	22,321	164	7.3
2009	60,682*	260	4.3	39,348	121	3.1	21,284	139	6.5
2010	58,325*	266	4.6	37,927	124	3.3	20,361	142	7.0
2011	57,338*	254	4.4	37,406	104	2.8	19,894	150	7.5

Postneonatal Mortality (28-364 days)									
	Total			White			Black & Other		
Year	Number of Live Birth	Number of Infant Death	Rate	Number of Live Birth	Number of Infant Death	Rate	Number of Live Birth	Number of Infant Death	Rate
2007	62,933*	181	2.9	40,641	85	2.1	22,259	96	4.3
2008	63,077*	194	3.1	40,713	103	2.5	22,321	91	4.1
2009	60,682*	170	2.8	39,348	85	2.2	21,284	85	4.0
2010	58,325*	164	2.8	37,927	84	2.2	20,361	80	3.9
2011	57,338*	169	2.9	37,406	84	2.2	19,894	85	4.3

¹Rates per 1,000 live births

²Race of mother

*Includes unknown race

Table 4.
Infant Mortality and Infant Mortality Rates¹
South Carolina and Each County, 2011, 2009-2011, 2006-2008
(Residence Data)

County of Residence	2011		2009-2011		2006-2008	
	Number	Rate	Number	Rate	Number	Rate
South Carolina	423	7.4	1,283	7.3	1,562	8.3
Abbeville	5	18.0	13	16.2	14	15.6
Aiken	8	4.3	32	5.5	46	7.5
Allendale	1	8.5	3	8.5	10	23.3
Anderson	19	8.5	51	7.5	53	7.2
Bamberg	2	12.2	5	9.4	4	6.7
Barnwell	2	6.6	5	5.7	8	8.1
Beaufort	10	4.9	25	3.9	47	6.7
Berkeley	16	6.3	43	5.6	63	8.2
Calhoun	2	12.3	3	6.3	5	9.5
Charleston	32	6.7	90	6.2	165	10.7
Cherokee	6	8.5	18	8.5	23	10.8
Chester	1	2.4	5	4.1	10	7.1
Chesterfield	8	15.7	29	18.3	20	11.1
Clarendon	2	6.0	4	3.6	8	6.5
Colleton	8	17.4	17	11.7	13	7.5
Darlington	8	10.1	30	12.4	23	8.9
Dillon	5	11.8	9	6.7	7	4.7
Dorchester	13	7.4	27	4.9	32	5.7
Edgefield	1	6.4	3	5.2	5	6.7
Fairfield	2	7.8	6	8.1	5	6.1
Florence	24	13.1	65	11.8	72	12.2
Georgetown	4	6.6	17	9.0	24	11.0
Greenville	40	6.6	123	6.6	129	6.6
Greenwood	8	9.0	27	9.7	32	10.7
Hampton	-	0	2	2.6	9	10.0
Horry	22	7.1	73	7.8	92	9.1
Jasper	3	8.8	6	5.7	10	8.4
Kershaw	4	5.6	11	4.9	20	7.9
Lancaster	6	6.9	21	7.9	20	7.0
Laurens	4	4.9	13	5.2	38	14.1
Lee	2	11.5	7	11.6	3	4.1
Lexington	22	6.8	59	5.8	71	6.9
McCormick	3	56.6	5	24.3	4	14.1
Marion	5	11.5	23	17.1	27	18.1
Marlboro	8	24.9	14	14.8	11	9.7
Newberry	2	4.5	6	4.2	10	6.2
Oconee	3	3.6	10	4.0	19	7.5
Orangeburg	10	8.4	38	10.1	73	17.5
Pickens	11	8.8	32	8.9	13	3.2
Richland	39	7.9	99	6.7	93	6.1
Saluda	3	11.9	10	13.2	7	8.4
Spartanburg	21	5.9	85	7.6	86	7.4
Sumter	10	6.6	38	8.2	36	7.1
Union	2	6.8	7	7.2	11	10.6
Williamsburg	5	14.0	14	12.3	24	17.3
York	11	3.9	59	6.7	67	7.5

¹Rates per 1,000 live births. Rates calculated with 20 or fewer deaths are unreliable and should be used cautiously.

Table 4-A.
White¹ Infant Mortality and Infant Mortality Rates²
South Carolina and Each County, 2011, 2009-2011, 2006-2008
(Residence Data)

County of Residence	2011		2009-2011		2006-2008	
	Number	Rate	Number	Rate	Number	Rate
South Carolina	188	5.0	602	5.2	725	6.0
Abbeville	3	16.5	5	9.6	4	6.8
Aiken	4	3.2	14	3.6	24	5.8
Allendale	-	0	-	0	1	13.5
Anderson	11	6.3	30	5.6	28	4.9
Bamberg	1	18.5	1	5.8	1	6.0
Barnwell	-	0	1	2.4	1	2.4
Beaufort	4	2.7	13	2.8	22	4.3
Berkeley	7	3.7	26	4.7	32	5.9
Calhoun	-	0	1	3.9	2	7.6
Charleston	14	4.6	38	4.2	66	7.1
Cherokee	4	7.5	14	8.8	14	9.1
Chester	-	0	3	4.5	4	5.6
Chesterfield	2	7.3	14	15.3	8	7.6
Clarendon	-	0	1	2.1	2	4.0
Colleton	3	12.8	6	7.8	5	5.5
Darlington	2	5.3	13	10.9	7	5.6
Dillon	1	6.1	2	3.7	2	3.0
Dorchester	5	4.1	15	4.0	15	3.8
Edgefield	-	0	-	0	1	2.5
Fairfield	1	11.9	4	17.4	1	4.2
Florence	11	12.2	23	8.6	21	7.4
Georgetown	1	3.1	3	2.9	9	7.6
Greenville	21	4.6	61	4.3	72	4.8
Greenwood	4	7.3	13	7.6	17	9.1
Hampton	-	0	-	0	1	2.9
Horry	15	6.1	45	6.1	73	9.2
Jasper	1	5.6	2	3.5	5	7.1
Kershaw	1	2.0	7	4.4	13	7.2
Lancaster	2	3.2	11	5.9	7	3.6
Laurens	2	3.5	8	4.6	21	11.3
Lee	-	0	1	6.8	-	0
Lexington	17	6.5	38	4.7	48	5.8
McCormick	-	0	-	0	2	22.5
Marion	1	6.8	5	11.5	7	14.0
Marlboro	2	16.7	5	15.2	4	9.2
Newberry	-	0	3	3.4	7	6.7
Oconee	2	2.7	9	4.0	18	7.9
Orangeburg	3	8.5	5	4.5	16	12.9
Pickens	10	8.9	28	8.6	13	3.5
Richland	7	3.3	21	3.3	18	2.8
Saluda	3	15.5	6	10.6	6	9.8
Spartanburg	14	5.4	55	6.8	46	5.4
Sumter	3	4.2	14	6.4	8	3.3
Union	1	5.2	4	6.4	9	13.6
Williamsburg	-	0	-	0	2	5.1
York	5	2.4	33	5.1	42	6.3

¹Race of mother

²Rates per 1,000 live births. Rates calculated with 20 or fewer deaths are unreliable and should be used cautiously.

Table 4-B.
Black and Other¹ Infant Mortality and Infant Mortality Rates²
South Carolina and Each County, 2011, 2009-2011, 2006-2008
(Residence Data)

County of Residence	2011		2009-2011		2006-2008	
	Number	Rate	Number	Rate	Number	Rate
South Carolina	235	11.8	681	11.1	836	12.5
Abbeville	2	20.8	8	28.8	10	32.5
Aiken	4	6.6	18	9.4	22	11.3
Allendale	1	10.4	3	10.2	9	25.4
Anderson	8	16.3	21	14.4	25	16.1
Bamberg	1	9.1	4	11.1	3	7.0
Barnwell	2	12.7	4	8.7	7	12.5
Beaufort	6	10.9	12	6.9	25	12.9
Berkeley	9	13.4	17	8.2	31	13.7
Calhoun	2	29.4	2	9.1	3	11.4
Charleston	18	10.5	52	9.5	99	16.1
Cherokee	2	11.5	4	7.5	9	15.3
Chester	1	5.7	2	3.6	6	8.6
Chesterfield	6	25.5	15	22.6	12	16.0
Clarendon	2	10.9	3	4.8	6	8.3
Colleton	5	22.1	11	16.1	8	9.8
Darlington	6	14.6	17	14.0	16	12.0
Dillon	4	15.4	7	8.8	5	5.9
Dorchester	8	14.7	12	7.2	17	10.2
Edgefield	1	12.0	3	10.2	4	11.8
Fairfield	1	5.8	2	3.9	4	6.8
Florence	13	14.0	42	14.7	51	16.6
Georgetown	3	10.6	14	15.9	15	15.1
Greenville	19	13.3	62	14.1	57	12.2
Greenwood	4	11.6	14	13.2	15	13.5
Hampton	-	0	2	4.6	8	14.3
Horry	7	10.9	28	14.8	19	9.0
Jasper	2	12.3	4	8.5	5	10.4
Kershaw	3	15.2	4	6.2	7	9.4
Lancaster	4	16.3	10	12.7	13	14.2
Laurens	2	8.3	5	6.3	17	20.4
Lee	2	15.5	6	13.2	3	5.4
Lexington	5	7.9	21	10.5	23	11.8
McCormick	3	93.8	5	37.0	2	10.3
Marion	4	13.9	18	19.7	20	20.1
Marlboro	6	29.9	9	14.6	7	10.0
Newberry	2	11.9	3	5.6	3	5.2
Oconee	1	11.0	1	4.4	1	4.2
Orangeburg	7	8.3	33	12.4	56	19.0
Pickens	1	8.3	4	11.8	-	0
Richland	32	11.4	78	9.3	75	8.5
Saluda	-	0	4	20.6	1	4.5
Spartanburg	7	7.3	30	9.9	40	12.6
Sumter	7	8.8	24	9.8	28	10.4
Union	1	9.7	3	8.6	2	5.3
Williamsburg	5	20.2	14	16.9	22	22.0
York	6	7.7	26	11.1	25	10.9

¹Race of mother

²Rates per 1,000 live births. Rates calculated with 20 or fewer deaths are unreliable and should be used cautiously.

Table 5.

Infant, Neonatal and Postneonatal Mortality Rates¹ by Race²
 and Percent Changes from 2009 to 2010
 South Carolina
 (Residence Data)

Infant Mortality			
Year	Total	White	Black & Other
2010	7.4	5.5	10.9
2011	7.4	5.0	11.8
Percent Change	0.0%	-9.1%	8.3%

Neonatal Mortality			
Year	Total	White	Black & Other
2010	4.6	3.3	7.0
2011	4.4	2.8	7.5
Percent Change	-4.3%	-15.2%	7.1%

Postneonatal Mortality			
Year	Total	White	Black & Other
2010	2.8	2.2	3.9
2011	2.9	2.2	4.3
Percent Change	3.6%	0.0%	10.3%

¹Rates per 1,000 live births

²Race of mother

Table 6.
Neonatal Mortality and Neonatal Mortality Rates¹
South Carolina and Each County, 2011, 2009-2011, 2006-2008
(Residence Data)

County of Residence	2011		2009-2011		2006-2008	
	Number	Rate	Number	Rate	Number	Rate
South Carolina	254	4.4	780	4.4	1,009	5.4
Abbeville	4	14.4	9	11.2	8	8.9
Aiken	5	2.7	15	2.6	31	5.1
Allendale	1	8.5	2	5.7	5	11.7
Anderson	10	4.5	36	5.3	32	4.4
Bamberg	2	12.2	4	7.5	3	5.0
Barnwell	1	3.3	3	3.4	7	7.1
Beaufort	7	3.4	18	2.8	36	5.1
Berkeley	8	3.1	23	3.0	39	5.1
Calhoun	2	12.3	2	4.2	5	9.5
Charleston	18	3.8	45	3.1	119	7.7
Cherokee	3	4.2	9	4.3	12	5.6
Chester	1	2.4	3	2.5	6	4.3
Chesterfield	4	7.8	20	12.6	16	8.9
Clarendon	1	3.0	3	2.7	5	4.1
Colleton	7	15.2	11	7.6	9	5.2
Darlington	5	6.3	17	7.0	15	5.8
Dillon	4	9.5	5	3.7	3	2.0
Dorchester	6	3.4	12	2.2	24	4.3
Edgefield	1	6.4	3	5.2	4	5.4
Fairfield	1	3.9	4	5.4	4	4.8
Florence	13	7.1	38	6.9	52	8.8
Georgetown	3	5.0	12	6.3	16	7.3
Greenville	19	3.1	69	3.7	89	4.6
Greenwood	7	7.8	20	7.2	21	7.0
Hampton	-	0	2	2.6	8	8.9
Horry	11	3.5	46	4.9	66	6.5
Jasper	2	5.9	4	3.8	7	5.9
Kershaw	1	1.4	5	2.2	14	5.5
Lancaster	3	3.5	14	5.3	12	4.2
Laurens	3	3.7	8	3.2	24	8.9
Lee	2	11.5	4	6.6	2	2.7
Lexington	14	4.3	32	3.1	41	4.0
McCormick	3	56.6	5	24.3	3	10.6
Marion	3	6.9	17	12.6	17	11.4
Marlboro	8	24.9	14	14.8	5	4.4
Newberry	1	2.3	3	2.1	4	2.5
Oconee	2	2.4	5	2.0	14	5.5
Orangeburg	6	5.0	23	6.1	49	11.7
Pickens	10	8.0	23	6.4	8	2.0
Richland	26	5.3	64	4.3	48	3.1
Saluda	2	7.9	7	9.2	3	3.6
Spartanburg	7	2.0	48	4.3	51	4.4
Sumter	4	2.6	22	4.7	17	3.3
Union	1	3.4	2	2.0	6	5.8
Williamsburg	5	14.0	11	9.7	13	9.4
York	7	2.5	37	4.2	36	4.0

¹Rates per 1,000 live births. Rates calculated with 20 or fewer deaths are unreliable and should be used cautiously.

Table 6-A.
White¹ Neonatal Mortality and Neonatal Mortality Rates²
South Carolina and Each County, 2011, 2009-2011, 2006-2008
(Residence Data)

County of Residence	2011		2009-2011		2006-2008	
	Number	Rate	Number	Rate	Number	Rate
South Carolina	104	2.8	349	3.0	448	3.7
Abbeville	2	11.0	3	5.7	2	3.4
Aiken	3	2.4	6	1.5	14	3.4
Allendale	-	0	-	0	1	13.5
Anderson	6	3.4	21	3.9	15	2.6
Bamberg	1	18.5	1	5.8	-	0
Barnwell	-	0	1	2.4	1	2.4
Beaufort	3	2.0	9	1.9	17	3.3
Berkeley	2	1.1	13	2.3	18	3.3
Calhoun	-	0	-	0	2	7.6
Charleston	7	2.3	17	1.9	45	4.8
Cherokee	2	3.7	6	3.8	7	4.5
Chester	-	0	1	1.5	2	2.8
Chesterfield	-	0	8	8.7	5	4.8
Clarendon	-	0	1	2.1	1	2.0
Colleton	3	12.8	4	5.2	5	5.5
Darlington	2	5.3	7	5.8	4	3.2
Dillon	-	0	-	0	2	3.0
Dorchester	1	0.8	6	1.6	11	2.8
Edgefield	-	0	-	0	-	0
Fairfield	1	11.9	3	13.0	1	4.2
Florence	4	4.4	12	4.5	13	4.6
Georgetown	1	3.1	3	2.9	5	4.2
Greenville	13	2.8	39	2.8	48	3.2
Greenwood	3	5.5	10	5.9	9	4.8
Hampton	-	0	-	0	-	0
Horry	8	3.3	28	3.8	54	6.8
Jasper	1	5.6	2	3.5	4	5.6
Kershaw	-	0	3	1.9	9	5.0
Lancaster	-	0	7	3.8	4	2.1
Laurens	2	3.5	4	2.3	15	8.1
Lee	-	0	-	0	-	0
Lexington	10	3.8	20	2.5	29	3.5
McCormick	-	0	-	0	1	11.2
Marion	-	0	2	4.6	3	6.0
Marlboro	2	16.7	5	15.2	2	4.6
Newberry	-	0	2	2.3	4	3.8
Oconee	1	1.4	4	1.8	14	6.1
Orangeburg	1	2.8	2	1.8	9	7.3
Pickens	9	8.0	19	5.8	8	2.1
Richland	5	2.4	16	2.5	9	1.4
Saluda	2	10.3	4	7.1	3	4.9
Spartanburg	3	1.2	28	3.4	24	2.8
Sumter	1	1.4	8	3.7	4	1.7
Union	1	5.2	2	3.2	4	6.0
Williamsburg	-	0	-	0	-	0
York	4	2.0	21	3.3	20	3.0

¹Race of mother

²Rates per 1,000 live births. Rates calculated with 20 or fewer deaths are unreliable and should be used cautiously.

Table 6-B.

Black and Other¹ Neonatal Mortality and Neonatal Mortality Rates²
 South Carolina and Each County, 2011, 2009-2011, 2006-2008
 (Residence Data)

County of Residence	2011		2009-2011		2006-2008	
	Number	Rate	Number	Rate	Number	Rate
South Carolina	150	7.5	431	7.0	560	8.4
Abbeville	2	20.8	6	21.6	6	19.5
Aiken	2	3.3	9	4.7	17	8.7
Allendale	1	10.4	2	6.8	4	11.3
Anderson	4	8.1	15	10.3	17	11.0
Bamberg	1	9.1	3	8.4	3	7.0
Barnwell	1	6.4	2	4.4	6	10.7
Beaufort	4	7.2	9	5.2	19	9.8
Berkeley	6	8.9	10	4.8	21	9.3
Calhoun	2	29.4	2	9.1	3	11.4
Charleston	11	6.4	28	5.1	74	12.0
Cherokee	1	5.7	3	5.7	5	8.5
Chester	1	5.7	2	3.6	4	5.7
Chesterfield	4	17.0	12	18.0	11	14.6
Clarendon	1	5.5	2	3.2	4	5.5
Colleton	4	17.7	7	10.2	4	4.9
Darlington	3	7.3	10	8.2	11	8.3
Dillon	4	15.4	5	6.3	1	1.2
Dorchester	5	9.2	6	3.6	13	7.8
Edgefield	1	12.0	3	10.2	4	11.8
Fairfield	-	0	1	1.9	3	5.1
Florence	9	9.7	26	9.1	39	12.7
Georgetown	2	7.1	9	10.2	11	11.1
Greenville	6	4.2	30	6.8	41	8.8
Greenwood	4	11.6	10	9.4	12	10.8
Hampton	-	0	2	4.6	8	14.3
Horry	3	4.7	18	9.5	12	5.7
Jasper	1	6.1	2	4.2	3	6.2
Kershaw	1	5.1	2	3.1	5	6.7
Lancaster	3	12.2	7	8.9	8	8.7
Laurens	1	4.2	4	5.1	9	10.8
Lee	2	15.5	4	8.8	2	3.6
Lexington	4	6.3	12	6.0	12	6.1
McCormick	3	93.8	5	37.0	2	10.3
Marion	3	10.5	15	16.4	14	14.1
Marlboro	6	29.9	9	14.6	3	4.3
Newberry	1	6.0	1	1.9	-	0
Oconee	1	11.0	1	4.4	-	0
Orangeburg	5	5.9	21	7.9	39	13.3
Pickens	1	8.3	4	11.8	-	0.0
Richland	21	7.5	48	5.7	39	4.4
Saluda	-	0	3	15.5	-	0
Spartanburg	4	4.2	20	6.6	27	8.5
Sumter	3	3.8	14	5.7	13	4.8
Union	-	0	-	0	2	5.3
Williamsburg	5	20.2	11	13.3	13	13.0
York	3	3.9	16	6.9	16	7.0

¹Race of mother

²Rates per 1,000 live births. Rates calculated with 20 or fewer deaths are unreliable and should be used cautiously.

Table 7.
Postneonatal Mortality and Postneonatal Mortality Rates¹
South Carolina and Each County, 2011, 2009-2011, 2006-2008
(Residence Data)

County of Residence	2011		2009-2011		2006-2008	
	Number	Rate	Number	Rate	Number	Rate
South Carolina	169	2.9	503	2.9	553	2.9
Abbeville	1	3.6	4	5.0	6	6.7
Aiken	3	1.6	17	2.9	15	2.4
Allendale	-	0	1	2.8	5	11.7
Anderson	9	4.0	15	2.2	21	2.9
Bamberg	-	0	1	1.9	1	1.7
Barnwell	1	3.3	2	2.3	1	1.0
Beaufort	3	1.5	7	1.1	11	1.6
Berkeley	8	3.1	20	2.6	24	3.1
Calhoun	-	0	1	2.1	-	0
Charleston	14	2.9	45	3.1	46	3.0
Cherokee	3	4.2	9	4.3	11	5.2
Chester	-	0	2	1.6	4	2.8
Chesterfield	4	7.8	9	5.7	4	2.2
Clarendon	1	3.0	1	0.9	3	2.4
Colleton	1	2.2	6	4.1	4	2.3
Darlington	3	3.8	13	5.4	8	3.1
Dillon	1	2.4	4	3.0	4	2.7
Dorchester	7	4.0	15	2.7	8	1.4
Edgefield	-	0	-	0	1	1.3
Fairfield	1	3.9	2	2.7	1	1.2
Florence	11	6.0	27	4.9	20	3.4
Georgetown	1	1.7	5	2.6	8	3.7
Greenville	21	3.5	54	2.9	40	2.0
Greenwood	1	1.1	7	2.5	11	3.7
Hampton	-	0	-	0	1	1.1
Horry	11	3.5	27	2.9	26	2.6
Jasper	1	2.9	2	1.9	3	2.5
Kershaw	3	4.2	6	2.7	6	2.4
Lancaster	3	3.5	7	2.6	8	2.8
Laurens	1	1.2	5	2.0	14	5.2
Lee	-	0	3	5.0	1	1.4
Lexington	8	2.5	27	2.7	30	2.9
McCormick	-	0	-	0	1	3.5
Marion	2	4.6	6	4.5	10	6.7
Marlboro	-	0	-	0	6	5.3
Newberry	1	2.3	3	2.1	6	3.7
Oconee	1	1.2	5	2.0	5	2.0
Orangeburg	4	3.4	15	4.0	24	5.7
Pickens	1	0.8	9	2.5	5	1.2
Richland	13	2.6	35	2.4	45	2.9
Saluda	1	4.0	3	3.9	4	4.8
Spartanburg	14	4.0	37	3.3	35	3.0
Sumter	6	4.0	16	3.4	19	3.7
Union	1	3.4	5	5.1	5	4.8
Williamsburg	-	0	3	2.6	11	7.9
York	4	1.4	22	2.5	31	3.4

¹Rates per 1,000 live births. Rates calculated with 20 or fewer deaths are unreliable and should be used cautiously.

Table 7-A.

White¹ Postneonatal Mortality and Postneonatal Mortality Rates²
 South Carolina and Each County, 2011, 2009-2011, 2006-2008
 (Residence Data)

County of Residence	2011		2009-2011		2006-2008	
	Number	Rate	Number	Rate	Number	Rate
South Carolina	84	2.2	253	2.2	277	2.3
Abbeville	1	5.5	2	3.8	2	3.4
Aiken	1	0.8	8	2.1	10	2.4
Allendale	-	0	-	0	-	0
Anderson	5	2.9	9	1.7	13	2.3
Bamberg	-	0	-	0	1	6.0
Barnwell	-	0	-	0	-	0
Beaufort	1	0.7	4	0.9	5	1.0
Berkeley	5	2.7	13	2.3	14	2.6
Calhoun	-	0	1	3.9	-	0
Charleston	7	2.3	21	2.3	21	2.3
Cherokee	2	3.7	8	5.1	7	4.5
Chester	-	0	2	3.0	2	2.8
Chesterfield	2	7.3	6	6.6	3	2.9
Clarendon	-	0	-	0	1	2.0
Colleton	-	0	2	2.6	-	0
Darlington	-	0	6	5.0	3	2.4
Dillon	1	6.1	2	3.7	-	0
Dorchester	4	3.3	9	2.4	4	1.0
Edgefield	-	0	-	0	1	2.5
Fairfield	-	0	1	4.3	-	0
Florence	7	7.7	11	4.1	8	2.8
Georgetown	-	0	-	0.0	4	3.4
Greenville	8	1.7	22	1.6	24	1.6
Greenwood	1	1.8	3	1.8	8	4.3
Hampton	-	0	-	0	1	2.9
Horry	7	2.8	17	2.3	19	2.4
Jasper	-	0	-	0	1	1.4
Kershaw	1	2.0	4	2.5	4	2.2
Lancaster	2	3.2	4	2.2	3	1.6
Laurens	-	0	4	2.3	6	3.2
Lee	-	0	1	6.8	-	0
Lexington	7	2.7	18	2.2	19	2.3
McCormick	-	0	-	0	1	11.2
Marion	1	6.8	3	6.9	4	8.0
Marlboro	-	0	-	0	2	4.6
Newberry	-	0	1	1.1	3	2.9
Oconee	1	1.4	5	2.2	4	1.7
Orangeburg	2	5.7	3	2.7	7	5.7
Pickens	1	0.9	9	2.8	5	1.3
Richland	2	1.0	5	0.8	9	1.4
Saluda	1	5.2	2	3.5	3	4.9
Spartanburg	11	4.3	27	3.3	22	2.6
Sumter	2	2.8	6	2.7	4	1.7
Union	-	0	2	3.2	5	7.6
Williamsburg	-	0	-	0	2	5.1
York	1	0.5	12	1.9	22	3.3

¹Race of mother

²Rates per 1,000 live births. Rates calculated with 20 or fewer deaths are unreliable and should be used cautiously.

Table 7-B.

Black and Other¹ Postneonatal Mortality and Postneonatal Mortality Rates²
 South Carolina and Each County, 2011, 2009-2011, 2006-2008
 (Residence Data)

County of Residence	2011		2009-2011		2006-2008	
	Number	Rate	Number	Rate	Number	Rate
South Carolina	85	4.3	250	4.1	276	4.1
Abbeville	-	0	2	7.2	4	13.0
Aiken	2	3.3	9	4.7	5	2.6
Allendale	-	0	1	3.4	5	14.1
Anderson	4	8.1	6	4.1	8	5.2
Bamberg	-	0	1	2.8	-	0
Barnwell	1	6.4	2	4.4	1	1.8
Beaufort	2	3.6	3	1.7	6	3.1
Berkeley	3	4.5	7	3.4	10	4.4
Calhoun	-	0	-	0	-	0
Charleston	7	4.1	24	4.4	25	4.1
Cherokee	1	5.7	1	1.9	4	6.8
Chester	-	0	-	0	2	2.9
Chesterfield	2	8.5	3	4.5	1	1.3
Clarendon	1	5.5	1	1.6	2	2.8
Colleton	1	4.4	4	5.9	4	4.9
Darlington	3	7.3	7	5.7	5	3.8
Dillon	-	0	2	2.5	4	4.7
Dorchester	3	5.5	6	3.6	4	2.4
Edgefield	-	0	-	0	-	0
Fairfield	1	5.8	1	1.9	1	1.7
Florence	4	4.3	16	5.6	12	3.9
Georgetown	1	3.5	5	5.7	4	4.0
Greenville	13	9.1	32	7.3	16	3.4
Greenwood	-	0	4	3.8	3	2.7
Hampton	-	0	-	0	-	0
Horry	4	6.2	10	5.3	7	3.3
Jasper	1	6.1	2	4.2	2	4.1
Kershaw	2	10.1	2	3.1	2	2.7
Lancaster	1	4.1	3	3.8	5	5.5
Laurens	1	4.2	1	1.3	8	9.6
Lee	-	0	2	4.4	1	1.8
Lexington	1	1.6	9	4.5	11	5.6
McCormick	-	0	-	0	-	0
Marion	1	3.5	3	3.3	6	6.0
Marlboro	-	0	-	0	4	5.7
Newberry	1	6.0	2	3.7	3	5.2
Oconee	-	0	-	0	1	4.2
Orangeburg	2	2.4	12	4.5	17	5.8
Pickens	-	0	-	0	-	0
Richland	11	3.9	30	3.6	36	4.1
Saluda	-	0	1	5.2	1	4.5
Spartanburg	3	3.1	10	3.3	13	4.1
Sumter	4	5.0	10	4.1	15	5.6
Union	1	9.7	3	8.6	-	0
Williamsburg	-	0	3	3.6	9	9.0
York	3	3.9	10	4.3	9	3.9

¹Race of mother²Rates per 1,000 live births. Rates calculated with 20 or fewer deaths are unreliable and should be used cautiously.

Table 8.
Leading Causes of Infant Death by Age at Death
South Carolina, 2011
(Residence Data)

Cause of Infant Death (ICD-10 Codes)	Total	Under 1 Day	1-6 Days	7-27 Days	Neonatal (<28 days)	Post-Neonatal (28-364 days)
Total Infant Deaths	423	164	43	47	254	169
Congenital malformations, deformations, etc. (Q00-Q99)	76	20	16	9	45	31
Disorders related to short gestation and low birthweight, NEC (P07)	63	59	1	-	60	3
Sudden infant death syndrome (R95)	45	-	-	2	2	43
Accidents (V01-X59, Y85-Y86)	30	-	-	3	3	27
Fetus and newborn affected by maternal complications of pregnancy (P01)	29	28	1	-	29	-
Newborn affected by complication of placenta, ect. (P02)	20	19	1	-	-	-
Diseases of circulatory system (I00-I99)	17	1	4	1	6	11
Respiratory distress of newborn (P22)	14	8	5	1	14	-
Bacterial sepsis of newborn (P36)	10	1	4	5	10	-
Necrotizing enterocolitis of newborn (P77)	9	-	-	9	9	-
All other causes	110	28	11	17	56	54

Table 8a.
Leading Causes of White¹ Infant Death by Age at Death
South Carolina, 2011
(Residence Data)

Cause of Infant Death (ICD-10 Codes)	Total	Under 1 Day	1-6 Days	7-27 Days	Neonatal (<28 days)	Post-Neonatal (28-364 days)
Total White Infant Deaths	182	62	19	23	104	78
Congenital malformations, deformations, etc. (Q00-Q99)	39	8	10	5	23	16
Disorders related to short gestation and low birthweight, NEC (P07)	25	23	-	-	23	2
Sudden infant death syndrome (R95)	22	-	-	1	1	21
Accidents (V01-X59, Y85-Y86)	14	-	-	1	1	13
Diseases of circulatory system (I00-I99)	8	1	1	1	3	5
Newborn affected by complication of placenta, etc. (P02)	8	8	-	-	8	-
Fetus and newborn affected by maternal complications of pregnancy (P01)	5	5	-	-	5	-
Intrauterine hypoxia and birth asphyxia (P20-P21)	5	2	3	-	5	-
Neonatal hemorrhage (P50-P52, P54)	5	-	-	4	4	1
Necrotizing enterocolitis of newborn (P77)	5	-	-	5	5	-
All other causes	46	15	5	6	26	20

¹ Race of child

Table 8b.
 Leading Causes of Black and Other¹ Infant Death by Age at Death
 South Carolina, 2011
 (Residence Data)

Cause of Infant Death (ICD-10 Codes)	Total	Under 1 Day	1-6 Days	7-27 Days	Neonatal (<28 days)	Post-Neonatal (28-364 days)
Total Black and Other Infant Deaths	241	102	24	24	150	91
Disorders related to short gestation and low birthweight, NEC (P07)	38	36	1	-	37	1
Congenital malformations, deformations, etc. (Q00-Q99)	37	12	6	4	22	15
Fetus and newborn affected by maternal complications of pregnancy (P01)	24	23	1	-	24	-
Sudden infant death syndrome (R95)	23	-	-	1	1	22
Accidents (V01-X59, Y85-Y86)	16	-	-	2	2	14
Newborn affected by complication of placenta, etc. (P02)	12	11	1	-	12	-
Respiratory distress of newborn (P22)	11	6	4	1	11	-
Diseases of circulatory system (I00-I99)	9	-	3	-	3	6
Bacterial sepsis of newborn (P36)	7	-	4	3	7	-
Atelectasis (P28.0-P28.1)	5	4	1	-	5	-
Assault (Homicide) (X85-Y09, Y87.1)	5	-	-	-	-	5
All other causes	54	10	3	13	26	28

¹ Race of child

Table 8c.
 Percent Changes of Leading Causes of Infant Death
 from 2010 to 2011, South Carolina

Cause of Infant Death Ranked by 2011 Data (ICD-10 Codes)	2010	2011	% Change
Total Infant Deaths	430	423	-1.6%
Congenital malformations, deformations, etc. (Q00-Q99)	75	76	1.3%
Disorders related to short gestation and low birthweight, NEC (P07)	62	63	1.6%
Sudden infant death syndrome (R95)	49	45	-8.2%
Accidents (V01-X59, Y85-Y86)	32	30	-6.3%
Fetus and newborn affected by maternal complications of pregnancy (P01)	19	29	52.6%
Newborn affected by complication of placenta, etc. (P02)	14	20	42.9%
Diseases of circulatory system (I00-I99)	16	17	6.3%
Respiratory distress of newborn (P22)	4	14	250.0%
Bacterial sepsis of newborn (P36)	14	10	-28.6%
Necrotizing enterocolitis of newborn (P77)	9	9	0.0%
All other causes	136	110	-19.1%

Table 9.

Comparison of Characteristics for All Live Births, by Race¹
 Z-tests for differences in proportions³
 South Carolina, 2010 to 2011
 (Residence Data)

	2010		2011		Z-TEST	P-VALUE
	Percent	Number	Percent	Number		

MOTHER < 18 YEARS						
TOTAL ²	3.64	2,124	3.07	1,761	-5.3834	0.0000
White	2.79	1,057	2.41	902	-3.2383	0.0012
Black & Other	5.23	1,065	4.31	857	-4.3410	0.0000

MARITAL STATUS: UNMARRIED						
TOTAL ²	46.94	27,379	46.92	26,903	-0.0754	0.9399
White	32.36	12,272	32.72	12,240	1.0695	0.2849
Black & Other	74.15	15,098	73.63	14,647	-1.2021	0.2293

< 5 PRENATAL CARE VISITS						
TOTAL ²	5.82	3,392	6.03	3,459	1.5628	0.1181
White	5.03	1,906	5.17	1,933	0.8872	0.3750
Black & Other	7.28	1,482	7.65	1,522	1.4197	0.1557

PRENATAL CARE BEGAN FIRST TRIMESTER						
TOTAL ²	72.08	42,039	71.67	41,094	-1.5408	0.1234
White	75.82	28,757	75.26	28,150	-1.8091	0.0704
Black & Other	65.15	13,266	64.97	12,925	-0.3885	0.6977

VERY LOW BIRTHWEIGHT						
TOTAL ²	1.89	1,104	1.86	1,064	-0.4661	0.6411
White	1.19	452	1.26	470	0.8078	0.4192
Black & Other	3.20	651	2.99	594	-1.2253	0.2205

LOW BIRTHWEIGHT						
TOTAL ²	9.91	5,782	9.86	5,654	-0.2996	0.7645
White	7.42	2,816	7.50	2,806	0.4004	0.6888
Black & Other	14.55	2,963	14.31	2,846	-0.7037	0.4816

¹Race of mother

²Includes unknown races

³Proportions are expressed as percentages

Table 9. (continued)

Comparison of Characteristics for All Live Births, by Race¹
 Z-tests for differences in proportions³
 South Carolina, 2010 to 2011
 (Residence Data)

	2010		2011		Z-TEST	P-VALUE
	Percent	Number	Percent	Number		

PREMATURE BIRTHS (< 37 WEEKS)						
TOTAL ²	11.50	6,705	11.48	6,584	-0.0701	0.9441
White	9.90	3,753	10.27	3,841	1.7005	0.0890
Black & Other	14.48	2,948	13.76	2,738	-2.0614	0.0393

VERY PREMATURE BIRTHS (< 32 WEEKS)						
TOTAL ²	2.02	1,180	2.03	1,163	0.0625	0.9502
White	1.29	491	1.47	548	2.0052	0.0449
Black & Other	3.37	687	3.09	614	-1.6321	0.1027

PREMATURE 32-36 WEEKS BIRTHS						
TOTAL ²	9.47	5,525	9.45	5,421	-0.1064	0.9153
White	8.60	3,262	8.80	3,293	0.9868	0.3238
Black & Other	11.10	2,261	10.68	2,124	-1.3780	0.1682

KOTELCHUCK INDEX: ADEQUATE, ADEQUATE PLUS						
TOTAL ²	73.90	43,102	73.86	42,349	-0.1594	0.8734
White	76.62	29,058	76.24	28,519	-1.2087	0.2268
Black & Other	68.91	14,030	69.42	13,811	1.1223	0.2617

KOTELCHUCK INDEX: INTERMEDIATE						
TOTAL ²	6.47	3,772	6.81	3,903	2.3213	0.0203
White	6.63	2,514	7.07	2,643	2.3758	0.0175
Black & Other	6.17	1,256	6.32	1,257	0.6213	0.5344

KOTELCHUCK INDEX: INADEQUATE						
TOTAL ²	18.45	10,760	18.52	10,619	0.3139	0.7536
White	15.63	5,928	15.88	5,941	0.9509	0.3416
Black & Other	23.68	4,822	23.45	4,666	-0.5394	0.5896

HISPANIC MOTHER						
TOTAL ²	8.63	5,034	8.42	4,826	-1.3042	0.1922
White	12.63	4,791	12.13	4,538	-2.0848	0.0371
Black & Other	1.19	243	1.45	288	2.2351	0.0254

¹Race of mother

²Includes unknown races

³Proportions are expressed as percentages

Table 9-A.

Comparison of Characteristics of Infants who Died, by Race¹
 Z-tests for differences in proportions³
 South Carolina, 2010 to 2011
 (Residence Data)

	2010		2011		Z-TEST	P-VALUE
	Percent	Number	Percent	Number		
MOTHER < 18 YEARS						
TOTAL ²	5.14	22	4.96	21	-0.1013	0.9193
White	6.25	13	5.85	11	-0.1661	0.8680
Black & Other	4.09	9	4.26	10	0.1077	0.9142
MARITAL STATUS: UNMARRIED						
TOTAL ²	63.08	270	64.78	274	0.6030	0.5465
White	51.92	108	48.94	92	-0.5937	0.5527
Black & Other	73.64	162	77.45	182	1.1080	0.2679
< 5 PRENATAL CARE VISITS						
TOTAL ²	30.61	131	27.66	117	-0.9022	0.3670
White	26.44	55	27.13	51	0.1538	0.8777
Black & Other	34.55	76	28.09	66	-1.4197	0.1557
PRENATAL CARE BEGAN FIRST TRIMESTER						
TOTAL ²	57.71	247	57.21	242	-0.0683	0.9455
White	59.62	124	53.19	100	-1.2879	0.1978
Black & Other	55.91	123	60.43	142	1.0867	0.2772
VERY LOW BIRTHWEIGHT						
TOTAL ²	50.23	215	53.90	228	1.1401	0.2543
White	44.23	92	44.15	83	-0.0164	0.9869
Black & Other	55.91	123	61.70	145	1.3661	0.1719
LOW BIRTHWEIGHT						
TOTAL ²	67.06	287	67.38	285	0.1963	0.8444
White	59.62	124	62.23	117	0.5332	0.5939
Black & Other	74.09	163	71.49	168	-0.4624	0.6438

¹Race of mother

²Includes unknown races

³Proportions are expressed as percentages

Table 9-A. (continued)

Comparison of Characteristics of Infants who Died, by Race¹
 Z-tests for differences in proportions³
 South Carolina, 2010 to 2011
 (Residence Data)

	2010		2011		Z-TEST	P-VALUE
	Percent	Number	Percent	Number		

PREMATURE BIRTHS (< 37 WEEKS)						
TOTAL ²	67.29	288	65.25	276	-0.5333	0.5938
White	59.13	123	61.70	116	0.5216	0.6020
Black & Other	75.00	165	68.09	160	-1.4709	0.1413

VERY PREMATURE BIRTHS (< 32 WEEKS)						
TOTAL ²	50.93	218	53.66	227	0.8672	0.3858
White	44.71	93	44.68	84	-0.0061	0.9951
Black & Other	56.82	125	60.85	143	0.9860	0.3241

PREMATURE 32-36 WEEKS BIRTHS						
TOTAL ²	16.36	70	11.58	49	-1.9788	0.0478
White	14.42	30	17.02	32	0.7105	0.4774
Black & Other	18.18	40	7.23	17	-3.4872	0.0005

KOTELCHUCK INDEX: ADEQUATE, ADEQUATE PLUS						
TOTAL ²	64.49	276	64.30	272	0.0355	0.9717
White	67.79	141	61.70	116	-1.2672	0.2051
Black & Other	61.36	135	66.38	156	1.2379	0.2157

KOTELCHUCK INDEX: INTERMEDIATE						
TOTAL ²	4.44	19	1.42	6	-2.5974	0.0094
White	3.85	8	2.13	4	-0.9962	0.3191
Black & Other	5.00	11	0.85	2	-2.6376	0.0084

KOTELCHUCK INDEX: INADEQUATE						
TOTAL ²	27.57	118	29.08	123	0.5307	0.5957
White	24.52	51	32.98	62	1.8615	0.0627
Black & Other	30.45	67	25.96	61	-1.0048	0.3150

HISPANIC MOTHER						
TOTAL ²	5.61	24	6.62	28	0.6335	0.5264
White	11.54	24	8.51	16	-0.9985	0.3181
Black & Other	0.00	0	0.85	2	1.3776	0.1683

¹Race of mother

²Includes unknown races

³Proportions are expressed as percentages

Table 10.
 Infant Mortality Rates¹ by Race² and Birthweight³ Group
 South Carolina
 2009, 2010, and 2011
 (Residence Data)

Infant Mortality for Very Low Birthweight (0-1499 grams)									
	Total			White			Black & Other		
Year	Number of Live Birth	Number of Infant Death	Rate	Number of Live Birth	Number of Infant Death	Rate	Number of Live Birth	Number of Infant Death	Rate
2009	1,111*	227	204.3	474	87	183.5	635	140	220.5
2010	1,104*	215	194.7	452	92	203.5	651	123	188.9
2011	1,064	228	214.3	470	83	176.6	594	145	244.1

Infant Mortality for Intermediate Low Birthweight (1500-2499 grams)									
	Total			White			Black & Other		
Year	Number of Live Birth	Number of Infant Death	Rate	Number of Live Birth	Number of Infant Death	Rate	Number of Live Birth	Number of Infant Death	Rate
2009	4,946*	58	11.7	2,550	32	12.5	2,394	26	10.9
2010	4,678*	72	15.4	2,364	32	13.5	2,312	40	17.3
2011	4,590*	57	12.4	2,336	34	14.6	2,252	23	10.2

Infant Mortality for Normal Birthweight (2500+ grams)									
	Total			White			Black & Other		
Year	Number of Live Birth	Number of Infant Death	Rate	Number of Live Birth	Number of Infant Death	Rate	Number of Live Birth	Number of Infant Death	Rate
2009	54,563*	141	2.6	36,268	84	2.3	18,238	57	3.1
2010	52,462*	139	2.6	35,062	82	2.3	17,374	57	3.3
2011	51,651*	136	2.6	34,583	70	2.0	17,034	66	3.9

¹Rates per 1,000 live births

²Race of mother

³Does not include missing birthweights

*Includes unknown race

Table 10-A.
 Neonatal Mortality Rates¹ by Race² and Birthweight³ Group
 South Carolina
 2009, 2010, and 2011
 (Residence Data)

Neonatal Mortality for Very Low Birthweight (0-1499 grams)									
	Total			White			Black & Other		
Year	Number of Live Birth	Number of Infant Death	Rate	Number of Live Birth	Number of Infant Death	Rate	Number of Live Birth	Number of Infant Death	Rate
2009	1,111*	191	171.9	474	82	173.0	635	109	171.7
2010	1,104*	181	163.9	452	75	165.9	651	106	162.8
2011	1,064	197	185.2	470	74	157.4	594	123	207.1

Neonatal Mortality for Intermediate Low Birthweight (1500-2499 grams)									
	Total			White			Black & Other		
Year	Number of Live Birth	Number of Infant Death	Rate	Number of Live Birth	Number of Infant Death	Rate	Number of Live Birth	Number of Infant Death	Rate
2009	4,946*	24	4.9	2,550	13	5.1	2,394	11	4.6
2010	4,678*	42	9.0	2,364	22	9.3	2,312	20	8.7
2011	4,590*	29	6.3	2,336	17	7.3	2,252	12	5.3

Neonatal Mortality for Normal Birthweight (2500+ grams)									
	Total			White			Black & Other		
Year	Number of Live Birth	Number of Infant Death	Rate	Number of Live Birth	Number of Infant Death	Rate	Number of Live Birth	Number of Infant Death	Rate
2009	54,563*	42	0.8	36,268	24	0.7	18,238	18	1.0
2010	52,462*	41	0.8	35,062	26	0.7	17,374	15	0.9
2011	51,651*	27	0.5	34,583	12	0.3	17,034	15	0.9

¹Rates per 1,000 live births

²Race of mother

³Does not include missing birthweights

*Includes unknown race

Table 10-B.
 Postneonatal Mortality Rates¹ by Race² and Birthweight³ Group
 South Carolina
 2009, 2010, and 2011
 (Residence Data)

Postneonatal Mortality for Very Low Birthweight (0-1499 grams)									
	Total			White			Black & Other		
Year	Number of Live Birth	Number of Infant Death	Rate	Number of Live Birth	Number of Infant Death	Rate	Number of Live Birth	Number of Infant Death	Rate
2009	1,111*	36	32.4	474	5	10.5	635	31	48.8
2010	1,104*	34	30.8	452	17	37.6	651	17	26.1
2011	1,064	31	29.1	470	9	19.1	594	22	37.0

Postneonatal Mortality for Intermediate Low Birthweight (1500-2499 grams)									
	Total			White			Black & Other		
Year	Number of Live Birth	Number of Infant Death	Rate	Number of Live Birth	Number of Infant Death	Rate	Number of Live Birth	Number of Infant Death	Rate
2009	4,946*	34	6.9	2,550	19	7.5	2,394	15	6.3
2010	4,678*	30	6.4	2,364	10	4.2	2,312	20	8.7
2011	4,590*	28	6.1	2,336	17	7.3	2,252	11	4.9

Postneonatal Mortality for Normal Birthweight (2500+ grams)									
	Total			White			Black & Other		
Year	Number of Live Birth	Number of Infant Death	Rate	Number of Live Birth	Number of Infant Death	Rate	Number of Live Birth	Number of Infant Death	Rate
2009	54,563*	99	1.8	36,268	60	1.7	18,238	39	2.1
2010	52,462*	98	1.9	35,062	56	1.6	17,374	42	2.4
2011	51,651*	109	2.1	34,583	58	1.7	17,034	51	3.0

¹Rates per 1,000 live births

²Race of mother

³Does not include missing birthweights

*Includes unknown race

Figure 1
Percentage of Infant Deaths by Birthweight Group
South Carolina, 2009-2011 Residence Data

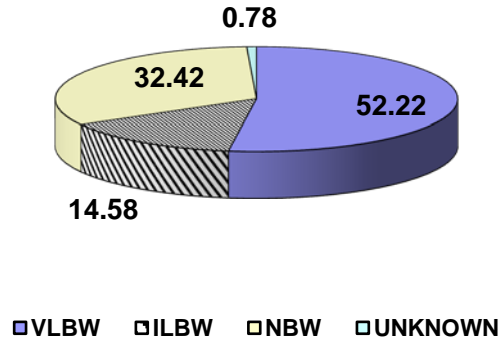


Figure 1-A
Percentage of White Infant Deaths by Birthweight Group
South Carolina, 2009-2011 Residence Data

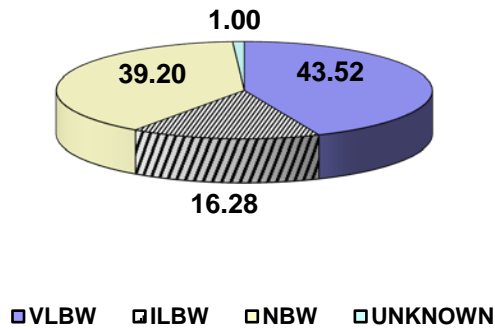


Figure 1-B
Percentage of Black and Other Infant Deaths by Birthweight Group
South Carolina, 2009-2011 Residence Data

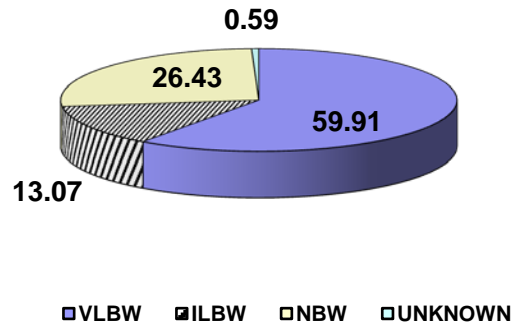
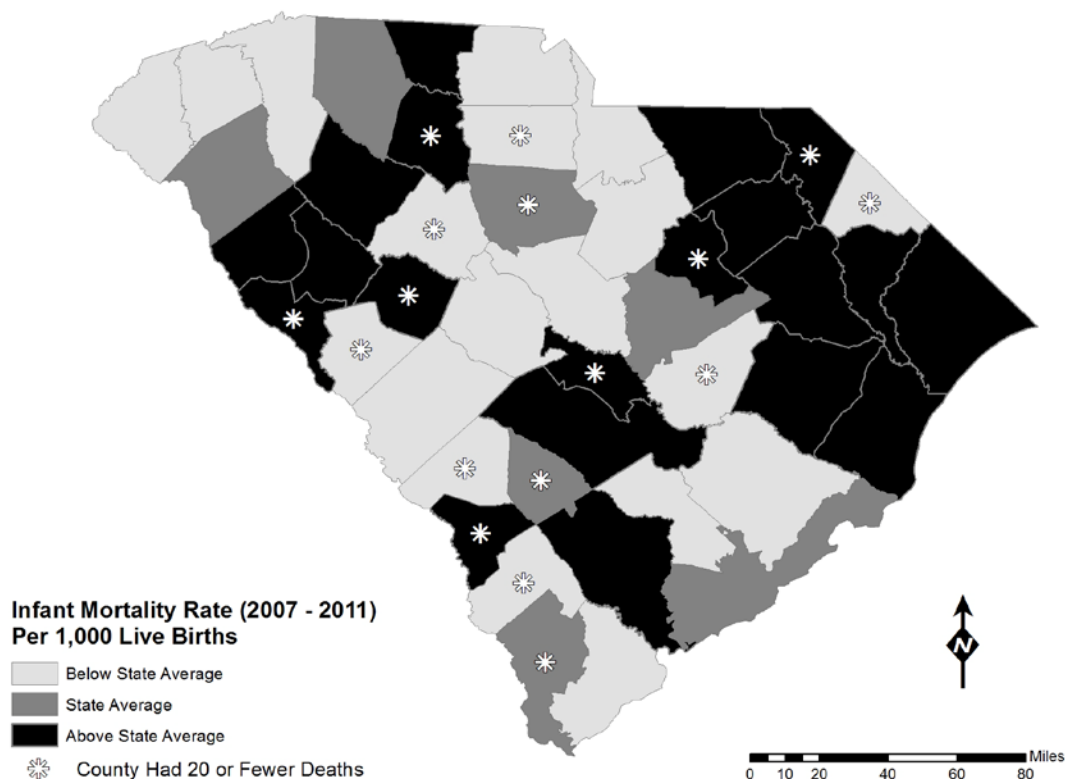


Figure 2.
Five Year Infant Mortality Rates by County
South Carolina
2007-2011
(Residence Data)



NOTE: Counties with rates calculated with 20 or fewer deaths are unreliable and should be used cautiously.

Above State Average indicates a rate greater than 8.0.
State Average indicates a rate between 7.4 and 8.0 inclusive.
Below State Average indicates a rate lower than 7.4.