

YOU ARE INVITED TO ATTEND A PUBLIC ENGAGEMENT SESSION

# South Carolina's Energy Future



Public  
Engagement



Clean  
Power  
Plan



State  
Energy  
Plan

## SC's Energy Plan and EPA's Clean Power Plan

**Date:** November 19, 2015

**Time:** 5:30–8 p.m.

Formal presentations will begin at 6 p.m. Representatives available for one-on-one discussions before and after presentations.

**Place:** BMW Zentrum Museum  
1400 Hwy 101 South  
Greer, SC 29651

### Topics to be discussed:

- South Carolina's Energy Plan  
SC Office of Regulatory Staff's Energy Office
- EPA's Clean Power Plan  
SC DHEC
- Community Perspectives

Please visit DHEC's website for details about additional public engagement sessions:

[WWW.SCDHEC.GOV/CLEANPOWERPLAN](http://WWW.SCDHEC.GOV/CLEANPOWERPLAN)



South Carolina Department of Health  
and Environmental Control



# Public Engagement Session on South Carolina's Energy Future: SC's Energy Plan and EPA's Clean Power Plan

Thursday, November 19, 2015  
Greer, South Carolina

## AGENDA

Welcome and Introductions

Myra C. Reece, Interim Director  
Environmental Affairs  
SC DHEC

South Carolina's Energy Plan

M. Anthony James, P.E., Director  
Energy Policy  
SC Office of Regulatory Staff

EPA's Clean Power Plan

Robbie Brown, Director  
Air Assessment & Regulation  
Division  
SC DHEC

Audience Survey

Karen Sprayberry  
Environmental Justice Advisor  
Bureau of Air Quality, SC DHEC

Community Perspectives

Representative Harold Mitchell  
SC House of  
Representatives (District #31)

Closing Remarks

Myra C. Reece

*Staff will be available after presentations to take individual questions in the booth area.*



**ENERGY  
OFFICE**



# Participant Polling: Questions and Results

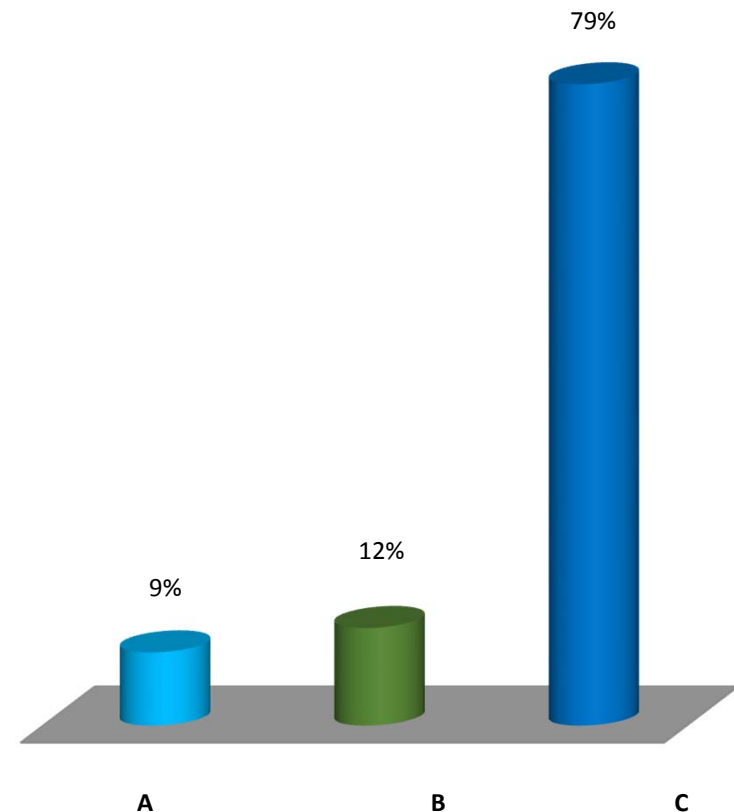
The following attachment provides a summary of the public engagement session. The summary provides both the questions posed as well as participant responses. This summary only represents the responses from those individuals who attended and participated in a particular public engagement session and are not meant to be representative of any larger population.

# Results from Upstate Session 11/19/2015

- 33 Individuals Participated

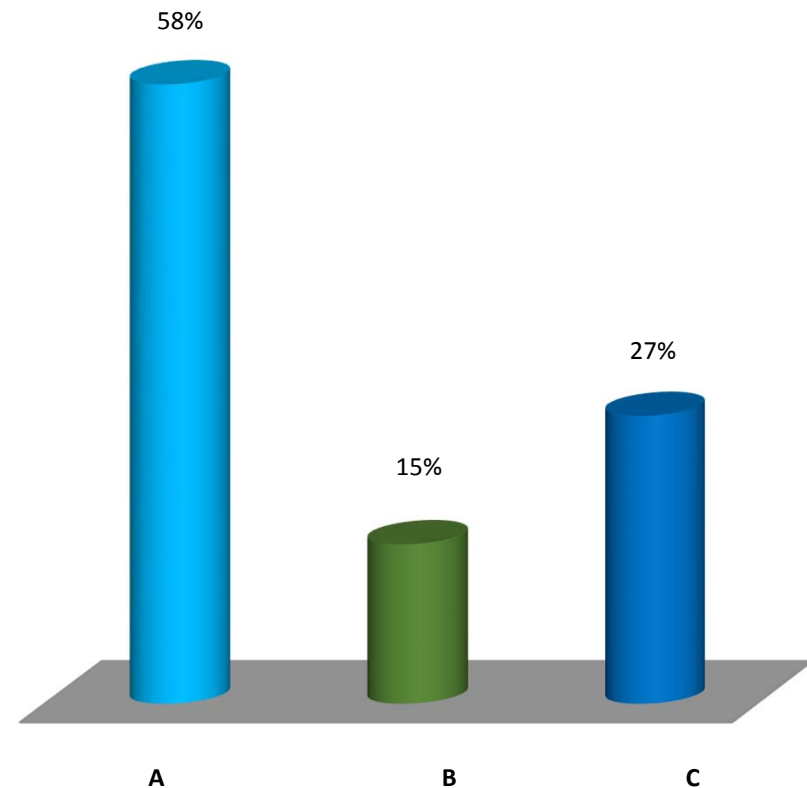
The EPA's Clean Power Plan is intended to reduce emissions of Carbon Dioxide (CO<sub>2</sub>) from power plants in the U.S. How important is reducing CO<sub>2</sub> from power plants to you?

- A. Not very important
- B. Somewhat important
- C. Very important



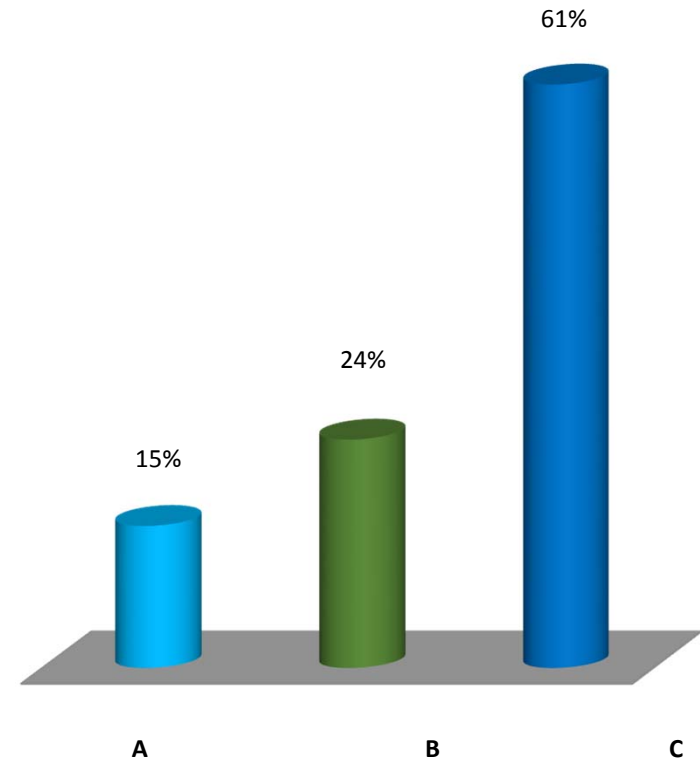
As the state's population and economic activity increase, it is likely that we will need new power generation. If you were in charge, what would be the most important factor to consider when thinking about meeting future needs?

- A. Protecting the environment
- B. Low utility bills
- C. Reliable service



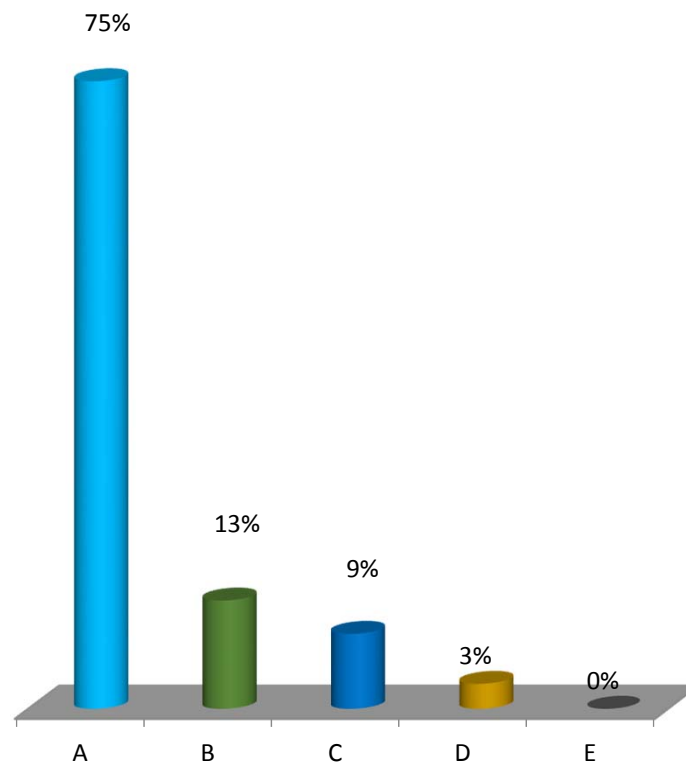
Given your answer to the previous question, what is the second most important consideration to you?

- A. Protecting the environment
- B. Low utility bills
- C. Reliable service



The EPA's Clean Power Plan requires South Carolina to submit a plan for meeting the EPA's goal for reducing CO2 from power plants in 2018. This plan should include actions that ensure the state will meet its final goal in 2030. If a state does not submit a plan, or does not have its plan approved by the EPA, the EPA will develop a plan for that state. How important is it to you that South Carolina develops its own plan, instead of the EPA developing the plan for our state?

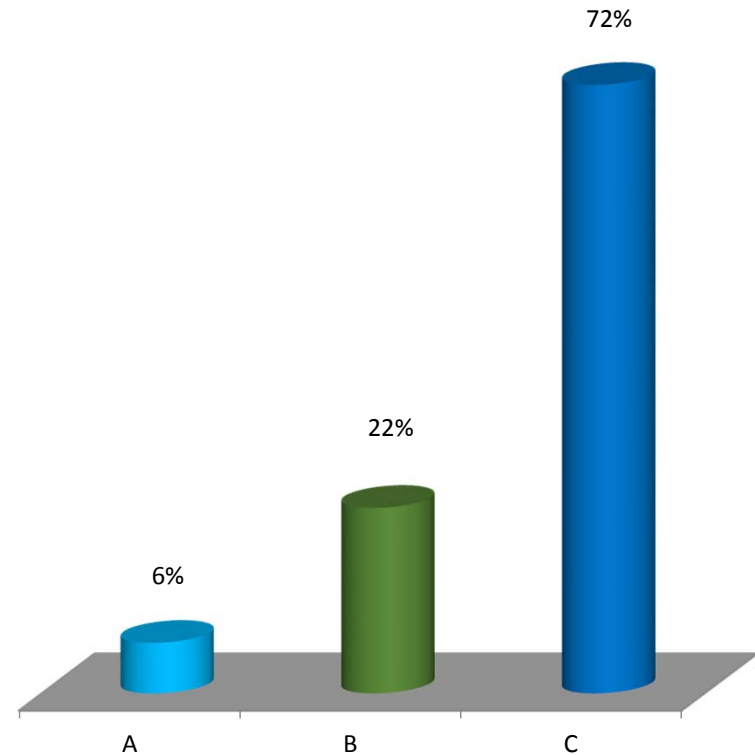
- A. Very important to me that South Carolina develops its own plan
- B. Somewhat important to me that South Carolina develops its own plan
- C. I am neutral
- D. Somewhat important to me that EPA develops the plan for South Carolina
- E. Very important to me that that EPA develops the plan for South Carolina





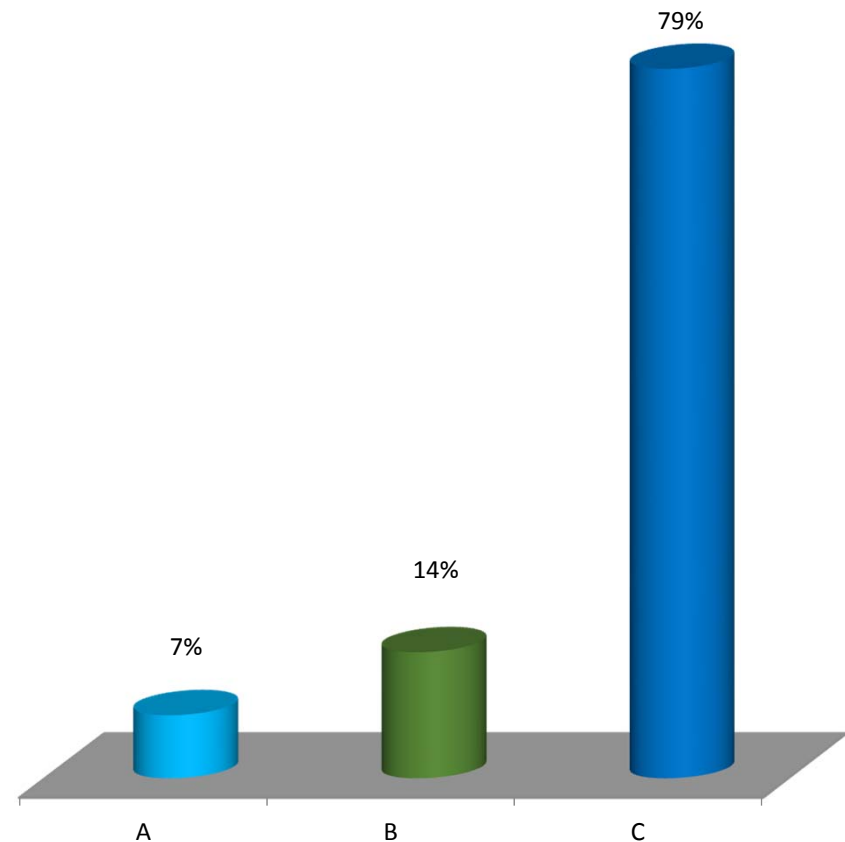
How important is it to you that consumer-oriented compliance options, like energy efficiency and distributed energy resources, be included in our state implementation plan?

- A. Not very important to me
- B. Somewhat important to me
- C. Very important to me



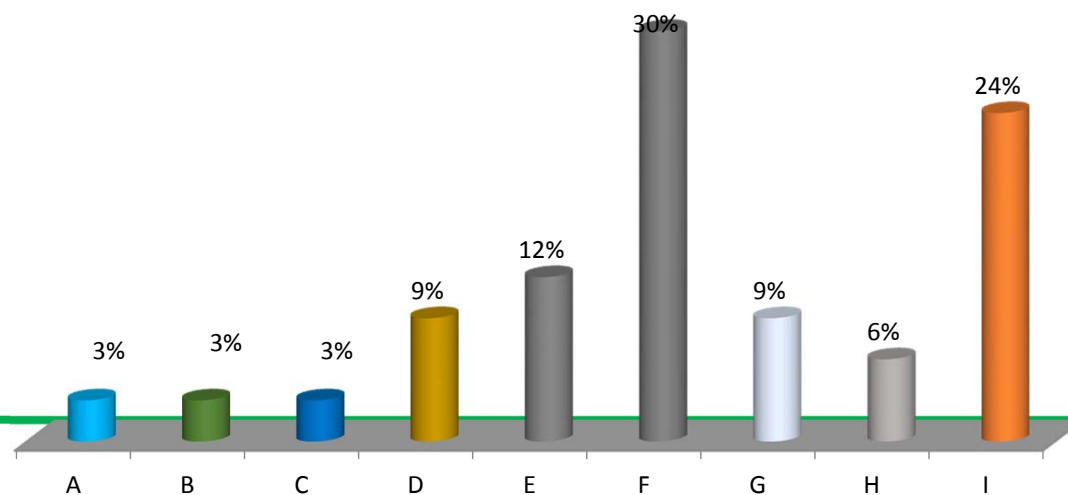
How interested are you in staying informed of the potential actions that may be required by the state of South Carolina to meet the EPA's Clean Power Plan 2030 goal for reducing CO2 from power plants?

- A. Not very interested
- B. Somewhat interested
- C. Very interested



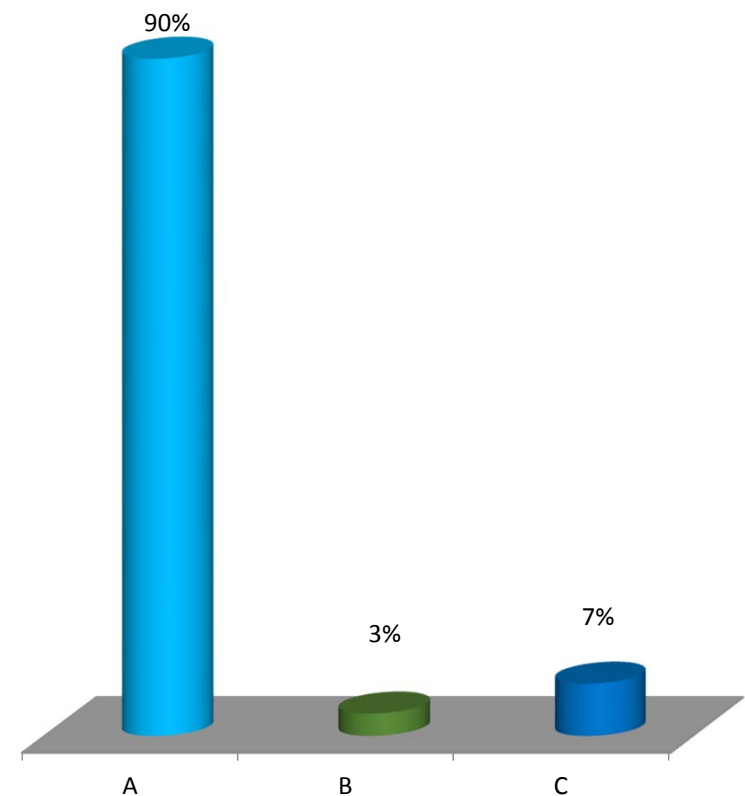
# Which of the following no cost/low cost energy saving measures have you taken?

- A. Changed lightbulbs from incandescent (old fashioned) to CFL (swirly)
- B. Changed lightbulbs from incandescent or CFL to LED (all sorts of shapes)
- C. Installed ceiling fans to help cool a room
- D. Made sure all windows, especially those facing south or west, have blinds or curtains to block sun on hot summer days
- E. Checked for leaks around windows, doors and plumbing pipes and caulked, sealed, or used weather stripping
- F. Planted trees, tall shrubs or vines to shade the south/west side of the house
- G. None of the above
- H. Other(s) not listed



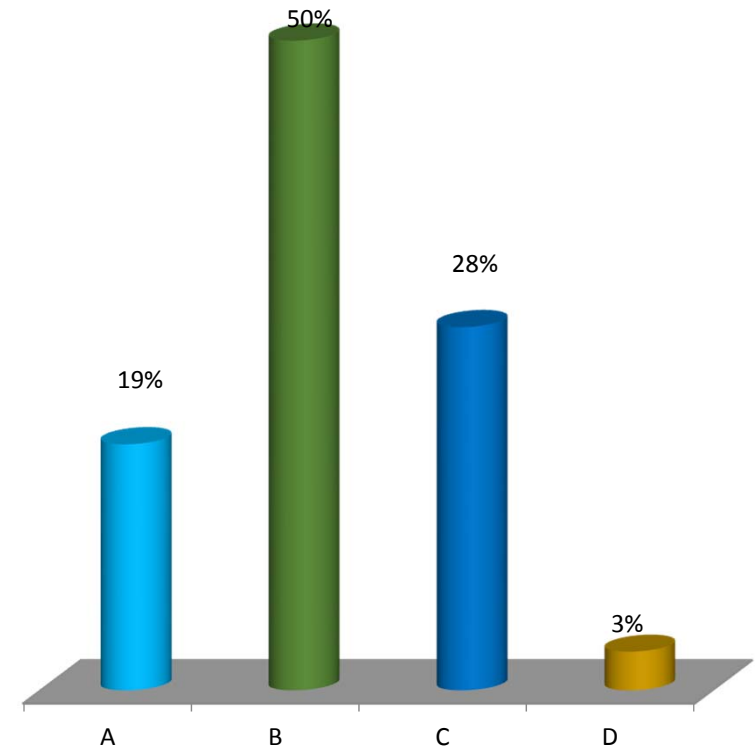
EPA is currently taking comments on several aspects of its Clean Energy Incentive Program (CEIP). What improvements or changes would you like to see included in this incentive program?

- A. Additional incentives for renewable energy projects in low income communities, such as community shared solar projects
- B. Additional incentives for energy efficiency measures and renewable energy projects that begin construction before the submittal of state plans in 2018. (EPA should offer incentives for states who are taking action now)
- C. Other(s) not listed



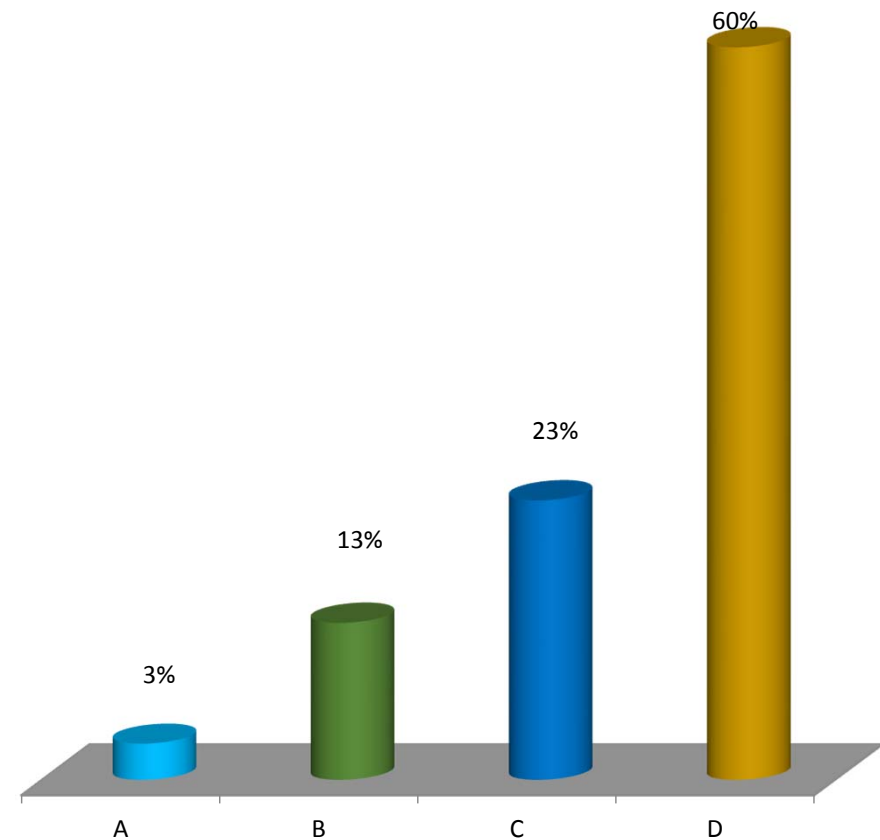
“Park and Ride” facilities are designated areas where commuters can park their cars and either carpool with others or take public transit the rest of the way to their destination. How likely would you be to use a Park and Ride facility if one were available in your area?

- A. Not at all...I like my space
- B. I'd like to try it
- C. Love to!
- D. There is one nearby and I use it often



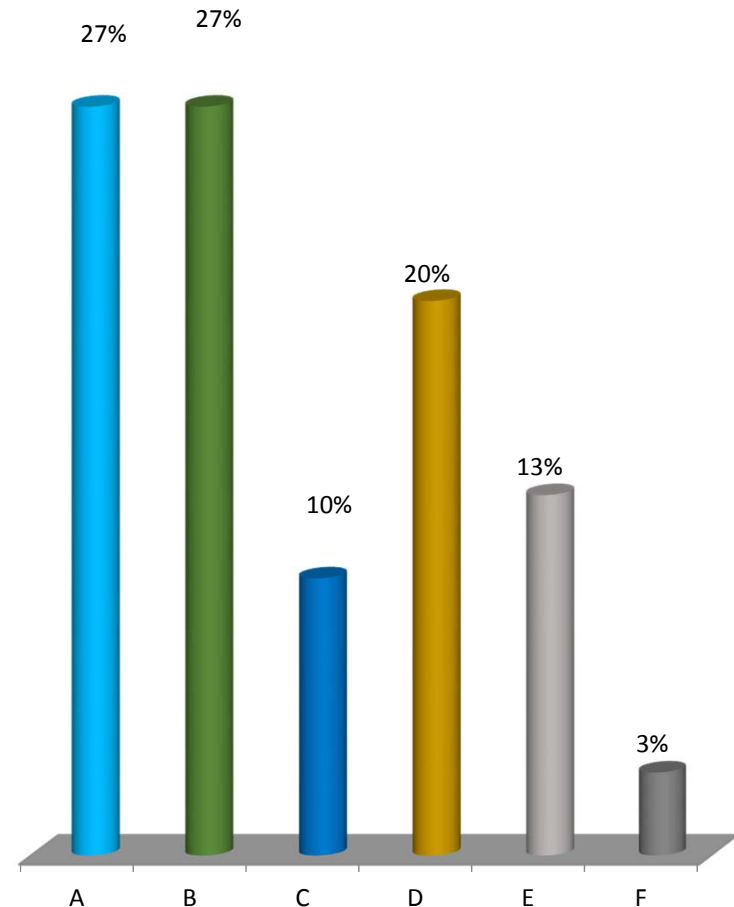
# Which of the following forms of public transit/shared transit do you use?

- A. Bus
- B. Regional transport
- C. Car pool
- D. None of the above



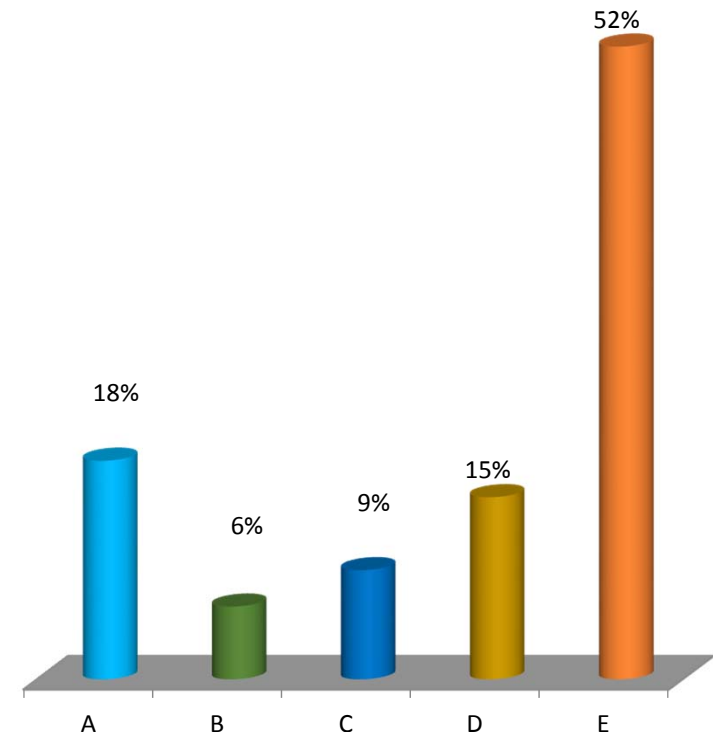
# If you don't use public transit of any kind, or don't use it often, is it because...

- A. It isn't available where I live
- B. It doesn't go close to where I need to go
- C. It doesn't seem safe
- D. I like the freedom of my own vehicle
- E. Other
- F. Not applicable...I do use it!



# Please indicate your desired level of involvement in SC's energy future:

- A. I'll visit the DHEC website to get the latest updates at my convenience
- B. I would like to receive email updates from DHEC
- C. I would like to attend meetings of the local air quality coalition
- D. I would like to participate in community focus group(s)





# What term best describes you?

- A. General public
- B. Regulatory consultant
- C. Small business owner
- D. Educator
- E. Student
- F. Health practitioner
- G. Conservation organization member
- H. Media
- I. Other

Results not available for this question