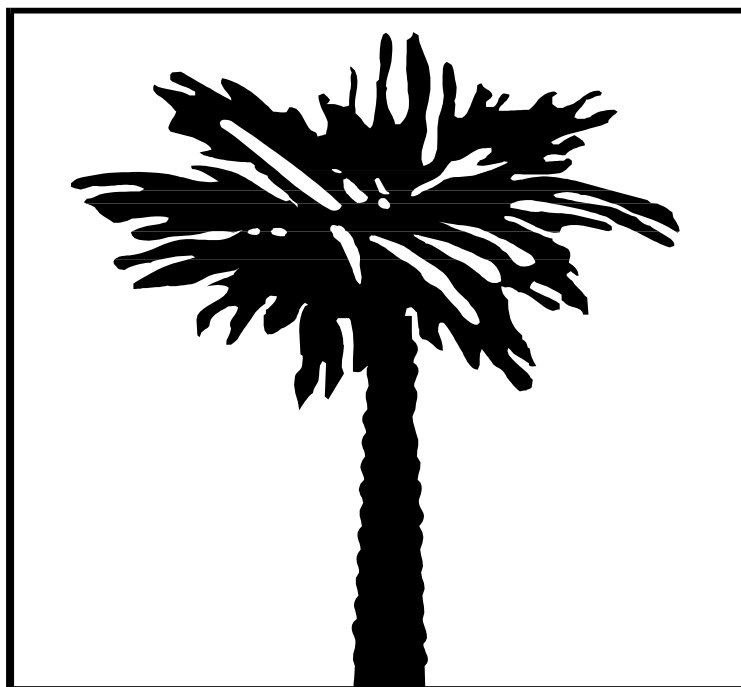


Infant Mortality

South Carolina, 1998

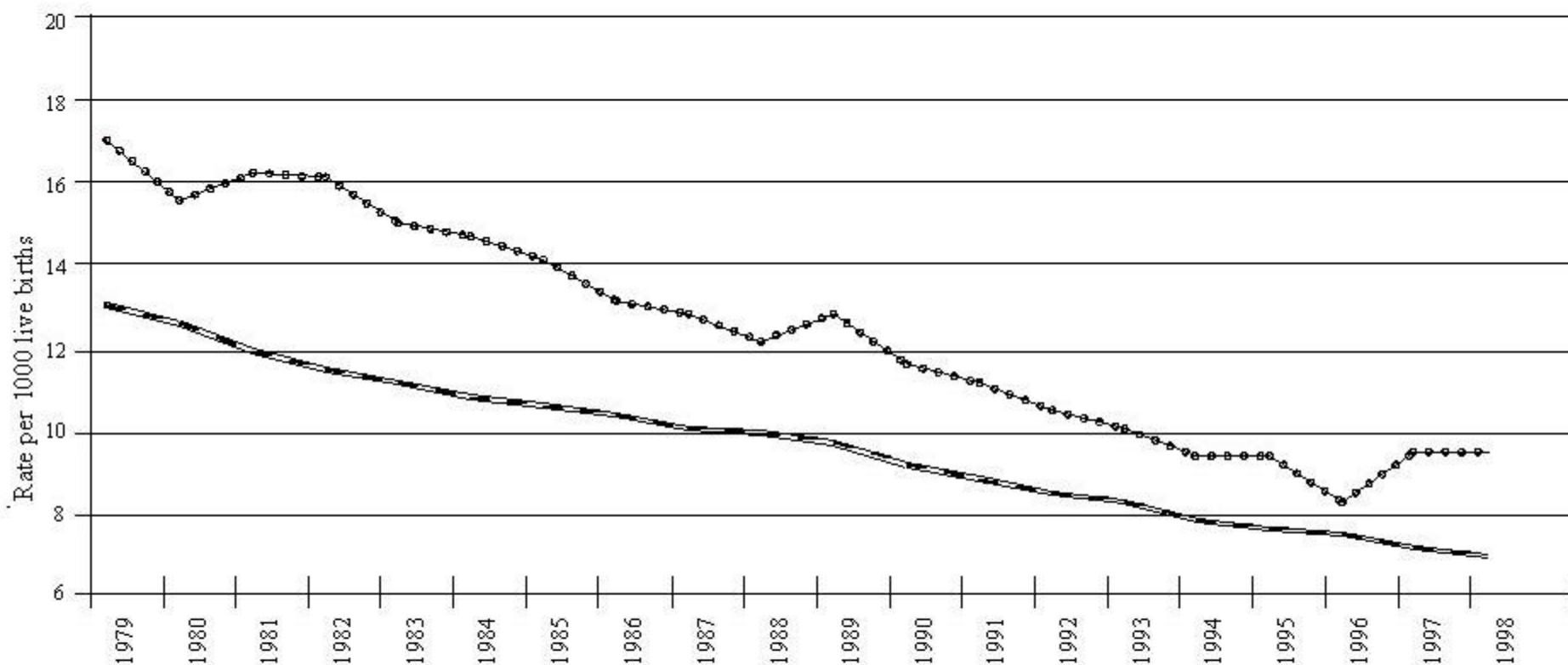
(Residence Data)



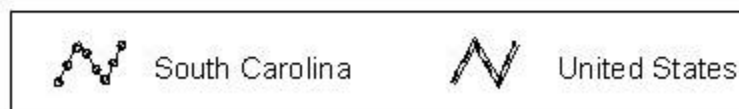
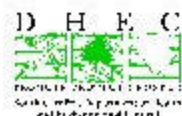
South Carolina Department of Health and Environmental Control
Office of Public Health Statistics and Information Systems
Division of Biostatistics
Columbia, South Carolina 29201
November 1999



South Carolina & United States Residents Infant Mortality Rates for 1979 - 1998



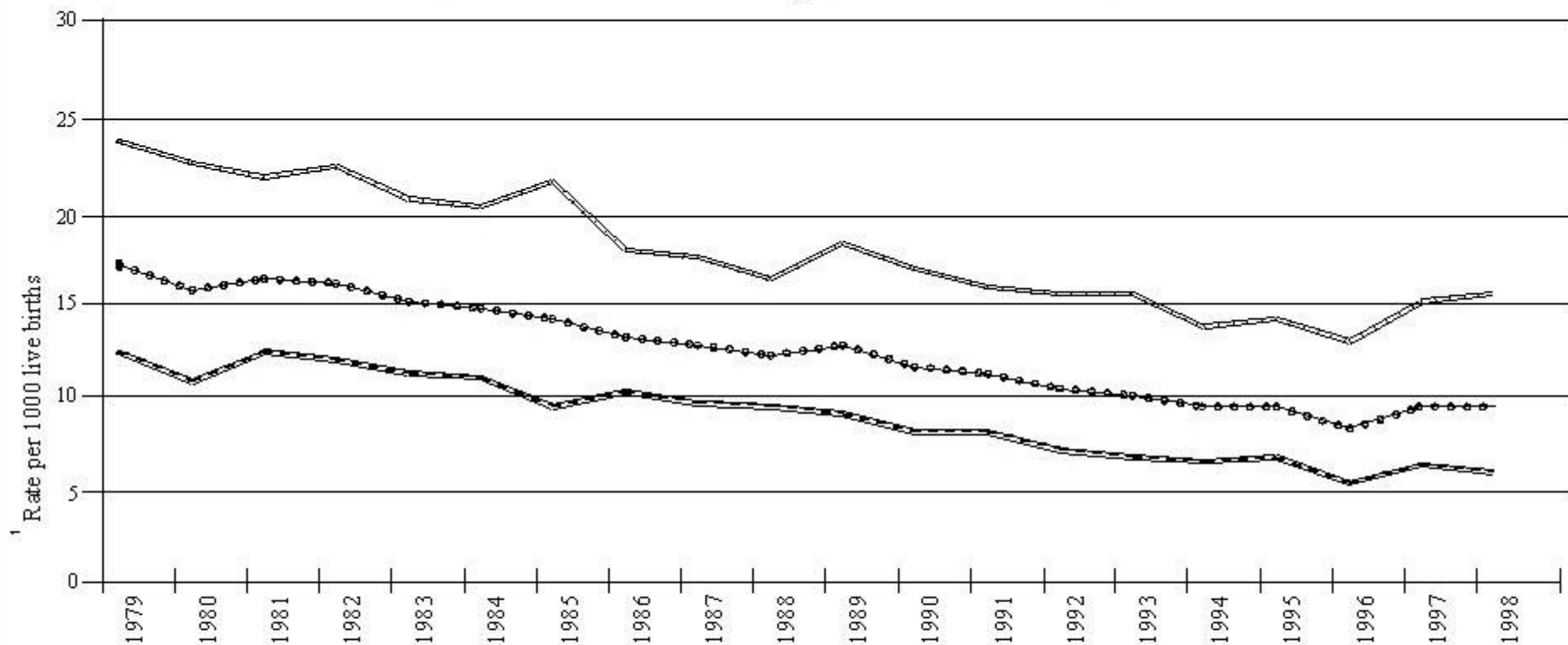
	1979	1980	1981	1982	1983	1984	1985	1986	1987	1988	1989	1990	1991	1992	1993	1994	1995	1996	1997	1998
South Carolina	17.0	15.6	16.2	16.1	15.0	14.7	14.2	13.2	12.8	12.2	12.8	11.6	11.2	10.5	10.1	9.4	9.4	8.3	9.5	9.5
United States	13.1	12.6	11.9	11.5	11.2	10.8	10.6	10.4	10.1	10.0	9.8	9.2	8.9	8.5	8.3	7.9	7.6	7.5	7.2	7.0



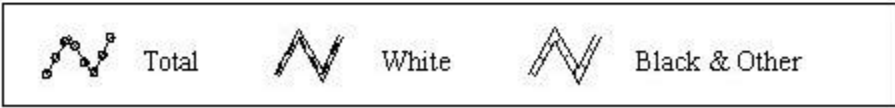
Source: SC DHEC, PHSIS, Division of Biostatistics, GIS Lab

South Carolina Infant Mortality Rates by Race

Residence Data, 1979 - 1998



	1979	1980	1981	1982	1983	1984	1985	1986	1987	1988	1989	1990	1991	1992	1993	1994	1995	1996	1997	1998
Total	17.0	15.6	16.2	16.1	15.0	14.7	14.2	13.2	12.8	12.2	12.8	11.6	11.2	10.5	10.1	9.4	9.4	8.3	9.5	9.5
White	12.3	10.8	12.4	12.0	11.3	11.1	9.5	10.2	9.7	9.5	9.1	8.2	8.1	7.2	6.7	6.6	6.7	5.5	6.3	6.0
Black & Other	23.6	22.4	21.6	22.2	20.6	20.2	21.4	17.9	17.5	16.2	18.2	16.9	15.9	15.5	15.4	13.8	14.1	13.0	15.0	15.4



Source: SC DHEC, PHSIS, Division of Biostatistics, GIS Lab



RATE CALCULATIONS WITH SMALL NUMBERS

Variations, which result from chance, exist in all statistics. This fact is of particular importance in the calculation of rates with small numbers of events (here, deaths) where these variations are proportionately large in relation to the base figure, the population at risk (here, live births). As an example, small changes in the number of deaths or births in small population areas (here, small counties) could result in large variations in these crude rates. For this reason, ***rates for counties with small populations should be used cautiously***. Three-year infant mortality rates are calculated to ensure that these rates are less influenced by chance variations, thus making them more stable and more appropriate for trend comparisons.

Table 1.
 Infant Death Rates¹ with 95% Confidence Intervals²
 South Carolina, 1973-1998
 (Residence Data)

Year	Number of Live Births	Number of Infant Deaths	Infant Death Rate	95 Percent Confidence Interval
1973	48,922	1,105	22.6	(21.3, 23.9)
1974	48,432	1,031	21.3	(20.0, 22.6)
1975	46,665	897	19.2	(17.9, 20.5)
1976	47,651	930	19.5	(18.2, 20.8)
1977	49,848	876	17.6	(16.4, 18.8)
1978	49,558	919	18.5	(17.3, 19.7)
1979	50,586	857	16.9	(15.8, 18.0)
1980	51,908	809	15.6	(14.5, 16.7)
1981	51,745	836	16.2	(15.1, 17.3)
1982	51,554	832	16.1	(15.0, 17.2)
1983	50,731	760	15.0	(13.9, 16.1)
1984	50,561	743	14.7	(13.6, 15.8)
1985	51,846	735	14.2	(13.2, 15.2)
1986	51,726	685	13.2	(12.2, 14.2)
1987	52,774	673	12.8	(11.8, 13.8)
1988	55,090	673	12.2	(11.3, 13.1)
1989	57,239	731	12.8	(11.9, 13.7)
1990	58,461	679	11.6	(10.7, 12.5)
1991	57,517	644	11.2	(10.3, 12.1)
1992	56,102	588	10.5	(9.7, 11.3)
1993	53,715	544	10.1	(9.3, 11.0)
1994	51,907	486	9.4	(8.5, 10.2)
1995	50,913	480	9.4	(8.6, 10.2)
1996	51,105	424	8.3	(7.5, 9.1)
1997	52,205	494	9.5	(8.7, 10.3)
1998	53,833	511	9.5	(8.7, 10.3)

Table 2.
 Infant Death Rates¹ with 95% Confidence Intervals²
 South Carolina
 1979-1983, 1984-1988, 1989-1993, 1994-1998
 (Residence Data)

Years	Number of Live Births	Number of Infant Deaths	Infant Death Rate	95 Percent Confidence Interval
1979-1983	256,524	4,094	16.0	(15.5, 16.4)
1984-1988	261,997	3,509	13.4	(13.0, 13.8)
1989-1993	283,037	3,186	11.3	(10.9, 11.7)
1994-1998	259,963	2,395	9.2	(8.9, 9.6)

¹Rate per 1,000 live births

² $r \pm 61.981 (r/n)^{1/2}$, where r = infant death rate and n = number live births

Table 3.
 Infant, Neonatal and Postneonatal Mortality and Mortality Rates¹ by Race²
 South Carolina 1994,1995,1996,1997 and 1998
 (Residence Data)

Infant Mortality						
	Total		White		Black & Other	
Year	Number	Rate	Number	Rate	Number	Rate
1994	486	9.4	211	6.6	275	13.8
1995	480	9.4	212	6.7	268	14.1
1996	424	8.3	179	5.5	245	13.0
1997	494	9.5	207	6.3	287	15.0
1998	511	9.5	204	6.0	307	15.5

Neonatal Mortality						
	Total		White		Black & Other	
Year	Number	Rate	Number	Rate	Number	Rate
1994	336	6.5	141	4.4	195	9.8
1995	328	6.4	139	4.4	189	9.9
1996	286	5.6	111	3.4	175	9.3
1997	352	6.7	149	4.5	203	10.6
1998	358	6.7	132	3.9	226	11.4

Postneonatal Mortality						
	Total		White		Black & Other	
Year	Number	Rate	Number	Rate	Number	Rate
1994	150	2.9	70	2.2	80	4.0
1995	152	3.0	73	2.3	79	4.1
1996	138	2.7	68	2.1	70	3.7
1997	142	2.7	58	1.8	84	4.4
1998	153	2.8	72	2.1	81	4.1

¹Rate per 1,000 live births

²Race of mother

Table 4.
 Infant Mortality and Infant Mortality Rates¹
 South Carolina and Each County, 1998, 1996-1998, 1993-1995
 (Residence Data)

County of Residence	1998		1996-1998		1993-1995	
	Number	Rate	Number	Rate	Number	Rate
South Carolina	511	9.5	1,429	9.1	1,510	9.6
Abbeville	-	0	4	3.9	12	12.9
Aiken	14	7.8	37	6.7	48	8.4
Allendale	-	0	2	3.9	15	27.3
Anderson	32	14.9	62	9.8	64	10.6
Bamberg	2	9.6	5	7.8	5	7.2
Barnwell	2	5.9	6	6.1	6	5.9
Beaufort	6	3.6	29	6.0	42	8.6
Berkeley	18	8.9	43	7.2	74	11.2
Calhoun	3	17.9	4	7.7	7	14.2
Charleston	37	8.4	139	11.0	156	11.3
Cherokee	6	8.7	26	12.4	18	9.3
Chester	8	16.8	16	11.5	18	12.9
Chesterfield	10	18.2	17	10.1	29	16.5
Clarendon	8	19.6	14	11.9	12	10.4
Colleton	8	15.4	16	10.1	15	9.1
Darlington	12	13.2	30	11.0	40	14.6
Dillon	4	8.2	13	9.1	13	8.6
Dorchester	11	9.5	35	10.2	27	6.9
Edgefield	5	18.9	11	13.8	4	5.1
Fairfield	7	20.9	10	10.3	5	5.0
Florence	18	9.6	54	10.1	59	11.3
Georgetown	6	8.2	24	11.1	27	12.6
Greenville	39	7.5	97	6.5	111	7.9
Greenwood	11	11.4	39	14.2	28	10.3
Hampton	2	6.4	6	6.8	13	14.1
Horry	16	6.9	62	9.6	52	9.0
Jasper	2	7.1	6	6.9	13	15.9
Kershaw	5	7.5	18	9.2	9	4.8
Lancaster	5	6.2	18	7.7	28	12.1
Laurens	9	10.4	23	9.3	32	13.3
Lee	5	19.4	14	19.6	8	10.5
Lexington	21	6.9	60	6.8	52	6.4
McCormick	2	24.1	3	11.2	5	17.0
Marion	9	18.8	24	16.7	12	7.9
Marlboro	5	11.5	11	8.6	19	14.5
Newberry	3	5.7	10	7.2	8	6.0
Oconee	7	8.8	17	7.3	12	5.5
Orangeburg	18	14.2	45	12.3	52	13.9
Pickens	13	9.4	35	9.0	31	8.4
Richland	44	10.3	111	8.8	96	7.5
Saluda	7	27.3	11	15.1	11	16.2
Spartanburg	20	6.1	66	6.7	71	7.3
Sumter	18	10.6	71	14.2	56	11.4
Union	5	13.6	16	14.0	11	9.8
Williamsburg	6	12.0	20	13.6	24	14.4
York	22	10.4	49	7.9	60	10.2

¹Rate per 1,000 live births

Table 4-A.
 White¹ Infant Mortality and Infant Mortality Rates²
 South Carolina and Each County, 1998, 1996-1998, 1993-1995
 (Residence Data)

County of Residence	1998		1996-1998		1993-1995	
	Number	Rate	Number	Rate	Number	Rate
South Carolina	204	6.0	590	5.9	641	6.7
Abbeville	-	0	1	1.5	4	6.9
Aiken	5	4.2	18	4.7	28	7.2
Allendale	-	0	-	0	2	18.5
Anderson	24	14.5	40	8.2	45	9.6
Bamberg	-	0	-	0	1	4.8
Barnwell	1	6.1	3	6.6	3	5.9
Beaufort	4	3.5	17	5.1	19	6.1
Berkeley	8	5.6	18	4.3	33	7.1
Calhoun	1	16.4	1	4.7	3	15.2
Charleston	8	3.2	45	6.3	44	5.7
Cherokee	2	3.9	13	8.4	11	7.9
Chester	5	19.2	6	8.1	2	2.9
Chesterfield	3	9.0	3	3.0	11	11.5
Clarendon	2	13.7	3	6.4	2	4.2
Colleton	4	13.7	6	7.1	5	6.7
Darlington	-	0	4	3.2	8	6.3
Dillon	2	9.7	4	7.0	-	0
Dorchester	3	3.6	13	5.2	14	5.0
Edgefield	1	6.9	3	7.0	1	2.8
Fairfield	2	18.3	2	6.1	-	0
Florence	4	4.0	13	4.6	21	7.8
Georgetown	2	5.4	11	10.5	9	9.2
Greenville	21	5.3	52	4.5	72	6.8
Greenwood	9	14.9	20	11.8	7	4.4
Hampton	-	0	2	6.1	7	22.7
Horry	7	4.1	30	6.2	23	5.5
Jasper	-	0	1	2.6	3	9.7
Kershaw	1	2.2	8	6.0	4	3.1
Lancaster	2	3.6	8	4.9	16	10.5
Laurens	2	3.4	13	7.7	17	10.6
Lee	3	52.6	6	36.4	-	0
Lexington	14	5.7	38	5.3	37	5.6
McCormick	-	0	-	0	2	22.7
Marion	-	0	4	8.1	2	3.8
Marlboro	1	5.8	2	3.8	8	15.0
Newberry	-	0	6	7.5	5	7.5
Oconee	4	5.8	14	6.9	10	5.3
Orangeburg	6	13.5	11	8.8	11	9.0
Pickens	11	8.6	33	9.3	29	8.8
Richland	4	2.1	15	2.7	22	3.9
Saluda	5	29.4	7	14.8	5	13.2
Spartanburg	11	4.6	45	6.2	46	6.6
Sumter	6	7.5	15	6.2	16	6.5
Union	2	8.6	8	11.4	3	4.5
Williamsburg	-	0	-	0	3	7.1
York	14	8.7	28	6.0	27	6.2

¹Race of mother

²Rate per 1,000 live births

Table 4-A. (cont.)
 Black and Other¹ Infant Mortality and Infant Mortality Rates²
 South Carolina and Each County, 1998, 1996-1998, 1993-1995
 (Residence Data)

County of Residence	1998		1996-1998		1993-1995	
	Number	Rate	Number	Rate	Number	Rate
South Carolina	307	15.5	839	14.5	869	14.4
Abbeville	-	0	3	8.6	8	22.6
Aiken	9	15.3	19	11.0	20	11.0
Allendale	-	0	2	4.8	13	29.4
Anderson	8	16.3	22	15.4	19	14.0
Bamberg	2	14.4	5	12.0	4	8.2
Barnwell	1	5.7	3	5.7	3	5.9
Beaufort	2	3.9	12	7.8	23	13.2
Berkeley	10	8.9	25	14.1	41	21.1
Calhoun	2	18.7	3	9.8	4	13.5
Charleston	29	15.4	94	17.3	112	18.7
Cherokee	4	23.0	13	23.7	7	13.1
Chester	3	13.9	10	15.2	16	22.5
Chesterfield	7	32.6	14	20.3	18	22.4
Clarendon	6	22.8	11	15.5	10	14.5
Colleton	4	17.5	10	13.4	10	11.1
Darlington	12	23.9	26	17.7	32	21.9
Dillon	2	7.1	9	10.6	13	14.5
Dorchester	8	25.8	22	23.3	13	11.6
Edgefield	4	33.3	8	21.6	3	7.1
Fairfield	5	22.1	8	12.5	5	7.3
Florence	14	16.0	41	16.4	38	14.9
Georgetown	4	10.9	13	11.7	18	15.4
Greenville	18	14.8	45	12.9	39	11.1
Greenwood	2	5.6	19	18.1	21	18.8
Hampton	2	9.7	4	7.2	6	9.8
Horry	9	14.9	32	19.8	29	17.7
Jasper	2	12.2	5	10.1	10	19.6
Kershaw	4	18.3	10	15.9	5	8.1
Lancaster	3	12.0	10	14.1	12	15.2
Laurens	7	25.4	10	12.5	15	18.8
Lee	2	10.0	8	14.6	8	14.2
Lexington	7	12.4	22	13.3	15	9.8
McCormick	2	34.5	3	16.4	3	14.6
Marion	9	28.6	20	21.1	10	10.0
Marlboro	4	15.3	9	11.9	11	14.2
Newberry	3	14.0	4	6.8	3	4.6
Oconee	3	29.7	3	10.1	2	7.0
Orangeburg	12	14.6	34	14.1	41	16.2
Pickens	2	18.7	2	5.7	2	5.6
Richland	40	16.7	96	13.7	74	10.5
Saluda	2	23.3	4	15.6	6	19.8
Spartanburg	9	10.3	21	8.0	25	9.1
Sumter	12	13.3	56	21.7	40	16.3
Union	3	22.1	8	18.3	8	17.4
Williamsburg	6	16.3	20	18.4	21	16.8
York	8	15.6	21	14.0	33	21.4

¹Race of mother

²Rate per 1,000 live births

Table 5.
 Infant, Neonatal and Postneonatal Mortality Rates¹ by Race²
 and Percent Changes from 1997 to 1998
 South Carolina
 (Residence Data)

Infant Mortality			
Year	Total	White	Black & Other
1997	9.5	6.3	15.0
1998	9.5	6.0	15.5
Percent Change	0%	-4.8%	3.3%

Neonatal Mortality			
Year	Total	White	Black & Other
1997	6.7	4.5	10.6
1998	6.7	3.9	11.4
Percent Change	0%	-13.3%	7.5%

Postneonatal Mortality			
Year	Total	White	Black & Other
1997	2.7	1.8	4.4
1998	2.8	2.1	4.1
Percent Change	3.7%	16.7%	-6.8%

¹Rate per 1,000 live births

²Race of mother

Table 6.
 Neonatal Mortality and Neonatal Mortality Rates¹
 South Carolina and Each County, 1998, 1996-1998, 1993-1995
 (Residence Data)

County of Residence	1998		1996-1998		1993-1995	
	Number	Rate	Number	Rate	Number	Rate
South Carolina	358	6.7	996	6.3	1,032	6.6
Abbeville	-	0	4	3.9	10	10.8
Aiken	8	4.5	17	3.1	33	5.8
Allendale	-	0	1	2.0	12	21.8
Anderson	21	9.8	43	6.8	47	7.8
Bamberg	-	0	3	4.7	2	2.9
Barnwell	1	3.0	3	3.1	4	3.9
Beaufort	4	2.4	23	4.8	25	5.1
Berkeley	14	6.9	33	5.6	41	6.2
Calhoun	2	11.9	3	5.8	5	10.1
Charleston	30	6.8	105	8.3	119	8.6
Cherokee	2	2.9	16	7.6	12	6.2
Chester	5	10.5	10	7.2	9	6.4
Chesterfield	6	10.9	10	5.9	18	10.2
Clarendon	6	14.7	12	10.2	10	8.6
Colleton	6	11.6	11	6.9	9	5.5
Darlington	8	8.8	21	7.7	23	8.4
Dillon	3	6.1	9	6.3	7	4.6
Dorchester	8	6.9	26	7.6	20	5.1
Edgefield	3	11.3	9	11.3	4	5.1
Fairfield	6	17.9	7	7.2	3	3.0
Florence	15	8.0	36	6.7	39	7.5
Georgetown	2	2.7	15	7.0	22	10.3
Greenville	25	4.8	61	4.1	73	5.2
Greenwood	8	8.3	30	10.9	27	9.9
Hampton	2	6.4	3	3.4	10	10.8
Horry	8	3.4	40	6.2	37	6.4
Jasper	-	0	3	3.4	9	11.0
Kershaw	4	6.0	14	7.2	7	3.7
Lancaster	4	4.9	15	6.4	21	9.1
Laurens	7	8.1	15	6.0	21	8.7
Lee	4	15.5	11	15.4	5	6.5
Lexington	19	6.3	44	5.0	34	4.2
McCormick	1	12.0	1	3.7	5	17.0
Marion	6	12.6	17	11.8	8	5.2
Marlboro	4	9.2	8	6.3	15	11.5
Newberry	3	5.7	8	5.8	7	5.3
Oconee	6	7.5	13	5.6	9	4.1
Orangeburg	11	8.7	33	9.0	29	7.7
Pickens	10	7.3	24	6.1	20	5.4
Richland	33	7.7	80	6.4	63	5.0
Saluda	7	27.3	10	13.7	9	13.2
Spartanburg	12	3.6	39	4.0	39	4.0
Sumter	13	7.7	56	11.2	45	9.1
Union	3	8.1	11	9.6	6	5.3
Williamsburg	3	6.0	11	7.5	15	9.0
York	15	7.1	32	5.2	44	7.5

¹Rate per 1,000 live births

Table 6-A.
 White¹ Neonatal Mortality and Neonatal Mortality Rates²
 South Carolina and Each County, 1998, 1996-1998, 1993-1995
 (Residence Data)

County of Residence	1998		1996-1998		1993-1995	
	Number	Rate	Number	Rate	Number	Rate
South Carolina	132	3.9	392	3.9	423	4.4
Abbeville	-	0	1	1.5	3	5.2
Aiken	2	1.7	8	2.1	20	5.1
Allendale	-	0	-	0	1	9.3
Anderson	17	10.3	29	5.9	33	7.0
Bamberg	-	0	-	0	1	4.8
Barnwell	1	6.1	2	4.4	1	2.0
Beaufort	2	1.7	11	3.3	12	3.9
Berkeley	6	4.2	13	3.1	15	3.2
Calhoun	-	0	-	0	2	10.2
Charleston	4	1.6	28	3.9	32	4.1
Cherokee	1	2.0	9	5.8	7	5.0
Chester	4	15.4	4	5.4	2	2.9
Chesterfield	1	3.0	1	1.0	5	5.2
Clarendon	-	0	1	2.1	2	4.2
Colleton	2	6.9	3	3.6	3	4.0
Darlington	-	0	3	2.4	4	3.2
Dillon	1	4.8	2	3.5	-	0
Dorchester	2	2.4	11	4.4	9	3.2
Edgefield	-	0	2	4.7	1	2.8
Fairfield	2	18.3	2	6.1	-	0
Florence	3	3.0	8	2.8	15	5.6
Georgetown	-	0	4	3.8	7	7.2
Greenville	12	3.0	29	2.5	44	4.2
Greenwood	6	10.0	13	7.7	6	3.8
Hampton	-	0	1	3.1	5	16.2
Horry	4	2.3	21	4.4	17	4.1
Jasper	-	0	1	2.6	1	3.2
Kershaw	-	0	7	5.3	3	2.4
Lancaster	2	3.6	7	4.3	12	7.9
Laurens	1	1.7	8	4.7	11	6.9
Lee	3	52.6	6	36.4	-	0
Lexington	12	4.9	27	3.8	21	3.2
McCormick	-	0	-	0	2	22.7
Marion	-	0	3	6.1	1	1.9
Marlboro	1	5.8	2	3.8	6	11.3
Newberry	-	0	4	5.0	4	6.0
Oconee	4	5.8	11	5.4	8	4.2
Orangeburg	3	6.8	8	6.4	7	5.7
Pickens	9	7.1	23	6.5	19	5.7
Richland	2	1.1	11	2.0	16	2.8
Saluda	5	29.4	7	14.8	4	10.6
Spartanburg	6	2.5	27	3.7	27	3.9
Sumter	5	6.3	13	5.4	10	4.0
Union	1	4.3	4	5.7	2	3.0
Williamsburg	-	0	-	0	1	2.4
York	8	5.0	17	3.6	21	4.8

¹Race of mother

²Rate per 1,000 live births

Table 6-A. (cont.)
 Black and Other¹ Neonatal Mortality and Neonatal Mortality Rates²
 South Carolina and Each County, 1998, 1996-1998, 1993-1995
 (Residence Data)

County of Residence	1998		1996-1998		1993-1995	
	Number	Rate	Number	Rate	Number	Rate
South Carolina	226	11.4	604	10.5	609	10.1
Abbeville	-	0	3	8.6	7	19.8
Aiken	6	10.2	9	5.2	13	7.1
Allendale	-	0	1	2.4	11	24.9
Anderson	4	8.1	14	9.8	14	10.3
Bamberg	-	0	3	7.2	1	2.0
Barnwell	-	0	1	1.9	3	5.9
Beaufort	2	3.9	12	7.8	13	7.4
Berkeley	8	13.5	20	11.3	26	13.4
Calhoun	2	18.7	3	9.8	3	10.1
Charleston	26	13.8	77	14.1	87	14.5
Cherokee	1	5.7	7	12.8	5	9.4
Chester	1	4.6	6	9.1	7	9.8
Chesterfield	5	23.3	9	13.0	13	16.2
Clarendon	6	22.8	11	15.5	8	11.6
Colleton	4	17.5	8	10.8	6	6.7
Darlington	8	15.9	18	12.3	19	13.0
Dillon	2	7.1	7	8.3	7	7.8
Dorchester	6	19.4	15	15.9	11	9.8
Edgefield	3	25.0	7	18.9	3	7.1
Fairfield	4	17.7	5	7.8	3	4.4
Florence	12	13.7	28	11.2	24	9.4
Georgetown	2	5.4	11	9.9	15	12.8
Greenville	13	10.7	32	9.1	29	8.3
Greenwood	2	5.6	17	16.2	21	18.8
Hampton	2	9.7	2	3.6	5	8.1
Horry	4	6.6	19	11.7	20	12.2
Jasper	-	0	2	4.0	8	15.7
Kershaw	4	18.3	7	11.2	4	6.5
Lancaster	2	8.0	8	11.3	9	11.4
Laurens	6	21.7	7	8.8	10	12.5
Lee	1	5.0	5	9.1	5	8.9
Lexington	7	12.4	17	10.3	13	8.5
McCormick	1	17.2	1	5.5	3	14.6
Marion	6	19.0	14	14.8	7	7.0
Marlboro	3	11.5	6	7.9	9	11.6
Newberry	3	14.0	4	6.8	3	4.6
Oconee	2	19.8	2	6.7	1	3.5
Orangeburg	8	9.7	25	10.4	22	8.7
Pickens	1	9.3	1	2.8	1	2.8
Richland	31	12.9	69	9.8	47	6.7
Saluda	2	23.3	3	11.7	5	16.5
Spartanburg	6	6.8	12	4.6	12	4.4
Sumter	8	8.9	43	16.7	35	14.3
Union	2	14.7	7	16.0	4	8.7
Williamsburg	3	8.1	11	10.1	14	11.2
York	7	13.7	15	10.0	23	14.9

¹Race of mother

²Rate per 1,000 live births

Table 7.
 Postneonatal Mortality and Postneonatal Mortality Rates¹
 South Carolina and Each County, 1998, 1996-1998, 1993-1995
 (Residence Data)

County of Residence	1998		1996-1998		1993-1995	
	Number	Rate	Number	Rate	Number	Rate
South Carolina	153	2.8	433	2.8	478	3.1
Abbeville	-	0	-	0	2	2.2
Aiken	6	3.3	20	3.6	15	2.6
Allendale	-	0	1	2.0	3	5.5
Anderson	11	5.1	19	3.0	17	2.8
Bamberg	2	9.6	2	3.1	3	4.3
Barnwell	1	3.0	3	3.1	2	2.0
Beaufort	2	1.2	6	1.2	17	3.5
Berkeley	4	2.0	10	1.7	33	5.0
Calhoun	1	6.0	1	1.9	2	4.0
Charleston	7	1.6	34	2.7	37	2.7
Cherokee	4	5.8	10	4.8	6	3.1
Chester	3	6.3	6	4.3	9	6.4
Chesterfield	4	7.3	7	4.1	11	6.2
Clarendon	2	4.9	2	1.7	2	1.7
Colleton	2	3.9	5	3.2	6	3.7
Darlington	4	4.4	9	3.3	17	6.2
Dillon	1	2.0	4	2.8	6	4.0
Dorchester	3	2.6	9	2.6	7	1.8
Edgefield	2	7.5	2	2.5	-	0
Fairfield	1	3.0	3	3.1	2	2.0
Florence	3	1.6	18	3.4	20	3.8
Georgetown	4	5.4	9	4.2	5	2.3
Greenville	14	2.7	36	2.4	38	2.7
Greenwood	3	3.1	9	3.3	1	0.4
Hampton	-	0	3	3.4	3	3.3
Horry	8	3.4	22	3.4	15	2.6
Jasper	2	7.1	3	3.4	4	4.9
Kershaw	1	1.5	4	2.0	2	1.1
Lancaster	1	1.2	3	1.3	7	3.0
Laurens	2	2.3	8	3.2	11	4.6
Lee	1	3.9	3	4.2	3	3.9
Lexington	2	0.7	16	1.8	18	2.2
McCormick	1	12.0	2	7.4	-	0
Marion	3	6.3	7	4.9	4	2.6
Marlboro	1	2.3	3	2.3	4	3.1
Newberry	-	0	2	1.4	1	0.8
Oconee	1	1.3	4	1.7	3	1.4
Orangeburg	7	5.5	12	3.3	23	6.1
Pickens	3	2.2	11	2.8	11	3.0
Richland	11	2.6	31	2.5	33	2.6
Saluda	-	0	1	1.4	2	2.9
Spartanburg	8	2.4	27	2.7	32	3.3
Sumter	5	2.9	15	3.0	11	2.2
Union	2	5.4	5	4.4	5	4.5
Williamsburg	3	6.0	9	6.1	9	5.4
York	7	3.3	17	2.8	16	2.7

¹Rate per 1,000 live births

Table 7-A.
 White¹ Postneonatal Mortality and Postneonatal Mortality Rates²
 South Carolina and Each County, 1998, 1996-1998, 1993-1995
 (Residence Data)

County of Residence	1998		1996-1998		1993-1995	
	Number	Rate	Number	Rate	Number	Rate
South Carolina	72	2.1	198	2.0	218	2.3
Abbeville	-	0	-	0	1	1.7
Aiken	3	2.5	10	2.6	8	2.1
Allendale	-	0	-	0	1	9.3
Anderson	7	4.2	11	2.2	12	2.6
Bamberg	-	0	-	0	-	0
Barnwell	-	0	1	2.2	2	3.9
Beaufort	2	1.7	6	1.8	7	2.2
Berkeley	2	1.4	5	1.2	18	3.9
Calhoun	1	16.4	1	4.7	1	5.1
Charleston	4	1.6	17	2.4	12	1.5
Cherokee	1	2.0	4	2.6	4	2.9
Chester	1	3.8	2	2.7	-	0
Chesterfield	2	6.0	2	2.0	6	6.3
Clarendon	2	13.7	2	4.3	-	0
Colleton	2	6.9	3	3.6	2	2.7
Darlington	-	0	1	0.8	4	3.2
Dillon	1	4.8	2	3.5	-	0
Dorchester	1	1.2	2	0.8	5	1.8
Edgefield	1	6.9	1	2.3	-	0
Fairfield	-	0	-	0	-	0
Florence	1	1.0	5	1.8	6	2.2
Georgetown	2	5.4	7	6.7	2	2.0
Greenville	9	2.3	23	2.0	28	2.6
Greenwood	3	5.0	7	4.1	1	0.6
Hampton	-	0	1	3.1	2	6.5
Horry	3	1.7	9	1.9	6	1.4
Jasper	-	0	-	0	2	6.5
Kershaw	1	2.2	1	0.8	1	0.8
Lancaster	-	0	1	0.6	4	2.6
Laurens	1	1.7	5	3.0	6	3.7
Lee	-	0	-	0	-	0
Lexington	2	0.8	11	1.5	16	2.4
McCormick	-	0	-	0	-	0
Marion	-	0	1	2.0	1	1.9
Marlboro	-	0	-	0	2	3.8
Newberry	-	0	2	2.5	1	1.5
Oconee	-	0	3	1.5	2	1.1
Orangeburg	3	6.8	3	2.4	4	3.3
Pickens	2	1.6	10	2.8	10	3.0
Richland	2	1.1	4	0.7	6	1.1
Saluda	-	0	-	0	1	2.6
Spartanburg	5	2.1	18	2.5	19	2.7
Sumter	1	1.3	2	0.8	6	2.4
Union	1	4.3	4	5.7	1	1.5
Williamsburg	-	0	-	0	2	4.7
York	6	3.7	11	2.4	6	1.4

¹Race of mother

²Rate per 1,000 live births

Table 7-A. (cont.)
 Black and Other¹ Postneonatal Mortality and Postneonatal Mortality Rates²
 South Carolina and Each County, 1998, 1996-1998, 1993-1995
 (Residence Data)

County of Residence	1998		1996-1998		1993-1995	
	Number	Rate	Number	Rate	Number	Rate
South Carolina	81	4.1	235	4.1	260	4.3
Abbeville	-	0	-	0	1	2.8
Aiken	3	5.1	10	5.8	7	3.8
Allendale	-	0	1	2.4	2	4.5
Anderson	4	8.1	8	5.6	5	3.7
Bamberg	2	14.4	2	4.8	3	6.1
Barnwell	1	5.7	2	3.8	-	0
Beaufort	-	0	-	0	10	5.7
Berkeley	2	3.4	5	2.8	15	7.7
Calhoun	-	0	-	0	1	3.4
Charleston	3	1.6	17	3.1	25	4.2
Cherokee	3	17.2	6	10.9	2	3.8
Chester	2	9.3	4	6.1	9	12.7
Chesterfield	2	9.3	5	7.2	5	6.2
Clarendon	-	0	-	0	2	2.9
Colleton	-	0	2	2.7	4	4.4
Darlington	4	8.0	8	5.5	13	8.9
Dillon	-	0	2	2.4	6	6.7
Dorchester	2	6.5	7	7.4	2	1.8
Edgefield	1	8.3	1	2.7	-	0
Fairfield	1	4.4	3	4.7	2	2.9
Florence	2	2.3	13	5.2	14	5.5
Georgetown	2	5.4	2	1.8	3	2.6
Greenville	5	4.1	13	3.7	10	2.9
Greenwood	-	0	2	1.9	-	0
Hampton	-	0	2	3.6	1	1.6
Horry	5	8.3	13	8.0	9	5.5
Jasper	2	12.2	3	6.0	2	3.9
Kershaw	-	0	3	4.8	1	1.6
Lancaster	1	4.0	2	2.8	3	3.8
Laurens	1	3.6	3	3.8	5	6.3
Lee	1	5.0	3	5.5	3	5.3
Lexington	-	0	5	3.0	2	1.3
McCormick	1	17.2	2	10.9	-	0
Marion	3	9.5	6	6.3	3	3.0
Marlboro	1	3.8	3	4.0	2	2.6
Newberry	-	0	-	0	-	0
Oconee	1	9.9	1	3.4	1	3.5
Orangeburg	4	4.9	9	3.7	19	7.5
Pickens	1	9.3	1	2.8	1	2.8
Richland	9	3.8	27	3.8	27	3.8
Saluda	-	0	1	3.9	1	3.3
Spartanburg	3	3.4	9	3.4	13	4.7
Sumter	4	4.4	13	5.0	5	2.0
Union	1	7.4	1	2.3	4	8.7
Williamsburg	3	8.1	9	8.3	7	5.6
York	1	2.0	6	4.0	10	6.5

¹Race of mother

²Rate per 1,000 live births

Table 8.
 Leading Causes of Infant Death by Age at Death
 South Carolina, 1998
 (Residence Data)

Causes of Death	Total	Under 1 Day	1-6 Days	7-27 Days	28-364 Days
Total Infant Deaths	511	238	56	64	153
Congenital anomalies (740-759)	93	35	16	15	27
Disorders relating to short gestation, etc. (765)	87	81	4	1	1
Sudden infant death syndrome (798.0)	51	-	-	2	49
Newborn affected by maternal complications of pregnancy (761)	50	48	2	-	-
Newborn affected by complications of placenta, etc. (762)	16	15	-	1	-
Accidents and adverse effects (E800-E949)	16	-	1	-	15
Respiratory distress syndrome (769)	13	3	5	4	1
Infections specific to the perinatal period (771)	13	4	1	8	-
Intrauterine hypoxia and birth asphyxia (768)	9	5	2	2	-
Neonatal hemorrhage (772)	8	-	6	2	-
All other causes	155	47	19	29	60

SOUTH CAROLINA'S HEALTHY START COUNTIES ¹

Infant, Neonatal and Postneonatal Mortality Rates² by Race³

1994, 1995, 1996, 1997, 1998

(Residence Data)

Infant Mortality						
Year	Total		White		Black & Other	
	Number	Rate	Number	Rate	Number	Rate
1994	46	13.1	16	11.1	30	14.4
1995	43	12.8	6	4.3	37	19.0
1996	41	12.6	7	5.2	34	17.8
1997	28	8.2	4	2.7	24	12.4
1998	46	13.7	6	4.2	40	20.6

Neonatal Mortality						
Year	Total		White		Black & Other	
	Number	Rate	Number	Rate	Number	Rate
1994	32	9.1	7	4.9	25	12.0
1995	24	7.1	4	2.8	20	10.3
1996	28	8.6	5	3.7	23	12.0
1997	18	5.3	3	2.1	15	7.7
1998	30	8.9	3	2.1	27	13.9

Postneonatal Mortality						
Year	Total		White		Black & Other	
	Number	Rate	Number	Rate	Number	Rate
1994	14	4.0	9	6.3	5	2.4
1995	19	5.7	2	1.4	17	8.7
1996	13	4.0	2	1.5	11	5.8
1997	10	2.9	1	0.7	9	4.6
1998	16	4.8	3	2.1	13	6.7

¹Healthy Start counties: Chesterfield, Darlington, Dillon, Marion, Marlboro and Williamsburg

²Rate per 1,000 live births

³Race of mother

RATE CALCULATIONS WITH SMALL NUMBERS:

Variations, which result from chance, exist in all statistics. This fact is of particular importance in the calculation of rates with small numbers if events (here, deaths) where these variations are proportionately large in relation to the base figure, the population at risk (here, live births). As an example, small changes in the number of deaths or births in small population areas (here, small counties) could result in large variations in these crude rates. For this reason, ***rates for counties with small populations should be used cautiously.***

SOUTH CAROLINA'S HEALTHY START COUNTIES¹

Infant, Neonatal, and Postneonatal Mortality Rates² by Race³
and Percent Changes from 1997 to 1998
(Residence Data)

Infant Mortality			
Year	Total	White	Black & Other
1997	8.2	2.7	12.4
1998	13.7	4.2	20.6
Percent Change	67.1%	55.6%	66.1%

Neonatal Mortality			
Year	Total	White	Black & Other
1997	5.3	2.1	7.7
1998	8.9	2.1	13.9
Percent Change	67.9%	0%	80.5%

Postneonatal Mortality			
Year	Total	White	Black & Other
1997	2.9	0.7	4.6
1998	4.8	2.1	6.7
Percent Change	65.5%	200.0%	45.7%

¹Healthy Start counties: Chesterfield, Darlington, Dillon, Marion, Marlboro and Williamsburg

²Rate per 1,000 live births

³Race of mother

RATE CALCULATIONS WITH SMALL NUMBERS:

Variations, which result from chance, exist in all statistics. This fact is of particular importance in the calculation of rates with small numbers if events (here, deaths) where these variations are proportionately large in relation to the base figure, the population at risk (here, live births). As an example, small changes in the number of deaths or births in small population areas (here, small counties) could result in large variations in these crude rates. For this reason, ***rates for counties with small populations should be used cautiously.***

COMPARISON OF CHARACTERISTICS FROM BIRTH FILES, 1997-1998
Z-TESTS FOR DIFFERENCES IN PROPORTIONS
SOUTH CAROLINA RESIDENCE DATA ¹

	1997		1998		Z-TEST	P-VALUE
	P	N	P	N		

MOTHER < 18 YEARS						
TOTAL ²	0.0659	52,205	0.0641	53,833	1.1690	0.2424
WHITE	0.0444	33,011	0.0438	34,065	0.3847	0.7004
BLACK & OTHER	0.1030	19,192	0.0993	19,757	1.1956	0.2319

EDUCATION < 12 YEARS						
TOTAL ²	0.2117	52,205	0.2099	53,833	0.7236	0.4693
WHITE	0.1845	33,011	0.1841	34,065	0.1422	0.8869
BLACK & OTHER	0.2583	19,192	0.2542	19,757	0.9261	0.3544

MARITAL STATUS—UNMARRIED						
TOTAL ²	0.2729	52,205	0.2750	53,833	-0.7367	0.4613
WHITE	0.1221	33,011	0.1280	34,065	-2.3132	0.0207
BLACK & OTHER	0.5325	19,192	0.5285	19,757	0.7889	0.4302

< 5 PRENATAL CARE VISITS						
TOTAL ²	0.0492	52,205	0.0458	53,833	2.5751	0.0100
WHITE	0.0263	33,011	0.0246	34,065	1.3934	0.1635
BLACK & OTHER	0.0885	19,192	0.0823	19,757	2.1805	0.0292

PRENATAL CARE BEGAN 1st TRIMESTER						
TOTAL ²	0.7893	52,205	0.8015	53,833	-4.9184	0.0000
WHITE	0.8585	33,011	0.8614	34,065	-1.0749	0.2824
BLACK & OTHER	0.6705	19,192	0.6986	19,757	-5.9674	0.0000

PROPORTION VERY LOW BIRTHWEIGHT						
TOTAL ²	0.0191	52,205	0.0201	53,833	-1.1556	0.2479
WHITE	0.0121	33,011	0.0128	34,065	-0.7620	0.4461
BLACK & OTHER	0.0311	19,192	0.0326	19,757	-0.8944	0.3711

PROPORTION LOW BIRTHWEIGHT						
TOTAL ²	0.0920	52,205	0.0955	53,833	-1.9628	0.0497
WHITE	0.0677	33,011	0.0710	34,065	-1.6553	0.0979
BLACK & OTHER	0.1338	19,192	0.1379	19,757	-1.1863	0.2355

¹All 1998 data is provisional.

²Includes unknown races

COMPARISON OF CHARACTERISTICS FROM BIRTH FILES, 1997-1998
 Z-TESTS FOR DIFFERENCES IN PROPORTIONS
 SOUTH CAROLINA RESIDENCE DATA¹

KESSNER INDEX (FROM BIRTH FILE)	1997			1998			Z-TEST	P-VALUE
	N	Adequate	<Adequate	N	Adequate	<Adequate		
		P	P		P	P		
TOTAL ²	52,205	0.7053	0.2947	53,833	0.7147	0.2576	-3.3575	0.0008
WHITE	33,011	0.7769	0.2231	34,065	0.7762	0.1971	0.2176	0.8278
BLACK & OTHER	19,192	0.5823	0.4178	19,757	0.6088	0.3618	-5.3428	0.0000

¹ All 1998 data is provisional.

² Includes unknown race