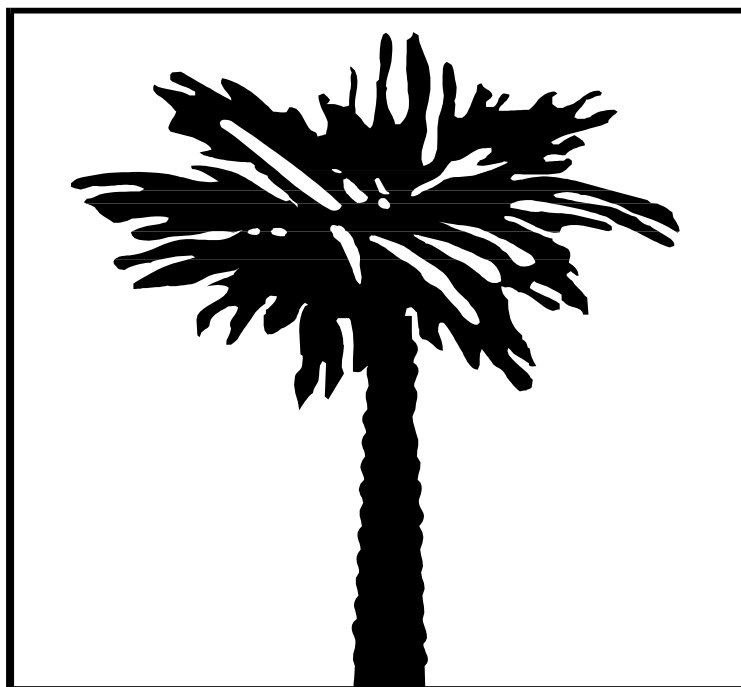


# **Infant Mortality**

## **South Carolina, 1999**

### **(Residence Data)**



**South Carolina Department of Health and Environmental Control**  
**Office of Public Health Statistics and Information Services**  
**Division of Biostatistics**  
**Columbia, South Carolina 29201**  
**April 2001**



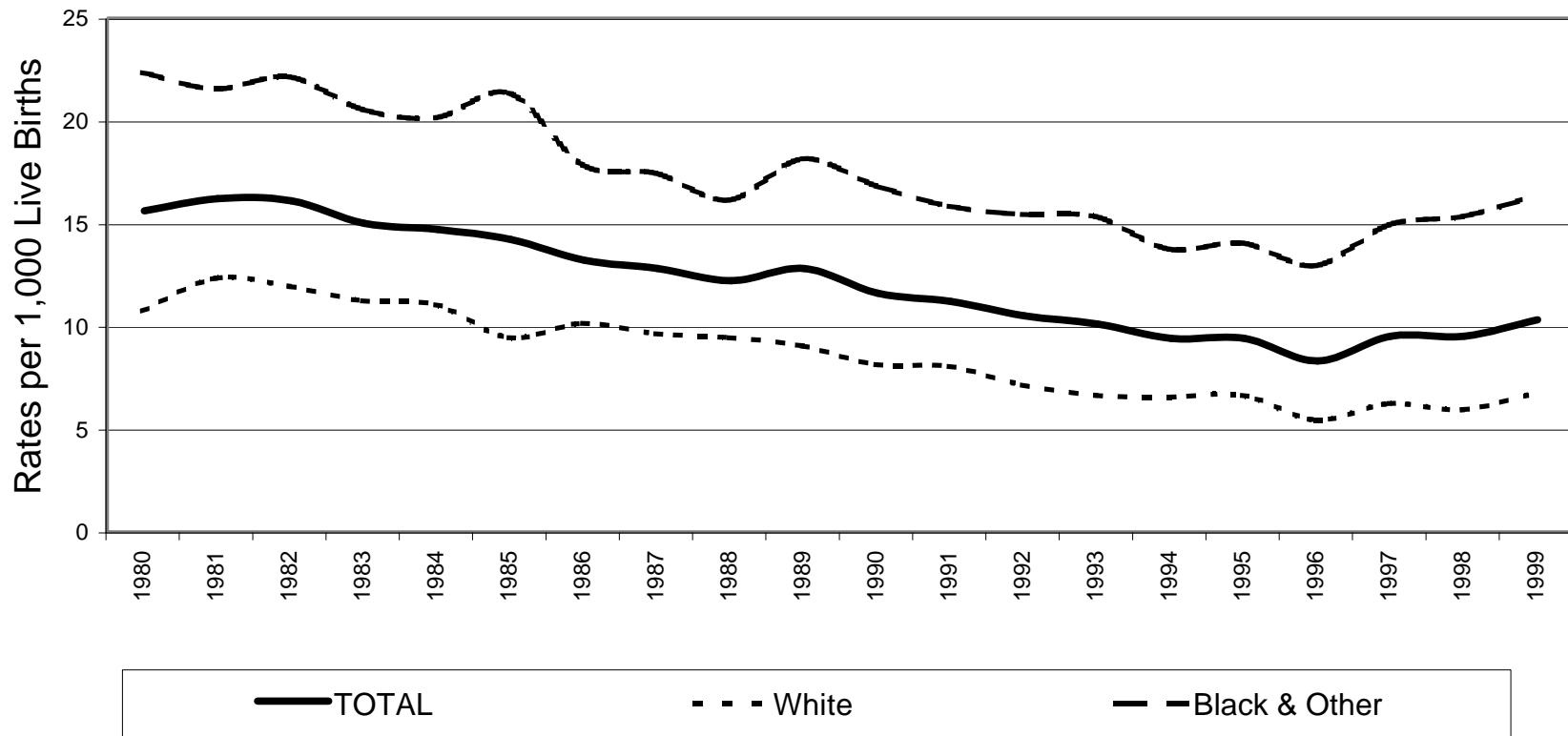
---

## RATE CALCULATIONS WITH SMALL NUMBERS

Variations, which result from chance, exist in all statistics. This fact is of particular importance in the calculation of rates with small numbers of events (here, infant deaths) where these variations are proportionately large in relation to the population at risk (here, live births). As an example, small changes in the number of deaths or births in small population areas (here, small counties) could result in large variations in these crude rates. For this reason, ***rates for counties with small populations should be used cautiously***. Three-year infant mortality rates are calculated to ensure that these rates are less influenced by chance variations, thus making them more stable and more appropriate for trend comparisons.

---

## South Carolina Infant Mortality Rates<sup>1</sup> by Race<sup>2</sup> Residence Data, 1980-1999



	1980	1981	1982	1983	1984	1985	1986	1987	1988	1989	1990	1991	1992	1993	1994	1995	1996	1997	1998	1999
TOTAL	15.6	16.2	16.1	15.0	14.7	14.2	13.2	12.8	12.2	12.8	11.6	11.2	10.5	10.1	9.4	9.4	8.3	9.5	9.5	10.3
White	10.8	12.4	12.0	11.3	11.1	9.5	10.2	9.7	9.5	9.1	8.2	8.1	7.2	6.7	6.6	6.7	5.5	6.3	6.0	6.8
Black & Other	22.4	21.6	22.2	20.6	20.2	21.4	17.9	17.5	16.2	18.2	16.9	15.9	15.5	15.4	13.8	14.1	13.0	15.0	15.4	16.4

<sup>1</sup>Rates per 1,000 live births

<sup>2</sup>Race of infant (1980-1989); Race of mother (1990-1999)

**Table 1.**  
 Infant Mortality Rates<sup>1</sup> with 95% Confidence Intervals<sup>2</sup>  
 South Carolina, 1974-1999  
 (Residence Data)

Year	Number of Live Births	Number of Infant Deaths	Infant Mortality Rate	95% Confidence Intervals
1974	48,432	1,031	21.3	(20.0, 22.6)
1975	46,665	897	19.2	(17.9, 20.5)
1976	47,651	930	19.5	(18.2, 20.8)
1977	49,848	876	17.6	(16.4, 18.8)
1978	49,558	919	18.5	(17.3, 19.7)
1979	50,586	857	16.9	(15.8, 18.0)
1980	51,908	809	15.6	(14.5, 16.7)
1981	51,745	836	16.2	(15.1, 17.3)
1982	51,554	832	16.1	(15.0, 17.2)
1983	50,731	760	15.0	(13.9, 16.1)
1984	50,561	743	14.7	(13.6, 15.8)
1985	51,846	735	14.2	(13.2, 15.2)
1986	51,726	685	13.2	(12.2, 14.2)
1987	52,774	673	12.8	(11.8, 13.8)
1988	55,090	673	12.2	(11.3, 13.1)
1989	57,239	731	12.8	(11.9, 13.7)
1990	58,461	679	11.6	(10.7, 12.5)
1991	57,517	644	11.2	(10.3, 12.1)
1992	56,102	588	10.5	(9.7, 11.3)
1993	53,715	544	10.1	(9.3, 11.0)
1994	51,907	486	9.4	(8.5, 10.2)
1995	50,913	480	9.4	(8.6, 10.2)
1996	51,105	424	8.3	(7.5, 9.1)
1997	52,205	494	9.5	(8.7, 10.3)
1998	53,833	511	9.5	(8.7, 10.3)
1999	54,706	564	10.3	(9.4, 11.2)

**Table 2.**  
 Infant Mortality Rates<sup>1</sup> with 95% Confidence Intervals<sup>2</sup>  
 South Carolina  
 1980-1984, 1985-1989, 1990-1994, 1995-1999  
 (Residence Data)

Years	Number of Live Births	Number of Infant Deaths	Infant Mortality Rate	95% Confidence Intervals
1980-1984	256,499	3,980	15.5	(15.0, 16.0)
1985-1989	268,675	3,497	13.0	(12.6, 13.4)
1990-1994	277,702	2,941	10.6	(10.2, 11.0)
1995-1999	262,762	2,473	9.4	(9.0, 9.8)

<sup>1</sup>Rates per 1,000 live births

<sup>2</sup>  $r \pm 61.981 (r/n)^{1/2}$ , where r = infant mortality rate and n = number of live births

**Table 3.**

Infant, Neonatal and Postneonatal Mortality and Mortality Rates<sup>1</sup> by Race<sup>2</sup>  
 South Carolina  
 1995, 1996, 1997, 1998 and 1999  
 (Residence Data)

Infant Mortality						
Year	Total		White		Black & Other	
	Number	Rate	Number	Rate	Number	Rate
1995	480	9.4	212	6.7	268	14.1
1996	424	8.3	179	5.5	245	13.0
1997	494	9.5	207	6.3	287	15.0
1998	511	9.5	204	6.0	307	15.5
1999	564	10.3	236	6.8	328	16.4

Neonatal Mortality						
Year	Total		White		Black & Other	
	Number	Rate	Number	Rate	Number	Rate
1995	328	6.4	139	4.4	189	9.9
1996	286	5.6	111	3.4	175	9.3
1997	352	6.7	149	4.5	203	10.6
1998	358	6.7	132	3.9	226	11.4
1999	394	7.2	154	4.4	240	12.0

Postneonatal Mortality						
Year	Total		White		Black & Other	
	Number	Rate	Number	Rate	Number	Rate
1995	152	3.0	73	2.3	79	4.1
1996	138	2.7	68	2.1	70	3.7
1997	142	2.7	58	1.8	84	4.4
1998	153	2.8	72	2.1	81	4.1
1999	170	3.1	82	2.4	88	4.4

<sup>1</sup>Rates per 1,000 live births

<sup>2</sup>Race of mother

**Table 4.**  
**Infant Mortality and Infant Mortality Rates<sup>1</sup>**  
**South Carolina and Each County, 1999, 1997-1999, 1994-1996**  
**(Residence Data)**

County of Residence	1999		1997-1999		1994-1996	
	Number	Rate	Number	Rate	Number	Rate
<b>South Carolina</b>	<b>564</b>	<b>10.3</b>	<b>1,569</b>	<b>9.8</b>	<b>1,390</b>	<b>9.0</b>
Abbeville	6	17.7	6	5.8	12	12.3
Aiken	14	7.6	42	7.6	43	7.7
Allendale	3	17.8	5	9.9	11	21.1
Anderson	24	10.9	76	11.8	45	7.3
Bamberg	3	13.5	8	12.4	3	4.4
Barnwell	7	20.3	10	9.6	5	5.3
Beaufort	15	8.6	34	6.8	32	6.6
Berkeley	20	9.1	55	8.9	58	9.4
Calhoun	1	6.0	5	9.8	6	11.7
Charleston	60	13.4	161	12.3	146	11.5
Cherokee	6	8.3	20	9.3	24	12.2
Chester	4	8.8	18	12.8	16	11.9
Chesterfield	6	10.4	18	10.6	25	14.5
Clarendon	7	17.2	18	15.2	11	9.4
Colleton	4	7.3	17	10.6	12	7.5
Darlington	14	14.7	36	12.8	33	12.4
Dillon	1	2.2	8	5.7	15	10.1
Dorchester	11	9.8	34	10.0	32	8.8
Edgefield	8	25.3	17	19.8	5	6.6
Fairfield	5	16.3	14	14.6	3	3.1
Florence	25	13.3	61	11.1	54	10.3
Georgetown	6	7.3	27	11.6	19	9.2
Greenville	36	6.7	105	6.8	112	7.8
Greenwood	14	15.0	37	13.2	34	12.7
Hampton	3	10.2	5	5.6	9	10.2
Horry	19	8.1	56	8.3	62	10.5
Jasper	1	3.7	5	6.0	9	10.7
Kershaw	4	5.6	15	7.3	11	6.0
Lancaster	9	11.3	21	8.8	24	10.5
Laurens	10	11.5	26	10.1	29	12.3
Lee	5	19.1	13	17.0	11	15.2
Lexington	25	8.4	69	7.7	47	5.6
McCormick	2	25.6	4	15.7	5	17.6
Marion	8	16.0	22	14.9	16	10.8
Marlboro	4	9.2	13	10.1	16	12.9
Newberry	8	16.8	14	9.7	8	6.2
Oconee	5	6.3	17	7.3	14	6.3
Orangeburg	16	11.7	52	13.6	41	11.3
Pickens	7	5.2	36	8.9	21	5.7
Richland	51	11.7	136	10.6	78	6.3
Saluda	2	7.8	10	13.0	12	17.9
Spartanburg	27	8.3	73	7.5	62	6.4
Sumter	19	11.4	54	10.8	74	15.0
Union	1	2.5	9	7.9	15	13.3
Williamsburg	10	18.1	20	12.9	25	16.1
York	27	12.6	66	10.4	45	7.7

<sup>1</sup>Rates per 1,000 live births. Rates calculated with 20 or fewer deaths are unreliable and should be used cautiously.

**Table 4-A.**  
 White<sup>1</sup> Infant Mortality and Infant Mortality Rates<sup>2</sup>  
 South Carolina and Each County, 1999, 1997-1999, 1994-1996  
 (Residence Data)

County of Residence	1999		1997-1999		1994-1996	
	Number	Rate	Number	Rate	Number	Rate
<b>South Carolina</b>	<b>236</b>	<b>6.8</b>	<b>647</b>	<b>6.4</b>	<b>602</b>	<b>6.3</b>
Abbeville	3	14.0	3	4.4	3	4.9
Aiken	6	4.8	17	4.5	28	7.2
Allendale	—	0	—	0	2	19.8
Anderson	16	9.2	49	9.8	33	6.9
Bamberg	—	0	—	0	—	0
Barnwell	3	18.5	5	10.2	2	4.3
Beaufort	7	5.8	19	5.5	15	4.7
Berkeley	11	7.2	27	6.3	23	5.3
Calhoun	—	0	1	4.7	2	9.2
Charleston	18	7.0	49	6.6	47	6.5
Cherokee	4	7.4	11	6.8	14	9.7
Chester	—	0	6	8.0	1	1.5
Chesterfield	1	3.0	4	4.0	9	9.4
Clarendon	2	12.3	4	8.6	3	6.3
Colleton	—	0	4	4.7	6	7.7
Darlington	8	17.9	10	7.7	6	4.9
Dillon	1	5.2	3	5.1	2	3.4
Dorchester	7	9.0	16	6.6	15	5.8
Edgefield	—	0	3	6.6	1	2.8
Fairfield	—	0	2	6.3	—	0
Florence	8	8.1	18	6.2	17	6.3
Georgetown	1	2.3	10	8.5	8	8.1
Greenville	25	6.0	59	5.0	77	7.1
Greenwood	8	13.0	22	12.3	10	6.3
Hampton	2	18.7	2	6.3	3	9.5
Horry	9	5.1	24	4.8	31	7.1
Jasper	1	8.0	2	5.4	2	6.0
Kershaw	2	4.0	6	4.2	7	5.7
Lancaster	5	9.4	12	7.3	10	6.6
Laurens	3	4.8	12	6.7	17	10.8
Lee	—	0	3	16.5	3	16.7
Lexington	20	8.4	48	6.6	31	4.5
McCormick	—	0	—	0	2	25.0
Marion	—	0	1	1.9	4	8.1
Marlboro	1	5.6	3	5.7	6	11.8
Newberry	3	10.4	5	5.9	7	10.2
Oconee	4	5.8	13	6.3	12	6.3
Orangeburg	—	0	8	6.3	9	7.4
Pickens	6	4.9	33	9.0	20	6.0
Richland	12	6.4	24	4.3	18	3.2
Saluda	—	0	5	9.7	6	15.7
Spartanburg	16	6.6	45	6.2	41	5.8
Sumter	6	7.4	16	6.6	16	6.5
Union	1	4.0	4	5.6	7	10.4
Williamsburg	2	14.7	2	5.1	2	4.8
York	14	8.9	37	7.8	24	5.5

<sup>1</sup>Race of mother

<sup>2</sup>Rates per 1,000 live births. Rates calculated with 20 or fewer deaths are unreliable and should be used cautiously.

**Table 4-B.**  
**Black and Other<sup>1</sup> Infant Mortality and Infant Mortality Rates<sup>2</sup>**  
**South Carolina and Each County, 1999, 1997-1999, 1994-1996**  
**(Residence Data)**

County of Residence	1999		1997-1999		1994-1996	
	Number	Rate	Number	Rate	Number	Rate
<b>South Carolina</b>	<b>328</b>	<b>16.4</b>	<b>922</b>	<b>15.6</b>	<b>788</b>	<b>13.6</b>
Abbeville	3	24.2	3	8.6	9	25.1
Aiken	8	14.1	25	14.5	15	8.6
Allendale	3	21.4	5	12.0	9	21.4
Anderson	8	17.8	27	18.9	12	8.8
Bamberg	3	20.0	8	18.7	3	6.4
Barnwell	4	22.0	5	9.1	3	6.3
Beaufort	8	15.0	15	9.5	17	10.3
Berkeley	9	13.7	28	15.1	35	19.5
Calhoun	1	10.9	4	13.5	4	13.5
Charleston	42	21.8	112	19.9	99	18.1
Cherokee	2	11.0	9	16.7	10	18.8
Chester	4	18.0	12	18.4	15	22.0
Chesterfield	5	20.0	14	20.2	16	20.9
Clarendon	5	20.3	14	19.3	8	11.6
Colleton	4	15.5	13	17.2	6	7.3
Darlington	6	12.0	26	17.2	27	19.0
Dillon	—	0	5	6.0	13	14.5
Dorchester	4	11.8	18	18.5	17	16.1
Edgefield	8	50.6	14	34.5	4	10.2
Fairfield	5	24.5	12	18.8	3	4.6
Florence	17	19.0	43	16.8	37	14.8
Georgetown	5	13.3	17	14.7	11	10.2
Greenville	11	9.0	46	12.9	35	10.1
Greenwood	6	18.9	15	14.6	24	22.0
Hampton	1	5.3	3	5.2	6	10.7
Horry	10	17.5	32	19.0	31	19.7
Jasper	—	0	3	6.5	7	13.8
Kershaw	2	9.4	9	13.9	4	6.7
Lancaster	4	15.0	9	12.3	14	18.1
Laurens	7	28.5	14	17.8	12	15.5
Lee	5	24.8	10	17.1	8	14.7
Lexington	5	8.7	21	12.3	16	10.4
McCormick	2	36.4	4	24.0	3	14.7
Marion	8	24.4	21	21.9	12	12.1
Marlboro	3	11.7	10	13.1	10	13.7
Newberry	5	26.6	9	15.2	1	1.6
Oconee	1	9.8	4	14.2	2	6.7
Orangeburg	16	17.3	44	17.2	32	13.2
Pickens	1	8.8	3	8.6	1	2.9
Richland	39	15.7	112	15.5	60	8.8
Saluda	2	24.1	5	19.6	6	20.9
Spartanburg	11	13.4	28	11.0	21	7.8
Sumter	13	15.2	38	14.6	58	23.6
Union	—	0	5	11.4	8	17.9
Williamsburg	8	19.2	18	15.6	23	20.2
York	13	23.0	29	18.2	21	14.2

<sup>1</sup>Race of mother

<sup>2</sup>Rates per 1,000 live births. Rates calculated with 20 or fewer deaths are unreliable and should be used cautiously.



**Table 5.**

Infant, Neonatal and Postneonatal Mortality Rates<sup>1</sup> by Race<sup>2</sup>  
and Percent Changes from 1998 to 1999

South Carolina  
(Residence Data)

<b>Infant Mortality</b>			
Year	Total	White	Black & Other
1998	9.5	6.0	15.5
1999	10.3	6.8	16.4
<b>Percent Change</b>	8.4%	13.3%	5.8%

<b>Neonatal Mortality</b>			
Year	Total	White	Black & Other
1998	6.7	3.9	11.4
1999	7.2	4.4	12.0
<b>Percent Change</b>	7.5%	12.8%	5.3%

<b>Postneonatal Mortality</b>			
Year	Total	White	Black & Other
1998	2.8	2.1	4.1
1999	3.1	2.4	4.4
<b>Percent Change</b>	10.7%	14.3%	7.3%

<sup>1</sup>Rates per 1,000 live births

<sup>2</sup>Race of mother

**Table 6.**  
**Neonatal Mortality and Neonatal Mortality Rates<sup>1</sup>**  
**South Carolina and Each County, 1999, 1997-1999, 1994-1996**  
**(Residence Data)**

County of Residence	1999		1997-1999		1994-1996	
	Number	Rate	Number	Rate	Number	Rate
<b>South Carolina</b>	<b>394</b>	<b>7.2</b>	<b>1,104</b>	<b>6.9</b>	<b>950</b>	<b>6.2</b>
Abbeville	4	11.8	4	3.9	10	10.3
Aiken	6	3.3	19	3.5	26	4.6
Allendale	2	11.8	3	5.9	9	17.3
Anderson	17	7.7	53	8.2	32	5.2
Bamberg	—	0	3	4.6	1	1.5
Barnwell	2	5.8	4	3.9	3	3.2
Beaufort	8	4.6	24	4.8	21	4.3
Berkeley	15	6.8	43	7.0	32	5.2
Calhoun	1	6.0	4	7.9	4	7.8
Charleston	40	8.9	121	9.3	112	8.8
Cherokee	5	6.9	12	5.6	17	8.6
Chester	2	4.4	11	7.8	8	5.9
Chesterfield	6	10.4	13	7.7	15	8.7
Clarendon	6	14.7	15	12.6	9	7.7
Colleton	3	5.5	13	8.1	5	3.1
Darlington	10	10.5	26	9.2	18	6.8
Dillon	—	0	5	3.5	9	6.1
Dorchester	6	5.4	24	7.0	22	6.1
Edgefield	8	25.3	15	17.4	5	6.6
Fairfield	5	16.3	12	12.5	1	1.0
Florence	17	9.0	44	8.0	31	5.9
Georgetown	4	4.9	17	7.3	16	7.7
Greenville	29	5.4	74	4.8	72	5.0
Greenwood	13	13.9	30	10.7	30	11.2
Hampton	1	3.4	3	3.4	6	6.8
Horry	13	5.5	35	5.2	43	7.3
Jasper	1	3.7	3	3.6	6	7.2
Kershaw	2	2.8	11	5.3	9	4.9
Lancaster	7	8.8	17	7.2	17	7.4
Laurens	8	9.2	19	7.4	21	8.9
Lee	4	15.3	9	11.7	9	12.4
Lexington	16	5.4	51	5.7	32	3.8
McCormick	2	25.6	3	11.8	4	14.1
Marion	7	14.0	16	10.8	11	7.4
Marlboro	3	6.9	9	7.0	14	11.3
Newberry	3	6.3	9	6.2	5	3.9
Oconee	5	6.3	15	6.4	9	4.1
Orangeburg	14	10.2	39	10.2	24	6.6
Pickens	3	2.2	23	5.7	14	3.8
Richland	33	7.6	93	7.3	56	4.5
Saluda	1	3.9	9	11.7	9	13.5
Spartanburg	17	5.2	43	4.4	33	3.4
Sumter	9	5.4	36	7.2	59	12.0
Union	1	2.5	6	5.2	12	10.7
Williamsburg	9	16.3	14	9.1	17	11.0
York	25	11.7	51	8.0	32	5.5

<sup>1</sup>Rates per 1,000 live births. Rates calculated with 20 or fewer deaths are unreliable and should be used cautiously.

**Table 6-A.**  
**White<sup>1</sup> Neonatal Mortality and Neonatal Mortality Rates<sup>2</sup>**  
**South Carolina and Each County, 1999, 1997-1999, 1994-1996**  
**(Residence Data)**

County of Residence	1999		1997-1999		1994-1996	
	Number	Rate	Number	Rate	Number	Rate
<b>South Carolina</b>	<b>154</b>	<b>4.4</b>	<b>435</b>	<b>4.3</b>	<b>391</b>	<b>4.1</b>
Abbeville	2	9.3	2	2.9	2	3.3
Aiken	2	1.6	7	1.9	17	4.4
Allendale	—	0	—	0	1	9.9
Anderson	12	6.9	36	7.2	25	5.2
Bamberg	—	0	—	0	—	0
Barnwell	—	0	2	4.1	1	2.1
Beaufort	5	4.1	14	4.1	9	2.8
Berkeley	8	5.2	20	4.6	11	2.5
Calhoun	—	0	—	0	1	4.6
Charleston	10	3.9	32	4.3	31	4.3
Cherokee	3	5.5	8	5.0	9	6.3
Chester	—	0	4	5.3	1	1.5
Chesterfield	1	3.0	2	2.0	4	4.2
Clarendon	2	12.3	2	4.3	3	6.3
Colleton	—	0	2	2.4	3	3.9
Darlington	6	13.4	7	5.4	3	2.4
Dillon	—	0	1	1.7	1	1.7
Dorchester	2	2.6	9	3.7	11	4.3
Edgefield	—	0	2	4.4	1	2.8
Fairfield	—	0	2	6.3	—	0
Florence	5	5.1	12	4.1	9	3.3
Georgetown	1	2.3	4	3.4	6	6.1
Greenville	19	4.6	39	3.3	46	4.2
Greenwood	7	11.4	16	9.0	7	4.4
Hampton	—	0	—	0	2	6.3
Horry	6	3.4	17	3.4	22	5.1
Jasper	1	8.0	2	5.4	1	3.0
Kershaw	—	0	3	2.1	7	5.7
Lancaster	5	9.4	11	6.7	7	4.6
Laurens	1	1.6	6	3.4	13	8.2
Lee	—	0	3	16.5	3	16.7
Lexington	12	5.0	34	4.7	19	2.8
McCormick	—	0	—	0	2	25.0
Marion	—	0	1	1.9	2	4.0
Marlboro	—	0	2	3.8	6	11.8
Newberry	2	6.9	4	4.7	4	5.9
Oconee	4	5.8	12	5.8	8	4.2
Orangeburg	—	0	5	3.9	5	4.1
Pickens	3	2.4	22	6.0	14	4.2
Richland	8	4.3	17	3.1	14	2.5
Saluda	—	0	5	9.7	5	13.1
Spartanburg	10	4.1	27	3.7	22	3.1
Sumter	2	2.5	11	4.6	10	4.1
Union	1	4.0	2	2.8	5	7.4
Williamsburg	2	14.7	2	5.1	—	0
York	12	7.6	26	5.5	18	4.1

<sup>1</sup>Race of mother

<sup>2</sup>Rates per 1,000 live births. Rates calculated with 20 or fewer deaths are unreliable and should be used cautiously.

**Table 6-B.**  
**Black and Other<sup>1</sup> Neonatal Mortality and Neonatal Mortality Rates<sup>2</sup>**  
**South Carolina and Each County, 1999, 1997-1999, 1994-1996**  
**(Residence Data)**

County of Residence	1999		1997-1999		1994-1996	
	Number	Rate	Number	Rate	Number	Rate
<b>South Carolina</b>	<b>240</b>	<b>12.0</b>	<b>669</b>	<b>11.3</b>	<b>559</b>	<b>9.7</b>
Abbeville	2	16.1	2	5.7	8	22.3
Aiken	4	7.1	12	6.9	9	5.2
Allendale	2	14.3	3	7.2	8	19.0
Anderson	5	11.1	17	11.9	7	5.1
Bamberg	—	0	3	7.0	1	2.1
Barnwell	2	11.0	2	3.6	2	4.2
Beaufort	3	5.6	10	6.3	12	7.3
Berkeley	7	10.7	23	12.4	21	11.7
Calhoun	1	10.9	4	13.5	3	10.1
Charleston	30	15.6	89	15.8	81	14.8
Cherokee	2	11.0	4	7.4	8	15.0
Chester	2	9.0	7	10.7	7	10.2
Chesterfield	5	20.0	11	15.9	11	14.4
Clarendon	4	16.3	13	18.0	6	8.7
Colleton	3	11.6	11	14.5	2	2.4
Darlington	4	8.0	19	12.6	15	10.5
Dillon	—	0	4	4.8	8	8.9
Dorchester	4	11.8	15	15.4	11	10.4
Edgefield	8	50.6	13	32.0	4	10.2
Fairfield	5	24.5	10	15.7	1	1.5
Florence	12	13.4	32	12.5	22	8.8
Georgetown	3	8.0	13	11.3	10	9.3
Greenville	10	8.2	35	9.8	26	7.5
Greenwood	6	18.9	14	13.6	23	21.1
Hampton	1	5.3	3	5.2	4	7.1
Horry	7	12.3	18	10.7	21	13.4
Jasper	—	0	1	2.2	5	9.9
Kershaw	2	9.4	8	12.4	2	3.4
Lancaster	2	7.5	6	8.2	10	13.0
Laurens	7	28.5	13	16.5	8	10.3
Lee	4	19.8	6	10.3	6	11.0
Lexington	4	6.9	17	10.0	13	8.5
McCormick	2	36.4	3	18.0	2	9.8
Marion	7	21.3	15	15.6	9	9.1
Marlboro	3	11.7	7	9.2	8	10.9
Newberry	1	5.3	5	8.5	1	1.6
Oconee	1	9.8	3	10.6	1	3.3
Orangeburg	14	15.1	34	13.3	19	7.8
Pickens	—	0	1	2.9	—	0
Richland	25	10.0	76	10.5	42	6.2
Saluda	1	12.0	4	15.7	4	13.9
Spartanburg	7	8.5	16	6.3	11	4.1
Sumter	7	8.2	25	9.6	49	20.0
Union	—	0	4	9.2	7	15.6
Williamsburg	7	16.8	12	10.4	17	15.0
York	13	23.0	25	15.7	14	9.5

<sup>1</sup>Race of mother

<sup>2</sup>Rates per 1,000 live births. Rates calculated with 20 or fewer deaths are unreliable and should be used cautiously.

**Table 7.**  
**Postneonatal Mortality and Postneonatal Mortality Rates<sup>1</sup>**  
**South Carolina and Each County, 1999, 1997-1999, 1994-1996**  
**(Residence Data)**

County of Residence	1999		1997-1999		1994-1996	
	Number	Rate	Number	Rate	Number	Rate
<b>South Carolina</b>	<b>170</b>	<b>3.1</b>	<b>465</b>	<b>2.9</b>	<b>440</b>	<b>2.9</b>
Abbeville	2	5.9	2	1.9	2	2.1
Aiken	8	4.4	23	4.2	17	3.0
Allendale	1	5.9	2	4.0	2	3.8
Anderson	7	3.2	23	3.6	13	2.1
Bamberg	3	13.5	5	7.7	2	2.9
Barnwell	5	14.5	6	5.8	2	2.1
Beaufort	7	4.0	10	2.0	11	2.3
Berkeley	5	2.3	12	1.9	26	4.2
Calhoun	—	0	1	2.0	2	3.9
Charleston	20	4.5	40	3.1	34	2.7
Cherokee	1	1.4	8	3.7	7	3.5
Chester	2	4.4	7	5.0	8	5.9
Chesterfield	—	0	5	2.9	10	5.8
Clarendon	1	2.5	3	2.5	2	1.7
Colleton	1	1.8	4	2.5	7	4.4
Darlington	4	4.2	10	3.6	15	5.7
Dillon	1	2.2	3	2.1	6	4.0
Dorchester	5	4.5	10	2.9	10	2.8
Edgefield	—	0	2	2.3	—	0
Fairfield	—	0	2	2.1	2	2.1
Florence	8	4.2	17	3.1	23	4.4
Georgetown	2	2.4	10	4.3	3	1.4
Greenville	7	1.3	31	2.0	40	2.8
Greenwood	1	1.1	7	2.5	4	1.5
Hampton	2	6.8	2	2.2	3	3.4
Horry	6	2.6	21	3.1	19	3.2
Jasper	—	0	2	2.4	3	3.6
Kershaw	2	2.8	4	1.9	2	1.1
Lancaster	2	2.5	4	1.7	7	3.1
Laurens	2	2.3	7	2.7	8	3.4
Lee	1	3.8	4	5.2	2	2.8
Lexington	9	3.0	18	2.0	15	1.8
McCormick	—	0	1	3.9	1	3.5
Marion	1	2.0	6	4.1	5	3.4
Marlboro	1	2.3	4	3.1	2	1.6
Newberry	5	10.5	5	3.5	3	2.3
Oconee	—	0	2	0.9	5	2.3
Orangeburg	2	1.5	13	3.4	17	4.7
Pickens	4	3.0	13	3.2	7	1.9
Richland	18	4.1	43	3.4	22	1.8
Saluda	1	3.9	1	1.3	3	4.5
Spartanburg	10	3.1	30	3.1	29	3.0
Sumter	10	6.0	18	3.6	15	3.1
Union	—	0	3	2.6	3	2.7
Williamsburg	1	1.8	6	3.9	8	5.2
York	2	0.9	15	2.4	13	2.2

<sup>1</sup>Rates per 1,000 live births. Rates calculated with 20 or fewer deaths are unreliable and should be used cautiously.

**Table 7-A.**

White<sup>1</sup> Postneonatal Mortality and Postneonatal Mortality Rates<sup>2</sup>  
 South Carolina and Each County, 1999, 1997-1999, 1994-1996  
 (Residence Data)

County of Residence	1999		1997-1999		1994-1996	
	Number	Rate	Number	Rate	Number	Rate
<b>South Carolina</b>	<b>82</b>	<b>2.4</b>	<b>212</b>	<b>2.1</b>	<b>211</b>	<b>2.2</b>
Abbeville	1	4.7	1	1.5	1	1.6
Aiken	4	3.2	10	2.7	11	2.8
Allendale	—	0	—	0	1	9.9
Anderson	4	2.3	13	2.6	8	1.7
Bamberg	—	0	—	0	—	0
Barnwell	3	18.5	3	6.1	1	2.1
Beaufort	2	1.7	5	1.5	6	1.9
Berkeley	3	2.0	7	1.6	12	2.8
Calhoun	—	0	1	4.7	1	4.6
Charleston	8	3.1	17	2.3	16	2.2
Cherokee	1	1.8	3	1.9	5	3.5
Chester	—	0	2	2.7	—	0
Chesterfield	—	0	2	2.0	5	5.2
Clarendon	—	0	2	4.3	—	0
Colleton	—	0	2	2.4	3	3.9
Darlington	2	4.5	3	2.3	3	2.4
Dillon	1	5.2	2	3.4	1	1.7
Dorchester	5	6.4	7	2.9	4	1.6
Edgefield	—	0	1	2.2	—	0
Fairfield	—	0	—	0	—	0
Florence	3	3.0	6	2.1	8	2.9
Georgetown	—	0	6	5.1	2	2.0
Greenville	6	1.4	20	1.7	31	2.9
Greenwood	1	1.6	6	3.4	3	1.9
Hampton	2	18.7	2	6.3	1	3.2
Horry	3	1.7	7	1.4	9	2.1
Jasper	—	0	—	0	1	3.0
Kershaw	2	4.0	3	2.1	—	0
Lancaster	—	0	1	0.6	3	2.0
Laurens	2	3.2	6	3.4	4	2.5
Lee	—	0	—	0	—	0
Lexington	8	3.3	14	1.9	12	1.8
McCormick	—	0	—	0	—	0
Marion	—	0	—	0	2	4.0
Marlboro	1	5.6	1	1.9	—	0
Newberry	1	3.5	1	1.2	3	4.4
Oconee	—	0	1	0.5	4	2.1
Orangeburg	—	0	3	2.4	4	3.3
Pickens	3	2.4	11	3.0	6	1.8
Richland	4	2.1	7	1.3	4	0.7
Saluda	—	0	—	0	1	2.6
Spartanburg	6	2.5	18	2.5	19	2.7
Sumter	4	4.9	5	2.1	6	2.4
Union	—	0	2	2.8	2	3.0
Williamsburg	—	0	—	0	2	4.8
York	2	1.3	11	2.3	6	1.4

<sup>1</sup>Race of mother<sup>2</sup>Rates per 1,000 live births. Rates calculated with 20 or fewer deaths are unreliable and should be used cautiously.

**Table 7-B.**

Black and Other<sup>1</sup> Postneonatal Mortality and Postneonatal Mortality Rates<sup>2</sup>  
 South Carolina and Each County, 1999, 1997-1999, 1994-1996  
 (Residence Data)

County of Residence	1999		1997-1999		1994-1996	
	Number	Rate	Number	Rate	Number	Rate
<b>South Carolina</b>	<b>88</b>	<b>4.4</b>	<b>253</b>	<b>4.3</b>	<b>229</b>	<b>4.0</b>
Abbeville	1	8.1	1	2.9	1	2.8
Aiken	4	7.1	13	7.5	6	3.5
Allendale	1	7.1	2	4.8	1	2.4
Anderson	3	6.7	10	7.0	5	3.7
Bamberg	3	20.0	5	11.7	2	4.3
Barnwell	2	11.0	3	5.5	1	2.1
Beaufort	5	9.4	5	3.2	5	3.0
Berkeley	2	3.0	5	2.7	14	7.8
Calhoun	—	0	—	0	1	3.4
Charleston	12	6.2	23	4.1	18	3.3
Cherokee	—	0	5	9.3	2	3.8
Chester	2	9.0	5	7.7	8	11.7
Chesterfield	—	0	3	4.3	5	6.5
Clarendon	1	4.1	1	1.4	2	2.9
Colleton	1	3.9	2	2.6	4	4.8
Darlington	2	4.0	7	4.6	12	8.4
Dillon	—	0	1	1.2	5	5.6
Dorchester	—	0	3	3.1	6	5.7
Edgefield	—	0	1	2.5	—	0
Fairfield	—	0	2	3.1	2	3.0
Florence	5	5.6	11	4.3	15	6.0
Georgetown	2	5.3	4	3.5	1	0.9
Greenville	1	0.8	11	3.1	9	2.6
Greenwood	—	0	1	1.0	1	0.9
Hampton	—	0	—	0	2	3.6
Horry	3	5.3	14	8.3	10	6.4
Jasper	—	0	2	4.3	2	3.9
Kershaw	—	0	1	1.5	2	3.4
Lancaster	2	7.5	3	4.1	4	5.2
Laurens	—	0	1	1.3	4	5.2
Lee	1	5.0	4	6.8	2	3.7
Lexington	1	1.7	4	2.3	3	2.0
McCormick	—	0	1	6.0	1	4.9
Marion	1	3.0	6	6.3	3	3.0
Marlboro	—	0	3	3.9	2	2.7
Newberry	4	21.3	4	6.8	—	0
Oconee	—	0	1	3.5	1	3.3
Orangeburg	2	2.2	10	3.9	13	5.4
Pickens	1	8.8	2	5.7	1	2.9
Richland	14	5.6	36	5.0	18	2.7
Saluda	1	12.0	1	3.9	2	7.0
Spartanburg	4	4.9	12	4.7	10	3.7
Sumter	6	7.0	13	5.0	9	3.7
Union	—	0	1	2.3	1	2.2
Williamsburg	1	2.4	6	5.2	6	5.3
York	—	0	4	2.5	7	4.7

<sup>1</sup>Race of mother<sup>2</sup>Rates per 1,000 live births. Rates calculated with 20 or fewer deaths are unreliable and should be used cautiously.

**Table 8.**  
**Leading Causes of Infant Death by Age at Death**  
**South Carolina, 1999**  
**(Residence Data)**

Causes of Death (ICD-10 Codes)	Total	Under 1 Day	1-6 Days	7-27 Days	28-364 Days
<b>Total Infant Deaths</b>	<b>564</b>	<b>244</b>	<b>78</b>	<b>72</b>	<b>170</b>
Congenital malformations, deformations, etc. (Q00-Q99)	94	37	16	12	29
Disorders relating to short gestation and low birthweight, NEC (P07)	92	85	5	1	1
Sudden infant death syndrome (R95)	51	0	1	3	47
Newborn affected by maternal complications of pregnancy (P01)	38	35	3	0	0
Respiratory distress of newborn (P22)	28	13	9	6	0
Newborn affected by complications of placenta, etc. (P02)	25	19	4	2	0
Accidents (V01-X59, Y85-Y86)	24	0	0	3	21
Bacterial sepsis of newborn (P36)	18	9	2	7	0
Diseases of circulatory system (I00-I99)	12	1	2	4	5
Intrauterine hypoxia and birth asphyxia (P20-P21)	10	3	4	3	0
All other causes	172	42	32	31	67



**Table 9.**

Comparison of Characteristics from Birth Files, by Race<sup>1</sup>  
 Z-tests for differences in proportions  
 South Carolina, 1998 to 1999  
 (Residence Data)

	1998		1999		Z-TEST	P-VALUE
	P	N	P	N		

MOTHER < 18 YEARS						
TOTAL <sup>2</sup>	0.0641	53,833	0.0595	54,706	3.1634	0.0016
White	0.0438	34,065	0.0402	34,683	2.3192	0.0204
Black & Other	0.0993	19,757	0.0929	20,004	2.1566	0.0310

EDUCATION < 12 YEARS						
TOTAL <sup>2</sup>	0.2099	53,833	0.2067	54,706	1.2992	0.1939
White	0.1841	34,065	0.1831	34,683	0.3396	0.7342
Black & Other	0.2542	19,757	0.2476	20,004	1.5267	0.1268

MARITAL STATUS—UNMARRIED						
TOTAL <sup>2</sup>	0.2750	53,833	0.2711	54,706	1.4196	0.1557
White	0.1280	34,065	0.1270	34,683	0.3978	0.6908
Black & Other	0.5285	19,757	0.5213	20,004	1.4425	0.1492

< 5 PRENATAL CARE VISITS						
TOTAL <sup>2</sup>	0.0458	53,833	0.0461	54,706	-0.2161	0.8289
White	0.0246	34,065	0.0268	34,683	-1.8338	0.0667
Black & Other	0.0823	19,757	0.0795	20,004	1.0296	0.3032

PRENATAL CARE BEGAN 1st TRIMESTER						
TOTAL <sup>2</sup>	0.8015	53,833	0.7936	54,706	3.2427	0.0012
White	0.8614	34,065	0.8496	34,683	4.4101	0.0000
Black & Other	0.6986	19,757	0.6971	20,004	0.3316	0.7402

PROPORTION VERY LOW BIRTHWEIGHT						
TOTAL <sup>2</sup>	0.0201	53,833	0.0205	54,706	-0.5017	0.6159
White	0.0128	34,065	0.0127	34,683	0.0975	0.9223
Black & Other	0.0326	19,757	0.0340	20,004	-0.7755	0.4381

PROPORTION LOW BIRTHWEIGHT						
TOTAL <sup>2</sup>	0.0955	53,833	0.0986	54,706	-1.7048	0.0882
White	0.0710	34,065	0.0723	34,683	-0.6619	0.5080
Black & Other	0.1379	19,757	0.1443	20,004	-1.8313	0.0671

<sup>1</sup>Race of mother

<sup>2</sup>Includes unknown races

**Table 9. (continued)**

Comparison of Characteristics from Birth Files, by Race<sup>1</sup>  
 Z-tests for differences in proportions  
 South Carolina, 1998 to 1999  
 (Residence Data)

	1998		1999		Z-TEST	P-VALUE
	P	N	P	N		

ADEQUATE KESSNER INDEX						
TOTAL <sup>2</sup>	0.7147	53,833	0.7081	54,706	2.3783	0.0174
White	0.7762	34,065	0.7663	34,683	3.1015	0.0019
Black & Other	0.6088	19,757	0.6077	20,004	0.2286	0.8192

LESS THAN ADEQUATE KESSNER INDEX						
TOTAL <sup>2</sup>	0.2576	53,833	0.2608	54,706	-1.1896	0.2342
White	0.1971	34,065	0.2042	34,683	-2.3238	0.0205
Black & Other	0.3618	19,757	0.3591	20,004	0.5748	0.5654

<sup>1</sup>Race of mother

<sup>2</sup>Includes unknown races

**Table 10.**  
 Infant Mortality Rates<sup>1</sup> by Race<sup>2</sup> and Birthweight<sup>3</sup> Group  
 South Carolina  
 1997, 1998 and 1999  
 (Residence Data)

<b>Infant Mortality for Very Low Birthweight (0-1499 grams)</b>						
	Total		White		Black & Other	
Year	Number	Rate	Number	Rate	Number	Rate
1997	286	287.1	98	245.0	188	315.4
1998	299	276.9	105	241.4	194	300.8
1999	319	284.6	108	245.5	211	309.8

<b>Infant Mortality for Intermediate Low Birthweight (1500-2499 grams)</b>						
	Total		White		Black & Other	
Year	Number	Rate	Number	Rate	Number	Rate
1997	63	16.5	31	16.9	32	16.2
1998	67	16.5	23	11.6	44	21.2
1999	71	16.6	35	16.9	36	16.3

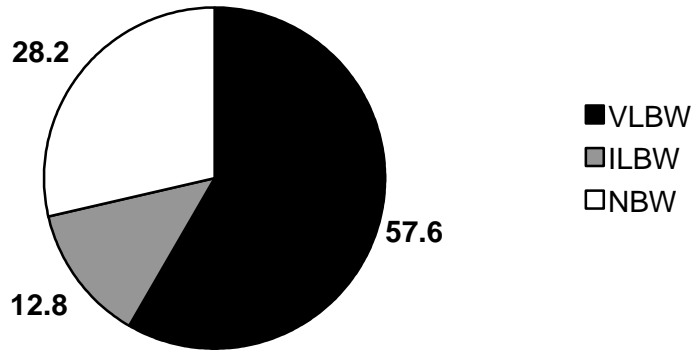
<b>Infant Mortality for Normal Birthweight (2500+ grams)</b>						
	Total		White		Black & Other	
Year	Number	Rate	Number	Rate	Number	Rate
1997	138	2.9	73	2.4	65	3.9
1998	139	2.9	74	2.3	65	3.8
1999	166	3.4	90	2.8	76	4.4

<sup>1</sup>Rates per 1,000 live births

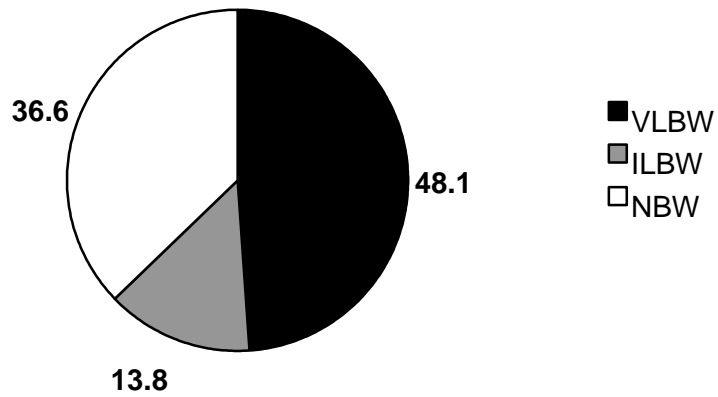
<sup>2</sup>Race of mother

<sup>3</sup>Does not include missing birthweights

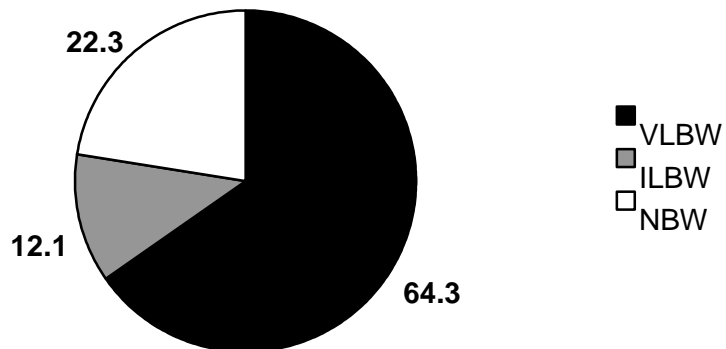
**Figure 1.**  
Percentage of Infant Deaths by Birthweight<sup>1</sup> Group  
South Carolina, 1997-1999 Residence Data



**Figure 1-A.**  
Percentage of Infant Deaths to White Mothers by Birthweight<sup>1</sup> Group  
South Carolina, 1997-1999 Residence Data



**Figure 1-B.**  
Percentage of Infant Deaths to Black and Other Mothers by Birthweight<sup>1</sup> Group  
South Carolina, 1997-1999 Residence Data



<sup>1</sup>Does not include missing birthweights