



# **Infant Mortality and Selected Birth Characteristics**



## **2001 South Carolina Residence Data**

**August 2002**

**South Carolina Department of Health and Environmental Control  
Office of Public Health Statistics and Information Services  
Division of Biostatistics  
2600 Bull Street  
Columbia, SC 29201**

**Phone: (803)898-3649  
Fax: (803)898-3661**



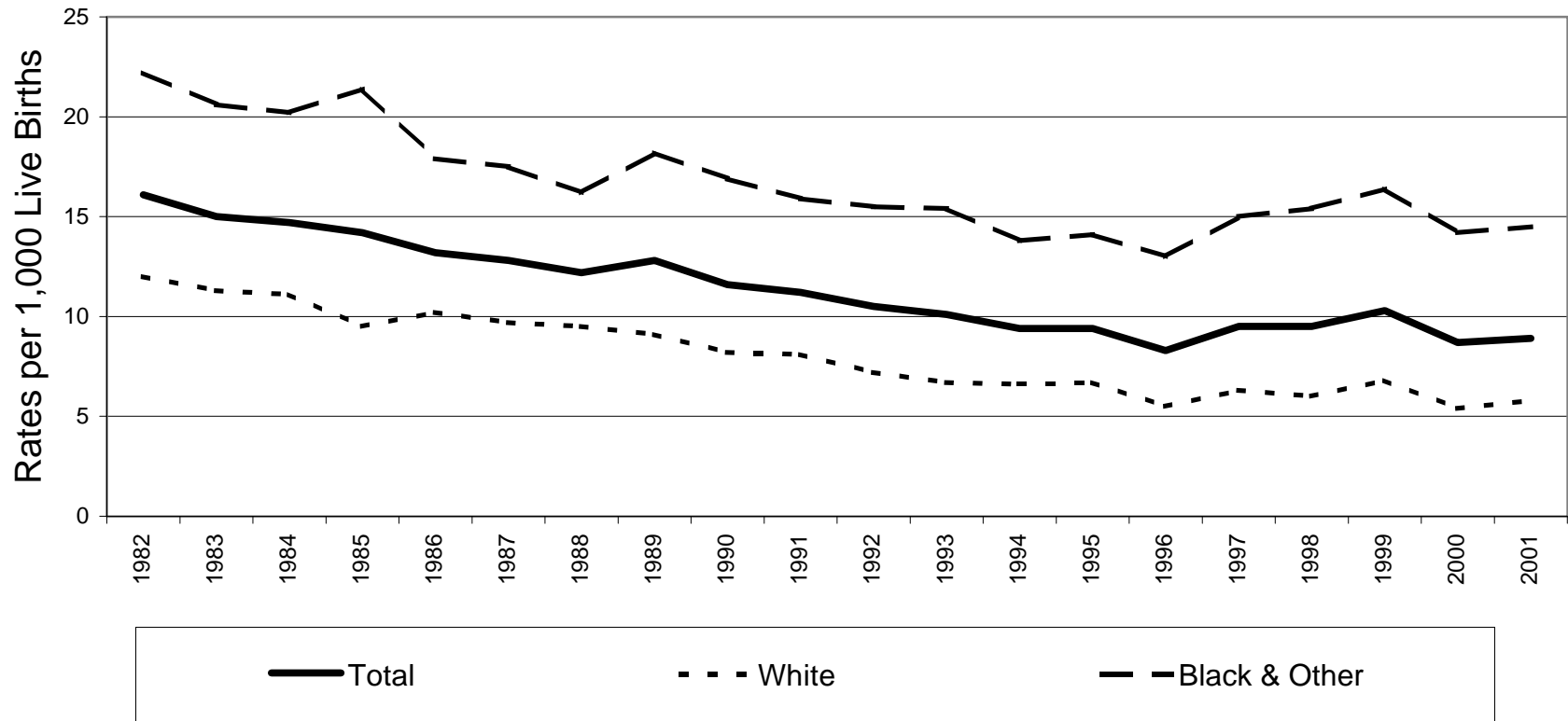
---

## RATE CALCULATIONS WITH SMALL NUMBERS

Variations, which result from chance, exist in all statistics. This fact is of particular importance in the calculation of rates with small numbers of events (here, infant deaths) where these variations are proportionately large in relation to the population at risk (here, live births). As an example, small changes in the number of deaths or births in small population areas (here, small counties) could result in large variations in these crude rates. For this reason, ***rates for counties with small populations should be used cautiously***. Three-year infant mortality rates are calculated to ensure that these rates are less influenced by chance variations, thus making them more stable and more appropriate for trend comparisons.

---

## South Carolina Infant Mortality Rates<sup>1</sup> by Race<sup>2</sup> Residence Data, 1982-2001



	1982	1983	1984	1985	1986	1987	1988	1989	1990	1991	1992	1993	1994	1995	1996	1997	1998	1999	2000	2001
TOTAL	16.1	15.0	14.7	14.2	13.2	12.8	12.2	12.8	11.6	11.2	10.5	10.1	9.4	9.4	8.3	9.5	9.5	10.3	8.7	8.9
White	12.0	11.3	11.1	9.5	10.2	9.7	9.5	9.1	8.2	8.1	7.2	6.7	6.6	6.7	5.5	6.3	6.0	6.8	5.4	5.8
Black & Other	22.2	20.6	20.2	21.4	17.9	17.5	16.2	18.2	16.9	15.9	15.5	15.4	13.8	14.1	13.0	15.0	15.4	16.4	14.2	14.5

<sup>1</sup>Rates per 1,000 live births

<sup>2</sup>Race of infant (1981-1989); Race of mother (1990-2001)

**Table 1.**  
 Infant Mortality Rates<sup>1</sup> with 95% Confidence Intervals<sup>2</sup>  
 South Carolina, 1982-2001  
 (Residence Data)

Year	Number of Live Births	Number of Infant Deaths	Infant Mortality Rate	95% Confidence Intervals
1982	51,554	832	16.1	(15.0, 17.2)
1983	50,731	760	15.0	(13.9, 16.1)
1984	50,561	743	14.7	(13.6, 15.8)
1985	51,846	735	14.2	(13.2, 15.2)
1986	51,726	685	13.2	(12.2, 14.2)
1987	52,774	673	12.8	(11.8, 13.8)
1988	55,090	673	12.2	(11.3, 13.1)
1989	57,239	731	12.8	(11.9, 13.7)
1990	58,461	679	11.6	(10.7, 12.5)
1991	57,517	644	11.2	(10.3, 12.1)
1992	56,102	588	10.5	(9.7, 11.3)
1993	53,715	544	10.1	(9.3, 11.0)
1994	51,907	486	9.4	(8.5, 10.2)
1995	50,913	480	9.4	(8.6, 10.2)
1996	51,105	424	8.3	(7.5, 9.1)
1997	52,205	494	9.5	(8.7, 10.3)
1998	53,833	511	9.5	(8.7, 10.3)
1999	54,706	564	10.3	(9.4, 11.2)
2000	55,964	488	8.7	(7.9, 9.5)
2001	55,748	496	8.9	(8.1, 9.7)

**Table 2.**  
 Infant Mortality Rates<sup>1</sup> with 95% Confidence Intervals<sup>2</sup>  
 South Carolina  
 1982-1986, 1987-1991, 1992-1996, 1997-2001  
 (Residence Data)

Years	Number of Live Births	Number of Infant Deaths	Infant Mortality Rate	95% Confidence Intervals
1982-1986	256,418	3,755	14.6	(14.2, 15.1)
1987-1991	281,081	3,400	12.1	(11.7, 12.5)
1992-1996	263,742	2,522	9.6	( 9.2, 9.9)
1997-2001	272,456	2,553	9.4	( 9.0, 9.7)

<sup>1</sup>Rates per 1,000 live births

<sup>2</sup>  $r \pm 61.981 (r/n)^{1/2}$ , where r = infant mortality rate and n = number of live births

**Table 3.**

Infant, Neonatal and Postneonatal Mortality and Mortality Rates<sup>1</sup> by Race<sup>2</sup>  
 South Carolina  
 1997, 1998, 1999, 2000 and 2001  
 (Residence Data)

Infant Mortality									
	Total			White			Black & Other		
Year	Number of Live Birth	Number of Infant Death	Rate	Number of Live Birth	Number of Infant Death	Rate	Number of Live Birth	Number of Infant Death	Rate
1997	52205*	494	9.5	33,011	207	6.3	19,192	287	15.0
1998	53833*	511	9.5	34,065	204	6.0	19,757	307	15.5
1999	54706*	564	10.3	34,683	236	6.8	20,004	328	16.4
2000	55964*	488	8.7	35,146	192	5.5	20,803	296	14.2
2001	55748*	496	8.9	35,731	206	5.8	20,008	290	14.5

Neonatal Mortality (<28 days)									
	Total			White			Black & Other		
Year	Number of Live Birth	Number of Infant Death	Rate	Number of Live Birth	Number of Infant Death	Rate	Number of Live Birth	Number of Infant Death	Rate
1997	52205*	352	6.7	33,011	149	4.5	19,192	203	10.6
1998	53833*	358	6.7	34,065	132	3.9	19,757	226	11.4
1999	54706*	394	7.2	34,683	154	4.4	20,004	240	12.0
2000	55964*	340	6.1	35,146	135	3.8	20,803	205	9.9
2001	55748*	337	6.0	35,731	135	3.8	20,008	202	10.1

Postneonatal Mortality (28-364 days)									
	Total			White			Black & Other		
Year	Number of Live Birth	Number of Infant Death	Rate	Number of Live Birth	Number of Infant Death	Rate	Number of Live Birth	Number of Infant Death	Rate
1997	52205*	142	2.7	33,011	58	1.8	19,192	84	4.4
1998	53833*	153	2.8	34,065	72	2.1	19,757	81	4.1
1999	54706*	170	3.1	34,683	82	2.4	20,004	88	4.4
2000	55964*	148	2.6	35,146	57	1.6	20,803	91	4.4
2001	55748*	159	2.9	35,731	71	2.0	20,008	88	4.4

<sup>1</sup>Rates per 1,000 live births

<sup>2</sup>Race of mother

<sup>3</sup>Includes unknown race

**Table 4.**  
**Infant Mortality and Infant Mortality Rates<sup>1</sup>**  
**South Carolina and Each County, 2001, 1999-2001, 1996-1998**  
**(Residence Data)**

County of Residence	2001		1999-2001		1996-1998	
	Number	Rate	Number	Rate	Number	Rate
<b>South Carolina</b>	496	8.9	1,548	9.3	1,429	9.1
Abbeville	4	10.8	13	12.4	4	3.9
Aiken	23	12.2	54	9.7	37	6.7
Allendale	2	11.0	8	15.3	2	3.9
Anderson	14	6.2	59	8.9	62	9.8
Bamberg	3	14.2	9	13.5	5	7.8
Barnwell	5	14.7	19	18.8	6	6.1
Beaufort	10	5.1	32	5.7	29	6.0
Berkeley	20	9.1	55	8.5	43	7.2
Calhoun	2	12.4	5	9.6	4	7.7
Charleston	46	10.1	136	10.0	139	11.0
Cherokee	17	24.6	27	12.3	26	12.4
Chester	2	4.6	11	7.9	16	11.5
Chesterfield	5	8.7	18	10.2	17	10.1
Clarendon	4	8.9	17	13.1	14	11.9
Colleton	8	13.2	13	7.4	16	10.1
Darlington	15	15.9	40	14.1	30	11.0
Dillon	6	12.6	14	9.6	13	9.1
Dorchester	14	11.4	38	10.6	35	10.2
Edgefield	2	7.2	15	17.0	11	13.8
Fairfield	-	0.0	7	7.2	10	10.3
Florence	25	13.1	73	12.9	54	10.1
Georgetown	9	11.2	27	11.3	24	11.1
Greenville	32	5.8	97	6.0	97	6.5
Greenwood	6	6.6	30	10.7	39	14.2
Hampton	-	0.0	8	8.8	6	6.8
Horry	22	8.5	64	8.5	62	9.6
Jasper	6	17.7	9	10.1	6	6.9
Kershaw	8	11.5	15	7.0	18	9.2
Lancaster	6	7.5	27	11.1	18	7.7
Laurens	9	11.2	25	10.0	23	9.3
Lee	3	10.6	12	14.8	14	19.6
Lexington	19	6.5	70	7.9	60	6.8
McCormick	1	12.5	4	15.7	3	11.2
Marion	9	18.1	22	14.4	24	16.7
Marlboro	5	12.5	16	12.6	11	8.6
Newberry	8	15.3	18	12.0	10	7.2
Oconee	4	5.1	16	6.8	17	7.3
Orangeburg	15	11.9	52	13.2	45	12.3
Pickens	7	5.2	21	5.2	35	9.0
Richland	29	6.8	119	9.1	111	8.8
Saluda	3	11.2	7	9.0	11	15.1
Spartanburg	21	6.1	70	7.0	66	6.7
Sumter	14	8.7	48	9.5	71	14.2
Union	2	5.4	9	7.9	16	14.0
Williamsburg	11	20.4	29	17.7	20	13.6
York	20	8.6	69	10.2	49	7.9

<sup>1</sup>Rates per 1,000 live births. Rates calculated with 20 or fewer deaths are unreliable and should be used cautiously.

**Table 4-A.**  
**White<sup>1</sup> Infant Mortality and Infant Mortality Rates<sup>2</sup>**  
**South Carolina and Each County, 2001, 1999-2001, 1996-1998**  
**(Residence Data)**

County of Residence	2001		1999-2001		1996-1998	
	Number	Rate	Number	Rate	Number	Rate
<b>South Carolina</b>	206	5.8	634	6.0	590	5.9
Abbeville	1	4.1	4	5.8	1	1.5
Aiken	13	10.1	29	7.7	18	4.7
Allendale	-	0.0	2	25.0	-	0.0
Anderson	10	5.6	37	7.1	40	8.2
Bamberg	-	0.0	-	0.0	-	0.0
Barnwell	-	0.0	5	11.1	3	6.6
Beaufort	3	2.2	12	3.0	17	5.1
Berkeley	14	9.0	31	6.8	18	4.3
Calhoun	1	11.9	1	4.2	1	4.7
Charleston	13	4.9	40	5.1	45	6.3
Cherokee	9	17.7	17	10.4	13	8.4
Chester	1	4.4	2	2.8	6	8.1
Chesterfield	3	8.6	6	5.9	3	3.0
Clarendon	-	0.0	2	4.0	3	6.4
Colleton	1	3.2	1	1.1	6	7.1
Darlington	4	8.9	14	10.4	4	3.2
Dillon	-	0.0	1	1.5	4	7.0
Dorchester	6	6.8	19	7.5	13	5.2
Edgefield	-	0.0	2	4.2	3	7.0
Fairfield	-	0.0	1	3.2	2	6.1
Florence	9	8.8	21	7.1	13	4.6
Georgetown	2	4.6	5	3.9	11	10.5
Greenville	17	4.0	64	5.1	52	4.5
Greenwood	2	3.5	11	6.3	20	11.8
Hampton	-	0.0	2	5.6	2	6.1
Horry	6	3.1	24	4.3	30	6.2
Jasper	5	32.9	8	19.1	1	2.6
Kershaw	7	14.5	11	7.3	8	6.0
Lancaster	2	3.6	13	7.9	8	4.9
Laurens	5	8.7	12	6.8	13	7.7
Lee	-	0.0	1	5.4	6	36.4
Lexington	14	6.0	53	7.4	38	5.3
McCormick	-	0.0	-	0.0	-	0.0
Marion	3	16.0	3	5.3	4	8.1
Marlboro	-	0.0	4	7.7	2	3.8
Newberry	2	6.3	7	7.8	6	7.5
Oconee	4	5.7	14	6.7	14	6.9
Orangeburg	1	2.7	4	3.3	11	8.8
Pickens	7	5.6	20	5.4	33	9.3
Richland	6	3.1	28	4.9	15	2.7
Saluda	-	0.0	-	0.0	7	14.8
Spartanburg	18	7.0	46	6.1	45	6.2
Sumter	5	6.5	14	5.8	15	6.2
Union	2	8.3	4	5.7	8	11.4
Williamsburg	-	0.0	2	4.8	-	0.0
York	10	5.8	37	7.4	28	6.0

<sup>1</sup>Race of mother

<sup>2</sup>Rates per 1,000 live births. Rates calculated with 20 or fewer deaths are unreliable and should be used cautiously.

**Table 4-B.**  
**Black and Other<sup>1</sup> Infant Mortality and Infant Mortality Rates<sup>2</sup>**  
**South Carolina and Each County, 2001, 1999-2001, 1996-1998**  
**(Residence Data)**

County of Residence	2001		1999-2001		1996-1998	
	Number	Rate	Number	Rate	Number	Rate
<b>South Carolina</b>	290	14.5	914	15.0	839	14.5
Abbeville	3	23.8	9	24.9	3	8.6
Aiken	10	16.5	25	13.9	19	11.0
Allendale	2	12.7	6	13.5	2	4.8
Anderson	4	8.4	22	15.1	22	15.4
Bamberg	3	20.8	9	20.0	5	12.0
Barnwell	5	26.0	14	24.8	3	5.7
Beaufort	7	12.7	20	12.3	12	7.8
Berkeley	6	9.4	24	12.4	25	14.1
Calhoun	1	13.0	4	14.3	3	9.8
Charleston	33	17.0	96	16.4	94	17.3
Cherokee	8	43.7	10	17.9	13	23.7
Chester	1	4.8	9	13.1	10	15.2
Chesterfield	2	8.8	12	16.0	14	20.3
Clarendon	4	14.2	15	18.7	11	15.5
Colleton	7	23.5	12	14.3	10	13.4
Darlington	11	22.3	26	17.3	26	17.7
Dillon	6	24.0	13	16.4	9	10.6
Dorchester	8	22.9	19	17.9	22	23.3
Edgefield	2	16.8	13	32.0	8	21.6
Fairfield	-	0.0	6	9.1	8	12.5
Florence	16	18.1	52	19.2	41	16.4
Georgetown	7	18.7	22	19.7	13	11.7
Greenville	15	11.8	33	8.8	45	12.9
Greenwood	4	11.6	19	18.1	19	18.1
Hampton	-	0.0	6	10.8	4	7.2
Horry	16	25.7	40	21.3	32	19.8
Jasper	1	5.4	1	2.1	5	10.1
Kershaw	1	4.8	4	6.4	10	15.9
Lancaster	4	16.5	14	17.8	10	14.1
Laurens	4	17.5	13	17.9	10	12.5
Lee	3	13.6	11	17.6	8	14.6
Lexington	5	8.4	17	9.7	22	13.3
McCormick	1	20.4	4	24.1	3	16.4
Marion	6	19.4	19	19.8	20	21.1
Marlboro	5	20.7	12	16.1	9	11.9
Newberry	6	29.4	11	18.5	4	6.8
Oconee	-	0.0	2	7.3	3	10.1
Orangeburg	14	15.7	48	17.7	34	14.1
Pickens	-	0.0	1	3.1	2	5.7
Richland	23	10.0	91	12.4	96	13.7
Saluda	3	31.9	7	25.9	4	15.6
Spartanburg	3	3.5	24	9.4	21	8.0
Sumter	9	10.8	34	13.0	56	21.7
Union	-	0.0	5	11.5	8	18.3
Williamsburg	11	26.8	27	22.2	20	18.4
York	10	16.6	32	18.1	21	14.0

<sup>1</sup>Race of mother

<sup>2</sup>Rates per 1,000 live births. Rates calculated with 20 or fewer deaths are unreliable and should be used cautiously.



**Table 5.**

Infant, Neonatal and Postneonatal Mortality Rates<sup>1</sup> by Race<sup>2</sup>  
and Percent Changes from 2000 to 2001

South Carolina  
(Residence Data)

<b>Infant Mortality</b>			
Year	Total	White	Black & Other
2000	8.7	5.4	14.2
2001	8.9	5.8	14.5
<b>Percent Change</b>	2.3%	7.4%	2.1%

<b>Neonatal Mortality</b>			
Year	Total	White	Black & Other
2000	6.0	3.8	9.8
2001	6.0	3.8	10.1
<b>Percent Change</b>	0.0%	0.0%	3.1%

<b>Postneonatal Mortality</b>			
Year	Total	White	Black & Other
2000	2.6	1.6	4.4
2001	2.9	2.0	4.4
<b>Percent Change</b>	11.5%	25.0%	0.0%

<sup>1</sup>Rates per 1,000 live births

<sup>2</sup>Race of mother

**Table 6.**  
**Neonatal Mortality and Neonatal Mortality Rates<sup>1</sup>**  
**South Carolina and Each County, 2001, 1999-2001, 1996-1998**  
**(Residence Data)**

County of Residence	2001		1999-2001		1996-1998	
	Number	Rate	Number	Rate	Number	Rate
<b>South Carolina</b>	337	6.0	1,071	6.4	996	6.3
Abbeville	3	8.1	10	9.6	4	3.9
Aiken	16	8.5	33	5.9	17	3.1
Allendale	-	0.0	4	7.6	1	2.0
Anderson	9	4.0	41	6.2	43	6.8
Bamberg	2	9.5	5	7.5	3	4.7
Barnwell	4	11.8	10	9.9	3	3.1
Beaufort	6	3.1	18	3.2	23	4.8
Berkeley	13	5.9	40	6.2	33	5.6
Calhoun	2	12.4	5	9.6	3	5.8
Charleston	38	8.3	102	7.5	105	8.3
Cherokee	5	7.2	12	5.5	16	7.6
Chester	1	2.3	6	4.3	10	7.2
Chesterfield	3	5.2	16	9.0	10	5.9
Clarendon	3	6.7	13	10.0	12	10.2
Colleton	6	9.9	10	5.7	11	6.9
Darlington	12	12.7	31	10.9	21	7.7
Dillon	2	4.2	8	5.5	9	6.3
Dorchester	9	7.3	24	6.7	26	7.6
Edgefield	2	7.2	13	14.7	9	11.3
Fairfield	-	0.0	6	6.2	7	7.2
Florence	18	9.4	51	9.0	36	6.7
Georgetown	7	8.7	20	8.4	15	7.0
Greenville	23	4.2	68	4.2	61	4.1
Greenwood	4	4.4	27	9.6	30	10.9
Hampton	-	0.0	4	4.4	3	3.4
Horry	15	5.8	44	5.9	40	6.2
Jasper	6	17.7	7	7.9	3	3.4
Kershaw	7	10.1	12	5.6	14	7.2
Lancaster	4	5.0	19	7.8	15	6.4
Laurens	4	5.0	16	6.4	15	6.0
Lee	3	10.6	11	13.6	11	15.4
Lexington	11	3.7	46	5.2	44	5.0
McCormick	-	0.0	3	11.8	1	3.7
Marion	5	10.1	16	10.5	17	11.8
Marlboro	5	12.5	11	8.7	8	6.3
Newberry	6	11.5	11	7.4	8	5.8
Oconee	3	3.8	12	5.1	13	5.6
Orangeburg	11	8.7	41	10.4	33	9.0
Pickens	4	2.9	8	2.0	24	6.1
Richland	16	3.8	74	5.7	80	6.4
Saluda	2	7.5	3	3.9	10	13.7
Spartanburg	13	3.8	41	4.1	39	4.0
Sumter	12	7.5	32	6.4	56	11.2
Union	1	2.7	8	7.0	11	9.6
Williamsburg	7	13.0	23	14.1	11	7.5
York	14	6.0	55	8.1	32	5.2

<sup>1</sup>Rates per 1,000 live births. Rates calculated with 20 or fewer deaths are unreliable and should be used cautiously.

**Table 6-A.**  
**White<sup>1</sup> Neonatal Mortality and Neonatal Mortality Rates<sup>2</sup>**  
**South Carolina and Each County, 2001, 1999-2001, 1996-1998**  
**(Residence Data)**

County of Residence	2001		1999-2001		1996-1998	
	Number	Rate	Number	Rate	Number	Rate
<b>South Carolina</b>	135	3.8	424	4.0	392	3.9
Abbeville	1	4.1	3	4.4	1	1.5
Aiken	10	7.8	20	5.3	8	2.1
Allendale	-	0.0	2	25.0	-	0.0
Anderson	7	4.0	26	5.0	29	5.9
Bamberg	-	0.0	-	0.0	-	0.0
Barnwell	-	0.0	1	2.2	2	4.4
Beaufort	1	0.7	7	1.8	11	3.3
Berkeley	8	5.2	21	4.6	13	3.1
Calhoun	1	11.9	1	4.2	-	0.0
Charleston	10	3.8	28	3.6	28	3.9
Cherokee	2	3.9	7	4.3	9	5.8
Chester	-	0.0	1	1.4	4	5.4
Chesterfield	2	5.8	5	4.9	1	1.0
Clarendon	-	0.0	2	4.0	1	2.1
Colleton	1	3.2	1	1.1	3	3.6
Darlington	4	8.9	12	8.9	3	2.4
Dillon	-	0.0	-	0.0	2	3.5
Dorchester	3	3.4	11	4.4	11	4.4
Edgefield	-	0.0	-	0.0	2	4.7
Fairfield	-	0.0	1	3.2	2	6.1
Florence	6	5.9	14	4.8	8	2.8
Georgetown	-	0.0	3	2.3	4	3.8
Greenville	13	3.1	43	3.4	29	2.5
Greenwood	2	3.5	10	5.7	13	7.7
Hampton	-	0.0	-	0.0	1	3.1
Horry	2	1.0	15	2.7	21	4.4
Jasper	5	32.9	6	14.3	1	2.6
Kershaw	6	12.4	8	5.3	7	5.3
Lancaster	2	3.6	13	7.9	7	4.3
Laurens	3	5.2	7	4.0	8	4.7
Lee	-	0.0	1	5.4	6	36.4
Lexington	8	3.4	35	4.9	27	3.8
McCormick	-	0.0	-	0.0	-	0.0
Marion	1	5.3	1	1.8	3	6.1
Marlboro	-	0.0	1	1.9	2	3.8
Newberry	1	3.1	5	5.5	4	5.0
Oconee	3	4.3	11	5.3	11	5.4
Orangeburg	1	2.7	3	2.4	8	6.4
Pickens	4	3.2	8	2.2	23	6.5
Richland	5	2.6	21	3.7	11	2.0
Saluda	-	0.0	-	0.0	7	14.8
Spartanburg	11	4.3	29	3.9	27	3.7
Sumter	4	5.2	8	3.3	13	5.4
Union	1	4.2	3	4.3	4	5.7
Williamsburg	-	0.0	2	4.8	-	0.0
York	7	4.0	28	5.6	17	3.6

<sup>1</sup>Race of mother

<sup>2</sup>Rates per 1,000 live births. Rates calculated with 20 or fewer deaths are unreliable and should be used cautiously.

**Table 6-B.**

Black and Other<sup>1</sup> Neonatal Mortality and Neonatal Mortality Rates<sup>2</sup>  
 South Carolina and Each County, 2001, 1999-2001, 1996-1998  
 (Residence Data)

County of Residence	2001		1999-2001		1996-1998	
	Number	Rate	Number	Rate	Number	Rate
<b>South Carolina</b>	202	10.1	647	10.6	604	10.5
Abbeville	2	15.9	7	19.4	3	8.6
Aiken	6	9.9	13	7.2	9	5.2
Allendale	-	0.0	2	4.5	1	2.4
Anderson	2	4.2	15	10.3	14	9.8
Bamberg	2	13.9	5	11.1	3	7.2
Barnwell	4	20.8	9	16.0	1	1.9
Beaufort	5	9.1	11	6.8	12	7.8
Berkeley	5	7.9	19	9.8	20	11.3
Calhoun	1	13.0	4	14.3	3	9.8
Charleston	28	14.4	74	12.6	77	14.1
Cherokee	3	16.4	5	8.9	7	12.8
Chester	1	4.8	5	7.3	6	9.1
Chesterfield	1	4.4	11	14.7	9	13.0
Clarendon	3	10.7	11	13.7	11	15.5
Colleton	5	16.8	9	10.7	8	10.8
Darlington	8	16.2	19	12.7	18	12.3
Dillon	2	8.0	8	10.1	7	8.3
Dorchester	6	17.2	13	12.3	15	15.9
Edgefield	2	16.8	13	32.0	7	18.9
Fairfield	-	0.0	5	7.6	5	7.8
Florence	12	13.6	37	13.6	28	11.2
Georgetown	7	18.7	17	15.2	11	9.9
Greenville	10	7.9	25	6.7	32	9.1
Greenwood	2	5.8	17	16.2	17	16.2
Hampton	-	0.0	4	7.2	2	3.6
Horry	13	20.9	29	15.5	19	11.7
Jasper	1	5.4	1	2.1	2	4.0
Kershaw	1	4.8	4	6.4	7	11.2
Lancaster	2	8.2	6	7.6	8	11.3
Laurens	1	4.4	9	12.4	7	8.8
Lee	3	13.6	10	16.0	5	9.1
Lexington	3	5.0	11	6.3	17	10.3
McCormick	-	0.0	3	18.1	1	5.5
Marion	4	12.9	15	15.6	14	14.8
Marlboro	5	20.7	10	13.4	6	7.9
Newberry	5	24.5	6	10.1	4	6.8
Oconee	-	0.0	1	3.7	2	6.7
Orangeburg	10	11.2	38	14.0	25	10.4
Pickens	-	0.0	-	0.0	1	2.8
Richland	11	4.8	53.0	7.2	69	9.8
Saluda	2	21.3	3	11.1	3	11.7
Spartanburg	2	2.3	12	4.7	12	4.6
Sumter	8	9.6	24	9.2	43	16.7
Union	-	0.0	5	11.5	7	16.0
Williamsburg	7	17.1	21	17.2	11	10.1
York	7	11.6	27	15.3	15	10.0

<sup>1</sup>Race of mother<sup>2</sup>Rates per 1,000 live births. Rates calculated with 20 or fewer deaths are unreliable and should be used cautiously.

**Table 7.**  
**Postneonatal Mortality and Postneonatal Mortality Rates<sup>1</sup>**  
**South Carolina and Each County, 2001, 1999-2001, 1996-1998**  
**(Residence Data)**

County of Residence	2001		1999-2001		1996-1998	
	Number	Rate	Number	Rate	Number	Rate
<b>South Carolina</b>	159	2.9	477	2.9	433	2.8
Abbeville	1	2.7	3	2.9	-	0.0
Aiken	7	3.7	21	3.8	20	3.6
Allendale	2	11.0	4	7.6	1	2.0
Anderson	5	2.2	18	2.7	19	3.0
Bamberg	1	4.7	4	6.0	2	3.1
Barnwell	1	2.9	9	8.9	3	3.1
Beaufort	4	2.1	14	2.5	6	1.2
Berkeley	7	3.2	15	2.3	10	1.7
Calhoun	-	0.0	-	0.0	1	1.9
Charleston	8	1.7	34	2.5	34	2.7
Cherokee	12	17.3	15	6.8	10	4.8
Chester	1	2.3	5	3.6	6	4.3
Chesterfield	2	3.5	2	1.1	7	4.1
Clarendon	1	2.2	4	3.1	2	1.7
Colleton	2	3.3	3	1.7	5	3.2
Darlington	3	3.2	9	3.2	9	3.3
Dillon	4	8.4	6	4.1	4	2.8
Dorchester	5	4.1	14	3.9	9	2.6
Edgefield	-	0.0	2	2.3	2	2.5
Fairfield	-	0.0	1	1.0	3	3.1
Florence	7	3.7	22	3.9	18	3.4
Georgetown	2	2.5	7	2.9	9	4.2
Greenville	9	1.6	29	1.8	36	2.4
Greenwood	2	2.2	3	1.1	9	3.3
Hampton	-	0.0	4	4.4	3	3.4
Horry	7	2.7	20	2.7	22	3.4
Jasper	-	0.0	2	2.2	3	3.4
Kershaw	1	1.4	3	1.4	4	2.0
Lancaster	2	2.5	8	3.3	3	1.3
Laurens	5	6.2	9	3.6	8	3.2
Lee	-	0.0	1	1.2	3	4.2
Lexington	8	2.7	24	2.7	16	1.8
McCormick	1	12.5	1	3.9	2	7.4
Marion	4	8.0	6	3.9	7	4.9
Marlboro	-	0.0	5	3.9	3	2.3
Newberry	2	3.8	7	4.7	2	1.4
Oconee	1	1.3	4	1.7	4	1.7
Orangeburg	4	3.2	11	2.8	12	3.3
Pickens	3	2.2	13	3.2	11	2.8
Richland	13	3.1	45	3.4	31	2.5
Saluda	1	3.7	4	5.1	1	1.4
Spartanburg	8	2.3	29	2.9	27	2.7
Sumter	2	1.2	16	3.2	15	3.0
Union	1	2.7	1	0.9	5	4.4
Williamsburg	4	7.4	6	3.7	9	6.1
York	6	2.6	14	2.1	17	2.8

<sup>1</sup>Rates per 1,000 live births. Rates calculated with 20 or fewer deaths are unreliable and should be used cautiously.

**Table 7-A.**

White<sup>1</sup> Postneonatal Mortality and Postneonatal Mortality Rates<sup>2</sup>  
 South Carolina and Each County, 2001, 1999-2001, 1996-1998  
 (Residence Data)

County of Residence	2001		1999-2001		1996-1998	
	Number	Rate	Number	Rate	Number	Rate
<b>South Carolina</b>	71	2.0	210	2.0	198	2.0
Abbeville	-	0.0	1	1.5	-	0.0
Aiken	3	2.3	9	2.4	10	2.6
Allendale	-	0.0	-	0.0	-	0.0
Anderson	3	1.7	11	2.1	11	2.2
Bamberg	-	0.0	-	0.0	-	0.0
Barnwell	-	0.0	4	8.9	1	2.2
Beaufort	2	1.4	5	1.3	6	1.8
Berkeley	6	3.9	10	2.2	5	1.2
Calhoun	-	0.0	-	0.0	1	4.7
Charleston	3	1.1	12	1.5	17	2.4
Cherokee	7	13.8	10	6.1	4	2.6
Chester	1	4.4	1	1.4	2	2.7
Chesterfield	1	2.9	1	1.0	2	2.0
Clarendon	-	0.0	-	0.0	2	4.3
Colleton	-	0.0	-	0.0	3	3.6
Darlington	-	0.0	2	1.5	1	0.8
Dillon	-	0.0	1	1.5	2	3.5
Dorchester	3	3.4	8	3.2	2	0.8
Edgefield	-	0.0	2	4.2	1	2.3
Fairfield	-	0.0	-	0.0	-	0.0
Florence	3	2.9	7	2.4	5	1.8
Georgetown	2	4.6	2	1.6	7	6.7
Greenville	4	0.9	21	1.7	23	2.0
Greenwood	-	0.0	1	0.6	7	4.1
Hampton	-	0.0	2	5.6	1	3.1
Horry	4	2.0	9	1.6	9	1.9
Jasper	-	0.0	2	4.8	-	0.0
Kershaw	1	2.1	3	2.0	1	0.8
Lancaster	-	0.0	-	0.0	1	0.6
Laurens	2	3.5	5	2.8	5	3.0
Lee	-	0.0	-	0.0	-	0.0
Lexington	6	2.6	18	2.5	11	1.5
McCormick	-	0.0	-	0.0	-	0.0
Marion	2	10.7	2	3.6	1	2.0
Marlboro	-	0.0	3	5.8	-	0.0
Newberry	1	3.1	2	2.2	2	2.5
Oconee	1	1.4	3	1.4	3	1.5
Orangeburg	-	0.0	1	0.8	3	2.4
Pickens	3	2.4	12	3.2	10	2.8
Richland	1	0.5	7	1.2	4	0.7
Saluda	-	0.0	-	0.0	-	0.0
Spartanburg	7	2.7	17	2.3	18	2.5
Sumter	1	1.3	6	2.5	2	0.8
Union	1	4.2	1	1.4	4	5.7
Williamsburg	-	0.0	-	0.0	-	0.0
York	3	1.7	9	1.8	11	2.4

<sup>1</sup>Race of mother<sup>2</sup>Rates per 1,000 live births. Rates calculated with 20 or fewer deaths are unreliable and should be used cautiously.

**Table 7-B.**

Black and Other<sup>1</sup> Postneonatal Mortality and Postneonatal Mortality Rates<sup>2</sup>  
 South Carolina and Each County, 2001, 1999-2001, 1996-1998  
 (Residence Data)

County of Residence	2001		1999-2001		1996-1998	
	Number	Rate	Number	Rate	Number	Rate
<b>South Carolina</b>	88	4.4	267	4.4	235	4.1
Abbeville	1	7.9	2	5.5	-	0.0
Aiken	4	6.6	12	6.7	10	5.8
Allendale	2	12.7	4	9.0	1	2.4
Anderson	2	4.2	7	4.8	8	5.6
Bamberg	1	6.9	4	8.9	2	4.8
Barnwell	1	5.2	5	8.9	2	3.8
Beaufort	2	3.6	9	5.5	-	0.0
Berkeley	1	1.6	5	2.6	5	2.8
Calhoun	-	0.0	-	0.0	-	0.0
Charleston	5	2.6	22	3.8	17	3.1
Cherokee	5	27.3	5	8.9	6	10.9
Chester	-	0.0	4	5.8	4	6.1
Chesterfield	1	4.4	1	1.3	5	7.2
Clarendon	1	3.6	4	5.0	-	0.0
Colleton	2	6.7	3	3.6	2	2.7
Darlington	3	6.1	7	4.7	8	5.5
Dillon	4	16.0	5	6.3	2	2.4
Dorchester	2	5.7	6	5.7	7	7.4
Edgefield	-	0.0	-	0.0	1	2.7
Fairfield	-	0.0	1	1.5	3	4.7
Florence	4	4.5	15	5.5	13	5.2
Georgetown	-	0.0	5	4.5	2	1.8
Greenville	5	3.9	8	2.1	13	3.7
Greenwood	2	5.8	2	1.9	2	1.9
Hampton	-	0.0	2	3.6	2	3.6
Horry	3	4.8	11	5.9	13	8.0
Jasper	-	0.0	-	0.0	3	6.0
Kershaw	-	0.0	-	0.0	3	4.8
Lancaster	2	8.2	8	10.2	2	2.8
Laurens	3	13.2	4	5.5	3	3.8
Lee	-	0.0	1	1.6	3	5.5
Lexington	2	3.3	6	3.4	5	3.0
McCormick	1	20.4	1	6.0	2	10.9
Marion	2	6.5	4	4.2	6	6.3
Marlboro	-	0.0	2	2.7	3	4.0
Newberry	1	4.9	5	8.4	-	0.0
Oconee	-	0.0	1	3.7	1	3.4
Orangeburg	4	4.5	10	3.7	9	3.7
Pickens	-	0.0	1	3.1	1	2.8
Richland	12	5.2	38	5.2	27	3.8
Saluda	1	10.6	4	14.8	1	3.9
Spartanburg	1	1.2	12	4.7	9	3.4
Sumter	1	1.2	10	3.8	13	5.0
Union	-	0.0	-	0.0	1	2.3
Williamsburg	4	9.8	6	4.9	9	8.3
York	3	5.0	5	2.8	6	4.0

<sup>1</sup>Race of mother<sup>2</sup>Rates per 1,000 live births. Rates calculated with 20 or fewer deaths are unreliable and should be used cautiously.

**Table 8.**  
**Leading Causes of Infant Death by Age at Death**  
**South Carolina, 2001**  
**(Residence Data)**

Causes of Death (ICD-10 Codes)	Total	Under 1 Day	1-6 Days	7-27 Days	28-364 Days
<b>Total Infant Deaths</b>	496	217	52	68	159
Congenital malformations, deformations, etc. (Q00-Q99)	75	30	7	18	20
Disorders relating to short gestation and low birthweight, NEC (P07)	74	64	5	5	0
Newborn affected by maternal complications of pregnancy (P01)	44	42	2	0	0
Sudden infant death syndrome (R95)	38	0	0	0	38
Respiratory distress of newborn (P22)	29	15	7	3	4
Accidents (V01-X59, Y85-Y86)	28	0	0	5	23
Atelectasis (P28.0-P28.1)	18	13	2	3	0
Diseases of Circulatory System (I00-I99)	16	0	4	1	11
Intrauterine hypoxia and birth asphyxia (P20-P21)	16	9	4	3	0
Bacterial sepsis of newborn (P36)	15	3	2	8	2
All other causes	143	41	19	22	61



**Table 8b.**  
**Leading Causes of Black & Other Infant Death by Age at Death**  
**South Carolina, 2001**  
**(Residence Data)**

Causes of Death (ICD-10 Codes)	Total	Under 1 Day	1-4 Days	7-27 Days	28-364 Days
<b>Total Black and Other Infant Deaths</b>	290	136	31	35	88
Disorders related to short gestation, etc. (P07)	54	46	4	4	0
Congenital malformations, etc. (Q00-Q99)	26	9	3	5	9
Newborn affected by maternal complication of placenta,etc (P01)	25	24	1	0	0
Sudden infant death syndrome (R95)	20	0	0	0	20
Respiratory distress of newborn (P22)	18	10	4	1	3
Atelectasis (P28.0-P28.1)	13	10	1	2	0
Accidents (V01-X59,Y85-Y86)	12	0	0	2	10
Bacterial sepsis of newborn (P36)	11	3	2	4	2
Disease of circulatory system (I00-I99)	10	0	3	0	7
Intrauterine hypoxia and birth asphyxia (P20-P21)	10	6	2	2	0
All other causes	91	28	11	15	37

**Table 8a.**  
**Leading Causes of White Infant Death by Age at Death**  
**South Carolina, 2001**  
**(Residence Data)**

Causes of Death (ICD-10 Codes)	Total	Under 1 Day	1-4 Days	7-27 Days	28-364 Days
<b>Total White Infant Deaths</b>	206	81	21	33	71
Congenital malformations, etc. (Q00-Q99)	49	21	4	13	11
Disorders related to short gestation, etc. (P07)	20	18	1	1	0
Newborn affected by maternal complication of placenta, etc (P01)	19	18	1	0	0
Sudden infant death syndrome (R95)	18	0	0	0	18
Accidents (V01-X59, Y85-Y86)	16	0	0	3	13
Respiratory distress of newborn (P22)	11	5	3	2	1
Disease of circulatory system (I00-I99)	6	0	1	1	4
Intrauterine hypoxia and birth asphyxia (P20-P21)	6	3	2	1	0
Atelectasis (P28.0-P28.1)	5	3	1	1	0
All other causes	56	13	8	11	24

**Table 8c.**  
 Percent Changes of Leading Causes of Infant Death  
 by Age at Death from 2000-2001, South Carolina

Cause of Infant Death Ranked by 2001 Data (ICD-10 Codes)	2000	2001	% Change
<b>Total Infant Death</b>	<b>488</b>	<b>496</b>	<b>1.6%</b>
Congenital malformations, deformations, etc. (Q00-Q99)	89	75	-15.7%
Disorders relating to short gestation and low birthweight, NEC (P07)	95	74	-22.1%
Newborn affected by maternal complications of pregnancy, etc (P01)	25	44	76.0%
Sudden infant death syndrome (R95)	37	38	2.7%
Respiratory distress of newborn (P22)	20	29	45.0%
Accidents (V01-X59, Y85-Y86)	22	28	27.3%
Atelectasis (P28.0-P28.1)	8	18	125.0%
Diseases of Circulatory System (I00-I99)	9	16	77.8%
Intrauterine hypoxia and birth asphyxia (P20-P21)	15	16	6.7%
Bacterial sepsis of newborn (P36)	20	15	-25.0%
All other causes	137	143	4.4%

**Table 9. (continued)**Comparison of Characteristics from Birth Files, by Race<sup>1</sup>Z-tests for differences in proportions<sup>3</sup>

South Carolina, 1999 to 2000

(Residence Data)

	2000		2001		Z-TEST	P-VALUE
	Percent	Number	Percent	Number		
<b>KESSNER INDEX: ADEQUATE</b>						
TOTAL <sup>2</sup>	69.70	39,005	70.76	39,448	3.8912	0.0001
White	75.40	26,501	76.68	27,398	3.9792	0.0001
Black & Other	60.07	12,496	60.20	12,046	0.2839	0.7765
<b>KESSNER INDEX: LESS THAN ADEQUATE</b>						
TOTAL <sup>2</sup>	26.94	15,074	26.48	14,764	-1.7062	0.0880
White	21.43	7,532	20.83	7,444	-1.9471	0.0515
Black & Other	36.24	7,538	36.58	7,319	0.7246	0.4687
<b>KOTELCHUCK INDEX: ADEQUATE PLUS</b>						
TOTAL <sup>2</sup>	35.00	19,587	37.72	21,030	9.4637	0.0000
White	35.64	12,526	38.04	13,595	6.6451	0.0000
Black & Other	33.94	7,061	37.15	7,432	6.7592	0.0000
<b>KOTELCHUCK INDEX: ADEQUATE</b>						
TOTAL <sup>2</sup>	36.75	20,564	36.50	20,346	-0.8626	0.3884
White	39.75	13,969	39.69	14,183	-0.1409	0.8879
Black & Other	31.69	6,593	30.79	6,161	-1.9606	0.0499
<b>KOTELCHUCK INDEX: INTERMEDIATE</b>						
TOTAL <sup>2</sup>	12.81	7,171	11.22	6,254	-8.1987	0.0000
White	12.89	4,532	11.47	4,098	-5.8035	0.0000
Black & Other	12.64	2,629	10.78	2,156	-5.8447	0.0000
<b>KOTELCHUCK INDEX: INADEQUATE</b>						
TOTAL <sup>2</sup>	13.93	7,793	13.19	7,351	-3.6072	0.0003
White	10.53	3,702	9.68	3,460	-3.7528	0.0002
Black & Other	19.67	4,091	19.45	3,891	-0.5556	0.5785
<b>HISPANIC MOTHER</b>						
TOTAL <sup>2</sup>	4.04	2,261	5.39	3,005	10.6469	0.0000
White	5.81	2,041	7.80	2,786	10.5143	0.0000
Black & Other	1.06	220	1.09	219	0.3624	0.7170

<sup>1</sup>Race of mother<sup>2</sup>Includes unknown races<sup>3</sup>Proportions are expressed as percentages

**Table 9 a. (continued)**Comparison of Characteristics of Infants who died in the year of birth, by Race<sup>1</sup>Z-tests for differences in proportions<sup>3</sup>

South Carolina, 2000 to 2001

(Residence Data)

	2000		2001		Z-TEST	P-VALUE
	Percent	Number	Percent	Number		

KESSNER INDEX: ADEQUATE						
TOTAL <sup>2</sup>	0.41	228	0.42	235	0.3677	0.7131
White	0.28	98	0.32	113	0.9141	0.3606
Black & Other	0.62	130	0.61	122	-0.1954	0.8451

KESSNER INDEX: LESS THAN ADEQUATE						
TOTAL <sup>2</sup>	0.30	166	0.29	164	-0.0751	0.9401
White	0.16	55	0.15	52	-0.3757	0.7071
Black & Other	0.53	111	0.56	112	0.3589	0.7197

KOTELCHUCK INDEX: ADEQUATE PLUS						
TOTAL <sup>2</sup>	0.36	200	0.39	220	1.0174	0.3089
White	0.25	87	0.27	98	0.6974	0.4855
Black & Other	0.54	113	0.61	122	0.8884	0.3743

KOTELCHUCK INDEX: ADEQUATE						
TOTAL <sup>2</sup>	0.12	67	0.14	79	1.0172	0.3091
White	0.09	32	0.11	38	0.6484	0.5167
Black & Other	0.17	35	0.20	41	0.8590	0.3903

KOTELCHUCK INDEX: INTERMEDIATE						
TOTAL <sup>2</sup>	0.07	39	0.05	26	-1.5973	0.1102
White	0.03	12	0.04	15	0.5346	0.5929
Black & Other	0.13	27	0.05	11	-2.4771	0.0132

KOTELCHUCK INDEX: INADEQUATE						
TOTAL <sup>2</sup>	0.11	84	0.13	70	0.5410	0.5885
White	0.08	27	0.04	15	-1.9058	0.0567
Black & Other	0.27	57	0.27	55	0.0172	0.9863

HISPANIC MOTHER						
TOTAL <sup>2</sup>	0.01	7	0.02	9	0.5078	0.6116
White	0.02	6	0.02	7	0.2476	0.8044
Black & Other	0.00	1	0.01	2	0.6112	0.5410

<sup>1</sup>Race of mother<sup>2</sup>Includes unknown races<sup>3</sup>Proportions are expressed as percentages

**Table 10.**  
 Infant Mortality Rates<sup>1</sup> by Race<sup>2</sup> and Birthweight<sup>3</sup> Group  
 South Carolina  
 1999, 2000 and 2001  
 (Residence Data)

<b>Infant Mortality for Very Low Birthweight (0-1499 grams)</b>									
	Total			White			Black & Other		
Year	Number of Live Birth	Number of Infant Death	Rate	Number of Live Birth	Number of Infant Death	Rate	Number of Live Birth	Number of Infant Death	Rate
1999	1,121	319	284.6	440	108	245.5	681	211	309.8
2000	1,107	289	261.0	445	98	220.2	662	191	288.5
2001	1,056	293	277.5	438	100	228.3	618	193	312.3

<b>Infant Mortality for Intermediate Low Birthweight (1500-2499 grams)</b>									
	Total			White			Black & Other		
Year	Number of Live Birth	Number of Infant Death	Rate	Number of Live Birth	Number of Infant Death	Rate	Number of Live Birth	Number of Infant Death	Rate
1999	4,272	71	16.6	2,066	35	16.9	2,206	36	16.3
2000	4,305	64	14.9	2,094	21	9.6	2,210	44	19.9
2001	4,293	50	11.6	2,168	24	11.1	2,125	26	12.2

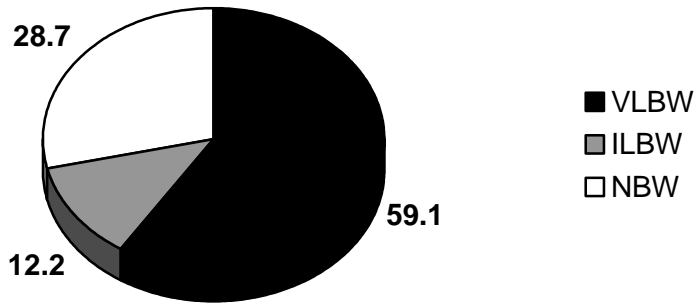
<b>Infant Mortality for Normal Birthweight (2500+ grams)</b>									
	Total			White			Black & Other		
Year	Number of Live Birth	Number of Infant Death	Rate	Number of Live Birth	Number of Infant Death	Rate	Number of Live Birth	Number of Infant Death	Rate
1999	49,297	166	3.4	32,173	90	2.8	17,117	76	4.4
2000	50,549	122	2.4	32,606	67	2.1	17,931	55	3.1
2001	50,392	149	3.0	33,122	78	2.4	17,265	71	4.1

<sup>1</sup>Rates per 1,000 live births

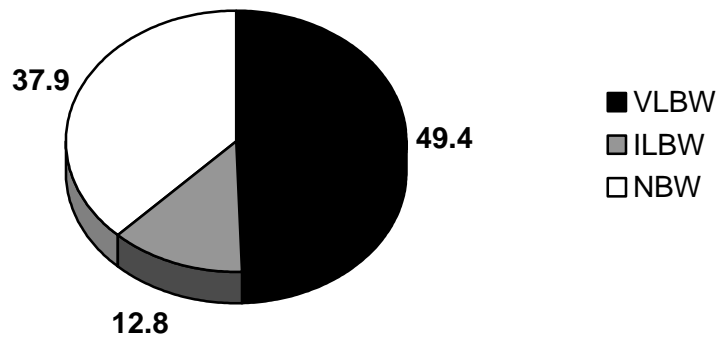
<sup>2</sup>Race of mother

<sup>3</sup>Does not include missing birthweights

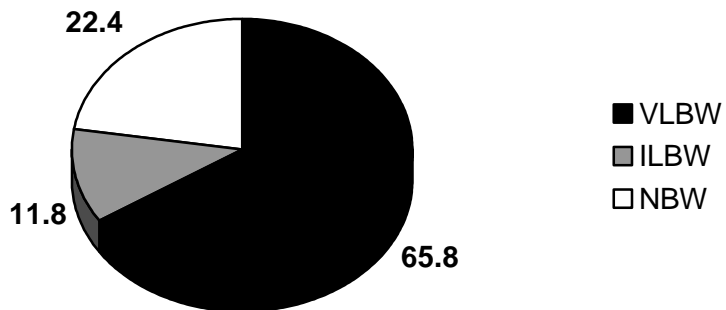
**Figure 1.**  
 Percentage of Infant Deaths by Birthweight<sup>1</sup> Group  
 South Carolina, 1999-2001 Residence Data



**Figure 1-A.**  
 Percentage of Infant Deaths to White Mothers by Birthweight<sup>1</sup> Group  
 South Carolina, 1999-2001 Residence Data

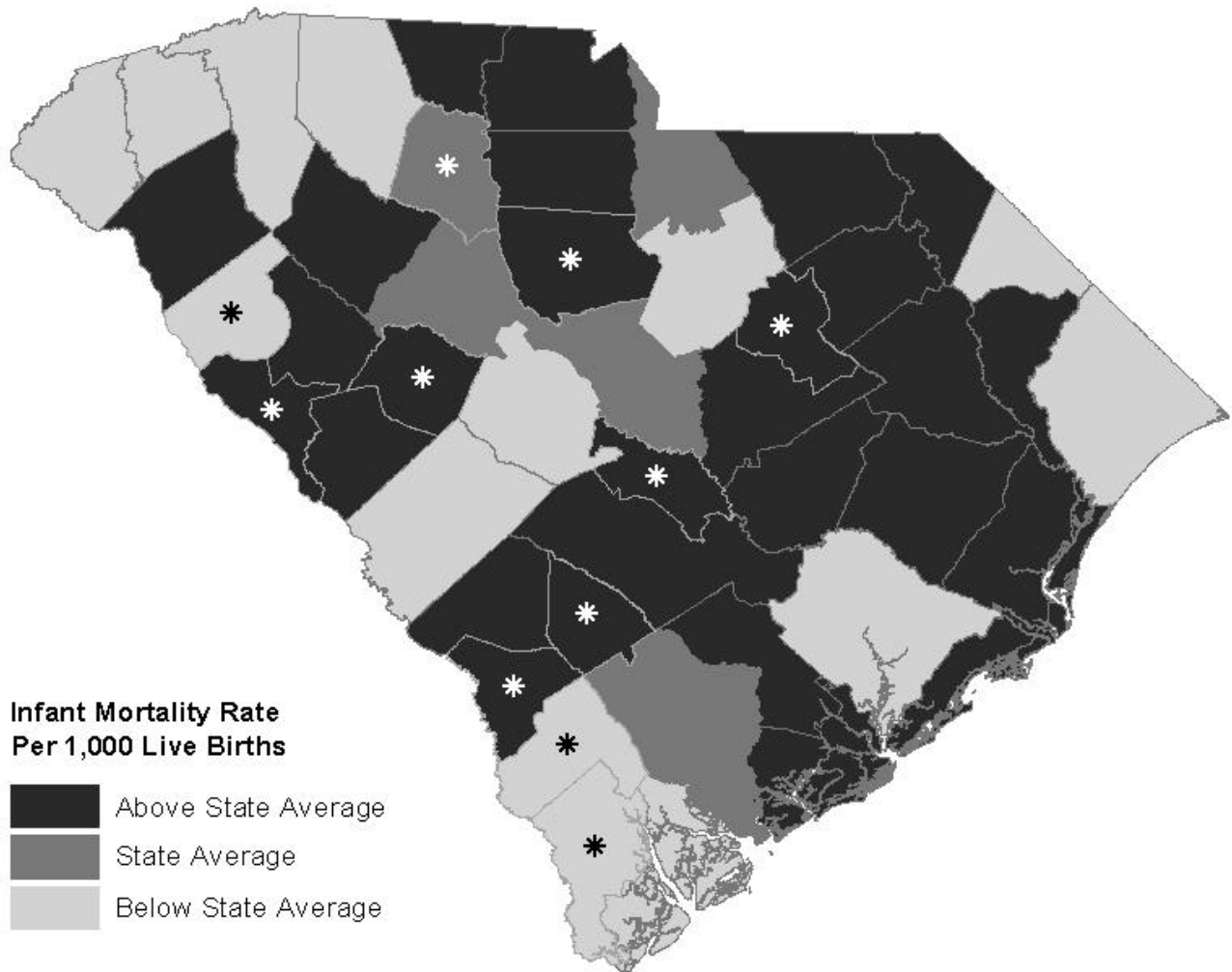


**Figure 1-B.**  
 Percentage of Infant Deaths to Black and Other Mothers by Birthweight<sup>1</sup> Group  
 South Carolina, 1999-2001 Residence Data



<sup>1</sup>Does not include missing birthweights

**Figure 2.**  
Five-year Infant Mortality Rates by County  
South Carolina  
1997-2001  
(Residence Data)



NOTE: \*'s indicates a rate calculated with 20 or fewer deaths. This rate is unreliable and should be used cautiously.

**Above State Average** indicates a rate greater than 9.7.  
**State Average** indicates a rate between 9.0 and 9.7, inclusive.  
**Below State Average** indicates a rate lower than 9.0.