



# **Infant Mortality and Selected Birth Characteristics**



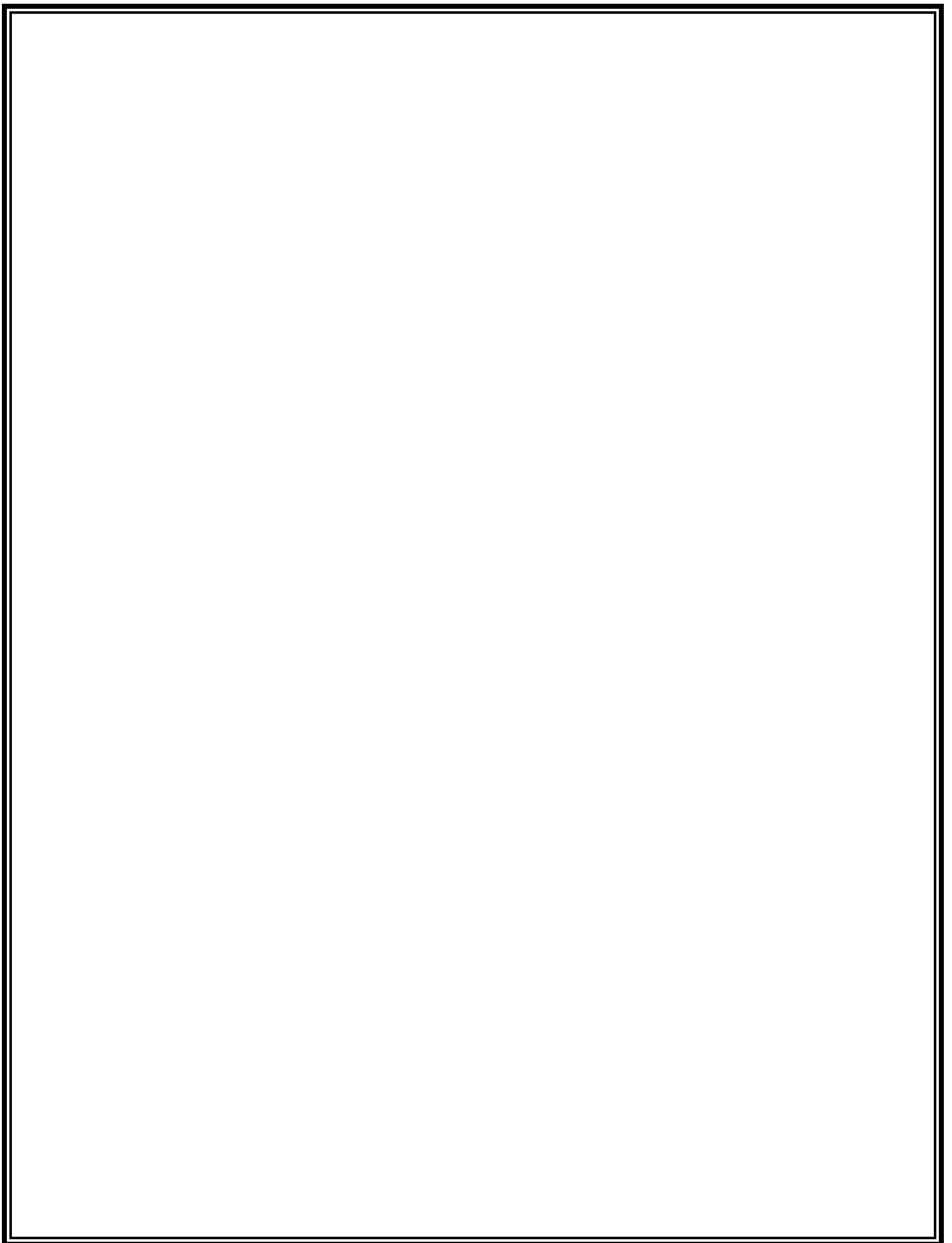
## **2005 South Carolina Residence Data**

**November 2007**

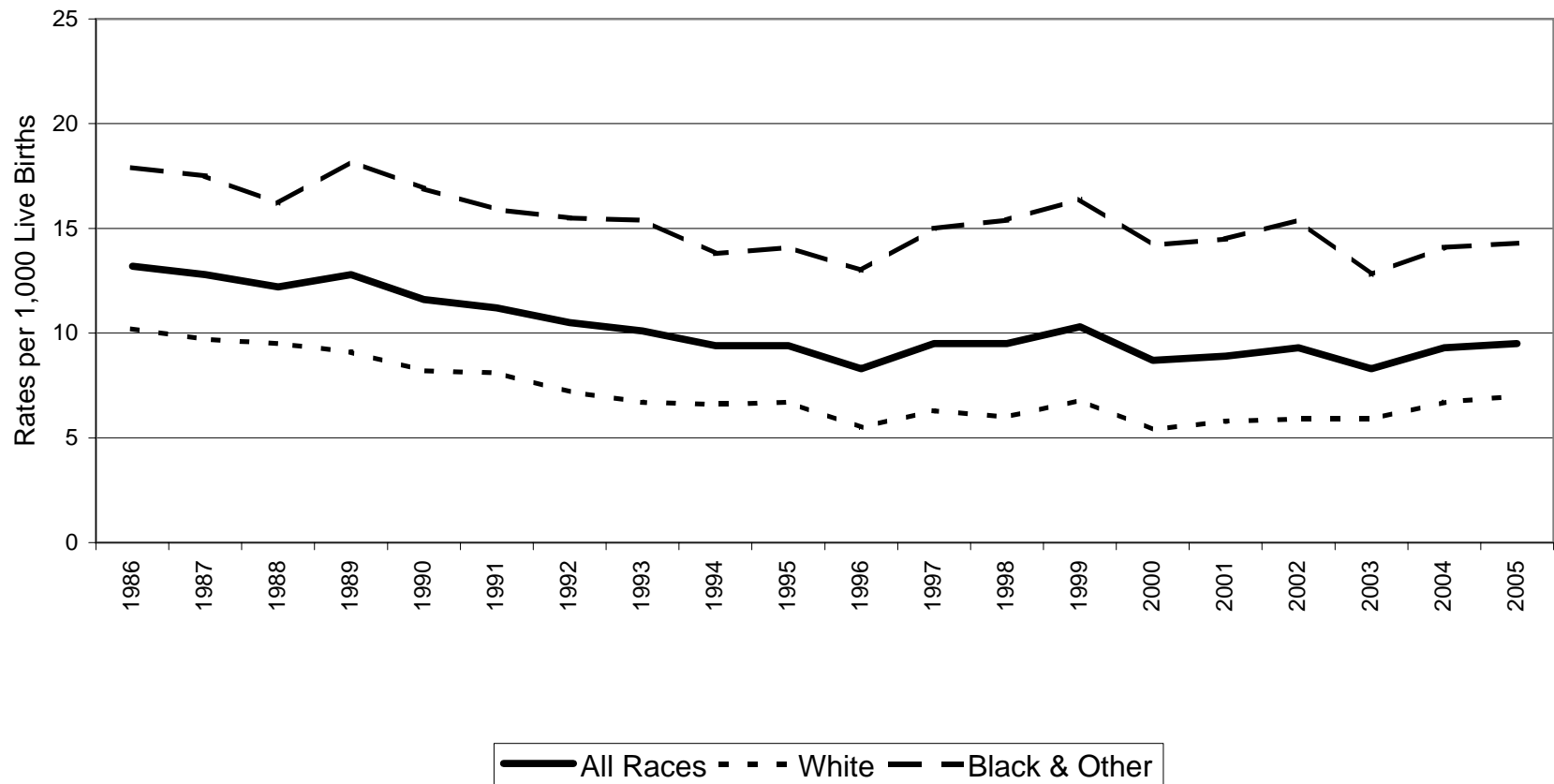
**South Carolina Department of Health and Environmental Control  
Office of Public Health Statistics and Information Services  
Division of Biostatistics and Division of Health Informatics  
2600 Bull Street  
Columbia, SC 29201**

**Phone: (803)898-3649  
Fax: (803)898-3661**





## South Carolina Infant Mortality Rates<sup>1</sup> by Race<sup>2</sup> Residence Data, 1986-2005



	1986	1987	1988	1989	1990	1991	1992	1993	1994	1995	1996	1997	1998	1999	2000	2001	2002	2003	2004	2005
All Races	13.2	12.8	12.2	12.8	11.6	11.2	10.5	10.1	9.4	9.4	8.3	9.5	9.5	10.3	8.7	8.9	9.3	8.3	9.3	9.5
White	10.2	9.7	9.5	9.1	8.2	8.1	7.2	6.7	6.6	6.7	5.5	6.3	6.0	6.8	5.4	5.8	5.9	5.9	6.7	7.0
Black & Other	17.9	17.5	16.2	18.2	16.9	15.9	15.5	15.4	13.8	14.1	13.0	15.0	15.4	16.4	14.2	14.5	15.4	12.8	14.1	14.3

<sup>1</sup>Rates per 1,000 live births

<sup>2</sup>Race of infant (1986-1989); Race of mother (1990-2005)

**Table 1.**  
 Infant Mortality Rates<sup>1</sup> with 95% Confidence Intervals<sup>2</sup>  
 South Carolina, 1986-2005  
 (Residence Data)

Year	Number of Live Births	Number of Infant Deaths	Infant Mortality Rate	95% Confidence Intervals
1986	51,726	685	13.2	(12.2, 14.2)
1987	52,774	673	12.8	(11.8, 13.8)
1988	55,090	673	12.2	(11.3, 13.1)
1989	57,239	731	12.8	(11.9, 13.7)
1990	58,461	679	11.6	(10.7, 12.5)
1991	57,517	644	11.2	(10.3, 12.1)
1992	56,102	588	10.5	(9.7, 11.3)
1993	53,715	544	10.1	(9.3, 11.0)
1994	51,907	486	9.4	(8.5, 10.2)
1995	50,913	480	9.4	(8.6, 10.2)
1996	51,105	424	8.3	(7.5, 9.1)
1997	52,205	494	9.5	(8.7, 10.3)
1998	53,833	511	9.5	(8.7, 10.3)
1999	54,706	564	10.3	(9.4, 11.2)
2000	55,964	488	8.7	(7.9, 9.5)
2001	55,748	496	8.9	(8.1, 9.7)
2002	54,453	507	9.3	(8.5, 10.1)
2003	55,461	463	8.3	(7.5, 9.1)
2004	56,543	524	9.3	(8.5, 10.1)
2005	57,538	549	9.5	(8.7, 10.3)

**Table 2.**  
 Infant Mortality Rates<sup>1</sup> with 95% Confidence Intervals<sup>2</sup>  
 South Carolina  
 1986-1990, 1991-1995, 1996-2000, 2001-2005  
 (Residence Data)

Years	Number of Live Births	Number of Infant Deaths	Infant Mortality Rate	95% Confidence Intervals
1986-1990	275,290	3,441	12.5	(12.1, 12.9)
1991-1995	270,154	2,742	10.1	(9.8, 10.5)
1996-2000	267,813	2,481	9.3	(8.9, 9.6)
2001-2005	279,743	2,539	9.1	(8.7, 9.4)

<sup>1</sup>Rates per 1,000 live births

<sup>2</sup>  $r \pm 61.981 (r/n)^{1/2}$ , where r = infant mortality rate and n = number of live births

**Table 3.**  
 Infant, Neonatal and Postneonatal Mortality and Mortality Rates<sup>1</sup> by Race<sup>2</sup>  
 South Carolina  
 2001, 2002, 2003, 2004 and 2005  
 (Residence Data)

<b>Infant Mortality</b>									
	Total			White			Black & Other		
Year	Number of Live Birth	Number of Infant Death	Rate	Number of Live Birth	Number of Infant Death	Rate	Number of Live Birth	Number of Infant Death	Rate
2001	55,748*	496	8.9	35,731	206	5.8	20,008	290	14.5
2002	54,453*	507*	9.3	35,152	208	5.9	19,294	298	15.4
2003	55,461*	463	8.3	36,001	214	5.9	19,451	249	12.8
2004	56,543*	524	9.3	36,872	247	6.7	19,616	277	14.1
2005	57,538*	549	9.5	37,367	262	7.0	20,080	287	14.3

<b>Neonatal Mortality (&lt;28 days)</b>									
	Total			White			Black & Other		
Year	Number of Live Birth	Number of Infant Death	Rate	Number of Live Birth	Number of Infant Death	Rate	Number of Live Birth	Number of Infant Death	Rate
2001	55,748*	337	6.0	35,731	135	3.8	20,008	202	10.1
2002	54,453*	346*	6.4	35,152	134	3.8	19,294	211	10.9
2003	55,461*	328	5.9	36,001	140	3.9	19,451	188	9.7
2004	56,543*	363	6.4	36,872	169	4.6	19,616	194	9.9
2005	57,538*	341	5.9	37,367	157	4.2	20,080	184	9.2

<b>Postneonatal Mortality (28-364 days)</b>									
	Total			White			Black & Other		
Year	Number of Live Birth	Number of Infant Death	Rate	Number of Live Birth	Number of Infant Death	Rate	Number of Live Birth	Number of Infant Death	Rate
2001	55,748*	159	2.9	35,731	71	2.0	20,008	88	4.4
2002	54,453*	161	3.0	35,152	74	2.1	19,294	87	4.5
2003	55,461*	135	2.4	36,001	74	2.0	19,451	61	3.1
2004	56,543*	161	2.9	36,872	78	2.1	19,616	83	4.2
2005	57,538*	208	3.6	37,367	105	2.8	20,080	103	5.1

<sup>1</sup>Rates per 1,000 live births

<sup>2</sup>Race of mother

\* Includes unknown race

**Table 4.**  
**Infant Mortality and Infant Mortality Rates<sup>1</sup>**  
**South Carolina and Each County, 2005, 2003-2005, 2000-2002**  
**(Residence Data)**

County of Residence	2005		2003-2005		2000-2002	
	Number	Rate	Number	Rate	Number	Rate
<b>South Carolina</b>	549	9.5	1,536	9.1	1,491	9.0
Abbeville	4	14.9	16	17.7	16	15.5
Aiken	30	16.3	69	12.5	56	10.1
Allendale	2	13.6	8	17.4	6	11.2
Anderson	19	8.5	62	9.3	54	8.2
Bamberg	-	0	6	10.9	8	12.7
Barnwell	6	19.3	14	14.3	13	12.8
Beaufort	12	5.4	45	6.9	26	4.5
Berkeley	21	9.6	59	9.1	52	8.1
Calhoun	1	6.0	5	10.0	5	9.4
Charleston	58	12.1	149	10.5	135	9.9
Cherokee	13	19.3	32	15.8	28	12.8
Chester	6	14.1	16	12.7	15	10.7
Chesterfield	4	7.5	16	10.1	14	8.1
Clarendon	3	7.8	10	8.2	15	11.5
Colleton	5	9.2	19	12.3	13	7.7
Darlington	15	17.8	36	13.9	32	11.5
Dillon	5	11.2	9	6.4	16	10.6
Dorchester	5	3.2	25	5.7	36	9.7
Edgefield	2	8.1	3	4.0	9	10.7
Fairfield	1	3.2	13	14.1	7	7.4
Florence	23	11.8	59	10.2	71	12.6
Georgetown	11	15.6	27	12.5	29	12.7
Greenville	44	7.5	113	6.6	95	5.8
Greenwood	14	15.4	39	15.0	24	8.8
Hampton	1	3.4	13	15.4	6	6.7
Horry	24	8.3	72	8.6	72	9.4
Jasper	7	18.7	10	10.0	9	9.8
Kershaw	4	5.2	9	4.2	16	7.6
Lancaster	8	10.6	21	9.0	25	10.4
Laurens	9	11.7	24	10.0	27	11.1
Lee	7	28.7	14	18.2	11	13.8
Lexington	19	6.0	54	5.7	68	7.6
McCormick	1	13.0	4	17.2	3	11.8
Marion	2	4.6	11	7.8	22	14.8
Marlboro	4	10.9	10	9.5	16	13.4
Newberry	3	5.8	9	6.0	15	10.0
Oconee	4	5.1	15	6.2	15	6.4
Orangeburg	19	14.0	43	11.1	43	11.4
Pickens	10	7.6	28	7.3	25	6.3
Richland	48	10.0	122	8.8	108	8.3
Saluda	1	3.9	4	5.5	8	10.6
Spartanburg	29	8.5	104	10.1	75	7.3
Sumter	18	10.9	46	9.3	47	9.5
Union	1	3.2	8	8.4	12	10.6
Williamsburg	5	11.1	14	9.9	31	20.0
York	21	7.8	51	6.8	62	8.9

<sup>1</sup>Rates per 1,000 live births. Rates calculated with 20 or fewer deaths are unreliable and should be used cautiously.

**Table 4-A.**  
**White<sup>1</sup> Infant Mortality and Infant Mortality Rates<sup>2</sup>**  
**South Carolina and Each County, 2005, 2003-2005, 2000-2002**  
**(Residence Data)**

County of Residence	2005		2003-2005		2000-2002	
	Number	Rate	Number	Rate	Number	Rate
<b>South Carolina</b>	262	7.0	723	6.6	606	5.7
Abbeville	1	5.5	4	6.7	4	5.9
Aiken	17	13.4	42	11.1	31	8.3
Allendale	1	37.0	1	11	2	24.4
Anderson	11	6.1	31	5.8	30	5.8
Bamberg	-	0	3	17.5	-	0
Barnwell	1	6.8	3	6.6	3	6.7
Beaufort	7	4.3	25	5.3	8	1.9
Berkeley	9	5.8	33	7.2	29	6.4
Calhoun	-	0	2	8.0	1	3.9
Charleston	30	10.4	62	7.2	44	5.6
Cherokee	6	12.1	19	12.6	20	12.2
Chester	3	13.0	8	11.8	4	5.6
Chesterfield	3	9.5	10	10.7	6	6.0
Clarendon	1	6.5	2	4.0	2	4.0
Colleton	2	6.8	7	8.7	3	3.4
Darlington	7	15.9	16	12.0	9	6.6
Dillon	2	9.7	2	3.1	-	0
Dorchester	2	1.8	16	5.2	16	6.0
Edgefield	2	15.3	2	4.8	3	6.4
Fairfield	-	0	1	3.5	1	3.4
Florence	5	5.3	18	6.1	16	5.5
Georgetown	5	12.2	12	9.7	6	4.9
Greenville	24	5.3	68	5.2	57	4.6
Greenwood	4	6.9	14	8.3	4	2.4
Hampton	-	0	3	9.3	-	0
Horry	16	7.1	41	6.3	29	5.0
Jasper	3	13.8	3	5.5	7	16.2
Kershaw	2	3.7	5	3.2	12	8.0
Lancaster	4	8.1	11	6.9	13	7.8
Laurens	7	13.0	12	7.1	17	10.0
Lee	1	15.6	2	10.2	1	4.9
Lexington	8	3.1	34	4.5	45	6.3
McCormick	-	0	-	0	-	0
Marion	-	0	1	2.1	6	11.0
Marlboro	1	8.1	4	10.1	4	8.5
Newberry	1	3.0	4	4.1	8	8.8
Oconee	4	5.6	14	6.3	14	6.7
Orangeburg	4	9.7	12	10.1	4	3.5
Pickens	7	5.8	21	6.0	23	6.4
Richland	18	8.6	35	5.8	21	3.6
Saluda	1	5.3	2	3.8	1	2.0
Spartanburg	22	8.6	68	8.8	46	6.0
Sumter	8	9.7	18	7.4	14	5.9
Union	1	4.7	6	9.7	5	7.1
Williamsburg	1	8.7	2	5.2	2	5.1
York	10	4.9	24	4.2	35	6.7

<sup>1</sup>Race of mother

<sup>2</sup>Rates per 1,000 live births. Rates calculated with 20 or fewer deaths are unreliable and should be used cautiously.

**Table 4-B.**  
**Black and Other<sup>1</sup> Infant Mortality and Infant Mortality Rates<sup>2</sup>**  
**South Carolina and Each County, 2005, 2003-2005, 2000-2002**  
**(Residence Data)**

County of Residence	2005		2003-2005		2000-2002	
	Number	Rate	Number	Rate	Number	Rate
<b>South Carolina</b>	287	14.3	813	13.7	884	14.7
Abbeville	3	34.9	12	39.0	11	31.6
Aiken	13	22.9	27	15.7	25	14.0
Allendale	1	8.3	7	19.0	4	8.8
Anderson	8	18.6	31	23.3	24	16.6
Bamberg	-	0	3	7.9	8	19.0
Barnwell	5	30.5	11	21.0	10	17.6
Beaufort	5	8.2	20	11.6	18	11.1
Berkeley	12	18.5	26	13.7	23	12.1
Calhoun	1	11.5	3	12.1	4	14.4
Charleston	28	14.7	87	15.5	91	15.7
Cherokee	7	39.3	13	25.1	8	14.3
Chester	3	15.3	8	13.7	11	16.0
Chesterfield	1	4.6	6	9.3	8	11.1
Clarendon	2	8.8	8	11.1	13	16.2
Colleton	3	12.0	12	16.1	10	12.3
Darlington	8	20.0	20	16.0	23	16.2
Dillon	3	12.4	7	9.1	16	19.3
Dorchester	3	6.5	9	7.0	20	18.9
Edgefield	-	0	1	3.0	6	16.3
Fairfield	1	4.8	12	19.0	6	9.2
Florence	18	18.1	41	14.6	55	20.3
Georgetown	6	20.3	15	16.3	23	21.7
Greenville	20	15.0	45	11.4	38	10.0
Greenwood	10	30.4	25	27.1	20	19.3
Hampton	1	5.6	10	19.2	6	11.4
Horry	8	12.4	31	16.6	43	22.8
Jasper	4	25.6	7	15.5	2	4.1
Kershaw	2	9.1	4	6.4	4	6.6
Lancaster	4	15.2	10	13.6	12	16.3
Laurens	2	8.7	12	16.9	10	13.9
Lee	6	33.5	12	21.0	10	16.8
Lexington	11	18.2	20	10.8	23	13.0
McCormick	1	21.3	4	26.0	3	18.4
Marion	2	6.8	10	10.7	16	17.0
Marlboro	3	12.4	6	9.1	12	16.6
Newberry	2	11.1	5	9.6	7	11.9
Oconee	-	0	1	4.7	1	4.1
Orangeburg	15	16.0	31	11.5	39	14.8
Pickens	3	31.6	7	21.7	2	5.8
Richland	30	11.2	87	11.3	87	12.0
Saluda	-	0	2	10.3	7	28.3
Spartanburg	7	8.1	36	14.0	29	11.2
Sumter	10	12.2	28	11.3	33	13.0
Union	-	0	2	6.0	7	16.6
Williamsburg	4	11.9	12	11.6	29	25.0
York	11	16.8	27	15.1	27	15.3

<sup>1</sup>Race of mother

<sup>2</sup>Rates per 1,000 live births. Rates calculated with 20 or fewer deaths are unreliable and should be used cautiously.



**Table 5.**

Infant, Neonatal and Postneonatal Mortality Rates<sup>1</sup> by Race<sup>2</sup>  
 and Percent Changes from 2004 to 2005  
 South Carolina  
 (Residence Data)

<b>Infant Mortality</b>			
Year	Total	White	Black & Other
2004	9.3	6.7	14.1
2005	9.5	7.0	14.3
<b>Percent Change</b>	2.2%	4.5%	1.4%

<b>Neonatal Mortality</b>			
Year	Total	White	Black & Other
2004	6.4	4.6	9.9
2005	5.9	4.2	9.2
<b>Percent Change</b>	-7.8%	-8.7%	-7.1%

<b>Postneonatal Mortality</b>			
Year	Total	White	Black & Other
2004	2.9	2.1	4.2
2005	3.6	2.8	5.1
<b>Percent Change</b>	24.1%	33.3%	21.4%

<sup>1</sup>Rates per 1,000 live births

<sup>2</sup>Race of mother

**Table 6.**  
**Neonatal Mortality and Neonatal Mortality Rates<sup>1</sup>**  
**South Carolina and Each County, 2005, 2003-2005, 2000-2002**  
**(Residence Data)**

County of Residence	2005		2003-2005		2000-2002	
	Number	Rate	Number	Rate	Number	Rate
<b>South Carolina</b>	341	5.9	1,032	6.1	1,023	6.2
Abbeville	3	11.2	14	15.5	14	13.6
Aiken	17	9.2	47	8.5	38	6.9
Allendale	1	6.8	6	13.1	3	5.6
Anderson	13	5.8	48	7.2	38	5.8
Bamberg	-	0	4	7.3	6	9.5
Barnwell	4	12.9	10	10.2	9	8.9
Beaufort	7	3.1	30	4.6	16	2.8
Berkeley	16	7.3	38	5.8	39	6.1
Calhoun	1	6.0	4	8.0	5	9.4
Charleston	41	8.5	114	8.0	108	7.9
Cherokee	7	10.4	19	9.4	11	5.0
Chester	5	11.7	13	10.3	9	6.4
Chesterfield	3	5.6	13	8.2	11	6.4
Clarendon	1	2.6	7	5.7	9	6.9
Colleton	1	1.8	12	7.7	11	6.5
Darlington	9	10.7	23	8.9	27	9.7
Dillon	3	6.7	4	2.8	10	6.6
Dorchester	5	3.2	15	3.4	22	5.9
Edgefield	1	4.0	2	2.7	7	8.3
Fairfield	-	0	10	10.9	5	5.3
Florence	14	7.2	41	7.1	46	8.2
Georgetown	7	9.9	18	8.4	23	10.1
Greenville	27	4.6	76	4.4	65	4.0
Greenwood	11	12.1	33	12.7	21	7.7
Hampton	1	3.4	9	10.6	4	4.5
Horry	14	4.8	45	5.4	49	6.4
Jasper	2	5.3	3	3.0	6	6.5
Kershaw	2	2.6	4	1.8	14	6.6
Lancaster	6	7.9	9	3.9	17	7.0
Laurens	3	3.9	16	6.7	14	5.8
Lee	5	20.5	10	13.0	11	13.8
Lexington	8	2.5	30	3.2	44	4.9
McCormick	1	13.0	3	12.9	2	7.9
Marion	-	0	7	5.0	15	10.1
Marlboro	2	5.5	7	6.6	10	8.4
Newberry	2	3.9	6	4.0	12	8.0
Oconee	3	3.8	11	4.5	9	3.9
Orangeburg	13	9.6	29	7.5	31	8.2
Pickens	5	3.8	17	4.4	14	3.6
Richland	34	7.1	78	5.6	64	4.9
Saluda	1	3.9	3	4.1	5	6.6
Spartanburg	15	4.4	61	5.9	39	3.8
Sumter	8	4.8	27	5.5	32	6.5
Union	-	0	6	6.3	8	7.1
Williamsburg	3	6.7	10	7.0	23	14.8
York	16	5.9	40	5.3	47	6.7

<sup>1</sup>Rates per 1,000 live births. Rates calculated with 20 or fewer deaths are unreliable and should be used cautiously.

**Table 6-A.**  
**White<sup>1</sup> Neonatal Mortality and Neonatal Mortality Rates<sup>2</sup>**  
**South Carolina and Each County, 2005, 2003-2005, 2000-2002**  
**(Residence Data)**

County of Residence	2005		2003-2005		2000-2002	
	Number	Rate	Number	Rate	Number	Rate
<b>South Carolina</b>	157	4.2	466	4.2	404	3.8
Abbeville	-	0	2	3.4	3	4.4
Aiken	8	6.3	30	7.9	22	5.9
Allendale	1	37.0	1	11.0	2	24.4
Anderson	8	4.4	21	3.9	19	3.7
Bamberg	-	0	2	11.7	-	0
Barnwell	1	6.8	2	4.4	2	4.5
Beaufort	4	2.5	15	3.2	4	1.0
Berkeley	6	3.9	21	4.6	20	4.4
Calhoun	-	0	1	4.0	1	3.9
Charleston	19	6.6	44	5.1	38	4.8
Cherokee	2	4.0	11	7.3	8	4.9
Chester	3	13.0	7	10.3	2	2.8
Chesterfield	2	6.3	9	9.6	4	4.0
Clarendon	-	0	1	2.0	1	2.0
Colleton	-	0	3	3.7	3	3.4
Darlington	5	11.4	11	8.3	9	6.6
Dillon	1	4.9	1	1.6	-	0
Dorchester	2	1.8	7	2.3	10	3.8
Edgefield	1	7.6	1	2.4	1	2.1
Fairfield	-	0	1	3.5	1	3.4
Florence	5	5.3	14	4.8	10	3.4
Georgetown	3	7.3	8	6.5	3	2.5
Greenville	15	3.3	45	3.4	36	2.9
Greenwood	3	5.2	13	7.7	4	2.4
Hampton	-	0	2	6.2	-	0
Horry	10	4.4	24	3.7	17	2.9
Jasper	-	0	-	0	5	11.6
Kershaw	2	3.7	3	1.9	10	6.7
Lancaster	2	4.0	2	1.3	11	6.6
Laurens	2	3.7	5	3.0	10	5.9
Lee	1	15.6	1	5.1	1	4.9
Lexington	2	0.8	21	2.8	32	4.4
McCormick	-	0	-	0	-	0
Marion	-	0	1	2.1	4	7.3
Marlboro	-	0	3	7.6	1	2.1
Newberry	-	0	1	1.0	6	6.6
Oconee	3	4.2	10	4.5	9	4.3
Orangeburg	3	7.2	8	6.7	3	2.6
Pickens	3	2.5	13	3.7	12	3.3
Richland	16	7.6	27	4.4	18	3.1
Saluda	1	5.3	1	1.9	1	2
Spartanburg	12	4.7	39	5.0	25	3.3
Sumter	4	4.9	11	4.5	8	3.4
Union	-	0	4	6.5	2	2.8
Williamsburg	1	8.7	2	5.2	1	2.6
York	6	2.9	17	3.0	25	4.8

<sup>1</sup>Race of mother

<sup>2</sup>Rates per 1,000 live births. Rates calculated with 20 or fewer deaths are unreliable and should be used cautiously.

**Table 6-B.**

Black and Other<sup>1</sup> Neonatal Mortality and Neonatal Mortality Rates<sup>2</sup>  
 South Carolina and Each County, 2005, 2003-2005, 2000-2002  
 (Residence Data)

County of Residence	2005		2003-2005		2000-2002	
	Number	Rate	Number	Rate	Number	Rate
<b>South Carolina</b>	184	9.2	566	9.6	618	10.3
Abbeville	3	34.9	12	39.0	10	28.7
Aiken	9	15.9	17	9.9	16	8.9
Allendale	-	0	5	13.6	1	2.2
Anderson	5	11.6	27	20.3	19	13.2
Bamberg	-	0	2	5.3	6	14.3
Barnwell	3	18.3	8	15.3	7	12.3
Beaufort	3	4.9	15	8.7	12	7.4
Berkeley	10	15.4	17	9.0	19	10.0
Calhoun	1	11.5	3	12.1	4	14.4
Charleston	22	11.6	70	12.5	70	12.1
Cherokee	5	28.1	8	15.5	3	5.4
Chester	2	10.2	6	10.3	7	10.2
Chesterfield	1	4.6	4	6.2	7	9.7
Clarendon	1	4	6	8.3	8	10.0
Colleton	1	4.0	9	12.1	8	9.8
Darlington	4	10.0	12	9.6	18	12.7
Dillon	2	8.3	3	3.9	10	12.0
Dorchester	3	6.5	8	6.3	12	11.3
Edgefield	-	0	1	3.0	6	16.3
Fairfield	-	0	9	14.2	4	6.1
Florence	9	9.0	27	9.6	36	13.3
Georgetown	4	13.6	10	10.9	20	18.9
Greenville	12	9.0	31	7.9	29	7.6
Greenwood	8	24.3	20	21.7	17	16.4
Hampton	1	5.6	7	13.4	4	7.6
Horry	4	6.2	21	11.2	32	16.9
Jasper	2	12.8	3	6.7	1	2.0
Kershaw	-	0	1	1.6	4	6.6
Lancaster	4	15.2	7	9.5	6	8.2
Laurens	1	4.3	11	15.5	4	5.6
Lee	4	22.3	9	15.8	10	16.8
Lexington	6	9.9	9	4.8	12	6.8
McCormick	1	21.3	3	19.5	2	12.3
Marion	-	0	6	6.4	11	11.7
Marlboro	2	8.3	4	6.1	9	12.5
Newberry	2	11.1	5	9.6	6	10.2
Oconee	-	0	1	4.7	-	0
Orangeburg	10	10.7	21	7.8	28	10.6
Pickens	2	21.1	4	12.4	2	5.8
Richland	18	6.7	51	6.6	46	6.3
Saluda	-	0	2	10.3	4	16.2
Spartanburg	3	3.5	22	8.6	14	5.4
Sumter	4	4.9	16	6.4	24	9.4
Union	-	0	2	6.0	6	14.2
Williamsburg	2	6.0	8	7.7	22	19.0
York	10	15.3	23	12.9	22	12.5

<sup>1</sup>Race of mother

<sup>2</sup>Rates per 1,000 live births. Rates calculated with 20 or fewer deaths are unreliable and should be used cautiously.

**Table 7.**  
**Postneonatal Mortality and Postneonatal Mortality Rates<sup>1</sup>**  
**South Carolina and Each County, 2005, 2003-2005, 2000-2002**  
**(Residence Data)**

County of Residence	2005		2003-2005		2000-2002	
	Number	Rate	Number	Rate	Number	Rate
<b>South Carolina</b>	208	3.6	504	3.0	468	2.8
Abbeville	1	3.7	2	2.2	2	1.9
Aiken	13	7.0	22	4.0	18	3.2
Allendale	1	6.8	2	4.4	3	5.6
Anderson	6	2.7	14	2.1	16	2.4
Bamberg	-	0	2	3.6	2	3.2
Barnwell	2	6.4	4	4.1	4	3.9
Beaufort	5	2.2	15	2.3	10	1.7
Berkeley	5	2.3	21	3.2	13	2.0
Calhoun	-	0	1	2.0	-	0
Charleston	17	3.5	35	2.5	27	2.0
Cherokee	6	8.9	13	6.4	17	7.8
Chester	1	2.3	3	2.4	6	4.3
Chesterfield	1	1.9	3	1.9	3	1.7
Clarendon	2	5.2	3	2.5	6	4.6
Colleton	4	7.4	7	4.5	2	1.2
Darlington	6	7.1	13	5.0	5	1.8
Dillon	2	4.5	5	3.5	6	4.0
Dorchester	-	0	10	2.3	14	3.8
Edgefield	1	4.0	1	1.3	2	2.4
Fairfield	1	3.2	3	3.3	2	2.1
Florence	9	4.6	18	3.1	25	4.5
Georgetown	4	5.7	9	4.2	6	2.6
Greenville	17	2.9	37	2.2	30	1.8
Greenwood	3	3.3	6	2.3	3	1.1
Hampton	-	0	4	4.7	2	2.2
Horry	10	3.4	27	3.2	23	3.0
Jasper	5	13.3	7	7.0	3	3.3
Kershaw	2	2.6	5	2.3	2	0.9
Lancaster	2	2.6	12	5.2	8	3.3
Laurens	6	7.8	8	3.3	13	5.4
Lee	2	8.2	4	5.2	-	0
Lexington	11	3.5	24	2.5	24	2.7
McCormick	-	0	1	4.3	1	3.9
Marion	2	4.6	4	2.8	7	4.7
Marlboro	2	5.5	3	2.8	6	5.0
Newberry	1	1.9	3	2.0	3	2.0
Oconee	1	1.3	4	1.6	6	2.6
Orangeburg	6	4.4	14	3.6	12	3.2
Pickens	5	3.8	11	2.9	11	2.8
Richland	14	2.9	44	3.2	44	3.4
Saluda	-	0	1	1.4	3	4.0
Spartanburg	14	4.1	43	4.2	36	3.5
Sumter	10	6.0	19	3.9	15	3.0
Union	1	3.2	2	2.1	4	3.5
Williamsburg	2	4.4	4	2.8	8	5.2
York	5	1.9	11	1.5	15	2.2

<sup>1</sup>Rates per 1,000 live births. Rates calculated with 20 or fewer deaths are unreliable and should be used cautiously.

**Table 7-A.**

White<sup>1</sup> Postneonatal Mortality and Postneonatal Mortality Rates<sup>2</sup>  
 South Carolina and Each County, 2005, 2003-2005, 2000-2002  
 (Residence Data)

County of Residence	2005		2003-2005		2000-2002	
	Number	Rate	Number	Rate	Number	Rate
<b>South Carolina</b>	105	2.8	257	2.3	202	1.9
Abbeville	1	5.5	2	3.4	1	1.5
Aiken	9	7.1	12	3.2	9	2.4
Allendale	-	0	-	0	-	0
Anderson	3	1.7	10	1.9	11	2.1
Bamberg	-	0	1	5.8	-	0
Barnwell	-	0	1	2.2	1	2.2
Beaufort	3	1.8	10	2.1	4	1.0
Berkeley	3	1.9	12	2.6	9	2.0
Calhoun	-	0	1	4.0	-	0
Charleston	11	3.8	18	2.1	6	0.8
Cherokee	4	8.1	8	5.3	12	7.3
Chester	-	0	1	1.5	2	2.8
Chesterfield	1	3.2	1	1.1	2	2.0
Clarendon	1	6.5	1	2.0	1	2
Colleton	2	6.8	4	5.0	-	0
Darlington	2	4.5	5	3.8	-	0
Dillon	1	4.9	1	1.6	-	0
Dorchester	-	0	9	2.9	6	2.3
Edgefield	1	7.6	1	2.4	2	4.2
Fairfield	-	0	-	0	-	0
Florence	-	0	4	1.4	6	2.1
Georgetown	2	4.9	4	3.2	3	2.5
Greenville	9	2.0	23	1.7	21	1.7
Greenwood	1	1.7	1	0.6	-	0
Hampton	-	0	1	3.1	-	0
Horry	6	2.7	17	2.6	12	2.1
Jasper	3	13.8	3	5.5	2	4.6
Kershaw	-	0	2	1.3	2	1.3
Lancaster	2	4.0	9	5.7	2	1.2
Laurens	5	9.3	7	4.2	7	4.1
Lee	-	0	1	5.1	-	0
Lexington	6	2.3	13	1.7	13	1.8
McCormick	-	0	-	0	-	0
Marion	-	0	-	0	2	3.7
Marlboro	1	8.1	1	2.5	3	6.4
Newberry	1	3.0	3	3.1	2	2.2
Oconee	1	1.4	4	1.8	5	2.4
Orangeburg	1	2	4	3.4	1	0.9
Pickens	4	3.3	8	2.3	11	3.1
Richland	2	1.0	8	1.3	3	0.5
Saluda	-	0	1	1.9	-	0
Spartanburg	10	3.9	29	3.8	21	2.8
Sumter	4	4.9	7	2.9	6	2.5
Union	1	4.7	2	3.2	3	4.3
Williamsburg	-	0	-	0	1	2.6
York	4	2.0	7	1.2	10	1.9

<sup>1</sup>Race of mother

<sup>2</sup>Rates per 1,000 live births. Rates calculated with 20 or fewer deaths are unreliable and should be used cautiously.

**Table 7-B.**

Black and Other<sup>1</sup> Postneonatal Mortality and Postneonatal Mortality Rates<sup>2</sup>  
 South Carolina and Each County, 2005, 2003-2005, 2000-2002  
 (Residence Data)

County of Residence	2005		2003-2005		2000-2002	
	Number	Rate	Number	Rate	Number	Rate
<b>South Carolina</b>	103	5.1	247	4.2	266	4.4
Abbeville	-	0	-	0	1	2.9
Aiken	4	7.1	10	5.8	9	5.0
Allendale	1	8.3	2	5.4	3	6.6
Anderson	3	7.0	4	3.0	5	3.5
Bamberg	-	0	1	2.6	2	4.8
Barnwell	2	12.2	3	5.7	3	5.3
Beaufort	2	3.3	5	2.9	6	3.7
Berkeley	2	3.1	9	4.8	4	2.1
Calhoun	-	0	-	0	-	0
Charleston	6	3.2	17	3.0	21	3.6
Cherokee	2	11.2	5	9.7	5	9.0
Chester	1	5.1	2	3.4	4	5.8
Chesterfield	-	0	2	3.1	1	1.4
Clarendon	1	4.4	2	2.8	5	6.2
Colleton	2	8.0	3	4.0	2	2.5
Darlington	4	10.0	8	6.4	5	3.5
Dillon	1	4.1	4	5.2	6	7.2
Dorchester	-	0	1	0.8	8	7.5
Edgefield	-	0	-	0	-	0
Fairfield	1	4.8	3	4.7	2	3.1
Florence	9	9.0	14	5.0	19	7.0
Georgetown	2	6.8	5	5.4	3	2.8
Greenville	8	6.0	14	3.6	9	2.4
Greenwood	2	6.1	5	5.4	3	2.9
Hampton	-	0	3	5.7	2	3.8
Horry	4	6.2	10	5.3	11	5.8
Jasper	2	12.8	4	8.9	1	2
Kershaw	2	9.1	3	4.8	-	0
Lancaster	-	0	3	4.1	6	8.2
Laurens	1	4.3	1	1.4	6	8.3
Lee	2	11.2	3	5.3	-	0
Lexington	5	8.3	11	5.9	11	6.2
McCormick	-	0	1	6.5	1	6.1
Marion	2	6.8	4	4.3	5	5.3
Marlboro	1	4.1	2	3.0	3	4.2
Newberry	-	0	-	0	1	1.7
Oconee	-	0	-	0	1	4.1
Orangeburg	5	5.3	10	3.7	11	4.2
Pickens	1	10.5	3	9.3	-	0
Richland	12	4.5	36	4.7	41	5.6
Saluda	-	0	-	0	3	12.1
Spartanburg	4	4.6	14	5.4	15	5.8
Sumter	6	7.3	12	4.8	9	3.5
Union	-	0	-	0	1	2.4
Williamsburg	2	6.0	4	3.9	7	6.0
York	1	1.5	4	2.2	5	2.8

<sup>1</sup>Race of mother<sup>2</sup>Rates per 1,000 live births. Rates calculated with 20 or fewer deaths are unreliable and should be used cautiously.

**Table 8.**  
**Leading Causes of Infant Death by Age at Death**  
**South Carolina, 2005**  
**(Residence Data)**

Causes of Death (ICD-10 Codes)	Total	Under 1 Day	1-6 Days	7-27 Days	Neonatal <28 days)	Post-Neonatal (28-364days)
<b>Total Infant Deaths</b>	549	204	66	71	341	208
Disorders related to short gestation and low birthweight, NEC (P07)	81	76	3	1	80	1
Congenital malformations, deformations, etc. (Q00-Q99)	79	25	14	10	49	30
Sudden infant death syndrome (R95)	48	-	-	5	5	43
Fetus and newborn affected by maternal complications of pregnancy (P01)	28	28	-	-	28	-
Accidents (V01-X59, Y85-Y86)	28	-	-	4	4	24
Newborn affected by complication of placenta, ect. (P02)	25	23	2	-	25	-
Respiratory distress of newborn (P22)	25	10	10	5	25	-
Bacterial sepsis of newborn (P36)	18	2	5	9	16	2
Necrotizing Enterocolitis of newborn (P77)	18	-	1	12	13	5
Neonatal hemorrhage (P50-P52, P54)	13	2	9	2	13	-
All other causes	186	38	22	23	83	103



**Table 8a.**  
 Leading Causes of White<sup>1</sup> Infant Death by Age at Death  
 South Carolina, 2005  
 (Residence Data)

Causes of Death (ICD-10 Codes)	Total	Under 1 Day	1-6 Days	7-27 Days	Neonatal (<28days)	Post-Neonatal (28-364 days)
<b>Total White Infant Deaths</b>	261	90	35	36	161	100
Congenital malformations, deformations, etc. (Q00-Q99)	48	16	9	8	33	15
Disorders related to short gestation and low birthweight, NEC (P07)	31	29	2	-	31	-
Sudden infant death syndrome (R95)	25	-	-	3	3	22
Accidents (V01-X59, Y85-Y86)	16	-	-	2	2	14
Newborn affected by complication of placenta, ect. (P02)	14	12	2	-	14	-
Fetus and newborn affected by maternal complications of pregnancy (P01)	11	11	-	-	11	-
Respiratory distress of newborn (P22)	11	5	6	-	11	-
Intrauterine hypoxia and birth asphyxia (P20-P21)	7	2	1	4	7	-
Neonatal hemorrhage (P50-P52, P54)	7	2	4	1	7	-
Diseases of Circulatory System (I00-I99)	7	-	-	1	1	6
All other causes	84	13	11	17	41	43

<sup>1</sup> Race of child

**Table 8b.**  
 Leading Causes of Black and Other<sup>1</sup> Infant Death by Age at Death  
 South Carolina, 2005  
 (Residence Data)

Causes of Death (ICD-10 Codes)	Total	Under 1 Day	1-6 Days	7-27 Days	Neonatal (<28days)	Post-Neonatal (28-364 days)
<b>Total Black and Other Infant Deaths</b>	286	113	31	35	179	107
Disorders related to short gestation and low birthweight, NEC (P07)	50	47	1	1	49	1
Congenital malformations, deformations, etc. (Q00-Q99)	31	9	5	2	16	15
Sudden infant death syndrome (R95)	23	-	-	2	2	21
Fetus and newborn affected by maternal complications of pregnancy (P01)	17	17	-	-	17	-
Respiratory distress of newborn (P22)	14	5	4	5	14	-
Bacterial sepsis of newborn (P36)	13	1	4	6	11	2
Accidents (V01-X59, Y85-Y86)	12	-	-	2	2	10
Necrotizing Enterocolitis of newborn (P77)	12	-	-	8	8	4
Newborn affected by complication of placenta, ect. (P02)	11	11	-	-	11	-
Neonatal hemorrhage (P50-P52, P54)	6	-	5	1	6	-
Assault (Homicide) (X85-Y09, Y87.1)	6	-	-	-	-	6
All other causes	91	23	12	8	43	48

<sup>1</sup> Race of child

**Table 8c.**  
 Percent Changes of Leading Causes of Infant Death  
 from 2004-2005, South Carolina

Cause of Infant Death Ranked by 2005 Data (ICD-10 Codes)	2004	2005	% Change
<b>Total Infant Death</b>	<b>524</b>	<b>549</b>	<b>4.8%</b>
Disorders related to short gestation and low birthweight, NEC (P07)	91	81	-11.0%
Congenital malformations, deformations, etc. (Q00-Q99)	94	79	-16.0%
Sudden infant death syndrome (R95)	29	48	65.5%
Fetus and newborn affected by maternal complications of pregnancy (P01)	38	28	-26.3%
Accidents (V01-X59, Y85-Y86)	21	28	33.3%
Newborn affected by complication of placenta, ect. (P02)	22	25	13.6%
Respiratory distress of newborn (P22)	23	25	8.7%
Bacterial sepsis of newborn (P36)	22	18	-18.2%
Necrotizing Enterocolitis of newborn (P77)	9	18	100.0%
Neonatal hemorrhage (P50-P52, P54)	9	13	44.4%
All other causes	166	186	12.0%

**Table 9.**

Comparison of Characteristics from Birth Files, by Race<sup>1</sup>  
 Z-tests for differences in proportions<sup>3</sup>  
 South Carolina, 2004 to 2005  
 (Residence Data)

	2004		2005		Z-TEST	P-VALUE
	Percent	Number	Percent	Number		

MOTHER < 18 YEARS						
TOTAL <sup>2</sup>	4.62	2,613	4.52	2,603	-0.7866	0.4315
White	3.36	1,238	3.28	1,227	-0.5620	0.5741
Black & Other	7.00	1,373	6.83	1,372	-0.6546	0.5127

MARITAL STATUS: UNMARRIED						
TOTAL <sup>2</sup>	26.12	14771	25.01	14390	-4.3124	0.0000
White	14.04	5177	13.01	4863	-4.0884	0.0000
Black & Other	48.84	9580	47.29	9495	-3.0940	0.0020

< 5 PRENATAL CARE VISITS						
TOTAL <sup>2</sup>	5.91	3,340	6.16	3,547	1.8266	0.0678
White	4.78	1,761	5.14	1,919	2.2568	0.0240
Black & Other	8.03	1,575	8.04	1,614	0.0318	0.9746

PRENATAL CARE BEGAN FIRST TRIMESTER						
TOTAL <sup>2</sup>	68.41	38,681	69.33	39,889	3.3426	0.0008
White	72.71	26,811	73.23	27,364	1.5850	0.1130
Black & Other	60.36	11,841	62.17	12,484	3.6959	0.0002

PROPORTION VERY LOW BIRTHWEIGHT						
TOTAL <sup>2</sup>	2.11	1,193	2.08	1,195	-0.3894	0.6970
White	1.42	524	1.35	506	-0.7803	0.4352
Black & Other	3.40	666	3.39	681	-0.0206	0.9835

PROPORTION LOW BIRTHWEIGHT						
TOTAL <sup>2</sup>	10.20	5,769	10.25	5,895	0.2372	0.8125
White	7.69	2,837	7.71	2,882	0.0945	0.9247
Black & Other	14.91	2,924	14.90	2,991	-0.0302	0.9759

<sup>1</sup>Race of mother

<sup>2</sup>Includes unknown races

<sup>3</sup>Proportions are expressed as percentages

**Table 9. (continued)**

Comparison of Characteristics from Birth Files, by Race<sup>1</sup>  
 Z-tests for differences in proportions<sup>3</sup>  
 South Carolina, 2004 to 2005  
 (Residence Data)

	2004		2005		Z-TEST	P-VALUE
	Percent	Number	Percent	Number		

KESSNER INDEX: ADEQUATE						
TOTAL <sup>2</sup>	59.93	33,886	60.52	34,821	2.0311	0.0422
White	63.87	23,550	64.24	24,004	1.0473	0.2949
Black & Other	52.57	10,312	53.71	10,784	2.2674	0.0234

KESSNER INDEX: LESS THAN ADEQUATE						
TOTAL <sup>2</sup>	35.83	20,261	35.35	20,341	-1.6952	0.0900
White	31.98	11,791	31.80	11,884	-0.5108	0.6095
Black & Other	43.06	8,446	41.87	8,408	-2.3865	0.0170

KOTELCHUCK INDEX: ADEQUATE PLUS						
TOTAL <sup>2</sup>	42.26	23,896	43.97	25,299	5.8226	0.0000
White	42.09	15,519	43.70	16,329	4.4319	0.0000
Black & Other	42.61	8,358	44.50	8,935	3.7948	0.0001

KOTELCHUCK INDEX: ADEQUATE						
TOTAL <sup>2</sup>	28.44	16,081	27.21	15,656	-4.6370	0.0000
White	31.42	11,584	30.16	11,269	-3.7162	0.0002
Black & Other	22.89	4,490	21.79	4,376	-2.6229	0.0087

KOTELCHUCK INDEX: INTERMEDIATE						
TOTAL <sup>2</sup>	8.70	4,921	8.34	4,801	-2.1717	0.0299
White	9.18	3,383	8.75	3,269	-2.0349	0.0419
Black & Other	7.82	1,534	7.59	1,525	-0.8424	0.3996

KOTELCHUCK INDEX: INADEQUATE						
TOTAL <sup>2</sup>	18.89	10,681	19.22	11,061	1.4351	0.1513
White	15.75	5,806	16.29	6,086	2.0084	0.0446
Black & Other	24.76	4,856	24.62	4,943	-0.3206	0.7485

HISPANIC MOTHER						
TOTAL <sup>2</sup>	7.66	4,332	8.64	4,970	6.0249	0.0000
White	11.20	4,129	12.54	4,687	5.6639	0.0000
Black & Other	0.88	173	1.17	235	2.8482	0.0044

<sup>1</sup>Race of mother

<sup>2</sup>Includes unknown races

<sup>3</sup>Proportions are expressed as percentages

**Table 9-A.**

Comparison of Characteristics of Infants who died, by Race<sup>1</sup>  
 Z-tests for differences in proportions<sup>3</sup>  
 South Carolina, 2004 to 2005  
 (Residence Data)

	2004		2005		Z-TEST	P-VALUE
	Percent	Number	Percent	Number		

MOTHER < 18 YEARS						
TOTAL <sup>2</sup>	7.06	37	6.56	36	-0.3275	0.7433
White	6.07	15	5.73	15	-0.1665	0.8678
Black & Other	7.94	22	7.32	21	-0.2797	0.7797

MARITAL STATUS: UNMARRIED						
TOTAL <sup>2</sup>	40.27	211	49.00	269	2.8752	0.0040
White	25.91	64	29.01	76	0.7820	0.4342
Black & Other	53.07	147	67.25	193	3.4403	0.0006

< 5 PRENATAL CARE VISITS						
TOTAL <sup>2</sup>	25.76	135	25.50	140	-0.0984	0.9216
White	23.08	57	19.47	51	-0.9959	0.3193
Black & Other	28.16	78	31.01	89	0.7416	0.4583

PRENATAL CARE BEGAN FIRST TRIMESTER						
TOTAL <sup>2</sup>	57.82	303	61.57	338	1.2494	0.2115
White	61.54	152	64.12	168	0.6030	0.5465
Black & Other	54.51	151	59.23	170	1.1318	0.2577

PROPORTION VERY LOW BIRTHWEIGHT						
TOTAL <sup>2</sup>	61.64	323	57.56	316	-1.3619	0.1732
White	50.20	124	49.62	130	-0.1317	0.8952
Black & Other	71.84	199	64.81	186	-1.7939	0.0728

PROPORTION LOW BIRTHWEIGHT						
TOTAL <sup>2</sup>	73.66	386	70.86	389	-1.0266	0.3046
White	65.59	162	64.50	169	-0.2561	0.7979
Black & Other	80.87	224	76.66	220	-1.2217	0.2218

<sup>1</sup>Race of mother

<sup>2</sup>Includes unknown races

<sup>3</sup>Proportions are expressed as percentages

**Table 9-A. (continued)**Comparison of Characteristics of Infants who died, by Race<sup>1</sup>Z-tests for differences in proportions<sup>3</sup>

South Carolina, 2004 to 2005

(Residence Data)

	2004		2005		Z-TEST	P-VALUE
	Percent	Number	Percent	Number		

KESSNER INDEX: ADEQUATE						
TOTAL <sup>2</sup>	50.57	265	53.92	296	1.0961	0.2730
White	52.23	129	56.49	148	0.9649	0.3346
Black & Other	49.10	136	51.57	148	0.5866	0.5575

KESSNER INDEX: LESS THAN ADEQUATE						
TOTAL <sup>2</sup>	42.18	221	40.44	222	-0.5781	0.5632
White	38.87	96	37.79	99	-0.2505	0.8022
Black & Other	45.13	125	42.86	123	-0.5428	0.5873

KOTELCHUCK INDEX: ADEQUATE PLUS						
TOTAL <sup>2</sup>	54.77	287	56.10	308	0.4385	0.6610
White	54.66	135	56.87	149	0.5028	0.6151
Black & Other	54.87	152	55.40	159	0.1258	0.8999

KOTELCHUCK INDEX: ADEQUATE						
TOTAL <sup>2</sup>	12.60	66	9.29	51	-1.7366	0.0825
White	15.38	38	11.07	29	-1.4394	0.1500
Black & Other	10.11	28	7.67	22	-1.0203	0.3076

KOTELCHUCK INDEX: INTERMEDIATE						
TOTAL <sup>2</sup>	4.39	23	5.83	32	1.0688	0.2852
White	6.48	16	6.49	17	0.0050	0.9960
Black & Other	2.53	7	5.23	15	1.6553	0.0979

KOTELCHUCK INDEX: INADEQUATE						
TOTAL <sup>2</sup>	17.94	94	22.40	123	1.8203	0.0687
White	14.17	35	19.85	52	1.7005	0.0890
Black & Other	21.30	59	24.74	71	0.9695	0.3323

HISPANIC MOTHER						
TOTAL <sup>2</sup>	5.92	31	7.83	43	1.2383	0.2156
White	12.55	31	15.27	40	0.8841	0.3766
Black & Other	0.00	0	1.05	3	1.7062	0.0880

<sup>1</sup>Race of mother<sup>2</sup>Includes unknown races<sup>3</sup>Proportions are expressed as percentages

**Table 10.**  
 Infant Mortality Rates<sup>1</sup> by Race<sup>2</sup> and Birthweight<sup>3</sup> Group  
 South Carolina  
 2003, 2004, and 2005  
 (Residence Data)

<b>Infant Mortality for Very Low Birthweight (0-1499 grams)</b>									
	Total			White			Black & Other		
Year	Number of Live Birth	Number of Infant Death	Rate	Number of Live Birth	Number of Infant Death	Rate	Number of Live Birth	Number of Infant Death	Rate
2003	1,157*	296	255.8	508	119	234.3	648	177	273.1
2004	1,193*	323	270.7	524	124	236.6	666	199	298.8
2005	1,195*	316	264.4	506	130	256.9	681	186	273.1

<b>Infant Mortality for Intermediate Low Birthweight (1500-2499 grams)</b>									
	Total			White			Black & Other		
Year	Number of Live Birth	Number of Infant Death	Rate	Number of Live Birth	Number of Infant Death	Rate	Number of Live Birth	Number of Infant Death	Rate
2003	4,429	59	13.3	2,231	32	14.3	2,198	27	12.3
2004	4,576*	63	13.8	2,313	38	16.4	2,258	25	11.1
2005	4,700*	73	15.5	2,376	39	16.4	2,310	34	14.7

<b>Infant Mortality for Normal Birthweight (2500+ grams)</b>									
	Total			White			Black & Other		
Year	Number of Live Birth	Number of Infant Death	Rate	Number of Live Birth	Number of Infant Death	Rate	Number of Live Birth	Number of Infant Death	Rate
2003	49,870*	106	2.1	33,262	63	1.9	16,604	43	2.6
2004	50,765*	133	2.6	34,031	81	2.4	16,688	52	3.1
2005	51,622*	154	3.0	34,475	93	2.7	17,078	61	3.6

<sup>1</sup>Rates per 1,000 live births

<sup>2</sup>Race of mother

<sup>3</sup>Does not include missing birthweights

\*Includes unknown race



**Table 10-A.**  
 Neonatal Mortality Rates<sup>1</sup> by Race<sup>2</sup> and Birthweight<sup>3</sup> Group  
 South Carolina  
 2003, 2004, and 2005  
 (Residence Data)

<b>Neonatal Mortality for Very Low Birthweight (0-1499 grams)</b>									
	Total			White			Black & Other		
Year	Number of Live Birth	Number of Infant Death	Rate	Number of Live Birth	Number of Infant Death	Rate	Number of Live Birth	Number of Infant Death	Rate
2003	1,157*	261	225.6	508	100	196.9	648	161	248.5
2004	1,193*	274	229.7	524	108	206.1	666	166	249.2
2005	1,195*	263	220.0	506	111	219.4	681	152	223.2

<b>Neonatal Mortality for Intermediate Low Birthweight (1500-2499 grams)</b>									
	Total			White			Black & Other		
Year	Number of Live Birth	Number of Infant Death	Rate	Number of Live Birth	Number of Infant Death	Rate	Number of Live Birth	Number of Infant Death	Rate
2003	4,429	31	7.0	2,231	17	7.6	2,198	14	6.4
2004	4,576*	40	8.7	2,313	25	10.8	2,258	15	6.6
2005	4,700*	32	6.8	2,376	19	8.0	2,310	13	5.6

<b>Neonatal Mortality for Normal Birthweight (2500+ grams)</b>									
	Total			White			Black & Other		
Year	Number of Live Birth	Number of Infant Death	Rate	Number of Live Birth	Number of Infant Death	Rate	Number of Live Birth	Number of Infant Death	Rate
2003	49,870*	36	0.7	33,262	23	0.7	16,604	13	0.8
2004	50,765*	47	0.9	34,031	35	1.0	16,688	12	0.7
2005	51,622*	41	0.8	34,475	27	0.8	17,078	14	0.8

<sup>1</sup>Rates per 1,000 live births

<sup>2</sup>Race of mother

<sup>3</sup>Does not include missing birthweights

\*Includes unknown race

**Table 10-B.**  
 Postneonatal Mortality Rates<sup>1</sup> by Race<sup>2</sup> and Birthweight<sup>3</sup> Group  
 South Carolina  
 2003, 2004, and 2005  
 (Residence Data)

<b>Postneonatal Mortality for Very Low Birthweight (0-1499 grams)</b>									
	Total			White			Black & Other		
Year	Number of Live Birth	Number of Infant Death	Rate	Number of Live Birth	Number of Infant Death	Rate	Number of Live Birth	Number of Infant Death	Rate
2003	1,157*	35	30.3	508	19	37.4	648	16	24.7
2004	1,193*	49	41.1	524	16	30.5	666	33	49.5
2005	1,195*	53	44.4	506	19	37.5	681	34	49.9

<b>Postneonatal Mortality for Intermediate Low Birthweight (1500-2499 grams)</b>									
	Total			White			Black & Other		
Year	Number of Live Birth	Number of Infant Death	Rate	Number of Live Birth	Number of Infant Death	Rate	Number of Live Birth	Number of Infant Death	Rate
2003	4,429	28	6.3	2,231	15	6.7	2,198	13	5.9
2004	4,576*	23	5.0	2,313	13	5.6	2,258	10	4.4
2005	4,700*	41	8.7	2,376	20	8.4	2,310	21	9.1

<b>Postneonatal Mortality for Normal Birthweight (2500+ grams)</b>									
	Total			White			Black & Other		
Year	Number of Live Birth	Number of Infant Death	Rate	Number of Live Birth	Number of Infant Death	Rate	Number of Live Birth	Number of Infant Death	Rate
2003	49,870*	70	1.4	33,262	40	1.2	16,604	30	1.8
2004	50,765*	86	1.7	34,031	46	1.4	16,688	40	2.4
2005	51,622*	113	2.2	34,475	66	1.9	17,078	47	2.8

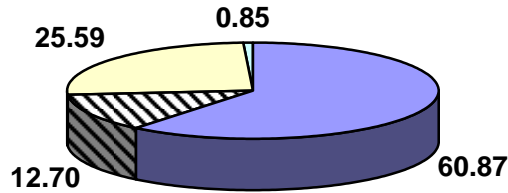
<sup>1</sup>Rates per 1,000 live births

<sup>2</sup>Race of mother

<sup>3</sup>Does not include missing birthweights

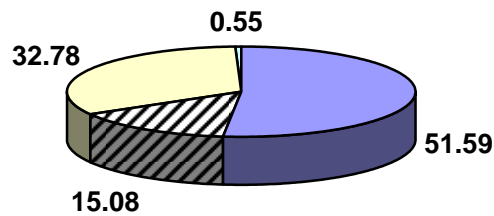
\*Includes unknown race

**Figure 1**  
**Percentage of Infant Deaths by Birthweight Group**  
**South Carolina, 2003-2005 Residence Data**



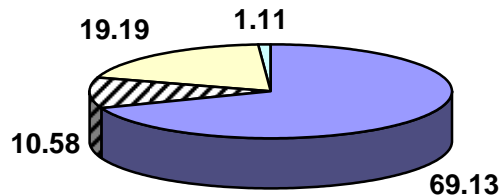
■ VLBW ■ ILBW ■ NBW ■ UNKNOWN

**Figure 1-A**  
**Percentage of White Infant Deaths by Birthweight Group**  
**South Carolina, 2003-2005 Residence Data**



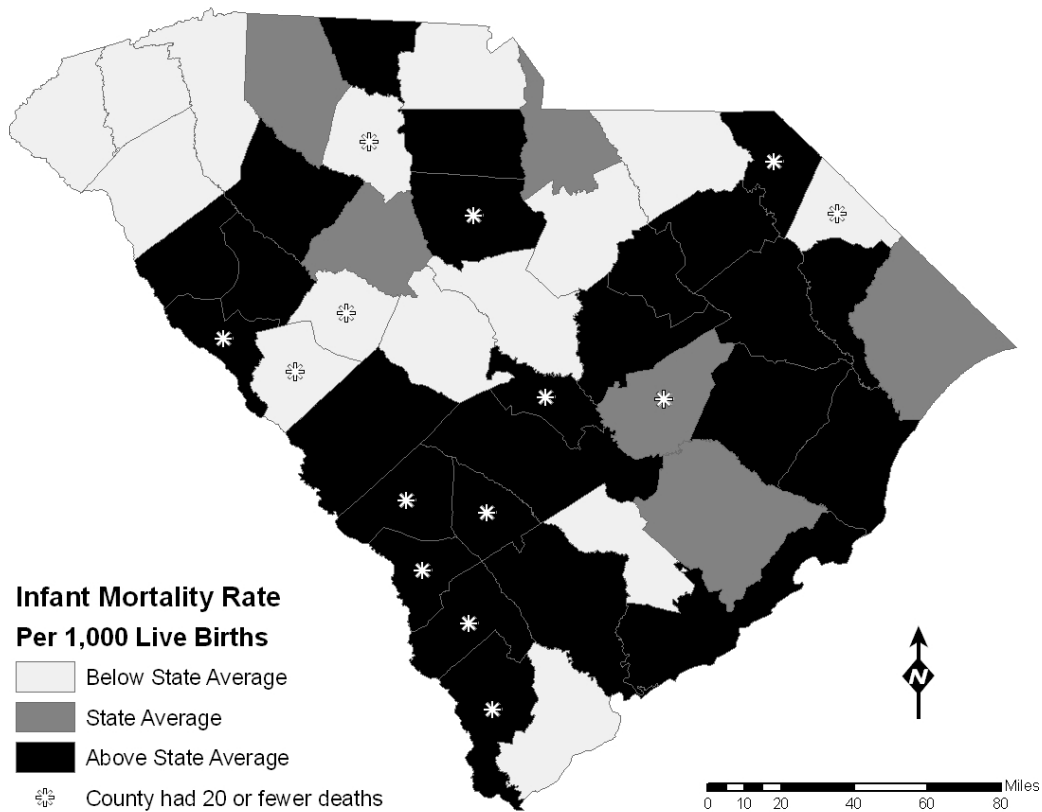
■ VLBW ■ ILBW ■ NBW ■ UNKNOWN

**Figure 1-B**  
**Percentage of Black and Other Infant Deaths by Birthweight Group**  
**South Carolina, 2003-2005 Residence Data**



■ VLBW ■ ILBW ■ NBW ■ UNKNOWN

**Figure 2.**  
**Five Year Infant Mortality Rates by County**  
**South Carolina**  
**2001-2005**  
**(Residence Data)**



NOTE: Counties with rates calculated with 20 or fewer deaths are unreliable and should be used cautiously.

**Above State Average** indicates a rate greater than 9.4.  
**State Average** indicates a rate between 8.7 and 9.4 inclusive.  
**Below State Average** indicates a rate lower than 8.7.