



Infant Mortality and Selected Birth Characteristics



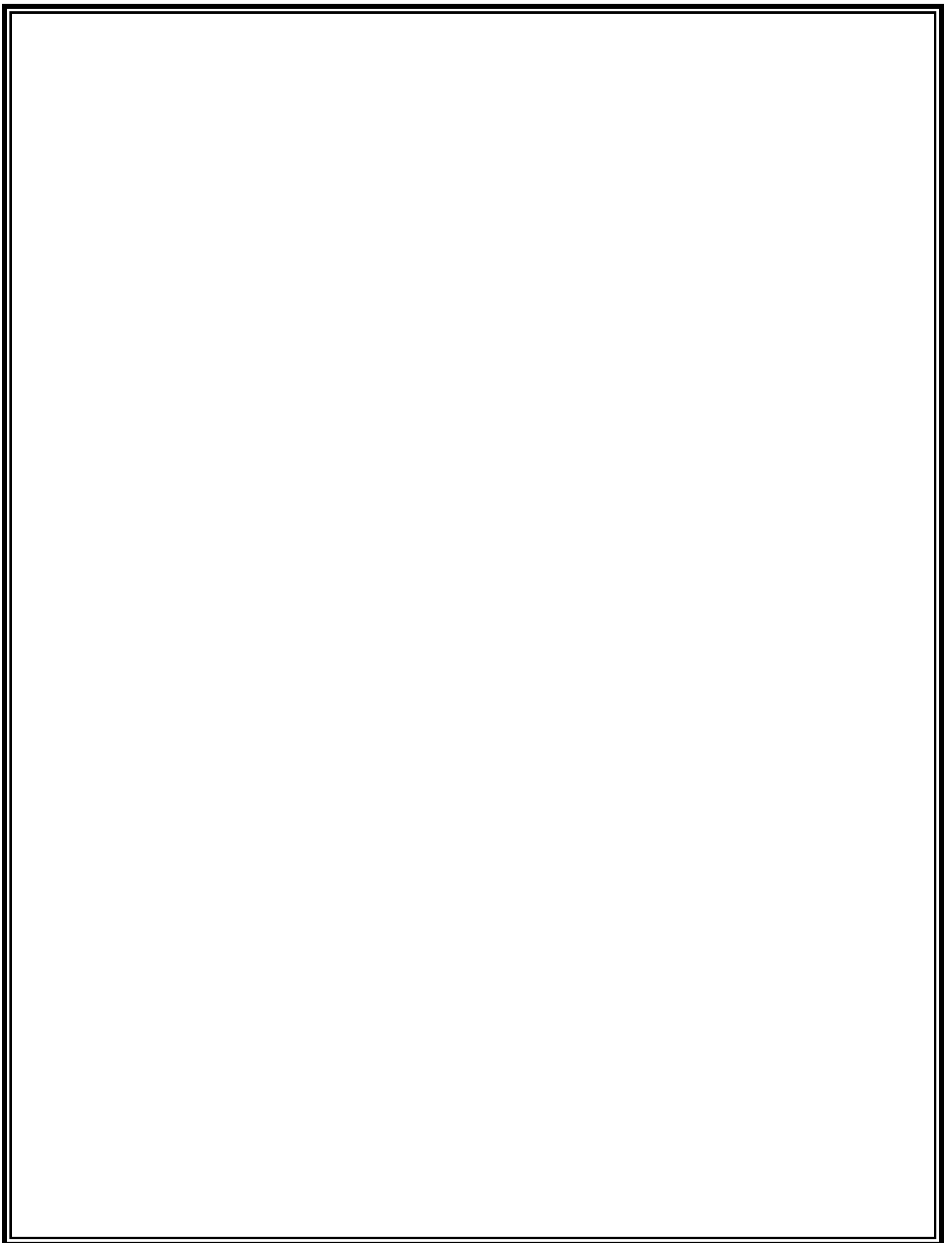
2008 South Carolina Residence Data

July 2010

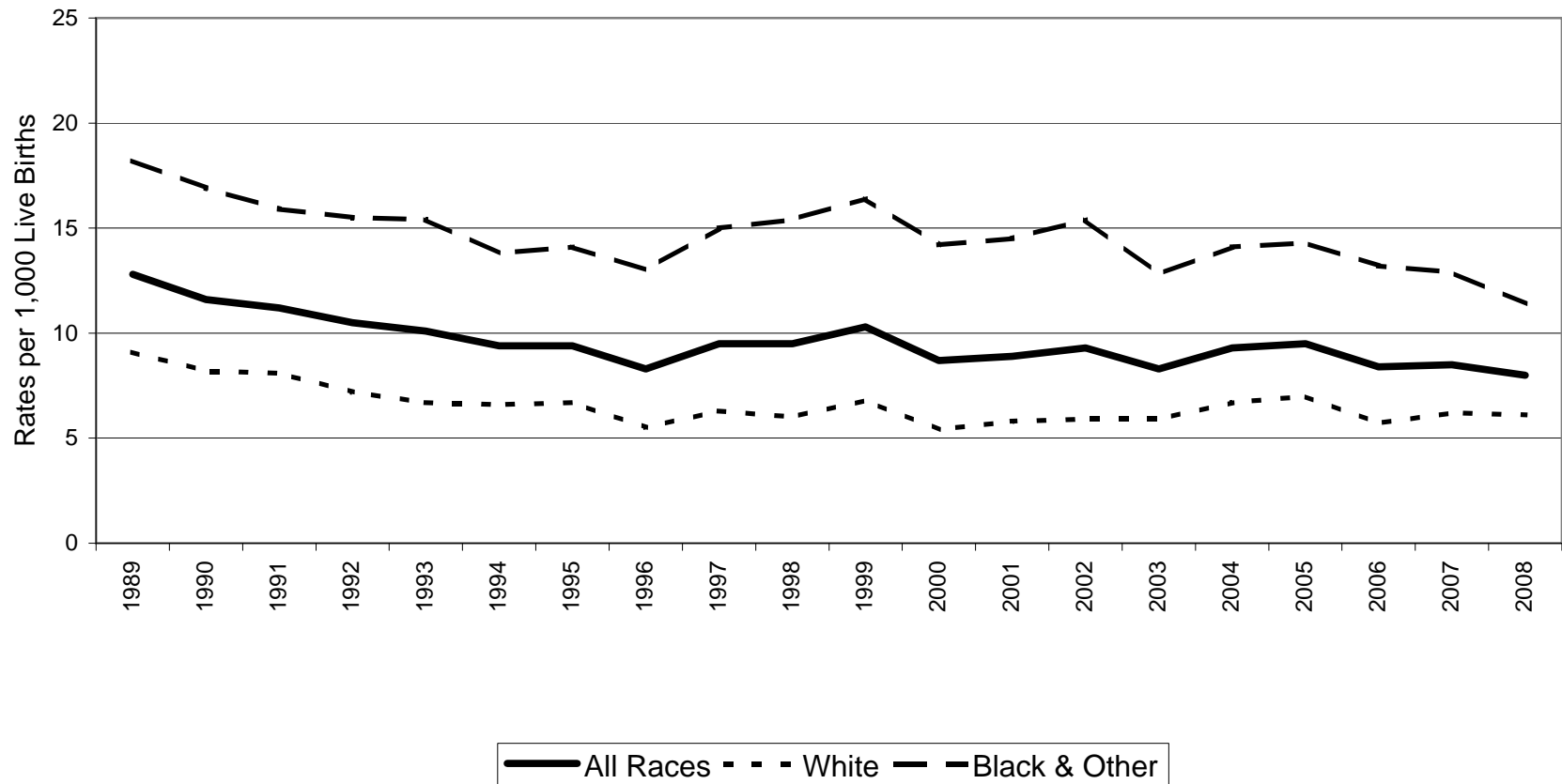
**South Carolina Department of Health and Environmental Control
Office of Public Health Statistics and Information Services
Division of Biostatistics
2600 Bull Street
Columbia, SC 29201**

**Phone: (803)898-3649
Fax: (803)898-3661**





South Carolina Infant Mortality Rates¹ by Race² Residence Data, 1989-2008



	1989	1990	1991	1992	1993	1994	1995	1996	1997	1998	1999	2000	2001	2002	2003	2004	2005	2006	2007	2008
All Races	12.8	11.6	11.2	10.5	10.1	9.4	9.4	8.3	9.5	9.5	10.3	8.7	8.9	9.3	8.3	9.3	9.5	8.4	8.5	8.0
White	9.1	8.2	8.1	7.2	6.7	6.6	6.7	5.5	6.3	6.0	6.8	5.4	5.8	5.9	5.9	6.7	7.0	5.7	6.2	6.1
Black & Other	18.2	16.9	15.9	15.5	15.4	13.8	14.1	13.0	15.0	15.4	16.4	14.2	14.5	15.4	12.8	14.1	14.3	13.2	12.9	11.4

¹Rates per 1,000 live births

²Race of infant (1989); Race of mother (1990-2008)

Table 1.
 Infant Mortality Rates¹ with 95% Confidence Intervals²
 South Carolina, 1989-2008
 (Residence Data)

Year	Number of Live Births	Number of Infant Deaths	Infant Mortality Rate	95% Confidence Intervals
1989	57,239	731	12.8	(11.9, 13.7)
1990	58,461	679	11.6	(10.7, 12.5)
1991	57,517	644	11.2	(10.3, 12.1)
1992	56,102	588	10.5	(9.7, 11.3)
1993	53,715	544	10.1	(9.3, 11.0)
1994	51,907	486	9.4	(8.5, 10.2)
1995	50,913	480	9.4	(8.6, 10.2)
1996	51,105	424	8.3	(7.5, 9.1)
1997	52,205	494	9.5	(8.7, 10.3)
1998	53,833	511	9.5	(8.7, 10.3)
1999	54,706	564	10.3	(9.4, 11.2)
2000	55,964	488	8.7	(7.9, 9.5)
2001	55,748	496	8.9	(8.1, 9.7)
2002	54,453	507	9.3	(8.5, 10.1)
2003	55,461	463	8.3	(7.5, 9.1)
2004	56,543	524	9.3	(8.5, 10.1)
2005	57,538	549	9.5	(8.7, 10.3)
2006	62,191	520	8.4	(7.6, 9.1)
2007	62,933	538	8.5	(7.8, 9.3)
2008	63,077	504	8.0	(7.3, 8.7)

Table 2.
 Infant Mortality Rates¹ with 95% Confidence Intervals²
 South Carolina
 1989-1993, 1994-1998, 1999-2003, 2004-2008
 (Residence Data)

Years	Number of Live Births	Number of Infant Deaths	Infant Mortality Rate	95% Confidence Intervals
1989-1993	283,034	3,186	11.3	(10.9, 11.6)
1994-1998	259,963	2,395	9.2	(8.8, 9.6)
1999-2003	276,332	2,518	9.1	(8.8, 9.5)
2004-2008	302,282	2,635	8.7	(8.4, 9.0)

¹Rates per 1,000 live births

² $r \pm 61.981 (r/n)^{1/2}$, where r = infant mortality rate and n = number of live births

Table 3.

Infant, Neonatal and Postneonatal Mortality and Mortality Rates¹ by Race²
 South Carolina
 2004, 2005, 2006, 2007 and 2008
 (Residence Data)

Infant Mortality									
	Total			White			Black & Other		
Year	Number of Live Birth	Number of Infant Death	Rate	Number of Live Birth	Number of Infant Death	Rate	Number of Live Birth	Number of Infant Death	Rate
2004	56,543*	524	9.3	36,872	247	6.7	19,616	277	14.1
2005	57,538*	549	9.5	37,367	262	7.0	20,080	287	14.3
2006	62,191*	520	8.4	39,950	227	5.7	22,127	293	13.2
2007	62,933*	538	8.5	40,641	250	6.2	22,259	288	12.9
2008	63,077*	504*	8.0	40,713	248	6.1	22,321	255	11.4

Neonatal Mortality (<28 days)									
	Total			White			Black & Other		
Year	Number of Live Birth	Number of Infant Death	Rate	Number of Live Birth	Number of Infant Death	Rate	Number of Live Birth	Number of Infant Death	Rate
2004	56,543*	363	6.4	36,872	169	4.6	19,616	194	9.9
2005	57,538*	341	5.9	37,367	157	4.2	20,080	184	9.2
2006	62,191*	342	5.5	39,950	138	3.5	22,127	204	9.2
2007	62,933*	357	5.7	40,641	165	4.1	22,259	192	8.6
2008	63,077*	311*	4.9	40,713	145	3.6	22,321	164	7.3

Postneonatal Mortality (28-364 days)									
	Total			White			Black & Other		
Year	Number of Live Birth	Number of Infant Death	Rate	Number of Live Birth	Number of Infant Death	Rate	Number of Live Birth	Number of Infant Death	Rate
2004	56,543*	161	2.9	36,872	78	2.1	19,616	83	4.2
2005	57,538*	208	3.6	37,367	105	2.8	20,080	103	5.1
2006	62,191*	178	2.9	39,950	89	2.2	22,127	89	4.0
2007	62,933*	181	2.9	40,641	85	2.1	22,259	96	4.3
2008	63,077*	194	3.1	40,713	103	2.5	22,321	91	4.1

¹Rates per 1,000 live births

²Race of mother

*Includes unknown race

Table 4.
Infant Mortality and Infant Mortality Rates¹
South Carolina and Each County, 2008, 2006-2008, 2003-2005
(Residence Data)

County of Residence	2008		2006-2008		2003-2005	
	Number	Rate	Number	Rate	Number	Rate
South Carolina	504	8.0	1,562	8.3	1,536	9.1
Abbeville	2	7.0	14	15.6	16	17.7
Aiken	12	6.1	46	7.5	69	12.5
Allendale	1	6.7	10	23.3	8	17.4
Anderson	19	7.8	53	7.2	62	9.3
Bamberg	2	10.9	4	6.7	6	10.9
Barnwell	1	3.0	8	8.1	14	14.3
Beaufort	11	4.7	47	6.7	45	6.9
Berkeley	22	8.1	63	8.2	59	9.1
Calhoun	2	10.4	5	9.5	5	10.0
Charleston	47	9.1	165	10.7	149	10.5
Cherokee	7	9.8	23	10.8	32	15.8
Chester	2	4.3	10	7.1	16	12.7
Chesterfield	7	11.8	20	11.1	16	10.1
Clarendon	2	5.1	8	6.5	10	8.2
Colleton	2	3.7	13	7.5	19	12.3
Darlington	9	10.6	23	8.9	36	13.9
Dillon	1	2.0	7	4.7	9	6.4
Dorchester	14	7.5	32	5.7	25	5.7
Edgefield	-	0	5	6.7	3	4.0
Fairfield	1	3.8	5	6.1	13	14.1
Florence	21	10.8	72	12.2	59	10.2
Georgetown	8	11.1	24	11.0	27	12.5
Greenville	49	7.3	129	6.6	113	6.6
Greenwood	8	8.0	32	10.7	39	15.0
Hampton	4	14.1	9	10.0	13	15.4
Horry	30	9.1	92	9.1	72	8.6
Jasper	6	15.4	10	8.4	10	10.0
Kershaw	5	5.8	20	7.9	9	4.2
Lancaster	7	7.1	20	7.0	21	9.0
Laurens	12	13.9	38	14.1	24	10.0
Lee	-	0	3	4.1	14	18.2
Lexington	24	6.9	71	6.9	54	5.7
McCormick	-	0	4	14.1	4	17.2
Marion	13	27.2	27	18.1	11	7.8
Marlboro	4	10.3	11	9.7	10	9.5
Newberry	3	5.6	10	6.2	9	6.0
Oconee	11	13.3	19	7.5	15	6.2
Orangeburg	24	17.3	73	17.5	43	11.1
Pickens	5	3.6	13	3.2	28	7.3
Richland	29	5.6	93	6.1	122	8.8
Saluda	4	15.4	7	8.4	4	5.5
Spartanburg	28	7.0	86	7.4	104	10.1
Sumter	14	8.3	36	7.1	46	9.3
Union	3	8.8	11	10.6	8	8.4
Williamsburg	5	10.9	24	17.3	14	9.9
York	23	7.5	67	7.5	51	6.8

¹Rates per 1,000 live births. Rates calculated with 20 or fewer deaths are unreliable and should be used cautiously.

Table 4-A.
White¹ Infant Mortality and Infant Mortality Rates²
South Carolina and Each County, 2008, 2006-2008, 2003-2005
(Residence Data)

County of Residence	2008		2006-2008		2003-2005	
	Number	Rate	Number	Rate	Number	Rate
South Carolina	248	6.1	725	6.0	723	6.6
Abbeville	-	0	4	6.8	4	6.7
Aiken	6	4.6	24	5.8	42	11.1
Allendale	-	0	1	13.5	1	11.0
Anderson	12	6.2	28	4.9	31	5.8
Bamberg	1	17.2	1	6.0	3	17.5
Barnwell	-	0	1	2.4	3	6.6
Beaufort	5	3.0	22	4.3	25	5.3
Berkeley	12	6.1	32	5.9	33	7.2
Calhoun	2	20.6	2	7.6	2	8.0
Charleston	20	6.4	66	7.1	62	7.2
Cherokee	3	6.0	14	9.1	19	12.6
Chester	1	4.2	4	5.6	8	11.8
Chesterfield	2	5.8	8	7.6	10	10.7
Clarendon	1	6.1	2	4.0	2	4.0
Colleton	1	3.4	5	5.5	7	8.7
Darlington	2	5.1	7	5.6	16	12.0
Dillon	-	0	2	3.0	2	3.1
Dorchester	7	5.3	15	3.8	16	5.2
Edgefield	-	0	1	2.5	2	4.8
Fairfield	-	0	1	4.2	1	3.5
Florence	7	7.8	21	7.4	18	6.1
Georgetown	1	2.6	9	7.6	12	9.7
Greenville	30	5.9	72	4.8	68	5.2
Greenwood	5	7.9	17	9.1	14	8.3
Hampton	-	0	1	2.9	3	9.3
Horry	23	8.8	73	9.2	41	6.3
Jasper	2	9.0	5	7.1	3	5.5
Kershaw	5	8.3	13	7.2	5	3.2
Lancaster	1	1.4	7	3.6	11	6.9
Laurens	9	15.1	21	11.3	12	7.1
Lee	-	0	-	0	2	10.2
Lexington	18	6.4	48	5.8	34	4.5
McCormick	-	0.0	2	22.5	-	0
Marion	3	17.9	7	14.0	1	2.1
Marlboro	-	0	4	9.2	4	10.1
Newberry	2	5.6	7	6.7	4	4.1
Oconee	11	14.6	18	7.9	14	6.3
Orangeburg	6	15.0	16	12.9	12	10.1
Pickens	5	4.0	13	3.5	21	6.0
Richland	3	1.4	18	2.8	35	5.8
Saluda	3	16.3	6	9.8	2	3.8
Spartanburg	15	5.1	46	5.4	68	8.8
Sumter	3	3.9	8	3.3	18	7.4
Union	2	9.2	9	13.6	6	9.7
Williamsburg	1	7.5	2	5.1	2	5.2
York	18	7.9	42	6.3	24	4.2

¹Race of mother

²Rates per 1,000 live births. Rates calculated with 20 or fewer deaths are unreliable and should be used cautiously.

Table 4-B.
Black and Other¹ Infant Mortality and Infant Mortality Rates²
South Carolina and Each County, 2008, 2006-2008, 2003-2005
(Residence Data)

County of Residence	2008		2006-2008		2003-2005	
	Number	Rate	Number	Rate	Number	Rate
South Carolina	255	11.4	836	12.5	813	13.7
Abbeville	2	20.2	10	32.5	12	39.0
Aiken	6	9.1	22	11.3	27	15.7
Allendale	1	8.5	9	25.4	7	19.0
Anderson	7	13.6	25	16.1	31	23.3
Bamberg	1	7.9	3	7.0	3	7.9
Barnwell	1	5.2	7	12.5	11	21.0
Beaufort	6	8.9	25	12.9	20	11.6
Berkeley	10	13.1	31	13.7	26	13.7
Calhoun	-	0	3	11.4	3	12.1
Charleston	27	13.1	99	16.1	87	15.5
Cherokee	4	18.7	9	15.3	13	25.1
Chester	1	4.4	6	8.6	8	13.7
Chesterfield	5	20.4	12	16.0	6	9.3
Clarendon	1	4.4	6	8.3	8	11.1
Colleton	1	4.0	8	9.8	12	16.1
Darlington	7	15.3	16	12.0	20	16.0
Dillon	1	3.5	5	5.9	7	9.1
Dorchester	7	12.5	17	10.2	9	7.0
Edgefield	-	0	4	11.8	1	3.0
Fairfield	1	5.3	4	6.8	12	19.0
Florence	14	13.4	51	16.6	41	14.6
Georgetown	7	20.5	15	15.1	15	16.3
Greenville	19	11.9	57	12.2	45	11.4
Greenwood	3	8.2	15	13.5	25	27.1
Hampton	4	22.3	8	14.3	10	19.2
Horry	7	10.4	19	9.0	31	16.6
Jasper	4	24.0	5	10.4	7	15.5
Kershaw	-	0	7	9.4	4	6.4
Lancaster	6	20.4	13	14.2	10	13.6
Laurens	3	11.3	17	20.4	12	16.9
Lee	-	0	3	5.4	12	21.0
Lexington	6	9.3	23	11.8	20	10.8
McCormick	-	0	2	10.3	4	26.0
Marion	10	32.3	20	20.1	10	10.7
Marlboro	4	16.2	7	10.0	6	9.1
Newberry	1	5.6	3	5.2	5	9.6
Oconee	-	0	1	4.2	1	4.7
Orangeburg	17	17.3	56	19.0	31	11.5
Pickens	-	0	-	0	7	21.7
Richland	26	8.7	75	8.5	87	11.3
Saluda	1	13.2	1	4.5	2	10.3
Spartanburg	13	12.1	40	12.6	36	14.0
Sumter	11	12.0	28	10.4	28	11.3
Union	1	8.1	2	5.3	2	6.0
Williamsburg	4	12.3	22	22.0	12	11.6
York	5	6.5	25	10.9	27	15.1

¹Race of mother

²Rates per 1,000 live births. Rates calculated with 20 or fewer deaths are unreliable and should be used cautiously.

Table 5.

Infant, Neonatal and Postneonatal Mortality Rates¹ by Race²
 and Percent Changes from 2007 to 2008
 South Carolina
 (Residence Data)

Infant Mortality			
Year	Total	White	Black & Other
2007	8.5	6.2	12.9
2008	8.0	6.1	11.4
Percent Change	-5.9%	-1.6%	-11.6%

Neonatal Mortality			
Year	Total	White	Black & Other
2007	5.7	4.1	8.6
2008	4.9	3.6	7.3
Percent Change	-14.0%	-12.2%	-15.1%

Postneonatal Mortality			
Year	Total	White	Black & Other
2007	2.9	2.1	4.3
2008	3.1	2.5	4.1
Percent Change	6.9%	19.0%	-4.7%

¹Rates per 1,000 live births

²Race of mother

Table 6.
Neonatal Mortality and Neonatal Mortality Rates¹
South Carolina and Each County, 2008, 2006-2008, 2003-2005
(Residence Data)

County of Residence	2008		2006-2008		2003-2005	
	Number	Rate	Number	Rate	Number	Rate
South Carolina	310	4.9	1,009	5.4	1,032	6.1
Abbeville	2	7.0	8	8.9	14	15.5
Aiken	9	4.6	31	5.1	47	8.5
Allendale	-	0	5	11.7	6	13.1
Anderson	10	4.1	32	4.4	48	7.2
Bamberg	1	5.4	3	5.0	4	7.3
Barnwell	1	3.0	7	7.1	10	10.2
Beaufort	8	3.4	36	5.1	30	4.6
Berkeley	15	5.5	39	5.1	38	5.8
Calhoun	2	10.4	5	9.5	4	8.0
Charleston	33	6.4	119	7.7	114	8.0
Cherokee	3	4.2	12	5.6	19	9.4
Chester	1	2.2	6	4.3	13	10.3
Chesterfield	5	8.4	16	8.9	13	8.2
Clarendon	1	2.6	5	4.1	7	5.7
Colleton	1	1.8	9	5.2	12	7.7
Darlington	8	9.4	15	5.8	23	8.9
Dillon	1	2.0	3	2.0	4	2.8
Dorchester	11	5.9	24	4.3	15	3.4
Edgefield	-	0	4	5.4	2	2.7
Fairfield	1	3.8	4	4.8	10	10.9
Florence	14	7.2	52	8.8	41	7.1
Georgetown	6	8.3	16	7.3	18	8.4
Greenville	36	5.4	89	4.6	76	4.4
Greenwood	6	6.0	21	7.0	33	12.7
Hampton	4	14.1	8	8.9	9	10.6
Horry	24	7.3	66	6.5	45	5.4
Jasper	3	7.7	7	5.9	3	3.0
Kershaw	2	2.3	14	5.5	4	1.8
Lancaster	4	4.1	12	4.2	9	3.9
Laurens	8	9.3	24	8.9	16	6.7
Lee	-	0	2	2.7	10	13.0
Lexington	9	2.6	41	4.0	30	3.2
McCormick	-	0	3	10.6	3	12.9
Marion	8	16.7	17	11.4	7	5.0
Marlboro	1	2.6	5	4.4	7	6.6
Newberry	-	0	4	2.5	6	4.0
Oconee	9	10.9	14	5.5	11	4.5
Orangeburg	15	10.8	49	11.7	29	7.5
Pickens	2	1.5	8	2.0	17	4.4
Richland	13	2.5	48	3.1	78	5.6
Saluda	1	3.8	3	3.6	3	4.1
Spartanburg	14	3.5	51	4.4	61	5.9
Sumter	6	3.5	17	3.3	27	5.5
Union	2	5.9	6	5.8	6	6.3
Williamsburg	2	4.4	13	9.4	10	7.0
York	8	2.6	36	4.0	40	5.3

¹Rates per 1,000 live births. Rates calculated with 20 or fewer deaths are unreliable and should be used cautiously.

Table 6-A.
White¹ Neonatal Mortality and Neonatal Mortality Rates²
South Carolina and Each County, 2008, 2006-2008, 2003-2005
(Residence Data)

County of Residence	2008		2006-2008		2003-2005	
	Number	Rate	Number	Rate	Number	Rate
South Carolina	145	3.6	448	3.7	466	4.2
Abbeville	-	0	2	3.4	2	3.4
Aiken	4	3.1	14	3.4	30	7.9
Allendale	-	0	1	13.5	1	11.0
Anderson	6	3.1	15	2.6	21	3.9
Bamberg	-	0	-	0	2	11.7
Barnwell	-	0	1	2.4	2	4.4
Beaufort	4	2.4	17	3.3	15	3.2
Berkeley	8	4.1	18	3.3	21	4.6
Calhoun	2	20.6	2	7.6	1	4.0
Charleston	15	4.8	45	4.8	44	5.1
Cherokee	1	2.0	7	4.5	11	7.3
Chester	-	0	2	2.8	7	10.3
Chesterfield	1	2.9	5	4.8	9	9.6
Clarendon	-	0	1	2.0	1	2.0
Colleton	1	3.4	5	5.5	3	3.7
Darlington	2	5.1	4	3.2	11	8.3
Dillon	-	0	2	3.0	1	1.6
Dorchester	5	3.8	11	2.8	7	2.3
Edgefield	-	0	-	0	1	2.4
Fairfield	-	0	1	4.2	1	3.5
Florence	4	4.5	13	4.6	14	4.8
Georgetown	-	0	5	4.2	8	6.5
Greenville	21	4.1	48	3.2	45	3.4
Greenwood	4	6.4	9	4.8	13	7.7
Hampton	-	0	-	0	2	6.2
Horry	19	7.3	54	6.8	24	3.7
Jasper	1	4.5	4	5.6	-	0
Kershaw	2	3.3	9	5.0	3	1.9
Lancaster	-	0	4	2.1	2	1.3
Laurens	5	8.4	15	8.1	5	3.0
Lee	-	0	-	0	1	5.1
Lexington	7	2.5	29	3.5	21	2.8
McCormick	-	0	1	11.2	-	0
Marion	2	11.9	3	6.0	1	2.1
Marlboro	-	0	2	4.6	3	7.6
Newberry	-	0	4	3.8	1	1.0
Oconee	9	12.0	14	6.1	10	4.5
Orangeburg	4	10.0	9	7.3	8	6.7
Pickens	2	1.6	8	2.1	13	3.7
Richland	1	0.5	9	1.4	27	4.4
Saluda	1	5.4	3	4.9	1	1.9
Spartanburg	6	2.0	24	2.8	39	5.0
Sumter	1	1.3	4	1.7	11	4.5
Union	1	4.6	4	6.0	4	6.5
Williamsburg	-	0	-	0	2	5.2
York	6	2.6	20	3.0	17	3.0

¹Race of mother

²Rates per 1,000 live births. Rates calculated with 20 or fewer deaths are unreliable and should be used cautiously.

Table 6-B.

Black and Other¹ Neonatal Mortality and Neonatal Mortality Rates²
 South Carolina and Each County, 2008, 2006-2008, 2003-2005
 (Residence Data)

County of Residence	2008		2006-2008		2003-2005	
	Number	Rate	Number	Rate	Number	Rate
South Carolina	164	7.3	560	8.4	566	9.6
Abbeville	2	20.2	6	19.5	12	39.0
Aiken	5	7.6	17	8.7	17	9.9
Allendale	-	0	4	11.3	5	13.6
Anderson	4	7.8	17	11.0	27	20.3
Bamberg	1	7.9	3	7.0	2	5.3
Barnwell	1	5.2	6	10.7	8	15.3
Beaufort	4	6.0	19	9.8	15	8.7
Berkeley	7	9.2	21	9.3	17	9.0
Calhoun	-	0	3	11.4	3	12.1
Charleston	18	8.8	74	12.0	70	12.5
Cherokee	2	9.3	5	8.5	8	15.5
Chester	1	4.4	4	5.7	6	10.3
Chesterfield	4	16.3	11	14.6	4	6.2
Clarendon	1	4.4	4	5.5	6	8.3
Colleton	-	0	4	4.9	9	12.1
Darlington	6	13.1	11	8.3	12	9.6
Dillon	1	3.5	1	1.2	3	3.9
Dorchester	6	10.7	13	7.8	8	6.3
Edgefield	-	0	4	11.8	1	3.0
Fairfield	1	5.3	3	5.1	9	14.2
Florence	10	9.6	39	12.7	27	9.6
Georgetown	6	17.6	11	11.1	10	10.9
Greenville	15	9.4	41	8.8	31	7.9
Greenwood	2	5.4	12	10.8	20	21.7
Hampton	4	22.3	8	14.3	7	13.4
Horry	5	7.4	12	5.7	21	11.2
Jasper	2	12.0	3	6.2	3	6.7
Kershaw	-	0	5	6.7	1	1.6
Lancaster	4	13.6	8	8.7	7	9.5
Laurens	3	11.3	9	10.8	11	15.5
Lee	-	0	2	3.6	9	15.8
Lexington	2	3.1	12	6.1	9	4.8
McCormick	-	0	2	10.3	3	19.5
Marion	6	19.4	14	14.1	6	6.4
Marlboro	1	4.0	3	4.3	4	6.1
Newberry	-	0	-	0	5	9.6
Oconee	-	0	-	0	1	4.7
Orangeburg	10	10.2	39	13.3	21	7.8
Pickens	-	0	-	0	4	12.4
Richland	12	4.0	39	4.4	51	6.6
Saluda	-	0	-	0	2	10.3
Spartanburg	8	7.4	27	8.5	22	8.6
Sumter	5	5.5	13	4.8	16	6.4
Union	1	8.1	2	5.3	2	6.0
Williamsburg	2	6.2	13	13.0	8	7.7
York	2	2.6	16	7.0	23	12.9

¹Race of mother

²Rates per 1,000 live births. Rates calculated with 20 or fewer deaths are unreliable and should be used cautiously.

Table 7.
Postneonatal Mortality and Postneonatal Mortality Rates¹
South Carolina and Each County, 2008, 2006-2008, 2003-2005
(Residence Data)

County of Residence	2008		2006-2008		2003-2005	
	Number	Rate	Number	Rate	Number	Rate
South Carolina	194	3.1	553	2.9	504	3.0
Abbeville	-	0	6	6.7	2	2.2
Aiken	3	1.5	15	2.4	22	4.0
Allendale	1	6.7	5	11.7	2	4.4
Anderson	9	3.7	21	2.9	14	2.1
Bamberg	1	5.4	1	1.7	2	3.6
Barnwell	-	0	1	1.0	4	4.1
Beaufort	3	1.3	11	1.6	15	2.3
Berkeley	7	2.6	24	3.1	21	3.2
Calhoun	-	0	-	0	1	2.0
Charleston	14	2.7	46	3.0	35	2.5
Cherokee	4	5.6	11	5.2	13	6.4
Chester	1	2.2	4	2.8	3	2.4
Chesterfield	2	3.4	4	2.2	3	1.9
Clarendon	1	2.6	3	2.4	3	2.5
Colleton	1	1.8	4	2.3	7	4.5
Darlington	1	1.2	8	3.1	13	5.0
Dillon	-	0	4	2.7	5	3.5
Dorchester	3	1.6	8	1.4	10	2.3
Edgefield	-	0	1	1.3	1	1.3
Fairfield	-	0	1	1.2	3	3.3
Florence	7	3.6	20	3.4	18	3.1
Georgetown	2	2.8	8	3.7	9	4.2
Greenville	13	1.9	40	2.0	37	2.2
Greenwood	2	2.0	11	3.7	6	2.3
Hampton	-	0	1	1.1	4	4.7
Horry	6	1.8	26	2.6	27	3.2
Jasper	3	7.7	3	2.5	7	7.0
Kershaw	3	3.5	6	2.4	5	2.3
Lancaster	3	3.0	8	2.8	12	5.2
Laurens	4	4.6	14	5.2	8	3.3
Lee	-	0	1	1.4	4	5.2
Lexington	15	4.3	30	2.9	24	2.5
McCormick	-	0	1	3.5	1	4.3
Marion	5	10.5	10	6.7	4	2.8
Marlboro	3	7.7	6	5.3	3	2.8
Newberry	3	5.6	6	3.7	3	2.0
Oconee	2	2.4	5	2.0	4	1.6
Orangeburg	9	6.5	24	5.7	14	3.6
Pickens	3	2.2	5	1.2	11	2.9
Richland	16	3.1	45	2.9	44	3.2
Saluda	3	11.5	4	4.8	1	1.4
Spartanburg	14	3.5	35	3.0	43	4.2
Sumter	8	4.7	19	3.7	19	3.9
Union	1	2.9	5	4.8	2	2.1
Williamsburg	3	6.5	11	7.9	4	2.8
York	15	4.9	31	3.4	11	1.5

¹Rates per 1,000 live births. Rates calculated with 20 or fewer deaths are unreliable and should be used cautiously.

Table 7-A.

White¹ Postneonatal Mortality and Postneonatal Mortality Rates²
 South Carolina and Each County, 2008, 2006-2008, 2003-2005
 (Residence Data)

County of Residence	2008		2006-2008		2003-2005	
	Number	Rate	Number	Rate	Number	Rate
South Carolina	103	2.5	277	2.3	257	2.3
Abbeville	-	0	2	3.4	2	3.4
Aiken	2	1.5	10	2.4	12	3.2
Allendale	-	0	-	0	-	0
Anderson	6	3.1	13	2.3	10	1.9
Bamberg	1	17.2	1	6.0	1	5.8
Barnwell	-	0	-	0	1	2.2
Beaufort	1	0.6	5	1.0	10	2.1
Berkeley	4	2.0	14	2.6	12	2.6
Calhoun	-	0	-	0	1	4.0
Charleston	5	1.6	21	2.3	18	2.1
Cherokee	2	4.0	7	4.5	8	5.3
Chester	1	4.2	2	2.8	1	1.5
Chesterfield	1	2.9	3	2.9	1	1.1
Clarendon	1	6.1	1	2.0	1	2.0
Colleton	-	0	-	0	4	5.0
Darlington	-	0	3	2.4	5	3.8
Dillon	-	0	-	0	1	1.6
Dorchester	2	1.5	4	1.0	9	2.9
Edgefield	-	0	1	2.5	1	2.4
Fairfield	-	0	-	0	-	0
Florence	3	3.3	8	2.8	4	1.4
Georgetown	1	2.6	4	3.4	4	3.2
Greenville	9	1.8	24	1.6	23	1.7
Greenwood	1	1.6	8	4.3	1	0.6
Hampton	-	0	1	2.9	1	3.1
Horry	4	1.5	19	2.4	17	2.6
Jasper	1	4.5	1	1.4	3	5.5
Kershaw	3	5.0	4	2.2	2	1.3
Lancaster	1	1.4	3	1.6	9	5.7
Laurens	4	6.7	6	3.2	7	4.2
Lee	-	0	-	0	1	5.1
Lexington	11	3.9	19	2.3	13	1.7
McCormick	-	0	1	11.2	-	0
Marion	1	6.0	4	8.0	-	0
Marlboro	-	0	2	4.6	1	2.5
Newberry	2	5.6	3	2.9	3	3.1
Oconee	2	2.7	4	1.7	4	1.8
Orangeburg	2	5.0	7	5.7	4	3.4
Pickens	3	2.4	5	1.3	8	2.3
Richland	2	0.9	9	1.4	8	1.3
Saluda	2	10.9	3	4.9	1	1.9
Spartanburg	9	3.1	22	2.6	29	3.8
Sumter	2	2.6	4	1.7	7	2.9
Union	1	4.6	5	7.6	2	3.2
Williamsburg	1	7.5	2	5.1	-	0
York	12	5.2	22	3.3	7	1.2

¹Race of mother²Rates per 1,000 live births. Rates calculated with 20 or fewer deaths are unreliable and should be used cautiously.

Table 7-B.

Black and Other¹ Postneonatal Mortality and Postneonatal Mortality Rates²
 South Carolina and Each County, 2008, 2006-2008, 2003-2005
 (Residence Data)

County of Residence	2008		2006-2008		2003-2005	
	Number	Rate	Number	Rate	Number	Rate
South Carolina	91	4.1	276	4.1	247	4.2
Abbeville	-	0	4	13.0	-	0
Aiken	1	1.5	5	2.6	10	5.8
Allendale	1	8.5	5	14.1	2	5.4
Anderson	3	5.8	8	5.2	4	3.0
Bamberg	-	0	-	0	1	2.6
Barnwell	-	0	1	1.8	3	5.7
Beaufort	2	3.0	6	3.1	5	2.9
Berkeley	3	3.9	10	4.4	9	4.8
Calhoun	-	0	-	0	-	0
Charleston	9	4.4	25	4.1	17	3.0
Cherokee	2	9.3	4	6.8	5	9.7
Chester	-	0	2	2.9	2	3.4
Chesterfield	1	4.1	1	1.3	2	3.1
Clarendon	-	0	2	2.8	2	2.8
Colleton	1	4.0	4	4.9	3	4.0
Darlington	1	2.2	5	3.8	8	6.4
Dillon	-	0	4	4.7	4	5.2
Dorchester	1	1.8	4	2.4	1	0.8
Edgefield	-	0	-	0	-	0
Fairfield	-	0	1	1.7	3	4.7
Florence	4	3.8	12	3.9	14	5.0
Georgetown	1	2.9	4	4.0	5	5.4
Greenville	4	2.5	16	3.4	14	3.6
Greenwood	1	2.7	3	2.7	5	5.4
Hampton	-	0	-	0	3	5.7
Horry	2	3.0	7	3.3	10	5.3
Jasper	2	12.0	2	4.1	4	8.9
Kershaw	-	0	2	2.7	3	4.8
Lancaster	2	6.8	5	5.5	3	4.1
Laurens	-	0	8	9.6	1	1.4
Lee	-	0	1	1.8	3	5.3
Lexington	4	6.2	11	5.6	11	5.9
McCormick	-	0	-	0	1	6.5
Marion	4	12.9	6	6.0	4	4.3
Marlboro	3	12.1	4	5.7	2	3.0
Newberry	1	5.6	3	5.2	-	0
Oconee	-	0	1	4.2	-	0
Orangeburg	7	7.1	17	5.8	10	3.7
Pickens	-	0	-	0	3	9.3
Richland	14	4.7	36	4.1	36	4.7
Saluda	1	13.2	1	4.5	-	0
Spartanburg	5	4.6	13	4.1	14	5.4
Sumter	6	6.6	15	5.6	12	4.8
Union	-	0	-	0	-	0
Williamsburg	2	6.2	9	9.0	4	3.9
York	3	3.9	9	3.9	4	2.2

¹Race of mother

²Rates per 1,000 live births. Rates calculated with 20 or fewer deaths are unreliable and should be used cautiously.

Table 8.
Leading Causes of Infant Death by Age at Death
South Carolina, 2008
(Residence Data)

Cause of Infant Death (ICD-10 Codes)	Total	Under 1 Day	1-6 Days	7-27 Days	Neonatal (<28 days)	Post-Neonatal (28-364 days)
Total Infant Deaths	504	203	48	59	310	194
Congenital malformations, deformations, etc. (Q00-Q99)	84	38	11	13	62	22
Disorders related to short gestation and low birthweight, NEC (P07)	69	62	5	1	68	1
Sudden infant death syndrome (R95)	57	-	-	6	6	51
Fetus and newborn affected by maternal complications of pregnancy (P01)	53	53	-	-	53	-
Accidents (V01-X59, Y85-Y86)	41	-	-	6	6	35
Diseases of circulatory system (I00-I99)	14	1	2	1	4	10
Bacterial sepsis of newborn (P36)	14	2	5	7	14	-
Newborn affected by complication of placenta, ect. (P02)	12	11	-	-	11	1
Respiratory distress of newborn (P22)	12	5	6	1	12	-
Neonatal hemorrhage (P50-P52, P54)	8	-	5	2	7	1
Necrotizing enterocolitis of newborn (P77)	8	-	1	5	6	2
All other causes	132	31	13	17	61	71

Table 8a.
 Leading Causes of White¹ Infant Death by Age at Death
 South Carolina, 2008
 (Residence Data)

Cause of Infant Death (ICD-10 Codes)	Total	Under 1 Day	1-6 Days	7-27 Days	Neonatal (<28 days)	Post-Neonatal (28-364 days)
Total White Infant Deaths	245	87	28	33	148	97
Congenital malformations, deformations, etc. (Q00-Q99)	53	24	9	10	43	10
Sudden infant death syndrome (R95)	32	-	-	4	4	28
Accidents (V01-X59, Y85-Y86)	25	-	-	4	4	21
Disorders related to short gestation and low birthweight, NEC (P07)	24	21	3	-	24	-
Fetus and newborn affected by maternal complications of pregnancy (P01)	17	17	-	-	17	-
Diseases of circulatory system (I00-I99)	7	-	1	1	2	5
Respiratory distress of newborn (P22)	7	3	3	1	7	-
Bacterial sepsis of newborn (P36)	7	2	3	2	7	-
Neonatal hemorrhage (P50-P52, P54)	5	-	4	1	5	-
Influenza and pneumonia (J10-J11)	4	-	-	-	-	4
All other causes	64	20	5	10	35	29

¹ Race of child

Table 8b.
Leading Causes of Black and Other¹ Infant Death by Age at Death
South Carolina, 2008
(Residence Data)

Cause of Infant Death (ICD-10 Codes)	Total	Under 1 Day	1-6 Days	7-27 Days	Neonatal (<28 days)	Post-Neonatal (28-364 days)
Total Black and Other Infant Deaths	258	115	20	26	161	97
Disorders related to short gestation and low birthweight, NEC (P07)	45	41	2	1	44	1
Fetus and newborn affected by maternal complications of pregnancy (P01)	36	36	-	-	36	-
Congenital malformations, deformations, etc. (Q00-Q99)	30	13	2	3	18	12
Sudden infant death syndrome (R95)	25	-	-	2	2	23
Accidents (V01-X59, Y85-Y86)	16	-	-	2	2	14
Newborn affected by complication of placenta, ect. (P02)	10	9	-	-	9	1
Bacterial sepsis of newborn (P36)	7	-	2	5	7	-
Diseases of circulatory system (I00-I99)	7	1	1	-	2	5
Necrotizing enterocolitis of newborn (P77)	7	-	1	4	5	2
Respiratory distress of newborn (P22)	5	2	3	-	5	-
Septicemia (A40-A41)	5	-	-	-	-	5
All other causes	65	13	9	9	31	34

¹ Race of child

Table 8c.
 Percent Changes of Leading Causes of Infant Death
 from 2007 to 2008, South Carolina

Cause of Infant Death Ranked by 2008 Data (ICD-10 Codes)	2007	2008	% Change
Total Infant Death	538	504	-6.3%
Congenital malformations, deformations, etc. (Q00-Q99)	85	84	-1.2%
Disorders related to short gestation and low birthweight, NEC (P07)	88	69	-21.6%
Sudden infant death syndrome (R95)	46	57	23.9%
Fetus and newborn affected by maternal complications of pregnancy (P01)	38	53	39.5%
Accidents (V01-X59, Y85-Y86)	43	41	-4.7%
Diseases of circulatory system (I00-I99)	10	14	40.0%
Bacterial sepsis of newborn (P36)	15	14	-6.7%
Newborn affected by complication of placenta, ect. (P02)	17	12	-29.4%
Respiratory distress of newborn (P22)	11	12	9.1%
Neonatal hemorrhage (P50-P52, P54)	7	8	14.3%
Necrotizing enterocolitis of newborn (P77)	10	8	-20.0%
All other causes	168	132	-21.4%

Table 9.

Comparison of Characteristics from Birth Files, by Race¹
 Z-tests for differences in proportions³
 South Carolina, 2007 to 2008
 (Residence Data)

	2007		2008		Z-TEST	P-VALUE
	Percent	Number	Percent	Number		

MOTHER < 18 YEARS						
TOTAL ²	4.23	2,664	4.16	2,627	-0.6046	0.5454
White	3.16	1,285	2.95	1,203	-1.7145	0.0864
Black & Other	6.19	1,378	6.38	1,424	0.8216	0.4113

MARITAL STATUS: UNMARRIED						
TOTAL ²	46.38	29,187	47.24	29,797	3.0633	0.0022
White	31.81	12,927	32.42	13,199	1.8688	0.0617
Black & Other	72.99	16,247	74.31	16,586	3.1537	0.0016

< 5 PRENATAL CARE VISITS						
TOTAL ²	6.42	4,038	6.15	3,882	-1.9158	0.0554
White	5.41	2,198	5.21	2,123	-1.2323	0.2178
Black & Other	8.25	1,837	7.87	1,757	-1.4787	0.1392

PRENATAL CARE BEGAN FIRST TRIMESTER						
TOTAL ²	68.58	43,159	68.98	43,513	1.5500	0.1212
White	72.12	29,309	72.57	29,545	1.4415	0.1494
Black & Other	62.15	13,834	62.48	13,946	0.7170	0.4734

VERY LOW BIRTHWEIGHT						
TOTAL ²	2.06	1,294	1.87	1,180	-2.3722	0.0177
White	1.31	532	1.25	508	-0.7777	0.4367
Black & Other	3.41	758	3.00	669	-2.4481	0.0144

LOW BIRTHWEIGHT						
TOTAL ²	10.17	6,401	9.89	6,238	-1.6640	0.0961
White	7.64	3,104	7.53	3,065	-0.5888	0.5560
Black & Other	14.77	3,287	14.19	3,167	-1.7360	0.0826

¹Race of mother

²Includes unknown races

³Proportions are expressed as percentages

Table 9. (continued)
 Comparison of Characteristics from Birth Files, by Race¹
 Z-tests for differences in proportions³
 South Carolina, 2007 to 2008
 (Residence Data)

	2007		2008		Z-TEST	P-VALUE
	Percent	Number	Percent	Number		

PREMATURE BIRTHS (< 37 WEEKS)						
TOTAL ²	12.21	7,682	11.78	7,428	-2.3524	0.0187
White	10.54	4,282	10.40	4,233	-0.6475	0.5173
Black & Other	15.23	3,390	14.29	3,190	-2.7927	0.0052

VERY PREMATURE BIRTHS (< 32 WEEKS)						
TOTAL ²	2.20	1,382	2.04	1,285	-1.9581	0.0502
White	1.45	589	1.44	588	-0.0599	0.9522
Black & Other	3.55	790	3.11	694	-2.5891	0.0096

PREMATURE 32-36 WEEKS BIRTHS						
TOTAL ²	10.01	6,300	9.74	6,143	-1.6168	0.1059
White	9.09	3,693	8.95	3,645	-0.6669	0.5048
Black & Other	11.68	2,600	11.18	2,496	-1.6535	0.0982

KOTELCHUCK INDEX: ADEQUATE, ADEQUATE PLUS						
TOTAL ²	70.98	44,671	71.63	45,185	2.5617	0.0104
White	73.07	29,698	74.29	30,244	3.9246	0.0001
Black & Other	67.19	14,956	66.82	14,916	-0.8214	0.4114

KOTELCHUCK INDEX: INTERMEDIATE						
TOTAL ²	7.78	4,896	7.24	4,565	-3.6540	0.0003
White	8.38	3,405	7.59	3,092	-4.1226	0.0000
Black & Other	6.69	1,489	6.59	1,470	-0.4398	0.6601

KOTELCHUCK INDEX: INADEQUATE						
TOTAL ²	20.46	12,877	20.29	12,799	-0.7507	0.4528
White	17.88	7,266	17.29	7,040	-2.1980	0.0280
Black & Other	25.19	5,606	25.79	5,756	1.4585	0.1447

HISPANIC MOTHER						
TOTAL ²	9.91	6,237	9.88	6,229	-0.2099	0.8337
White	14.59	5,931	14.74	6,002	0.5989	0.5492
Black & Other	1.37	306	1.02	227	-3.4748	0.0005

¹Race of mother

²Includes unknown races

³Proportions are expressed as percentages

Table 9-A.

Comparison of Characteristics of Infants who died, by Race¹
 Z-tests for differences in proportions³
 South Carolina, 2007 to 2008
 (Residence Data)

	2007		2008		Z-TEST	P-VALUE
	Percent	Number	Percent	Number		

MOTHER < 18 YEARS						
TOTAL ²	6.69	36	5.75	29	-0.6253	0.5318
White	5.20	13	6.45	16	0.5963	0.5509
Black & Other	7.99	23	5.10	13	-1.3500	0.1770

MARITAL STATUS: UNMARRIED						
TOTAL ²	58.18	313	63.49	320	1.7554	0.0792
White	41.60	104	46.37	115	1.0725	0.2835
Black & Other	72.57	209	80.39	205	2.1376	0.0325

< 5 PRENATAL CARE VISITS						
TOTAL ²	31.23	168	30.75	155	-0.1649	0.8690
White	27.60	69	21.77	54	-1.5073	0.1317
Black & Other	34.38	99	39.61	101	1.2617	0.2071

PRENATAL CARE BEGAN FIRST TRIMESTER						
TOTAL ²	56.32	303	57.34	289	0.3327	0.7394
White	55.20	138	60.08	149	1.1021	0.2704
Black & Other	57.29	165	54.51	139	-0.6517	0.5146

VERY LOW BIRTHWEIGHT						
TOTAL ²	58.18	313	56.75	286	-0.4674	0.6402
White	48.40	121	45.56	113	-0.6339	0.5261
Black & Other	66.67	192	67.45	172	0.1940	0.8461

LOW BIRTHWEIGHT						
TOTAL ²	71.75	386	70.63	356	-0.3963	0.6919
White	66.40	166	61.29	152	-1.1867	0.2353
Black & Other	76.39	220	79.61	203	0.9022	0.3669

¹Race of mother

²Includes unknown races

³Proportions are expressed as percentages

Table 9-A. (continued)

Comparison of Characteristics of Infants who died, by Race¹
 Z-tests for differences in proportions³
 South Carolina, 2007 to 2008
 (Residence Data)

	2007		2008		Z-TEST	P-VALUE
	Percent	Number	Percent	Number		

PREMATURE BIRTHS (< 37 WEEKS)						
TOTAL ²	71.38	384	70.83	357	-0.1930	0.8470
White	67.20	168	62.10	154	-1.1912	0.2336
Black & Other	75.00	216	79.22	202	1.1646	0.2442

VERY PREMATURE BIRTHS (< 32 WEEKS)						
TOTAL ²	57.06	307	55.36	279	-0.5548	0.5791
White	47.20	118	45.56	113	-0.3659	0.7144
Black & Other	65.63	189	64.71	165	-0.2244	0.8225

PREMATURE 32-36 WEEKS BIRTHS						
TOTAL ²	14.31	77	15.48	78	0.5276	0.5978
White	20.00	50	16.53	41	-1.0012	0.3167
Black & Other	9.38	27	14.51	37	1.8520	0.0640

KOTELCHUCK INDEX: ADEQUATE, ADEQUATE PLUS						
TOTAL ²	61.52	331	62.30	314	0.2582	0.7962
White	60.00	150	64.52	160	1.0395	0.2986
Black & Other	62.85	181	60.00	153	-0.6805	0.4962

KOTELCHUCK INDEX: INTERMEDIATE						
TOTAL ²	5.02	27	5.75	29	0.5260	0.5989
White	7.20	18	5.65	14	-0.7075	0.4793
Black & Other	3.13	9	5.88	15	1.5602	0.1187

KOTELCHUCK INDEX: INADEQUATE						
TOTAL ²	28.62	154	26.59	134	-0.7349	0.4624
White	28.40	71	23.79	59	-1.1711	0.2416
Black & Other	28.82	83	29.41	75	0.1517	0.8795

HISPANIC MOTHER						
TOTAL ²	6.13	33	7.34	37	0.7781	0.4365
White	12.40	31	14.52	36	0.6920	0.4890
Black & Other	0.69	2	0.39	1	-0.4743	0.6353

¹Race of mother

²Includes unknown races

³Proportions are expressed as percentages

Table 10.
 Infant Mortality Rates¹ by Race² and Birthweight³ Group
 South Carolina
 2006, 2007, and 2008
 (Residence Data)

Infant Mortality for Very Low Birthweight (0-1499 grams)									
	Total			White			Black & Other		
Year	Number of Live Birth	Number of Infant Death	Rate	Number of Live Birth	Number of Infant Death	Rate	Number of Live Birth	Number of Infant Death	Rate
2006	1,156*	283	244.8	458	90	196.5	697	193	276.9
2007	1,294*	313	241.9	532	121	227.4	758	192	253.3
2008	1,180*	286*	242.4	508	113	222.4	669	172	257.1

Infant Mortality for Intermediate Low Birthweight (1500-2499 grams)									
	Total			White			Black & Other		
Year	Number of Live Birth	Number of Infant Death	Rate	Number of Live Birth	Number of Infant Death	Rate	Number of Live Birth	Number of Infant Death	Rate
2006	5,156*	76	14.7	2,558	42	16.4	2,587	34	13.1
2007	5,107*	73	14.3	2,572	45	17.5	2,529	28	11.1
2008	5,058*	70	13.8	2,557	39	15.3	2,498	31	12.4

Infant Mortality for Normal Birthweight (2500+ grams)									
	Total			White			Black & Other		
Year	Number of Live Birth	Number of Infant Death	Rate	Number of Live Birth	Number of Infant Death	Rate	Number of Live Birth	Number of Infant Death	Rate
2006	55,860*	150	2.7	36,924	91	2.5	18,835	59	3.1
2007	56,513*	147	2.6	37,530	82	2.2	18,963	65	3.4
2008	56,796*	142	2.5	37,626	93	2.5	19,138	49	2.6

¹Rates per 1,000 live births

²Race of mother

³Does not include missing birthweights

*Includes unknown race

Table 10-A.
 Neonatal Mortality Rates¹ by Race² and Birthweight³ Group
 South Carolina
 2006, 2007, and 2008
 (Residence Data)

Neonatal Mortality for Very Low Birthweight (0-1499 grams)									
	Total			White			Black & Other		
Year	Number of Live Birth	Number of Infant Death	Rate	Number of Live Birth	Number of Infant Death	Rate	Number of Live Birth	Number of Infant Death	Rate
2006	1,156*	241	208.5	458	76	165.9	697	165	236.7
2007	1,294*	269	207.9	532	109	204.9	758	160	211.1
2008	1,180*	236*	200.0	508	97	190.9	669	138	206.3

Neonatal Mortality for Intermediate Low Birthweight (1500-2499 grams)									
	Total			White			Black & Other		
Year	Number of Live Birth	Number of Infant Death	Rate	Number of Live Birth	Number of Infant Death	Rate	Number of Live Birth	Number of Infant Death	Rate
2006	5,156*	45	8.7	2,558	26	10.2	2,587	19	7.3
2007	5,107*	41	8.0	2,572	25	9.7	2,529	16	6.3
2008	5,058*	35	6.9	2,557	21	8.2	2,498	14	5.6

Neonatal Mortality for Normal Birthweight (2500+ grams)									
	Total			White			Black & Other		
Year	Number of Live Birth	Number of Infant Death	Rate	Number of Live Birth	Number of Infant Death	Rate	Number of Live Birth	Number of Infant Death	Rate
2006	55,860*	50	0.9	36,924	34	0.9	18,835	16	0.8
2007	56,513*	44	0.8	37,530	31	0.8	18,963	13	0.7
2008	56,796*	37	0.7	37,626	26	0.7	19,138	11	0.6

¹Rates per 1,000 live births

²Race of mother

³Does not include missing birthweights

*Includes unknown race

Table 10-B.
 Postneonatal Mortality Rates¹ by Race² and Birthweight³ Group
 South Carolina
 2006, 2007, and 2008
 (Residence Data)

Postneonatal Mortality for Very Low Birthweight (0-1499 grams)									
	Total			White			Black & Other		
Year	Number of Live Birth	Number of Infant Death	Rate	Number of Live Birth	Number of Infant Death	Rate	Number of Live Birth	Number of Infant Death	Rate
2006	1,156*	42	36.3	458	14	30.6	697	28	40.2
2007	1,294*	44	34.0	532	12	22.6	758	32	42.2
2008	1,180*	50	42.4	508	16	31.5	669	34	50.8

Postneonatal Mortality for Intermediate Low Birthweight (1500-2499 grams)									
	Total			White			Black & Other		
Year	Number of Live Birth	Number of Infant Death	Rate	Number of Live Birth	Number of Infant Death	Rate	Number of Live Birth	Number of Infant Death	Rate
2006	5,156*	31	6.0	2,558	16	6.3	2,587	15	5.8
2007	5,107*	32	6.3	2,572	20	7.8	2,529	12	4.7
2008	5,058*	35	6.9	2,557	18	7.0	2,498	17	6.8

Postneonatal Mortality for Normal Birthweight (2500+ grams)									
	Total			White			Black & Other		
Year	Number of Live Birth	Number of Infant Death	Rate	Number of Live Birth	Number of Infant Death	Rate	Number of Live Birth	Number of Infant Death	Rate
2006	55,860*	100	1.8	36,924	57	1.5	18,835	43	2.3
2007	56,513*	103	1.8	37,530	51	1.4	18,963	52	2.7
2008	56,796*	105	1.8	37,626	67	1.8	19,138	38	2.0

¹Rates per 1,000 live births

²Race of mother

³Does not include missing birthweights

*Includes unknown race

Figure 1
Percentage of Infant Deaths by Birthweight Group
South Carolina, 2006-2008 Residence Data

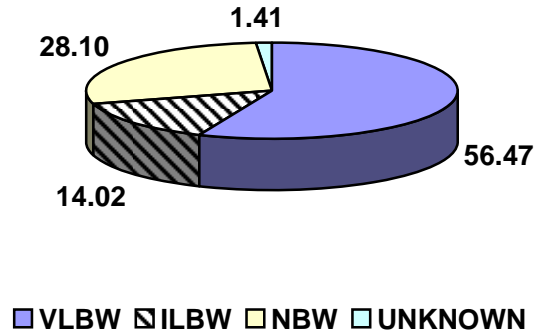


Figure 1-A
Percentage of White Infant Deaths by Birthweight Group
South Carolina, 2006-2008 Residence Data

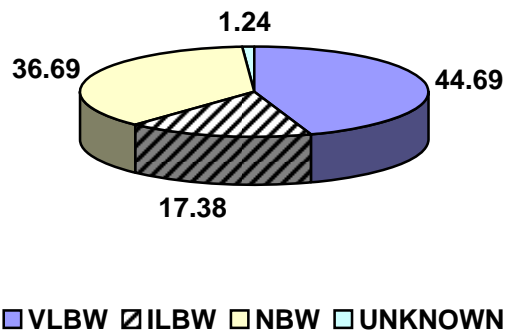


Figure 1-B
Percentage of Black and Other Infant Deaths by Birthweight Group
South Carolina, 2006-2008 Residence Data

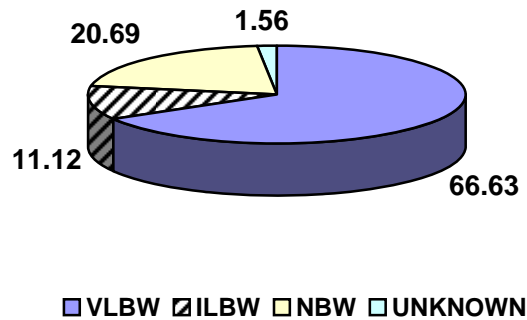


Figure 2.
Five Year Infant Mortality Rates by County
South Carolina
2004-2008
(Residence Data)

