



Infant Mortality and Selected Birth Characteristics



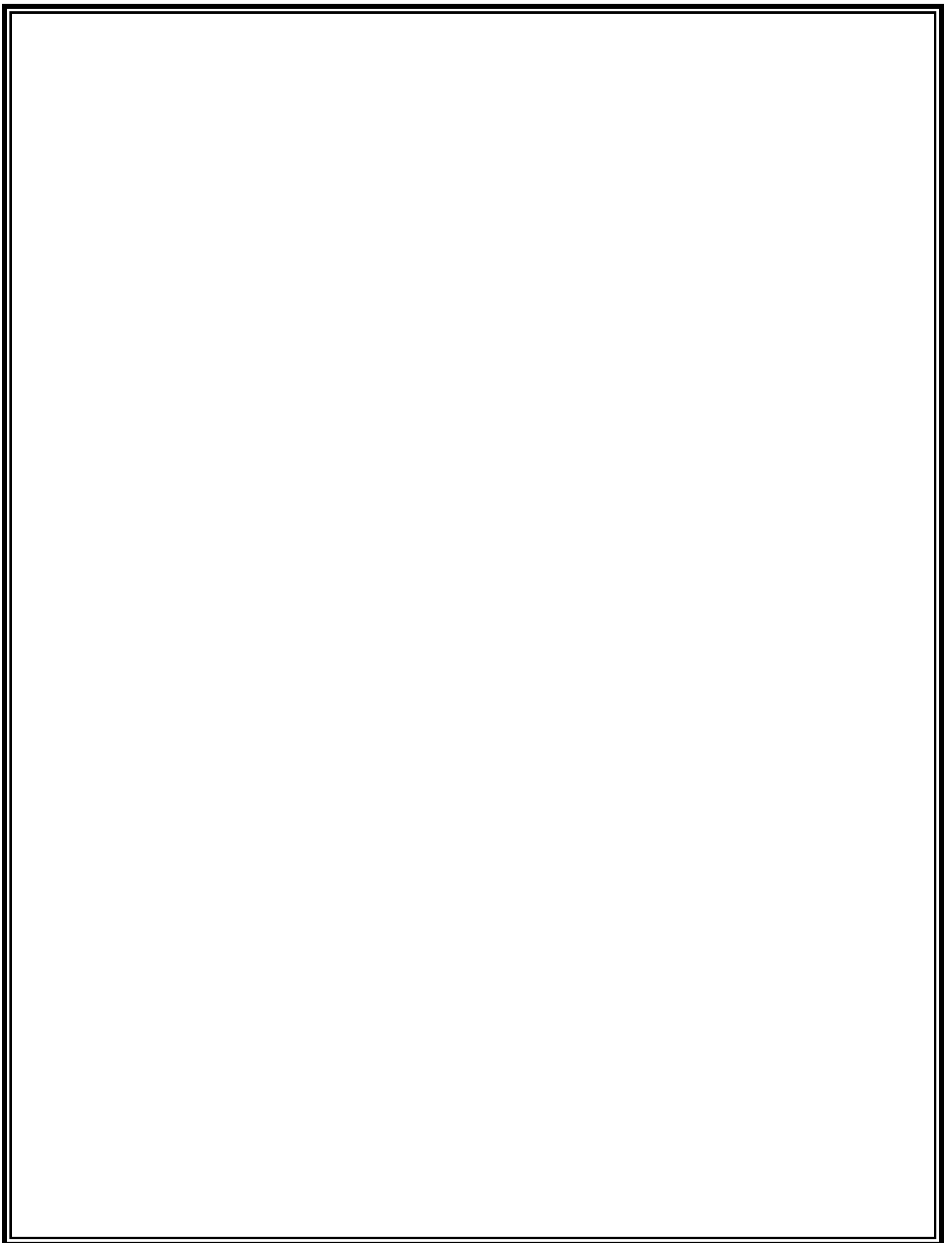
2010 South Carolina Residence Data

April 2012

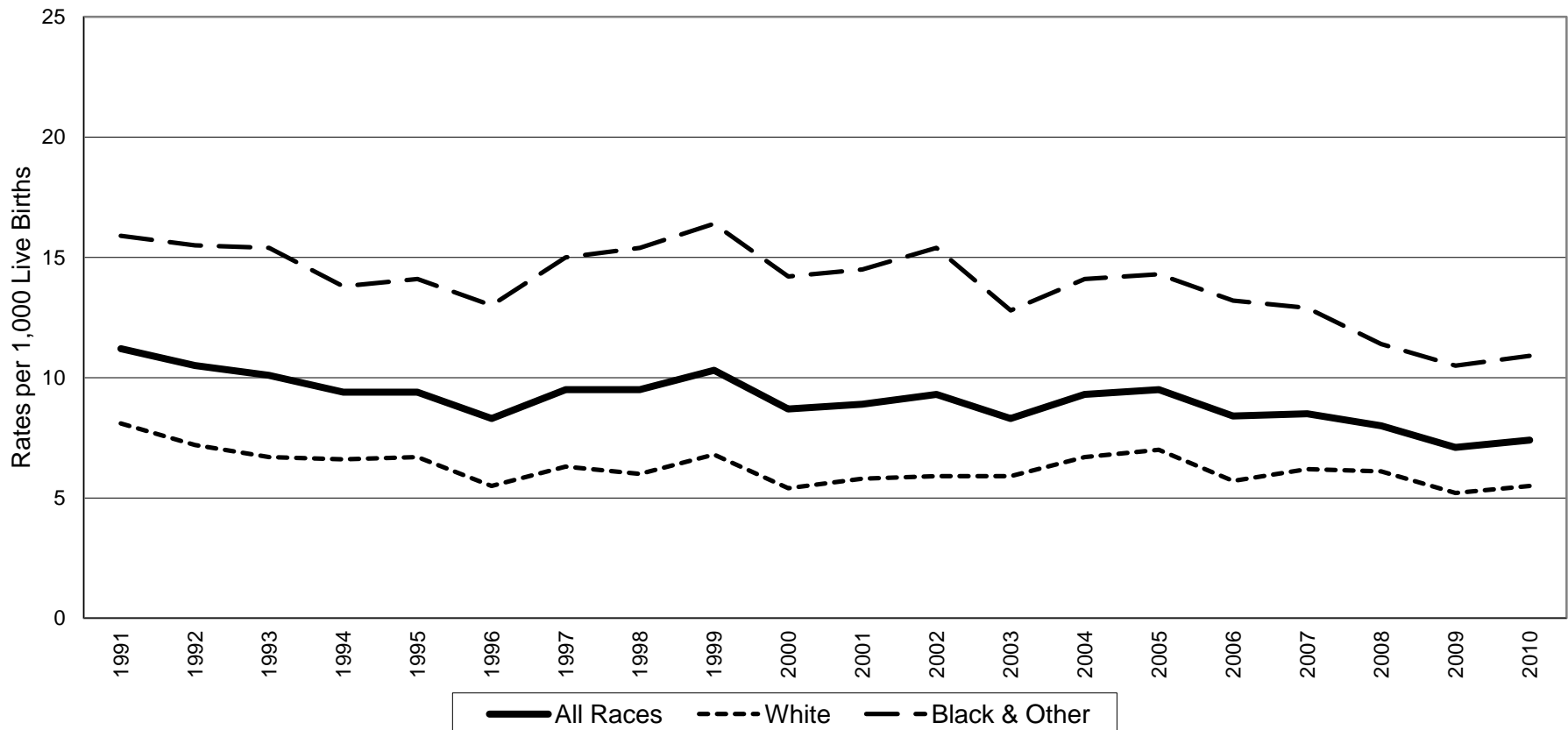
**South Carolina Department of Health and Environmental Control
Office of Public Health Statistics and Information Services
Division of Biostatistics
2600 Bull Street
Columbia, SC 29201**

**Phone: (803)898-3649
Fax: (803)898-3661**





South Carolina Infant Mortality Rates¹ by Race² Residence Data, 1991-2010



	1991	1992	1993	1994	1995	1996	1997	1998	1999	2000	2001	2002	2003	2004	2005	2006	2007	2008	2009	2010
All Races	11.2	10.5	10.1	9.4	9.4	8.3	9.5	9.5	10.3	8.7	8.9	9.3	8.3	9.3	9.5	8.4	8.5	8.0	7.1	7.4
White	8.1	7.2	6.7	6.6	6.7	5.5	6.3	6.0	6.8	5.4	5.8	5.9	5.9	6.7	7.0	5.7	6.2	6.1	5.2	5.5
Black & Other	15.9	15.5	15.4	13.8	14.1	13.0	15.0	15.4	16.4	14.2	14.5	15.4	12.8	14.1	14.3	13.2	12.9	11.4	10.5	10.9

¹Rates per 1,000 live births

²Race of mother

Table 1.
 Infant Mortality Rates¹ with 95% Confidence Intervals²
 South Carolina, 1991-2010
 (Residence Data)

Year	Number of Live Births	Number of Infant Deaths	Infant Mortality Rate	95% Confidence Intervals
1991	57,517	644	11.2	(10.3, 12.1)
1992	56,102	588	10.5	(9.7, 11.3)
1993	53,715	544	10.1	(9.3, 11.0)
1994	51,907	486	9.4	(8.5, 10.2)
1995	50,913	480	9.4	(8.6, 10.2)
1996	51,105	424	8.3	(7.5, 9.1)
1997	52,205	494	9.5	(8.7, 10.3)
1998	53,833	511	9.5	(8.7, 10.3)
1999	54,706	564	10.3	(9.4, 11.2)
2000	55,964	488	8.7	(7.9, 9.5)
2001	55,748	496	8.9	(8.1, 9.7)
2002	54,453	507	9.3	(8.5, 10.1)
2003	55,461	463	8.3	(7.5, 9.1)
2004	56,543	524	9.3	(8.5, 10.1)
2005	57,538	549	9.5	(8.7, 10.3)
2006	62,191	520	8.4	(7.6, 9.1)
2007	62,933	538	8.5	(7.8, 9.3)
2008	63,077	504	8.0	(7.3, 8.7)
2009	60,682	430	7.1	(6.4, 7.8)
2010	58,325	430	7.4	(6.7, 8.1)

Table 2.
 Infant Mortality Rates¹ with 95% Confidence Intervals²
 South Carolina
 1991-1995, 1996-2000, 2001-2005, 2006-2010
 (Residence Data)

Years	Number of Live Births	Number of Infant Deaths	Infant Mortality Rate	95% Confidence Intervals
1991-1995	270,154	2,742	10.1	(9.8, 10.5)
1996-2000	267,813	2,481	9.3	(8.9, 9.6)
2001-2005	279,743	2,539	9.1	(8.7, 9.4)
2006-2010	307,208	2,422	7.9	(7.6, 8.2)

¹Rates per 1,000 live births

² $r \pm 61.981 (r/n)^{1/2}$, where r = infant mortality rate and n = number of live births

Table 3.
 Infant, Neonatal and Postneonatal Mortality and Mortality Rates¹ by Race²
 South Carolina
 2006, 2007, 2008, 2009 and 2010
 (Residence Data)

Infant Mortality									
	Total			White			Black & Other		
Year	Number of Live Birth	Number of Infant Death	Rate	Number of Live Birth	Number of Infant Death	Rate	Number of Live Birth	Number of Infant Death	Rate
2006	62,191*	520	8.4	39,950	227	5.7	22,127	293	13.2
2007	62,933*	538	8.5	40,641	250	6.2	22,259	288	12.9
2008	63,077*	504*	8.0	40,713	248	6.1	22,321	255	11.4
2009	60,682*	430	7.1	39,348	206	5.2	21,284	224	10.5
2010	58,325*	430	7.4	37,927	208	5.5	20,361	222	10.9

Neonatal Mortality (<28 days)									
	Total			White			Black & Other		
Year	Number of Live Birth	Number of Infant Death	Rate	Number of Live Birth	Number of Infant Death	Rate	Number of Live Birth	Number of Infant Death	Rate
2006	62,191*	342	5.5	39,950	138	3.5	22,127	204	9.2
2007	62,933*	357	5.7	40,641	165	4.1	22,259	192	8.6
2008	63,077*	311*	4.9	40,713	145	3.6	22,321	164	7.3
2009	60,682*	260	4.3	39,348	121	3.1	21,284	139	6.5
2010	58,325*	266	4.6	37,927	124	3.3	20,361	142	7.0

Postneonatal Mortality (28-364 days)									
	Total			White			Black & Other		
Year	Number of Live Birth	Number of Infant Death	Rate	Number of Live Birth	Number of Infant Death	Rate	Number of Live Birth	Number of Infant Death	Rate
2006	62,191*	178	2.9	39,950	89	2.2	22,127	89	4.0
2007	62,933*	181	2.9	40,641	85	2.1	22,259	96	4.3
2008	63,077*	194	3.1	40,713	103	2.5	22,321	91	4.1
2009	60,682*	170	2.8	39,348	85	2.2	21,284	85	4.0
2010	58,325*	164	2.8	37,927	84	2.2	20,361	80	3.9

¹Rates per 1,000 live births

²Race of mother

*Includes unknown race

Table 4.
Infant Mortality and Infant Mortality Rates¹
South Carolina and Each County, 2010, 2008-2010, 2005-2007
(Residence Data)

County of Residence	2010		2008-2010		2005-2007	
	Number	Rate	Number	Rate	Number	Rate
South Carolina	430	7.4	1,364	7.5	1,607	8.8
Abbeville	5	19.9	10	12.3	16	18.2
Aiken	13	6.5	36	6.1	64	10.7
Allendale	1	7.9	3	7.8	11	25.8
Anderson	15	6.7	51	7.3	53	7.4
Bamberg	3	16.8	5	9.1	2	3.3
Barnwell	2	7.1	4	4.4	13	13.5
Beaufort	8	3.7	26	3.9	48	6.9
Berkeley	17	6.8	49	6.3	62	8.7
Calhoun	-	0	3	6.0	4	8.0
Charleston	31	6.4	105	7.0	176	11.7
Cherokee	7	10.0	19	9.0	29	13.9
Chester	-	0	6	4.7	14	10.2
Chesterfield	8	15.2	28	16.8	17	9.7
Clarendon	2	5.4	4	3.5	9	7.3
Colleton	2	4.2	11	7.2	16	9.2
Darlington	12	14.9	31	12.5	29	11.2
Dillon	3	6.5	5	3.5	11	7.6
Dorchester	7	3.8	28	5.0	23	4.4
Edgefield	-	0	2	3.0	7	9.6
Fairfield	3	12.7	5	6.7	5	5.7
Florence	19	10.6	62	11.0	74	12.5
Georgetown	6	9.9	21	10.4	27	12.5
Greenville	36	5.9	132	6.9	124	6.6
Greenwood	6	6.5	27	9.4	38	13.1
Hampton	1	3.8	6	7.2	6	6.6
Horry	23	7.5	81	8.5	86	8.9
Jasper	1	3.0	9	8.2	11	9.3
Kershaw	5	6.6	12	5.0	19	7.8
Lancaster	10	11.4	22	8.0	21	8.0
Laurens	5	6.0	21	8.2	35	13.4
Lee	3	15.6	5	7.6	10	13.3
Lexington	17	5.0	61	5.9	66	6.6
McCormick	1	13.3	2	8.1	5	18.7
Marion	9	20.9	31	22.3	16	11.0
Marlboro	2	6.6	10	9.9	11	9.9
Newberry	2	4.4	7	4.6	10	6.2
Oconee	3	3.7	18	7.3	12	4.8
Orangeburg	21	16.9	52	13.1	68	16.4
Pickens	15	12.8	26	7.0	18	4.5
Richland	30	6.2	89	5.9	112	7.5
Saluda	3	12.0	11	14.3	4	4.8
Spartanburg	26	7.1	92	7.9	87	7.8
Sumter	14	9.1	42	8.7	40	7.9
Union	1	3.1	8	7.8	9	8.8
Williamsburg	4	10.8	14	11.3	24	17.4
York	27	9.1	71	7.9	65	7.5

¹Rates per 1,000 live births. Rates calculated with 20 or fewer deaths are unreliable and should be used cautiously.

Table 4-A.
White¹ Infant Mortality and Infant Mortality Rates²
South Carolina and Each County, 2010, 2008-2010, 2005-2007
(Residence Data)

County of Residence	2010		2008-2010		2005-2007	
	Number	Rate	Number	Rate	Number	Rate
South Carolina	208	5.5	662	5.6	739	6.3
Abbeville	1	6.2	2	3.8	5	8.5
Aiken	7	5.2	16	4.0	35	8.5
Allendale	-	0	-	0	2	28.6
Anderson	10	5.7	31	5.6	27	4.8
Bamberg	-	0	1	5.7	-	0
Barnwell	-	0	1	2.4	2	4.7
Beaufort	6	3.8	14	2.9	24	4.8
Berkeley	12	6.6	31	5.5	29	5.8
Calhoun	-	0	3	11.7	-	0
Charleston	12	3.9	44	4.8	76	8.4
Cherokee	6	11.2	13	8.4	17	11.1
Chester	-	0	4	6.0	6	8.5
Chesterfield	5	15.5	14	14.2	9	8.8
Clarendon	1	7.1	2	4.2	2	4.1
Colleton	1	3.9	4	4.8	6	6.6
Darlington	7	17.8	13	10.7	12	9.2
Dillon	-	0	1	1.7	4	6.1
Dorchester	5	3.8	17	4.4	10	2.7
Edgefield	-	0	-	0	3	7.5
Fairfield	2	29.4	3	13.5	1	3.8
Florence	8	9.3	19	7.2	19	6.5
Georgetown	1	3.1	3	2.8	13	10.7
Greenville	22	4.8	70	4.8	66	4.6
Greenwood	3	5.3	14	7.8	16	8.8
Hampton	-	0	-	0	1	2.9
Horry	11	4.5	53	7.0	66	8.7
Jasper	-	0	3	4.8	6	8.5
Kershaw	5	9.3	11	6.6	10	5.8
Lancaster	7	11.5	10	5.2	10	5.7
Laurens	2	3.6	15	8.6	19	10.5
Lee	1	21.3	1	6.4	1	5.5
Lexington	8	2.9	39	4.7	38	4.7
McCormick	-	0	-	0	2	23.0
Marion	3	22.2	7	15.5	4	8.5
Marlboro	-	0	3	8.6	5	12.0
Newberry	1	3.7	5	5.2	6	5.9
Oconee	3	4.0	18	8.0	11	4.9
Orangeburg	1	2.7	8	6.9	14	11.2
Pickens	12	11.4	23	6.8	15	4.1
Richland	7	3.4	17	2.6	33	5.2
Saluda	1	5.4	6	10.8	4	6.5
Spartanburg	17	6.3	56	6.6	53	6.5
Sumter	3	4.2	14	6.2	13	5.3
Union	1	5.0	5	7.7	8	12.2
Williamsburg	-	0	1	3.0	2	5.4
York	15	6.9	46	6.9	34	5.3

¹Race of mother

²Rates per 1,000 live births. Rates calculated with 20 or fewer deaths are unreliable and should be used cautiously.

Table 4-B.
Black and Other¹ Infant Mortality and Infant Mortality Rates²
South Carolina and Each County, 2010, 2008-2010, 2005-2007
(Residence Data)

County of Residence	2010		2008-2010		2005-2007	
	Number	Rate	Number	Rate	Number	Rate
South Carolina	222	10.9	701	11.0	868	13.5
Abbeville	4	44.4	8	28.5	11	37.3
Aiken	6	9.3	20	10.2	29	15.6
Allendale	1	8.9	3	9.5	9	25.2
Anderson	5	10.3	20	13.5	26	17.7
Bamberg	3	23.6	4	10.7	2	4.6
Barnwell	2	13.1	3	6.1	11	20.6
Beaufort	2	3.5	12	6.5	24	12.8
Berkeley	5	7.3	18	8.3	33	15.3
Calhoun	-	0	-	0	4	15.6
Charleston	19	10.5	61	10.5	100	16.7
Cherokee	1	6.1	6	10.5	12	21.7
Chester	-	0	2	3.3	8	12.0
Chesterfield	3	14.7	14	20.7	8	11.0
Clarendon	1	4.4	2	3.0	7	9.7
Colleton	1	4.7	7	9.9	10	12.2
Darlington	5	12.0	18	14.2	17	13.3
Dillon	3	11.2	4	4.8	7	8.8
Dorchester	2	3.9	11	6.5	13	8.3
Edgefield	-	0	2	6.0	4	12.1
Fairfield	1	5.9	2	3.8	4	6.5
Florence	11	11.8	43	14.5	55	18.2
Georgetown	5	17.8	18	19.2	14	14.8
Greenville	14	9.4	62	13.6	58	13.2
Greenwood	3	8.3	13	12.0	22	20.5
Hampton	1	7.7	6	12.7	5	8.9
Horry	12	19.3	28	14.6	20	9.6
Jasper	1	6.8	6	12.6	5	10.6
Kershaw	-	0	1	1.4	9	12.7
Lancaster	3	11.3	12	14.3	11	12.4
Laurens	3	10.8	6	7.4	16	20.0
Lee	2	13.9	4	8.1	9	15.8
Lexington	9	13.4	22	10.9	28	14.7
McCormick	1	21.3	2	12.2	3	16.7
Marion	6	20.3	24	25.7	12	12.2
Marlboro	2	10.0	7	10.5	6	8.7
Newberry	1	5.4	2	3.6	4	6.9
Oconee	-	0	-	0	1	4
Orangeburg	20	22.9	43	15.4	54	18.7
Pickens	3	24.4	3	8.4	3	9.1
Richland	23	8.2	72	8.4	79	9.3
Saluda	2	31.3	5	23.6	-	0
Spartanburg	9	9.2	36	11.4	34	11.5
Sumter	11	13.4	28	10.9	27	10.4
Union	-	0	3	8.1	1	2.8
Williamsburg	4	15.2	13	14.4	22	21.7
York	12	15.2	25	10.8	31	14.2

¹Race of mother

²Rates per 1,000 live births. Rates calculated with 20 or fewer deaths are unreliable and should be used cautiously.

Table 5.

Infant, Neonatal and Postneonatal Mortality Rates¹ by Race²
 and Percent Changes from 2009 to 2010
 South Carolina
 (Residence Data)

Infant Mortality			
Year	Total	White	Black & Other
2009	7.1	5.2	10.5
2010	7.4	5.5	10.9
Percent Change	4.2%	5.8%	3.8%

Neonatal Mortality			
Year	Total	White	Black & Other
2009	4.3	3.1	6.5
2010	4.6	3.3	7.0
Percent Change	7.0%	6.5%	7.7%

Postneonatal Mortality			
Year	Total	White	Black & Other
2009	2.8	2.2	4.0
2010	2.8	2.2	3.9
Percent Change	0.0%	0.0%	-2.5%

¹Rates per 1,000 live births

²Race of mother

Table 6.
Neonatal Mortality and Neonatal Mortality Rates¹
South Carolina and Each County, 2010, 2008-2010, 2005-2007
(Residence Data)

County of Residence	2010		2008-2010		2005-2007	
	Number	Rate	Number	Rate	Number	Rate
South Carolina	266	4.6	836	4.6	1,040	5.7
Abbeville	4	15.9	7	8.6	9	10.2
Aiken	5	2.5	19	3.2	39	6.5
Allendale	1	7.9	1	2.6	6	14.1
Anderson	13	5.8	36	5.1	35	4.9
Bamberg	2	11.2	3	5.5	2	3.3
Barnwell	1	3.5	3	3.3	10	10.4
Beaufort	6	2.8	19	2.8	35	5.0
Berkeley	9	3.6	30	3.9	40	5.6
Calhoun	-	0	2	4.0	4	8.0
Charleston	15	3.1	60	4.0	127	8.4
Cherokee	4	5.7	9	4.3	16	7.7
Chester	-	0	3	2.4	10	7.3
Chesterfield	6	11.4	21	12.6	14	8.0
Clarendon	2	5.4	3	2.6	5	4.1
Colleton	1	2.1	5	3.3	9	5.2
Darlington	8	9.9	20	8.1	16	6.2
Dillon	1	2.2	2	1.4	5	3.4
Dorchester	3	1.6	17	3.0	18	3.4
Edgefield	-	0	2	3.0	5	6.8
Fairfield	2	8.4	4	5.3	3	3.4
Florence	14	7.8	39	6.9	52	8.8
Georgetown	5	8.3	15	7.4	17	7.9
Greenville	21	3.4	86	4.5	80	4.3
Greenwood	4	4.3	19	6.6	26	9.0
Hampton	1	3.8	6	7.2	5	5.5
Horry	14	4.6	59	6.2	56	5.8
Jasper	-	0	5	4.6	6	5.1
Kershaw	3	4.0	6	2.5	14	5.7
Lancaster	7	8.0	15	5.4	14	5.3
Laurens	4	4.8	13	5.1	19	7.3
Lee	1	5.2	2	3.1	7	9.3
Lexington	9	2.6	27	2.6	40	4.0
McCormick	1	13.3	2	8.1	4	15.0
Marion	7	16.2	22	15.9	9	6.2
Marlboro	2	6.6	7	6.9	6	5.4
Newberry	1	2.2	2	1.3	6	3.7
Oconee	1	1.2	12	4.8	8	3.2
Orangeburg	12	9.7	32	8.1	47	11.3
Pickens	8	6.8	15	4.0	11	2.7
Richland	20	4.1	51	3.4	69	4.6
Saluda	3	12.0	6	7.8	3	3.6
Spartanburg	16	4.3	55	4.7	52	4.7
Sumter	9	5.9	24	5.0	19	3.8
Union	-	0	3	2.9	4	3.9
Williamsburg	2	5.4	8	6.5	14	10.1
York	17	5.8	38	4.2	44	5.1

¹Rates per 1,000 live births. Rates calculated with 20 or fewer deaths are unreliable and should be used cautiously.

Table 6-A.
White¹ Neonatal Mortality and Neonatal Mortality Rates²
South Carolina and Each County, 2010, 2008-2010, 2005-2007
(Residence Data)

County of Residence	2010		2008-2010		2005-2007	
	Number	Rate	Number	Rate	Number	Rate
South Carolina	124	3.3	390	3.3	460	3.9
Abbeville	1	6.2	1	1.9	2	3.4
Aiken	2	1.5	7	1.8	18	4.4
Allendale	-	0	-	0	2	28.6
Anderson	9	5.1	21	3.8	17	3.0
Bamberg	-	0	-	0	-	0
Barnwell	-	0	1	2.4	2	4.7
Beaufort	4	2.5	10	2.1	17	3.4
Berkeley	7	3.8	19	3.4	16	3.2
Calhoun	-	0	2	7.8	-	0
Charleston	6	2.0	25	2.7	49	5.4
Cherokee	3	5.6	5	3.2	8	5.2
Chester	-	0	1	1.5	5	7.1
Chesterfield	3	9.3	9	9.1	6	5.9
Clarendon	1	7.1	1	2.1	1	2.0
Colleton	-	0	2	2.4	4	4.4
Darlington	4	10.2	7	5.8	7	5.4
Dillon	-	0	-	0	3	4.6
Dorchester	3	2.3	10	2.6	8	2.2
Edgefield	-	0	-	0	1	2.5
Fairfield	1	14.7	2	9.0	1	3.8
Florence	7	8.1	12	4.5	14	4.8
Georgetown	1	3.1	2	1.9	8	6.6
Greenville	14	3.0	47	3.2	42	2.9
Greenwood	3	5.3	11	6.2	8	4.4
Hampton	-	0	-	0	-	0
Horry	6	2.5	39	5.1	45	5.9
Jasper	-	0	2	3.2	3	4.3
Kershaw	3	5.6	5	3.0	9	5.2
Lancaster	5	8.2	7	3.6	6	3.4
Laurens	1	1.8	7	4.0	12	6.7
Lee	-	0	-	0	1	5.5
Lexington	4	1.5	17	2.0	24	3.0
McCormick	-	0	-	0	1	12
Marion	2	14.8	4	8.8	1	2.1
Marlboro	-	0	3	8.6	2	4.8
Newberry	1	3.7	2	2.1	4	3.9
Oconee	1	1.3	12	5.3	8	3.6
Orangeburg	-	0	5	4.3	8	6.4
Pickens	5	4.8	12	3.6	9	2.4
Richland	6	2.9	12	1.9	24	3.8
Saluda	1	5.4	3	5.4	3	4.8
Spartanburg	9	3.3	31	3.7	30	3.7
Sumter	2	2.8	8	3.6	7	2.9
Union	-	0	2	3.1	3	4.6
Williamsburg	-	0	-	0	1	2.7
York	8	3.7	23	3.4	20	3.1

¹Race of mother

²Rates per 1,000 live births. Rates calculated with 20 or fewer deaths are unreliable and should be used cautiously.

Table 6-B.

Black and Other¹ Neonatal Mortality and Neonatal Mortality Rates²
 South Carolina and Each County, 2010, 2008-2010, 2005-2007
 (Residence Data)

County of Residence	2010		2008-2010		2005-2007	
	Number	Rate	Number	Rate	Number	Rate
South Carolina	142	7.0	445	7.0	580	9.0
Abbeville	3	33.3	6	21.4	7	23.7
Aiken	3	4.7	12	6.1	21	11.3
Allendale	1	8.9	1	3.2	4	11.2
Anderson	4	8.2	15	10.1	18	12.3
Bamberg	2	15.7	3	8.0	2	4.6
Barnwell	1	6.5	2	4.1	8	15.0
Beaufort	2	3.5	9	4.8	18	9.6
Berkeley	2	2.9	11	5.1	24	11.1
Calhoun	-	0	-	0	4	15.6
Charleston	9	5.0	35	6.0	78	13.0
Cherokee	1	6.1	4	7.0	8	14.5
Chester	-	0.0	2	3.3	5	7.5
Chesterfield	3	14.7	12	17.8	8	11.0
Clarendon	1	4.4	2	3.0	4	5.5
Colleton	1	4.7	3	4.3	5	6.1
Darlington	4	9.6	13	10.3	9	7.1
Dillon	1	3.7	2	2.4	2	2.5
Dorchester	-	0	7	4.2	10	6.4
Edgefield	-	0	2	6.0	4	12.1
Fairfield	1	5.9	2	3.8	2	3.3
Florence	7	7.5	27	9.1	38	12.6
Georgetown	4	14.2	13	13.9	9	9.5
Greenville	7	4.7	39	8.5	38	8.6
Greenwood	1	2.8	8	7.4	18	16.8
Hampton	1	7.7	6	12.7	5	8.9
Horry	8	12.9	20	10.4	11	5.3
Jasper	-	0	3	6.3	3	6.4
Kershaw	-	0	1	1.4	5	7.1
Lancaster	2	7.5	8	9.6	8	9.0
Laurens	3	10.8	6	7.4	7	8.7
Lee	1	6.9	2	4.0	6	10.5
Lexington	5	7.4	10	5.0	16	8.4
McCormick	1	21.3	2	12.2	3	16.7
Marion	5	16.9	18	19.3	8	8.2
Marlboro	2	10.0	4	6.0	4	5.8
Newberry	-	0	-	0	2	3.5
Oconee	-	0	-	0	-	0
Orangeburg	12	13.7	26	9.3	39	13.5
Pickens	3	24.4	3	8.4	2	6.1
Richland	14	5.0	39	4.5	45	5.3
Saluda	2	31.3	3	14.2	-	0
Spartanburg	7	7.2	24	7.6	22	7.5
Sumter	7	8.5	16	6.2	12	4.6
Union	-	0	1	2.7	1	2.8
Williamsburg	2	7.6	8	8.8	13	12.8
York	9	11.4	15	6.5	24	11.0

¹Race of mother

²Rates per 1,000 live births. Rates calculated with 20 or fewer deaths are unreliable and should be used cautiously.

Table 7.
Postneonatal Mortality and Postneonatal Mortality Rates¹
South Carolina and Each County, 2010, 2008-2010, 2005-2007
(Residence Data)

County of Residence	2010		2008-2010		2005-2007	
	Number	Rate	Number	Rate	Number	Rate
South Carolina	164	2.8	528	2.9	567	3.1
Abbeville	1	4.0	3	3.7	7	8.0
Aiken	8	4.0	17	2.9	25	4.2
Allendale	-	0	2	5.2	5	11.7
Anderson	2	0.9	15	2.1	18	2.5
Bamberg	1	5.6	2	3.6	-	0
Barnwell	1	3.5	1	1.1	3	3.1
Beaufort	2	0.9	7	1.0	13	1.9
Berkeley	8	3.2	19	2.4	22	3.1
Calhoun	-	0	1	2.0	-	0
Charleston	16	3.3	45	3.0	49	3.2
Cherokee	3	4.3	10	4.7	13	6.2
Chester	-	0	3	2.4	4	2.9
Chesterfield	2	3.8	7	4.2	3	1.7
Clarendon	-	0	1	0.9	4	3.3
Colleton	1	2.1	6	3.9	7	4.0
Darlington	4	5.0	11	4.4	13	5.0
Dillon	2	4.3	3	2.1	6	4.1
Dorchester	4	2.2	11	2.0	5	0.9
Edgefield	-	0	-	0	2	2.7
Fairfield	1	4.2	1	1.3	2	2.3
Florence	5	2.8	23	4.1	22	3.7
Georgetown	1	1.7	6	3.0	10	4.6
Greenville	15	2.5	46	2.4	44	2.3
Greenwood	2	2.2	8	2.8	12	4.1
Hampton	-	0	-	0	1	1.1
Horry	9	2.9	22	2.3	30	3.1
Jasper	1	3.0	4	3.6	5	4.2
Kershaw	2	2.7	6	2.5	5	2.0
Lancaster	3	3.4	7	2.5	7	2.7
Laurens	1	1.2	8	3.1	16	6.1
Lee	2	10.4	3	4.6	3	4.0
Lexington	8	2.4	34	3.3	26	2.6
McCormick	-	0	-	0	1	3.7
Marion	2	4.6	9	6.5	7	4.8
Marlboro	-	0	3	3.0	5	4.5
Newberry	1	2.2	5	3.3	4	2.5
Oconee	2	2.4	6	2.4	4	1.6
Orangeburg	9	7.3	20	5.1	21	5.1
Pickens	7	6.0	11	3.0	7	1.7
Richland	10	2.1	38	2.5	43	2.9
Saluda	-	0	5	6.5	1	1.2
Spartanburg	10	2.7	37	3.2	35	3.2
Sumter	5	3.3	18	3.7	21	4.1
Union	1	3.1	5	4.9	5	4.9
Williamsburg	2	5.4	6	4.9	10	7.2
York	10	3.4	33	3.7	21	2.4

¹Rates per 1,000 live births. Rates calculated with 20 or fewer deaths are unreliable and should be used cautiously.

Table 7-A.

White¹ Postneonatal Mortality and Postneonatal Mortality Rates²
 South Carolina and Each County, 2010, 2008-2010, 2005-2007
 (Residence Data)

County of Residence	2010		2008-2010		2005-2007	
	Number	Rate	Number	Rate	Number	Rate
South Carolina	84	2.2	272	2.3	279	2.4
Abbeville	-	0	1	1.9	3	5.1
Aiken	5	3.7	9	2.3	17	4.1
Allendale	-	0	-	0	-	0
Anderson	1	0.6	10	1.8	10	1.8
Bamberg	-	0	1	5.7	-	0
Barnwell	-	0	-	0	-	0
Beaufort	2	1.3	4	0.8	7	1.4
Berkeley	5	2.7	12	2.1	13	2.6
Calhoun	-	0	1	3.9	-	0
Charleston	6	2.0	19	2.1	27	3.0
Cherokee	3	5.6	8	5.2	9	5.9
Chester	-	0	3	4.5	1	1.4
Chesterfield	2	6.2	5	5.1	3	2.9
Clarendon	-	0	1	2.1	1	2.0
Colleton	1	3.9	2	2.4	2	2.2
Darlington	3	7.6	6	5.0	5	3.8
Dillon	-	0	1	1.7	1	1.5
Dorchester	2	1.5	7	1.8	2	0.5
Edgefield	-	0	-	0	2	5.0
Fairfield	1	15	1	5	-	0
Florence	1	1.2	7	2.6	5	1.7
Georgetown	-	0	1	0.9	5	4.1
Greenville	8	1.7	23	1.6	24	1.7
Greenwood	-	0	3	1.7	8	4.4
Hampton	-	0	-	0	1	2.9
Horry	5	2.0	14	1.8	21	2.8
Jasper	-	0	1	1.6	3	4.3
Kershaw	2	3.7	6	3.6	1	0.6
Lancaster	2	3.3	3	1.6	4	2.3
Laurens	1	1.8	8	4.6	7	3.9
Lee	1	21.3	1	6.4	-	0
Lexington	4	1.5	22	2.6	14	1.7
McCormick	-	0	-	0	1	11.5
Marion	1	7.4	3	6.6	3	6.4
Marlboro	-	0	-	0	3	7.2
Newberry	-	0	3	3.1	2	2.0
Oconee	2	2.7	6	2.7	3	1.3
Orangeburg	1	2.7	3	2.6	6	4.8
Pickens	7	6.7	11	3.3	6	1.6
Richland	1	0.5	5	0.8	9	1.4
Saluda	-	0	3	5.4	1	1.6
Spartanburg	8	3.0	25	3.0	23	2.8
Sumter	1	1.4	6	2.7	6	2.5
Union	1	5.0	3	4.6	5	7.6
Williamsburg	-	0	1	3.0	1	2.7
York	7	3.2	23	3.4	14	2.2

¹Race of mother

²Rates per 1,000 live births. Rates calculated with 20 or fewer deaths are unreliable and should be used cautiously.

Table 7-B.

Black and Other¹ Postneonatal Mortality and Postneonatal Mortality Rates²
 South Carolina and Each County, 2010, 2008-2010, 2005-2007
 (Residence Data)

County of Residence	2010		2008-2010		2005-2007	
	Number	Rate	Number	Rate	Number	Rate
South Carolina	80	3.9	256	4.0	288	4.5
Abbeville	1	11.1	2	7.1	4	13.6
Aiken	3	4.7	8	4.1	8	4.3
Allendale	-	0	2	6.3	5	14.0
Anderson	1	2.1	5	3.4	8	5.5
Bamberg	1	7.9	1	2.7	-	0
Barnwell	1	6.5	1	2.0	3	5.6
Beaufort	-	0	3	1.6	6	3.2
Berkeley	3	4.4	7	3.2	9	4.2
Calhoun	-	0	-	0	-	0
Charleston	10	5.5	26	4.5	22	3.7
Cherokee	-	0	2	3.5	4	7.2
Chester	-	0	-	0	3	4.5
Chesterfield	-	0	2	3.0	-	0
Clarendon	-	0	-	0	3	4.2
Colleton	-	0	4	5.7	5	6.1
Darlington	1	2.4	5	4.0	8	6.3
Dillon	2	7.5	2	2.4	5	6.3
Dorchester	2	3.9	4	2.4	3	1.9
Edgefield	-	0	-	0	-	0
Fairfield	-	0	-	0	2	3.3
Florence	4	4.3	16	5.4	17	5.6
Georgetown	1	3.6	5	5.3	5	5.3
Greenville	7	4.7	23	5.0	20	4.5
Greenwood	2	5.5	5	4.6	4	3.7
Hampton	-	0	-	0	-	0
Horry	4	6.4	8	4.2	9	4.3
Jasper	1	7	3	6.3	2	4.2
Kershaw	-	0	-	0	4	5.6
Lancaster	1	3.8	4	4.8	3	3.4
Laurens	-	0	-	0	9	11.2
Lee	1	6.9	2	4.0	3	5.3
Lexington	4	6.0	12	5.9	12	6.3
McCormick	-	0	-	0	-	0
Marion	1	3.4	6	6.4	4	4.1
Marlboro	-	0	3	4.5	2	2.9
Newberry	1	5.4	2	3.6	2	3.5
Oconee	-	0	-	0	1	4.3
Orangeburg	8	9.2	17	6.1	15	5.2
Pickens	-	0	-	0	1	3.0
Richland	9	3.2	33	3.8	34	4.0
Saluda	-	0	2	9.4	-	0
Spartanburg	2	2.0	12	3.8	12	4.1
Sumter	4	4.9	12	4.7	15	5.8
Union	-	0	2	5.4	-	0
Williamsburg	2	7.6	5	5.5	9	8.9
York	3	3.8	10	4.3	7	3.2

¹Race of mother

²Rates per 1,000 live births. Rates calculated with 20 or fewer deaths are unreliable and should be used cautiously.

Table 8.
Leading Causes of Infant Death by Age at Death
South Carolina, 2010
(Residence Data)

Cause of Infant Death (ICD-10 Codes)	Total	Under 1 Day	1-6 Days	7-27 Days	Neonatal (<28 days)	Post-Neonatal (28-364 days)
Total Infant Deaths	430	150	51	65	266	164
Congenital malformations, deformations, etc. (Q00-Q99)	75	34	15	9	58	17
Disorders related to short gestation and low birthweight, NEC (P07)	62	55	3	3	61	1
Sudden infant death syndrome (R95)	49	-	-	7	7	42
Accidents (V01-X59, Y85-Y86)	32	1	1	1	3	29
Fetus and newborn affected by maternal complications of pregnancy (P01)	19	17	-	2	19	-
Diseases of circulatory system (I00-I99)	16	-	-	-	-	16
Newborn affected by complication of placenta, ect. (P02)	14	13	1	-	14	-
Bacterial sepsis of newborn (P36)	14	4	2	8	14	-
Neonatal hemorrhage (P50-P52, P54)	12	2	4	6	12	-
Intrauterine hypoxia and birth asphyxia (P20-P21)	10	2	6	2	10	-
All other causes	127	22	19	27	68	59

Table 8a.
 Leading Causes of White¹ Infant Death by Age at Death
 South Carolina, 2010
 (Residence Data)

Cause of Infant Death (ICD-10 Codes)	Total	Under 1 Day	1-6 Days	7-27 Days	Neonatal (<28 days)	Post-Neonatal (28-364 days)
Total White Infant Deaths	197	58	19	40	117	80
Congenital malformations, deformations, etc. (Q00-Q99)	36	16	3	6	25	11
Sudden infant death syndrome (R95)	21	-	-	5	5	16
Disorders related to short gestation and low birthweight, NEC (P07)	17	16	-	1	17	-
Accidents (V01-X59, Y85-Y86)	17	-	1	1	2	15
Fetus and newborn affected by maternal complications of pregnancy (P01)	10	9	-	1	10	-
Bacterial sepsis of newborn (P36)	8	2	-	6	8	-
Diseases of circulatory system (I00-I99)	7	-	-	-	-	7
Intrauterine hypoxia and birth asphyxia (P20-P21)	7	1	4	2	7	-
Neonatal hemorrhage (P50-P52, P54)	6	1	2	3	6	-
Necrotizing enterocolitis of newborn (P77)	6	-	-	6	6	-
Assault (Homicide) (X85-Y09, Y87.1)	6	-	-	-	-	6
All other causes	56	13	9	9	31	25

¹ Race of child

Table 8b.
Leading Causes of Black and Other¹ Infant Death by Age at Death
South Carolina, 2010
(Residence Data)

Cause of Infant Death (ICD-10 Codes)	Total	Under 1 Day	1-6 Days	7-27 Days	Neonatal (<28 days)	Post-Neonatal (28-364 days)
Total Black and Other Infant Deaths	233	92	32	25	149	84
Disorders related to short gestation and low birthweight, NEC (P07)	45	39	3	2	44	1
Congenital malformations, deformations, etc. (Q00-Q99)	39	18	12	3	33	6
Sudden infant death syndrome (R95)	28	-	-	2	2	26
Accidents (V01-X59, Y85-Y86)	15	1	-	-	1	14
Diseases of circulatory system (I00-I99)	9	-	-	-	-	9
Fetus and newborn affected by maternal complications of pregnancy (P01)	9	8	-	1	9	-
Newborn affected by complication of placenta, ect. (P02)	9	8	1	-	9	-
Bacterial sepsis of newborn (P36)	6	2	2	2	6	-
Neonatal hemorrhage (P50-P52, P54)	6	1	2	3	6	-
Respiratory distress of newborn (P22)	4	1	2	1	4	-
All other causes	63	14	10	11	35	28

¹ Race of child

Table 8c.
 Percent Changes of Leading Causes of Infant Death
 from 2009 to 2010, South Carolina

Cause of Infant Death Ranked by 2010 Data (ICD-10 Codes)	2009	2010	% Change
Total Infant Death	430	430	0.0%
Congenital malformations, deformations, etc. (Q00-Q99)	71	75	5.6%
Disorders related to short gestation and low birthweight, NEC (P07)	68	62	-8.8%
Sudden infant death syndrome (R95)	44	49	11.4%
Accidents (V01-X59, Y85-Y86)	33	32	-3.0%
Fetus and newborn affected by maternal complications of pregnancy (P01)	28	19	-32.1%
Diseases of circulatory system (I00-I99)	10	16	60.0%
Newborn affected by complication of placenta, ect. (P02)	13	14	7.7%
Bacterial sepsis of newborn (P36)	14	14	0.0%
Neonatal hemorrhage (P50-P52, P54)	11	12	9.1%
Intrauterine hypoxia and birth asphyxia (P20-P21)	6	10	66.7%
All other causes	129	127	-1.6%

Table 9.

Comparison of Characteristics from Birth Files, by Race¹
 Z-tests for differences in proportions³
 South Carolina, 2009 to 2010
 (Residence Data)

	2009		2010		Z-TEST	P-VALUE
	Percent	Number	Percent	Number		
MOTHER < 18 YEARS						
TOTAL ²	3.77	2,289	3.64	2,124	-1.1906	0.2338
White	2.79	1,097	2.79	1,057	-0.0085	0.9932
Black & Other	5.60	1,192	5.23	1,065	-1.6665	0.0956
MARITAL STATUS: UNMARRIED						
TOTAL ²	46.93	28,476	46.94	27,379	0.0537	0.9572
White	32.29	12,707	32.36	12,272	0.1872	0.8515
Black & Other	74.03	15,756	74.15	15,098	0.2890	0.7726
< 5 PRENATAL CARE VISITS						
TOTAL ²	5.80	3,518	5.82	3,392	0.1346	0.8929
White	5.04	1,983	5.03	1,906	-0.0903	0.9281
Black & Other	7.20	1,532	7.28	1,482	0.3178	0.7506
PRENATAL CARE BEGAN FIRST TRIMESTER						
TOTAL ²	70.33	42,675	72.08	42,039	6.6693	0.0000
White	74.03	29,129	75.82	28,757	5.7467	0.0000
Black & Other	63.52	13,520	65.15	13,266	3.4754	0.0005
VERY LOW BIRTHWEIGHT						
TOTAL ²	1.83	1,111	1.89	1,104	0.7909	0.4290
White	1.20	474	1.19	452	-0.1644	0.8694
Black & Other	2.98	635	3.20	651	1.2609	0.2073
LOW BIRTHWEIGHT						
TOTAL ²	9.98	6,057	9.91	5,782	-0.3925	0.6947
White	7.69	3,024	7.42	2,816	-1.3695	0.1708
Black & Other	14.23	3,029	14.55	2,963	0.9329	0.3508

¹Race of mother

²Includes unknown races

³Proportions are expressed as percentages

Table 9. (continued)

Comparison of Characteristics from Birth Files, by Race¹
 Z-tests for differences in proportions³
 South Carolina, 2009 to 2010
 (Residence Data)

	2009		2010		Z-TEST	P-VALUE
	Percent	Number	Percent	Number		

PREMATURE BIRTHS (< 37 WEEKS)						
TOTAL ²	11.71	7,103	11.50	6,705	-1.1273	0.2596
White	10.33	4,066	9.90	3,753	-2.0189	0.0435
Black & Other	14.24	3,031	14.48	2,948	0.6921	0.4889

VERY PREMATURE BIRTHS (< 32 WEEKS)						
TOTAL ²	1.95	1,184	2.02	1,180	0.8898	0.3736
White	1.34	529	1.29	491	-0.6067	0.5441
Black & Other	3.07	653	3.37	687	1.7693	0.0769

PREMATURE 32-36 WEEKS BIRTHS						
TOTAL ²	9.75	5,919	9.47	5,525	-1.6458	0.0998
White	8.99	3,537	8.60	3,262	-1.9049	0.0568
Black & Other	11.17	2,378	11.10	2,261	-0.2210	0.8251

KOTELCHUCK INDEX: ADEQUATE, ADEQUATE PLUS						
TOTAL ²	73.81	44,791	73.90	43,102	0.3416	0.7327
White	76.23	29,994	76.62	29,058	1.2705	0.2039
Black & Other	69.39	14,769	68.91	14,030	-1.0688	0.2852

KOTELCHUCK INDEX: INTERMEDIATE						
TOTAL ²	6.38	3,869	6.47	3,772	0.6427	0.5204
White	6.67	2,625	6.63	2,514	-0.2383	0.8117
Black & Other	5.84	1,244	6.17	1,256	1.3909	0.1643

KOTELCHUCK INDEX: INADEQUATE						
TOTAL ²	18.86	11,447	18.45	10,760	-1.8395	0.0658
White	16.19	6,372	15.63	5,928	-2.1422	0.0322
Black & Other	23.81	5,067	23.68	4,822	-0.2975	0.7661

HISPANIC MOTHER						
TOTAL ²	9.16	5,557	8.63	5,034	-3.1896	0.0014
White	13.55	5,331	12.63	4,791	-3.7737	0.0002
Black & Other	1.06	226	1.19	243	1.2725	0.2032

¹Race of mother

²Includes unknown races

³Proportions are expressed as percentages

Table 9-A.

Comparison of Characteristics of Infants who Died, by Race¹
 Z-tests for differences in proportions³
 South Carolina, 2009 to 2010
 (Residence Data)

	2009		2010		Z-TEST	P-VALUE
	Percent	Number	Percent	Number		

MOTHER < 18 YEARS						
TOTAL ²	5.81	25	5.14	22	-0.4337	0.6645
White	5.83	12	6.25	13	0.1814	0.8560
Black & Other	5.80	13	4.09	9	-0.8314	0.4057

MARITAL STATUS: UNMARRIED						
TOTAL ²	62.33	268	63.08	270	0.2297	0.8183
White	47.57	98	51.92	108	0.8851	0.3761
Black & Other	75.89	170	73.64	162	-0.5474	0.5841

< 5 PRENATAL CARE VISITS						
TOTAL ²	29.30	126	30.61	131	0.4173	0.6765
White	27.18	56	26.44	55	-0.1704	0.8647
Black & Other	31.25	70	34.55	76	0.7390	0.4599

PRENATAL CARE BEGAN FIRST TRIMESTER						
TOTAL ²	57.44	247	57.71	247	0.0795	0.9366
White	56.80	117	59.62	124	0.5815	0.5609
Black & Other	58.04	130	55.91	123	-0.4525	0.6509

VERY LOW BIRTHWEIGHT						
TOTAL ²	52.79	227	50.23	215	-0.7493	0.4536
White	42.23	87	44.23	92	0.4102	0.6816
Black & Other	62.50	140	55.91	123	-1.4130	0.1576

LOW BIRTHWEIGHT						
TOTAL ²	66.28	285	67.06	287	0.2414	0.8092
White	57.77	119	59.62	124	0.3819	0.7025
Black & Other	74.11	166	74.09	163	-0.0039	0.9969

¹Race of mother

²Includes unknown races

³Proportions are expressed as percentages

Table 9-A. (continued)
 Comparison of Characteristics of Infants who Died, by Race¹
 Z-tests for differences in proportions³
 South Carolina, 2009 to 2010
 (Residence Data)

	2009		2010		Z-TEST	P-VALUE
	Percent	Number	Percent	Number		

PREMATURE BIRTHS (< 37 WEEKS)						
TOTAL ²	66.98	288	67.29	288	0.0976	0.9223
White	60.19	124	59.13	123	-0.2197	0.8261
Black & Other	73.21	164	75.00	165	0.4294	0.6676

VERY PREMATURE BIRTHS (< 32 WEEKS)						
TOTAL ²	53.95	232	50.93	218	-0.8853	0.3760
White	44.66	92	44.71	93	0.0105	0.9916
Black & Other	62.50	140	56.82	125	-1.2203	0.2224

PREMATURE 32-36 WEEKS BIRTHS						
TOTAL ²	13.02	56	16.36	70	1.3786	0.1680
White	15.53	32	14.42	30	-0.3167	0.7515
Black & Other	10.71	24	18.18	40	2.2399	0.0251

KOTELCHUCK INDEX: ADEQUATE, ADEQUATE PLUS						
TOTAL ²	63.95	275	64.49	276	0.1627	0.8708
White	59.71	123	67.79	141	1.7101	0.0873
Black & Other	67.86	152	61.36	135	-1.4309	0.1525

KOTELCHUCK INDEX: INTERMEDIATE						
TOTAL ²	3.72	16	4.44	19	0.5318	0.5948
White	5.34	11	3.85	8	-0.7262	0.4677
Black & Other	2.23	5	5.00	11	1.5645	0.1177

KOTELCHUCK INDEX: INADEQUATE						
TOTAL ²	27.21	117	27.57	118	0.1185	0.9057
White	28.64	59	24.52	51	-0.9493	0.3425
Black & Other	25.89	58	30.45	67	1.0686	0.2853

HISPANIC MOTHER						
TOTAL ²	7.21	31	5.61	24	-0.9578	0.3382
White	14.08	29	11.54	24	-0.7732	0.4394
Black & Other	0.89	2	0.00	0	-1.4047	0.1601

¹Race of mother

²Includes unknown races

³Proportions are expressed as percentages

Table 10.
 Infant Mortality Rates¹ by Race² and Birthweight³ Group
 South Carolina
 2008, 2009, and 2010
 (Residence Data)

Infant Mortality for Very Low Birthweight (0-1499 grams)									
	Total			White			Black & Other		
Year	Number of Live Birth	Number of Infant Death	Rate	Number of Live Birth	Number of Infant Death	Rate	Number of Live Birth	Number of Infant Death	Rate
2008	1,180*	286*	242.4	508	113	222.4	669	172	257.1
2009	1,111*	227	204.3	474	87	183.5	635	140	220.5
2010	1,104*	215	194.7	452	92	203.5	651	123	188.9

Infant Mortality for Intermediate Low Birthweight (1500-2499 grams)									
	Total			White			Black & Other		
Year	Number of Live Birth	Number of Infant Death	Rate	Number of Live Birth	Number of Infant Death	Rate	Number of Live Birth	Number of Infant Death	Rate
2008	5,058*	70	13.8	2,557	39	15.3	2,498	31	12.4
2009	4,946*	58	11.7	2,550	32	12.5	2,394	26	10.9
2010	4,678*	72	15.4	2,364	32	13.5	2,312	40	17.3

Infant Mortality for Normal Birthweight (2500+ grams)									
	Total			White			Black & Other		
Year	Number of Live Birth	Number of Infant Death	Rate	Number of Live Birth	Number of Infant Death	Rate	Number of Live Birth	Number of Infant Death	Rate
2008	56,796*	142	2.5	37,626	93	2.5	19,138	49	2.6
2009	54,563*	141	2.6	36,268	84	2.3	18,238	57	3.1
2010	52,462*	139	2.6	35,062	82	2.3	17,374	57	3.3

¹Rates per 1,000 live births

²Race of mother

³Does not include missing birthweights

*Includes unknown race

Table 10-A.
 Neonatal Mortality Rates¹ by Race² and Birthweight³ Group
 South Carolina
 2008, 2009, and 2010
 (Residence Data)

Neonatal Mortality for Very Low Birthweight (0-1499 grams)									
	Total			White			Black & Other		
Year	Number of Live Birth	Number of Infant Death	Rate	Number of Live Birth	Number of Infant Death	Rate	Number of Live Birth	Number of Infant Death	Rate
2008	1,180*	236*	200.0	508	97	190.9	669	138	206.3
2009	1,111*	191	171.9	474	82	173.0	635	109	171.7
2010	1,104*	181	163.9	452	75	165.9	651	106	162.8

Neonatal Mortality for Intermediate Low Birthweight (1500-2499 grams)									
	Total			White			Black & Other		
Year	Number of Live Birth	Number of Infant Death	Rate	Number of Live Birth	Number of Infant Death	Rate	Number of Live Birth	Number of Infant Death	Rate
2008	5,058*	35	6.9	2,557	21	8.2	2,498	14	5.6
2009	4,946*	24	4.9	2,550	13	5.1	2,394	11	4.6
2010	4,678*	42	9.0	2,364	22	9.3	2,312	20	8.7

Neonatal Mortality for Normal Birthweight (2500+ grams)									
	Total			White			Black & Other		
Year	Number of Live Birth	Number of Infant Death	Rate	Number of Live Birth	Number of Infant Death	Rate	Number of Live Birth	Number of Infant Death	Rate
2008	56,796*	37	0.7	37,626	26	0.7	19,138	11	0.6
2009	54,563*	42	0.8	36,268	24	0.7	18,238	18	1.0
2010	52,462*	41	0.8	35,062	26	0.7	17,374	15	0.9

¹Rates per 1,000 live births

²Race of mother

³Does not include missing birthweights

*Includes unknown race

Table 10-B.
 Postneonatal Mortality Rates¹ by Race² and Birthweight³ Group
 South Carolina
 2008, 2009, and 2010
 (Residence Data)

Postneonatal Mortality for Very Low Birthweight (0-1499 grams)									
	Total			White			Black & Other		
Year	Number of Live Birth	Number of Infant Death	Rate	Number of Live Birth	Number of Infant Death	Rate	Number of Live Birth	Number of Infant Death	Rate
2008	1,180*	50	42.4	508	16	31.5	669	34	50.8
2009	1,111*	36	32.4	474	5	10.5	635	31	48.8
2010	1,104*	34	30.8	452	17	37.6	651	17	26.1

Postneonatal Mortality for Intermediate Low Birthweight (1500-2499 grams)									
	Total			White			Black & Other		
Year	Number of Live Birth	Number of Infant Death	Rate	Number of Live Birth	Number of Infant Death	Rate	Number of Live Birth	Number of Infant Death	Rate
2008	5,058*	35	6.9	2,557	18	7.0	2,498	17	6.8
2009	4,946*	34	6.9	2,550	19	7.5	2,394	15	6.3
2010	4,678*	30	6.4	2,364	10	4.2	2,312	20	8.7

Postneonatal Mortality for Normal Birthweight (2500+ grams)									
	Total			White			Black & Other		
Year	Number of Live Birth	Number of Infant Death	Rate	Number of Live Birth	Number of Infant Death	Rate	Number of Live Birth	Number of Infant Death	Rate
2008	56,796*	105	1.8	37,626	67	1.8	19,138	38	2.0
2009	54,563*	99	1.8	36,268	60	1.7	18,238	39	2.1
2010	52,462*	98	1.9	35,062	56	1.6	17,374	42	2.4

¹Rates per 1,000 live births

²Race of mother

³Does not include missing birthweights

*Includes unknown race

Figure 1
Percentage of Infant Deaths by Birthweight Group
South Carolina, 2008-2010 Residence Data

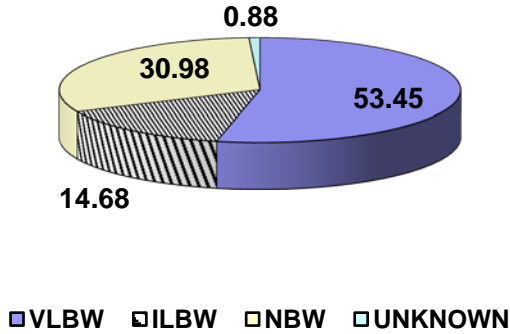


Figure 1-A
Percentage of White Infant Deaths by Birthweight Group
South Carolina, 2008-2010 Residence Data

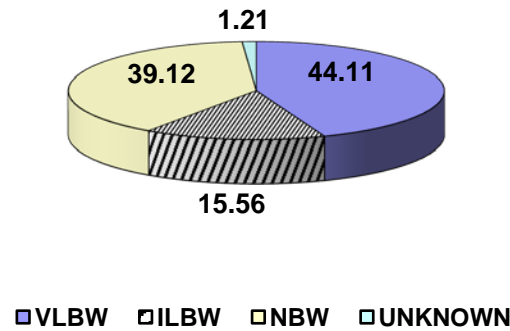


Figure 1-B
Percentage of Black and Other Infant Deaths by Birthweight Group
South Carolina, 2008-2010 Residence Data

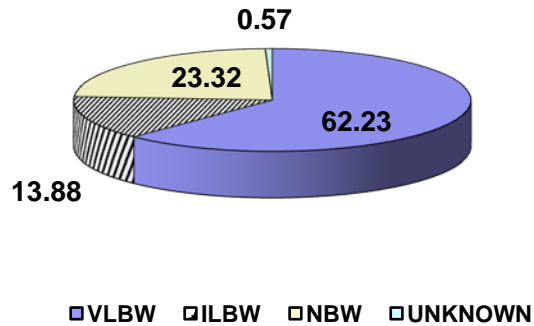
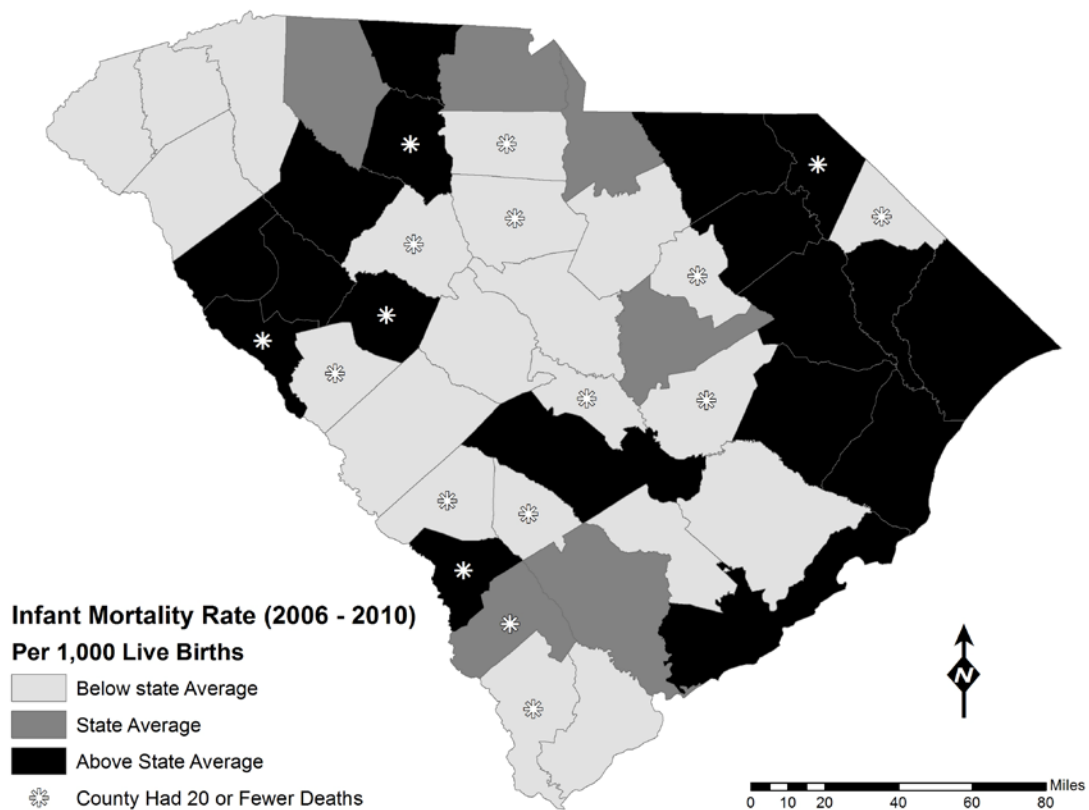


Figure 2.
Five Year Infant Mortality Rates by County
South Carolina
2006-2010
(Residence Data)



NOTE: Counties with rates calculated with 20 or fewer deaths are unreliable and should be used cautiously.

Above State Average indicates a rate greater than 8.2.
State Average indicates a rate between 7.6 and 8.2 inclusive.
Below State Average indicates a rate lower than 7.6.