



Infant Mortality and Selected Birth Characteristics



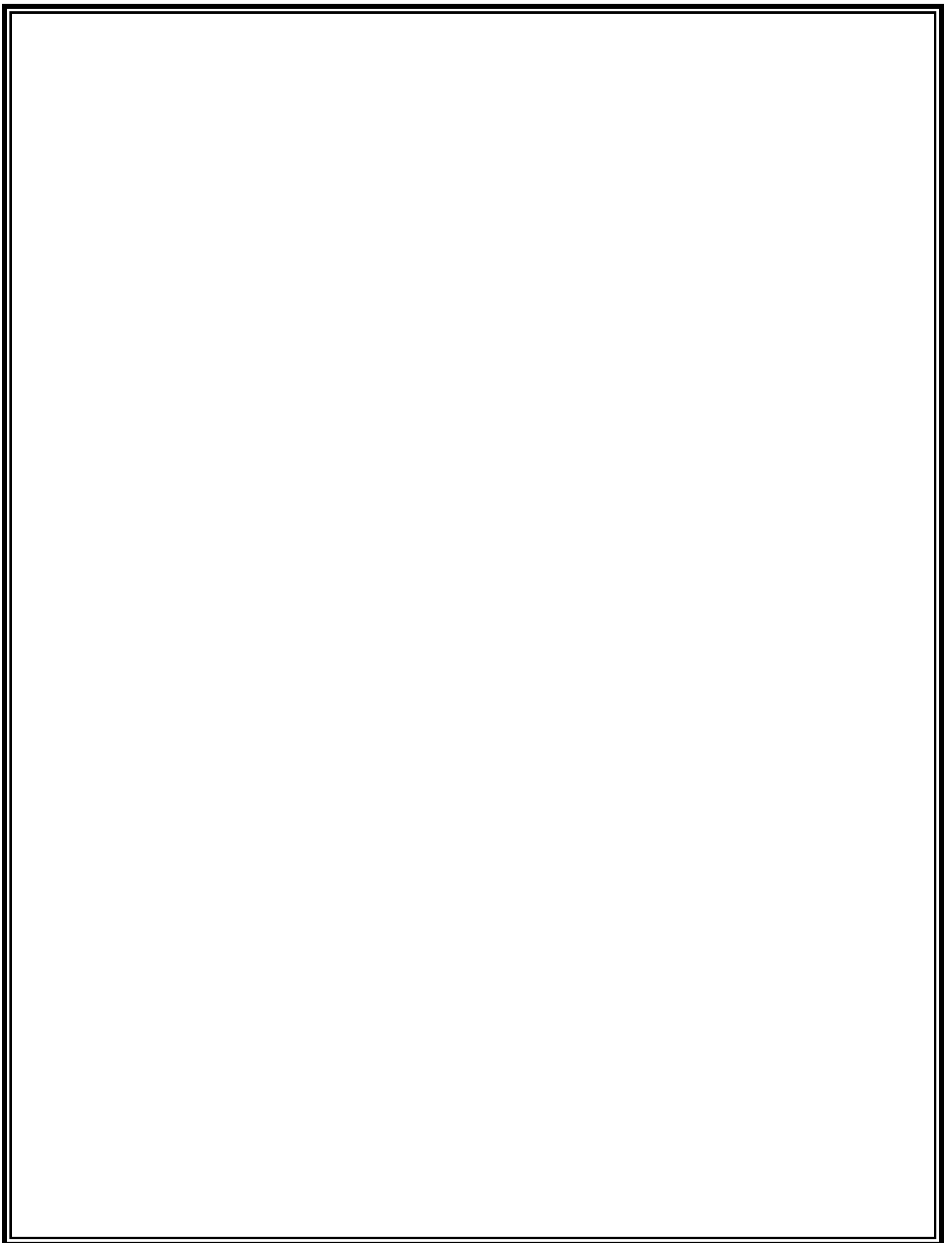
2014 South Carolina Residence Data

October 2015

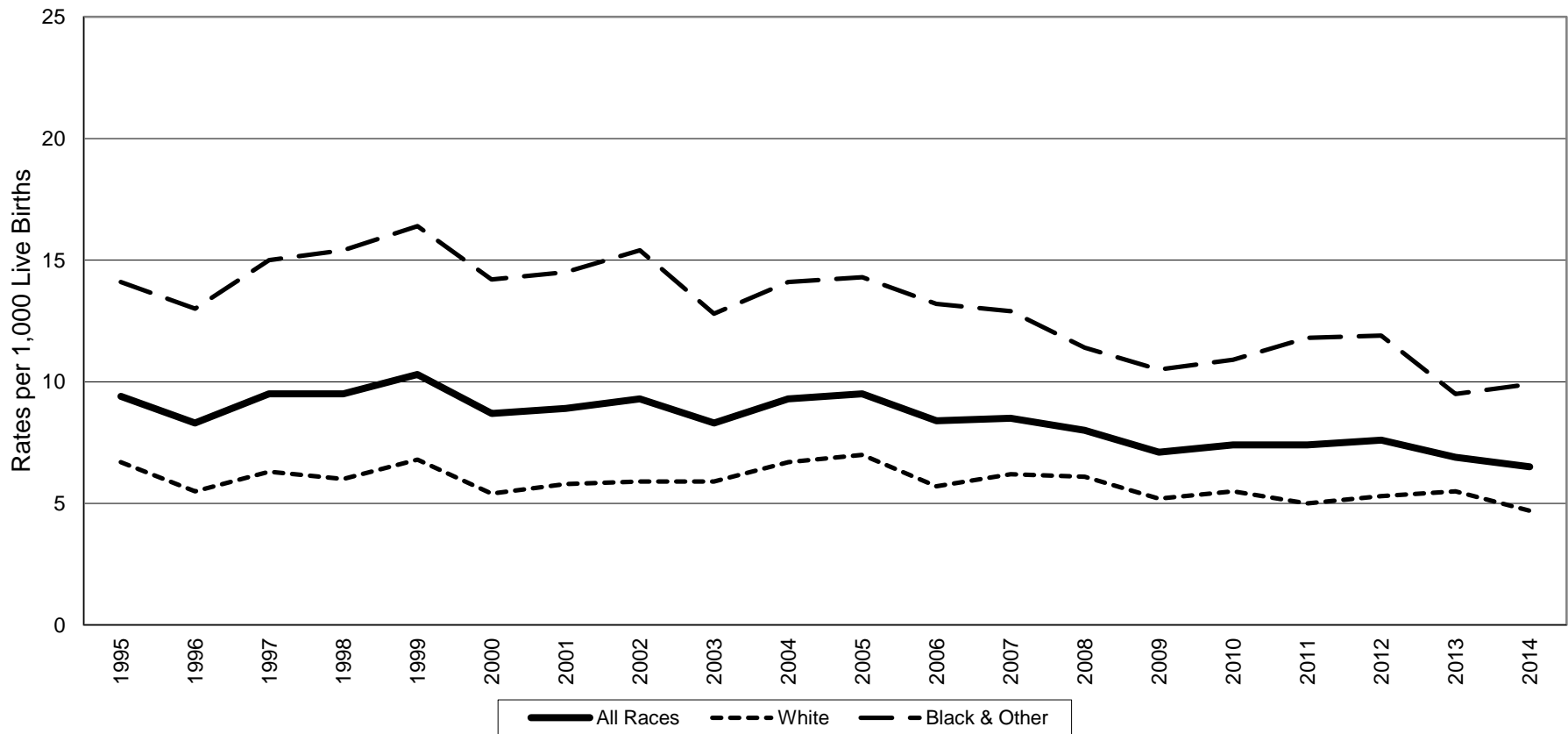
**South Carolina Department of Health and Environmental Control
Office of Public Health Statistics and Information Services
Division of Biostatistics
2600 Bull Street
Columbia, SC 29201**

**Phone: (803)898-3649
Fax: (803)898-3661**





South Carolina Infant Mortality Rates¹ by Race² Residence Data, 1995-2014



	1995	1996	1997	1998	1999	2000	2001	2002	2003	2004	2005	2006	2007	2008	2009	2010	2011	2012	2013	2014
All Races	9.4	8.3	9.5	9.5	10.3	8.7	8.9	9.3	8.3	9.3	9.5	8.4	8.5	8.0	7.1	7.4	7.4	7.6	6.9	6.5
White	6.7	5.5	6.3	6.0	6.8	5.4	5.8	5.9	5.9	6.7	7.0	5.7	6.2	6.1	5.2	5.5	5.0	5.3	5.5	4.7
Black & Other	14.1	13.0	15.0	15.4	16.4	14.2	14.5	15.4	12.8	14.1	14.3	13.2	12.9	11.4	10.5	10.9	11.8	11.9	9.5	9.9

¹Rates per 1,000 live births

²Race of mother

Table 1.
 Infant Mortality Rates¹ with 95% Confidence Intervals²
 South Carolina, 1995-2014
 (Residence Data)

Year	Number of Live Births	Number of Infant Deaths	Infant Mortality Rate	95% Confidence Intervals
1995	50,913	480	9.4	(8.6, 10.2)
1996	51,105	424	8.3	(7.5, 9.1)
1997	52,205	494	9.5	(8.7, 10.3)
1998	53,833	511	9.5	(8.7, 10.3)
1999	54,706	564	10.3	(9.4, 11.2)
2000	55,964	488	8.7	(7.9, 9.5)
2001	55,748	496	8.9	(8.1, 9.7)
2002	54,453	507	9.3	(8.5, 10.1)
2003	55,461	463	8.3	(7.5, 9.1)
2004	56,543	524	9.3	(8.5, 10.1)
2005	57,538	549	9.5	(8.7, 10.3)
2006	62,191	520	8.4	(7.6, 9.1)
2007	62,933	538	8.5	(7.8, 9.3)
2008	63,077	504	8.0	(7.3, 8.7)
2009	60,682	430	7.1	(6.4, 7.8)
2010	58,325	430	7.4	(6.7, 8.1)
2011	57,338	423	7.4	(6.7, 8.1)
2012	57,100	435	7.6	(6.9, 8.3)
2013	56,743	389	6.9	(6.2, 7.6)
2014	57,631	372	6.5	(5.8, 7.2)

Table 2.
 Infant Mortality Rates¹ with 95% Confidence Intervals²
 South Carolina
 1995-1999, 2000-2004, 2005-2009, 2010-2014
 (Residence Data)

Years	Number of Live Births	Number of Infant Deaths	Infant Mortality Rate	95% Confidence Intervals
1995-1999	262,762	2,473	9.4	(9.0, 9.8)
2000-2004	278,169	2,478	8.9	(8.6, 9.3)
2005-2009	306,421	2,541	8.3	(8.0, 8.6)
2010-2014	287,137	2,049	7.1	(6.8, 7.4)

¹Rates per 1,000 live births

² $r \pm 61.981 (r/n)^{1/2}$, where r = infant mortality rate and n = number of live births

Table 3.
 Infant, Neonatal and Postneonatal Mortality and Mortality Rates¹ by Race²
 South Carolina
 2010, 2011, 2012, 2013 and 2014
 (Residence Data)

Infant Mortality									
	Total			White			Black & Other		
Year	Number of Live Birth	Number of Infant Death	Rate	Number of Live Birth	Number of Infant Death	Rate	Number of Live Birth	Number of Infant Death	Rate
2010	58,325*	430	7.4	37,927	208	5.5	20,361	222	10.9
2011	57,338*	423	7.4	37,406	188	5.0	19,894	235	11.8
2012	57,100*	435	7.6	37,092	197	5.3	19,959	238	11.9
2013	56,743*	389	6.9	37,177	204	5.5	19,513	185	9.5
2014	57,631*	372	6.5	37,923	177	4.7	19,660	195	9.9

Neonatal Mortality (<28 days)									
	Total			White			Black & Other		
Year	Number of Live Birth	Number of Infant Death	Rate	Number of Live Birth	Number of Infant Death	Rate	Number of Live Birth	Number of Infant Death	Rate
2010	58,325*	266	4.6	37,927	124	3.3	20,361	142	7.0
2011	57,338*	254	4.4	37,406	104	2.8	19,894	150	7.5
2012	57,100*	270	4.7	37,092	118	3.2	19,959	152	7.6
2013	56,743*	263	4.6	37,177	138	3.7	19,513	125	6.4
2014	57,631*	246	4.3	37,923	113	3.0	19,660	133	6.8

Postneonatal Mortality (28-364 days)									
	Total			White			Black & Other		
Year	Number of Live Birth	Number of Infant Death	Rate	Number of Live Birth	Number of Infant Death	Rate	Number of Live Birth	Number of Infant Death	Rate
2010	58,325*	164	2.8	37,927	84	2.2	20,361	80	3.9
2011	57,338*	169	2.9	37,406	84	2.2	19,894	85	4.3
2012	57,100*	165	2.9	37,092	79	2.1	19,959	86	4.3
2013	56,743*	126	2.2	37,177	66	1.8	19,513	60	3.1
2014	57,631*	126	2.2	37,923	64	1.7	19,660	62	3.2

¹Rates per 1,000 live births

²Race of mother

*Includes unknown race

Table 4.
Infant Mortality and Infant Mortality Rates¹
South Carolina and Each County, 2014, 2012-2014, 2009-2011
(Residence Data)

County of Residence	2014		2012-2014		2009-2011	
	Number	Rate	Number	Rate	Number	Rate
South Carolina	372	6.5	1,196	7.0	1,283	7.3
Abbeville	3	12.1	10	13.2	13	16.2
Aiken	12	6.3	39	7.0	32	5.5
Allendale	2	19.4	3	10.4	3	8.5
Anderson	14	6.2	49	7.3	51	7.5
Bamberg	2	13.5	4	8.7	5	9.4
Barnwell	2	7.5	10	11.1	5	5.7
Beaufort	8	3.9	23	3.7	25	3.9
Berkeley	19	7.2	57	7.3	43	5.6
Calhoun	-	0	-	0	3	6.3
Charleston	24	4.8	70	4.9	90	6.2
Cherokee	2	2.9	11	5.5	18	8.5
Chester	5	12.9	12	10.0	5	4.1
Chesterfield	4	7.7	16	10.2	29	18.3
Clarendon	5	14.2	15	14.1	4	3.6
Colleton	3	6.7	13	9.7	17	11.7
Darlington	3	3.8	18	7.6	30	12.4
Dillon	6	15.0	11	8.5	9	6.7
Dorchester	9	4.7	27	4.9	27	4.9
Edgefield	4	20.6	8	12.3	3	5.2
Fairfield	2	10.3	7	10.8	6	8.1
Florence	24	13.6	76	14.3	65	11.8
Georgetown	1	1.8	13	7.4	17	9.0
Greenville	37	5.8	106	5.7	123	6.6
Greenwood	1	1.2	18	6.8	27	9.7
Hampton	3	13.6	7	10.4	2	2.6
Horry	21	6.9	64	7.0	73	7.8
Jasper	1	2.6	4	4.0	6	5.7
Kershaw	6	8.1	17	8.0	11	4.9
Lancaster	10	10.0	23	8.1	21	7.9
Laurens	7	9.5	21	9.5	13	5.2
Lee	-	0	3	5.4	7	11.6
Lexington	16	5.0	57	5.9	59	5.8
McCormick	1	11.5	3	16.5	5	24.3
Marion	6	14.9	15	12.8	23	17.1
Marlboro	4	13.2	7	7.7	14	14.8
Newberry	3	6.5	9	6.8	6	4.2
Oconee	1	1.2	11	4.7	10	4.0
Orangeburg	12	12.6	40	12.7	38	10.1
Pickens	6	4.6	25	6.9	32	8.9
Richland	34	7.1	120	8.4	99	6.7
Saluda	3	10.8	7	9.3	10	13.2
Spartanburg	20	5.6	44	4.1	85	7.6
Sumter	8	5.5	24	5.3	38	8.2
Union	1	3.1	4	4.3	7	7.2
Williamsburg	-	0	10	10.0	14	12.3
York	17	5.8	65	7.4	59	6.7

¹Rates per 1,000 live births. Rates calculated with 20 or fewer deaths are unreliable and should be used cautiously.

Table 4-A.
White¹ Infant Mortality and Infant Mortality Rates²
South Carolina and Each County, 2014, 2012-2014, 2009-2011
(Residence Data)

County of Residence	2014		2012-2014		2009-2011	
	Number	Rate	Number	Rate	Number	Rate
South Carolina	177	4.7	578	5.2	602	5.2
Abbeville	1	5.6	6	11.6	5	9.6
Aiken	7	5.6	20	5.4	14	3.6
Allendale	-	0	-	0	-	0
Anderson	7	3.9	30	5.7	30	5.6
Bamberg	-	0	-	0	1	5.8
Barnwell	1	7.8	2	4.9	1	2.4
Beaufort	5	3.4	16	3.6	13	2.8
Berkeley	7	3.7	22	3.9	26	4.7
Calhoun	-	0	-	0	1	3.9
Charleston	9	2.7	32	3.4	38	4.2
Cherokee	-	0	8	5.5	14	8.8
Chester	1	4.9	5	7.8	3	4.5
Chesterfield	4	13.2	12	13.0	14	15.3
Clarendon	3	19.5	5	11.0	1	2.1
Colleton	1	4.0	2	2.8	6	7.8
Darlington	2	5.0	7	5.8	13	10.9
Dillon	2	12.7	2	3.8	2	3.7
Dorchester	7	5.3	15	3.9	15	4.0
Edgefield	2	18.9	3	8.9	-	0
Fairfield	-	0	-	0	4	17.4
Florence	5	5.8	15	5.9	23	8.6
Georgetown	1	3.0	6	6.2	3	2.9
Greenville	21	4.4	66	4.7	61	4.3
Greenwood	-	0	8	5.0	13	7.6
Hampton	1	10.5	3	10.9	-	0
Horry	19	7.8	45	6.2	45	6.1
Jasper	1	4.6	4	7.2	2	3.5
Kershaw	4	7.5	12	7.8	7	4.4
Lancaster	4	5.6	13	6.5	11	5.9
Laurens	5	9.5	15	9.6	8	4.6
Lee	-	0	-	0	1	6.8
Lexington	13	5.1	36	4.7	38	4.7
McCormick	-	0	-	0	-	0
Marion	1	7.8	1	2.8	5	11.5
Marlboro	3	24.8	3	8.5	5	15.2
Newberry	3	10.9	5	6.4	3	3.4
Oconee	1	1.4	9	4.3	9	4.0
Orangeburg	1	3.5	7	7.6	5	4.5
Pickens	6	5.1	24	7.3	28	8.6
Richland	4	2.0	28	4.7	21	3.3
Saluda	2	10.3	3	5.4	6	10.6
Spartanburg	8	3.0	25	3.2	55	6.8
Sumter	2	3.0	7	3.3	14	6.4
Union	1	5.0	4	6.7	4	6.4
Williamsburg	-	0	4	12.0	-	0
York	12	5.7	48	7.6	33	5.1

¹Race of mother

²Rates per 1,000 live births. Rates calculated with 20 or fewer deaths are unreliable and should be used cautiously.

Table 4-B.
Black and Other¹ Infant Mortality and Infant Mortality Rates²
South Carolina and Each County, 2014, 2012-2014, 2009-2011
(Residence Data)

County of Residence	2014		2012-2014		2009-2011	
	Number	Rate	Number	Rate	Number	Rate
South Carolina	195	9.9	618	10.5	681	11.1
Abbeville	2	28.2	4	16.5	8	28.8
Aiken	5	7.8	19	10.4	18	9.4
Allendale	2	24.7	3	12.9	3	10.2
Anderson	7	14.1	19	13.1	21	14.4
Bamberg	2	19.8	4	12.7	4	11.1
Barnwell	1	7.3	8	16.3	4	8.7
Beaufort	3	5.3	7	4.1	12	6.9
Berkeley	12	16.3	35	16.1	17	8.2
Calhoun	-	0	-	0	2	9.1
Charleston	15	9.0	38	7.6	52	9.5
Cherokee	2	10.4	3	5.4	4	7.5
Chester	4	21.7	7	12.4	2	3.6
Chesterfield	-	0	4	6.3	15	22.6
Clarendon	2	10.1	10	16.4	3	4.8
Colleton	2	10.1	11	17.6	11	16.1
Darlington	1	2.5	11	9.4	17	14.0
Dillon	4	16.5	9	11.8	7	8.8
Dorchester	2	3.4	12	7.3	12	7.2
Edgefield	2	23.0	5	16.0	3	10.2
Fairfield	2	17.7	7	16.8	2	3.9
Florence	19	21.0	61	22.0	42	14.7
Georgetown	-	0	7	8.9	14	15.9
Greenville	16	10.5	40	9.0	62	14.1
Greenwood	1	2.9	10	9.4	14	13.2
Hampton	2	16.1	4	10.0	2	4.6
Horry	2	3.3	19	9.9	28	14.8
Jasper	-	0	-	0	4	8.5
Kershaw	2	9.5	5	8.5	4	6.2
Lancaster	6	20.5	10	12.2	10	12.7
Laurens	2	9.6	6	9.2	5	6.3
Lee	-	0	3	7.6	6	13.2
Lexington	3	4.6	21	10.5	21	10.5
McCormick	1	19.2	3	25.9	5	37.0
Marion	5	18.2	14	17.2	18	19.7
Marlboro	1	5.5	4	7.2	9	14.6
Newberry	-	0	4	7.4	3	5.6
Oconee	-	0	2	9.3	1	4.4
Orangeburg	11	16.5	33	14.8	33	12.4
Pickens	-	0	1	3.1	4	11.8
Richland	30	10.8	92	11.0	78	9.3
Saluda	1	11.8	4	19.9	4	20.6
Spartanburg	12	12.7	19	6.8	30	9.9
Sumter	6	7.6	17	7.1	24	9.8
Union	-	0	-	0	3	8.6
Williamsburg	-	0	6	9.0	14	16.9
York	5	6.1	17	7.0	26	11.1

¹Race of mother

²Rates per 1,000 live births. Rates calculated with 20 or fewer deaths are unreliable and should be used cautiously.

Table 5.

Infant, Neonatal and Postneonatal Mortality Rates¹ by Race²
 and Percent Changes from 2013 to 2014
 South Carolina
 (Residence Data)

Infant Mortality			
Year	Total	White	Black & Other
2013	6.9	5.5	9.5
2014	6.5	4.7	9.9
Percent Change	-5.8%	-14.5%	4.2%

Neonatal Mortality			
Year	Total	White	Black & Other
2013	4.6	3.7	6.4
2014	4.3	3.0	6.8
Percent Change	-6.5%	-18.9%	6.2%

Postneonatal Mortality			
Year	Total	White	Black & Other
2013	2.2	1.8	3.1
2014	2.2	1.7	3.2
Percent Change	0.0%	-5.6%	3.2%

¹Rates per 1,000 live births

²Race of mother

Table 6.
Neonatal Mortality and Neonatal Mortality Rates¹
South Carolina and Each County, 2014, 2012-2014, 2009-2011
(Residence Data)

County of Residence	2014		2012-2014		2009-2011	
	Number	Rate	Number	Rate	Number	Rate
South Carolina	246	4.3	779	4.5	780	4.4
Abbeville	1	4.0	7	9.2	9	11.2
Aiken	8	4.2	27	4.9	15	2.6
Allendale	2	19.4	3	10.4	2	5.7
Anderson	11	4.8	27	4.0	36	5.3
Bamberg	2	13.5	4	8.7	4	7.5
Barnwell	-	0	5	5.6	3	3.4
Beaufort	8	3.9	17	2.8	18	2.8
Berkeley	11	4.2	34	4.3	23	3.0
Calhoun	-	0	-	0	2	4.2
Charleston	18	3.6	50	3.5	45	3.1
Cherokee	1	1.4	5	2.5	9	4.3
Chester	4	10.3	8	6.7	3	2.5
Chesterfield	4	7.7	13	8.3	20	12.6
Clarendon	2	5.7	8	7.5	3	2.7
Colleton	2	4.5	8	6.0	11	7.6
Darlington	3	3.8	8	3.4	17	7.0
Dillon	5	12.5	8	6.2	5	3.7
Dorchester	6	3.1	21	3.8	12	2.2
Edgefield	2	10.3	5	7.7	3	5.2
Fairfield	2	10.3	6	9.3	4	5.4
Florence	16	9.1	53	10.0	38	6.9
Georgetown	1	1.8	9	5.1	12	6.3
Greenville	21	3.3	71	3.8	69	3.7
Greenwood	-	0	14	5.3	20	7.2
Hampton	1	4.5	3	4.4	2	2.6
Horry	14	4.6	40	4.4	46	4.9
Jasper	1	2.6	4	4.0	4	3.8
Kershaw	5	6.7	12	5.6	5	2.2
Lancaster	6	6.0	16	5.6	14	5.3
Laurens	6	8.2	15	6.8	8	3.2
Lee	-	0	1	1.8	4	6.6
Lexington	12	3.7	40	4.1	32	3.1
McCormick	1	12	1	5.5	5	24.3
Marion	2	5.0	11	9.4	17	12.6
Marlboro	1	3.3	4	4.4	14	14.8
Newberry	3	6.5	7	5.3	3	2.1
Oconee	1	1.2	8	3.5	5	2.0
Orangeburg	9	9.4	25	7.9	23	6.1
Pickens	2	1.5	15	4.1	23	6.4
Richland	20	4.2	73	5.1	64	4.3
Saluda	2	7.2	5	6.6	7	9.2
Spartanburg	11	3.1	22	2.1	48	4.3
Sumter	3	2.1	12	2.7	22	4.7
Union	1	3.1	2	2.1	2	2.0
Williamsburg	-	0	6	6.0	11	9.7
York	15	5.2	46	5.2	37	4.2

¹Rates per 1,000 live births. Rates calculated with 20 or fewer deaths are unreliable and should be used cautiously.

Table 6-A.
White¹ Neonatal Mortality and Neonatal Mortality Rates²
South Carolina and Each County, 2014, 2012-2014, 2009-2011
(Residence Data)

County of Residence	2014		2012-2014		2009-2011	
	Number	Rate	Number	Rate	Number	Rate
South Carolina	113	3.0	369	3.3	349	3.0
Abbeville	-	0	4	7.7	3	5.7
Aiken	4	3.2	12	3.2	6	1.5
Allendale	-	0	-	0	-	0
Anderson	5	2.8	16	3.0	21	3.9
Bamberg	-	0	-	0	1	5.8
Barnwell	-	0	1	2.4	1	2.4
Beaufort	5	3.4	10	2.2	9	1.9
Berkeley	4	2.1	9	1.6	13	2.3
Calhoun	-	0	-	0	-	0
Charleston	7	2.1	25	2.7	17	1.9
Cherokee	-	0	4	2.7	6	3.8
Chester	1	4.9	3	4.7	1	1.5
Chesterfield	4	13.2	10	10.8	8	8.7
Clarendon	1	6.5	1	2	1	2.1
Colleton	-	0	-	0	4	5.2
Darlington	2	5.0	3	2.5	7	5.8
Dillon	2	12.7	2	3.8	-	0
Dorchester	4	3.0	10	2.6	6	1.6
Edgefield	1	9.4	1	3.0	-	0
Fairfield	-	0	-	0	3	13.0
Florence	2	2.3	8	3.1	12	4.5
Georgetown	1	3.0	4	4.1	3	2.9
Greenville	11	2.3	45	3.2	39	2.8
Greenwood	-	0	7	4.4	10	5.9
Hampton	1	10.5	2	7.3	-	0
Horry	12	4.9	31	4.3	28	3.8
Jasper	1	4.6	4	7.2	2	3.5
Kershaw	3	5.6	8	5.2	3	1.9
Lancaster	2	2.8	10	5.0	7	3.8
Laurens	4	7.6	10	6.4	4	2.3
Lee	-	0	-	0	-	0
Lexington	10	3.9	27	3.5	20	2.5
McCormick	-	0	-	0	-	0
Marion	-	0	-	0	2	4.6
Marlboro	1	8.3	1	2.8	5	15.2
Newberry	3	10.9	4	5.1	2	2.3
Oconee	1	1.4	6	2.9	4	1.8
Orangeburg	-	0	3	3.3	2	1.8
Pickens	2	1.7	14	4.2	19	5.8
Richland	3	1.5	19	3.2	16	2.5
Saluda	1	5.2	2	3.6	4	7.1
Spartanburg	3	1.1	9	1.1	28	3.4
Sumter	-	0	4	1.9	8	3.7
Union	1	5.0	2	3.3	2	3.2
Williamsburg	-	0	3	9.0	-	0
York	11	5.3	35	5.5	21	3.3

¹Race of mother

²Rates per 1,000 live births. Rates calculated with 20 or fewer deaths are unreliable and should be used cautiously.

Table 6-B.

Black and Other¹ Neonatal Mortality and Neonatal Mortality Rates²
 South Carolina and Each County, 2014, 2012-2014, 2009-2011
 (Residence Data)

County of Residence	2014		2012-2014		2009-2011	
	Number	Rate	Number	Rate	Number	Rate
South Carolina	133	6.8	410	6.9	431	7.0
Abbeville	1	14.1	3	12.4	6	21.6
Aiken	4	6.3	15	8.2	9	4.7
Allendale	2	24.7	3	12.9	2	6.8
Anderson	6	12.1	11	7.6	15	10.3
Bamberg	2	19.8	4	12.7	3	8.4
Barnwell	-	0	4	8.2	2	4.4
Beaufort	3	5.3	7	4.1	9	5.2
Berkeley	7	9.5	25	11.5	10	4.8
Calhoun	-	0	-	0	2	9.1
Charleston	11	6.6	25	5.0	28	5.1
Cherokee	1	5.2	1	1.8	3	5.7
Chester	3	16.3	5	8.9	2	3.6
Chesterfield	-	0	3	4.7	12	18.0
Clarendon	1	5.0	7	11.5	2	3.2
Colleton	2	10.1	8	12.8	7	10.2
Darlington	1	2.5	5	4.3	10	8.2
Dillon	3	12.3	6	7.9	5	6.3
Dorchester	2	3.4	11	6.7	6	3.6
Edgefield	1	11.5	4	12.8	3	10.2
Fairfield	2	17.7	6	14.4	1	1.9
Florence	14	15.5	45	16.3	26	9.1
Georgetown	-	0	5	6.3	9	10.2
Greenville	10	6.6	26	5.9	30	6.8
Greenwood	-	0	7	6.6	10	9.4
Hampton	-	0	1	2.5	2	4.6
Horry	2	3.3	9	4.7	18	9.5
Jasper	-	0	-	0	2	4.2
Kershaw	2	9.5	4	6.8	2	3.1
Lancaster	4	13.7	6	7.3	7	8.9
Laurens	2	9.6	5	7.6	4	5.1
Lee	-	0	1	2.5	4	8.8
Lexington	2	3.1	13	6.5	12	6.0
McCormick	1	19.2	1	8.6	5	37.0
Marion	2	7.3	11	13.5	15	16.4
Marlboro	-	0	3	5.4	9	14.6
Newberry	-	0	3	5.6	1	1.9
Oconee	-	0	2	9.3	1	4.4
Orangeburg	9	13.5	22	9.8	21	7.9
Pickens	-	0	1	3.1	4	11.8
Richland	17	6.1	54	6.5	48	5.7
Saluda	1	11.8	3	14.9	3	15.5
Spartanburg	8	8.4	13	4.7	20	6.6
Sumter	3	3.8	8	3.4	14	5.7
Union	-	0	-	0	-	0
Williamsburg	-	0	3	4.5	11	13.3
York	4	4.9	11	4.5	16	6.9

¹Race of mother

²Rates per 1,000 live births. Rates calculated with 20 or fewer deaths are unreliable and should be used cautiously.

Table 7.
Postneonatal Mortality and Postneonatal Mortality Rates¹
South Carolina and Each County, 2014, 2012-2014, 2009-2011
(Residence Data)

County of Residence	2014		2012-2014		2009-2011	
	Number	Rate	Number	Rate	Number	Rate
South Carolina	126	2.2	417	2.4	503	2.9
Abbeville	2	8.1	3	3.9	4	5.0
Aiken	4	2.1	12	2.2	17	2.9
Allendale	-	0	-	0	1	2.8
Anderson	3	1.3	22	3.3	15	2.2
Bamberg	-	0	-	0	1	1.9
Barnwell	2	7.5	5	5.6	2	2.3
Beaufort	-	0	6	1.0	7	1.1
Berkeley	8	3.0	23	2.9	20	2.6
Calhoun	-	0	-	0	1	2.1
Charleston	6	1.2	20	1.4	45	3.1
Cherokee	1	1.4	6	3.0	9	4.3
Chester	1	2.6	4	3.3	2	1.6
Chesterfield	-	0	3	1.9	9	5.7
Clarendon	3	8.5	7	6.6	1	0.9
Colleton	1	2.2	5	3.7	6	4.1
Darlington	-	0	10	4.2	13	5.4
Dillon	1	2.5	3	2.3	4	3.0
Dorchester	3	1.6	6	1.1	15	2.7
Edgefield	2	10.3	3	4.6	-	0
Fairfield	-	0	1	1.5	2	2.7
Florence	8	4.5	23	4.3	27	4.9
Georgetown	-	0	4	2.3	5	2.6
Greenville	16	2.5	35	1.9	54	2.9
Greenwood	1	1.2	4	1.5	7	2.5
Hampton	2	9.1	4	5.9	-	0
Horry	7	2.3	24	2.6	27	2.9
Jasper	-	0	-	0	2	1.9
Kershaw	1	1.3	5	2.3	6	2.7
Lancaster	4	4.0	7	2.5	7	2.6
Laurens	1	1.4	6	2.7	5	2.0
Lee	-	0	2	3.6	3	5.0
Lexington	4	1.2	17	1.8	27	2.7
McCormick	-	0	2	11.0	-	0
Marion	4	9.9	4	3.4	6	4.5
Marlboro	3	9.9	3	3.3	-	0
Newberry	-	0	2	1.5	3	2.1
Oconee	-	0	3	1.3	5	2.0
Orangeburg	3	3.1	15	4.7	15	4.0
Pickens	4	3.1	10	2.8	9	2.5
Richland	14	2.9	47	3.3	35	2.4
Saluda	1	3.6	2	2.7	3	3.9
Spartanburg	9	2.5	22	2.1	37	3.3
Sumter	5	3.4	12	2.7	16	3.4
Union	-	0	2	2.1	5	5.1
Williamsburg	-	0	4	4.0	3	2.6
York	2	0.7	19	2.2	22	2.5

¹Rates per 1,000 live births. Rates calculated with 20 or fewer deaths are unreliable and should be used cautiously.

Table 7-A.

White¹ Postneonatal Mortality and Postneonatal Mortality Rates²
 South Carolina and Each County, 2014, 2012-2014, 2009-2011
 (Residence Data)

County of Residence	2014		2012-2014		2009-2011	
	Number	Rate	Number	Rate	Number	Rate
South Carolina	64	1.7	209	1.9	253	2.2
Abbeville	1	5.6	2	3.9	2	3.8
Aiken	3	2.4	8	2.2	8	2.1
Allendale	-	0	-	0	-	0
Anderson	2	1.1	14	2.6	9	1.7
Bamberg	-	0	-	0	-	0
Barnwell	1	7.8	1	2.4	-	0
Beaufort	-	0	6	1.3	4	0.9
Berkeley	3	1.6	13	2.3	13	2.3
Calhoun	-	0	-	0	1	3.9
Charleston	2	0.6	7	0.7	21	2.3
Cherokee	-	0	4	2.7	8	5.1
Chester	-	0	2	3.1	2	3.0
Chesterfield	-	0	2	2.2	6	6.6
Clarendon	2	13.0	4	8.8	-	0
Colleton	1	4.0	2	2.8	2	2.6
Darlington	-	0	4	3.3	6	5.0
Dillon	-	0	-	0	2	3.7
Dorchester	3	2.3	5	1.3	9	2.4
Edgefield	1	9.4	2	5.9	-	0
Fairfield	-	0	-	0	1	4.3
Florence	3	3.5	7	2.8	11	4.1
Georgetown	-	0	2	2.1	-	0
Greenville	10	2.1	21	1.5	22	1.6
Greenwood	-	0	1	0.6	3	1.8
Hampton	-	0	1	3.6	-	0
Horry	7	2.9	14	1.9	17	2.3
Jasper	-	0	-	0	-	0
Kershaw	1	1.9	4	2.6	4	2.5
Lancaster	2	2.8	3	1.5	4	2.2
Laurens	1	1.9	5	3.2	4	2.3
Lee	-	0	-	0	1	6.8
Lexington	3	1.2	9	1.2	18	2.2
McCormick	-	0	-	0	-	0
Marion	1	7.8	1	2.8	3	6.9
Marlboro	2	16.5	2	5.7	-	0
Newberry	-	0	1	1.3	1	1.1
Oconee	-	0	3	1.4	5	2.2
Orangeburg	1	3.5	4	4.3	3	2.7
Pickens	4	3.4	10	3.0	9	2.8
Richland	1	0.5	9	1.5	5	0.8
Saluda	1	5.2	1	1.8	2	3.5
Spartanburg	5	1.9	16	2.0	27	3.3
Sumter	2	3.0	3	1.4	6	2.7
Union	-	0	2	3.3	2	3.2
Williamsburg	-	0	1	3.0	-	0
York	1	0.5	13	2.0	12	1.9

¹Race of mother

²Rates per 1,000 live births. Rates calculated with 20 or fewer deaths are unreliable and should be used cautiously.

Table 7-B.

Black and Other¹ Postneonatal Mortality and Postneonatal Mortality Rates²
 South Carolina and Each County, 2014, 2012-2014, 2009-2011
 (Residence Data)

County of Residence	2014		2012-2014		2009-2011	
	Number	Rate	Number	Rate	Number	Rate
South Carolina	62	3.2	208	3.5	250	4.1
Abbeville	1	14.1	1	4.1	2	7.2
Aiken	1	1.6	4	2.2	9	4.7
Allendale	-	0	-	0	1	3.4
Anderson	1	2.0	8	5.5	6	4.1
Bamberg	-	0	-	0	1	2.8
Barnwell	1	7.3	4	8.2	2	4.4
Beaufort	-	0	-	0	3	1.7
Berkeley	5	6.8	10	4.6	7	3.4
Calhoun	-	0	-	0	-	0
Charleston	4	2.4	13	2.6	24	4.4
Cherokee	1	5.2	2	3.6	1	1.9
Chester	1	5.4	2	3.6	-	0
Chesterfield	-	0	1	1.6	3	4.5
Clarendon	1	5.0	3	4.9	1	1.6
Colleton	-	0	3	4.8	4	5.9
Darlington	-	0	6	5.1	7	5.7
Dillon	1	4.1	3	3.9	2	2.5
Dorchester	-	0	1	0.6	6	3.6
Edgefield	1	11.5	1	3.2	-	0
Fairfield	-	0	1	2.4	1	1.9
Florence	5	5.5	16	5.8	16	5.6
Georgetown	-	0	2	2.5	5	5.7
Greenville	6	4.0	14	3.2	32	7.3
Greenwood	1	2.9	3	2.8	4	3.8
Hampton	2	16.1	3	7.5	-	0
Horry	-	0	10	5.2	10	5.3
Jasper	-	0	-	0	2	4.2
Kershaw	-	0	1	1.7	2	3.1
Lancaster	2	6.8	4	4.9	3	3.8
Laurens	-	0	1	1.5	1	1.3
Lee	-	0	2	5.1	2	4.4
Lexington	1	1.5	8	4.0	9	4.5
McCormick	-	0	2	17.2	-	0
Marion	3	10.9	3	3.7	3	3.3
Marlboro	1	5.5	1	1.8	-	0
Newberry	-	0	1	1.9	2	3.7
Oconee	-	0	-	0	-	0
Orangeburg	2	3.0	11	4.9	12	4.5
Pickens	-	0	-	0	-	0
Richland	13	4.7	38	4.6	30	3.6
Saluda	-	0	1	5.0	1	5.2
Spartanburg	4	4.2	6	2.1	10	3.3
Sumter	3	3.8	9	3.8	10	4.1
Union	-	0	-	0	3	8.6
Williamsburg	-	0	3	4.5	3	3.6
York	1	1.2	6	2.5	10	4.3

¹Race of mother²Rates per 1,000 live births. Rates calculated with 20 or fewer deaths are unreliable and should be used cautiously.

Table 8.
Leading Causes of Infant Death by Age at Death
South Carolina, 2014
(Residence Data)

Cause of Infant Death (ICD-10 Codes)	Total	Under 1 Day	1-6 Days	7-27 Days	Neonatal (<28 days)	Post-Neonatal (28-364 days)
Total Infant Deaths	372	150	43	53	246	126
Disorders related to short gestation and low birthweight, NEC (P07)	71	64	5	1	70	1
Congenital malformations, deformations, etc. (Q00-Q99)	56	25	7	12	44	12
Accidents (V01-X59, Y85-Y86)	40	-	-	2	2	38
Sudden infant death syndrome (R95)	31	-	-	4	4	27
Fetus and newborn affected by maternal complications of pregnancy (P01)	18	17	-	1	18	-
Newborn affected by complication of placenta, etc. (P02)	16	13	3	-	16	-
Necrotizing enterocolitis of newborn (P77)	9	-	2	7	9	-
Bacterial sepsis of newborn (P36)	8	1	4	2	7	1
Diseases of circulatory system (I00-I99)	6	-	-	-	-	6
Neonatal hemorrhage (P50-P52, P54)	6	1	2	3	6	-
All other causes	111	29	20	21	70	41

Table 8a.
Leading Causes of White¹ Infant Death by Age at Death
South Carolina, 2014
(Residence Data)

Cause of Infant Death (ICD-10 Codes)	Total	Under 1 Day	1-6 Days	7-27 Days	Neonatal (<28 days)	Post-Neonatal (28-364 days)
Total White Infant Deaths	173	53	23	35	111	62
Congenital malformations, deformations, etc. (Q00-Q99)	37	15	5	10	30	7
Accidents (V01-X59, Y85-Y86)	24	-	-	2	2	22
Disorders related to short gestation and low birthweight, NEC (P07)	23	20	2	-	22	1
Sudden infant death syndrome (R95)	13	-	-	1	1	12
Fetus and newborn affected by maternal complications of pregnancy (P01)	5	5	-	-	5	-
Newborn affected by complication of placenta, etc. (P02)	5	5	-	-	5	-
Necrotizing enterocolitis of newborn (P77)	5	-	1	4	5	-
Diseases of circulatory system (I00-I99)	3	-	-	-	-	3
Intrauterine hypoxia and birth asphyxia (P20-P21)	3	-	-	3	3	-
Bacterial sepsis of newborn (P36)	3	1	2	-	3	-
All other causes	52	7	13	15	35	17

¹ Race of child

Table 8b.
Leading Causes of Black and Other¹ Infant Death by Age at Death
South Carolina, 2014
(Residence Data)

Cause of Infant Death (ICD-10 Codes)	Total	Under 1 Day	1-6 Days	7-27 Days	Neonatal (<28 days)	Post-Neonatal (28-364 days)
Total Black and Other Infant Deaths	199	97	20	18	135	64
Disorders related to short gestation and low birthweight, NEC (P07)	48	44	3	1	48	-
Congenital malformations, deformations, etc. (Q00-Q99)	19	10	2	2	14	5
Sudden infant death syndrome (R95)	18	-	-	3	3	15
Accidents (V01-X59, Y85-Y86)	16	-	-	-	-	16
Fetus and newborn affected by maternal complications of pregnancy (P01)	13	12	-	1	13	-
Newborn affected by complication of placenta, etc. (P02)	11	8	3	-	11	-
Atelectasis (P28.0-P28.1)	5	5	-	-	5	-
Bacterial sepsis of newborn (P36)	5	-	2	2	4	1
Neonatal hemorrhage (P50-P52, P54)	4	1	1	2	4	-
Necrotizing enterocolitis of newborn (P77)	4	-	1	3	4	-
All other causes	56	17	8	4	29	27

¹ Race of child

Table 8c.
 Percent Changes of Leading Causes of Infant Death
 from 2013 to 2014, South Carolina

Cause of Infant Death Ranked by 2014 Data (ICD-10 Codes)	2013	2014	% Change
Total Infant Deaths	389	372	-4.4%
Disorders related to short gestation and low birthweight, NEC (P07)	76	71	-6.6%
Congenital malformations, deformations, etc. (Q00-Q99)	73	56	-23.3%
Accidents (V01-X59, Y85-Y86)	23	40	73.9%
Sudden infant death syndrome (R95)	35	31	-11.4%
Fetus and newborn affected by maternal complications of pregnancy (P01)	20	18	-10.0%
Newborn affected by complication of placenta, etc. (P02)	12	16	33.3%
Necrotizing enterocolitis of newborn (P77)	9	9	0.0%
Bacterial sepsis of newborn (P36)	11	8	-27.3%
Diseases of circulatory system (I00-I99)	9	6	-33.3%
Neonatal hemorrhage (P50-P52, P54)	4	6	50.0%
All other causes	117	111	-5.1%

Table 9.
Breakdown of Infant Deaths due to Accidents
South Carolina, 2008-2014
(Residence Data)

	2008	2009	2010	2011	2012	2013	2014	Total (2008-2014)
Accidental suffocation and strangulation in bed (W75, W84)	37	22	25	21	39	21	31	196
Other accidental threats to breathing	2	3	2	2	0	2	3	14
Transportation	1	5	1	3	1	0	3	14
Drowning	0	0	0	1	0	0	1	2
Poison	0	1	0	1	0	0	1	3
Other accidents	1	2	4	2	1	0	1	11
Total	41	33	32	30	41	23	40	240

Table 10.
Breakdown of Sudden Unexplained Infant Deaths
South Carolina, 2008-2014
(Residence Data)

	2008	2009	2010	2011	2012	2013	2014	Total (2008-2014)
Accidental suffocation and strangulation in bed (W75, W84)	37	22	25	21	39	21	31	196
Sudden Infant Death Syndrome (R95)	57	44	49	45	33	35	31	294
Hanging, strangulation, and suffocation, undetermined intent (Y20)	4	5	4	2	1	9	4	29
Other ill-defined and unspecified causes of mortality (R99)	5	8	8	10	12	6	11	60
Total	103	79	86	78	85	71	77	579

Table 11.
Leading Causes of Infant Death and Mortality Rates*,
South Carolina, 2012-2014
(Residence Data)

Table 11. South Carolina Infant Death, Resident Data, 2012-2014, All races

Rank	Cause of death	Number	Mortality rate*
Total Infant Deaths.....	1196	7.0
1	Disorders related to short gestation and low birthweight (P07).....	212	1.2
2	Congenital malformations, deformations, etc. (Q00-Q99).....	201	1.2
3	Accidents (V01-X59,Y85-Y86).....	104	0.6
4	Sudden infant death syndrome (R95).....	99	0.6
5	Fetus and newborn affected by maternal complications of pregnancy (P01)...	60	0.3
6	Newborn affected by complications of placenta, etc. (P02).....	49	0.3
7	Bacterial sepsis of newborn (P36).....	31	0.2
8	Respiratory distress of newborn (P22).....	28	0.2
9	Disease of circulatory system (I00-I99).....	27	0.2
10	Necrotizing enterocolitis of newborn (P77).....	27	0.2
All Other Causes.....	358	2.1

Table 11-A. South Carolina Infant death, Resident Data, 2012-2014, White

Rank	Cause of death	Number	Mortality rate*
All White Infant Deaths.....	564	5.0
1	Congenital malformations, deformations, etc. (Q00-Q99).....	122	1.1
2	Disorders related to short gestation and low birthweight (P07).....	76	0.7
3	Accidents (V01-X59, Y85-Y86).....	63	0.6
4	Sudden infant death syndrome (R95).....	43	0.4
5	Newborn affected by complications of placenta, etc. (P02).....	22	0.2
6	Fetus and newborn affected by maternal complications of pregnancy (P01)...	18	0.2
7	Bacterial sepsis of newborn (P36).....	13	0.1
8	Disease of circulatory system (I00-I99).....	11	0.1
9	Intrauterine hypoxia and birth asphyxia (P20-P21).....	11	0.1
10	Respiratory distress of newborn (P22).....	11	0.1
All Other Causes.....	174	1.6

Table 11-B. South Carolina Infant death, Resident Data, 2012-2014, Black and Others

Rank	Cause of death	Number	Mortality rate*
All Black And Other Infant Deaths.....	632	10.7
1	Disorders related to short gestation and low birthweight (P07).....	136	2.3
2	Congenital malformations, deformations, etc. (Q00-Q99).....	79	1.3
3	Sudden infant death syndrome (R95).....	56	0.9
4	Fetus and newborn affected by maternal complications of pregnancy (P01)...	42	0.7
5	Accidents (V01-X59,Y85-Y86).....	41	0.7
6	Newborn affected by complications of placenta, etc. (P02).....	27	0.5
7	Bacterial sepsis of newborn (P36).....	18	0.3
8	Respiratory distress of newborn (P22).....	17	0.3
9	Necrotizing enterocolitis of newborn (P77).....	17	0.3
10	Disease of circulatory system (I00-I99).....	16	0.3
All Other Causes.....	183	3.1

* Rates are per 1,000 live births.

Table 12.

Comparison of Characteristics for All Live Births, by Race¹
 Z-tests for differences in proportions³
 South Carolina, 2013 to 2014
 (Residence Data)

	2013		2014		Z-TEST	P-VALUE
	Percent	Number	Percent	Number		
MOTHER < 18 YEARS						
TOTAL ²	2.31	1,313	2.14	1,235	-1.9591	0.0501
White	1.89	704	1.81	685	-0.8883	0.3744
Black & Other	3.12	608	2.79	549	-1.8903	0.0587
MARITAL STATUS: UNMARRIED						
TOTAL ²	47.15	26,754	47.19	27,195	0.1311	0.8957
White	33.19	12,340	33.68	12,771	1.4044	0.1602
Black & Other	73.80	14,401	73.30	14,411	-1.1240	0.2610
OBESE PRIOR TO PREGNANCY						
TOTAL ²	27.76	15,751	28.65	16,509	3.3350	0.0009
White	22.81	8,480	23.70	8,988	2.8891	0.0039
Black & Other	37.22	7,262	38.21	7,513	2.0386	0.0415
TOBACCO USE DURING PREGNANCY						
TOTAL ²	10.91	6,190	11.15	6,428	1.3217	0.1863
White	12.91	4,801	13.18	4,997	1.0691	0.2850
Black & Other	7.09	1,384	7.26	1,427	0.6353	0.5252
HISPANIC MOTHER						
TOTAL ²	7.68	4,360	7.93	4,568	1.5286	0.1264
White	11.01	4,095	11.16	4,232	0.6309	0.5281
Black & Other	1.36	265	1.71	336	2.8259	0.0047
VERY LOW BIRTHWEIGHT						
TOTAL ²	1.88	1,069	1.78	1,026	-1.3069	0.1913
White	1.27	473	1.17	444	-1.2663	0.2054
Black & Other	3.04	594	2.95	579	-0.5752	0.5652
LOW BIRTHWEIGHT						
TOTAL ²	9.69	5,498	9.45	5,444	-1.3969	0.1624
White	7.49	2,785	7.17	2,719	-1.6897	0.0911
Black & Other	13.87	2,706	13.83	2,718	-0.1222	0.9027

¹Race of mother²Includes unknown races³Proportions are expressed as percentages

Table 12. (continued)
 Comparison of Characteristics for All Live Births, by Race¹
 Z-tests for differences in proportions³
 South Carolina, 2013 to 2014
 (Residence Data)

	2013		2014		Z-TEST	P-VALUE
	Percent	Number	Percent	Number		

PREMATURE BIRTHS (< 37 WEEKS)						
TOTAL ²	11.13	6,317	10.78	6,213	-1.9056	0.0567
White	9.66	3,591	9.40	3,564	-1.2190	0.2228
Black & Other	13.93	2,718	13.44	2,643	-1.3983	0.1620

VERY PREMATURE BIRTHS (< 32 WEEKS)						
TOTAL ²	2.09	1,185	1.95	1,124	-1.6594	0.0970
White	1.49	553	1.36	516	-1.4670	0.1424
Black & Other	3.23	630	3.08	605	-0.8569	0.3915

PREMATURE 32-36 WEEKS BIRTHS						
TOTAL ²	9.04	5,132	8.83	5,089	-1.2683	0.2047
White	8.17	3,038	8.04	3,048	-0.6747	0.4999
Black & Other	10.70	2,088	10.37	2,038	-1.0778	0.2811

KOTELCHUCK INDEX: ADEQUATE, ADEQUATE PLUS						
TOTAL ²	74.45	42,245	74.63	43,011	0.7064	0.4799
White	76.92	28,596	77.14	29,252	0.7059	0.4802
Black & Other	69.82	13,624	69.86	13,735	0.0917	0.9269

KOTELCHUCK INDEX: INADEQUATE						
TOTAL ²	18.40	10,438	18.84	10,857	1.9270	0.0540
White	15.71	5,839	16.23	6,154	1.9512	0.0510
Black & Other	23.50	4,585	23.88	4,695	0.8933	0.3717

< 5 PRENATAL CARE VISITS						
TOTAL ²	5.03	2,854	5.12	2,953	0.7262	0.4677
White	4.06	1,511	4.27	1,618	1.3865	0.1656
Black & Other	6.85	1,337	6.77	1,330	-0.3412	0.7330

PRENATAL CARE BEGAN FIRST TRIMESTER						
TOTAL ²	70.02	39,733	70.30	40,516	1.0337	0.3013
White	73.08	27,168	73.62	27,918	1.6739	0.0941
Black & Other	64.28	12,543	63.97	12,577	-0.6348	0.5255

¹Race of mother

²Includes unknown races

³Proportions are expressed as percentages

Table 12-A.

Comparison of Characteristics of Infants who Died, by Race¹
 Z-tests for differences in proportions³
 South Carolina, 2013 to 2014
 (Residence Data)

	2013		2014		Z-TEST	P-VALUE
	Percent	Number	Percent	Number		

MOTHER < 18 YEARS						
TOTAL ²	3.34	13	2.69	10	-0.5266	0.5985
White	4.41	9	2.82	5	-0.8211	0.4116
Black & Other	2.16	4	2.56	5	0.2575	0.7968

MARITAL STATUS: UNMARRIED						
TOTAL ²	58.61	228	62.90	234	1.2117	0.2256
White	45.59	93	46.33	82	0.1445	0.8851
Black & Other	72.97	135	77.95	152	1.1276	0.2595

OBESE PRIOR TO PREGNANCY						
TOTAL ²	33.16	129	37.37	139	1.2136	0.2249
White	27.94	57	31.64	56	0.7880	0.4307
Black & Other	38.92	72	42.56	83	0.7227	0.4699

TOBACCO USE DURING PREGNANCY						
TOTAL ²	17.48	68	19.62	73	0.7606	0.4469
White	24.02	49	29.38	52	1.1820	0.2372
Black & Other	10.27	19	10.77	21	0.1584	0.8741

HISPANIC MOTHER						
TOTAL ²	6.43	25	5.65	21	-0.4522	0.6511
White	11.27	23	11.86	21	0.1797	0.8574
Black & Other	1.08	2	0.00	0	-1.4558	0.1455

VERY LOW BIRTHWEIGHT						
TOTAL ²	54.50	212	52.96	197	-0.4264	0.6698
White	48.04	98	38.42	68	-1.8889	0.0589
Black & Other	61.62	114	66.15	129	0.9197	0.3577

LOW BIRTHWEIGHT						
TOTAL ²	70.69	275	66.13	246	-1.3548	0.1755
White	65.20	133	54.80	97	-2.0686	0.0386
Black & Other	76.76	142	76.41	149	-0.0797	0.9365

¹Race of mother

²Includes unknown races

³Proportions are expressed as percentages

Table 12-A. (continued)
 Comparison of Characteristics of Infants who Died, by Race¹
 Z-tests for differences in proportions³
 South Carolina, 2013 to 2014
 (Residence Data)

	2013		2014		Z-TEST	P-VALUE
	Percent	Number	Percent	Number		

PREMATURE BIRTHS (< 37 WEEKS)						
TOTAL ²	70.44	274	67.47	251	-0.8836	0.3769
White	66.67	136	57.63	102	-1.8174	0.0692
Black & Other	74.59	138	76.41	149	0.4115	0.6807

VERY PREMATURE BIRTHS (< 32 WEEKS)						
TOTAL ²	56.04	218	54.30	202	-0.4825	0.6294
White	50.00	102	40.11	71	-1.9332	0.0532
Black & Other	62.70	116	67.18	131	0.9145	0.3605

PREMATURE 32-36 WEEKS BIRTHS						
TOTAL ²	14.40	56	13.17	49	-0.4893	0.6246
White	16.67	34	17.51	31	0.2193	0.8264
Black & Other	11.89	22	9.23	18	-0.8449	0.3982

KOTELCHUCK INDEX: ADEQUATE, ADEQUATE PLUS						
TOTAL ²	66.32	258	62.10	231	-1.2163	0.2239
White	63.73	130	61.58	109	-0.4316	0.6660
Black & Other	69.19	128	62.56	122	-1.3606	0.1736

KOTELCHUCK INDEX: INADEQUATE						
TOTAL ²	23.14	90	27.96	104	1.5253	0.1272
White	25.49	52	29.94	53	0.9703	0.3319
Black & Other	20.54	38	26.15	51	1.2914	0.1966

< 5 PRENATAL CARE VISITS						
TOTAL ²	26.48	103	29.84	111	1.0307	0.3027
White	24.02	49	28.81	51	1.0607	0.2888
Black & Other	29.19	54	30.77	60	0.3359	0.7369

PRENATAL CARE BEGAN FIRST TRIMESTER						
TOTAL ²	59.38	231	55.38	206	-1.1174	0.2638
White	60.78	124	59.32	105	-0.2907	0.7713
Black & Other	57.84	107	51.79	101	-1.1829	0.2368

¹Race of mother

²Includes unknown races

³Proportions are expressed as percentages

Table 13.
Multiple Births Trends,
South Carolina, 2010-2014
(Residence Data)

Year	Singleton Births	Singleton Deaths	Infant Mortality Rate*	Twin Births***	Twin Deaths	Infant Mortality Rate*	Higher Order (3+) Births	Higher Order (3+) Deaths	Infant Mortality Rate*	Total Births**	Total Deaths**	Infant Mortality Rate*
2010	56,393	382	6.8	1,867	43	23.0	65	5	76.9	58,325	430	7.4
2011	55,343	358	6.5	1,915	65	33.9	80	0	0.0	57,338	423	7.4
2012	55,122	380	6.9	1,918	54	28.2	58	1	17.2	57,100	435	7.6
2013	54,668	326	6.0	2,003	55	27.5	72	6	83.3	56,743	389	6.9
2014	55,548	324	5.8	2,030	44	21.7	53	4	75.5	57,631	372	6.5
Total	277,074	1,770	6.4	9,733	261	26.8	328	16	48.8	287,137	2,049	7.1

* Rates are per 1,000 births. Rates calculated with 20 or fewer deaths are unreliable and should be used cautiously

** Includes Unknown Birth Number

*** Twin births do not include twin fetal deaths

Table 14.
 Infant Mortality Rates¹ by Race² and Birthweight³ Group
 South Carolina
 2012, 2013, and 2014
 (Residence Data)

Infant Mortality for Very Low Birthweight (0-1499 grams)									
	Total			White			Black & Other		
Year	Number of Live Birth	Number of Infant Death	Rate	Number of Live Birth	Number of Infant Death	Rate	Number of Live Birth	Number of Infant Death	Rate
2012	1,023*	229	223.9	422	83	196.7	600	146	243.3
2013	1,069*	212	198.3	473	98	207.2	594	114	191.9
2014	1,026*	197	192.0	444	68	153.2	579	129	222.8

Infant Mortality for Intermediate Low Birthweight (1500-2499 grams)									
	Total			White			Black & Other		
Year	Number of Live Birth	Number of Infant Death	Rate	Number of Live Birth	Number of Infant Death	Rate	Number of Live Birth	Number of Infant Death	Rate
2012	4,430*	53	12.0	2,261	29	12.8	2,168	24	11.1
2013	4,429*	63	14.2	2,312	35	15.1	2,112	28	13.3
2014	4,418*	49	11.1	2,275	29	12.7	2,139	20	9.4

Infant Mortality for Normal Birthweight (2500+ grams)									
	Total			White			Black & Other		
Year	Number of Live Birth	Number of Infant Death	Rate	Number of Live Birth	Number of Infant Death	Rate	Number of Live Birth	Number of Infant Death	Rate
2012	51,608*	151	2.9	34,392	84	2.4	17,174	67	3.9
2013	51,195*	110	2.1	34,364	70	2.0	16,788	40	2.4
2014	52,167*	122	2.3	35,197	78	2.2	16,935	44	2.6

¹Rates per 1,000 live births

²Race of mother

³Does not include missing birthweights

*Includes unknown race

Table 14-A.
 Neonatal Mortality Rates¹ by Race² and Birthweight³ Group
 South Carolina
 2012, 2013, and 2014
 (Residence Data)

Neonatal Mortality for Very Low Birthweight (0-1499 grams)									
	Total			White			Black & Other		
Year	Number of Live Birth	Number of Infant Death	Rate	Number of Live Birth	Number of Infant Death	Rate	Number of Live Birth	Number of Infant Death	Rate
2012	1,023*	187	182.8	422	72	170.6	600	115	191.7
2013	1,069*	183	171.2	473	86	181.8	594	97	163.3
2014	1,026*	173	168.6	444	60	135.1	579	113	195.2

Neonatal Mortality for Intermediate Low Birthweight (1500-2499 grams)									
	Total			White			Black & Other		
Year	Number of Live Birth	Number of Infant Death	Rate	Number of Live Birth	Number of Infant Death	Rate	Number of Live Birth	Number of Infant Death	Rate
2012	4,430*	29	6.5	2,261	19	8.4	2,168	10	4.6
2013	4,429*	38	8.6	2,312	23	9.9	2,112	15	7.1
2014	4,418*	32	7.2	2,275	22	9.7	2,139	10	4.7

Neonatal Mortality for Normal Birthweight (2500+ grams)									
	Total			White			Black & Other		
Year	Number of Live Birth	Number of Infant Death	Rate	Number of Live Birth	Number of Infant Death	Rate	Number of Live Birth	Number of Infant Death	Rate
2012	51,608*	53	1.0	34,392	27	0.8	17,174	26	1.5
2013	51,195*	39	0.8	34,364	29	0.8	16,788	10	0.6
2014	52,167*	40	0.8	35,197	31	0.9	16,935	9	0.5

¹Rates per 1,000 live births

²Race of mother

³Does not include missing birthweights

*Includes unknown race

Table 14-B.
 Postneonatal Mortality Rates¹ by Race² and Birthweight³ Group
 South Carolina
 2012, 2013, and 2014
 (Residence Data)

Postneonatal Mortality for Very Low Birthweight (0-1499 grams)									
	Total			White			Black & Other		
Year	Number of Live Birth	Number of Infant Death	Rate	Number of Live Birth	Number of Infant Death	Rate	Number of Live Birth	Number of Infant Death	Rate
2012	1,023*	42	41.1	422	11	26.1	600	31	51.7
2013	1,069*	29	27.1	473	12	25.4	594	17	28.6
2014	1,026*	24	23.4	444	8	18.0	579	16	27.6

Postneonatal Mortality for Intermediate Low Birthweight (1500-2499 grams)									
	Total			White			Black & Other		
Year	Number of Live Birth	Number of Infant Death	Rate	Number of Live Birth	Number of Infant Death	Rate	Number of Live Birth	Number of Infant Death	Rate
2012	4,430*	24	5.4	2,261	10	4.4	2,168	14	6.5
2013	4,429*	25	5.6	2,312	12	5.2	2,112	13	6.2
2014	4,418*	17	3.8	2,275	7	3.1	2,139	10	4.7

Postneonatal Mortality for Normal Birthweight (2500+ grams)									
	Total			White			Black & Other		
Year	Number of Live Birth	Number of Infant Death	Rate	Number of Live Birth	Number of Infant Death	Rate	Number of Live Birth	Number of Infant Death	Rate
2012	51,608*	98	1.9	34,392	57	1.7	17,174	41	2.4
2013	51,195*	71	1.4	34,364	41	1.2	16,788	30	1.8
2014	52,167*	82	1.6	35,197	47	1.3	16,935	35	2.1

¹Rates per 1,000 live births

²Race of mother

³Does not include missing birthweights

*Includes unknown race

Figure 1
Percentage of Infant Deaths by Birthweight Group
South Carolina, 2012-2014 Residence Data

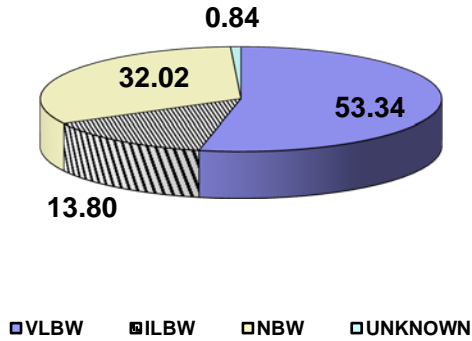


Figure 1-A
Percentage of White Infant Deaths by Birthweight Group
South Carolina, 2012-2014 Residence Data

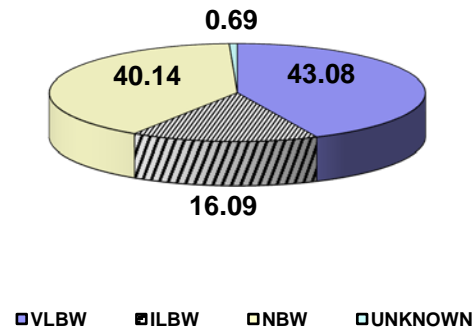


Figure 1-B
Percentage of Black and Other Infant Deaths by Birthweight Group
South Carolina, 2012-2014 Residence Data

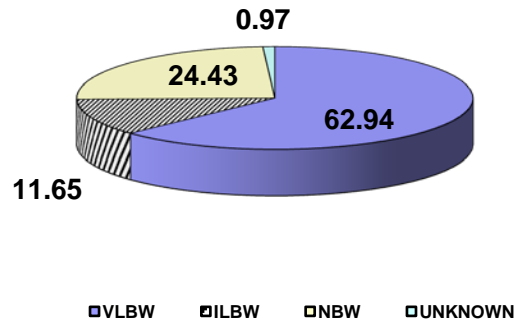
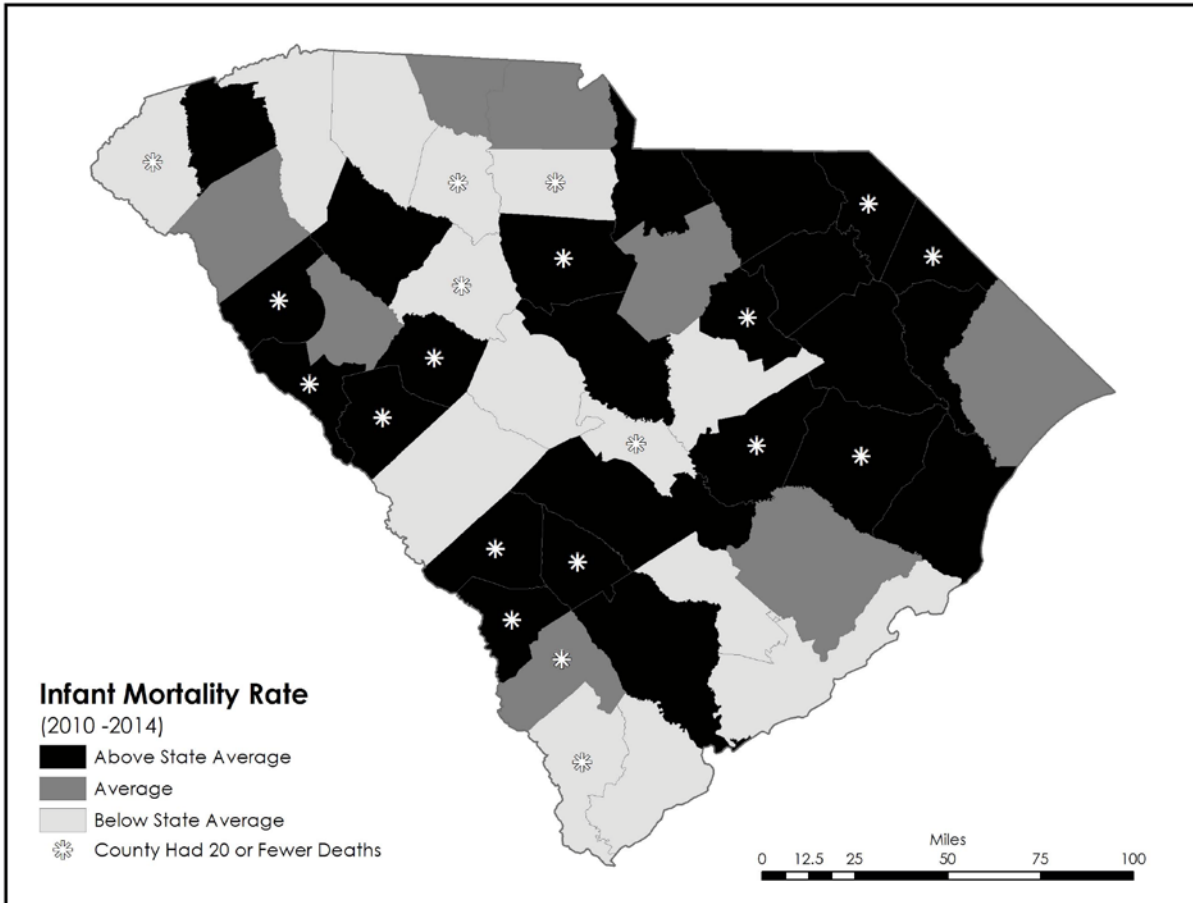


Figure 2.
Five Year Infant Mortality Rates by County
South Carolina
2010-2014
(Residence Data)



NOTE: Counties with rates calculated with 20 or fewer deaths are unreliable and should be used cautiously.

Above State Average indicates a rate greater than 7.4.
State Average indicates a rate between 6.8 and 7.4 inclusive.
Below State Average indicates a rate lower than 6.8.
Rate per 1,000 live births