



# **Infant Mortality and Selected Birth Characteristics**



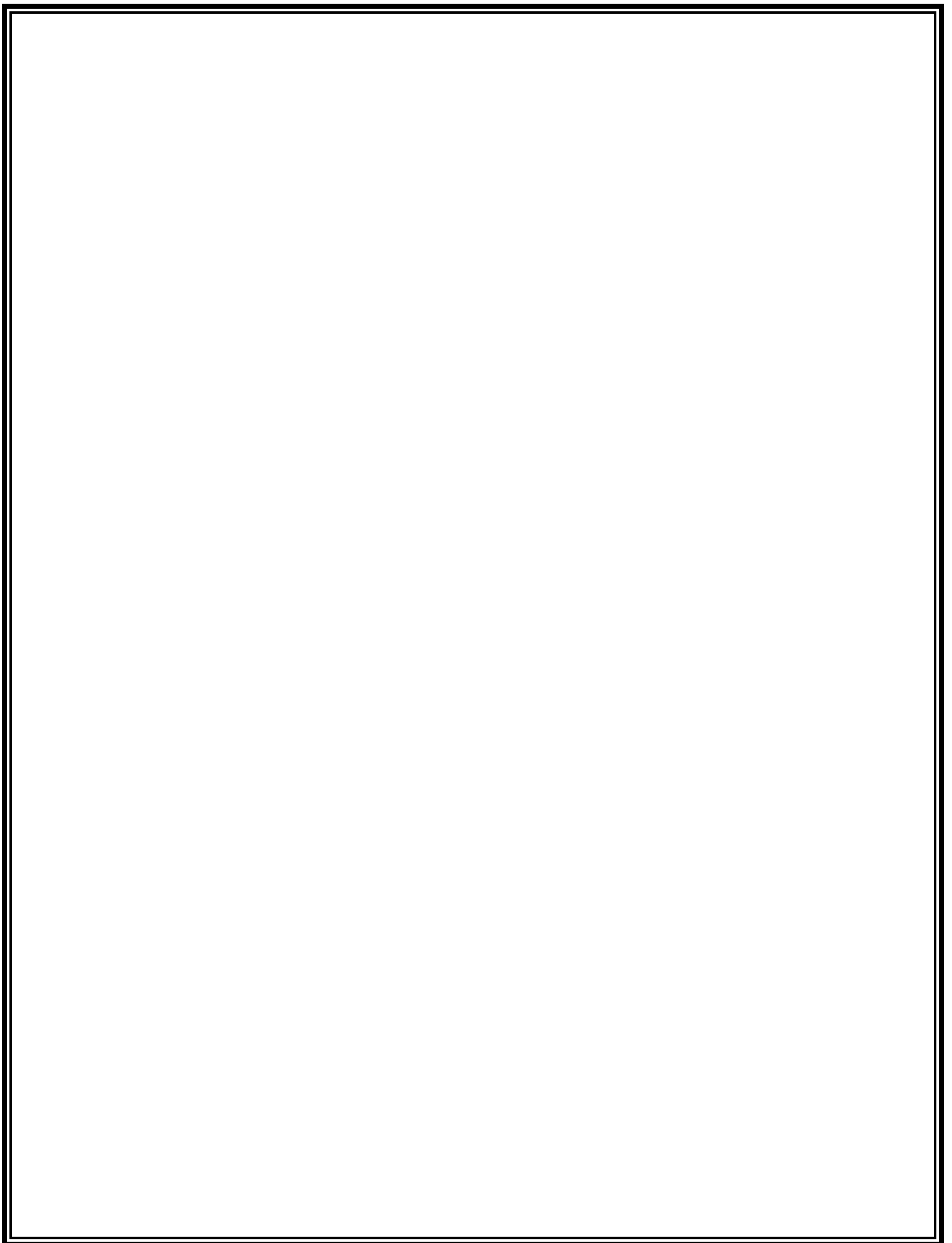
## **2015 South Carolina Residence Data**

**October 2016**

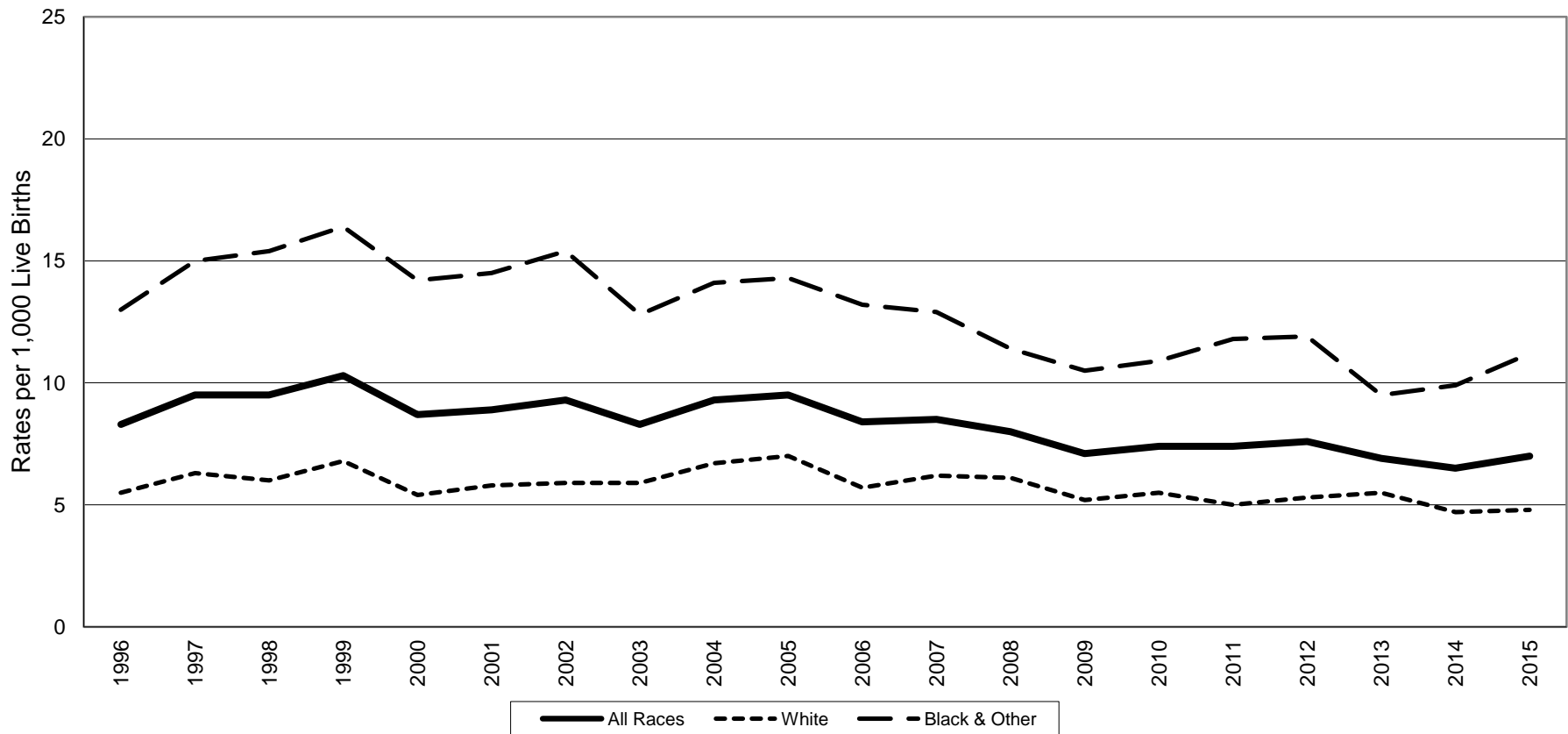
**South Carolina Department of Health and Environmental Control  
Office of Public Health Statistics and Information Services  
Division of Biostatistics  
2600 Bull Street  
Columbia, SC 29201**

**Phone: (803)898-3649  
Fax: (803)898-3661**





## South Carolina Infant Mortality Rates<sup>1</sup> by Race<sup>2</sup> Residence Data, 1996-2015



	1996	1997	1998	1999	2000	2001	2002	2003	2004	2005	2006	2007	2008	2009	2010	2011	2012	2013	2014	2015
All Races	8.3	9.5	9.5	10.3	8.7	8.9	9.3	8.3	9.3	9.5	8.4	8.5	8.0	7.1	7.4	7.4	7.6	6.9	6.5	7.0
White	5.5	6.3	6.0	6.8	5.4	5.8	5.9	5.9	6.7	7.0	5.7	6.2	6.1	5.2	5.5	5.0	5.3	5.5	4.7	4.8
Black & Other	13.0	15.0	15.4	16.4	14.2	14.5	15.4	12.8	14.1	14.3	13.2	12.9	11.4	10.5	10.9	11.8	11.9	9.5	9.9	11.2

<sup>1</sup>Rates per 1,000 live births

<sup>2</sup>Race of mother

**Table 1.**  
 Infant Mortality Rates<sup>1</sup> with 95% Confidence Intervals<sup>2</sup>  
 South Carolina, 1996-2015  
 (Residence Data)

Year	Number of Live Births	Number of Infant Deaths	Infant Mortality Rate	95% Confidence Intervals
1996	51,105	424	8.3	(7.5, 9.1)
1997	52,205	494	9.5	(8.7, 10.3)
1998	53,833	511	9.5	(8.7, 10.3)
1999	54,706	564	10.3	(9.4, 11.2)
2000	55,964	488	8.7	(7.9, 9.5)
2001	55,748	496	8.9	(8.1, 9.7)
2002	54,453	507	9.3	(8.5, 10.1)
2003	55,461	463	8.3	(7.5, 9.1)
2004	56,543	524	9.3	(8.5, 10.1)
2005	57,538	549	9.5	(8.7, 10.3)
2006	62,191	520	8.4	(7.6, 9.1)
2007	62,933	538	8.5	(7.8, 9.3)
2008	63,077	504	8.0	(7.3, 8.7)
2009	60,682	430	7.1	(6.4, 7.8)
2010	58,325	430	7.4	(6.7, 8.1)
2011	57,338	423	7.4	(6.7, 8.1)
2012	57,100	435	7.6	(6.9, 8.3)
2013	56,743	389	6.9	(6.2, 7.6)
2014	57,631	372	6.5	(5.8, 7.2)
2015	58,135	405	7.0	(6.3, 7.7)

**Table 2.**  
 Infant Mortality Rates<sup>1</sup> with 95% Confidence Intervals<sup>2</sup>  
 South Carolina  
 1996-2000, 2001-2005, 2006-2010, 2011-2015  
 (Residence Data)

Years	Number of Live Births	Number of Infant Deaths	Infant Mortality Rate	95% Confidence Intervals
1996-2000	267,813	2,481	9.3	(8.9, 9.6)
2001-2005	279,743	2,539	9.1	(8.7, 9.4)
2006-2010	307,208	2,422	7.9	(7.6, 8.2)
2011-2015	286,947	2,024	7.1	(6.7, 7.4)

<sup>1</sup>Rates per 1,000 live births

<sup>2</sup>  $r \pm 61.981 (r/n)^{1/2}$ , where r = infant mortality rate and n = number of live births

**Table 3.**  
**Infant, Neonatal and Postneonatal Mortality and Mortality Rates<sup>1</sup> by Race<sup>2</sup>**  
**South Carolina**  
**2011, 2012, 2013, 2014 and 2015**  
**(Residence Data)**

<b>Infant Mortality</b>									
	<b>Total</b>			<b>White</b>			<b>Black &amp; Other</b>		
<b>Year</b>	<b>Number of Live Birth</b>	<b>Number of Infant Death</b>	<b>Rate</b>	<b>Number of Live Birth</b>	<b>Number of Infant Death</b>	<b>Rate</b>	<b>Number of Live Birth</b>	<b>Number of Infant Death</b>	<b>Rate</b>
2011	57,338*	423	7.4	37,406	188	5.0	19,894	235	11.8
2012	57,100*	435	7.6	37,092	197	5.3	19,959	238	11.9
2013	56,743*	389	6.9	37,177	204	5.5	19,513	185	9.5
2014	57,631*	372	6.5	37,923	177	4.7	19,660	195	9.9
2015	58,135*	405*	7.0	38,459	185	4.8	19,611	219	11.2

<b>Neonatal Mortality (&lt;28 days)</b>									
	<b>Total</b>			<b>White</b>			<b>Black &amp; Other</b>		
<b>Year</b>	<b>Number of Live Birth</b>	<b>Number of Infant Death</b>	<b>Rate</b>	<b>Number of Live Birth</b>	<b>Number of Infant Death</b>	<b>Rate</b>	<b>Number of Live Birth</b>	<b>Number of Infant Death</b>	<b>Rate</b>
2011	57,338*	254	4.4	37,406	104	2.8	19,894	150	7.5
2012	57,100*	270	4.7	37,092	118	3.2	19,959	152	7.6
2013	56,743*	263	4.6	37,177	138	3.7	19,513	125	6.4
2014	57,631*	246	4.3	37,923	113	3	19,660	133	6.8
2015	58,135*	265*	4.6	38,459	121	3.1	19,611	143	7.3

<b>Postneonatal Mortality (28-364 days)</b>									
	<b>Total</b>			<b>White</b>			<b>Black &amp; Other</b>		
<b>Year</b>	<b>Number of Live Birth</b>	<b>Number of Infant Death</b>	<b>Rate</b>	<b>Number of Live Birth</b>	<b>Number of Infant Death</b>	<b>Rate</b>	<b>Number of Live Birth</b>	<b>Number of Infant Death</b>	<b>Rate</b>
2011	57,338*	169	2.9	37,406	84	2.2	19,894	85	4.3
2012	57,100*	165	2.9	37,092	79	2.1	19,959	86	4.3
2013	56,743*	126	2.2	37,177	66	1.8	19,513	60	3.1
2014	57,631*	126	2.2	37,923	64	1.7	19,660	62	3.2
2015	58,135*	140	2.4	38,459	64	1.7	19,611	76	3.9

<sup>1</sup>Rates per 1,000 live births

<sup>2</sup>Race of mother

\*Includes unknown race

**Table 4.**  
**Infant Mortality and Infant Mortality Rates<sup>1</sup>**  
**South Carolina and Each County, 2015, 2013-2015, 2010-2012**  
**(Residence Data)**

County of Residence	2015		2013-2015		2010-2012	
	Number	Rate	Number	Rate	Number	Rate
<b>South Carolina</b>	405	7.0	1,166	6.8	1,288	7.5
Abbeville	3	12.2	8	10.6	15	19.2
Aiken	9	4.5	32	5.7	37	6.4
Allendale	-	0	2	7.4	3	8.8
Anderson	23	10.2	55	8.1	51	7.7
Bamberg	2	16.4	4	9.3	7	14.1
Barnwell	1	4.0	8	9.7	7	7.7
Beaufort	8	3.9	21	3.4	28	4.5
Berkeley	14	5.1	50	6.3	54	7.0
Calhoun	4	26.7	4	9.6	2	4.4
Charleston	25	5.0	68	4.6	90	6.3
Cherokee	4	5.9	11	5.5	17	8.2
Chester	2	5.3	10	8.8	5	4.0
Chesterfield	3	5.8	15	9.6	20	12.9
Clarendon	1	3.0	11	10.6	9	8.5
Colleton	5	10.4	9	6.6	19	13.7
Darlington	8	9.5	16	6.7	30	12.4
Dillon	4	9.7	12	9.5	11	8.3
Dorchester	9	5.0	27	4.9	29	5.3
Edgefield	2	9.5	8	12.2	3	5.7
Fairfield	3	14.1	5	7.7	10	14.1
Florence	23	13.6	68	13.1	74	13.6
Georgetown	1	1.8	7	4.1	17	9.5
Greenville	34	5.3	108	5.7	108	5.9
Greenwood	7	8.5	15	5.8	24	8.9
Hampton	1	4.7	7	10.6	2	2.8
Horry	19	6.0	59	6.3	69	7.6
Jasper	2	5.6	4	3.8	6	6.1
Kershaw	3	4.0	17	7.9	12	5.5
Lancaster	9	8.6	24	8.1	24	9.1
Laurens	8	10.5	25	11.2	13	5.4
Lee	1	6.3	2	3.8	7	12.7
Lexington	28	8.7	59	6.1	65	6.6
McCormick	1	17.9	3	16.4	5	27.3
Marion	7	18.3	15	12.7	21	17.0
Marlboro	4	11.7	10	10.5	11	12.0
Newberry	4	8.8	10	7.3	7	5.4
Oconee	5	6.3	11	4.8	11	4.5
Orangeburg	8	8.0	36	11.7	43	12.2
Pickens	6	4.8	21	5.7	36	10.0
Richland	50	10.0	129	8.9	110	7.5
Saluda	-	0	4	5.4	9	11.8
Spartanburg	21	5.9	58	5.5	54	5.0
Sumter	13	8.5	27	6.0	34	7.4
Union	2	6.4	5	5.3	4	4.4
Williamsburg	3	8.4	6	5.9	16	14.9
York	15	5.1	60	6.9	58	6.6

<sup>1</sup>Rates per 1,000 live births. Rates calculated with 20 or fewer deaths are unreliable and should be used cautiously.

**Table 4-A.**  
**White<sup>1</sup> Infant Mortality and Infant Mortality Rates<sup>2</sup>**  
**South Carolina and Each County, 2015, 2013-2015, 2010-2012**  
**(Residence Data)**

County of Residence	2015		2013-2015		2010-2012	
	Number	Rate	Number	Rate	Number	Rate
<b>South Carolina</b>	185	4.8	566	5.0	593	5.3
Abbeville	-	0	3	5.8	7	13.8
Aiken	5	3.7	16	4.2	20	5.2
Allendale	-	0	-	0	-	0
Anderson	13	7.2	33	6.1	31	6.0
Bamberg	-	0	-	0	1	6.2
Barnwell	1	9.4	3	8.1	-	0
Beaufort	5	3.3	13	2.9	18	4.0
Berkeley	8	4.0	24	4.1	25	4.5
Calhoun	1	11.4	1	4.2	-	0
Charleston	6	1.8	23	2.4	41	4.5
Cherokee	3	5.9	7	4.7	14	9.0
Chester	1	4.9	4	6.6	2	3.0
Chesterfield	3	9.9	13	14.1	9	10.0
Clarendon	-	0	3	6.6	3	6.8
Colleton	2	7.4	3	4.0	5	6.8
Darlington	3	6.8	6	4.9	13	10.9
Dillon	-	0	2	4.0	1	1.9
Dorchester	6	4.8	18	4.7	13	3.4
Edgefield	1	8.8	3	8.4	1	4.1
Fairfield	-	0	-	0	3	13.6
Florence	8	10.1	19	7.7	23	8.7
Georgetown	-	0	5	5.0	3	3.2
Greenville	21	4.3	65	4.5	65	4.7
Greenwood	3	5.8	6	3.8	12	7.3
Hampton	-	0	2	7.5	1	3.5
Horry	14	5.6	43	5.8	42	5.8
Jasper	-	0	2	3.5	3	5.5
Kershaw	-	0	10	6.5	8	5.0
Lancaster	8	10.9	16	7.6	14	7.5
Laurens	4	7.4	15	9.5	8	4.8
Lee	-	0	-	0	1	6.8
Lexington	21	8.1	46	6.0	36	4.6
McCormick	-	0	-	0	-	0
Marion	1	7.9	2	5.2	4	10.3
Marlboro	-	0.0	3	7.8	2	5.9
Newberry	1	3.7	5	6.1	2	2.5
Oconee	4	5.6	9	4.3	9	4.0
Orangeburg	1	3.2	6	6.4	6	5.9
Pickens	5	4.4	20	5.9	31	9.6
Richland	11	5.1	27	4.4	26	4.2
Saluda	-	0	2	3.6	5	8.8
Spartanburg	16	6.0	37	4.7	35	4.4
Sumter	-	0	4	1.9	9	4.2
Union	2	10.0	5	8.3	3	5.1
Williamsburg	-	0	-	0	4	12.0
York	7	3.3	42	6.7	33	5.2

<sup>1</sup>Race of mother

<sup>2</sup>Rates per 1,000 live births. Rates calculated with 20 or fewer deaths are unreliable and should be used cautiously.

**Table 4-B.**  
**Black and Other<sup>1</sup> Infant Mortality and Infant Mortality Rates<sup>2</sup>**  
**South Carolina and Each County, 2015, 2013-2015, 2010-2012**  
**(Residence Data)**

County of Residence	2015		2013-2015		2010-2012	
	Number	Rate	Number	Rate	Number	Rate
<b>South Carolina</b>	219	11.2	599	10.2	695	11.5
Abbeville	3	36.6	5	21.1	8	29.3
Aiken	4	6.2	16	8.6	17	9.0
Allendale	-	0	2	9.0	3	10.5
Anderson	10	22.2	22	15.5	20	13.8
Bamberg	2	24.7	4	13.3	6	18.0
Barnwell	-	0	5	11.0	7	14.4
Beaufort	3	5.8	8	4.9	10	5.9
Berkeley	6	8.1	26	12.0	29	13.8
Calhoun	3	48	3	17	2	9.6
Charleston	19	11.3	45	9.1	49	9.4
Cherokee	1	5.8	4	7.6	3	5.6
Chester	1	5.8	6	11.3	3	5.2
Chesterfield	-	0	2	3.1	11	16.9
Clarendon	1	5.4	8	13.9	6	9.6
Colleton	3	14.3	6	9.7	14	21.4
Darlington	5	12.4	10	8.5	17	13.8
Dillon	4	15.4	10	13.1	10	12.8
Dorchester	3	5.4	9	5.4	16	10.0
Edgefield	1	10.3	5	16.8	2	7.1
Fairfield	3	20.4	5	11.9	7	14.4
Florence	15	16.6	49	18.1	51	18.1
Georgetown	1	4.5	2	2.8	14	16.3
Greenville	13	8.6	43	9.6	43	9.8
Greenwood	4	13.3	9	8.9	12	11.3
Hampton	1	7.7	5	13.0	1	2.4
Horry	5	7.4	16	8.2	27	14.0
Jasper	2	12.0	2	4.2	3	6.9
Kershaw	3	15.2	7	11.6	4	6.7
Lancaster	1	3.3	8	9.3	10	12.8
Laurens	4	18.0	10	15.3	5	6.7
Lee	1	8.3	2	5.2	6	14.9
Lexington	6	9.7	12	6.2	29	14.7
McCormick	1	24.4	3	24.8	5	43.5
Marion	6	23.4	13	16.2	17	20.0
Marlboro	4	21.6	7	12.4	9	15.5
Newberry	3	16.4	5	9.1	5	9.6
Oconee	1	12.3	2	9.2	2	8.5
Orangeburg	7	10.2	30	14.0	37	14.8
Pickens	1	9.2	1	3.1	5	14.3
Richland	39	13.7	102	12.1	84	10.0
Saluda	-	0	2	10.4	4	20.7
Spartanburg	5	5.6	21	7.6	19	6.6
Sumter	13	15.5	23	9.6	25	10.3
Union	-	0	-	0	1	3.0
Williamsburg	3	11.4	6	8.6	12	16.2
York	8	9.9	18	7.4	25	10.5

<sup>1</sup>Race of mother

<sup>2</sup>Rates per 1,000 live births. Rates calculated with 20 or fewer deaths are unreliable and should be used cautiously.



**Table 5.**

Infant, Neonatal and Postneonatal Mortality Rates<sup>1</sup> by Race<sup>2</sup>  
 and Percent Changes from 2014 to 2015  
 South Carolina  
 (Residence Data)

<b>Infant Mortality</b>			
Year	Total	White	Black & Other
2014	6.5	4.7	9.9
2015	7.0	4.8	11.2
<b>Percent Change</b>	7.7%	2.1%	13.1%

<b>Neonatal Mortality</b>			
Year	Total	White	Black & Other
2014	4.3	3.0	6.8
2015	4.6	3.1	7.3
<b>Percent Change</b>	7.0%	3.3%	7.4%

<b>Postneonatal Mortality</b>			
Year	Total	White	Black & Other
2014	2.2	1.7	3.2
2015	2.4	1.7	3.9
<b>Percent Change</b>	9.1%	0.0%	21.9%

<sup>1</sup>Rates per 1,000 live births

<sup>2</sup>Race of mother

**Table 6.**  
**Neonatal Mortality and Neonatal Mortality Rates<sup>1</sup>**  
**South Carolina and Each County, 2015, 2013-2015, 2010-2012**  
**(Residence Data)**

County of Residence	2015		2013-2015		2010-2012	
	Number	Rate	Number	Rate	Number	Rate
<b>South Carolina</b>	265	4.6	774	4.5	790	4.6
Abbeville	1	4.1	4	5.3	12	15.3
Aiken	6	3.0	22	3.9	21	3.6
Allendale	-	0	2	7.4	3	8.8
Anderson	14	6.2	36	5.3	28	4.2
Bamberg	2	16.4	4	9.3	6	12.1
Barnwell	-	0	4	4.8	3	3.3
Beaufort	5	2.4	17	2.8	18	2.9
Berkeley	10	3.7	33	4.1	28	3.7
Calhoun	4	26.7	4	9.6	2	4.4
Charleston	16	3.2	49	3.3	50	3.5
Cherokee	4	5.9	6	3.0	10	4.8
Chester	1	2.7	7	6.2	3	2.4
Chesterfield	3	5.8	12	7.7	14	9.0
Clarendon	-	0	6	5.8	5	4.7
Colleton	1	2.1	4	2.9	13	9.4
Darlington	3	3.6	8	3.3	16	6.6
Dillon	1	2.4	7	5.5	7	5.3
Dorchester	5	2.8	18	3.3	17	3.1
Edgefield	1	4.8	5	7.6	2	3.8
Fairfield	2	9.4	4	6.2	7	9.9
Florence	13	7.7	47	9.1	46	8.4
Georgetown	1	1.8	6	3.5	12	6.7
Greenville	23	3.6	71	3.8	63	3.4
Greenwood	6	7.3	13	5.0	18	6.6
Hampton	-	0	3	4.6	1	1.4
Horry	11	3.5	35	3.7	41	4.5
Jasper	2	5.6	4	3.8	4	4.1
Kershaw	-	0	10	4.6	6	2.7
Lancaster	9	8.6	19	6.4	16	6.0
Laurens	5	6.6	18	8.1	9	3.7
Lee	1	6.3	1	1.9	4	7.3
Lexington	18	5.6	43	4.5	38	3.8
McCormick	1	17.9	2	10.9	4	21.9
Marion	5	13.1	9	7.6	17	13.7
Marlboro	4	11.7	7	7.4	11	12.0
Newberry	4	8.8	10	7.3	3	2.3
Oconee	3	3.8	8	3.5	6	2.4
Orangeburg	7	7.0	23	7.5	27	7.7
Pickens	5	4.0	13	3.5	25	7.0
Richland	32	6.4	79	5.4	72	4.9
Saluda	-	0	3	4.0	7	9.2
Spartanburg	13	3.7	31	2.9	27	2.5
Sumter	8	5.2	15	3.3	18	3.9
Union	2	6.4	4	4.2	1	1.1
Williamsburg	1	2.8	2	2.0	12	11.2
York	12	4.1	46	5.3	36	4.1

<sup>1</sup>Rates per 1,000 live births. Rates calculated with 20 or fewer deaths are unreliable and should be used cautiously.

**Table 6-A.**  
**White<sup>1</sup> Neonatal Mortality and Neonatal Mortality Rates<sup>2</sup>**  
**South Carolina and Each County, 2015, 2013-2015, 2010-2012**  
**(Residence Data)**

County of Residence	2015		2013-2015		2010-2012	
	Number	Rate	Number	Rate	Number	Rate
<b>South Carolina</b>	121	3.1	372	3.3	346	3.1
Abbeville	-	0	2	3.9	5	9.8
Aiken	3	2.2	9	2.4	11	2.8
Allendale	-	0	-	0	-	0
Anderson	9	5.0	23	4.3	17	3.3
Bamberg	-	0	-	0	1	6.2
Barnwell	-	0	1	2.7	-	0
Beaufort	3	2.0	10	2.2	10	2.2
Berkeley	6	3.0	14	2.4	10	1.8
Calhoun	1	11.4	1	4.2	-	0
Charleston	4	1.2	19	2.0	23	2.5
Cherokee	3	5.9	4	2.7	8	5.2
Chester	-	0	2	3.3	1	1.5
Chesterfield	3	9.9	11	12.0	5	5.5
Clarendon	-	0	1	2.2	1	2.3
Colleton	-	0	-	0	3	4.1
Darlington	2	4.6	4	3.3	7	5.9
Dillon	-	0	2	4.0	-	0
Dorchester	3	2.4	11	2.9	6	1.6
Edgefield	-	0	1	2.8	-	0
Fairfield	-	0	-	0	2	9.1
Florence	3	3.8	9	3.7	13	4.9
Georgetown	-	0	4	4.0	2	2.1
Greenville	13	2.7	41	2.9	44	3.2
Greenwood	3	5.8	6	3.8	10	6.1
Hampton	-	0	2	7.5	-	0
Horry	7	2.8	24	3.2	28	3.9
Jasper	-	0	2	3.5	3	5.5
Kershaw	-	0	7	4.5	4	2.5
Lancaster	8	10.9	13	6.2	10	5.3
Laurens	2	3.7	10	6.4	5	3.0
Lee	-	0	-	0	-	0
Lexington	12	4.6	33	4.3	20	2.5
McCormick	-	0	-	0	-	0
Marion	1	7.9	1	2.6	2	5.1
Marlboro	-	0	1	2.6	2	5.9
Newberry	1	3.7	5	6.1	1	1.3
Oconee	3	4.2	7	3.4	4	1.8
Orangeburg	1	3.2	2	2.1	3	2.9
Pickens	4	3.5	12	3.6	20	6.2
Richland	9	4.2	21	3.4	18	2.9
Saluda	-	0	1	1.8	4	7.0
Spartanburg	9	3.4	17	2.2	13	1.6
Sumter	-	0	2	1.0	5	2.3
Union	2	10.0	4	6.6	1	1.7
Williamsburg	-	0	-	0	3	9.0
York	6	2.8	33	5.2	20	3.1

<sup>1</sup>Race of mother

<sup>2</sup>Rates per 1,000 live births. Rates calculated with 20 or fewer deaths are unreliable and should be used cautiously.

**Table 6-B.**

Black and Other<sup>1</sup> Neonatal Mortality and Neonatal Mortality Rates<sup>2</sup>  
 South Carolina and Each County, 2015, 2013-2015, 2010-2012  
 (Residence Data)

County of Residence	2015		2013-2015		2010-2012	
	Number	Rate	Number	Rate	Number	Rate
<b>South Carolina</b>	143	7.3	401	6.8	444	7.4
Abbeville	1	12.2	2	8.4	7	25.6
Aiken	3	4.6	13	7.0	10	5.3
Allendale	-	0	2	9.0	3	10.5
Anderson	5	11.1	13	9.1	11	7.6
Bamberg	2	24.7	4	13.3	5	15.0
Barnwell	-	0	3	6.6	3	6.2
Beaufort	2	3.9	7	4.3	8	4.7
Berkeley	4	5.4	19	8.8	18	8.6
Calhoun	3	48.4	3	16.9	2	9.6
Charleston	12	7.2	30	6.0	27	5.2
Cherokee	1	5.8	2	3.8	2	3.7
Chester	1	5.8	5	9.4	2	3.5
Chesterfield	-	0	1	1.6	9	13.8
Clarendon	-	0	5	8.7	4	6.4
Colleton	1	4.8	4	6.5	10	15.3
Darlington	1	2.5	4	3.4	9	7.3
Dillon	1	3.9	5	6.5	7	9.0
Dorchester	2	3.6	7	4.2	11	6.9
Edgefield	1	10.3	4	13.4	2	7.1
Fairfield	2	13.6	4	9.5	5	10.3
Florence	10	11.1	38	14.0	33	11.7
Georgetown	1	4.5	2	2.8	10	11.7
Greenville	10	6.6	30	6.7	19	4.3
Greenwood	3	10.0	7	6.9	8	7.5
Hampton	-	0	1	2.6	1	2.4
Horry	4	5.9	11	5.7	13	6.8
Jasper	2	12.0	2	4.2	1	2.3
Kershaw	-	0	3	5.0	2	3.3
Lancaster	1	3.3	6	7.0	6	7.7
Laurens	3	13.5	8	12.3	4	5.4
Lee	1	8.3	1	2.6	4	9.9
Lexington	5	8.1	9	4.7	18	9.1
McCormick	1	24.4	2	16.5	4	34.8
Marion	4	15.6	8	10.0	15	17.7
Marlboro	4	21.6	6	10.6	9	15.5
Newberry	3	16.4	5	9.1	2	3.8
Oconee	-	0	1	4.6	2	8.5
Orangeburg	6	8.7	21	9.8	24	9.6
Pickens	1	9.2	1	3.1	5	14.3
Richland	23	8.1	58	6.9	54	6.4
Saluda	-	0	2	10.4	3	15.5
Spartanburg	4	4.5	14	5.1	14	4.9
Sumter	8	9.6	13	5.4	13	5.3
Union	-	0	-	0	-	0
Williamsburg	1	3.8	2	2.9	9	12.2
York	6	7.4	13	5.3	16	6.7

<sup>1</sup>Race of mother

<sup>2</sup>Rates per 1,000 live births. Rates calculated with 20 or fewer deaths are unreliable and should be used cautiously.

**Table 7.**  
**Postneonatal Mortality and Postneonatal Mortality Rates<sup>1</sup>**  
**South Carolina and Each County, 2015, 2013-2015, 2010-2012**  
**(Residence Data)**

County of Residence	2015		2013-2015		2010-2012	
	Number	Rate	Number	Rate	Number	Rate
<b>South Carolina</b>	140	2.4	392	2.3	498	2.9
Abbeville	2	8.1	4	5.3	3	3.8
Aiken	3	1.5	10	1.8	16	2.8
Allendale	-	0	-	0	-	0
Anderson	9	4.0	19	2.8	23	3.5
Bamberg	-	0	-	0	1	2.0
Barnwell	1	4.0	4	4.8	4	4.4
Beaufort	3	2	4	0.6	10	1.6
Berkeley	4	1.5	17	2.1	26	3.4
Calhoun	-	0	-	0	-	0
Charleston	9	1.8	19	1.3	40	2.8
Cherokee	-	0	5	2.5	7	3.4
Chester	1	2.7	3	2.6	2	1.6
Chesterfield	-	0	3	1.9	6	3.9
Clarendon	1	3.0	5	4.8	4	3.8
Colleton	4	8.3	5	3.6	6	4.3
Darlington	5	5.9	8	3.3	14	5.8
Dillon	3	7.3	5	3.9	4	3.0
Dorchester	4	2.2	9	1.6	12	2.2
Edgefield	1	4.8	3	4.6	1	2
Fairfield	1	4.7	1	1.5	3	4.2
Florence	10	5.9	21	4.1	28	5.1
Georgetown	-	0	1	0.6	5	2.8
Greenville	11	1.7	37	2.0	45	2.5
Greenwood	1	1.2	2	0.8	6	2.2
Hampton	1	4.7	4	6.1	1	1.4
Horry	8	2.5	24	2.6	28	3.1
Jasper	-	0	-	0	2	2.0
Kershaw	3	4.0	7	3.2	6	2.7
Lancaster	-	0	5	1.7	8	3.0
Laurens	3	3.9	7	3.1	4	1.7
Lee	-	0	1	1.9	3	5.4
Lexington	10	3.1	16	1.7	27	2.7
McCormick	-	0	1	5.5	1	5.5
Marion	2	5.2	6	5.1	4	3.2
Marlboro	-	0	3	3.2	-	0
Newberry	-	0	-	0	4	3.1
Oconee	2	2.5	3	1.3	5	2.0
Orangeburg	1	1.0	13	4.2	16	4.5
Pickens	1	0.8	8	2.2	11	3.1
Richland	18	3.6	50	3.4	38	2.6
Saluda	-	0	1	1.3	2	2.6
Spartanburg	8	2.2	27	2.5	27	2.5
Sumter	5	3.3	12	2.7	16	3.5
Union	-	0	1	1.1	3	3.3
Williamsburg	2	5.6	4	4.0	4	3.7
York	3	1.0	14	1.6	22	2.5

<sup>1</sup>Rates per 1,000 live births. Rates calculated with 20 or fewer deaths are unreliable and should be used cautiously.

**Table 7-A.**

White<sup>1</sup> Postneonatal Mortality and Postneonatal Mortality Rates<sup>2</sup>  
 South Carolina and Each County, 2015, 2013-2015, 2010-2012  
 (Residence Data)

County of Residence	2015		2013-2015		2010-2012	
	Number	Rate	Number	Rate	Number	Rate
<b>South Carolina</b>	64	1.7	194	1.7	247	2.2
Abbeville	-	0	1	1.9	2	3.9
Aiken	2	1.5	7	1.9	9	2.3
Allendale	-	0	-	0	-	0
Anderson	4	2.2	10	1.9	14	2.7
Bamberg	-	0	-	0	-	0
Barnwell	1	9.4	2	5.4	-	0
Beaufort	2	1.3	3	0.7	8	1.8
Berkeley	2	1.0	10	1.7	15	2.7
Calhoun	-	0	-	0	-	0
Charleston	2	0.6	4	0.4	18	2.0
Cherokee	-	0	3	2.0	6	3.9
Chester	1	4.9	2	3.3	1	1.5
Chesterfield	-	0	2	2.2	4	4.4
Clarendon	-	0	2	4.4	2	4.6
Colleton	2	7.4	3	4.0	2	2.7
Darlington	1	2.3	2	1.6	6	5.0
Dillon	-	0	-	0	1	1.9
Dorchester	3	2.4	7	1.8	7	1.8
Edgefield	1	8.8	2	5.6	1	4.1
Fairfield	-	0	-	0	1	4.5
Florence	5	6.3	10	4.1	10	3.8
Georgetown	-	0	1	1.0	1	1.1
Greenville	8	1.6	24	1.7	21	1.5
Greenwood	-	0	-	0	2	1.2
Hampton	-	0	-	0	1	3.5
Horry	7	2.8	19	2.6	14	1.9
Jasper	-	0	-	0	-	0
Kershaw	-	0	3	1.9	4	2.5
Lancaster	-	0	3	1.4	4	2.1
Laurens	2	3.7	5	3.2	3	1.8
Lee	-	0	-	0	1	6.8
Lexington	9	3.5	13	1.7	16	2.0
McCormick	-	0	-	0	-	0
Marion	-	0	1	2.6	2	5.1
Marlboro	-	0	2	5.2	-	0
Newberry	-	0	-	0	1	1.3
Oconee	1	1	2	1.0	5	2.2
Orangeburg	-	0	4	4.3	3	2.9
Pickens	1	0.9	8	2.4	11	3.4
Richland	2	0.9	6	1.0	8	1.3
Saluda	-	0	1	1.8	1	1.8
Spartanburg	7	2.6	20	2.5	22	2.8
Sumter	-	0	2	1.0	4	1.9
Union	-	0	1	1.7	2	3.4
Williamsburg	-	0	-	0	1	3.0
York	1	0.5	9	1.4	13	2.0

<sup>1</sup>Race of mother

<sup>2</sup>Rates per 1,000 live births. Rates calculated with 20 or fewer deaths are unreliable and should be used cautiously.

**Table 7-B.**

Black and Other<sup>1</sup> Postneonatal Mortality and Postneonatal Mortality Rates<sup>2</sup>  
 South Carolina and Each County, 2015, 2013-2015, 2010-2012  
 (Residence Data)

County of Residence	2015		2013-2015		2010-2012	
	Number	Rate	Number	Rate	Number	Rate
<b>South Carolina</b>	76	3.9	198	3.4	251	4.2
Abbeville	2	24.4	3	12.7	1	3.7
Aiken	1	1.5	3	1.6	7	3.7
Allendale	-	0	-	0	-	0
Anderson	5	11.1	9	6.3	9	6.2
Bamberg	-	0	-	0	1	3.0
Barnwell	-	0	2	4.4	4	8.2
Beaufort	1	1.9	1	0.6	2	1.2
Berkeley	2	2.7	7	3.2	11	5.2
Calhoun	-	0	-	0	-	0
Charleston	7	4.2	15	3.0	22	4.2
Cherokee	-	0	2	3.8	1	1.9
Chester	-	0	1	1.9	1	1.7
Chesterfield	-	0	1	1.6	2	3.1
Clarendon	1	5.4	3	5.2	2	3.2
Colleton	2	9.5	2	3.2	4	6.1
Darlington	4	9.9	6	5.1	8	6.5
Dillon	3	11.6	5	6.5	3	3.8
Dorchester	1	1.8	2	1.2	5	3.1
Edgefield	-	0	1	3.4	-	0
Fairfield	1	6.8	1	2.4	2	4.1
Florence	5	5.5	11	4.1	18	6.4
Georgetown	-	0	-	0	4	4.7
Greenville	3	2.0	13	2.9	24	5.4
Greenwood	1	3.3	2	2.0	4	3.8
Hampton	1	7.7	4	10.4	-	0
Horry	1	1.5	5	2.6	14	7.3
Jasper	-	0	-	0	2	4.6
Kershaw	3	15	4	6.7	2	3.3
Lancaster	-	0	2	2.3	4	5.1
Laurens	1	4.5	2	3.1	1	1.3
Lee	-	0	1	2.6	2	5.0
Lexington	1	1.6	3	1.6	11	5.6
McCormick	-	0	1	8.3	1	8.7
Marion	2	7.8	5	6.2	2	2.4
Marlboro	-	0	1	1.8	-	0
Newberry	-	0	-	0	3	5.7
Oconee	1	12.3	1	4.6	-	0
Orangeburg	1	1.5	9	4.2	13	5.2
Pickens	-	0	-	0	-	0
Richland	16	5.6	44	5.2	30	3.6
Saluda	-	0	-	0	1	5.2
Spartanburg	1	1.1	7	2.5	5	1.7
Sumter	5	6.0	10	4.2	12	4.9
Union	-	0	-	0	1	3.0
Williamsburg	2	7.6	4	5.7	3	4.1
York	2	2.5	5	2.1	9	3.8

<sup>1</sup>Race of mother

<sup>2</sup>Rates per 1,000 live births. Rates calculated with 20 or fewer deaths are unreliable and should be used cautiously.

**Table 8.**  
**Leading Causes of Infant Death by Age at Death**  
**South Carolina, 2015**  
**(Residence Data)**

Cause of Infant Death (ICD-10 Codes)	Total	Under 1 Day	1-6 Days	7-27 Days	Neonatal (<28 days)	Post-Neonatal (28-364 days)
<b>Total Infant Deaths</b>	405	177	48	40	265	140
Disorders related to short gestation and low birthweight, NEC (P07)	79	66	7	1	74	5
Congenital malformations, deformations, etc. (Q00-Q99)	72	36	9	14	59	13
Accidents (V01-X59, Y85-Y86)	38	1	1	2	4	34
Sudden infant death syndrome (R95)	28	-	1	-	1	27
Fetus and newborn affected by maternal complications of pregnancy (P01)	24	24	-	-	24	-
Newborn affected by complication of placenta, etc. (P02)	13	13	-	-	13	-
Atelectasis (P28.0-P28.1)	11	10	-	-	10	1
Diseases of circulatory system (I00-I99)	9	-	-	-	-	9
Respiratory distress of newborn (P22)	8	2	2	4	8	-
Assault (homicide) (X85-Y09, Y87.1)	8	2	-	-	2	6
All other causes	115	23	28	19	70	45



**Table 8a.**  
**Leading Causes of White<sup>1</sup> Infant Death by Age at Death**  
**South Carolina, 2015**  
**(Residence Data)**

Cause of Infant Death (ICD-10 Codes)	Total	Under 1 Day	1-6 Days	7-27 Days	Neonatal (<28 days)	Post-Neonatal (28-364 days)
<b>Total White Infant Deaths</b>	186	79	22	21	122	64
Congenital malformations, deformations, etc. (Q00-Q99)	41	22	4	8	34	7
Disorders related to short gestation and low birthweight, NEC (P07)	26	21	4	-	25	1
Accidents (V01-X59, Y85-Y86)	20	1	-	2	3	17
Sudden infant death syndrome (R95)	14	-	-	-	-	14
Fetus and newborn affected by maternal complications of pregnancy (P01)	9	9	-	-	9	-
Newborn affected by complication of placenta, etc. (P02)	9	9	-	-	9	-
Diseases of circulatory system (I00-I99)	6	-	-	-	-	6
Assault (homicide) (X85-Y09, Y87.1)	6	2	-	-	2	4
Atelectasis (P28.0-P28.1)	4	4	-	-	4	-
Neonatal hemorrhage (P50-P52, P54)	4	-	4	-	4	-
Necrotizing enterocolitis of newborn (P77)	4	-	-	4	4	-
All other causes	43	11	10	7	28	15

<sup>1</sup> Race of child

**Table 8b.**  
 Leading Causes of Black and Other<sup>1</sup> Infant Death by Age at Death  
 South Carolina, 2015  
 (Residence Data)

Cause of Infant Death (ICD-10 Codes)	Total	Under 1 Day	1-6 Days	7-27 Days	Neonatal (<28 days)	Post-Neonatal (28-364 days)
<b>Total Black and Other Infant Deaths</b>	218	97	26	19	142	76
Disorders related to short gestation and low birthweight, NEC (P07)	53	45	3	1	49	4
Congenital malformations, deformations, etc. (Q00-Q99)	31	14	5	6	25	6
Accidents (V01-X59, Y85-Y86)	18	-	1	-	1	17
Fetus and newborn affected by maternal complications of pregnancy (P01)	14	14	-	-	14	-
Sudden infant death syndrome (R95)	14	-	1	-	1	13
Atelectasis (P28.0-P28.1)	7	6	-	-	6	1
Respiratory distress of newborn (P22)	5	1	2	2	5	-
Newborn affected by maternal hypertensive disorder (P00.0)	4	3	1	-	4	-
Newborn affected by complication of placenta, etc. (P02)	4	4	-	-	4	-
All other causes	68	10	13	10	33	35

<sup>1</sup> Race of child

**Table 8c.**  
 Percent Changes of Leading Causes of Infant Death  
 from 2014 to 2015, South Carolina

Cause of Infant Death Ranked by 2015 Data (ICD-10 Codes)	2014	2015	% Change
<b>Total Infant Deaths</b>	<b>372</b>	<b>405</b>	<b>8.9%</b>
Disorders related to short gestation and low birthweight, NEC (P07)	71	79	11.3%
Congenital malformations, deformations, etc. (Q00-Q99)	56	72	28.6%
Accidents (V01-X59, Y85-Y86)	40	38	-5.0%
Sudden infant death syndrome (R95)	31	28	-9.7%
Fetus and newborn affected by maternal complications of pregnancy (P01)	18	24	33.3%
Newborn affected by complication of placenta, etc. (P02)	16	13	-18.8%
Atelectasis (P28.0-P28.1)	5	11	120.0%
Diseases of circulatory system (I00-I99)	9	9	0.0%
Respiratory distress of newborn (P22)	1	8	700.0%
Assault (homicide) (X85-Y09, Y87.1)	3	8	166.7%
All other causes	111	115	3.6%

**Table 9.**  
 Breakdown of Infant Deaths due to Accidents  
 South Carolina, 2009-2015  
 (Residence Data)

	2009	2010	2011	2012	2013	2014	2015	Total (2009-2015)
Accidental suffocation and strangulation in bed (W75, W84)	22	25	21	39	21	31	35	194
Other accidental threats to breathing	3	2	2	0	2	3	1	13
Transportation	5	1	3	1	0	3	0	13
Drowning	0	0	1	0	0	1	0	2
Poison	1	0	1	0	0	1	0	3
Other accidents	2	4	2	1	0	1	2	12
<b>Total</b>	<b>33</b>	<b>32</b>	<b>30</b>	<b>41</b>	<b>23</b>	<b>40</b>	<b>38</b>	<b>237</b>

**Table 10.**  
 Breakdown of Sudden Unexplained Infant Deaths  
 South Carolina, 2008-2014  
 (Residence Data)

	2009	2010	2011	2012	2013	2014	2015	Total (2009-2015)
Accidental suffocation and strangulation in bed (W75, W84)	22	25	21	39	21	31	35	194
Sudden Infant Death Syndrome (R95)	44	49	45	33	35	31	28	265
Hanging, strangulation, and suffocation, undetermined intent (Y20)	5	4	2	1	9	4	4	29
Other ill-defined and unspecified causes of mortality (R99)	8	8	10	12	6	11	11	66
<b>Total</b>	<b>79</b>	<b>86</b>	<b>78</b>	<b>85</b>	<b>71</b>	<b>77</b>	<b>78</b>	<b>554</b>

**Table 11.**  
**Leading Causes of Infant Death and Mortality Rates\*,**  
**South Carolina, 2013-2015**  
**(Residence Data)**

**Table 11. South Carolina Infant Death, Resident Data, 2013-2015, All races**

Rank	Cause of death	Number	Mortality rate*
	.....Total Infant Deaths.....	1166	6.8
1	Disorders related to short gestation and low birthweight (P07).....	226	1.3
2	Congenital malformations, deformations, etc. (Q00-Q99).....	201	1.2
3	Accidents (V01-X59,Y85-Y86).....	101	0.6
4	Sudden infant death syndrome (R95).....	94	0.5
5	Fetus and newborn affected by maternal complications of pregnancy (P01)...	62	0.4
6	Newborn affected by complications of placenta, etc. (P02).....	41	0.2
7	Necrotizing enterocolitis of newborn (P77).....	25	0.1
8	Disease of circulatory system (I00-I99).....	24	0.1
8	Atelectasis (P28.0-P28.1)	24	0.1
10	Bacterial sepsis of newborn (P36).....	23	0.1
	.....All Other Causes.....	345	2.0

**Table 11-A. South Carolina Infant death, Resident Data, 2013-2015, White**

Rank	Cause of death	Number	Mortality rate*
	.....All White Infant Deaths.....	551	4.9
1	Congenital malformations, deformations, etc. (Q00-Q99).....	124	1.1
2	Disorders related to short gestation and low birthweight (P07).....	77	0.7
3	Accidents (V01-X59, Y85-Y86).....	58	0.5
4	Sudden infant death syndrome (R95).....	46	0.4
5	Fetus and newborn affected by maternal complications of pregnancy (P01)...	24	0.2
6	Newborn affected by complications of placenta, etc. (P02).....	22	0.2
7	Necrotizing enterocolitis of newborn (P77).....	13	0.1
8	Disease of circulatory system (I00-I99).....	12	0.1
9	Bacterial sepsis of newborn (P36).....	10	0.1
10	Hydrops fetalis (P83.2)	9	0.1
	.....All Other Causes.....	156	1.4

**Table 11-B. South Carolina Infant death, Resident Data, 2013-2015, Black and Others**

Rank	Cause of death	Number	Mortality rate*
	.....All Black And Other Infant Deaths.....	614	10.4
1	Disorders related to short gestation and low birthweight (P07).....	149	2.5
2	Congenital malformations, deformations, etc. (Q00-Q99).....	77	1.3
3	Sudden infant death syndrome (R95).....	48	0.8
4	Accidents (V01-X59, Y85-Y86).....	43	0.7
5	Fetus and newborn affected by maternal complications of pregnancy (P01)...	37	0.6
6	Newborn affected by complications of placenta, etc. (P02).....	19	0.3
7	Atelectasis (P28.0-P28.1)	16	0.3
8	Bacterial sepsis of newborn (P36).....	13	0.2
9	Disease of circulatory system (I00-I99).....	12	0.2
9	Respiratory distress of newborn (P22).....	12	0.2
9	Necrotizing enterocolitis of newborn (P77).....	12	0.2
	.....All Other Causes.....	176	3.0

\* Rates are per 1,000 live births.

**Table 12.**

Comparison of Characteristics for All Live Births, by Race<sup>1</sup>  
 Z-tests for differences in proportions<sup>3</sup>  
 South Carolina, 2014 to 2015  
 (Residence Data)

	2014		2015		Z-TEST	P-VALUE
	Percent	Number	Percent	Number		

MOTHER < 18 YEARS						
TOTAL <sup>2</sup>	2.14	1,235	1.91	1,110	-2.8209	0.0048
White	1.81	685	1.56	600	-2.6452	0.0082
Black & Other	2.79	549	2.60	509	-1.2055	0.2280

MARITAL STATUS: UNMARRIED						
TOTAL <sup>2</sup>	47.19	27,195	46.40	26,975	-2.6850	0.0073
White	33.68	12,771	33.08	12,722	-1.7487	0.0803
Black & Other	73.30	14,411	72.60	14,237	-1.5705	0.1163

OBESE PRIOR TO PREGNANCY						
TOTAL <sup>2</sup>	28.65	16,509	29.08	16,906	1.6314	0.1028
White	23.70	8,988	24.02	9,238	1.0365	0.3000
Black & Other	38.21	7,513	39.03	7,654	1.6575	0.0974

TOBACCO USE DURING PREGNANCY						
TOTAL <sup>2</sup>	11.15	6,428	9.78	5,686	-7.6311	0.0000
White	13.18	4,997	11.53	4,433	-6.9315	0.0000
Black & Other	7.26	1,427	6.38	1,252	-3.4357	0.0006

HISPANIC MOTHER						
TOTAL <sup>2</sup>	7.93	4,568	8.35	4,852	2.6121	0.0090
White	11.16	4,232	11.77	4,526	2.6409	0.0083
Black & Other	1.71	336	1.66	326	-0.3596	0.7191

VERY LOW BIRTHWEIGHT						
TOTAL <sup>2</sup>	1.78	1,026	1.80	1,046	0.2434	0.8077
White	1.17	444	1.15	444	-0.2103	0.8334
Black & Other	2.95	579	3.04	596	0.5470	0.5844

LOW BIRTHWEIGHT						
TOTAL <sup>2</sup>	9.45	5,444	9.55	5,549	0.5729	0.5667
White	7.17	2,719	7.18	2,761	0.0497	0.9604
Black & Other	13.83	2,718	14.15	2,774	0.9145	0.3605

<sup>1</sup>Race of mother

<sup>2</sup>Includes unknown races

<sup>3</sup>Proportions are expressed as percentages

**Table 12. (continued)**  
 Comparison of Characteristics for All Live Births, by Race<sup>1</sup>  
 Z-tests for differences in proportions<sup>3</sup>  
 South Carolina, 2014 to 2015  
 (Residence Data)

	2014		2015		Z-TEST	P-VALUE
	Percent	Number	Percent	Number		

PREMATURE BIRTHS (< 37 WEEKS)						
TOTAL <sup>2</sup>	10.78	6,213	11.05	6,426	1.4888	0.1365
White	9.40	3,564	9.37	3,604	-0.1278	0.8983
Black & Other	13.44	2,643	14.32	2,809	2.5219	0.0117

VERY PREMATURE BIRTHS (< 32 WEEKS)						
TOTAL <sup>2</sup>	1.95	1,124	2.00	1,163	0.6134	0.5396
White	1.36	516	1.35	521	-0.0712	0.9432
Black & Other	3.08	605	3.24	636	0.9389	0.3478

PREMATURE 32-36 WEEKS BIRTHS						
TOTAL <sup>2</sup>	8.83	5,089	9.05	5,263	1.3280	0.1842
White	8.04	3,048	8.02	3,083	-0.1069	0.9149
Black & Other	10.37	2,038	11.08	2,173	2.2875	0.0222

KOTELCHUCK INDEX: ADEQUATE, ADEQUATE PLUS						
TOTAL <sup>2</sup>	74.63	43,011	73.79	42,899	-3.2652	0.0011
White	77.14	29,252	76.31	29,348	-2.6988	0.0070
Black & Other	69.86	13,735	68.95	13,521	-1.9710	0.0487

KOTELCHUCK INDEX: INADEQUATE						
TOTAL <sup>2</sup>	18.84	10,857	19.52	11,346	2.9288	0.0034
White	16.23	6,154	16.94	6,515	2.6469	0.0081
Black & Other	23.88	4,695	24.51	4,807	1.4594	0.1445

< 5 PRENATAL CARE VISITS						
TOTAL <sup>2</sup>	5.12	2,953	6.04	3,512	6.7947	0.0000
White	4.27	1,618	5.09	1,956	5.3613	0.0000
Black & Other	6.77	1,330	7.86	1,541	4.1597	0.0000

PRENATAL CARE BEGAN FIRST TRIMESTER						
TOTAL <sup>2</sup>	70.30	40,516	69.78	40,564	-1.9568	0.0504
White	73.62	27,918	72.85	28,017	-2.3987	0.0165
Black & Other	63.97	12,577	63.83	12,517	-0.3014	0.7631

<sup>1</sup>Race of mother

<sup>2</sup>Includes unknown races

<sup>3</sup>Proportions are expressed as percentages

**Table 12-A.**

Comparison of Characteristics of Infants who Died, by Race<sup>1</sup>  
 Z-tests for differences in proportions<sup>3</sup>  
 South Carolina, 2014 to 2015  
 (Residence Data)

	2014		2015		Z-TEST	P-VALUE
	Percent	Number	Percent	Number		

MOTHER < 18 YEARS						
TOTAL <sup>2</sup>	2.69	10	2.96	12	0.2307	0.8176
White	2.82	5	3.24	6	0.2318	0.8167
Black & Other	2.56	5	2.74	6	0.1109	0.9117

MARITAL STATUS: UNMARRIED						
TOTAL <sup>2</sup>	62.90	234	58.02	235	-1.3888	0.1649
White	46.33	82	35.68	66	-2.0607	0.0393
Black & Other	77.95	152	76.71	168	-0.2997	0.7644

OBESE PRIOR TO PREGNANCY						
TOTAL <sup>2</sup>	37.37	139	37.78	153	0.1185	0.9057
White	31.64	56	30.81	57	-0.1699	0.8651
Black & Other	42.56	83	43.84	96	0.2607	0.7943

TOBACCO USE DURING PREGNANCY						
TOTAL <sup>2</sup>	19.62	73	14.81	60	-1.7778	0.0754
White	29.38	52	20.54	38	-1.9448	0.0518
Black & Other	10.77	21	10.05	22	-0.2409	0.8096

HISPANIC MOTHER						
TOTAL <sup>2</sup>	5.65	21	5.43	22	-0.1298	0.8968
White	11.86	21	10.27	19	-0.4836	0.6287
Black & Other	0.00	0	1.37	3	1.6403	0.1009

VERY LOW BIRTHWEIGHT						
TOTAL <sup>2</sup>	52.96	197	52.59	213	-0.1016	0.9190
White	38.42	68	43.78	81	1.0370	0.2997
Black & Other	66.15	129	59.82	131	-1.3315	0.1830

LOW BIRTHWEIGHT						
TOTAL <sup>2</sup>	66.13	246	71.60	290	1.6484	0.0993
White	54.80	97	68.11	126	2.6020	0.0093
Black & Other	76.41	149	74.43	163	-0.4669	0.6405

<sup>1</sup>Race of mother

<sup>2</sup>Includes unknown races

<sup>3</sup>Proportions are expressed as percentages



**Table 12-A. (continued)**

Comparison of Characteristics of Infants who Died, by Race<sup>1</sup>  
 Z-tests for differences in proportions<sup>3</sup>  
 South Carolina, 2014 to 2015  
 (Residence Data)

	2014		2015		Z-TEST	P-VALUE
	Percent	Number	Percent	Number		

PREMATURE BIRTHS (< 37 WEEKS)						
TOTAL <sup>2</sup>	67.47	251	69.88	283	0.7219	0.4704
White	57.63	102	66.49	123	1.7373	0.0823
Black & Other	76.41	149	72.60	159	-0.8860	0.3756

VERY PREMATURE BIRTHS (< 32 WEEKS)						
TOTAL <sup>2</sup>	54.30	202	52.84	214	-0.4081	0.6832
White	40.11	71	44.32	82	0.8108	0.4175
Black & Other	67.18	131	59.82	131	-1.5512	0.1209

PREMATURE 32-36 WEEKS BIRTHS						
TOTAL <sup>2</sup>	13.17	49	17.04	69	1.4996	0.1337
White	17.51	31	22.16	41	1.1075	0.2681
Black & Other	9.23	18	12.79	28	1.1488	0.2507

KOTELCHUCK INDEX: ADEQUATE, ADEQUATE PLUS						
TOTAL <sup>2</sup>	62.10	231	64.20	260	0.6065	0.5442
White	61.58	109	63.24	117	0.3263	0.7442
Black & Other	62.56	122	64.84	142	0.4809	0.6306

KOTELCHUCK INDEX: INADEQUATE						
TOTAL <sup>2</sup>	27.96	104	30.12	122	0.6643	0.5065
White	29.94	53	30.27	56	0.0677	0.9460
Black & Other	26.15	51	30.14	66	0.8985	0.3689

< 5 PRENATAL CARE VISITS						
TOTAL <sup>2</sup>	29.84	111	35.56	144	1.6954	0.0900
White	28.81	51	31.89	59	0.6366	0.5244
Black & Other	30.77	60	38.36	84	1.6179	0.1057

PRENATAL CARE BEGAN FIRST TRIMESTER						
TOTAL <sup>2</sup>	55.38	206	60.25	244	1.3738	0.1695
White	59.32	105	61.62	114	0.4474	0.6546
Black & Other	51.79	101	58.90	129	1.4531	0.1462

<sup>1</sup>Race of mother

<sup>2</sup>Includes unknown races

<sup>3</sup>Proportions are expressed as percentages

**Table 13.**  
Multiple Births Trends,  
South Carolina, 2011-2015  
(Residence Data)

Year	Singleton Births	Singleton Deaths	Infant Mortality Rate*	Twin Births***	Twin Deaths	Infant Mortality Rate*	Higher Order (3+) Births	Higher Order (3+) Deaths	Infant Mortality Rate*	Total Births**	Total Deaths**	Infant Mortality Rate*
2011	55,343	358	6.5	1,915	65	33.9	80	0	0.0	57,338	423	7.4
2012	55,122	380	6.9	1,918	54	28.2	58	1	17.2	57,100	435	7.6
2013	54,668	326	6.0	2,003	55	27.5	72	6	83.3	56,743	389	6.9
2014	55,548	324	5.8	2,030	44	21.7	53	4	75.5	57,631	372	6.5
2015	56,006	352	6.3	2,085	48	23.0	44	5	113.6	58,135	405	7.0
Total	276,687	1,740	6.3	9,951	266	26.7	307	16	52.1	286,947	2,024	7.1

\* Rates are per 1,000 births. Rates calculated with 20 or fewer deaths are unreliable and should be used cautiously

\*\* Includes Unknown Birth Number

\*\*\* Twin births do not include twin fetal deaths

**Table 14.**  
 Infant Mortality Rates<sup>1</sup> by Race<sup>2</sup> and Birthweight<sup>3</sup> Group  
 South Carolina  
 2013, 2014, and 2015  
 (Residence Data)

<b>Infant Mortality for Very Low Birthweight (0-1499 grams)</b>									
	Total			White			Black & Other		
Year	Number of Live Birth	Number of Infant Death	Rate	Number of Live Birth	Number of Infant Death	Rate	Number of Live Birth	Number of Infant Death	Rate
2013	1,069*	212	198.3	473	98	207.2	594	114	191.9
2014	1,026*	197	192.0	444	68	153.2	579	129	222.8
2015	1,046*	213	207.6	444	81	182.4	596	131	219.8

<b>Infant Mortality for Intermediate Low Birthweight (1500-2499 grams)</b>									
	Total			White			Black & Other		
Year	Number of Live Birth	Number of Infant Death	Rate	Number of Live Birth	Number of Infant Death	Rate	Number of Live Birth	Number of Infant Death	Rate
2013	4,429*	63	14.2	2,312	35	15.1	2,112	28	13.3
2014	4,418*	49	11.1	2,275	29	12.7	2,139	20	9.4
2015	4,503*	77	17.4	2,317	45	19.4	2,178	32	14.7

<b>Infant Mortality for Normal Birthweight (2500+ grams)</b>									
	Total			White			Black & Other		
Year	Number of Live Birth	Number of Infant Death	Rate	Number of Live Birth	Number of Infant Death	Rate	Number of Live Birth	Number of Infant Death	Rate
2013	51,195*	110	2.1	34,364	70	2.0	16,788	40	2.4
2014	52,167*	122	2.3	35,197	78	2.2	16,935	44	2.6
2015	52,571*	111	2.1	35,689	57	1.6	16,835	54	3.2

<sup>1</sup>Rates per 1,000 live births

<sup>2</sup>Race of mother

<sup>3</sup>Does not include missing birthweights

\*Includes unknown race

**Table 14-A.**  
 Neonatal Mortality Rates<sup>1</sup> by Race<sup>2</sup> and Birthweight<sup>3</sup> Group  
 South Carolina  
 2013, 2014, and 2015  
 (Residence Data)

<b>Neonatal Mortality for Very Low Birthweight (0-1499 grams)</b>									
	Total			White			Black & Other		
Year	Number of Live Birth	Number of Infant Death	Rate	Number of Live Birth	Number of Infant Death	Rate	Number of Live Birth	Number of Infant Death	Rate
2013	1,069*	183	171.2	473	86	181.8	594	97	163.3
2014	1,026*	173	168.6	444	60	135.1	579	113	195.2
2015	1,046*	184	179.3	444	70	157.7	596	113	189.6

<b>Neonatal Mortality for Intermediate Low Birthweight (1500-2499 grams)</b>									
	Total			White			Black & Other		
Year	Number of Live Birth	Number of Infant Death	Rate	Number of Live Birth	Number of Infant Death	Rate	Number of Live Birth	Number of Infant Death	Rate
2013	4,429*	38	8.6	2,312	23	9.9	2,112	15	7.1
2014	4,418*	32	7.2	2,275	22	9.7	2,139	10	4.7
2015	4,503*	48	10.9	2,317	34	14.7	2,178	14	6.4

<b>Neonatal Mortality for Normal Birthweight (2500+ grams)</b>									
	Total			White			Black & Other		
Year	Number of Live Birth	Number of Infant Death	Rate	Number of Live Birth	Number of Infant Death	Rate	Number of Live Birth	Number of Infant Death	Rate
2013	51,195*	39	0.8	34,364	29	0.8	16,788	10	0.6
2014	52,167*	40	0.8	35,197	31	0.9	16,935	9	0.5
2015	52,571*	31	0.6	35,689	16	0.4	16,835	15	0.9

<sup>1</sup>Rates per 1,000 live births

<sup>2</sup>Race of mother

<sup>3</sup>Does not include missing birthweights

\*Includes unknown race

**Table 14-B.**  
 Postneonatal Mortality Rates<sup>1</sup> by Race<sup>2</sup> and Birthweight<sup>3</sup> Group  
 South Carolina  
 2013, 2014, and 2015  
 (Residence Data)

<b>Postneonatal Mortality for Very Low Birthweight (0-1499 grams)</b>									
	Total			White			Black & Other		
Year	Number of Live Birth	Number of Infant Death	Rate	Number of Live Birth	Number of Infant Death	Rate	Number of Live Birth	Number of Infant Death	Rate
2013	1,069*	29	27.1	473	12	25.4	594	17	28.6
2014	1,026*	24	23.4	444	8	18.0	579	16	27.6
2015	1,046*	29	28.3	444	11	24.8	596	18	30.2

<b>Postneonatal Mortality for Intermediate Low Birthweight (1500-2499 grams)</b>									
	Total			White			Black & Other		
Year	Number of Live Birth	Number of Infant Death	Rate	Number of Live Birth	Number of Infant Death	Rate	Number of Live Birth	Number of Infant Death	Rate
2013	4,429*	25	5.6	2,312	12	5.2	2,112	13	6.2
2014	4,418*	17	3.8	2,275	7	3.1	2,139	10	4.7
2015	4,503*	29	6.6	2,317	11	4.7	2,178	18	8.3

<b>Postneonatal Mortality for Normal Birthweight (2500+ grams)</b>									
	Total			White			Black & Other		
Year	Number of Live Birth	Number of Infant Death	Rate	Number of Live Birth	Number of Infant Death	Rate	Number of Live Birth	Number of Infant Death	Rate
2013	51,195*	71	1.4	34,364	41	1.2	16,788	30	1.8
2014	52,167*	82	1.6	35,197	47	1.3	16,935	35	2.1
2015	52,571*	80	1.5	35,689	41	1.1	16,835	39	2.3

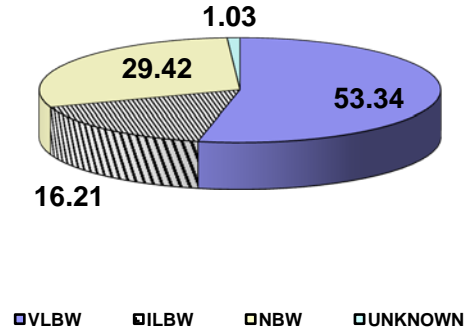
<sup>1</sup>Rates per 1,000 live births

<sup>2</sup>Race of mother

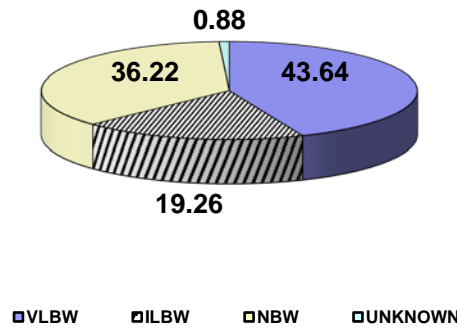
<sup>3</sup>Does not include missing birthweights

\*Includes unknown race

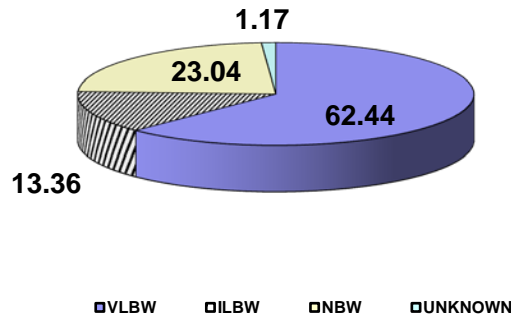
**Figure 1**  
**Percentage of Infant Deaths by Birthweight Group**  
**South Carolina, 2013-2015 Residence Data**



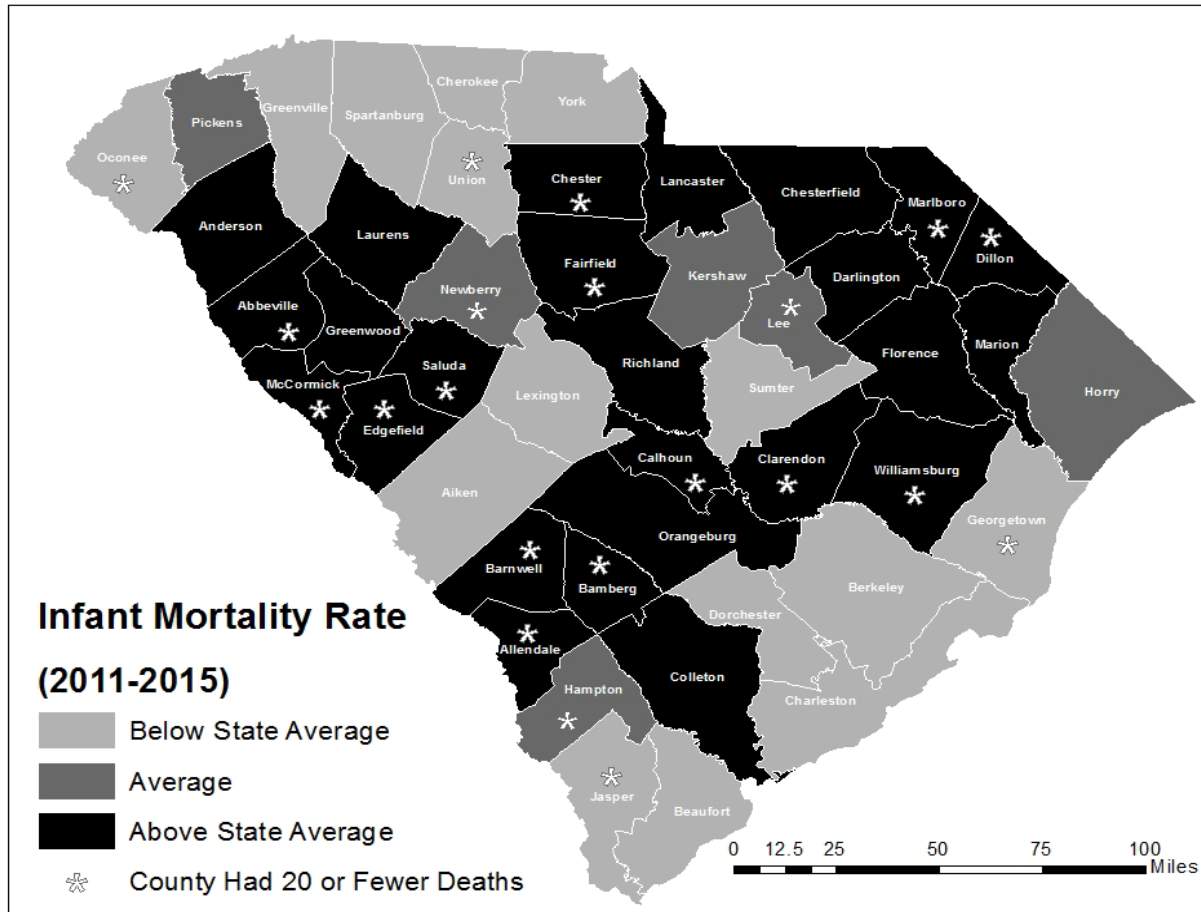
**Figure 1-A**  
**Percentage of White Infant Deaths by Birthweight Group**  
**South Carolina, 2013-2015 Residence Data**



**Figure 1-B**  
**Percentage of Black and Other Infant Deaths by Birthweight Group**  
**South Carolina, 2013-2015 Residence Data**



**Figure 2.**  
**Five Year Infant Mortality Rates by County**  
**South Carolina**  
**2011-2015**  
**(Residence Data)**



NOTE: Counties with rates calculated with 20 or fewer deaths are unreliable and should be used cautiously.

**Above State Average** indicates a rate greater than 7.4.  
**State Average** indicates a rate between 6.7 and 7.4 inclusive.  
**Below State Average** indicates a rate lower than 6.7.  
 Rate per 1,000 live births