

Geographic Spread



South Carolina reported **sporadic activity** this week.



Influenza-Associated Hospitalizations and Deaths

A total of **5** influenza-associated hospitalizations were reported by 21 hospitals. The cumulative hospitalization rate is **90.6** per 100,000. There was **0** laboratory-confirmed influenza-associated death reported this week. The cumulative mortality rate is **5.5** per 100,000. Compared to the previous week, the number of reported hospitalizations **increased** by **2 (66.7%)** and number of reported deaths **remained the same**. In the current flu season, there have been **4,497** influenza-associated hospitalizations and **272** influenza-associated deaths reported.



Virologic Surveillance

A total of **55** influenza cases (**52** positive rapid antigen detection tests; **3** lab-confirmed tests) were reported from 13 counties representing all four DHEC Public Health regions. Influenza B was most frequently reported by clinical labs. Compared to the previous week, this is a **decrease** of **51** cases (**48.1%**). In the current flu season, there have been **135,289** influenza cases (**131,724** positive rapid antigen detection tests; **3,565** lab-confirmed tests) reported.



Influenza-Like Illness Surveillance

The percent of patient visits to sentinel providers for an influenza-like illness (ILI) was **0.85%**, which is **below** South Carolina's baseline (**3.13%**). Compared to the previous week, this is a **decrease** of **0.04%**.

The ILI activity level was **minimal**.

For a description of South Carolina's influenza surveillance components and definitions go to:

<http://www.scdhec.gov/Health/DiseasesandConditions/InfectiousDiseases/Flu/FluData/>

For national surveillance, please visit:

<https://www.cdc.gov/flu/weekly/>

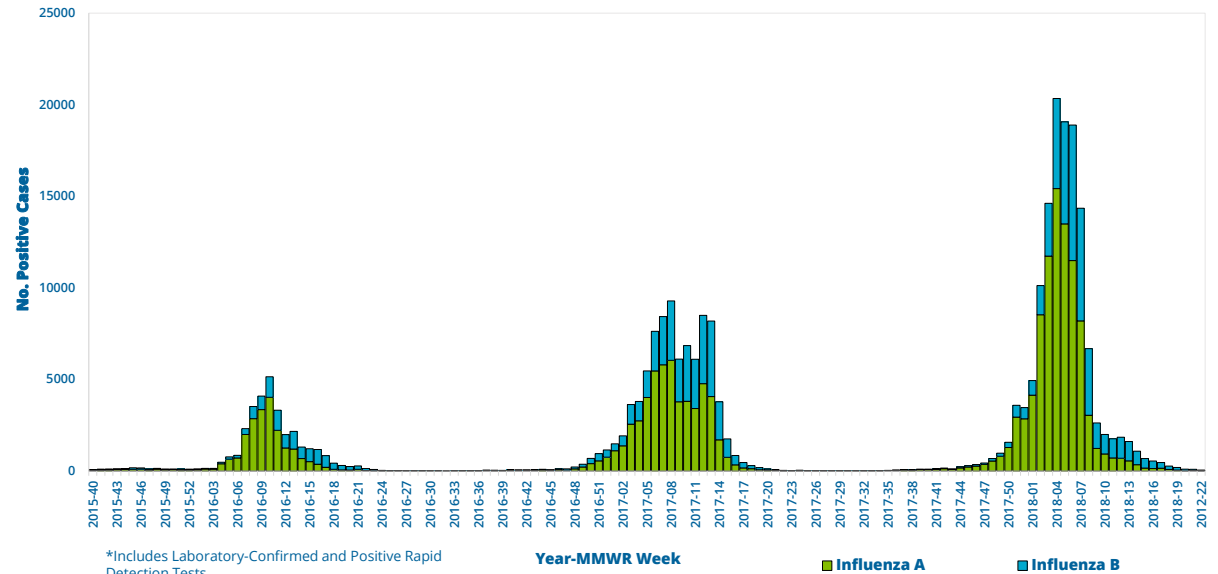


Virologic Surveillance

This week, **3** lab-confirmed cases and **52** positive rapid influenza detection tests were reported by clinical labs.

Influenza B was most frequently reported by clinical labs.

Influenza Cases* Reported by Clinical and Public Health Labs, 2015-16 Season to Present



Influenza Cases Reported by Public Health and Clinical Labs, This Week and Season Total

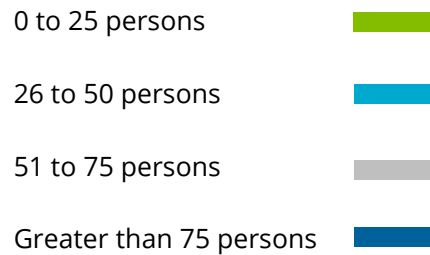
Influenza Type	Public Health Lab		Clinical Labs		Total	
	This Week	Season Total	This Week	Season Total	This Week	Season Total
Overall	0	233	55	135056	55	135289
Influenza A	0	173 (74.2%)	13 (23.6%)	91123 (67.5%)	13 (23.6%)	91296 (67.5%)
A (H3)	--	131 (75.7%)	--	390 (0.4%)	--	521 (0.4%)
A (H1N1)	--	42 (24.3%)	--	169 (0.2%)	--	211 (0.2%)
A (not subtyped)	--	--	13 (100%)	90564 (99.4%)	13 (100%)	90564 (99.4%)
Influenza B	0	60 (25.8%)	42 (76.4%)	43418 (32.1%)	42 (76.4%)	43478 (32.1%)
B (Victoria)	--	2 (3.4%)	--	--	--	2 (0.0%)
B (Yamagata)	--	53 (88.3%)	--	--	--	53 (0.1%)
B (lineage not performed)	--	5 (8.3%)	42 (100%)	43418 (100%)	42 (100%)	43423 (99.9%)
Influenza (not typed)	--	--	0	515 (0.4%)	0	515 (0.4%)



Virologic Surveillance

Map of Influenza Cases (n)*
and Influenza Case Rate/100,000 By County
For Week Ending 6/2/2018

Weekly Influenza Case Rate per 100K



*Includes all lab-confirmed and positive rapid cases



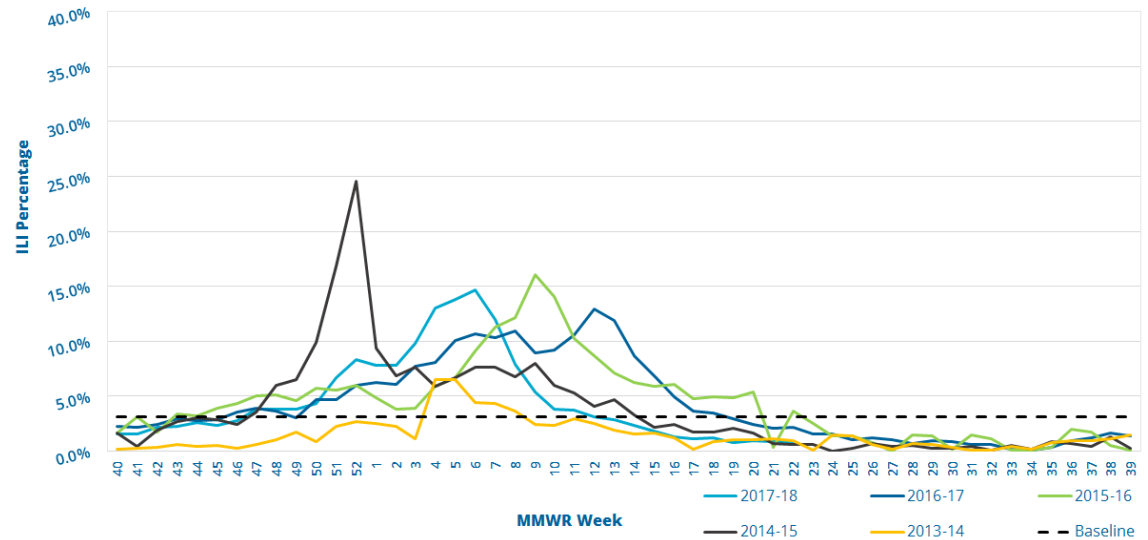
Influenza-Like Illness Surveillance

This week, the ILI activity level was **minimal** and **0.85%** of patient visits to SC ILINet providers was attributed to an influenza-like illness. This is **below** the state baseline, **3.13%**.

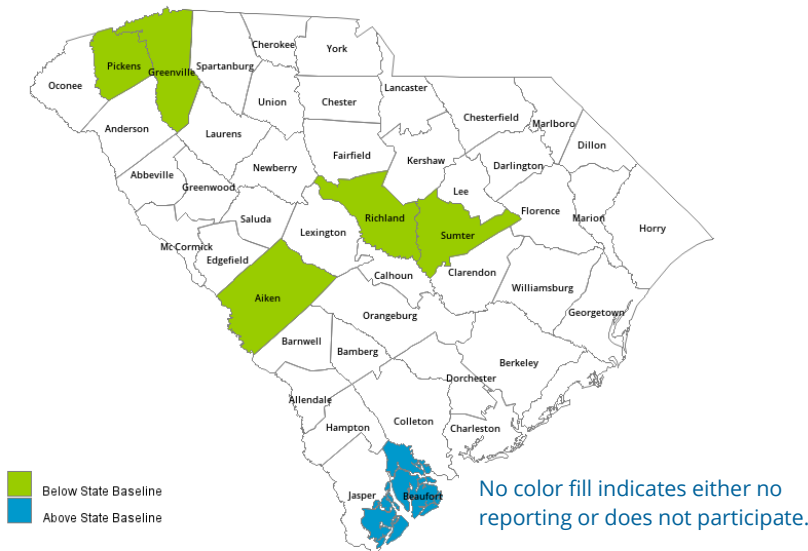
Reports were received from providers in 6 counties, representing all 4 DHEC Public Health regions.

ILI percentage is dependent upon the number of reporting providers and/or can vary by disease activity or the number of providers submitting reports.

Percentage of Influenza-Like Illness (ILI) Visits Reported by Sentinel Providers for Past and Current Seasons



County ILI Percent



State ILI Activity Level 2017-18 Calendar by Week of the Year

OCT	NOV	DEC	JAN	FEB	MAR	APR	MAY	JUN	JUL	AUG	SEP
40	44	48	1	5	9	14	18	22	27	31	35
41	45	49	2	6	10	15	19	23	28	32	36
42	46	50	3	7	11	16	20	24	29	33	37
43	47	51	4	8	12	17	21	25	30	34	38
		52			13			26			39

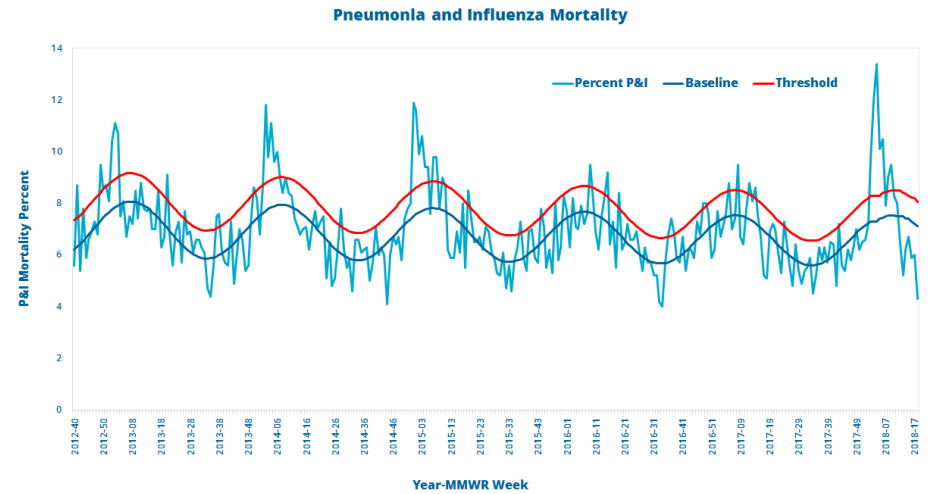
ILI ACTIVITY LEVELS: **MINIMAL** **LOW** **MODERATE** **HIGH**



Influenza-Associated Hospitalizations And Deaths

Age Group	Hospitalizations			Deaths		
	This Week	Rate per 100,000	Season Total	This Week	Rate per 100,000	Season Total
0 to 4	0	54.2	159	--	1.0	3
5 to 17	0	17.5	141	--	--	--
18 to 49	0	29.2	584	--	1.3	27
50 to 64	2	115.8	1054	--	5.0	46
65 & older	3	405.0	2559	--	31.0	196
Total	5	90.6	4497	--	5.5	272

The percentage of deaths attributed to pneumonia and influenza was 4.3%. This is **below** the epidemic threshold for the week ending May 5, 2018.



Reported Influenza-Associated Hospitalizations by Age Group, 2015-16 Season to Present

