

Geographic Spread



South Carolina reported **regional activity** this week. This is the **third** consecutive week at regional activity.



Influenza-Associated Hospitalizations and Deaths

A total of **20** influenza-associated hospitalizations were reported by 42 hospitals. The cumulative hospitalization rate is **1.5** per 100,000. There were **0** laboratory-confirmed influenza-associated deaths reported. The cumulative mortality rate is **0.02** per 100,000. Compared to the previous week, the number of reported hospitalizations **increased** by 9 (82.8%). In the current flu season, there have been **72** influenza-associated hospitalizations and **1** influenza-associated death reported.



Virologic Surveillance

A total of **356** influenza cases (**340** positive rapid antigen detection tests; **16** lab-confirmed tests) were reported from 30 counties representing all four DHEC Public Health regions. Influenza A was most frequently reported by clinical labs. Compared to the previous week, this is an **increase** of 50 cases (16.3%). In the current flu season, there have been **1,460** influenza cases (1,426 positive rapid antigen detection tests; 34 lab-confirmed tests) reported.



Influenza-Like Illness Surveillance

The percent of patient visits to sentinel providers for an influenza-like illness (ILI) was **2.62%**, which is **below** South Carolina's baseline (**3.13%**). Compared to the previous week, this is an **increase** of **0.24%**.

The ILI activity level was **low**.



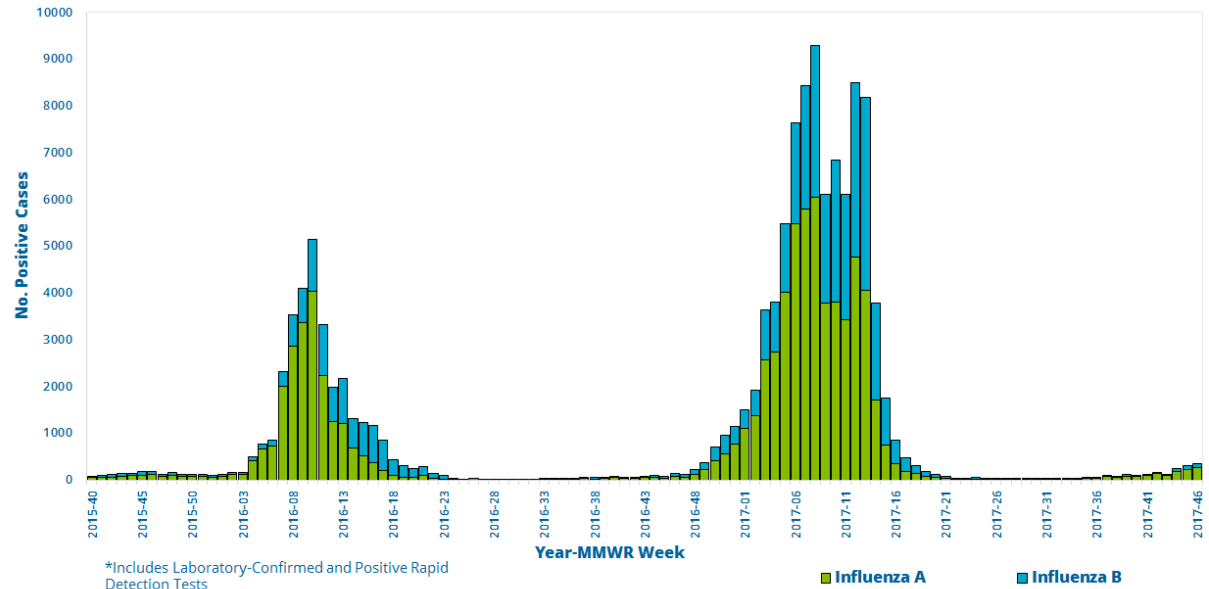
Virologic Surveillance

This week, **16** lab-confirmed cases and **340** positive rapid influenza detection tests were reported by clinical labs.

The percentage of specimens sent to the state public health lab that tested positive for influenza was **n/a**.

Influenza A was most frequently reported by clinical labs while the state public health lab did not report any positive influenza results.

Influenza Cases* Reported by Clinical and Public Health Labs, 2015-16 Season to Present



Influenza Cases Reported by Public Health and Clinical Labs, This Week and Season Total

Influenza Type	Public Health Lab		Clinical Labs		Total	
	This Week	Season Total	This Week	Season Total	This Week	Season Total
Overall	0	7	356	1453	356	1460
Influenza A	0	6 (85.7%)	268 (75.3%)	1080 (74.3%)	268 (75.3%)	1086 (74.4%)
A (H3)	--	6 (100%)	6 (2.2%)	11 (1.0%)	6 (2.2%)	17 (1.6%)
A (H1N1)	--	--	--	--	--	--
A (not subtyped)	--	--	262 (97.8%)	1069 (99.0%)	262 (97.8%)	1069 (98.4%)
Influenza B	0	1 (14.3%)	88 (24.7%)	350 (24.1%)	88 (24.7%)	351 (24.0%)
B (Victoria)	--	--	--	--	--	--
B (Yamagata)	--	1 (100%)	--	--	--	1 (0.3%)
B (lineage not performed)	--	--	88 (100%)	350 (100%)	88 (100%)	350 (99.7%)
Influenza (not typed)	--	--	0	23 (1.6%)	0	23 (1.6%)







Virologic Surveillance

Weekly Influenza Case Rate/100,000 By County



Weekly Influenza Case Rate per 100K

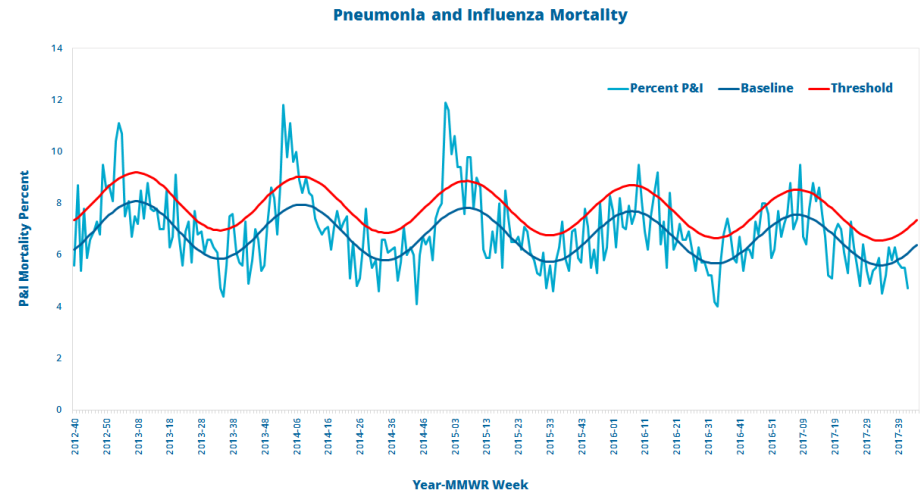
- 0 to 25 persons 
- 26 to 50 persons 
- 51 to 75 persons 
- Greater than 75 persons 



Influenza-Associated Hospitalizations And Deaths

Age Group	Hospitalizations			Deaths		
	This Week	Rate per 100,000	Season Total	This Week	Rate per 100,000	Season Total
0 to 4	0	1.0	3	--	--	--
5 to 17	0	0.3	2	--	--	--
18 to 49	4	0.6	11	--	--	--
50 to 64	2	1.5	14	--	--	--
65 & older	14	6.7	42	--	--	--
Total	20	1.5	72	1	0.02	1

The percentage of deaths attributed to pneumonia and influenza was 4.7%. This is **below** the epidemic threshold for the week ending October 21, 2017. Data for week ending October 28, 2017 is not currently available.



Reported Influenza-Associated Hospitalizations by Age Group, 2015-16 Season to Present

