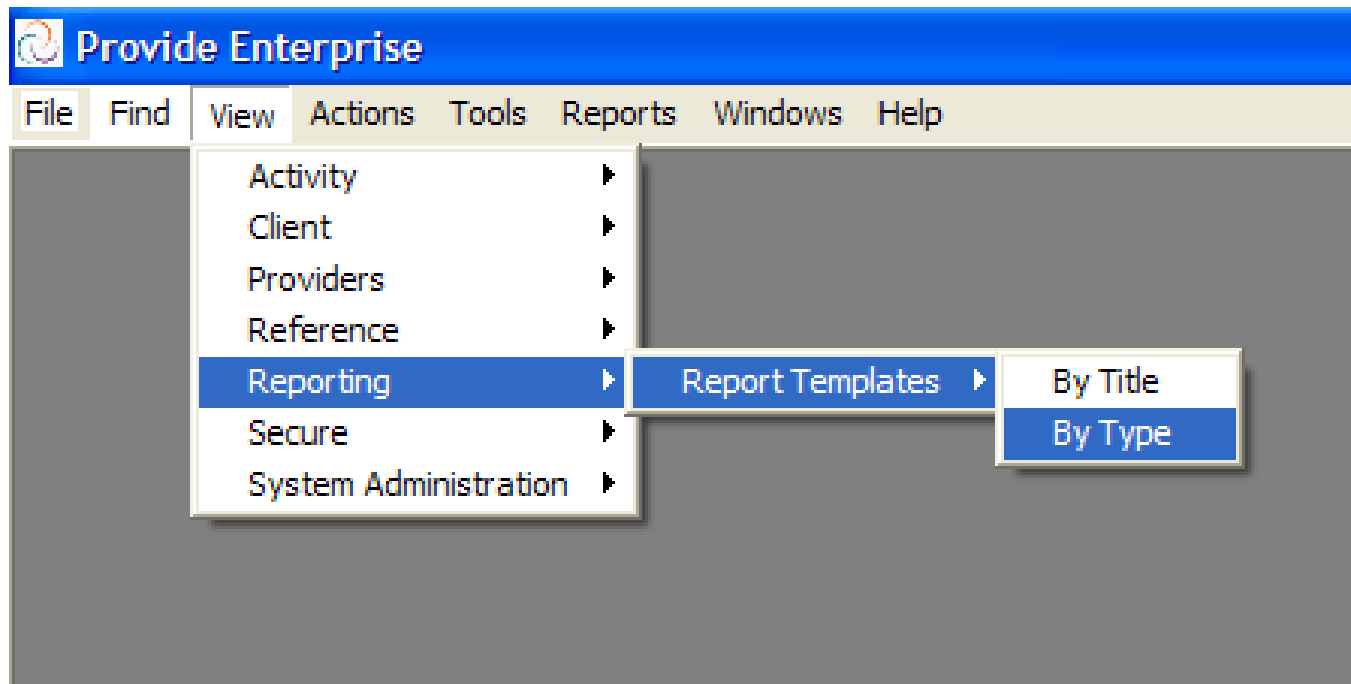


RSR Data Quality Tools in
Provide Enterprise:

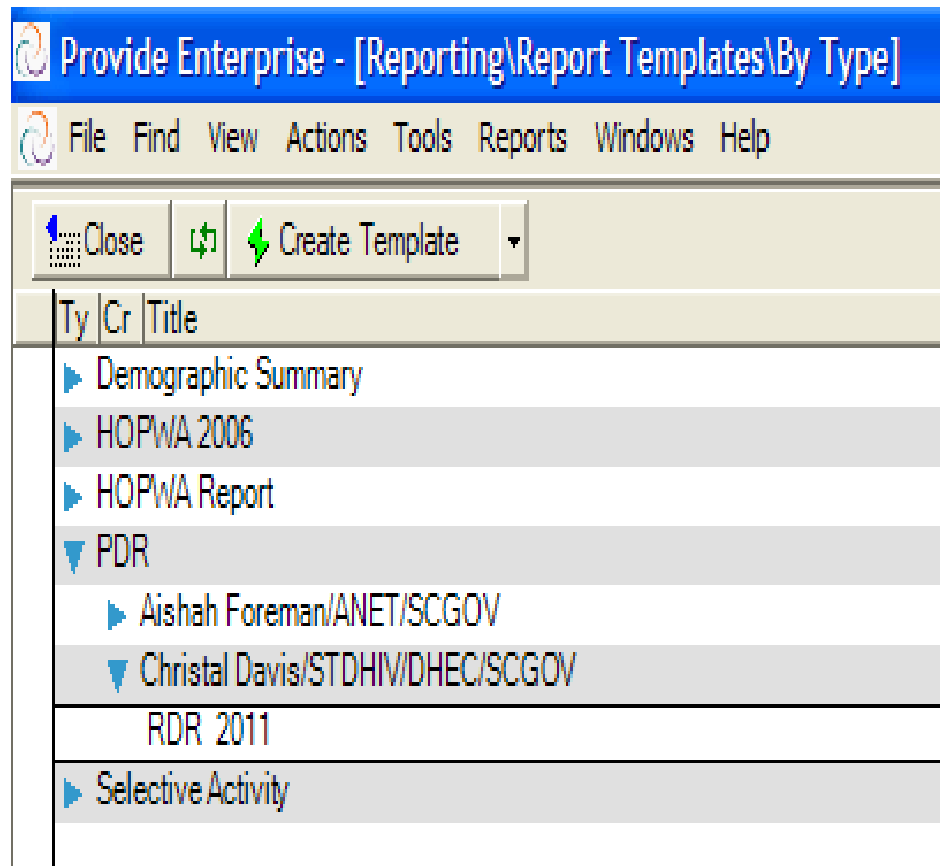
**How to run the RSR Completeness
Assessment
(SC Version)**



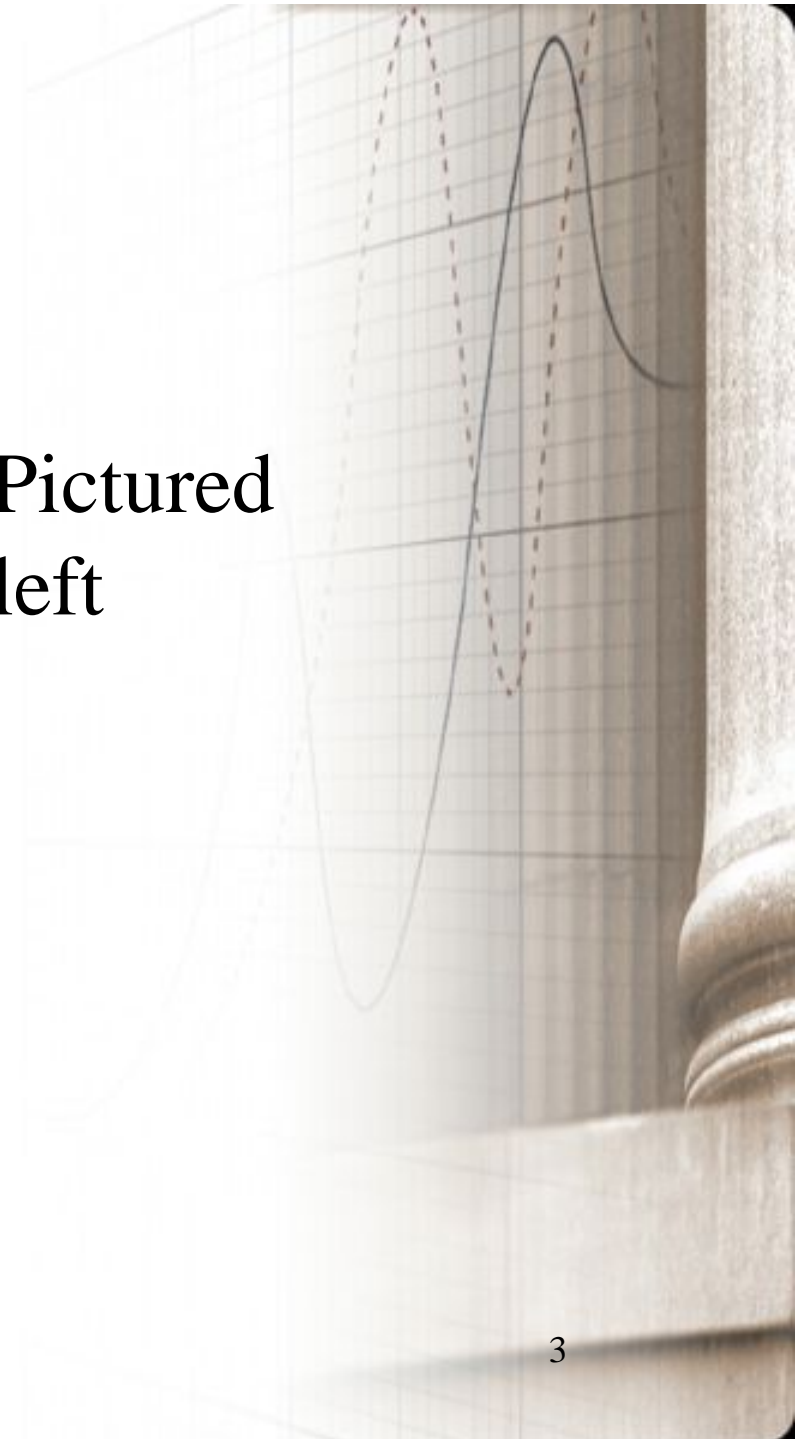
Locate your PDR template in *Provide Enterprise*.



Choose your PDR (RDR) template.



- Pictured left



Once inside of the template,
click the “Edit” button.



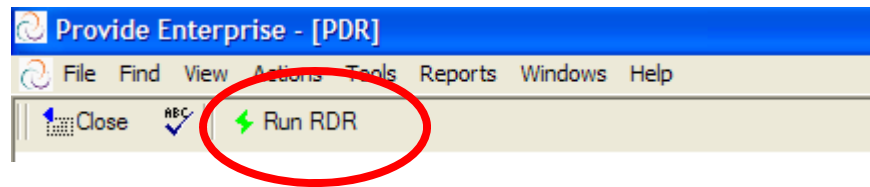
- Circled above

Your template should mirror the screen below.

The screenshot shows the 'Provide Enterprise - [PDR]' application window. The menu bar includes File, Find, View, Actions, Tools, Reports, Windows, and Help. The toolbar contains 'Close', 'REC', and 'Run RDR'. The main window is titled 'PDR' and has tabs for Settings, Data Sources, Section 1, Section 3, Section 4, Section 5, Section 6, and Section 7. The 'Settings' tab is active, displaying a list of configuration options:

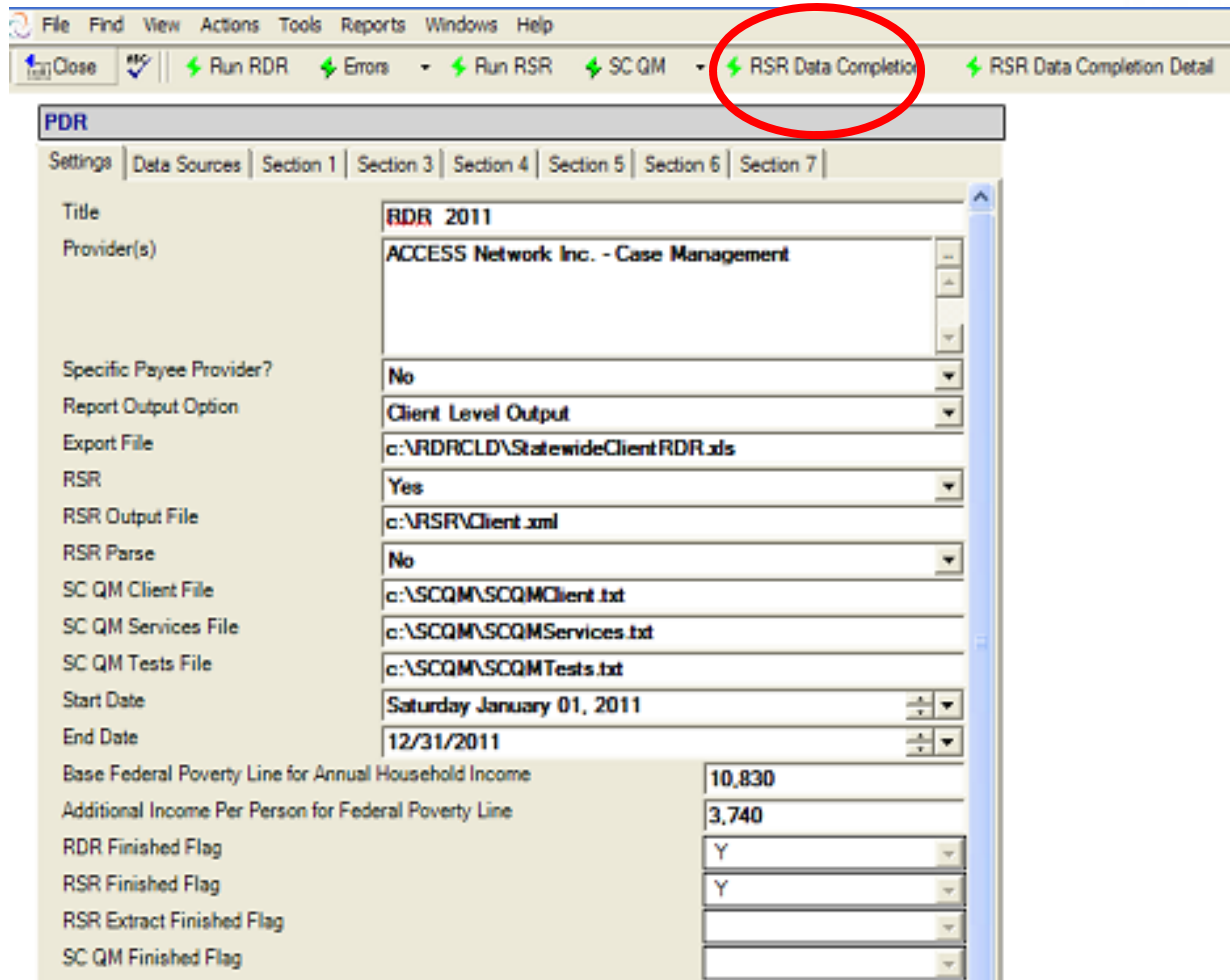
Title	RDR 2011
Provider(s)	ACCESS Network Inc. - Case Management Your agency here
Specific Payee Provider?	No
Report Output Option	Client Level Output
Export File	c:\RDRCLD\StatewideClientRDR.xls
RSR	Yes
RSR Output File	c:\RSR\Client.xml
RSR Parse	No
Start Date	Saturday January 01, 2011
End Date	12/31/2011
Base Federal Poverty Line for Annual Household Income	10,830
Additional Income Per Person for Federal Poverty Line	3,740
RDR Finished Flag	
RSR Finished Flag	
RSR Extract Finished Flag	
SC QM Finished Flag	

Click the “Run RDR” button.



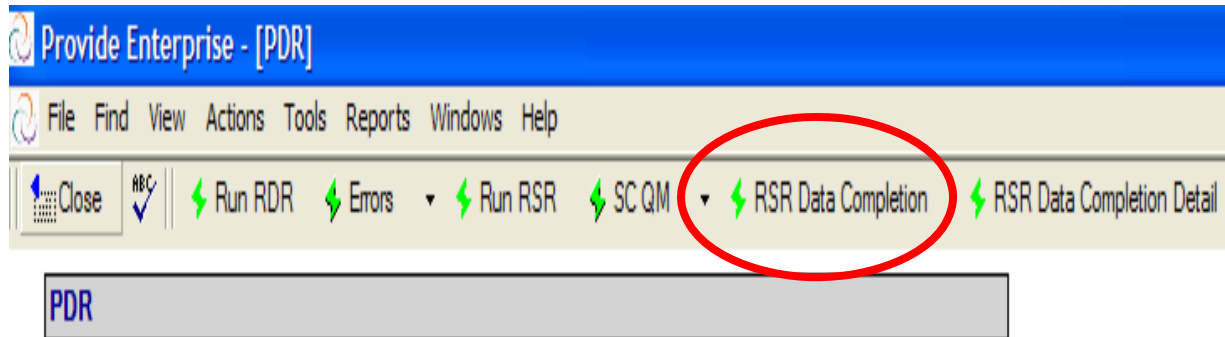
- Circled above

Click the “RSR Data Completion” button.



- Circled above

Zoom View (from previous step)



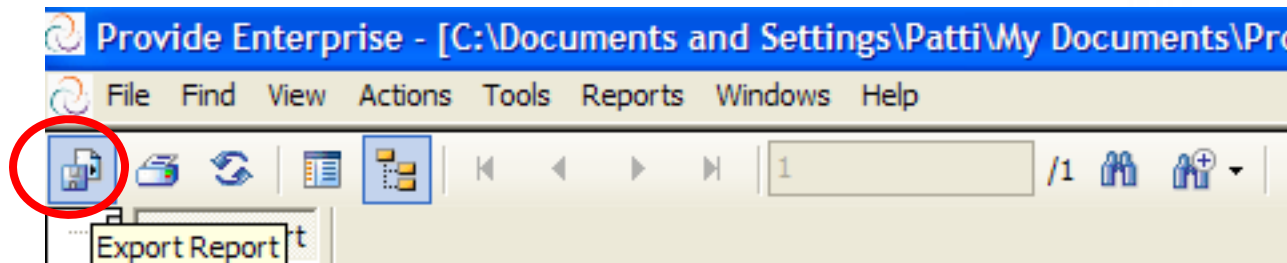
- Circled above

RSR Data Completion Assessment in *Provide Enterprise (SC Version)*

RSR Data Completion

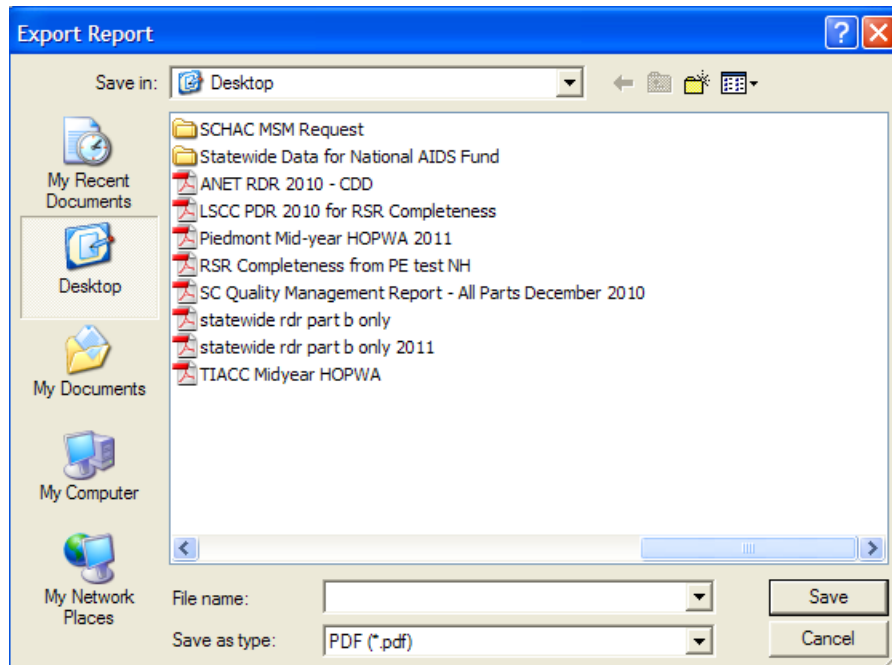
Data Element	Total Clients Reported	Required Clients for Date Element	# Clients with Known Value Reported	% Clients with Known Value Reported	# Clients with Unknown Value Reported	% Clients with Unknown Value Reported	# Clients with No Value Reported	% Clients with No Value Reported
FirstServiceDate	247	247	247	100.00 %	0	0%	0	0.00%
EnrollmentStatus	247	247	244	98.79 %	3	1.21%	0	0.00%
DeathDate	247	5	5	100.00 %	0	0%	0	0.00%
BirthYear	247	247	247	100.00 %	0	0%	0	0.00%
Ethnicity	247	247	247	100.00 %	0	0.00%	0	0.00%
Race	247	247	247	100.00 %	0	0.00%	0	0.00%
Gender	247	247	247	100.00 %	0	0.00%	0	0.00%
Transgender	247	0	0	0.00%	0	0%	0	0.00%
PovertyLevel	247	247	247	100.00 %	0	0.00%	0	0.00%
HousingStatus	247	247	245	99.19 %	2	0.81%	0	0.00%
GeographicUnitCode	247	247	247	100.00 %	0	0.00%	0	0.00%
HIVStatus	247	247	246	99.60 %	0	0.00%	1	0.40%
AidsDiagnosisYear	247	74	74	100.00 %	0	0%	0	0.00%
HivRiskFactor	247	247	243	98.38 %	1	0.40%	3	1.21%
MedicaidInsurance	247	247	245	99.19 %	0	0.00%	2	0.81%

To Save the Report, click the “Export” button.



- Circled above.

Change the “Save As Type” to your desired format and “Save” to desired location.



- Pictured left.

Experiencing Issues?

Contact the GTI (Provide)
Help Desk.

Email:

provide.help@grouptech.com

(do not include client information
to this address)

