

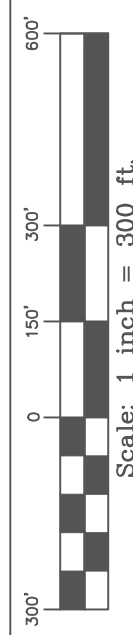
*Kennedy Consulting Services, LLC*  
*Craig Kennedy, P.G.*

**KCS**  
 Office:  
 403 Seaside Court  
 Lexington, SC 29072  
 P.O. Box 364 Irmo, SC 29063  
 Tel. (803) 399-1133  
 Cell (803) 960-2562  
 craigkennedy.KCS@gmail.com

**Buist Mine**  
**Reclamation Map**

Prepared for  
**Allston Farrell LLC**

**Charleston County, South Carolina**



No.	Revision	Date	By
1	Mod 22-1: Increased mined area	9/13/21	

Project No. KCS 16-21	Date: 1/15/18
Approved by: RCK	Drawn by: BC
Sheet No. 2 of 2	