

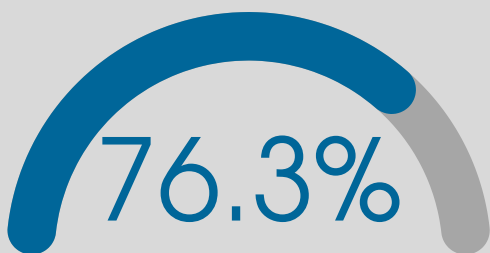
COVID-19 AND THE IMPACT ON WORKING WOMEN IN SOUTH CAROLINA

APRIL 2022

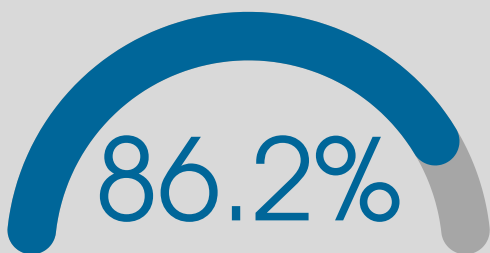
54.7% OF ALL SOUTH CAROLINA
COVID-19 CASES ARE
FEMALE

Most of the cases are women of working and child rearing age, with an average age of **38.5 years** and median age of **37.0 years**.

Of the **2,143,769 adult women** (18+) living in South Carolina, **52.9%** work often in service-oriented industries being hit the hardest by COVID-19

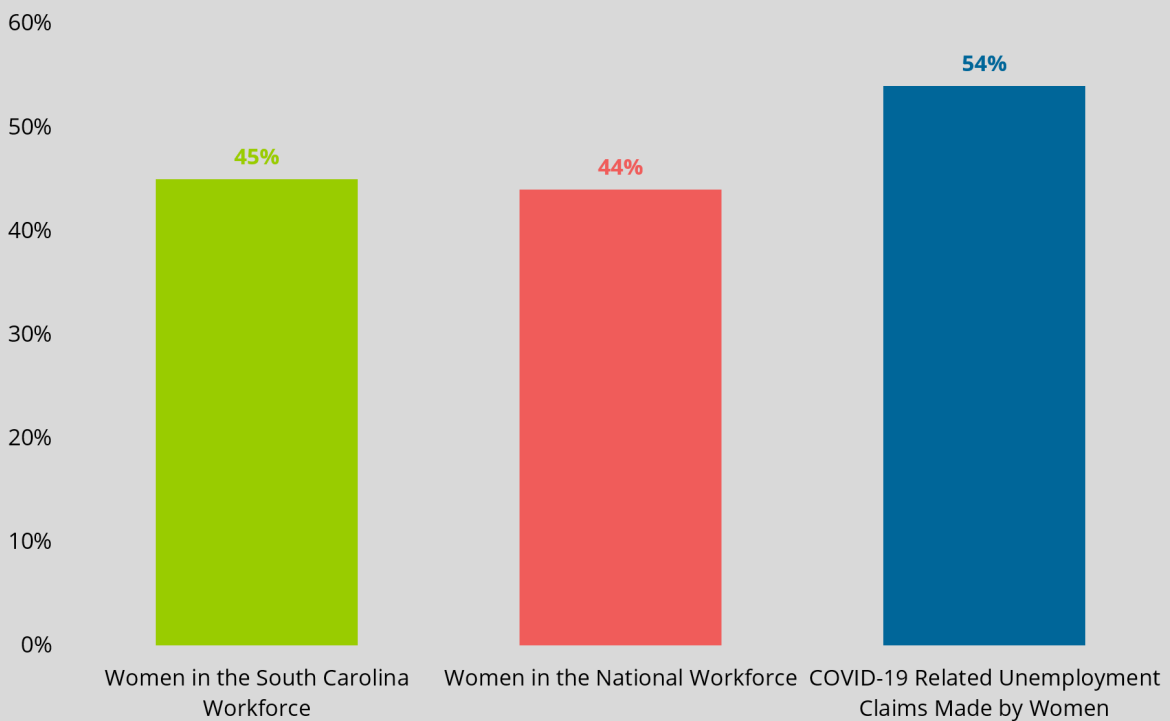


of the South Carolina workforce employed in educational services, health care, and social assistance is female



of all South Carolina COVID-19 cases among healthcare workers are female

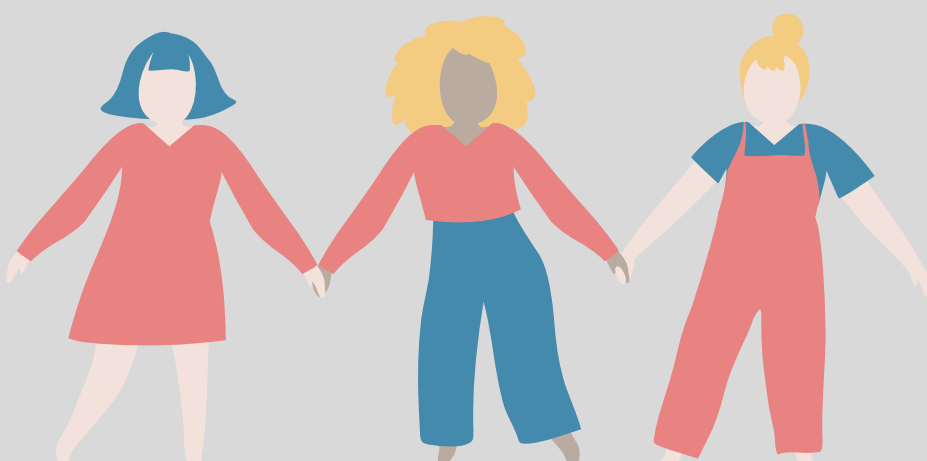
COMPARING PRE-COVID WORKFORCE TO COVID-19 RELATED UNEMPLOYMENT AMONG WOMEN



Prior to COVID-19, women comprised **44%** of the national workforce and **45%** of South Carolina's workforce.

Yet, **54%** of all COVID-19 related unemployment claims come from women.

This translates to **402,071** jobs held and lost by South Carolina women this year.



EXTERNAL DATA SOURCES

S.C. DEPARTMENT OF EMPLOYMENT AND WORKFORCE, "SOUTH CAROLINA 2019 ECONOMIC ANALYSIS REPORT," JUNE 30, 2019,
U.S. CENSUS BUREAU AMERICAN COMMUNITY SURVEY, 2019.

COVID-19 AND THE IMPACT ON WORKING WOMEN IN SOUTH CAROLINA

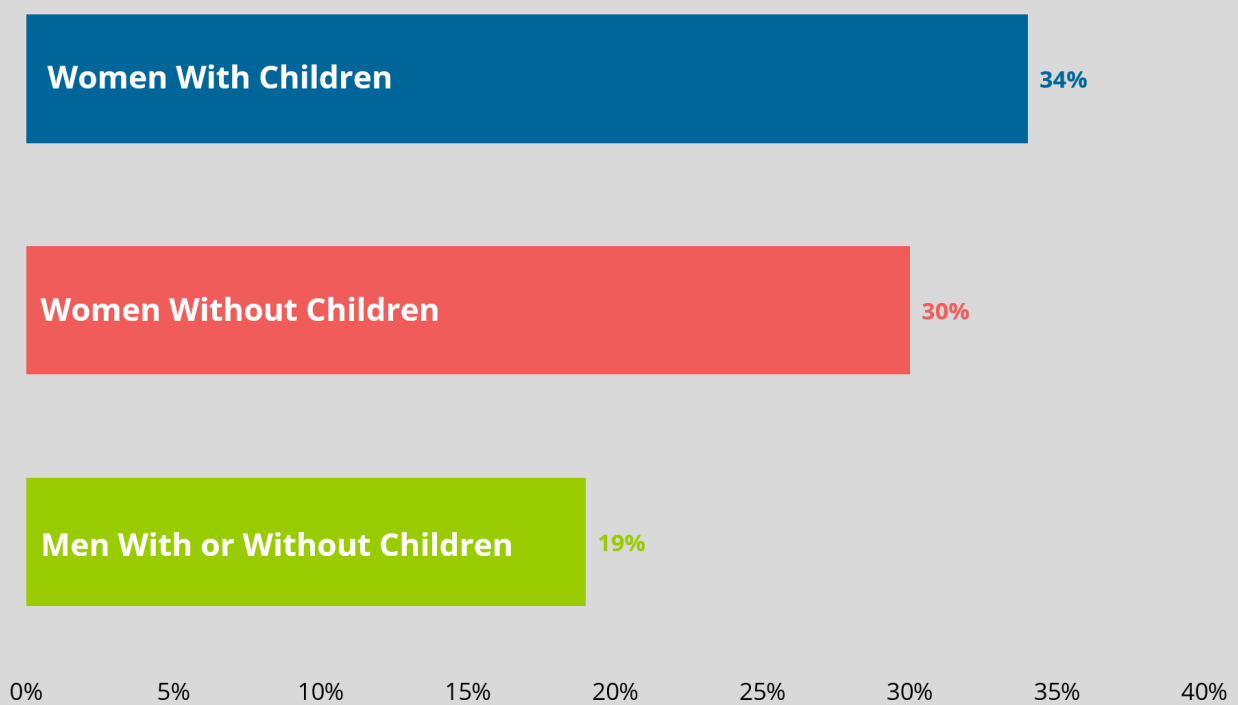


Women aged 25-44 are almost **3 times more likely** than men to not be working due to COVID-19 related childcare issues.



In June, **1 in 3 working mothers** reported they were the only ones providing care for their children, compared to **1 in 10 men**.

MEN AND WOMEN REPORTING EMOTIONAL DISTRESS DURING COVID-19 (SUMMER 2020)



The **gap in percent** of men and women experiencing levels of **anxiety** and **depression** is widening during COVID-19.

The highest levels (34%) are found in women with children. This translates to between **632,080 and 716,358 South Carolina women** currently experiencing emotional and/or psychological distress.



Women in the workforce are **more susceptible to COVID-19 related economic hardships**, particularly related to the **imbalanced burden of childcare-related issues**.



DATA AS OF 11:59 PM ON 4/2/2022
DATA ARE PROVISIONAL.

EXTERNAL DATA SOURCES

U.S. CENSUS BUREAU, "PARENTS JUGGLE WORK AND CHILD CARE DURING PANDEMIC," AUGUST 18, 2020
USC, "COVID-19 HAS HIT WOMEN HARD, ESPECIALLY WORKING MOTHERS," JUNE 18, 2020