

COVID-19 IN RURAL SOUTH CAROLINA

18.9%

of all COVID-19 cases

23.3%

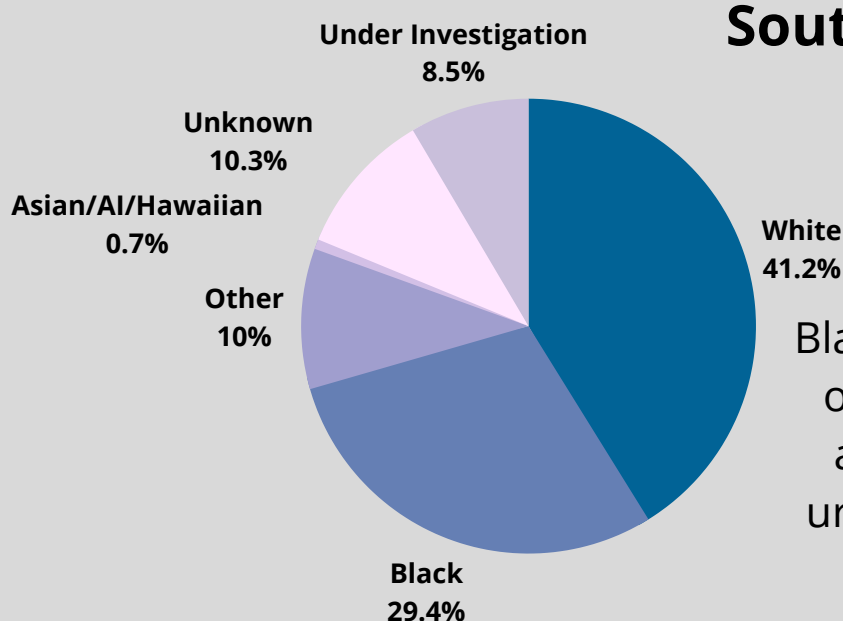
of all hospitalizations

23.8%

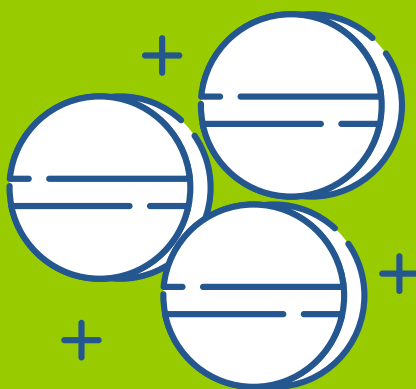
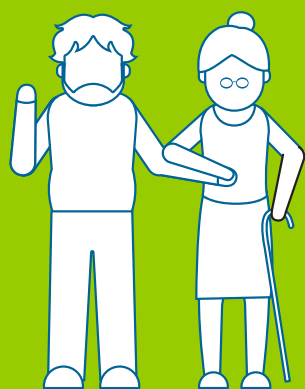
of all COVID-19 deaths

Rural areas in South Carolina see higher rates of COVID-19 cases, hospitalizations, and deaths

COVID-19 in Rural South Carolina, by Race



Blacks see higher rates of COVID-19 in rural areas compared to urban areas (29.4% in rural vs. 18.8% in urban)



Individuals living in rural South Carolina who are diagnosed with COVID-19 are on average, older, with more comorbid conditions, and more likely to be hospitalized when compared to those in urban areas.



COVID-19 has disproportionately affected those living in rural areas. Individuals are seeing higher rates of cases, hospitalizations, and deaths.

It is important for individuals in rural areas to get vaccinated to help reduce the spread.