



# Agency Overview

June 18, 2021



# History

## Timeline

- **1878 – Lawmakers created the first State Board of Health** after a series of yellow fever outbreaks killed 20,000 Americans
  - **1950 – Fish kills and polluted streams prompted lawmakers to add a Water Pollution Control Authority Board** to the State Board of Health
  - **1965 – Air pollution control was added** to the State Board of Health and **the environmental arm was renamed the Pollution Control Authority**
- **1970 – The Pollution Control Authority was split off from the State Board of Health** into a separate organization
- **July 1, 1973 – The State Board of Health and the Pollution Control Authority were reunited to form DHEC**

# History

## Timeline (continued)

- **July 1, 1973 – The State Board of Health and the Pollution Control Authority were reunited to form DHEC**
  - **1978 – Legislators added hazardous waste management** to DHEC's responsibilities
  - **1993 – Legislators transferred three state agencies to DHEC:**
    - **South Carolina Coastal Council,**
    - **Water Resources Commission,** and
    - Part of the **State Land Resources Conservation Commission**

# DHEC's Role Today

- **Mission:** To improve the quality of life for all South Carolinians by promoting and protecting the health of the public and the environment
- **Vision:** Healthy people living in healthy communities

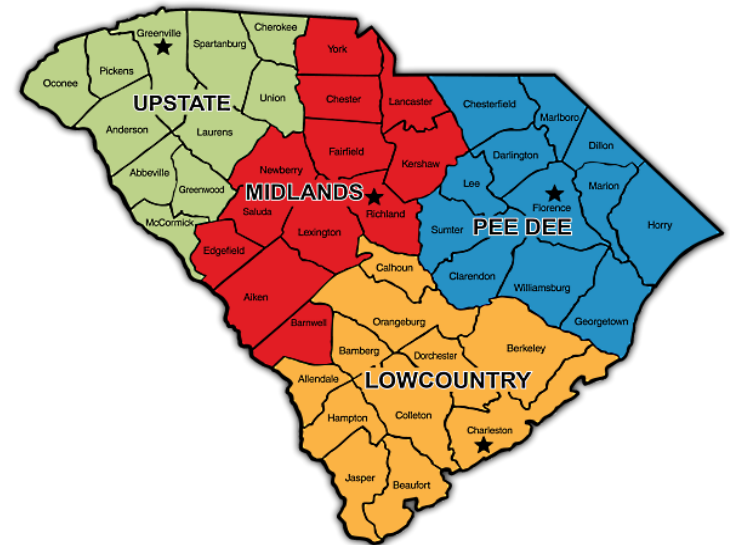
# 1 of 3 States

**Three states currently align health and environmental services into one authority:**

- Colorado
- Kansas
- South Carolina

# DHEC Overview

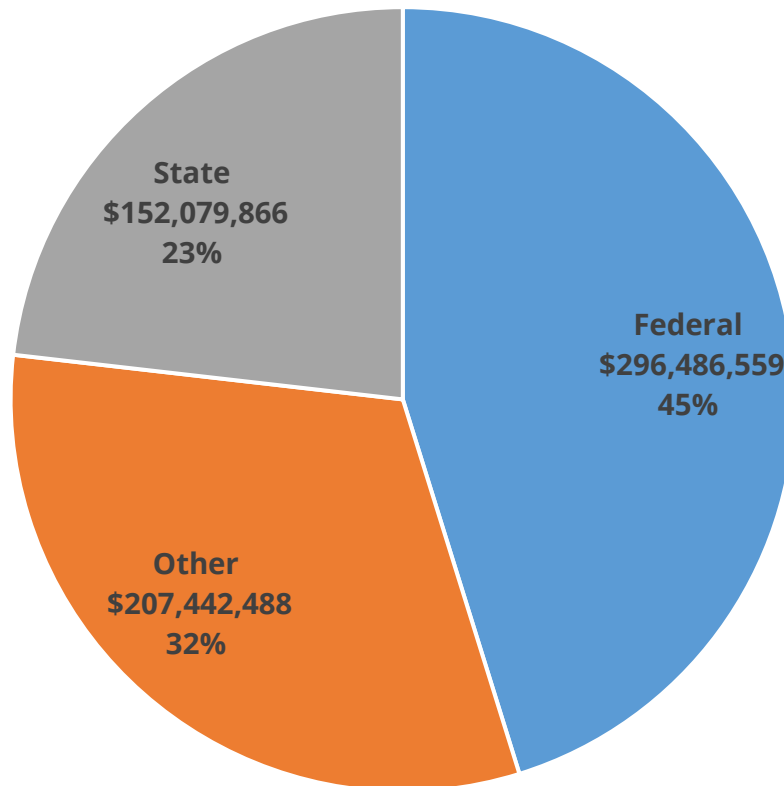
- South Carolina's public health and environmental protection agency
- Oversight by the Board
- Operation and management provided by a Director and an Executive Leadership Team
- A **centralized** structure with **four regions** managing operations in all **46 counties**





# Financial Overview

## DHEC FY2020 Expenditures by Source of Funds



# South Carolina Board of Health and Environmental Control

- Consists of eight members, one from each congressional district, and a Chairman from the state at large
- The Board is empowered to make, adopt, disseminate and enforce reasonable rules and regulations for the promotion of public health and the reduction, control and prevention of pollution



# Current Model: Health and Environmental Control in One Agency

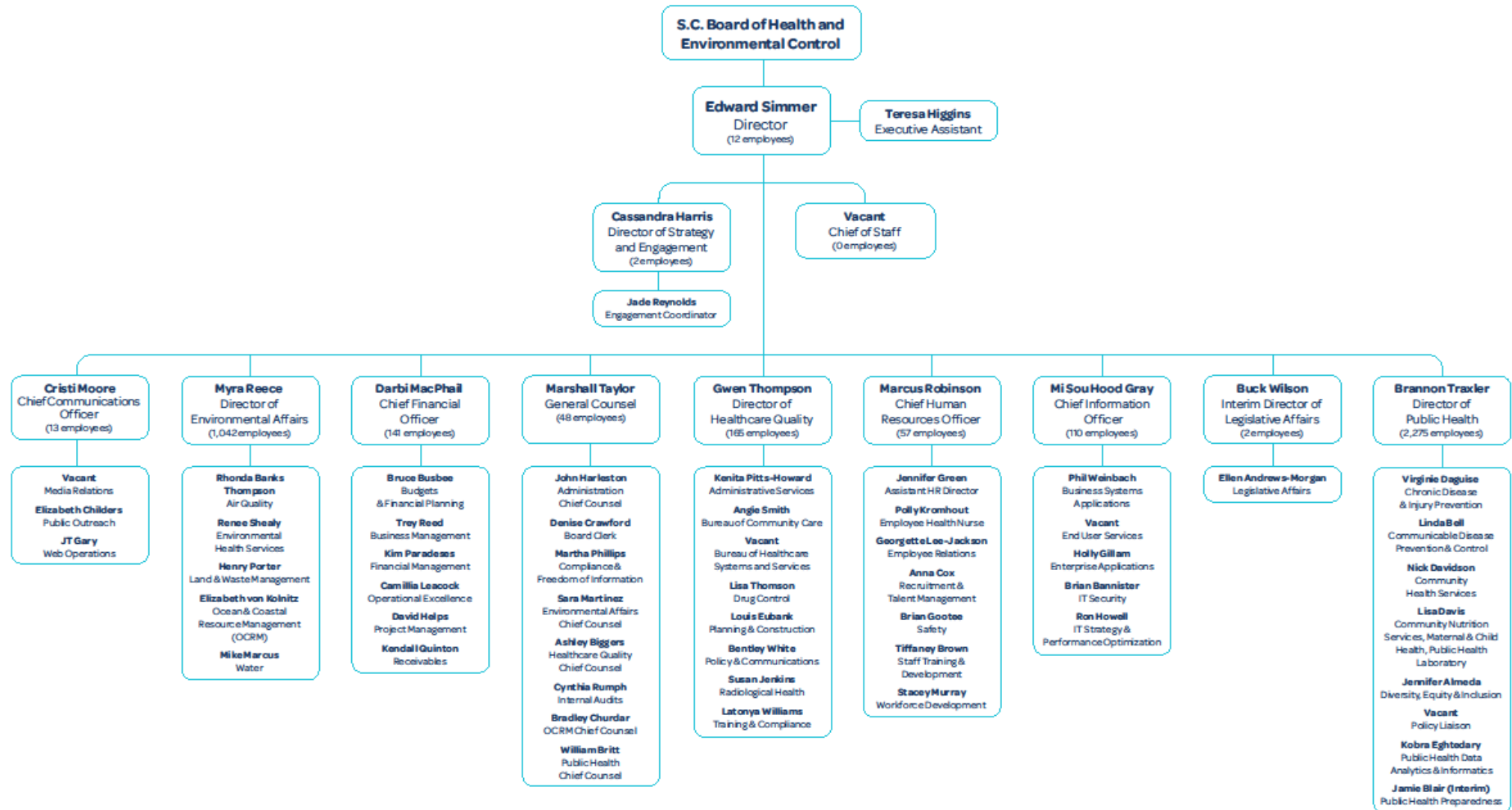
**DHEC is structured to support an integrated response mutually beneficial for the health and safety of people and environment**

- **Major events/outbreaks:**

- COVID-19
- Hurricanes/natural disasters
- Statewide Hepatitis A outbreak
- Train derailments
- 2017 Zika Virus response
- Hazardous substance releases
- Landfill fires

- **Everyday responses:**

- Lead exposures
- Food-borne illnesses
- Harmful algal blooms
- Rabies incidents
- Vector-borne illnesses
- Drinking water emergencies
- Radiation protection
- Sanitary sewer overflows





# DHEC by the Numbers

## DHEC Team

- Currently **over 3,800 employees strong**
  - 3,058 full-time
  - 906 hourly
  - 2 time-limited
  - Plus 722 vacancies
- Operating 105 facilities in **46 counties** across the state

## Legal Responsibilities

- DHEC legal responsibilities currently touch on **more than 360** state and federal statutes and regulations as well as state provisos

# Day-to-Day Operations

## DHEC in an average year: **Environmental Affairs**

- **Over 50,000** active environmental permits
- **Nearly 100,000** environmental inspections
- **24,511** environmental health complaints investigated
- On average **2,300 dams** subject to regulation
- Ocean and Coastal Resource Management preserves sensitive and fragile areas while promoting responsible development in our state's **8 coastal counties**



# Day-to-Day Operations

## Healthcare Quality

- **Over 2,000** healthcare facilities and services inspected and investigated
- **Over 12,000** licensed and certified health professionals
- **25,788** Prescription Monitoring Program (PMP) users registered
- Oversight of many types of facilities, services, and providers, including:
  - hospitals
  - controlled substances
  - EMS
  - radioactive materials
  - nursing homes
  - tattoo facilities
  - athletic trainers
  - medical labs
  - assisted living facilities
  - body piercing facilities
  - x-ray machines
  - hospice
  - home health
  - tanning beds

# Day-to-Day Operations

## Public Health

- **Over half a million** clinical client encounters in our local health departments
- **Hundreds** of acute disease outbreak investigations conducted
- **Tens of thousands** of reports of acute diseases reviewed
- **Over 3 million** public health laboratory tests performed
- **More than a quarter million** birth and death records filed
- Oversight of **7 million tests** and more than **3 million vaccinations for COVID-19**

# Overview of Major Program Areas

## Environmental Affairs

- **FY20 Expenditures: \$149,243,835** (23% of total)
  - Federal: \$26,466,076
  - Other & Restricted: \$75,161,368
  - State: \$47,616,391
- **Approximate number of employees: 1,042**



# Overview of Major Program Areas

## Environmental Affairs – 4 Bureaus; 1 Office

- **Air Quality (FY20 – \$9,516,608)**

- Develops and implements strategies to maintain the quality of South Carolina's air.

This includes activities such as:

- reviewing permit applications and issuing air quality construction and operating permits;
    - modeling, technical assistance and daily ozone forecasts;
    - implementing federal and state air toxics programs;
    - conducting compliance assistance and assurance;
    - implementing the state's asbestos program; and
    - educating South Carolinians on air quality issues.

# Overview of Major Program Areas

## Environmental Affairs – 4 Bureaus; 1 Office

- **Environmental Health Services (FY20 – \$39,583,156)**
  - Manages and implements DHEC's onsite wastewater, rabies prevention, food protection, dairy and manufactured food, laboratory certification and oil, chemical, and nuclear emergency response programs. It also supports our air, land and water programs through regional offices and a central laboratory. This includes:
    - inspecting permitted facilities;
    - conducting ambient monitoring of air and water;
    - providing compliance assistance;
    - issuing food and septic tank permits;
    - responding to foodborne outbreak investigations;



# Overview of Major Program Areas

## Environmental Affairs – 4 Bureaus; 1 Office

- **Environmental Health Services (FY20 – \$39,583,156)**
  - Bureau activities (continued):
    - monitoring shellfish harvesting areas;
    - investigating animal bites;
    - responding to citizen complaints about actual or potential release of pollutants into the air, land or water;
    - providing validated data for environmental decision-making; and
    - providing response to chemical and oil spills, fish kills, and radiological emergencies.

# Overview of Major Program Areas

## Environmental Affairs – 4 Bureaus; 1 Office

- **Land & Waste Management (FY20 – \$61,616,508)**
  - Coordinates mining and waste-related activities and implements assessment and corrective actions for contaminated sites. This includes:
    - providing technical assistance for the proper management of solid and hazardous waste;
    - issuing permits for solid waste and mining activities as well as underground storage tanks;
    - promoting waste reduction and recycling through technical assistance and education awareness programs; and
    - overseeing the investigation, remediation and cleanup of contamination from Superfund, dry-cleaning, above-ground storage tanks and brownfield sites.



# Overview of Major Program Areas

## Environmental Affairs – 4 Bureaus; 1 Office

- **Water (FY20 – \$30,429,457)**
  - Helps ensure that South Carolina's waters are drinkable, swimmable, and fishable through regulatory and voluntary programs to control point and nonpoint sources of pollution. This includes:
    - permitting wastewater discharges from industrial and domestic sources;
    - implementing the state revolving fund program;
    - issuing stormwater permits for construction sites, municipal systems and industrial sites;
    - developing state water quality standards and corrective action plans for polluted waters;

# Overview of Major Program Areas

## Environmental Affairs – 4 Bureaus; 1 Office

- **Water (FY20 – \$30,429,457)**
  - Bureau activities (continued):
    - issuing water quality certifications for certain discharge activities;
    - implementing private well regulations;
    - issuing water quantity withdrawal permits and implementing groundwater protection programs; and
    - conducting water quality monitoring and modeling.

# Overview of Major Program Areas

## Environmental Affairs – 4 Bureaus; 1 Office

- **Ocean & Coastal Resource Management (FY20 – \$8,098,107)**
  - Preserves sensitive and fragile areas while promoting responsible development in the eight coastal counties of South Carolina.
  - Implements the SC Coastal Zone Management Program to protect tidally influenced critical area lands, waters, and beaches through direct permitting of beachfront activities and wetland alterations, and certification of all federal and state permits.
  - Provides coastal data and information to the public for enhanced decision-making; and offer technical, planning, and financial assistance to local governments to resolve complex natural resource management issues.





# Overview of Major Program Areas

## Healthcare Quality

- **FY20 Expenditures: \$26,390,146** (4% of total)
  - Federal: \$7,179,191
  - Other & Restricted: \$8,134,594
  - State: \$11,076,361
- **Approximate number of employees: 165**

# Overview of Major Program Areas

## Healthcare Quality – 5 Bureaus

- **Community Care (FY20 – \$6,567,859 (Licensing) and \$6,301,191 (Certification))<sup>1</sup>**
  - Protects the health, safety, and welfare of vulnerable adults and children residing in long term care and residential facilities. This includes:
    - Overseeing health and safety standards for nursing homes, assisted living facilities, intermediate care facilities, residential treatment facilities for children and adolescents and crisis stabilization unit facilities;
    - Inspecting and investigating facilities to ensure compliance with health and safety standards; and
    - Providing consultations, compliance assistance and training and educational opportunities for the regulated community.

<sup>1</sup> These are the FY20 expenditures for the former Bureau of Health Facilities Licensing and the former Bureau of Certification.

# Overview of Major Program Areas

## Healthcare Quality – 5 Bureaus

- **Drug Control (FY20 – \$4,282,682)**
  - Promotes and protects public health through enforcement of South Carolina's Controlled Substances Act and related laws and regulations. This includes:
    - Overseeing persons and entities that manufacture, distribute, or dispense controlled substances;
    - Decreasing the diversion of controlled substances from legal sources by effecting and maintaining a closed system of distribution; and
    - Administering the state's prescription monitoring program (PMP) to monitor the prescribing and dispensing of all Schedule II, III, and IV controlled substances by licensed professionals such as doctors, pharmacists, dentists, and veterinarians and to monitor the administering of opioid antidotes.

# Overview of Major Program Areas

## Healthcare Quality – 5 Bureaus

- **Healthcare Systems and Services (FY20 – \$6,460,073)<sup>2</sup>**
  - Ensures oversight of pre-hospital and hospital care, medical care providers and health professionals and services. This includes:
    - Developing and implementing regulatory systems for quality emergency medical care, credentialing Emergency Medical Services (EMS) agencies, vehicles, personnel, instructors and training programs;
    - Overseeing hospitals and levels of care for trauma, stroke and perinatal services they provide; and
    - Ensuring medical and service providers comply with state and federal health, safety and sanitation standards.

<sup>2</sup>These are the FY20 expenditures for the former Bureau of EMS and Trauma.



# Overview of Major Program Areas

## Healthcare Quality – 5 Bureaus

- **Planning & Construction (FY20 – \$473,475)**
  - Authorizes the implementation or expansion of health care facilities and services in South Carolina; and
  - Reviews plans, specifications and construction for health care facilities licensed by the state.

# Overview of Major Program Areas

## Healthcare Quality – 5 Bureaus

- **Radiological Health (FY20 – \$2,304,867)**
  - Controls and regulates sources of ionizing and non-ionizing radiation with the goal of ensuring public and worker health and safety. This includes:
    - Overseeing and inspecting medical, industrial, and academic facilities that possess and use radioactive materials, facilities that use x-ray equipment and facilities that use mammography equipment;
    - Investigating consumer complaints at facilities that use tanning equipment; and
    - Maintaining an Emergency Radiological Assistance Team capable of responding to any incident involving facilities that possess and use radioactive material.



# Overview of Major Program Areas

## Public Health

- **FY20 Expenditures: \$455,218,043** (69% of total)
  - Federal: \$262,832,334
  - Other & Restricted: \$108,701,653
  - State: \$83,684,056
- **Approximate number of employees: 2,275**





# Overview of Major Program Areas

## Public Health – 7 Bureaus, 1 State Laboratory, & 4 Regions

- **Chronic Disease & Injury Prevention (FY20 – \$19,174,415)**
  - Houses community-oriented prevention services and works with the CDC, local health departments, and numerous stakeholders to prevent disease and injury and promote healthy lifestyles.
  - CD&IP is comprised of five divisions:
    - Cancer Prevention and Control
    - Diabetes and Heart Disease Management
    - Injury and Opioid Abuse Prevention
    - Oral Health
    - Tobacco Prevention and Control

# Overview of Major Program Areas

## Public Health – 7 Bureaus, 1 State Laboratory, & 4 Regions

- **Communicable Disease Prevention & Control (FY20- \$161,814,025)**
  - Works to prevent and control communicable diseases and illnesses in SC.
  - Disease Control is comprised of five divisions:
    - Acute Disease Epidemiology (DADE) which includes the Medical Consultants Section
    - Sexually Transmitted Diseases/HIV
    - Immunization and Prevention
    - Tuberculosis Control
    - Surveillance and Technical Support



# Overview of Major Program Areas

## Public Health – 7 Bureaus, 1 State Laboratory, & 4 Regions

- **Community Nutrition Services (FY20 – \$73,174,277)**
  - Works to increase DHEC's impact on public health across the state as it relates to healthy eating and obesity prevention.
  - CNS is comprised of three divisions:
    - Special Supplemental Nutrition Program for Women, Infants and Children (WIC)
    - Division of Nutrition, Physical Activity and Obesity
    - Public Health Nutrition Practice and Special Nutrition Assistance Program Education (SNAP-Ed)



# Overview of Major Program Areas

## Public Health – 7 Bureaus, 1 State Laboratory, & 4 Regions

- **Maternal & Child Health (FY20 – \$25,094,539)**
  - Promotes the health of women, children, and infants by providing health care services and programs, linking community services and facilitating systems of care for pregnant women and infants.
  - MCH is comprised of three divisions:
    - Children's Health and Perinatal Services
    - Women's Health
    - Children and Youth with Special Health Care Needs



# Overview of Major Program Areas

## Public Health – 7 Bureaus, 1 State Laboratory, & 4 Regions

- **Public Health Preparedness (FY20 – \$8,449,100)**
  - Works with DHEC staff and community partners to prepare for public health emergencies. Prepares all hazards plans, policies and procedures and conducts training and exercises to support DHEC's preparedness. Also works with communities to prevent and respond to public health emergencies.
- **Public Health Data Analytics and Informatics (FY20 - \$4,215,590)**
  - Collects and analyzes public health data and assists internal and external partners at the state and local levels with data-driven decisions in public health.
  - PHDAI is comprised of four divisions: Cancer Registry, National Violent Death Reporting System Program, Population Health Surveillance, Informatics and Data Analytics.



# Overview of Major Program Areas

## Public Health – 7 Bureaus, 1 State Laboratory, & 4 Regions

- **Laboratory (FY20 – \$18,661,991)**
  - The Public Health Laboratory (PHL) provides specialized diagnostic and analytical laboratory testing for accurate screening, diagnosis, prevention and surveillance of disease, foodborne illness, and newborn congenital disorders to improve public health and the quality of life for the State of South Carolina.
  - The **annual workload for FY18** was approximately **1,006,407 specimens** and **994,605 laboratory reports**.
  - PHL provided oversight of **7 million COVID-19 tests**



# Overview of Major Program Areas

## Public Health – 7 Bureaus, 1 State Laboratory, & 4 Regions

- **Community Health Services (FY20 – \$144,634,107)**
  - Responsible for ensuring the safe and effective operation of health departments and vital records offices around the state.
  - DHEC **offers public health services at 76 public health clinics and 16 vital records offices**, and is organized into four public health regions:
    - Lowcountry
    - Midlands
    - Pee Dee
    - Upstate



# Overview of Major Program Areas

## Public Health – 7 Bureaus, 1 State Laboratory, & 4 Regions

- **Diversity, Equity and Inclusion Office (New)**
  - DHEC is committed to building upon existing internal structures and community relationships as well as creating new ones to enhance health equity in South Carolina and better reach our vulnerable communities. This includes continuing to take actions to proactively address long-standing equity gaps and reduce disparities.
  - This new office provides training, resources, and dialogue to further empower and equip DHEC's employees to consider, practice and implement a diversity, equity and inclusion (DEI) framework to fulfill DHEC's vision and mission.
  - Created in November 2020, the office includes:
    - the Office of Primary Care Director,
    - a Multicultural Specialist, and
    - the DEI Director.

# Overview of Major Program Areas

## Public Health – 7 Bureaus, 1 State Laboratory, & 4 Regions

- **COVID-19 Coordination Office (In Development)**
  - Will continue DHEC's inter- and intra-agency coordination of COVID-19 related partnerships, activities, reports, and deliverables.
  - Will support continued community-based COVID-19 testing and vaccination across the state.
  - The office will be comprised of four divisions:
    - Financial Services
    - Operations
    - Public Services
    - Support Services



# Additional Resources

Agency	Mission	Governance	Structure	Accountability Report	Legislative Oversight Committee Study
<b>Department of Health and Environmental Control</b> <a href="https://scdhec.gov">https://scdhec.gov</a>	<i>To improve the quality of life for all South Carolinians by protecting and promoting the health of the public and the environment.</i>	<a href="https://scdhec.gov/about-dhec/sc-board-health-environmental-control">Board of Health and Environmental Control</a> <a href="https://scdhec.gov/about-dhec/sc-board-health-environmental-control">https://scdhec.gov/about-dhec/sc-board-health-environmental-control</a>	<a href="https://scdhec.gov/sites/default/files/Library/CR-010075.pdf">Organization Chart</a> <a href="https://scdhec.gov/sites/default/files/Library/CR-010075.pdf">https://scdhec.gov/sites/default/files/Library/CR-010075.pdf</a>	<a href="https://www.scstatehouse.gov/reports/aar2020/J040.pdf">Fiscal Year 2019-2020</a> <a href="https://www.scstatehouse.gov/reports/aar2020/J040.pdf">https://www.scstatehouse.gov/reports/aar2020/J040.pdf</a>	<a href="https://www.scstatehouse.gov/CommitteeInfo/HouseLegislativeOversightCommittee/AgencyWebpages/DHEC/Final%20Full%20Committee%20Study%2012_29.PDF">December 29, 2017</a> <a href="https://www.scstatehouse.gov/CommitteeInfo/HouseLegislativeOversightCommittee/AgencyWebpages/DHEC/Final%20Full%20Committee%20Study%2012_29.PDF">https://www.scstatehouse.gov/CommitteeInfo/HouseLegislativeOversightCommittee/AgencyWebpages/DHEC/Final%20Full%20Committee%20Study%2012_29.PDF</a>



## Contact Us



### Cassandra Harris

Director of Strategy and Engagement  
SC Department of Health and Environmental Control  
[harriscs@dhec.sc.gov](mailto:harriscs@dhec.sc.gov)

## Stay Connected

