

DON'T WAIT UNTIL IT'S TOO LATE.

Vaccination is the best way
to protect you, your family
and your community.



COVID-19 Vaccine Information Line
1-866-365-8110

www.scdhec.gov/vaxfacts



Dominion Wateree Draft NPDES Permit Reissuance **PUBLIC MEETING & PUBLIC HEARING**

- ✓ To avoid echoing or feedback, all lines are muted.
- ✓ At the end of the presentation, we will unmute and call upon those who would like to speak.
- ✓ This virtual meeting will be recorded and posted on our webpage.

Option to Call In

If you are experiencing audio problems, join the virtual hearing by phone:

Phone number: **1 (864) 558-7311**

Access Code: **267 519 227#**



Exits the hearing. (If you accidentally exit the hearing, you can rejoin.)

AGENDA

- Gathering Time
- Opening Remarks
- Presentation
- Public Meeting Q&A
- Convene Public Hearing
- Public Comments
- Closing Remarks
- Hearing Adjourned



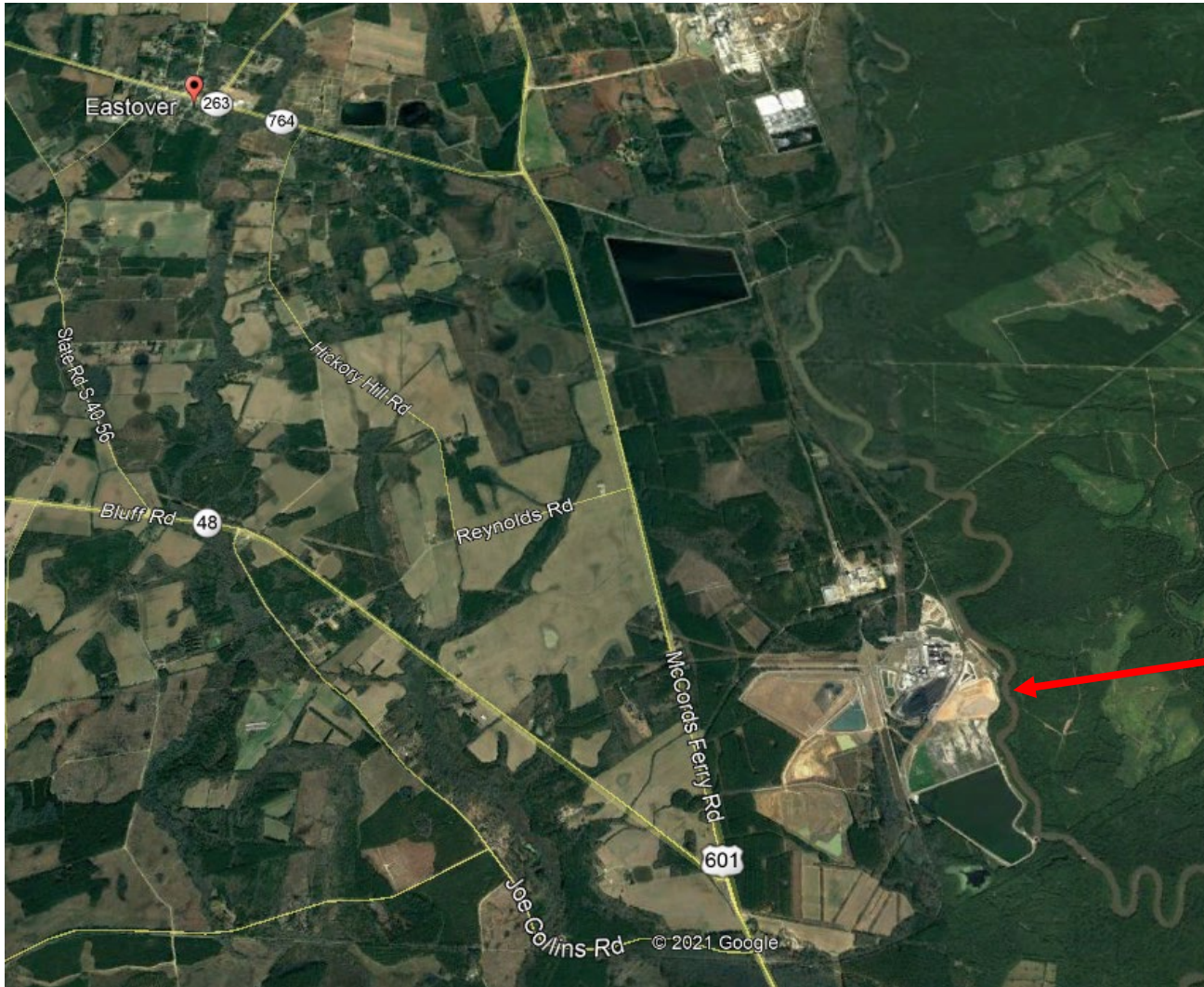
South Carolina Department of Health and Environmental Control

Dominion Energy Wateree Station

August 17, 2021

Wastewater Discharge Permit

- Known as “NPDES Permit”
- Wastewater discharges to creeks and rivers
- NPDES permits are required by law
- Protects water quality of receiving stream



Wateree
Station



Discharge
Location

Wastewater Sources

- Cooling water



Intake Canal



Cooling
Towers

Intake Canal



Cooling Towers

Intake Canal

Polishing Pond

Wastewater Sources

- Cooling water
- Coal ash handling

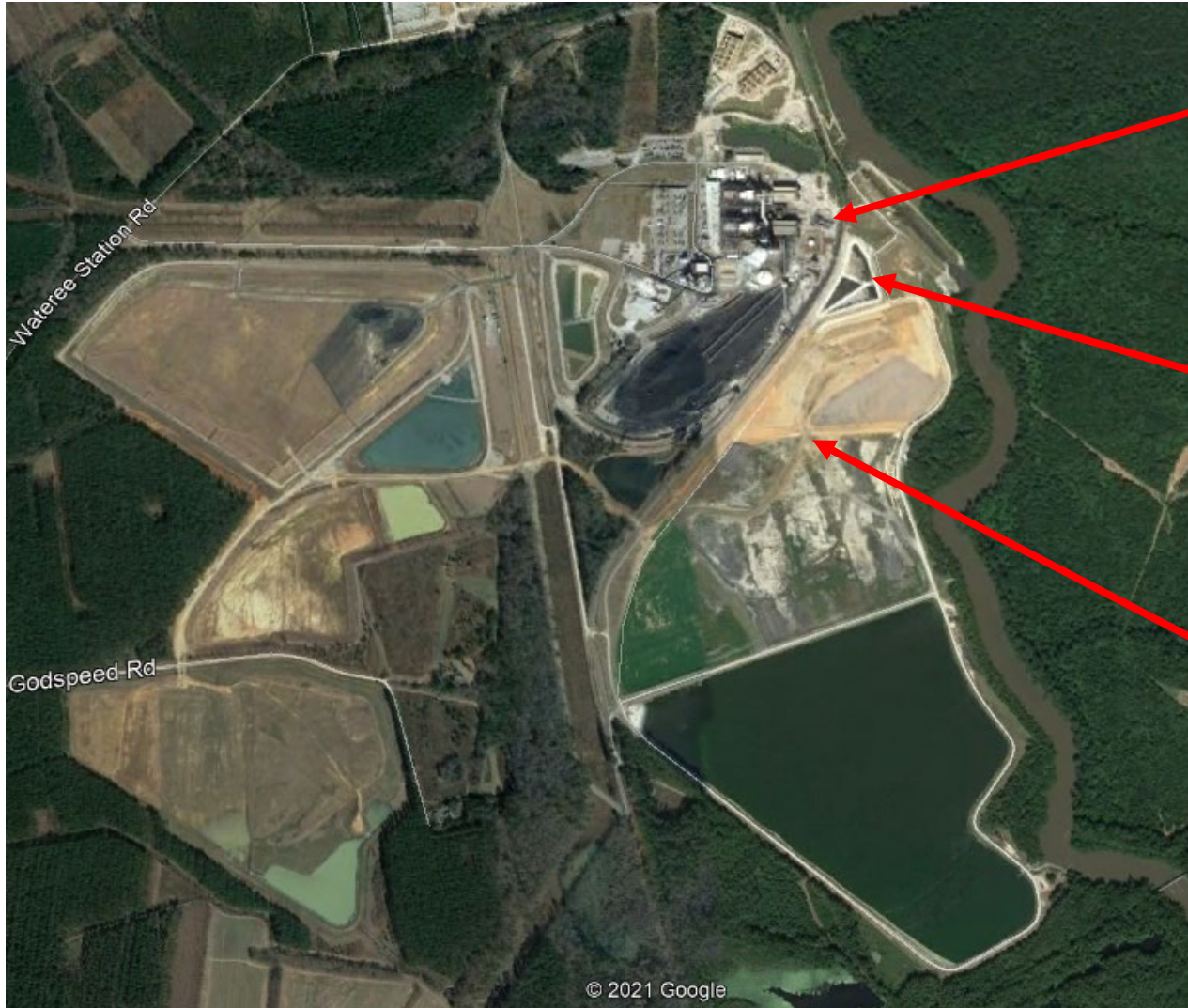


Former Ash
Pond 1



Ash Dewatering
Equipment

Former Ash
Pond 1



Ash Dewatering
Equipment

"New"
Wastewater
Pond

Former Ash
Pond 1

Wastewater Sources

- Cooling water
- Coal ash handling
- Onsite landfill

Landfill



Landfill

Landfill
Pond



Wastewater Sources

- Cooling water
- Coal ash handling
- Onsite landfill
- Flue Gas Desulfurization (FGD) device

FGD
Ponds

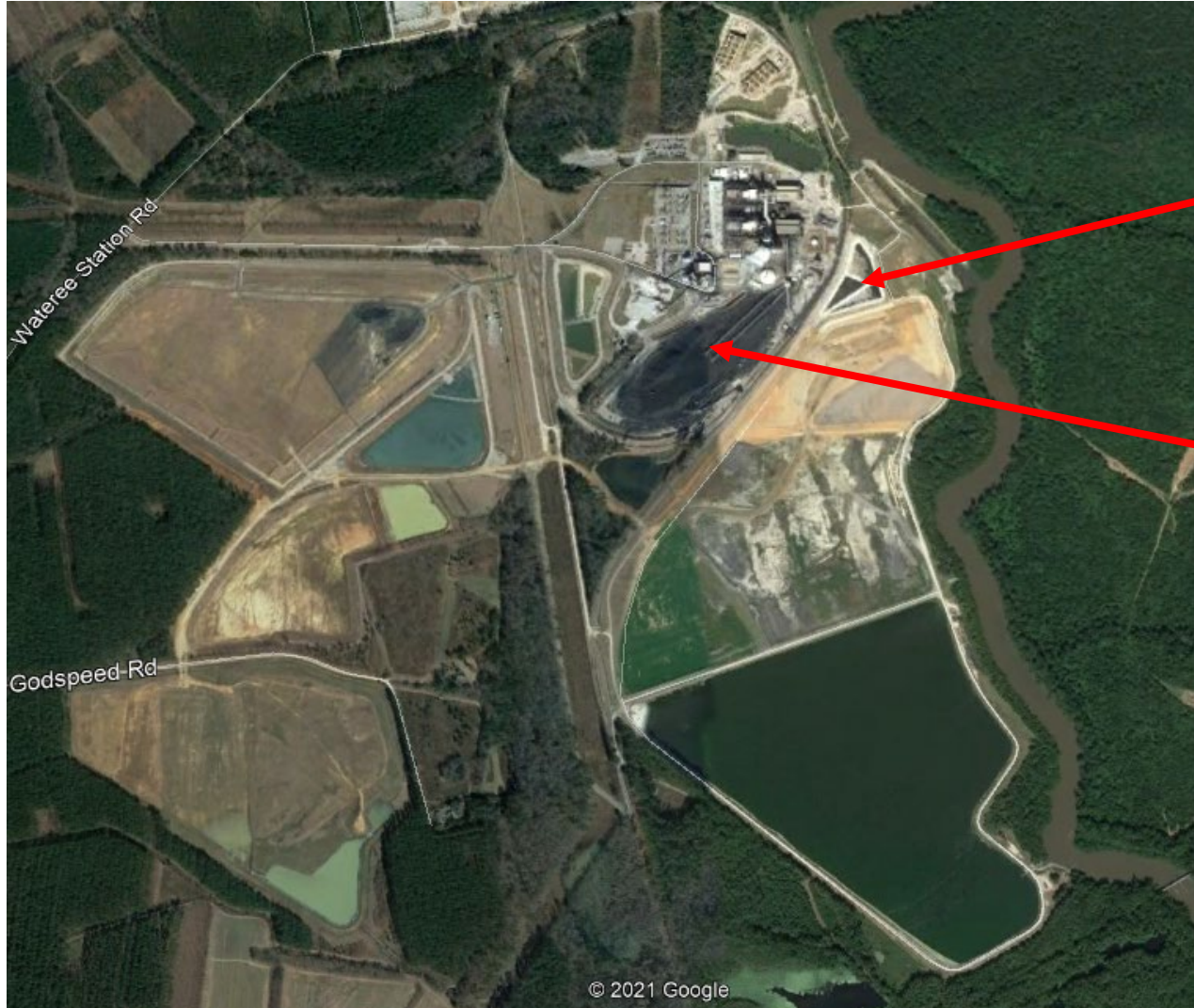


Wastewater Sources

- Cooling water
- Coal ash handling
- Onsite landfill
- Flue Gas Desulfurization (FGD) device
- Coal Pile stormwater runoff



Coal Pile



“New”
Wastewater
Pond

Coal Pile

Wastewater Sources

- Cooling water
- Coal ash handling
- Onsite landfill
- Flue Gas Desulfurization (FGD) device
- Coal Pile stormwater runoff
- Other miscellaneous wastewaters

Significant Changes

- Closure of Ash Pond 1
- Ash Wastewater Management
- Discharge Flow Volume
 - Previous Permit - 6 to 7 million gallons per day
 - This Draft Permit - 2.5 million gallons per day

Draft NPDES Permit Discharge to Wateree River

- Limits for the following:
 - Total Suspended Solids
 - Oil and Grease
 - pH (measure of acidity)
- Monitoring for the following:
 - Flow, ammonia, mercury, phosphorus, bromide, and temperature

Draft NPDES Permit Internal Monitoring

- Cooling Water
 - Monitoring for flow
 - Limits on chlorine, chromium and zinc
- Landfill Wastewater and Stormwater
 - Monitoring for flow

Draft NPDES Permit Internal Monitoring (cont.)

- FGD Wastewater
 - Monitoring for flow
 - Limits on arsenic, mercury, selenium, nitrate/nitrite, bromide, and total dissolved solids
 - Effective December 31, 2028
- Ash Wastewater
 - Limit on flow
 - Effective January 1, 2025

Draft NPDES Permit Internal Monitoring (cont.)

- Internal Boiler Tube Rinse Water
 - Monitoring for flow
 - Limits on copper and iron

Draft NPDES Permit Groundwater Monitoring

- Arsenic
- Lead
- Chromium
- Cadmium
- Sulfate
- Copper
- Iron
- Mercury
- Nickel
- Selenium
- Zinc
- Chloride
- Nitrate
- Turbidity
- pH
- Conductivity
- Depth
- Elevation

Draft NPDES Permit Other Requirements

- Cooling Water Intake requirements
- Mercury Minimization
- Semi-annual Wateree River sampling for arsenic and nickel

Next Steps

- Public comment period ends September 17, 2021.
- DHEC will review and consider all comments
- Final permit decision possible by the end of the year
- If issued, the permit would be for five years.

Additional Information

www.scdhec.gov/DominionWaterree

CONTACT US

Randy Thompson
Industrial Wastewater Permitting
(803) 898-4314
thompsgr@dhec.sc.gov

Stay Connected

How to Comment

To indicate you would like to comment:

- Unmute your line
- Click the 'Hand Raise' icon



Hand Raise
(click this icon to
indicate you would like
to speak)



Muted
(no one in the meeting
can hear you)



Unmuted
(everyone in the
meeting can hear you)



If you have called into
the meeting, press *6
to unmute