

# Air Monitoring Summary Tables

This table summarizes monitoring data collected using DHEC monitors and EPA's Viper wireless remote monitoring system.

**Project Name:** H<sub>2</sub>S in South Carolina



**From:** 7/2/21  
12:02 AM

**To:** 7/2/21  
11:59 PM

Tom Stevens Rd							
Instrument	Analyte	ATSDR MRL Exceedance?	Number of Readings	Number of Detections	Concentration Range	Period Average	ATSDR MRL
SPM Flex 1	H2S	No	27378	1062	0 - 4 ppb	0.09 ppb	70 ppb

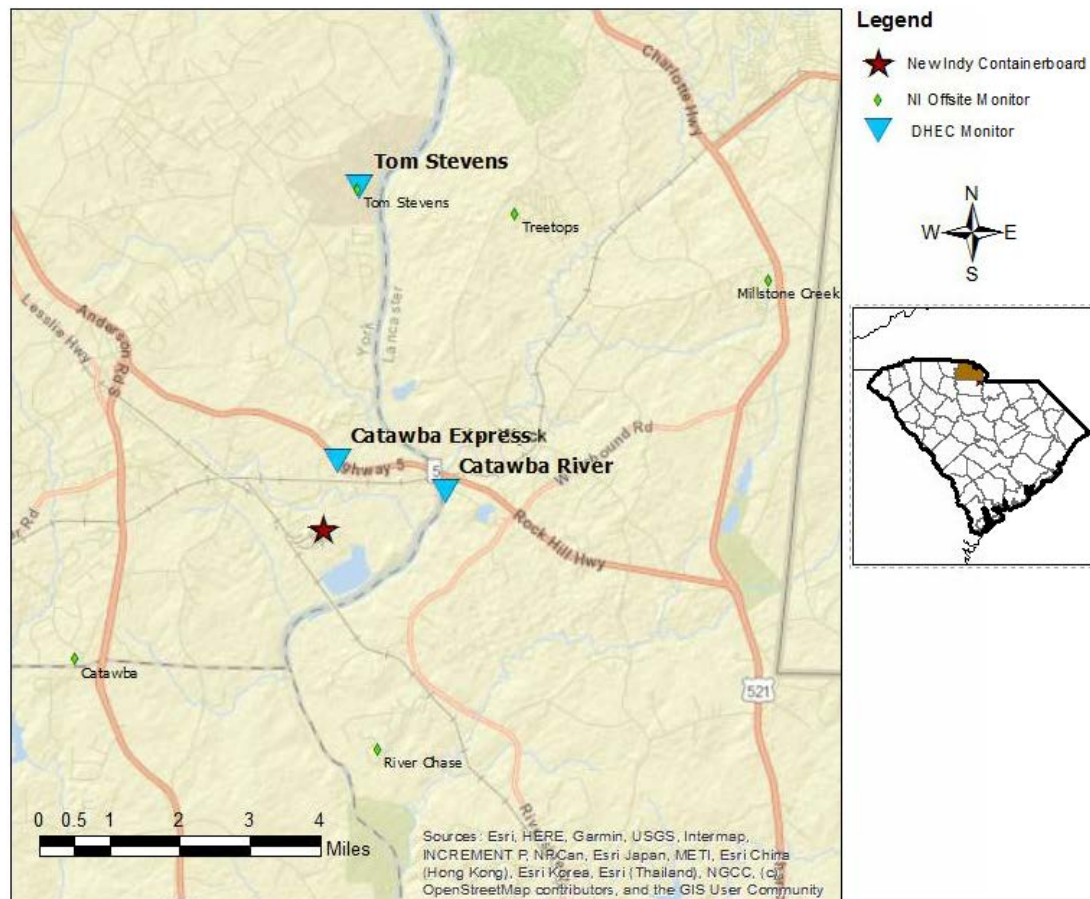
Catawba River							
Instrument	Analyte	ATSDR MRL Exceedance?	Number of Readings	Number of Detections	Concentration Range	Period Average	ATSDR MRL
SPM Flex 2	H2S	No	26569	4010	0 - 4 ppb	0.32 ppb	70 ppb

Catawba Express							
Instrument	Analyte	ATSDR MRL Exceedance?	Number of Readings	Number of Detections	Concentration Range	Period Average	ATSDR MRL
SPM Flex 3	H2S	No	13665	897	0 - 3 ppb	0.12 ppb	70 ppb

**Notes:**

Hydrogen sulfide concentrations presented in this data summary table are converted from parts per million, the instrument readout units, to parts per billion.

- ATSDR MRL Agency for Toxic Substances and Disease Registry Minimal Risk Level - Acute Exposure (<14 days)
- H<sub>2</sub>S Hydrogen Sulfide
- hr Hour
- ppb Parts per billion
- MRL Exceedance Defines if the 24-hr TWA exceeded the MRL at any time during the period of this report
- SPM Single Point Monitor
- TWA Time Weighted Average



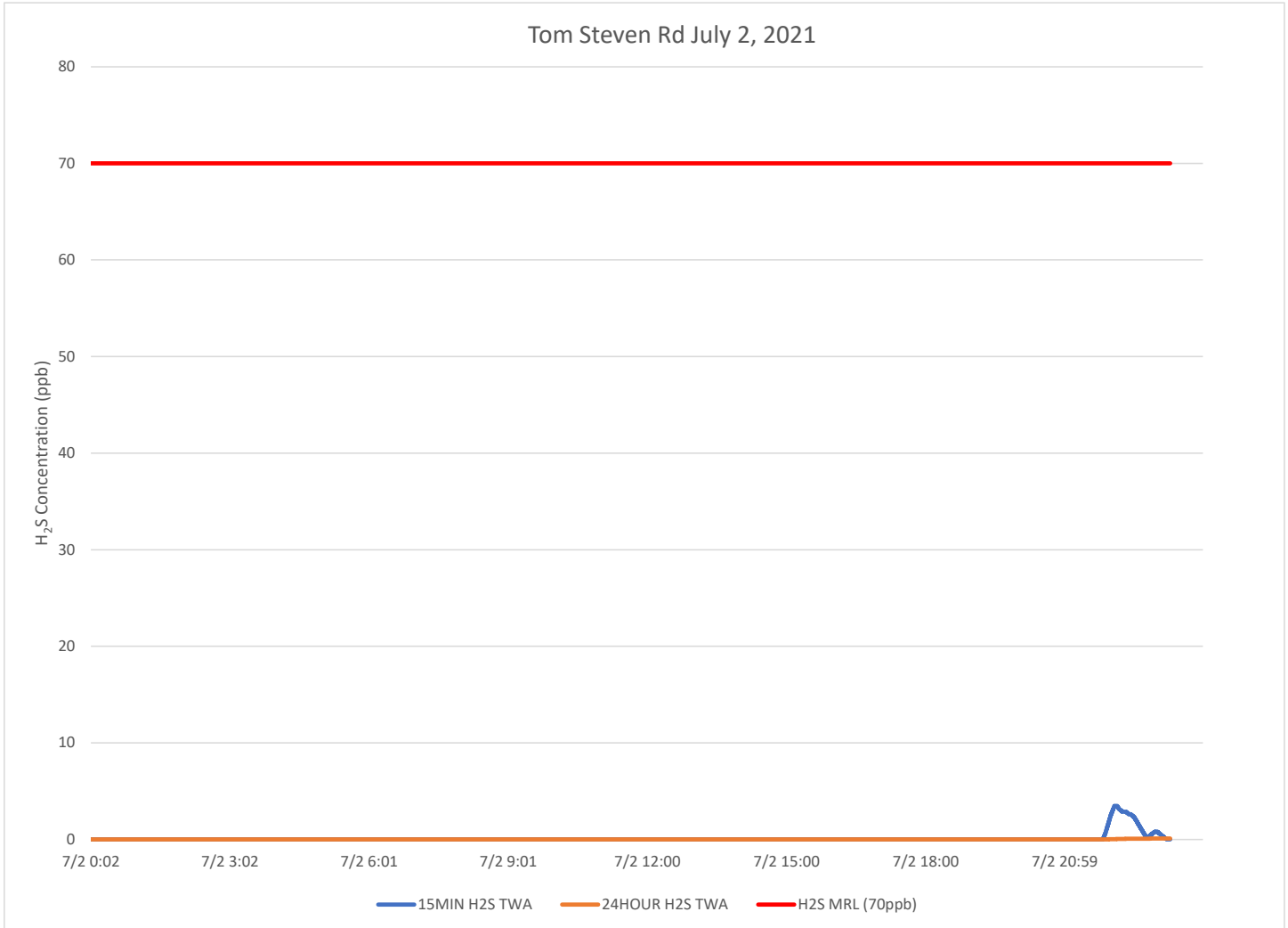
# H<sub>2</sub>S in South Carolina

## Hydrogen Sulfide 15-min and 24-hr Time Weighted Graphs

Only locations where hydrogen sulfide was detected during the current reporting period are graphed below.

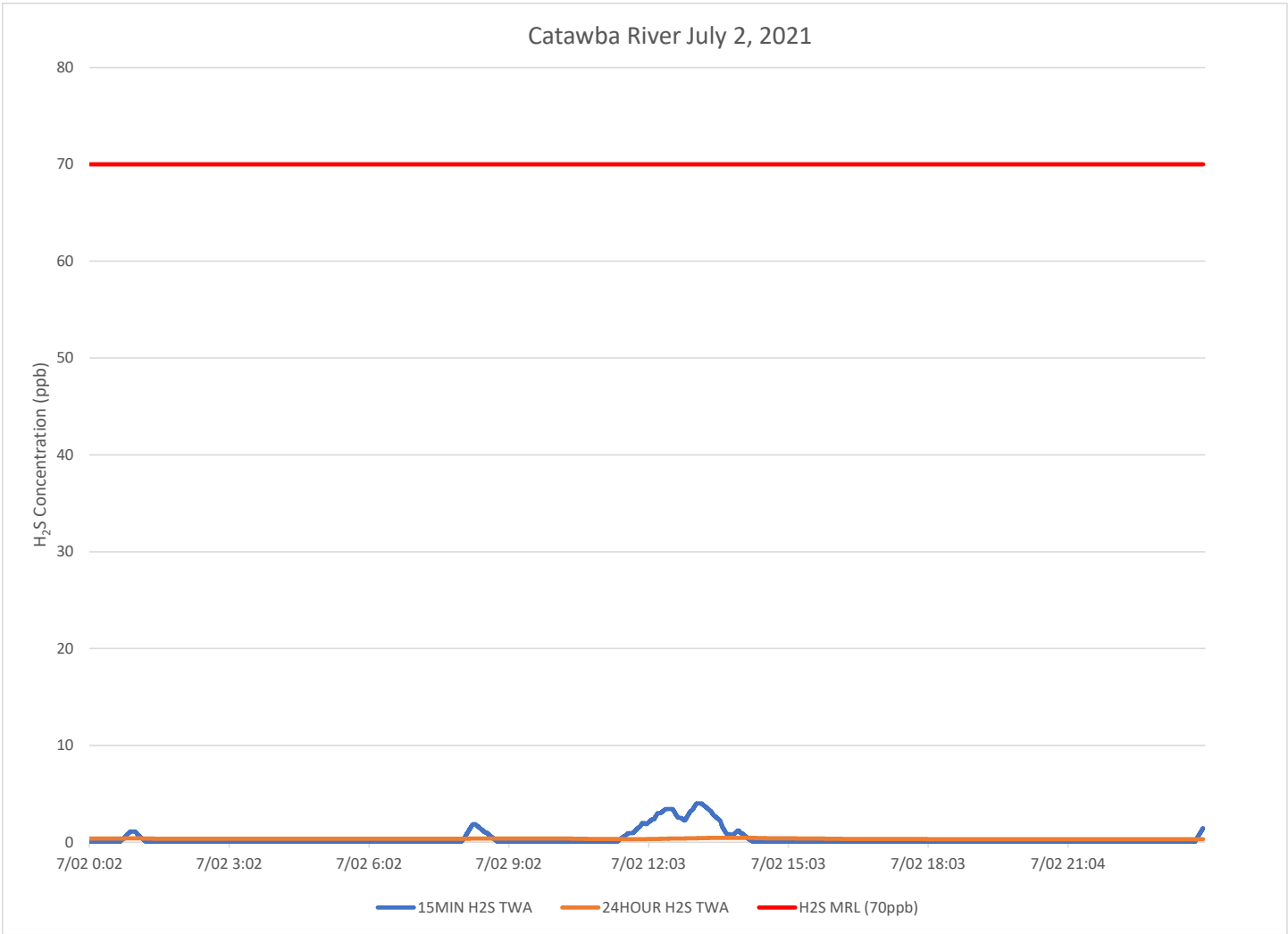
The prevailing wind for this reporting period was out of the southwest.

The Catawba Express monitor experienced a disruption in communications approximately noon 7/2/21. If data collection continued during the disruption and can be recovered, complete data collected at that site will be reposted.



### Notes:

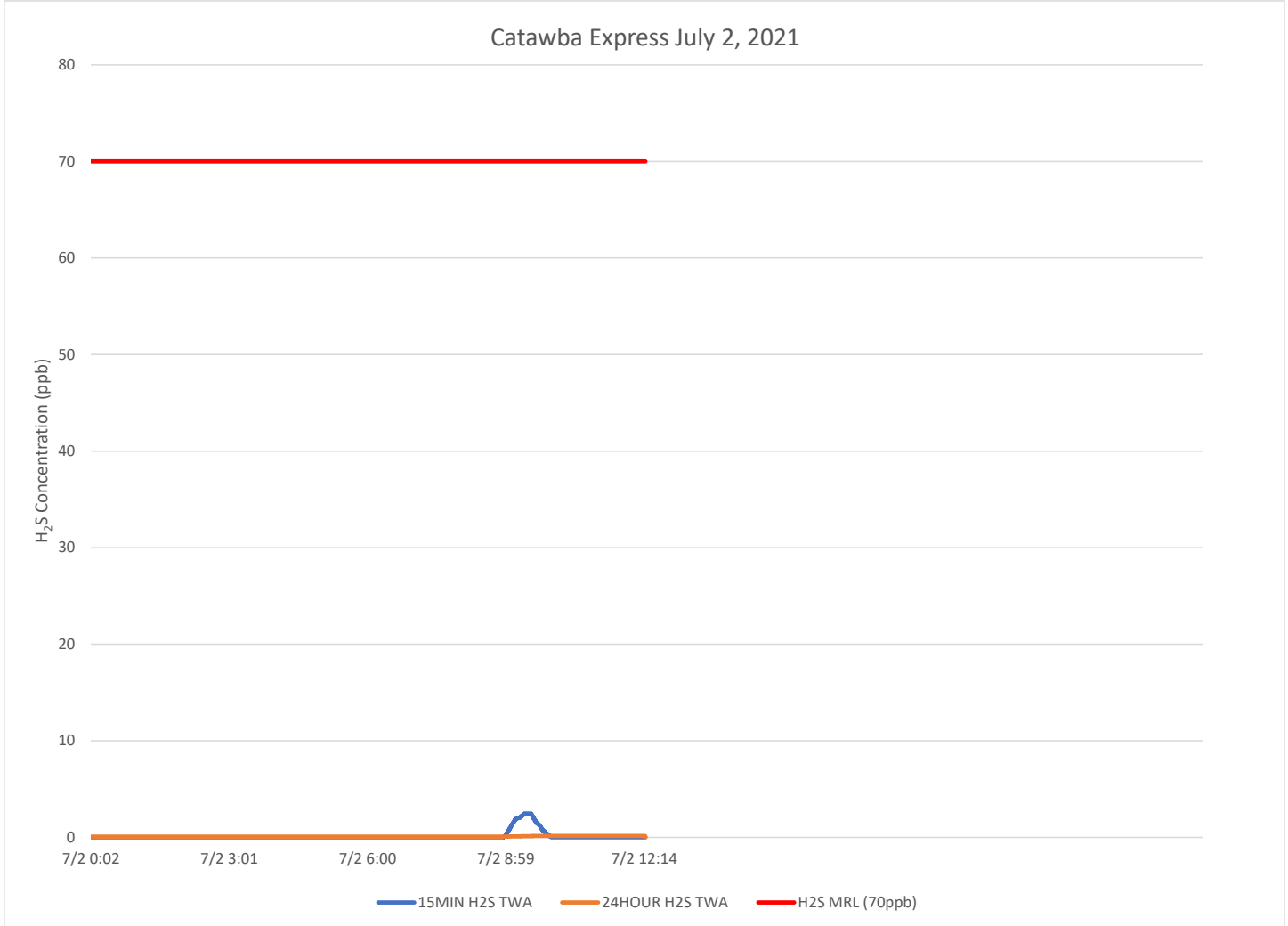
H<sub>2</sub>S – Hydrogen Sulfide  
MIN – Minute  
MRL – Minimal Risk Level  
ppb – Parts per billion



**Notes:**

- H<sub>2</sub>S – Hydrogen Sulfide
- MIN – Minute
- MRL – Minimal Risk Level
- ppb – Parts per billion

Communication with The Catawba express monitor was interrupted approximately noon on 7/2/21. Data in the summary table and chart will be reposted when any missing data is recovered and verified.



**Notes:**

H<sub>2</sub>S – Hydrogen Sulfide  
MIN – Minute  
MRL – Minimal Risk Level  
ppb – Parts per billion