

Air Monitoring Summary Tables

This table summarizes monitoring data collected using DHEC monitors and EPA's Viper wireless remote monitoring system.



Project Name: H₂S in South Carolina

From: 7/3/21
12:00 AM

To: 7/3/21
11:59 PM

Tom Stevens Rd							
Instrument	Analyte	ATSDR MRL Exceedance?	Number of Readings	Number of Detections	Concentration Range	Period Average	ATSDR MRL
SPM Flex 1	H2S	No	27407	0	0 - 0 ppb	0 ppb	70 ppb

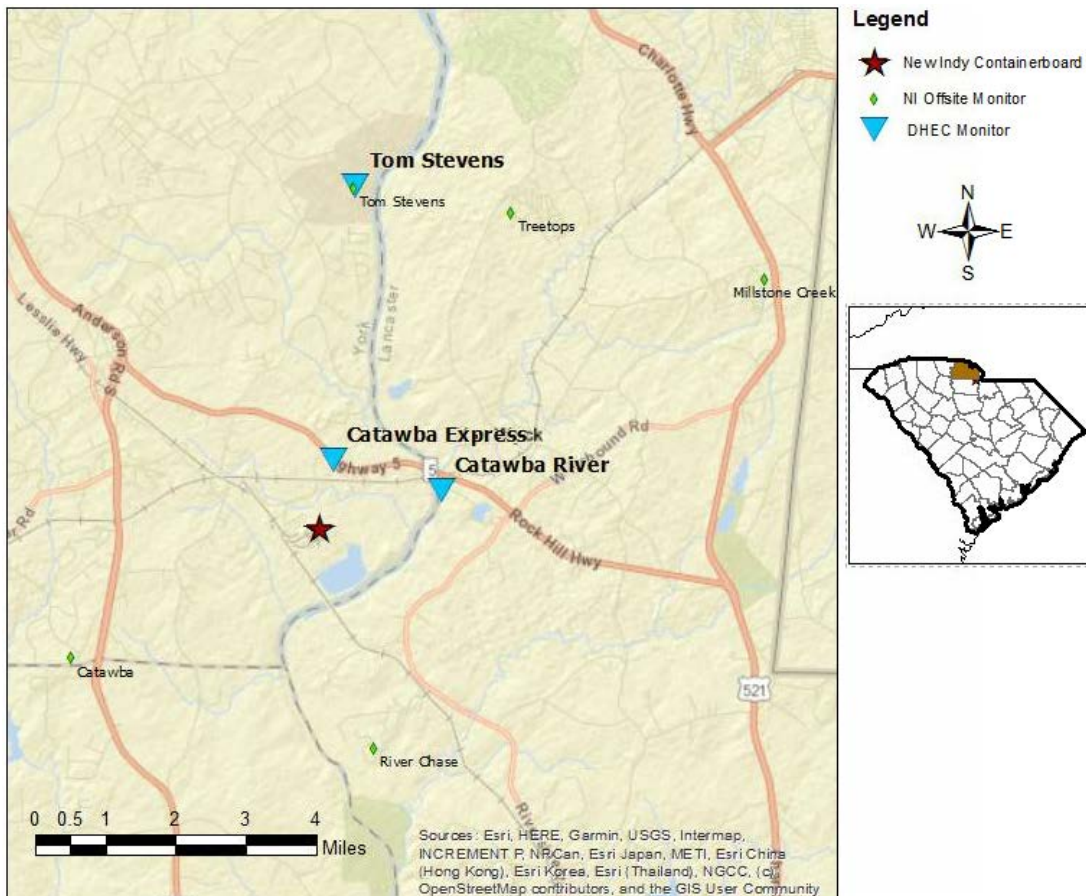
Catawba River							
Instrument	Analyte	ATSDR MRL Exceedance?	Number of Readings	Number of Detections	Concentration Range	Period Average	ATSDR MRL
SPM Flex 2	H2S	No	26591	4509	0 - 4 ppb	0.34 ppb	70 ppb

Catawba Express							
Instrument	Analyte	ATSDR MRL Exceedance?	Number of Readings	Number of Detections	Concentration Range	Period Average	ATSDR MRL
SPM Flex 3	H2S	No	1067	0	0 - 0 ppb	0 ppb	70 ppb

Notes:

Hydrogen sulfide concentrations presented in this data summary table are converted from parts per million, the instrument readout units, to parts per billion.

- ATSDR MRL Agency for Toxic Substances and Disease Registry Minimal Risk Level - Acute Exposure (<14 days)
- H₂S Hydrogen Sulfide
- hr Hour
- ppb Parts per billion
- MRL Exceedance Defines if the 24-hr TWA exceeded the MRL at any time during the period of this report
- SPM Single Point Monitor
- TWA Time Weighted Average



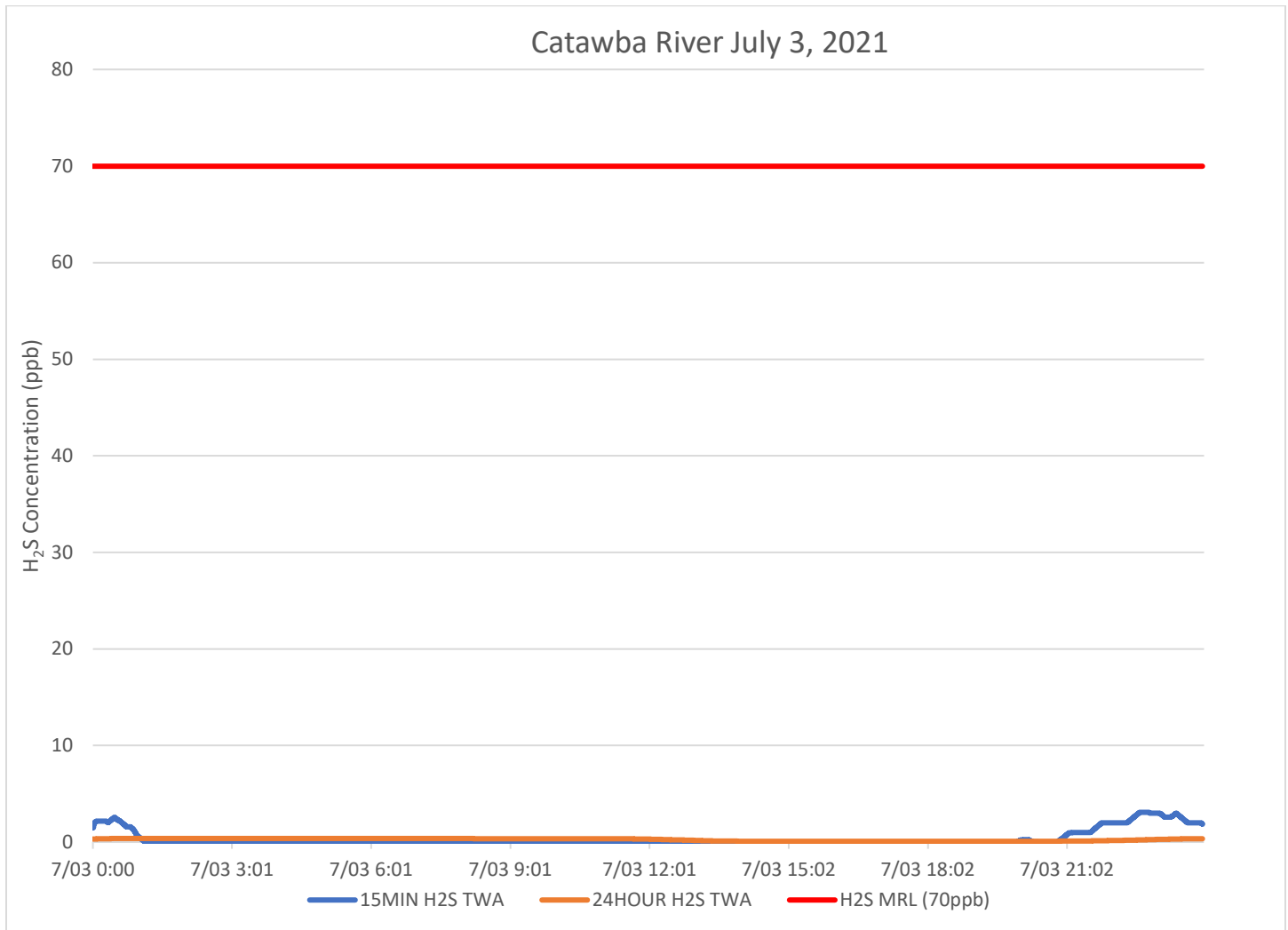
H₂S in South Carolina

Hydrogen Sulfide 15-min and 24-hr Time Weighted Graphs

The prevailing wind for this reporting period was out of the North to North northeast.

The Tom Stevens Road monitor did not detect hydrogen sulfide above 1 part per billion (ppb) during this reporting period

The Catawba Express monitor experienced a disruption in communications approximately noon 7/2/21. Approximately one hour- from 8:30 to 9:30PM - was recovered as repair was attempted Saturday night and is summarized in the table. If data collection has continued during the disruptions and can be recovered, complete data collected at the Catawba Express site will be reposted.



Notes:

H₂S – Hydrogen Sulfide
MIN – Minute
MRL – Minimal Risk Level
ppb – Parts per billion

Communication with The Catawba express monitor was interrupted approximately noon on 7/2/21. Data in the summary tables and charts will be reposted when any missing data is recovered and verified.