

# Air Monitoring Summary Tables

This table summarizes monitoring data collected using DHEC monitors and EPA's Viper wireless remote monitoring system.

**Project Name:** H<sub>2</sub>S in South Carolina



**From:** 7/4/21  
12:00 AM

**To:** 7/4/21  
11:59 PM

Tom Stevens Rd							
Instrument	Analyte	ATSDR MRL Exceedance?	Number of Readings	Number of Detections	Concentration Range	Period Average	ATSDR MRL
SPM Flex 1	H2S	No	27425	0	0 - 0 ppb	0 ppb	70 ppb

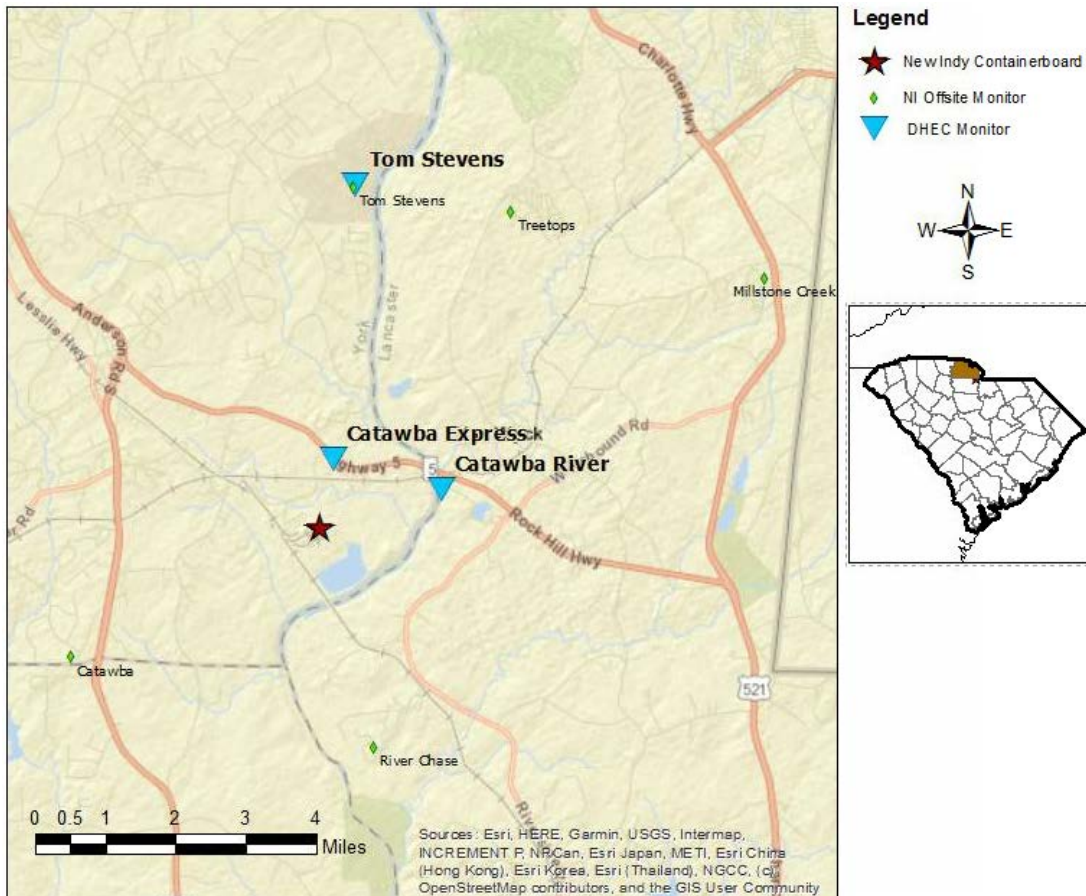
Catawba River							
Instrument	Analyte	ATSDR MRL Exceedance?	Number of Readings	Number of Detections	Concentration Range	Period Average	ATSDR MRL
SPM Flex 2	H2S	No	26586	5462	0 - 19 ppb	0.87 ppb	70 ppb

Catawba Express							
Instrument	Analyte	ATSDR MRL Exceedance?	Number of Readings	Number of Detections	Concentration Range	Period Average	ATSDR MRL
SPM Flex 3	H2S	No	0	0	0 - 0 ppb	ppb	70 ppb

**Notes:**

Hydrogen sulfide concentrations presented in this data summary table are converted from parts per million, the instrument readout units, to parts per billion.

- ATSDR MRL Agency for Toxic Substances and Disease Registry Minimal Risk Level - Acute Exposure (<14 days)
- H<sub>2</sub>S Hydrogen Sulfide
- hr Hour
- ppb Parts per billion
- MRL Exceedance Defines if the 24-hr TWA exceeded the MRL at any time during the period of this report
- SPM Single Point Monitor
- TWA Time Weighted Average



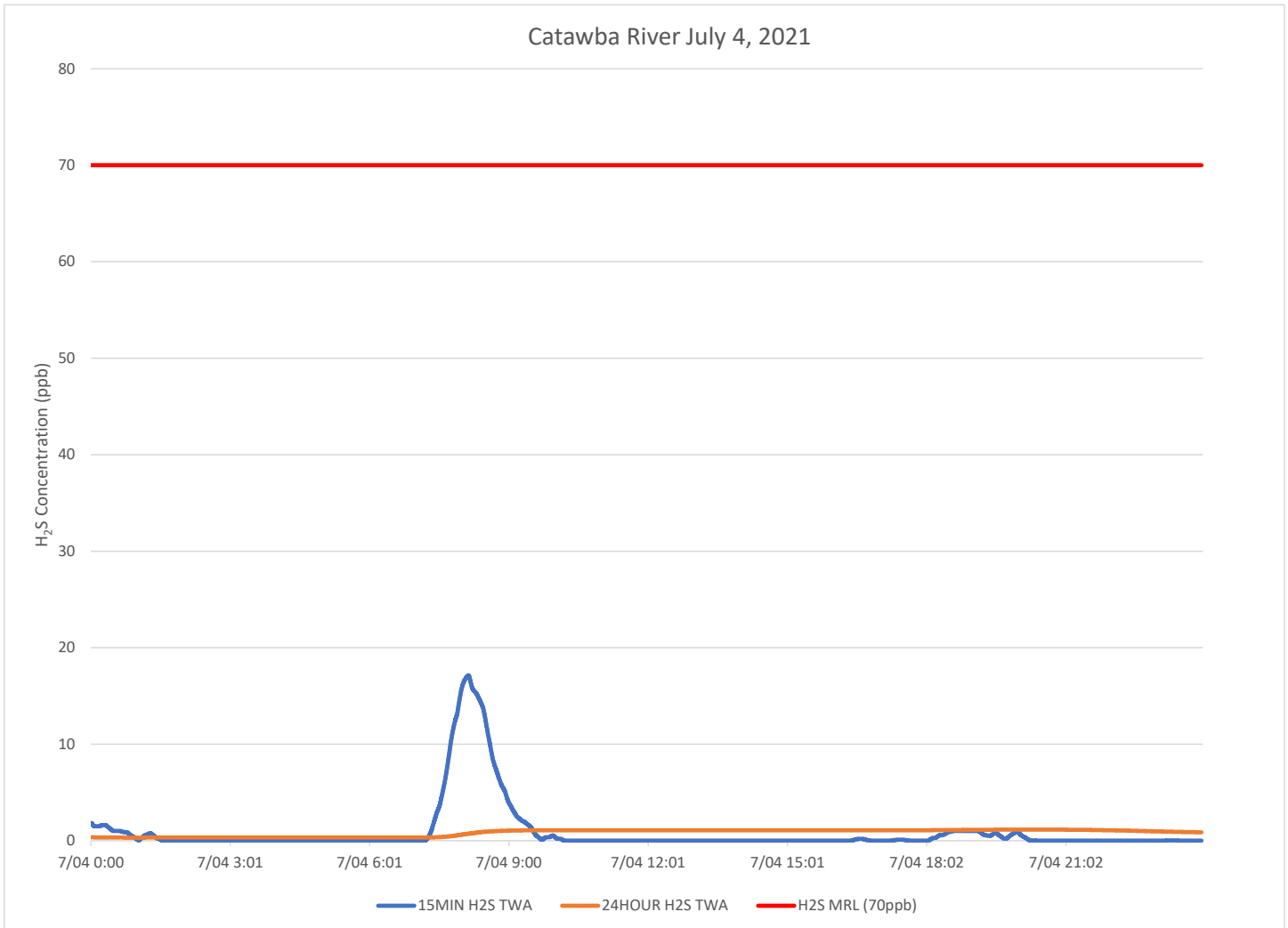
# H<sub>2</sub>S in South Carolina

## Hydrogen Sulfide 15-min and 24-hr Time Weighted Graphs

The prevailing wind for this reporting period was out of the south southwest.

The Tom Stevens Road monitor did not detect hydrogen sulfide above 1 part per billion (ppb) during this reporting period

The Catawba Express monitor experienced a disruption in communications approximately noon 7/2/21. Communication was restored approximately 8:30 AM, 7/5/21. If data collection continued during the disruptions and can be recovered, complete data collected at the Catawba Express site will be reposted.



### Notes:

H<sub>2</sub>S – Hydrogen Sulfide  
MIN – Minute  
MRL – Minimal Risk Level  
ppb – Parts per billion

Communication with The Catawba express monitor was interrupted approximately noon on 7/2/21. Data in the summary tables and charts will be reposted when any missing data is recovered and verified.