

Air Monitoring Summary Tables

This table summarizes monitoring data collected using DHEC monitors and EPA's Viper wireless remote monitoring system.

Project Name: H₂S in South Carolina



From: 7/8/21
12:00 AM

To: 7/8/21
11:59 PM

Tom Stevens Rd							
Instrument	Analyte	ATSDR MRL Exceedance?	Number of Readings	Number of Detections	Concentration Range	Period Average	ATSDR MRL
SPM Flex 1	H2S	No	26803	2277	0 - 30 ppb	1.04 ppb	70 ppb

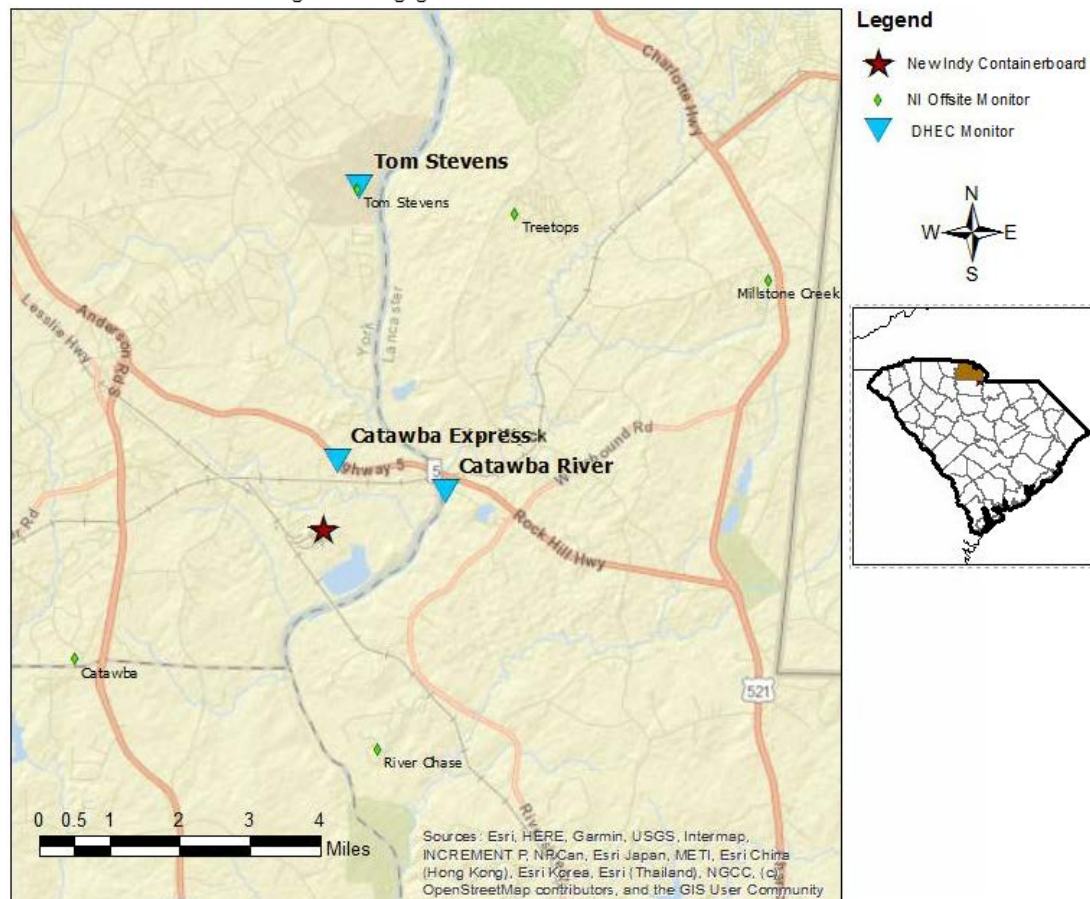
Catawba River							
Instrument	Analyte	ATSDR MRL Exceedance?	Number of Readings	Number of Detections	Concentration Range	Period Average	ATSDR MRL
SPM Flex 2	H2S	No	26166	3612	0 - 11 ppb	0.44 ppb	70 ppb

Catawba Express							
Instrument	Analyte	ATSDR MRL Exceedance?	Number of Readings	Number of Detections	Concentration Range	Period Average	ATSDR MRL
SPM Flex 3	H2S	No	21581	238	0 - 4 ppb	0.02 ppb	70 ppb

Notes:

Hydrogen sulfide concentrations presented in this data summary table are converted from parts per million, the instrument readout units, to parts per billion.

- ATSDR MRL Agency for Toxic Substances and Disease Registry Minimal Risk Level - Acute Exposure (<14 days)
- H₂S Hydrogen Sulfide
- hr Hour
- ppb Parts per billion
- MRL Exceedance Defines if the 24-hr TWA exceeded the MRL at any time during the period of this report
- SPM Single Point Monitor
- TWA Time Weighted Average

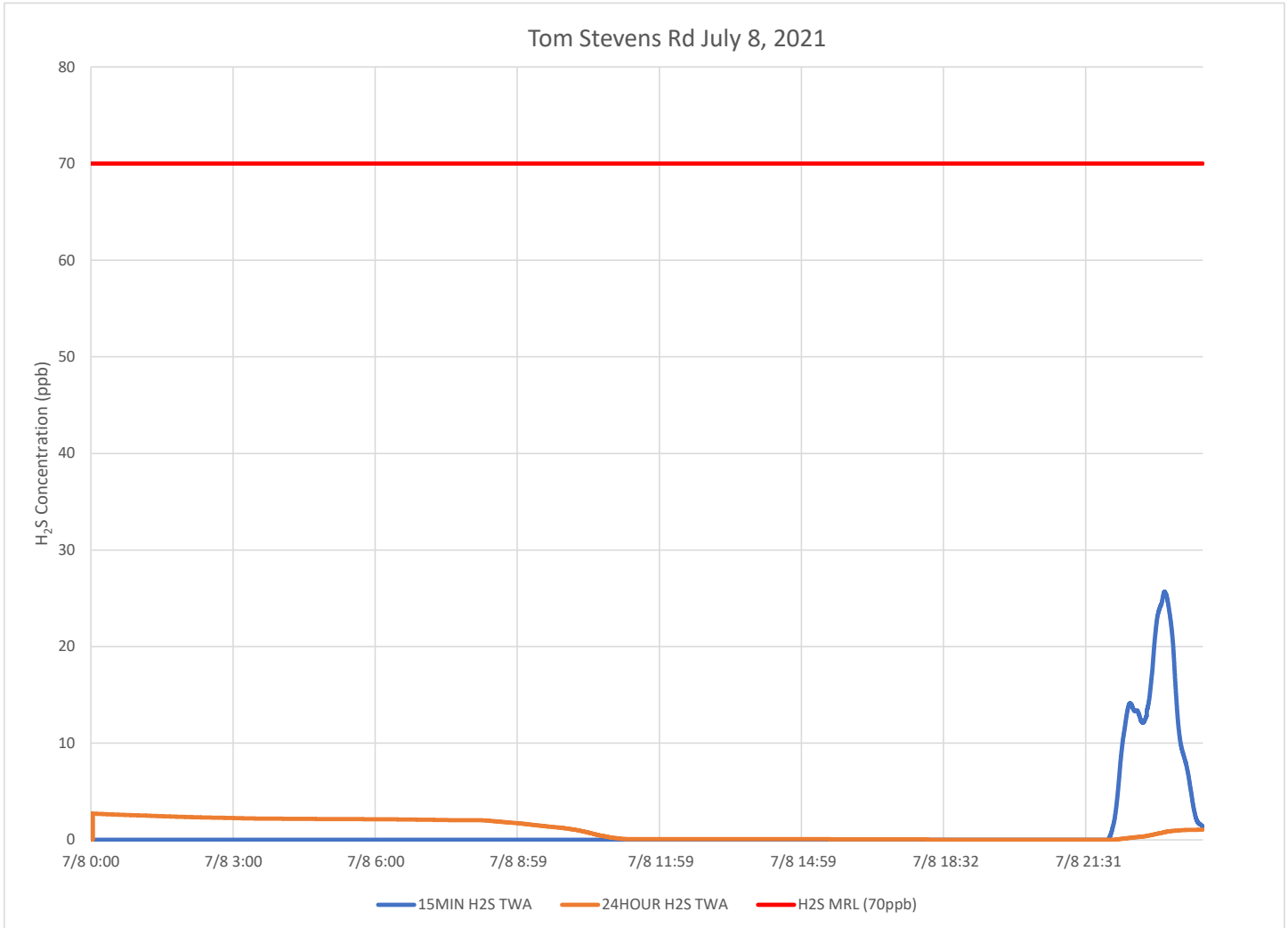


H₂S in South Carolina

Hydrogen Sulfide 15-min and 24-hr Time Weighted Graphs

There was a significant wind shift this period during the passage of ELSA with higher winds in the morning from the north northwest to north northeast in the morning shifting to lighter south southwest winds in the latter parts of the day.

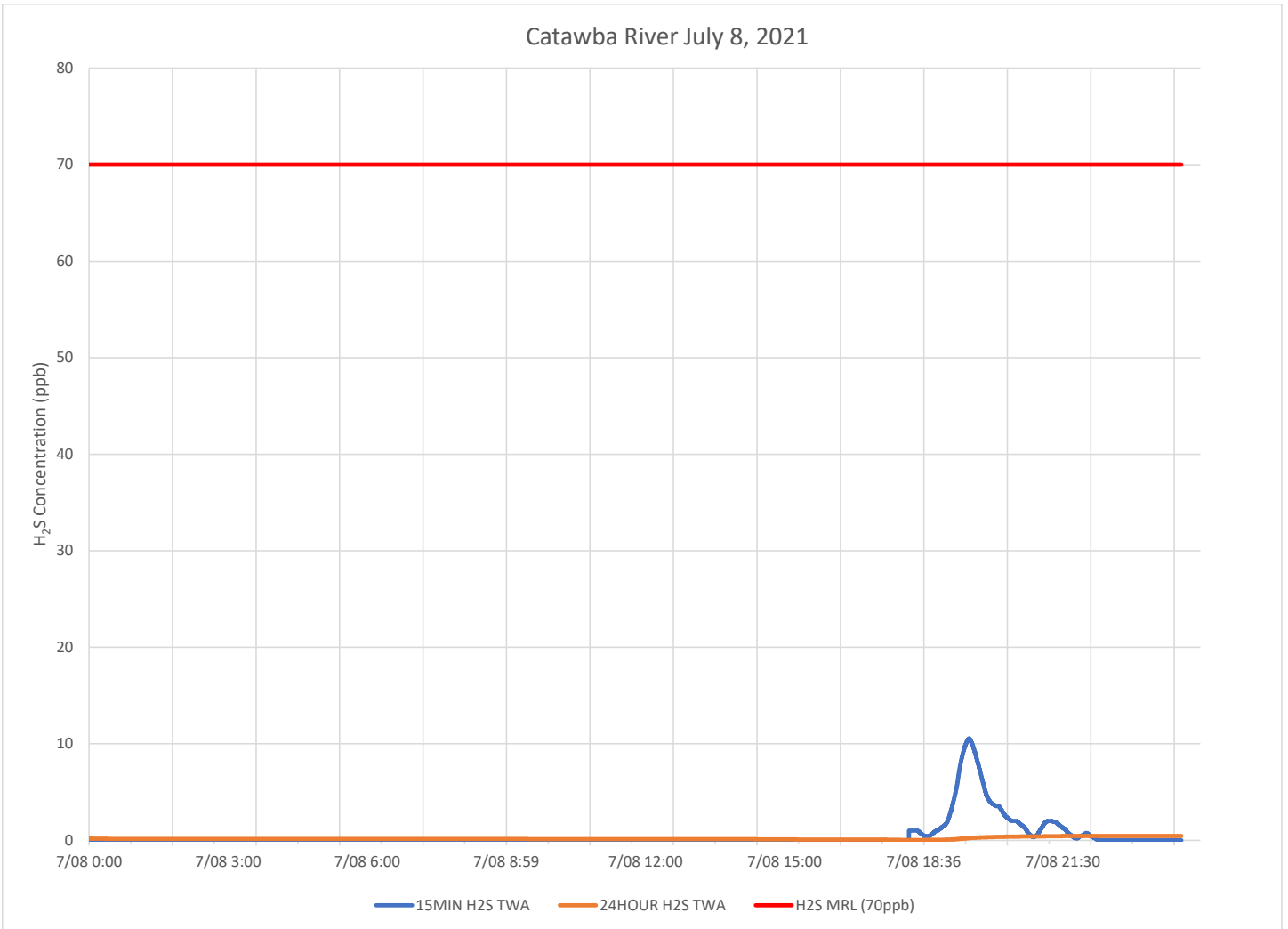
The Catawba express Gateway that sends data to the EPA database did not forward approximately 4 hours of data Thursday night. If the missing data can be recovered the chart and summary will be reposted.



Notes:

H₂S – Hydrogen Sulfide
MIN – Minute
MRL – Minimal Risk Level
ppb – Parts per billion

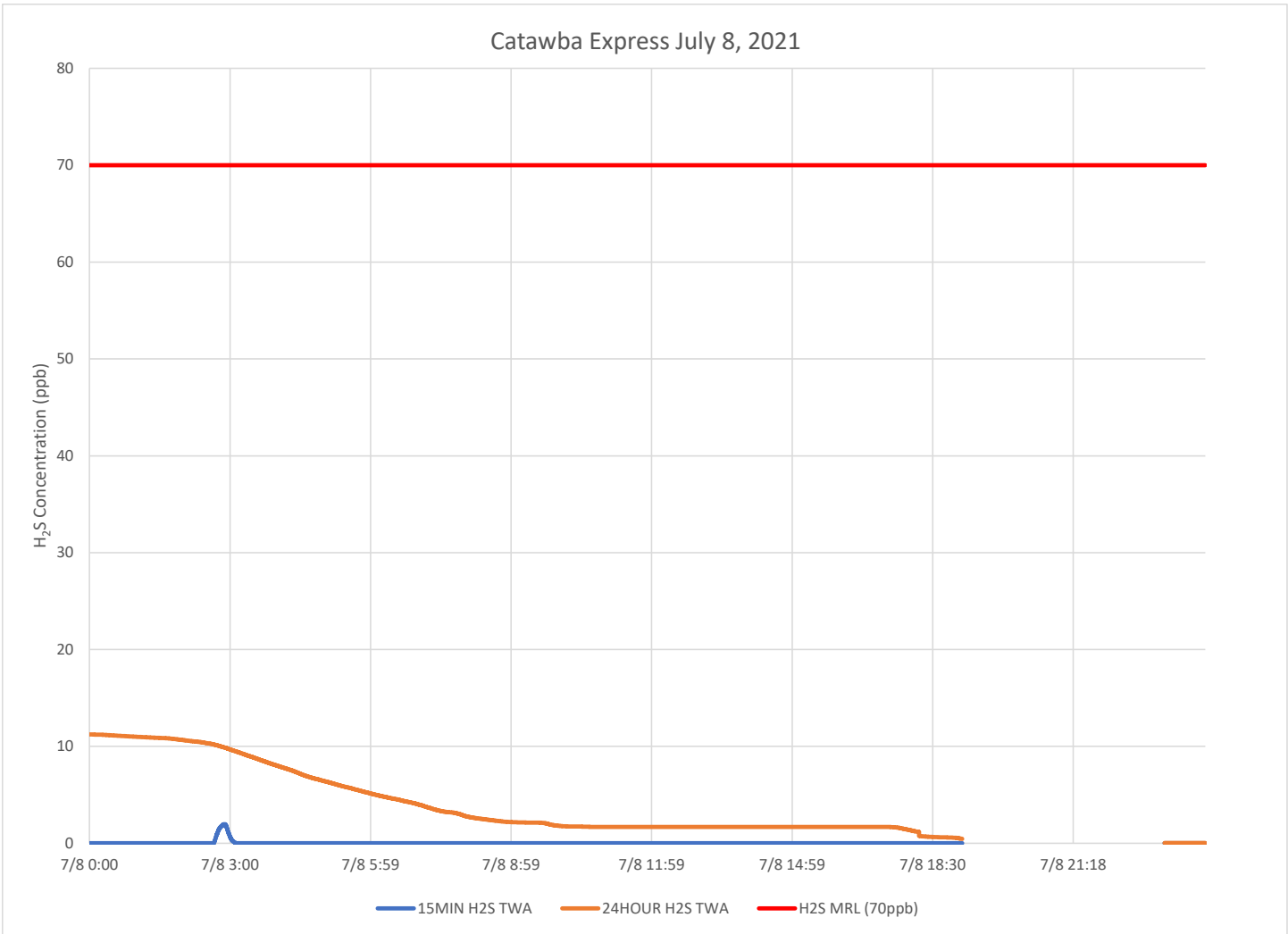
Catawba River July 8, 2021



Notes:

H₂S – Hydrogen Sulfide
MIN – Minute
MRL – Minimal Risk Level
ppb – Parts per billion

Catawba Express July 8, 2021



Notes:

H₂S – Hydrogen Sulfide
MIN – Minute
MRL – Minimal Risk Level
ppb – Parts per billion