

Air Monitoring Summary Tables

This table summarizes monitoring data collected using DHEC monitors and EPA's Viper wireless remote monitoring system.

Project Name: H₂S in South Carolina



From: 7/10/21
12:00 AM

To: 7/11/21
12:00 AM

Tom Stevens Rd							
Instrument	Analyte	ATSDR MRL Exceedance?	Number of Readings	Number of Detections	Concentration Range	Period Average	ATSDR MRL
SPM Flex 1	H2S	No	26951	2034	0 - 12 ppb	0.3 ppb	70 ppb

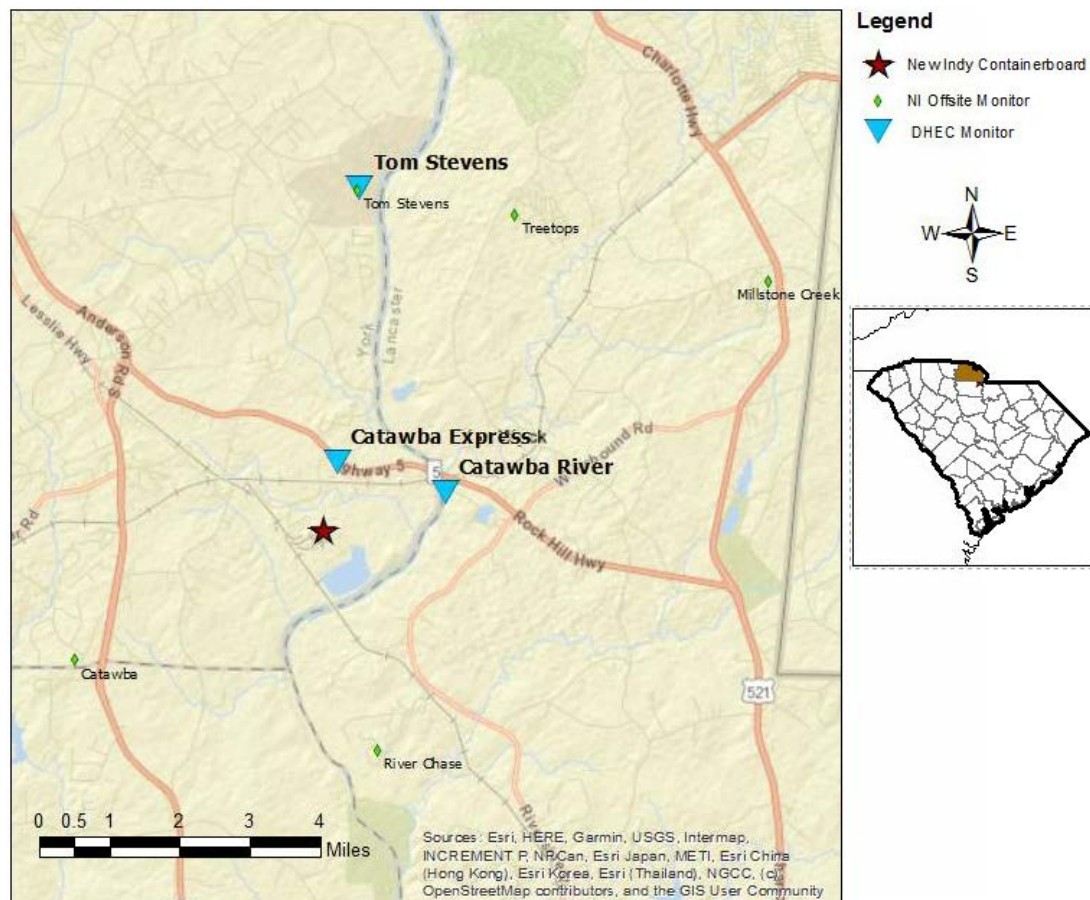
Catawba River							
Instrument	Analyte	ATSDR MRL Exceedance?	Number of Readings	Number of Detections	Concentration Range	Period Average	ATSDR MRL
SPM Flex 2	H2S	No	27542	17844	0 - 41 ppb	5.51 ppb	70 ppb

Catawba Express							
Instrument	Analyte	ATSDR MRL Exceedance?	Number of Readings	Number of Detections	Concentration Range	Period Average	ATSDR MRL
SPM Flex 3	H2S	No	26330	9114	0 - 153 ppb	7.17 ppb	70 ppb

Notes:

Hydrogen sulfide concentrations presented in this data summary table are converted from parts per million, the instrument readout units, to parts per billion.

- ATSDR MRL Agency for Toxic Substances and Disease Registry Minimal Risk Level - Acute Exposure (<14 days)
- H₂S Hydrogen Sulfide
- hr Hour
- ppb Parts per billion
- MRL Exceedance Defines if the 24-hr TWA exceeded the MRL at any time during the period of this report
- SPM Single Point Monitor
- TWA Time Weighted Average

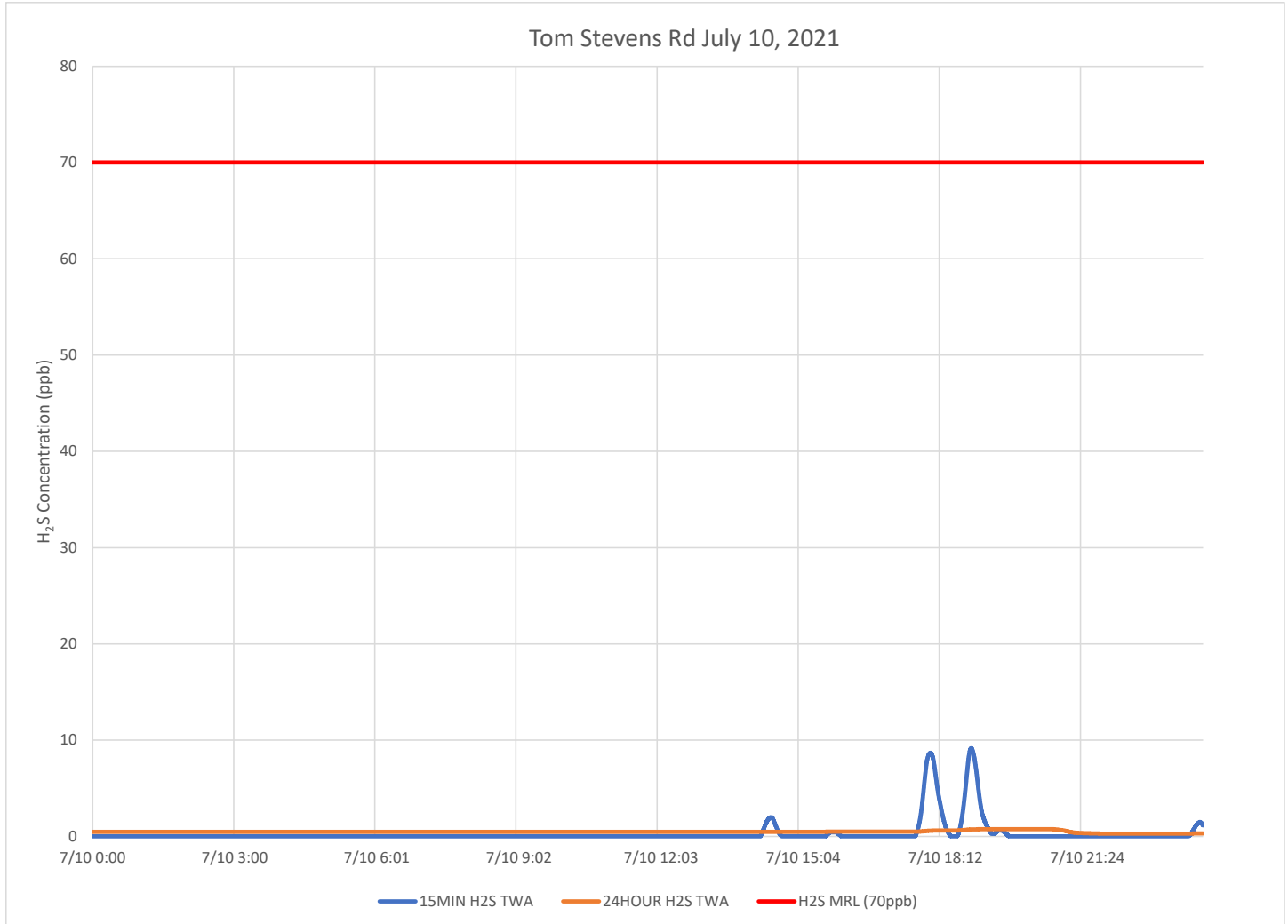


H₂S in South Carolina

Hydrogen Sulfide 15-min and 24-hr Time Weighted Graphs

Predominant winds for this period were from the southwest.

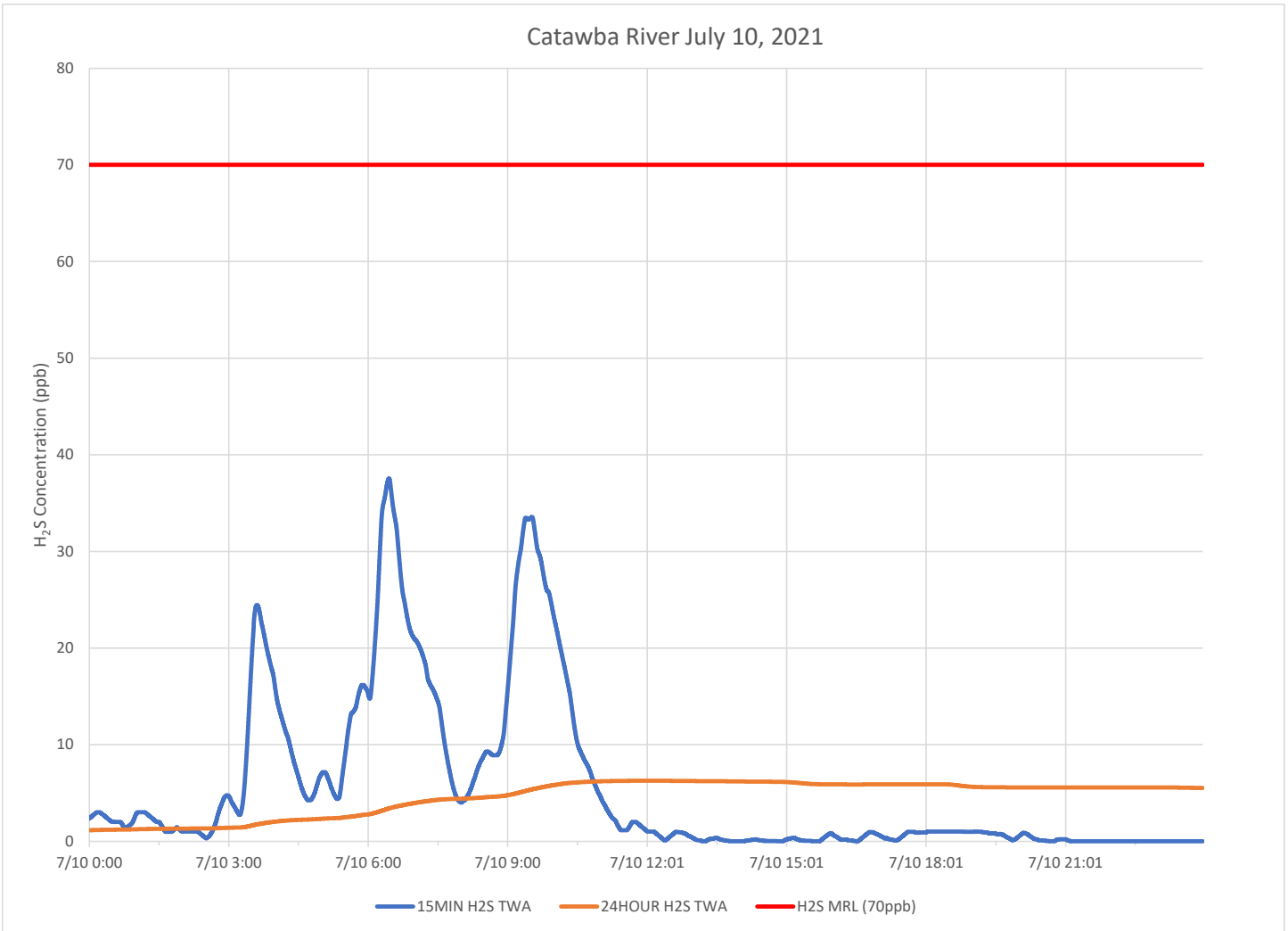
The elevated concentrations of H₂S detected at the Catawba Express monitoring site late Saturday (7/10/21) were detected through the early morning hours but returned to less than 1ppb by 4AM on Sunday. The 24 Hour MRL was not exceeded.



Notes:

H₂S – Hydrogen Sulfide
MIN – Minute
MRL – Minimal Risk Level
ppb – Parts per billion

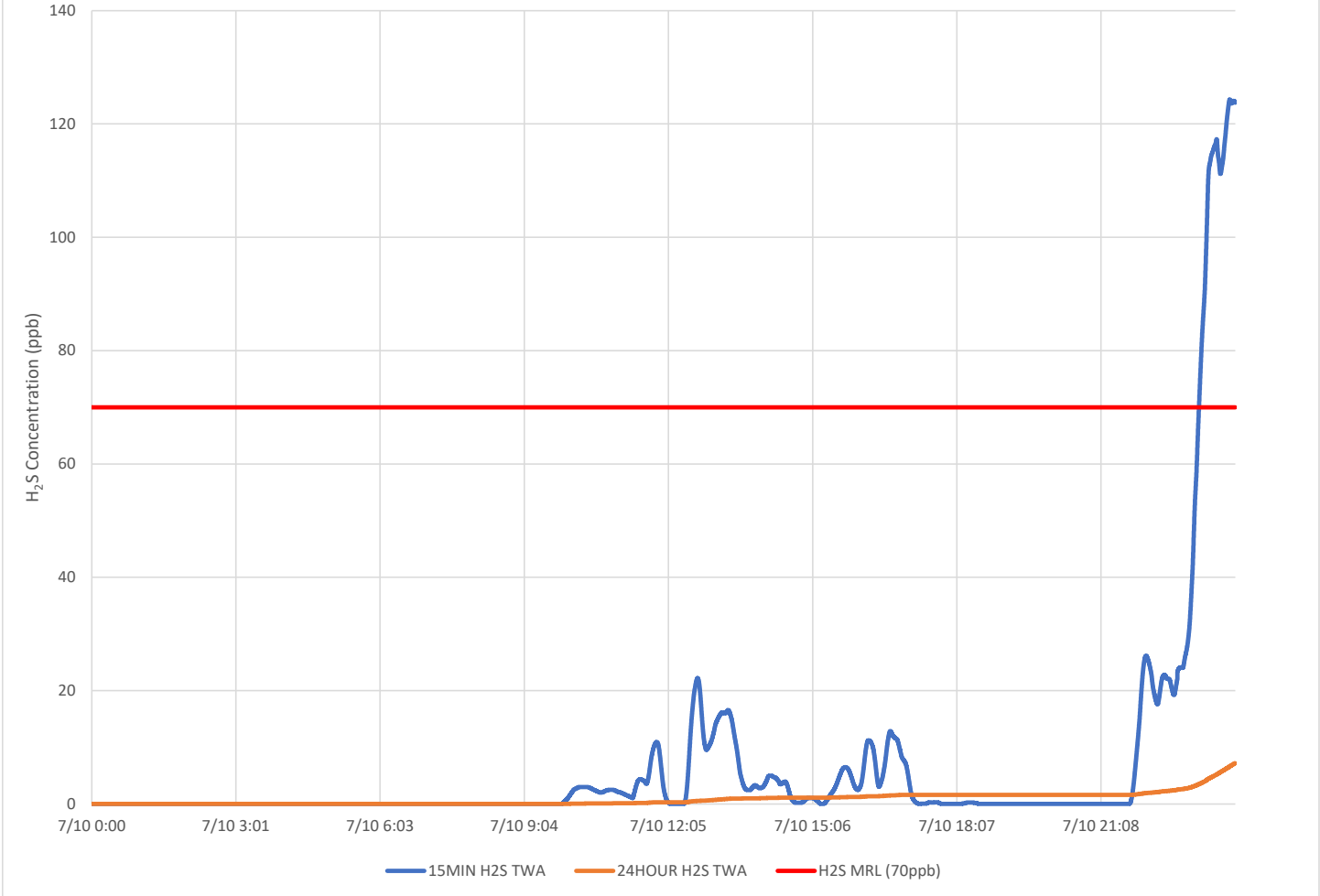
Catawba River July 10, 2021



Notes:

H₂S – Hydrogen Sulfide
MIN – Minute
MRL – Minimal Risk Level
ppb – Parts per billion

Catawba Express July 10, 2021



Notes:

H₂S – Hydrogen Sulfide
MIN – Minute
MRL – Minimal Risk Level
ppb – Parts per billion