

Air Monitoring Summary Tables

This table summarizes monitoring data collected using DHEC monitors and EPA's Viper wireless remote monitoring system.

Project Name: H₂S in South Carolina



From: 7/15/21
12:00 AM

To: 7/16/21
12:00 AM

Tom Stevens Rd							
Instrument	Analyte	ATSDR MRL Exceedance?	Number of Readings	Number of Detections	Concentration Range	Period Average	ATSDR MRL
SPM Flex 1	H2S	No	27330	1457	0 - 8 ppb	0.14 ppb	70 ppb

Catawba River							
Instrument	Analyte	ATSDR MRL Exceedance?	Number of Readings	Number of Detections	Concentration Range	Period Average	ATSDR MRL
SPM Flex 2	H2S	No	27411	11670	0 - 4 ppb	0.59 ppb	70 ppb

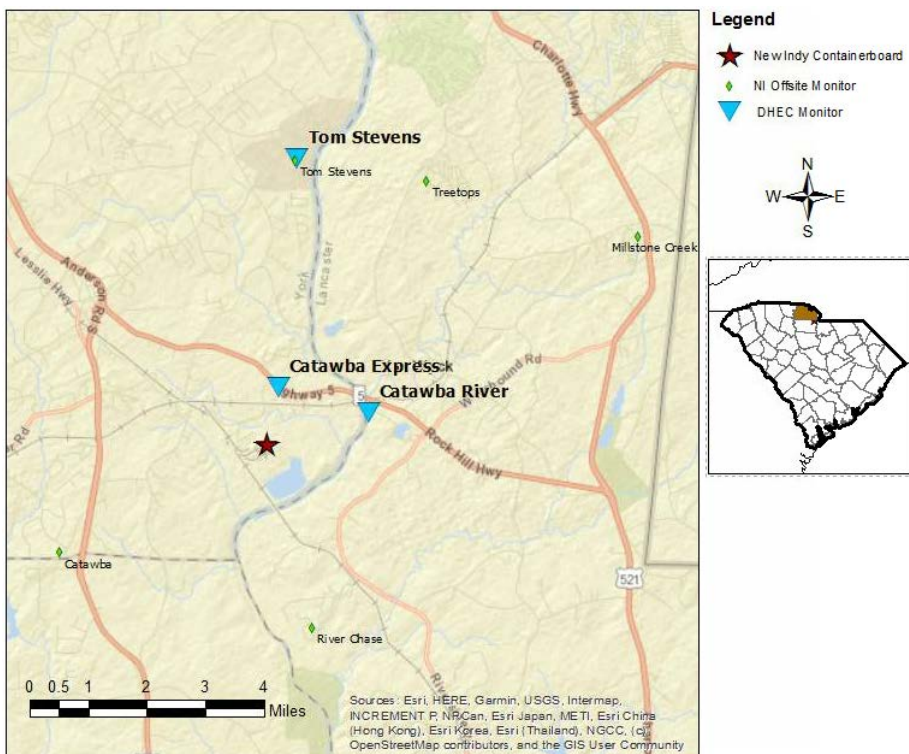
Catawba Express							
Instrument	Analyte	ATSDR MRL Exceedance?	Number of Readings	Number of Detections	Concentration Range	Period Average	ATSDR MRL
SPM Flex 3	H2S	No	13191	2074	0 - 4 ppb	0.28 ppb	70 ppb

Notes:

Hydrogen sulfide concentrations presented in this data summary table are converted from parts per million, the instrument readout units, to parts per billion.

- ATSDR MRL Agency for Toxic Substances and Disease Registry Minimal Risk Level - Acute Exposure (<14 days)
- H₂S Hydrogen Sulfide
- hr Hour
- ppb Parts per billion
- MRL Exceedance Defines if the 24-hr TWA exceeded the MRL at any time during the period of this report
- SPM Single Point Monitor
- TWA Time Weighted Average

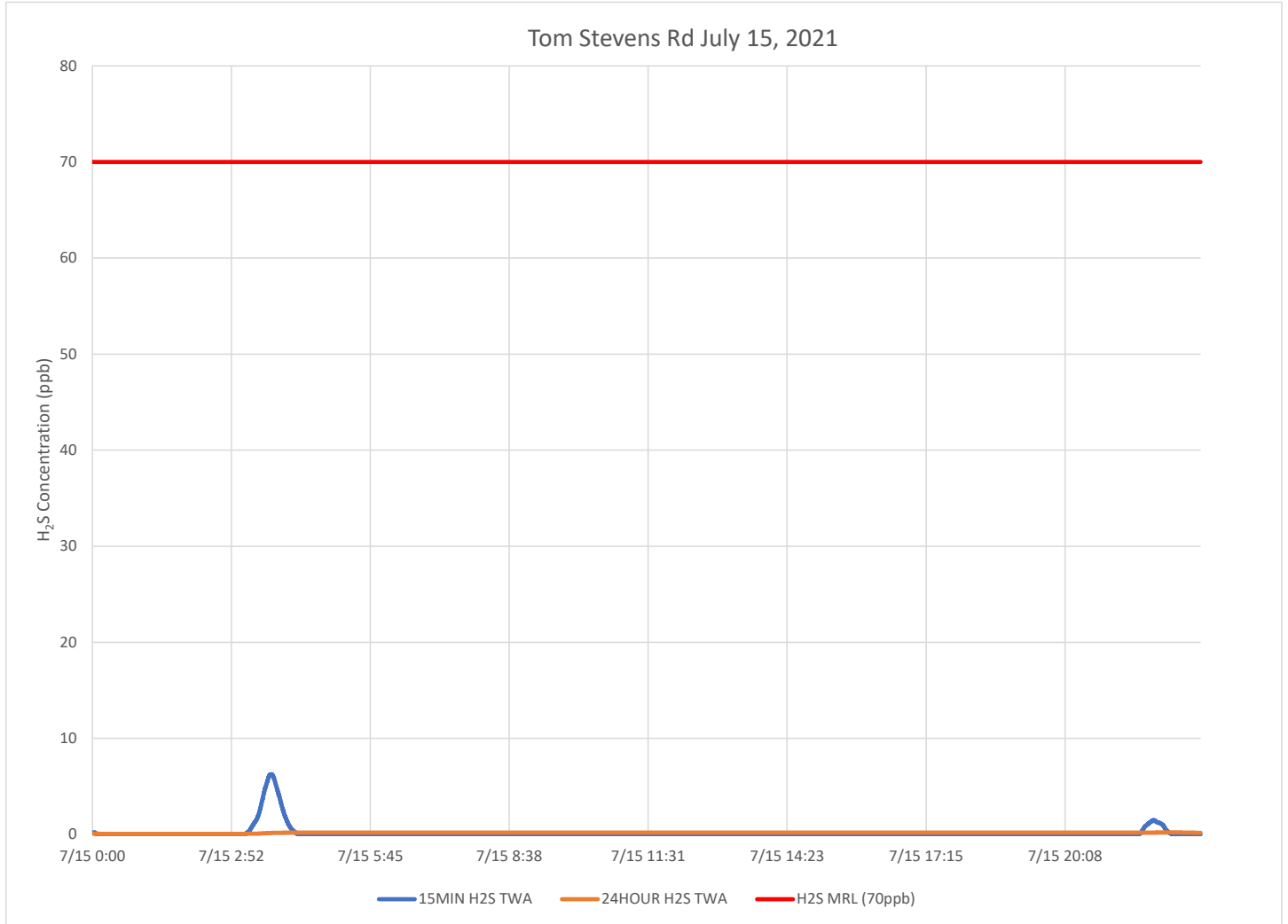
Catawba Express summary data is calculated only through 11:50 AM due to change in data system during this period



H₂S in South Carolina

Hydrogen Sulfide 15-min and 24-hr Time Weighted Graphs

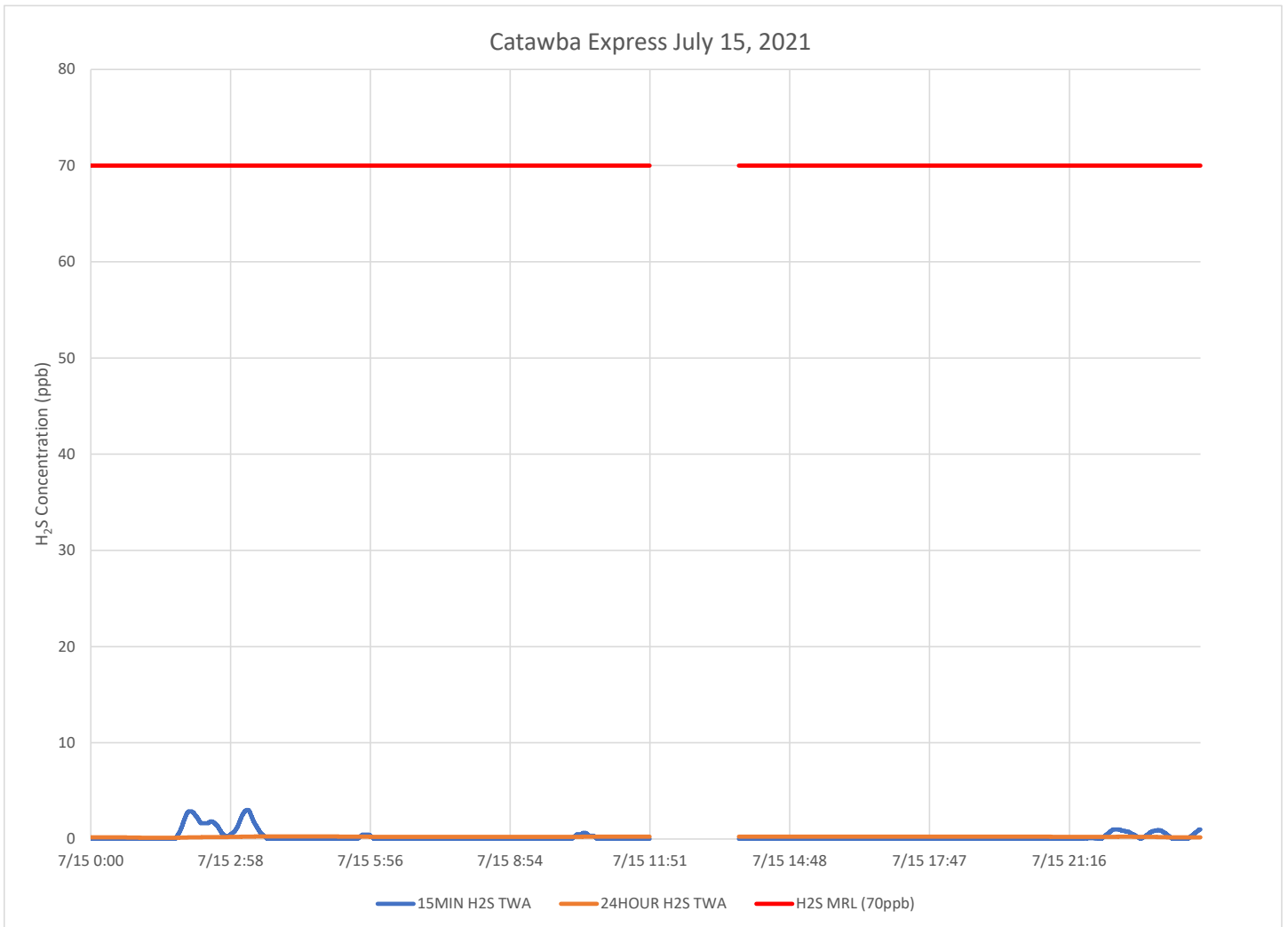
Predominant winds for this period were from the south southwest.



Notes:

- Time is Eastern Daylight Time
- H₂S – Hydrogen Sulfide
- MIN – Minute
- MRL – Minimal Risk Level
- ppb – Parts per billion

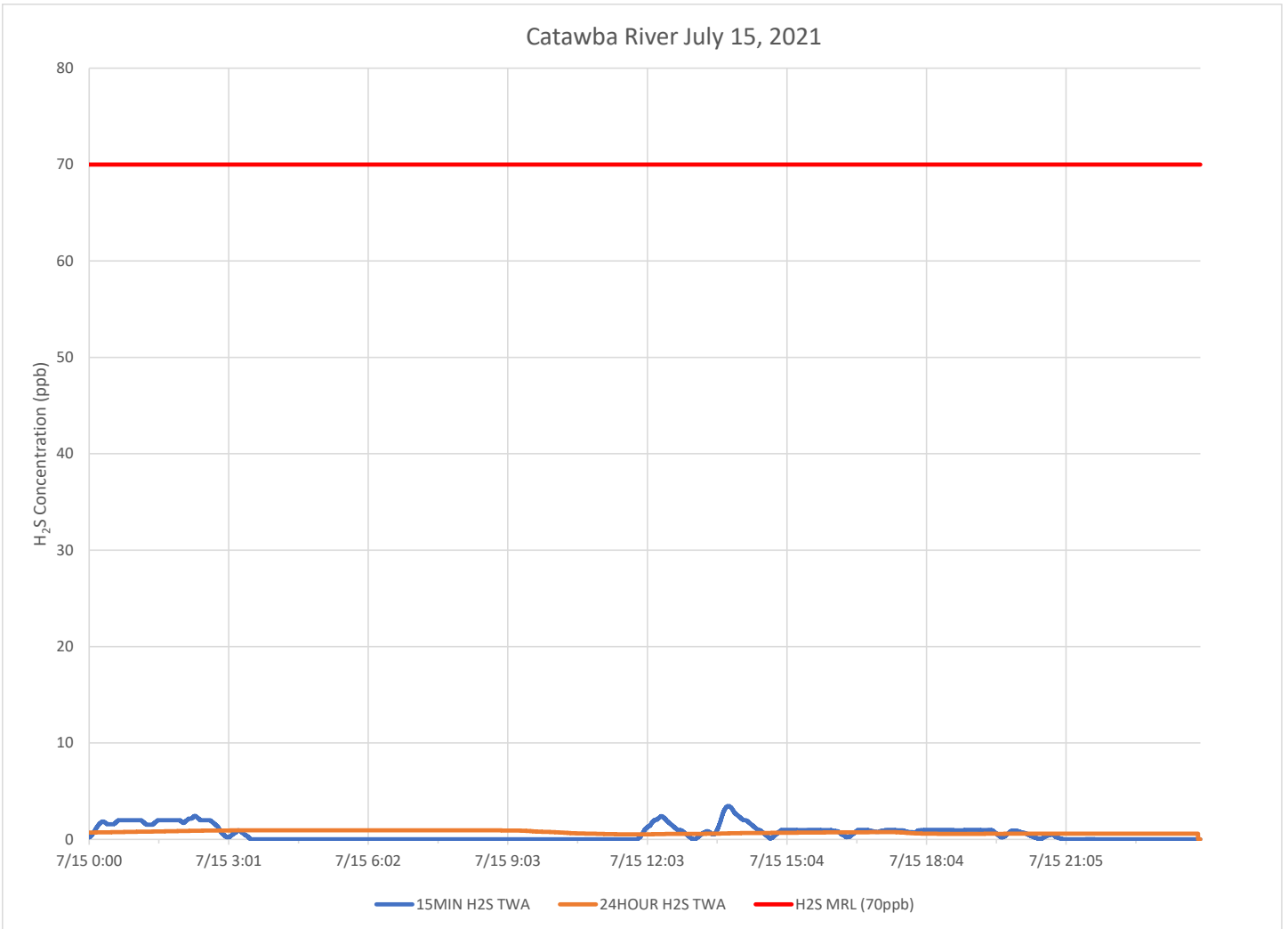
The communications gateway was switched out midday during this period to resolve the communications failures previously seen at this site.



Notes:

- Time is Eastern Daylight Time
- H₂S – Hydrogen Sulfide
- MIN – Minute
- MRL – Minimal Risk Level
- ppb – Parts per billion

Catawba River July 15, 2021



Notes:

Time is Eastern Daylight Time

H₂S – Hydrogen Sulfide

MIN – Minute

MRL – Minimal Risk Level

ppb – Parts per billion