

Air Monitoring Summary Tables

This table summarizes monitoring data collected using DHEC monitors and EPA's Viper wireless remote monitoring system.

Project Name: H₂S in South Carolina



From: 7/19/21
12:00 AM

To: 7/19/21
11:59 PM

Tom Stevens Rd							
Instrument	Analyte	ATSDR MRL Exceedance?	Number of Readings	Number of Detections	Concentration Range	Period Average	ATSDR MRL
SPM Flex 1	H2S	No	26778	7713	0 - 40 ppb	3.09 ppb	70 ppb

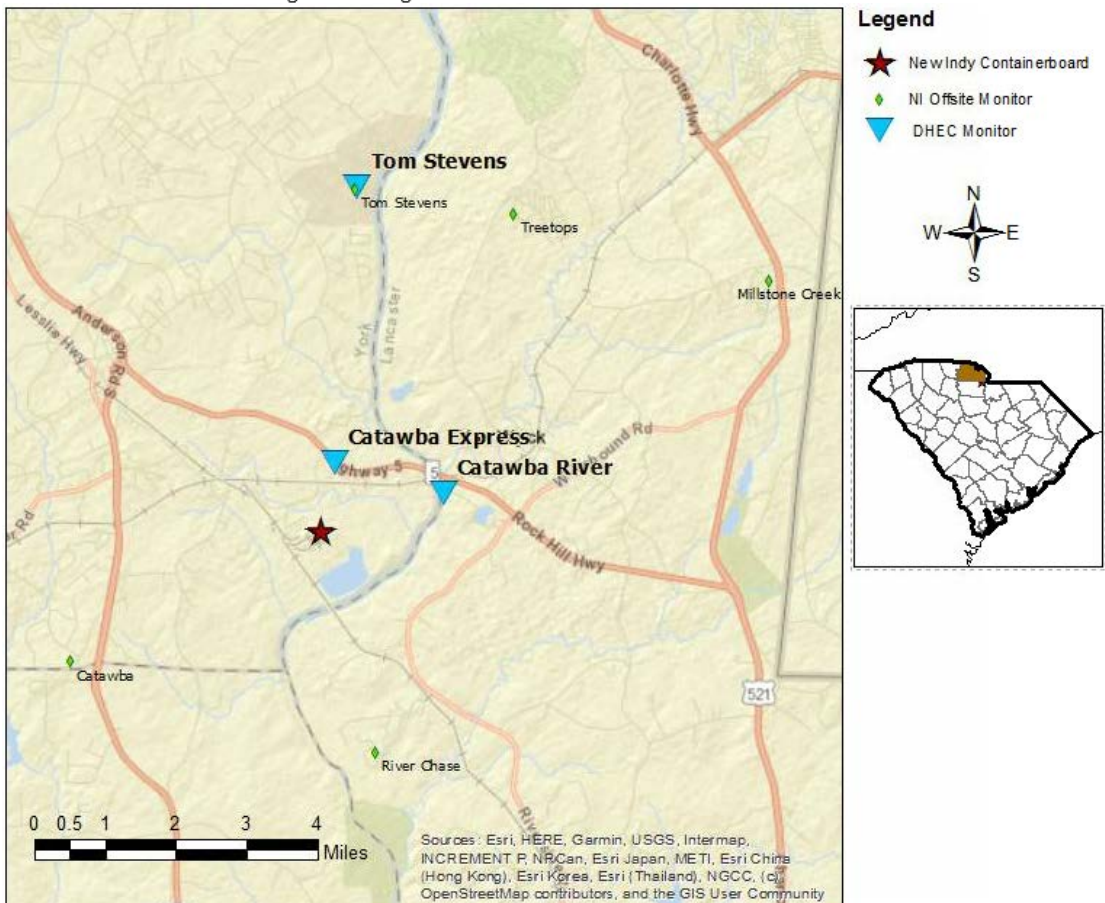
Catawba River							
Instrument	Analyte	ATSDR MRL Exceedance?	Number of Readings	Number of Detections	Concentration Range	Period Average	ATSDR MRL
SPM Flex 2	H2S	No	24806	3272	0 - 6 ppb	0.35 ppb	70 ppb

Catawba Express							
Instrument	Analyte	ATSDR MRL Exceedance?	Number of Readings	Number of Detections	Concentration Range	Period Average	ATSDR MRL
SPM Flex 3	H2S	No	25643	8998	0 - 36 ppb	1.57 ppb	70 ppb

Notes:

Hydrogen sulfide concentrations presented in this data summary table are converted from parts per million, the instrument readout units, to parts per billion.

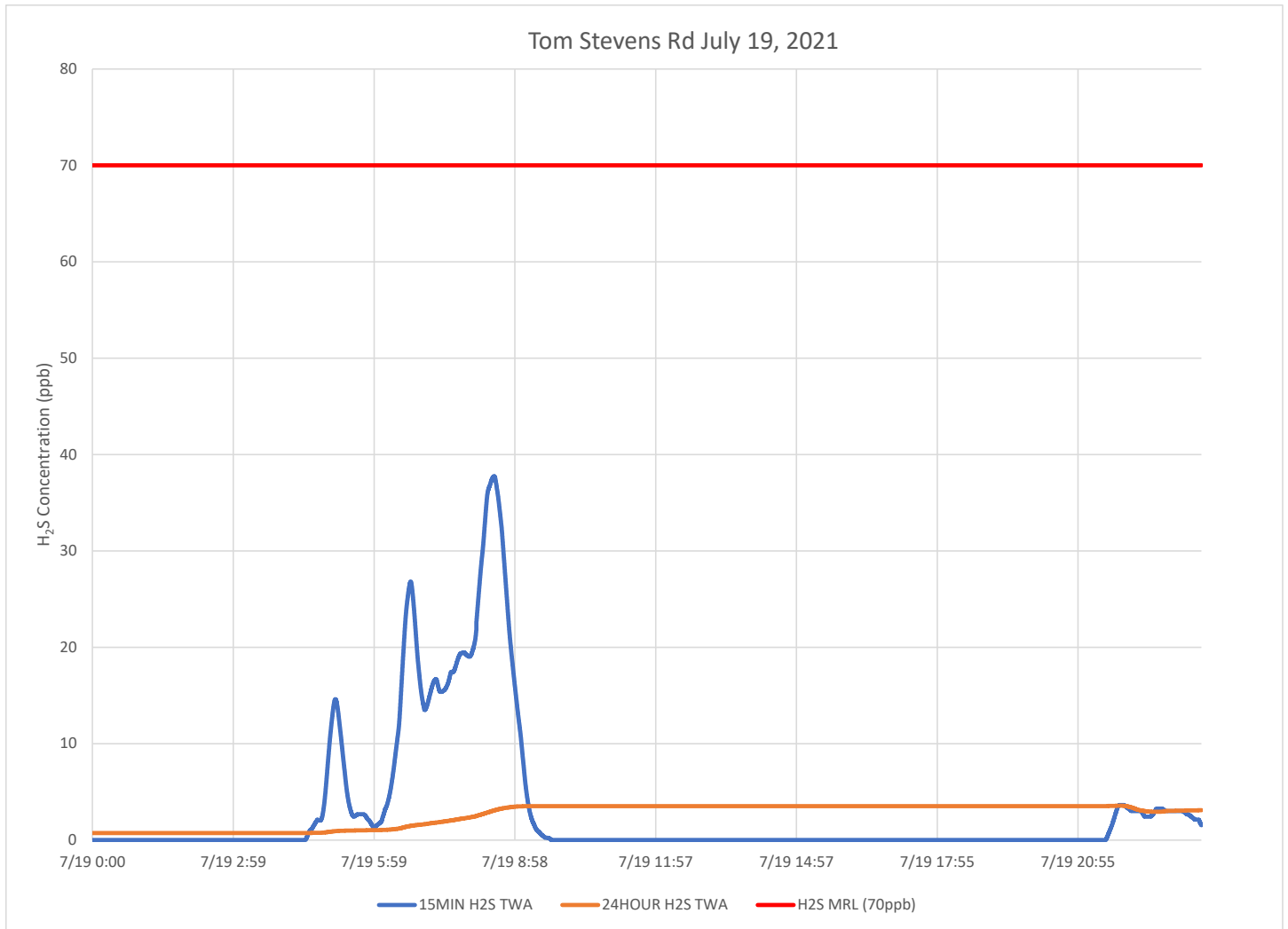
- ATSDR MRL Agency for Toxic Substances and Disease Registry Minimal Risk Level - Acute Exposure (<14 days)
- H₂S Hydrogen Sulfide
- hr Hour
- ppb Parts per billion
- MRL Exceedance Defines if the 24-hr TWA exceeded the MRL at any time during the period of this report
- SPM Single Point Monitor
- TWA Time Weighted Average



H₂S in South Carolina

Hydrogen Sulfide 15-min and 24-hr Time Weighted Graphs

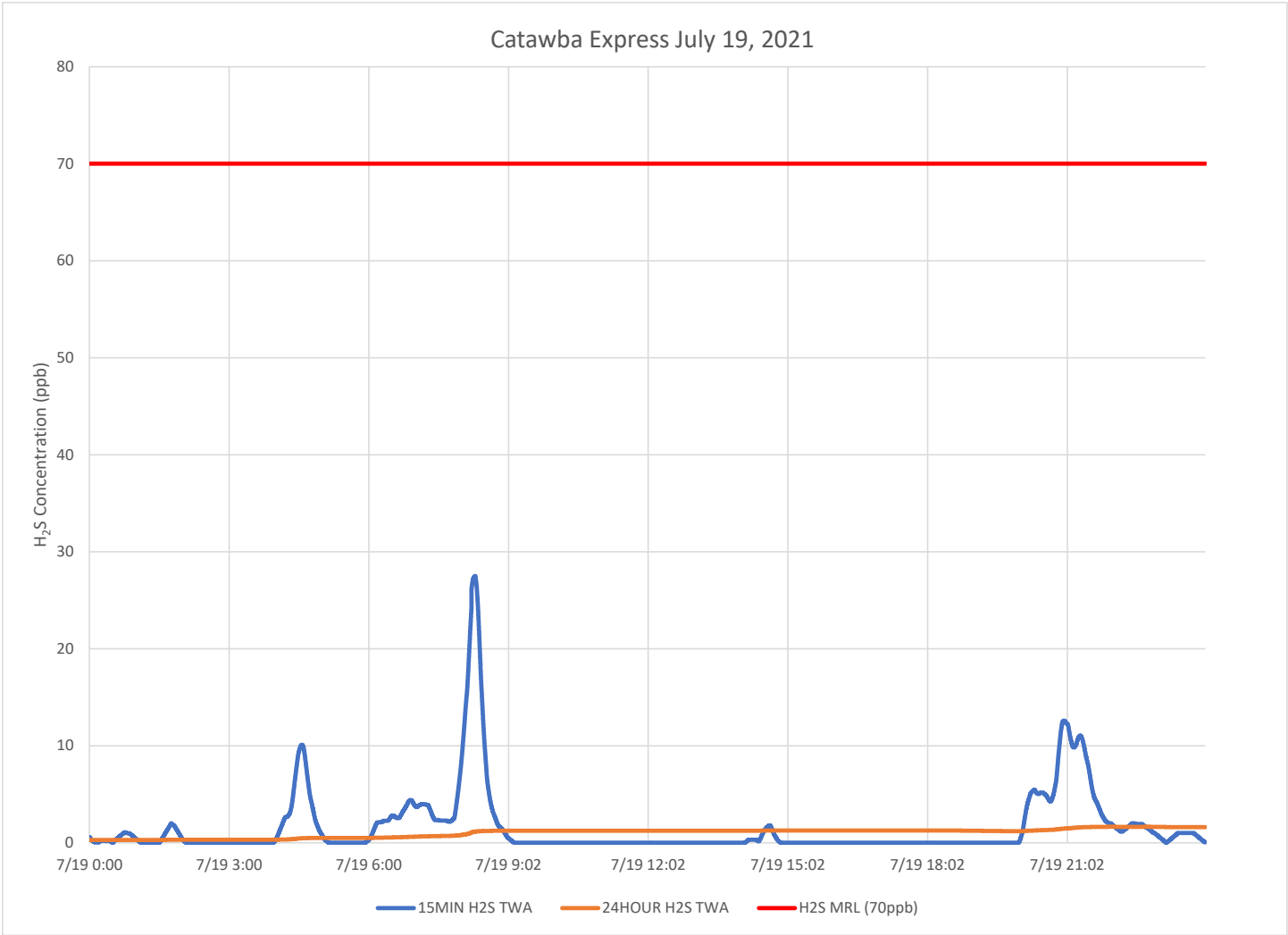
Predominant winds for this period were from the south southwest but there were variable winds with periods recorded having winds from the west southwest to north northwest and from the east..



Notes:

- Time is Eastern Daylight Time
- H₂S – Hydrogen Sulfide
- MIN – Minute
- MRL – Minimal Risk Level
- ppb – Parts per billion

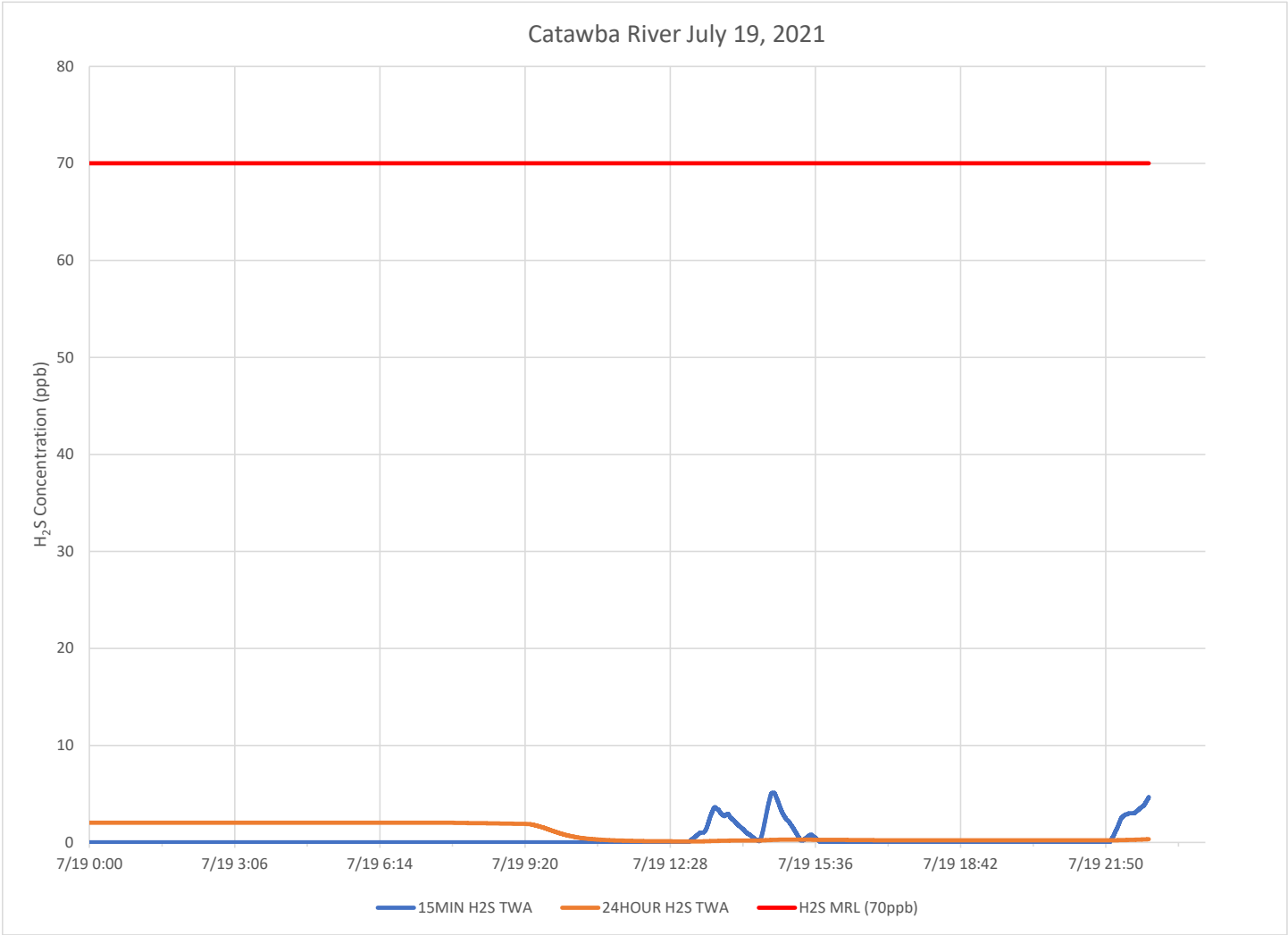
Catawba Express July 19, 2021



Notes:

Time is Eastern Daylight Time
H₂S – Hydrogen Sulfide
MIN – Minute
MRL – Minimal Risk Level
ppb – Parts per billion

The communications were interrupted ~1 hour and 15 minutes at the Catawba River site about midnight. If data is recovered, an amended report will be posted.



Notes:

- Time is Eastern Daylight Time
- H₂S – Hydrogen Sulfide
- MIN – Minute
- MRL – Minimal Risk Level
- ppb – Parts per billion