

Air Monitoring Summary Tables

This table summarizes monitoring data collected using DHEC monitors and EPA's Viper wireless remote monitoring system.

Project Name: H₂S in South Carolina



From: 8/17/21
12:00 AM

To: 8/17/21
11:59 PM

Tom Stevens Rd							
Instrument	Analyte	ATSDR MRL Exceedance?	Number of Readings	Number of Detections	Concentration Range	Period Average	ATSDR MRL
SPM Flex 1	H2S	No	3004	44	0 - 4 ppb	0.03 ppb	70 ppb

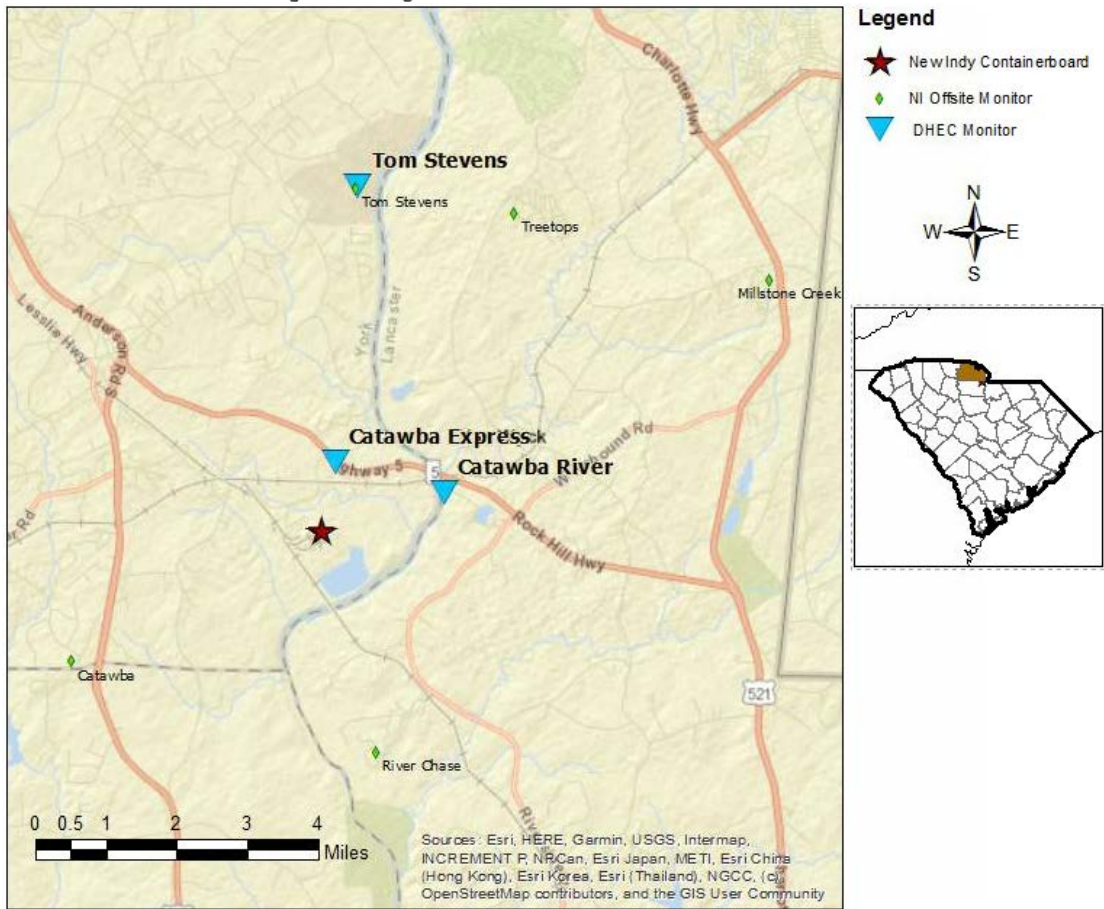
Catawba River							
Instrument	Analyte	ATSDR MRL Exceedance?	Number of Readings	Number of Detections	Concentration Range	Period Average	ATSDR MRL
SPM Flex 2	H2S	No	3014	13	0 - 3 ppb	0.01 ppb	70 ppb

Catawba Express							
Instrument	Analyte	ATSDR MRL Exceedance?	Number of Readings	Number of Detections	Concentration Range	Period Average	ATSDR MRL
SPM Flex 3	H2S	No	3012	1696	0 - 40 ppb	6.22 ppb	70 ppb

Notes:

Hydrogen sulfide concentrations presented in this data summary table are converted from parts per million, the instrument readout units, to parts per billion.

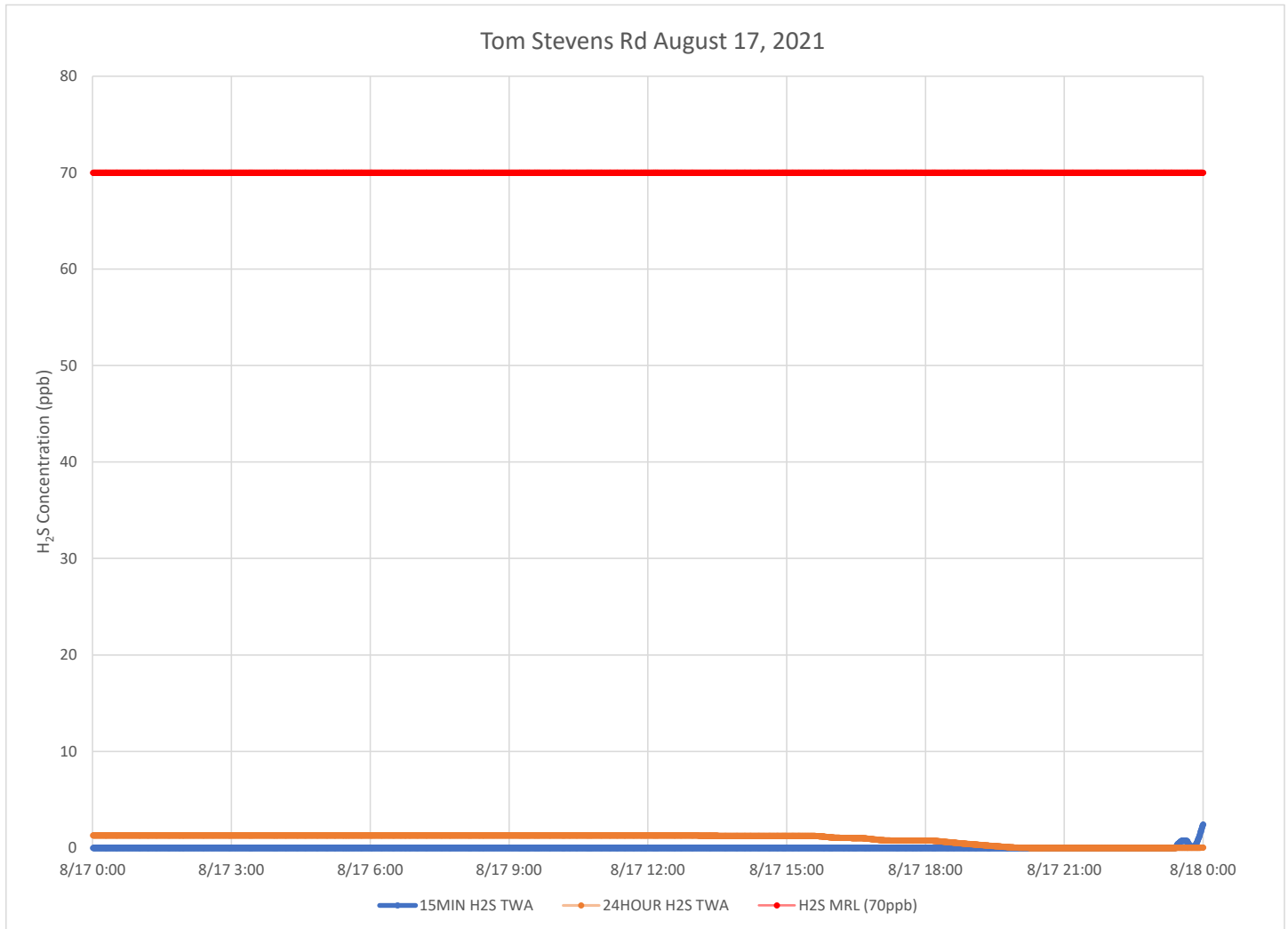
- ATSDR MRL Agency for Toxic Substances and Disease Registry Minimal Risk Level - Acute Exposure (<14 days)
- H₂S Hydrogen Sulfide
- hr Hour
- ppb Parts per billion
- MRL Exceedance Defines if the 24-hr TWA exceeded the MRL at any time during the period of this report
- SPM Single Point Monitor
- TWA Time Weighted Average



H₂S in South Carolina

Hydrogen Sulfide 15-min and 24-hr Time Weighted Graphs

Winds for this period were predominantly coming from the southeast to south southeast.



Notes:

Time is Eastern Daylight Time

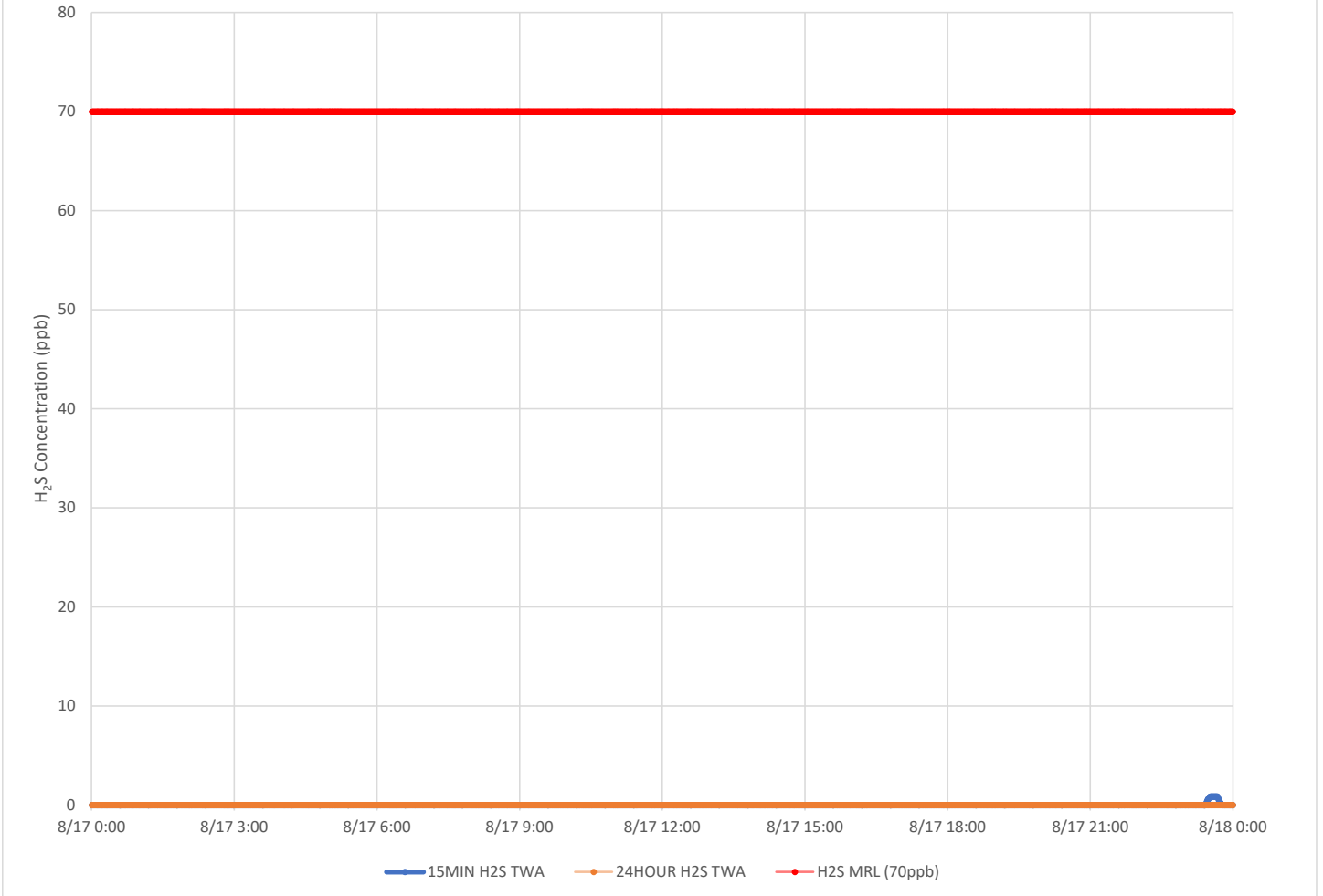
H₂S – Hydrogen Sulfide

MIN – Minute

MRL – Minimal Risk Level

ppb – Parts per billion

Catawba River August 17, 2021



Notes:

Time is Eastern Daylight Time

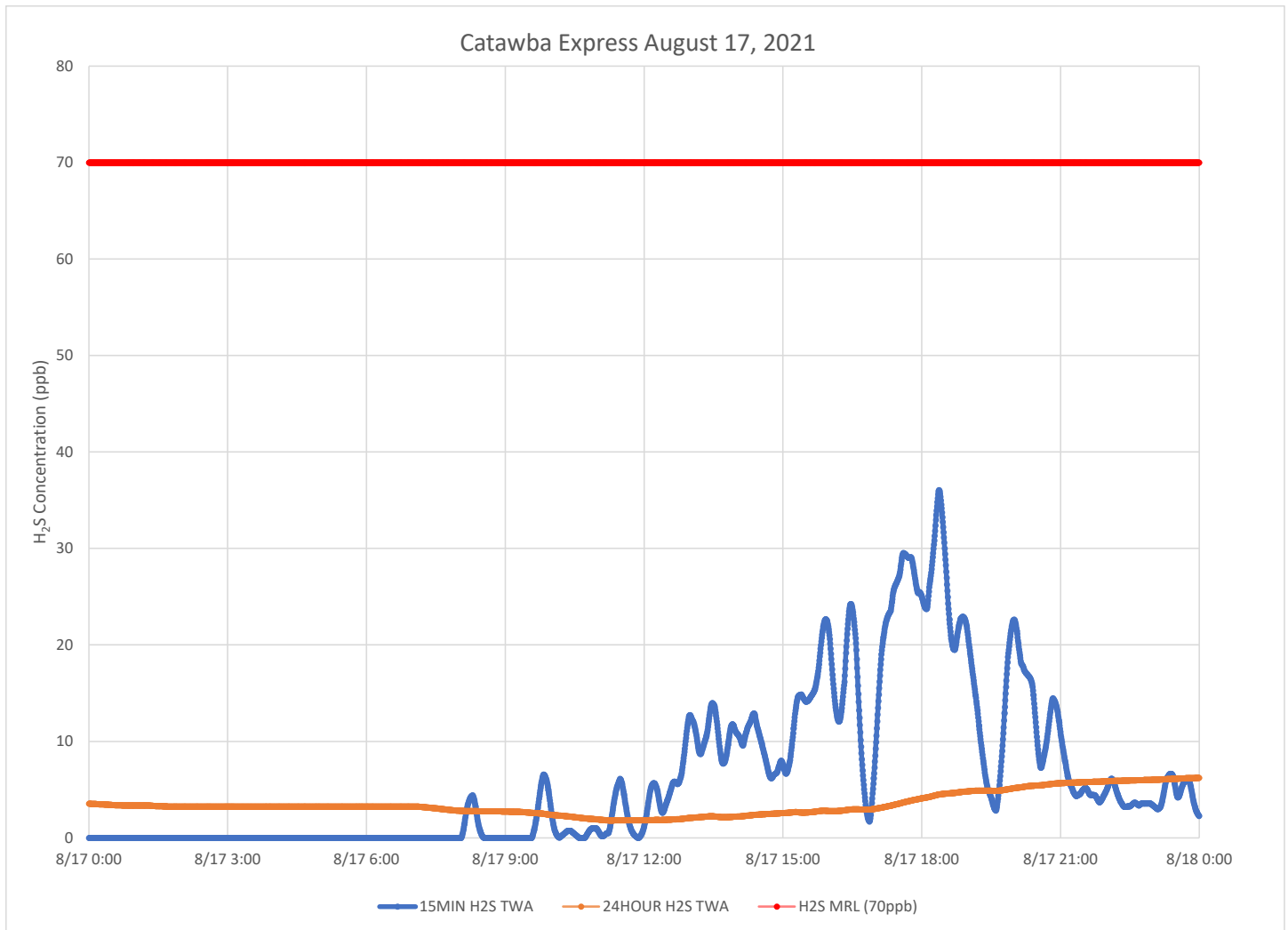
H₂S – Hydrogen Sulfide

MIN – Minute

MRL – Minimal Risk Level

ppb – Parts per billion

Catawba Express August 17, 2021



Notes:

Time is Eastern Daylight Time

H₂S – Hydrogen Sulfide

MIN – Minute

MRL – Minimal Risk Level

ppb – Parts per billion