

# Air Monitoring Summary Tables

This table summarizes monitoring data collected using DHEC monitors and EPA's Viper wireless remote monitoring system.

**Project Name:** H<sub>2</sub>S in South Carolina



**From:** 8/22/21  
12:00 AM

**To:** 8/22/21  
11:59 PM

Tom Stevens Rd							
Instrument	Analyte	ATSDR MRL Exceedance?	Number of Readings	Number of Detections	Concentration Range	Period Average	ATSDR MRL
SPM Flex 1	H2S	No	2999	887	0 - 12 ppb	0.86 ppb	70 ppb

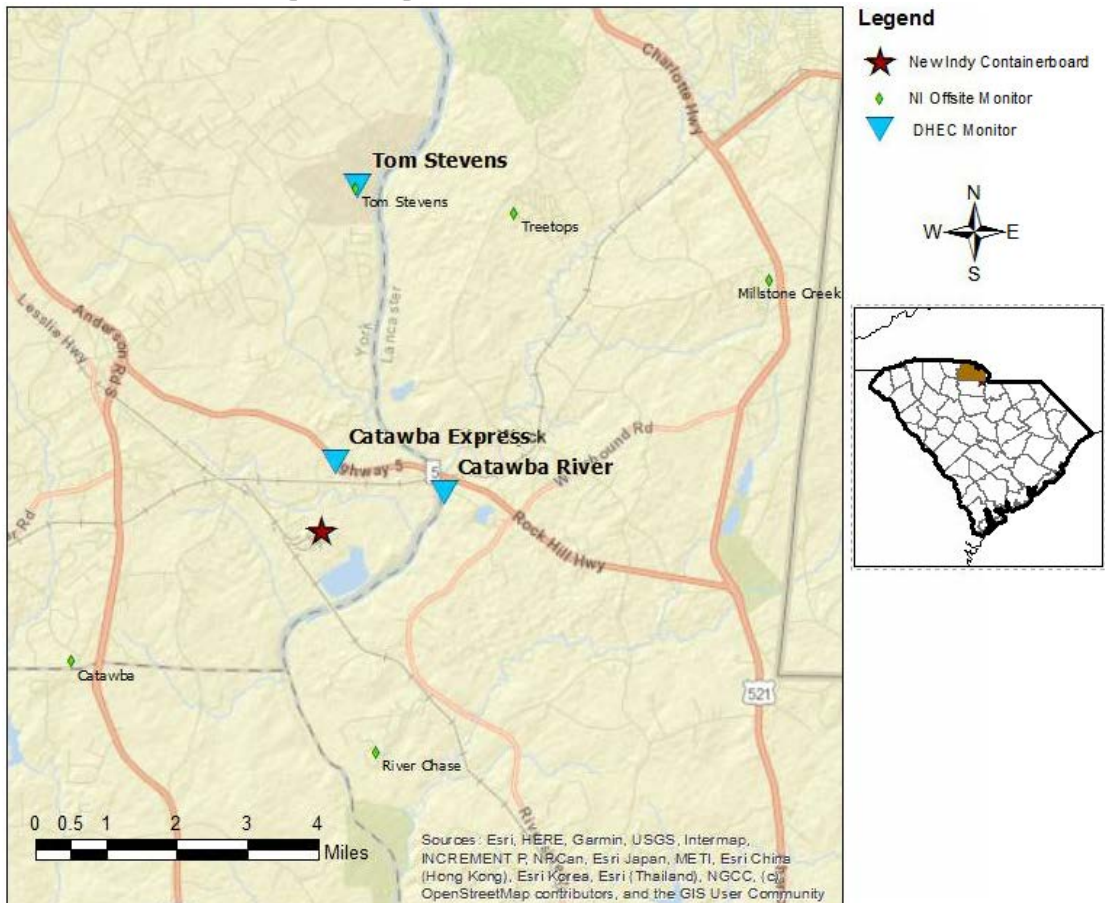
Catawba River							
Instrument	Analyte	ATSDR MRL Exceedance?	Number of Readings	Number of Detections	Concentration Range	Period Average	ATSDR MRL
SPM Flex 2	H2S	No	3007	552	0 - 40 ppb	1 ppb	70 ppb

Catawba Express							
Instrument	Analyte	ATSDR MRL Exceedance?	Number of Readings	Number of Detections	Concentration Range	Period Average	ATSDR MRL
SPM Flex 3	H2S	No	3011	1141	0 - 15 ppb	1.28 ppb	70 ppb

**Notes:**

Hydrogen sulfide concentrations presented in this data summary table are converted from parts per million, the instrument readout units, to parts per billion.

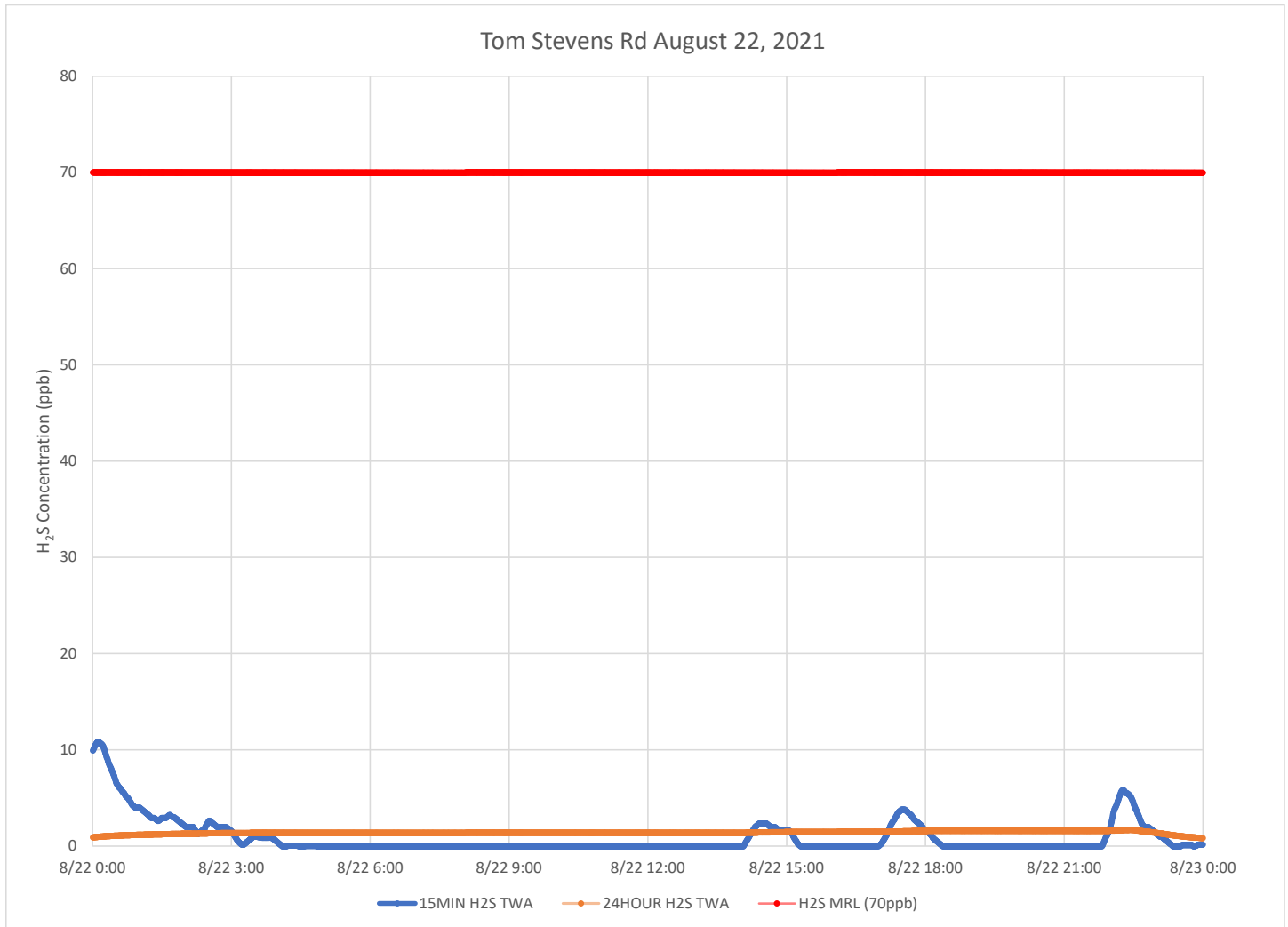
- ATSDR MRL      Agency for Toxic Substances and Disease Registry Minimal Risk Level - Acute Exposure (<14 days)
- H<sub>2</sub>S            Hydrogen Sulfide
- hr                Hour
- ppb              Parts per billion
- MRL Exceedance   Defines if the 24-hr TWA exceeded the MRL at any time during the period of this report
- SPM             Single Point Monitor
- TWA             Time Weighted Average



# H<sub>2</sub>S in South Carolina

## Hydrogen Sulfide 15-min and 24-hr Time Weighted Graphs

Winds for this period were calm to light, but when present, were mostly from the south southeast to south southwest.



### Notes:

Time is Eastern Daylight Time

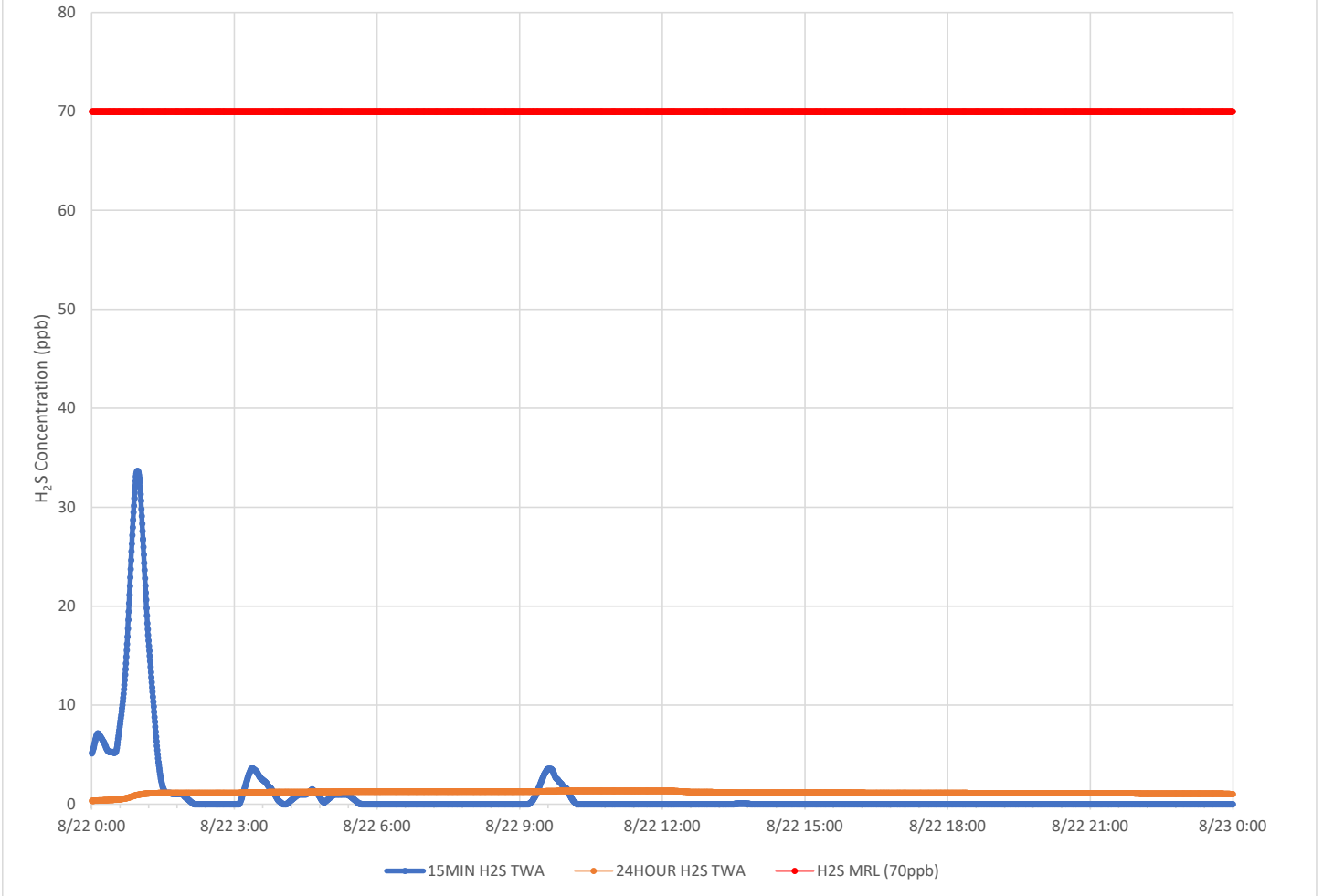
H<sub>2</sub>S – Hydrogen Sulfide

MIN – Minute

MRL – Minimal Risk Level

ppb – Parts per billion

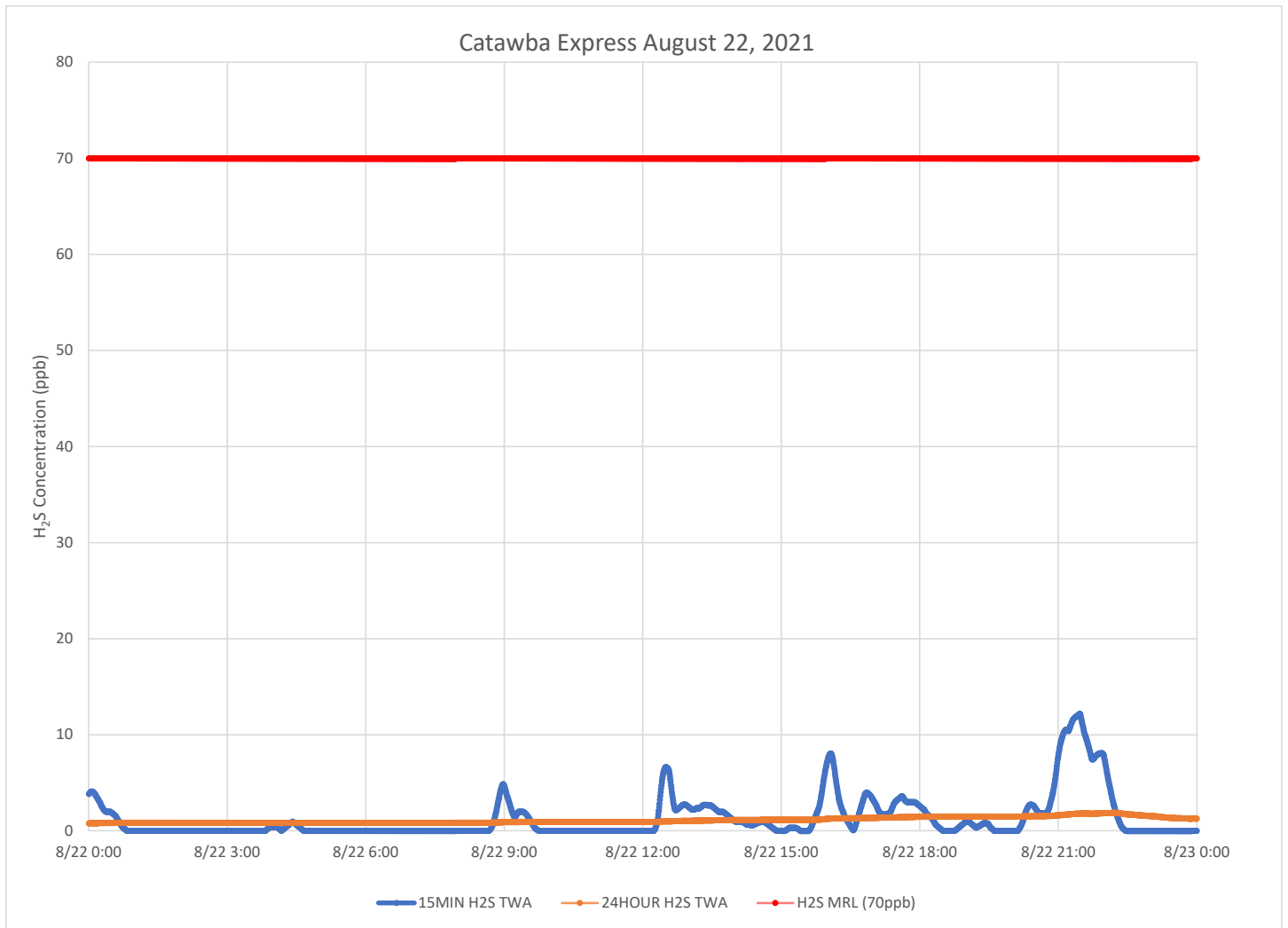
### Catawba River August 22, 2021



**Notes:**

- Time is Eastern Daylight Time
- H<sub>2</sub>S – Hydrogen Sulfide
- MIN – Minute
- MRL – Minimal Risk Level
- ppb – Parts per billion

### Catawba Express August 22, 2021



**Notes:**

- Time is Eastern Daylight Time
- H<sub>2</sub>S – Hydrogen Sulfide
- MIN – Minute
- MRL – Minimal Risk Level
- ppb – Parts per billion