

# Air Monitoring Summary Tables

This table summarizes monitoring data collected using DHEC monitors and EPA's Viper wireless remote monitoring system.

**Project Name:** H<sub>2</sub>S in South Carolina



**From:** 8/28/21  
12:00 AM

**To:** 8/28/21  
11:59 PM

Tom Stevens Rd							
Instrument	Analyte	ATSDR MRL Exceedance?	Number of Readings	Number of Detections	Concentration Range	Period Average	ATSDR MRL
SPM Flex 1	H2S	No	2998	880	0 - 13 ppb	1.01 ppb	70 ppb

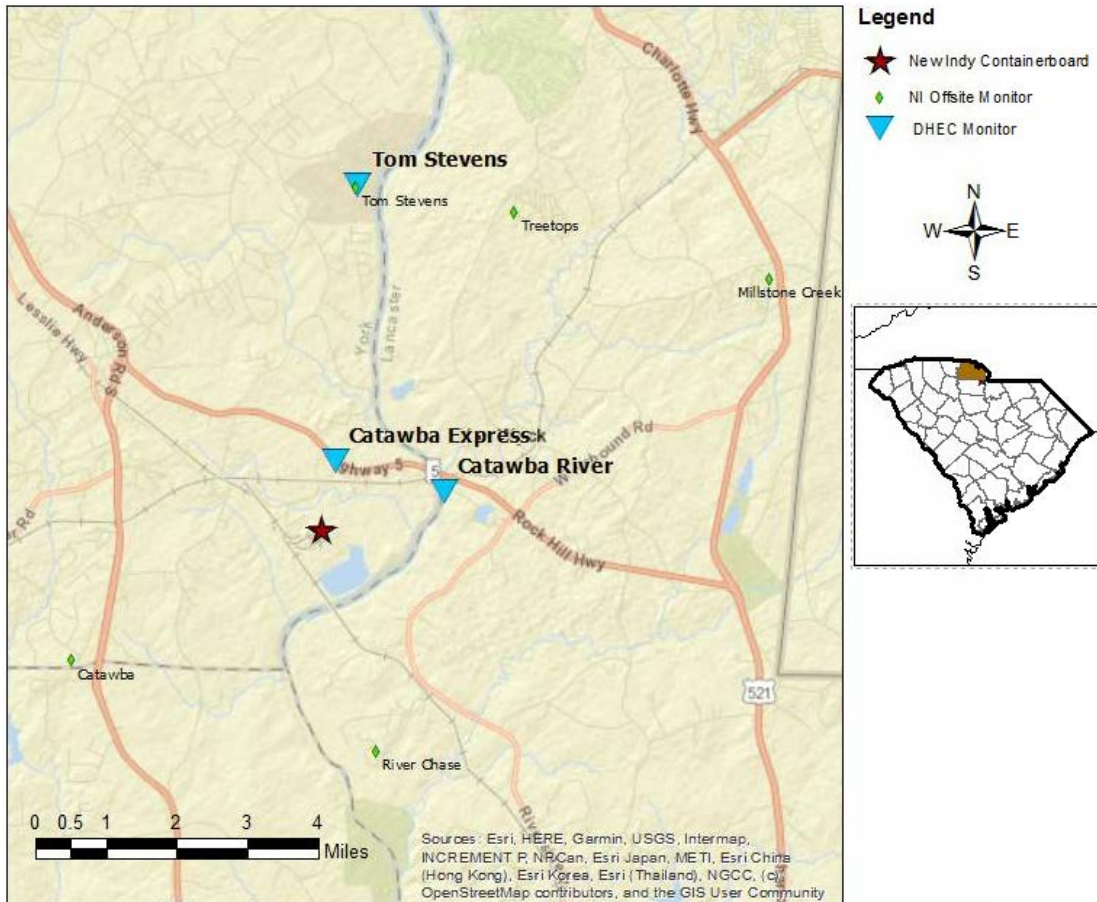
Catawba River							
Instrument	Analyte	ATSDR MRL Exceedance?	Number of Readings	Number of Detections	Concentration Range	Period Average	ATSDR MRL
SPM Flex 2	H2S	No	3023	1054	0 - 31 ppb	1.79 ppb	70 ppb

Catawba Express							
Instrument	Analyte	ATSDR MRL Exceedance?	Number of Readings	Number of Detections	Concentration Range	Period Average	ATSDR MRL
SPM Flex 3	H2S	No	2996	1618	0 - 39 ppb	4.25 ppb	70 ppb

**Notes:**

Hydrogen sulfide concentrations presented in this data summary table are converted from parts per million, the instrument readout units, to parts per billion.

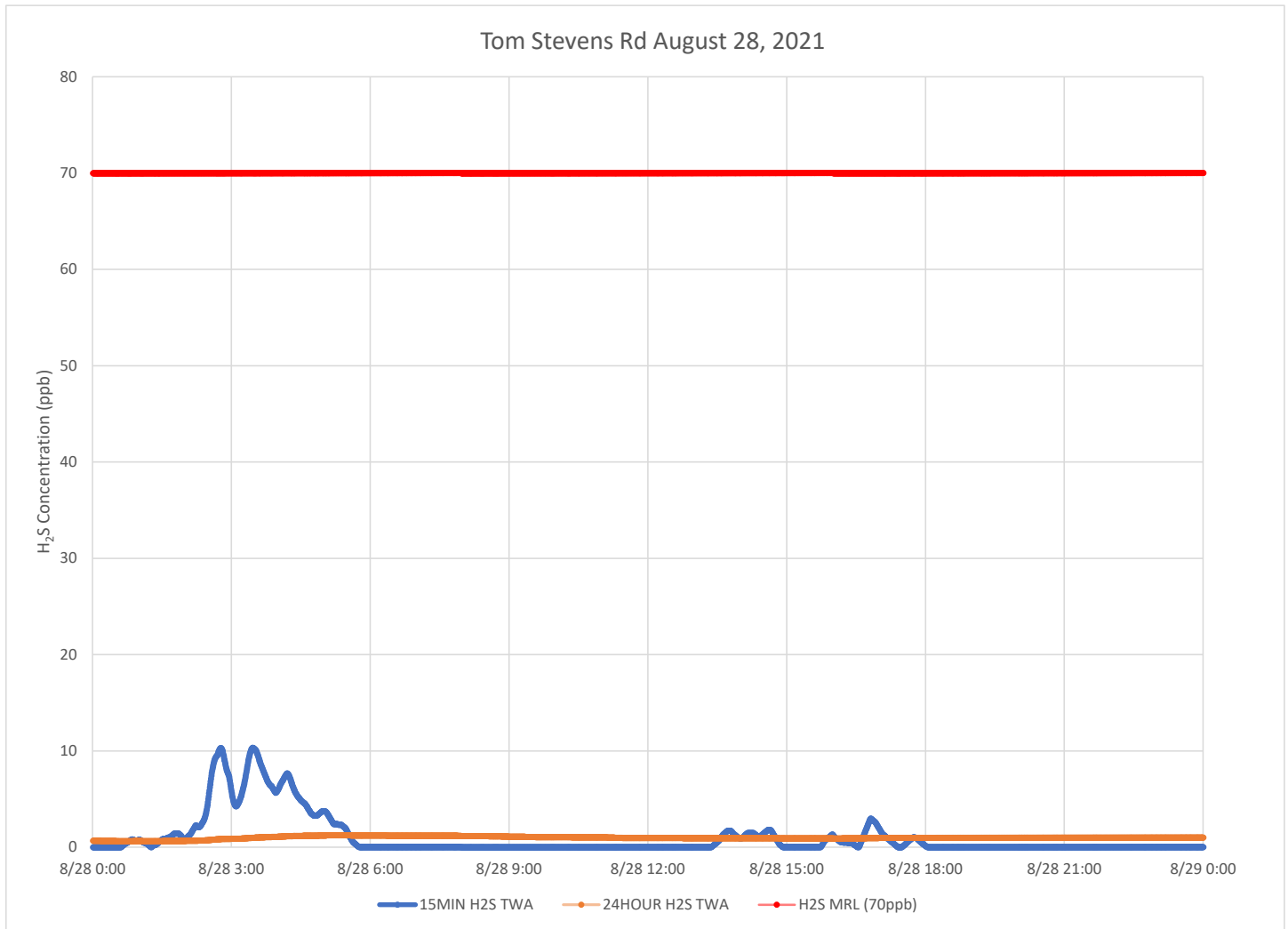
- ATSDR MRL      Agency for Toxic Substances and Disease Registry Minimal Risk Level - Acute Exposure (<14 days)
- H<sub>2</sub>S            Hydrogen Sulfide
- hr                Hour
- ppb              Parts per billion
- MRL Exceedance   Defines if the 24-hr TWA exceeded the MRL at any time during the period of this report
- SPM             Single Point Monitor
- TWA             Time Weighted Average



# H<sub>2</sub>S in South Carolina

## Hydrogen Sulfide 15-min and 24-hr Time Weighted Graphs

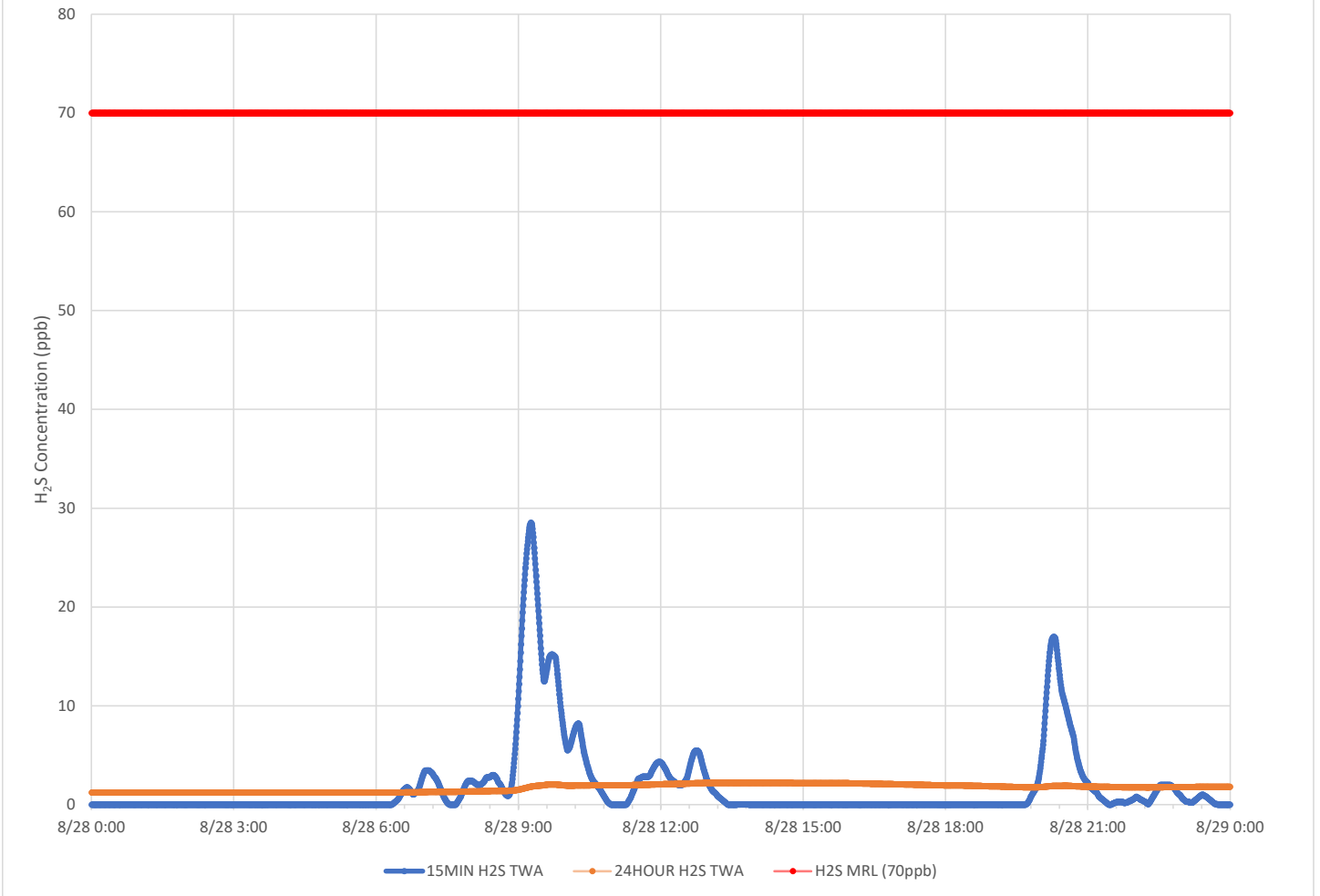
Winds for this period were variable, from the southeast through west northwest, but predominantly from the south southwest.



**Notes:**

- Time is Eastern Daylight Time
- H<sub>2</sub>S – Hydrogen Sulfide
- MIN – Minute
- MRL – Minimal Risk Level
- ppb – Parts per billion

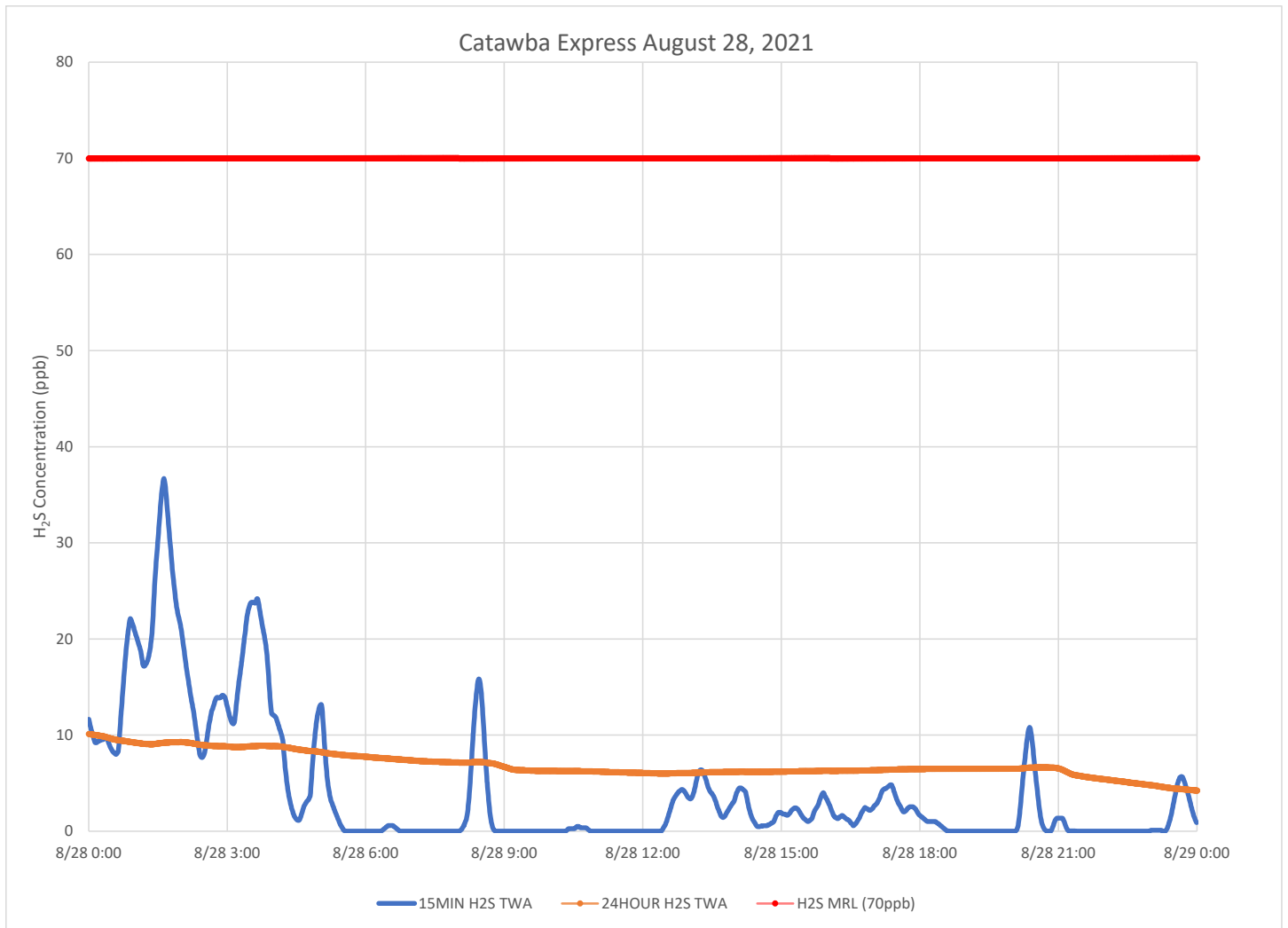
### Catawba River August 28, 2021



**Notes:**

Time is Eastern Daylight Time  
H<sub>2</sub>S – Hydrogen Sulfide  
MIN – Minute  
MRL – Minimal Risk Level  
ppb – Parts per billion

### Catawba Express August 28, 2021



**Notes:**

- Time is Eastern Daylight Time
- H<sub>2</sub>S – Hydrogen Sulfide
- MIN – Minute
- MRL – Minimal Risk Level
- ppb – Parts per billion