

Air Monitoring Summary Tables

This table summarizes monitoring data collected using DHEC monitors and EPA's Viper wireless remote monitoring system.

Project Name: H₂S in South Carolina



From: 8/30/21
12:00 AM

To: 8/30/21
11:59 PM

| Tom Stevens Rd | | | | | | | |
|----------------|---------|-----------------------|--------------------|----------------------|---------------------|----------------|-----------|
| Instrument | Analyte | ATSDR MRL Exceedance? | Number of Readings | Number of Detections | Concentration Range | Period Average | ATSDR MRL |
| SPM Flex 1 | H2S | No | 3004 | 793 | 0 - 18 ppb | 1.17 ppb | 70 ppb |

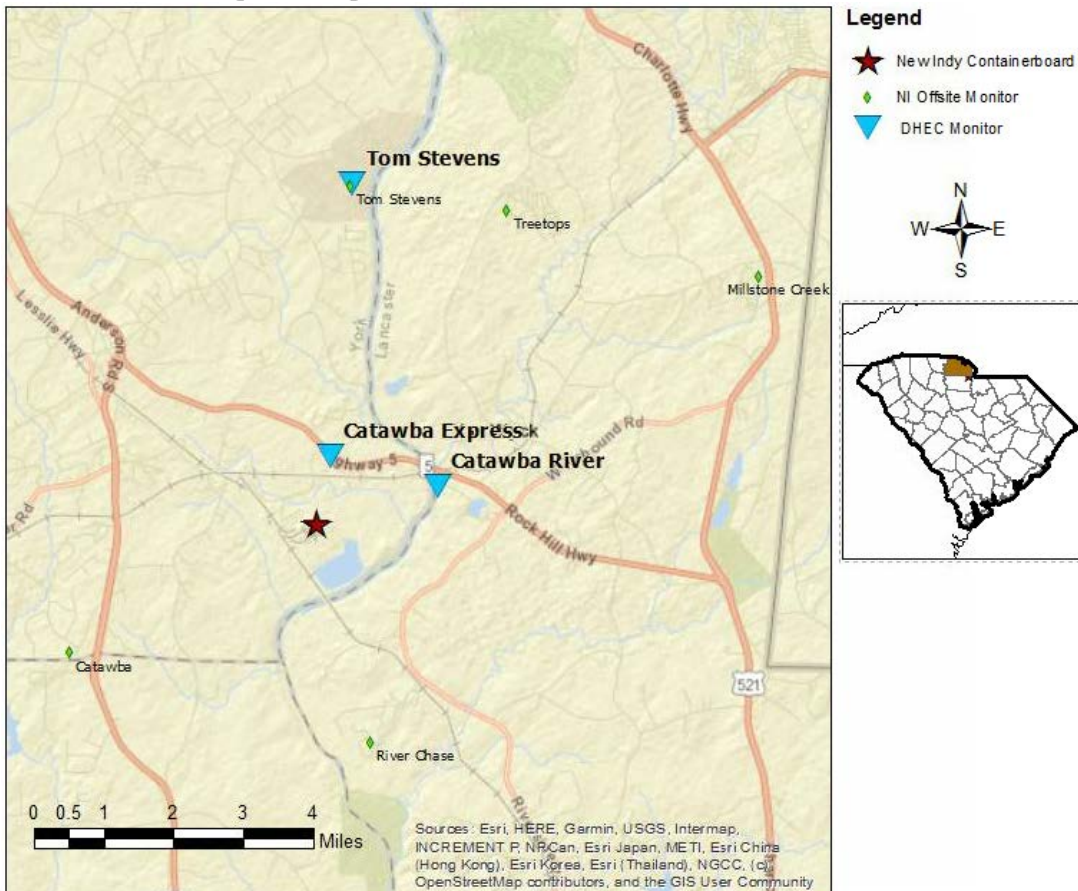
| Catawba River | | | | | | | |
|---------------|---------|-----------------------|--------------------|----------------------|---------------------|----------------|-----------|
| Instrument | Analyte | ATSDR MRL Exceedance? | Number of Readings | Number of Detections | Concentration Range | Period Average | ATSDR MRL |
| SPM Flex 2 | H2S | No | 3005 | 1780 | 0 - 64 ppb | 7.45 ppb | 70 ppb |

| Catawba Express | | | | | | | |
|-----------------|---------|-----------------------|--------------------|----------------------|---------------------|----------------|-----------|
| Instrument | Analyte | ATSDR MRL Exceedance? | Number of Readings | Number of Detections | Concentration Range | Period Average | ATSDR MRL |
| SPM Flex 3 | H2S | No | 3004 | 462 | 0 - 11 ppb | 0.45 ppb | 70 ppb |

Notes:

Hydrogen sulfide concentrations presented in this data summary table are converted from parts per million, the instrument readout units, to parts per billion.

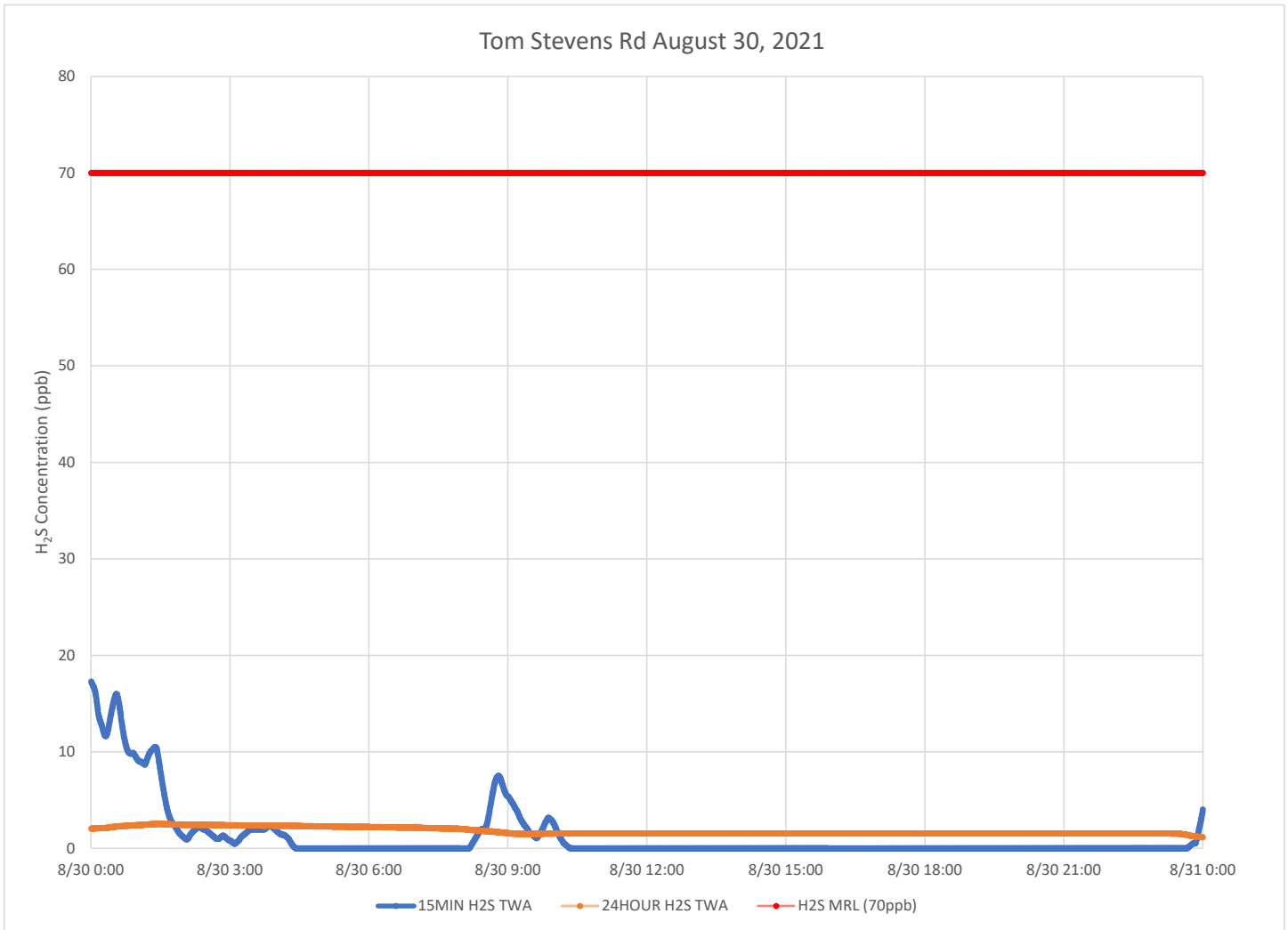
- ATSDR MRL Agency for Toxic Substances and Disease Registry Minimal Risk Level - Acute Exposure (<14 days)
- H₂S Hydrogen Sulfide
- hr Hour
- ppb Parts per billion
- MRL Exceedance Defines if the 24-hr TWA exceeded the MRL at any time during the period of this report
- SPM Single Point Monitor
- TWA Time Weighted Average



H₂S in South Carolina

Hydrogen Sulfide 15-min and 24-hr Time Weighted Graphs

Winds for this period were primarily from the south southwest to southwest.



Notes:

Time is Eastern Daylight Time

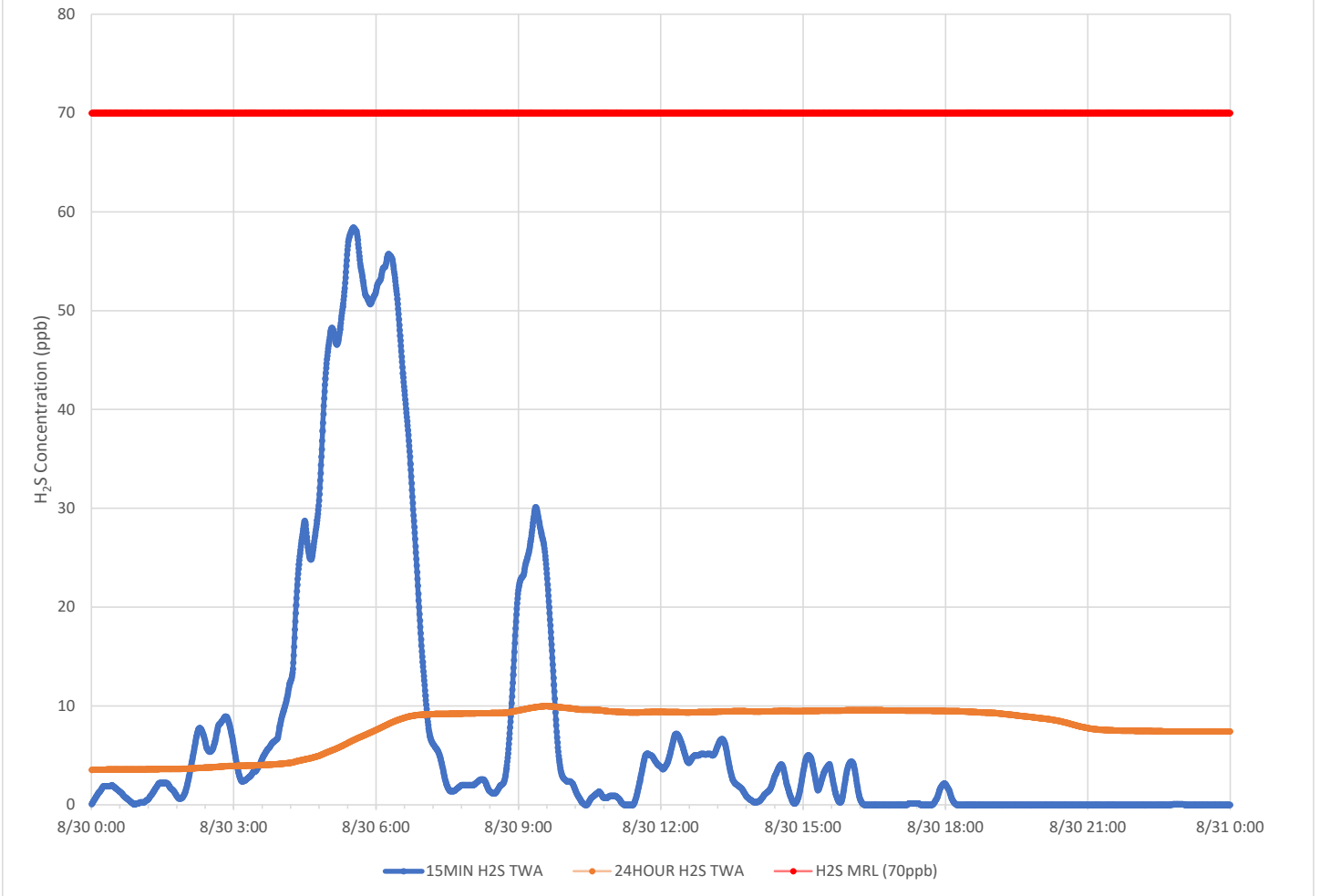
H₂S – Hydrogen Sulfide

MIN – Minute

MRL – Minimal Risk Level

ppb – Parts per billion

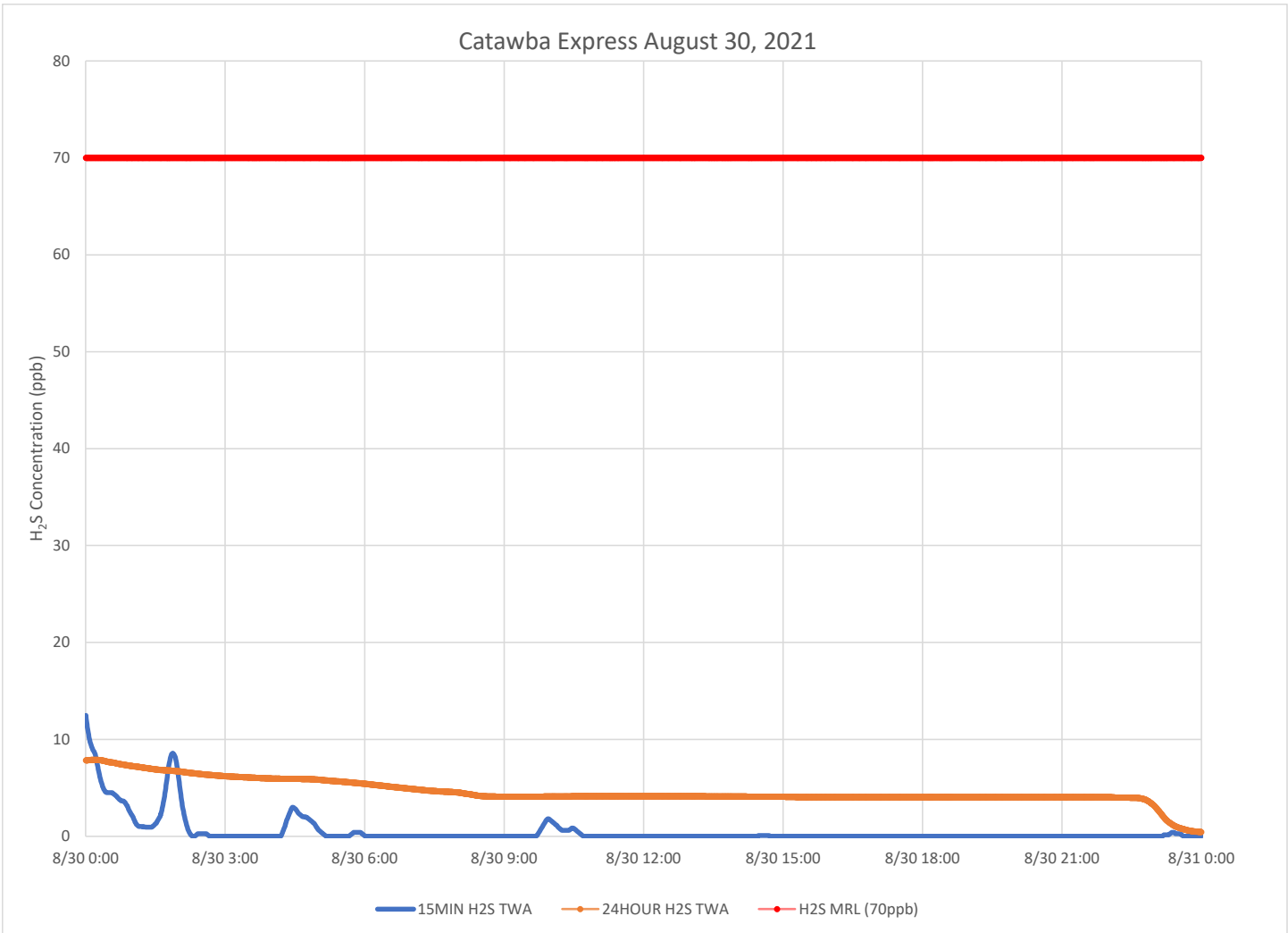
Catawba River August 30, 2021



Notes:

- Time is Eastern Daylight Time
- H₂S – Hydrogen Sulfide
- MIN – Minute
- MRL – Minimal Risk Level
- ppb – Parts per billion

Catawba Express August 30, 2021



Notes:

Time is Eastern Daylight Time

H₂S – Hydrogen Sulfide

MIN – Minute

MRL – Minimal Risk Level

ppb – Parts per billion