

# Air Monitoring Summary Tables

This table summarizes monitoring data collected using DHEC monitors and EPA's Viper wireless remote monitoring system.

**Project Name:** H<sub>2</sub>S in South Carolina



**From:** 9/23/21  
12:00 AM

**To:** 9/23/21  
11:59 PM

| Tom Stevens Rd |         |                       |                    |                      |                     |                |           |
|----------------|---------|-----------------------|--------------------|----------------------|---------------------|----------------|-----------|
| Instrument     | Analyte | ATSDR MRL Exceedance? | Number of Readings | Number of Detections | Concentration Range | Period Average | ATSDR MRL |
| SPM Flex 1     | H2S     | No                    | 2999               | 0                    | 0 - 0 ppb           | 0 ppb          | 70 ppb    |

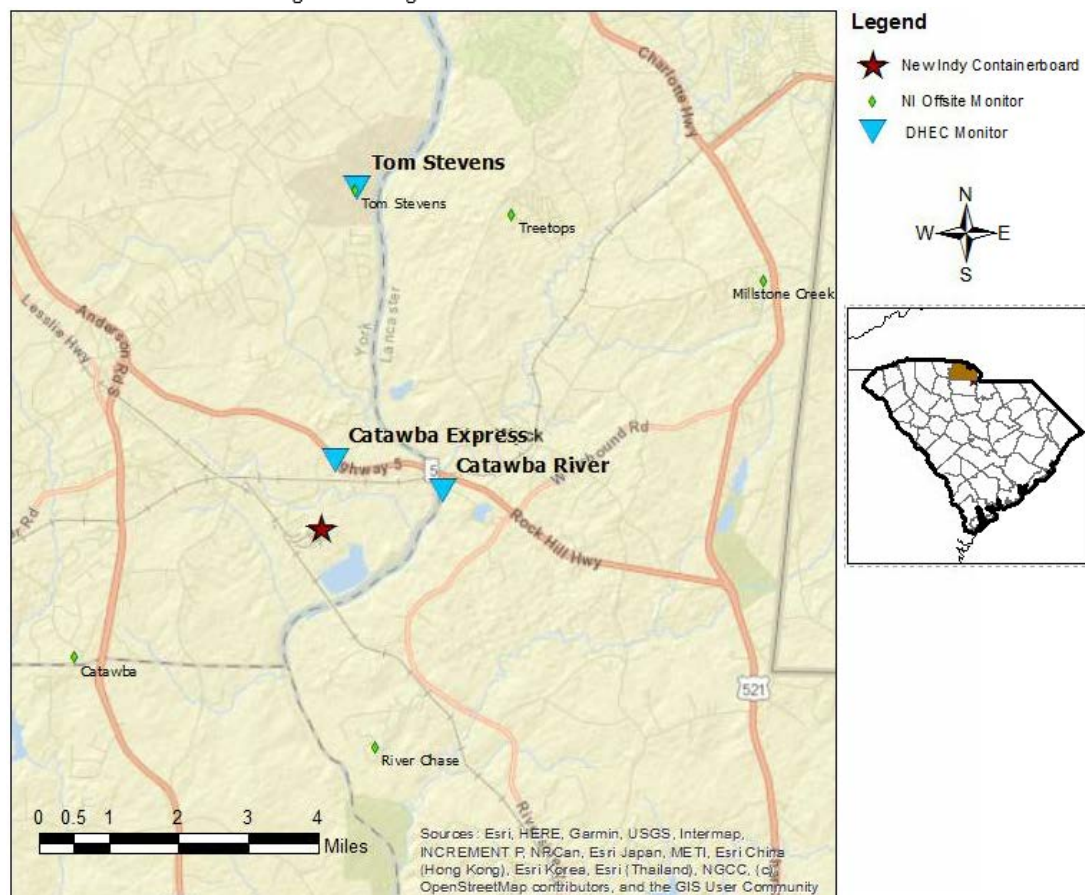
| Catawba River |         |                       |                    |                      |                     |                |           |
|---------------|---------|-----------------------|--------------------|----------------------|---------------------|----------------|-----------|
| Instrument    | Analyte | ATSDR MRL Exceedance? | Number of Readings | Number of Detections | Concentration Range | Period Average | ATSDR MRL |
| SPM Flex 2    | H2S     | No                    | 3009               | 103                  | 0 - 3 ppb           | 0.07 ppb       | 70 ppb    |

| Catawba Express |         |                       |                    |                      |                     |                |           |
|-----------------|---------|-----------------------|--------------------|----------------------|---------------------|----------------|-----------|
| Instrument      | Analyte | ATSDR MRL Exceedance? | Number of Readings | Number of Detections | Concentration Range | Period Average | ATSDR MRL |
| SPM Flex 3      | H2S     | No                    | 2981               | 0                    | 0 - 0 ppb           | 0 ppb          | 70 ppb    |

**Notes:**

Hydrogen sulfide concentrations presented in this data summary table are converted from parts per million, the instrument readout units, to parts per billion.

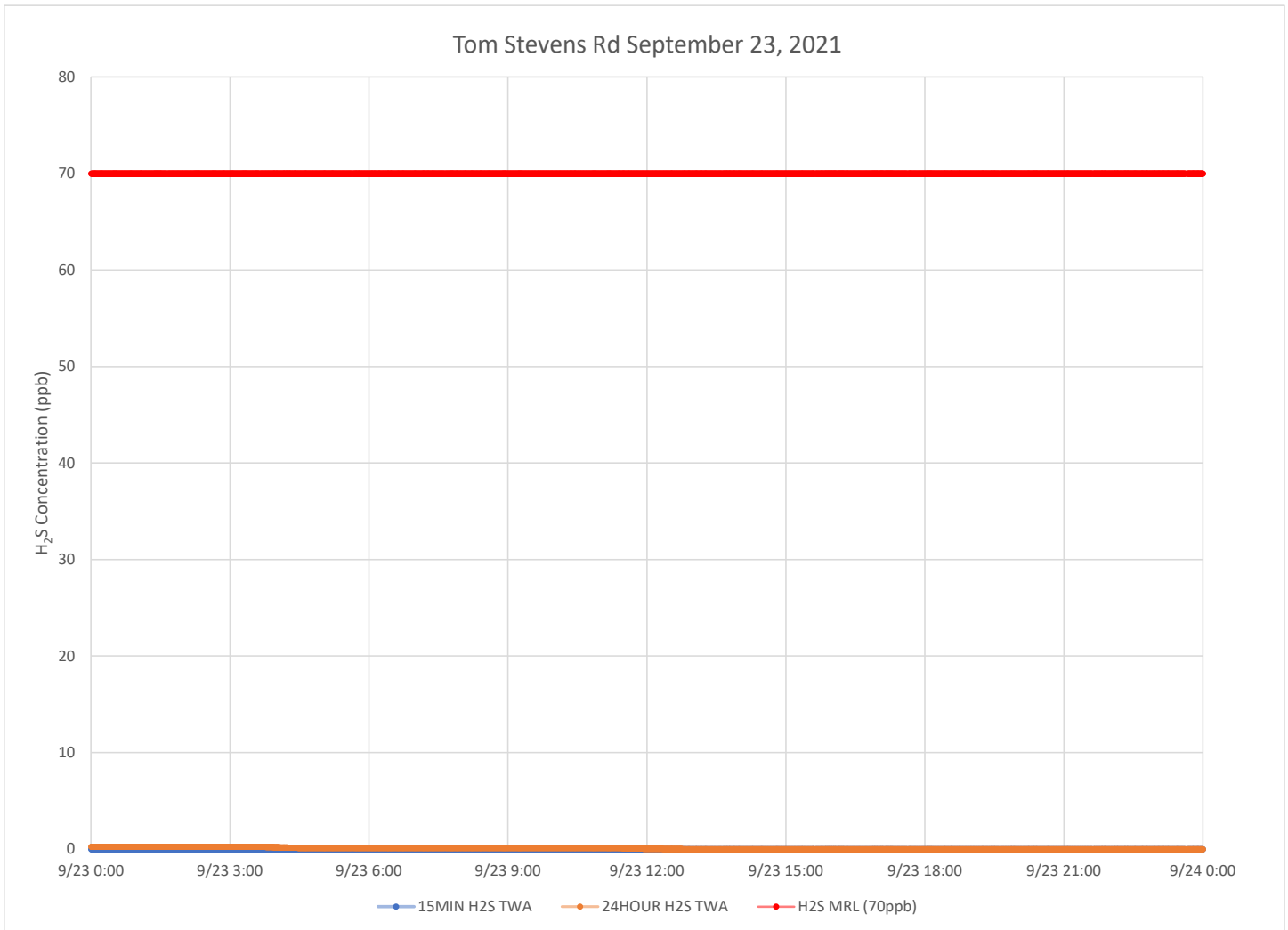
- ATSDR MRL Agency for Toxic Substances and Disease Registry Minimal Risk Level - Acute Exposure (<14 days)
- H<sub>2</sub>S Hydrogen Sulfide
- hr Hour
- ppb Parts per billion
- MRL Exceedance Defines if the 24-hr TWA exceeded the MRL at any time during the period of this report
- SPM Single Point Monitor
- TWA Time Weighted Average



# H<sub>2</sub>S in South Carolina

## Hydrogen Sulfide 15-min and 24-hr Time Weighted Average Graphs

Winds for this period were generally from the north northwest to northeast during the daylight hours and calm in the early morning and late evening hours.



### Notes:

Time is Eastern Daylight Time

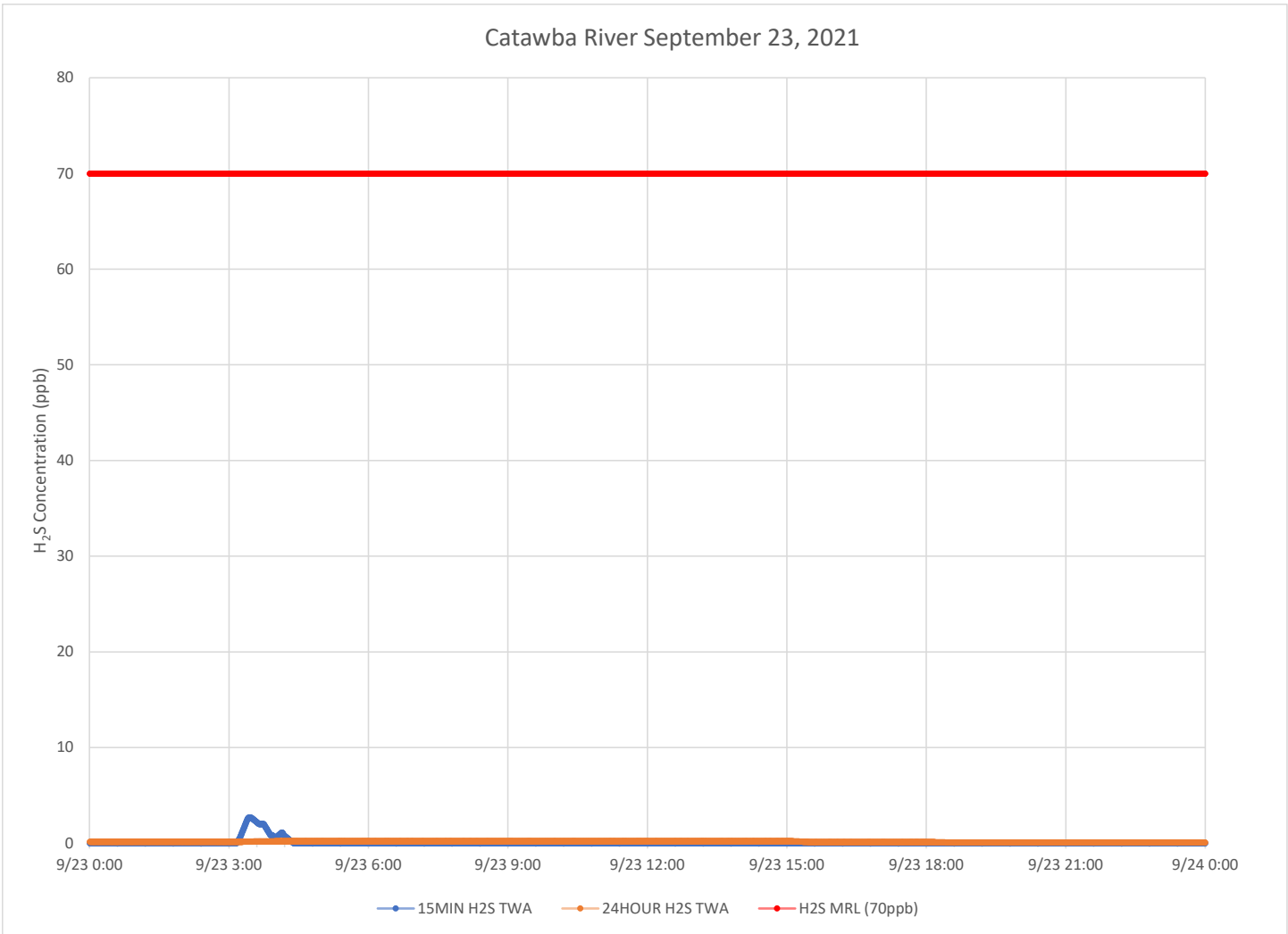
H<sub>2</sub>S – Hydrogen Sulfide

MIN – Minute

MRL – Minimal Risk Level

ppb – Parts per billion

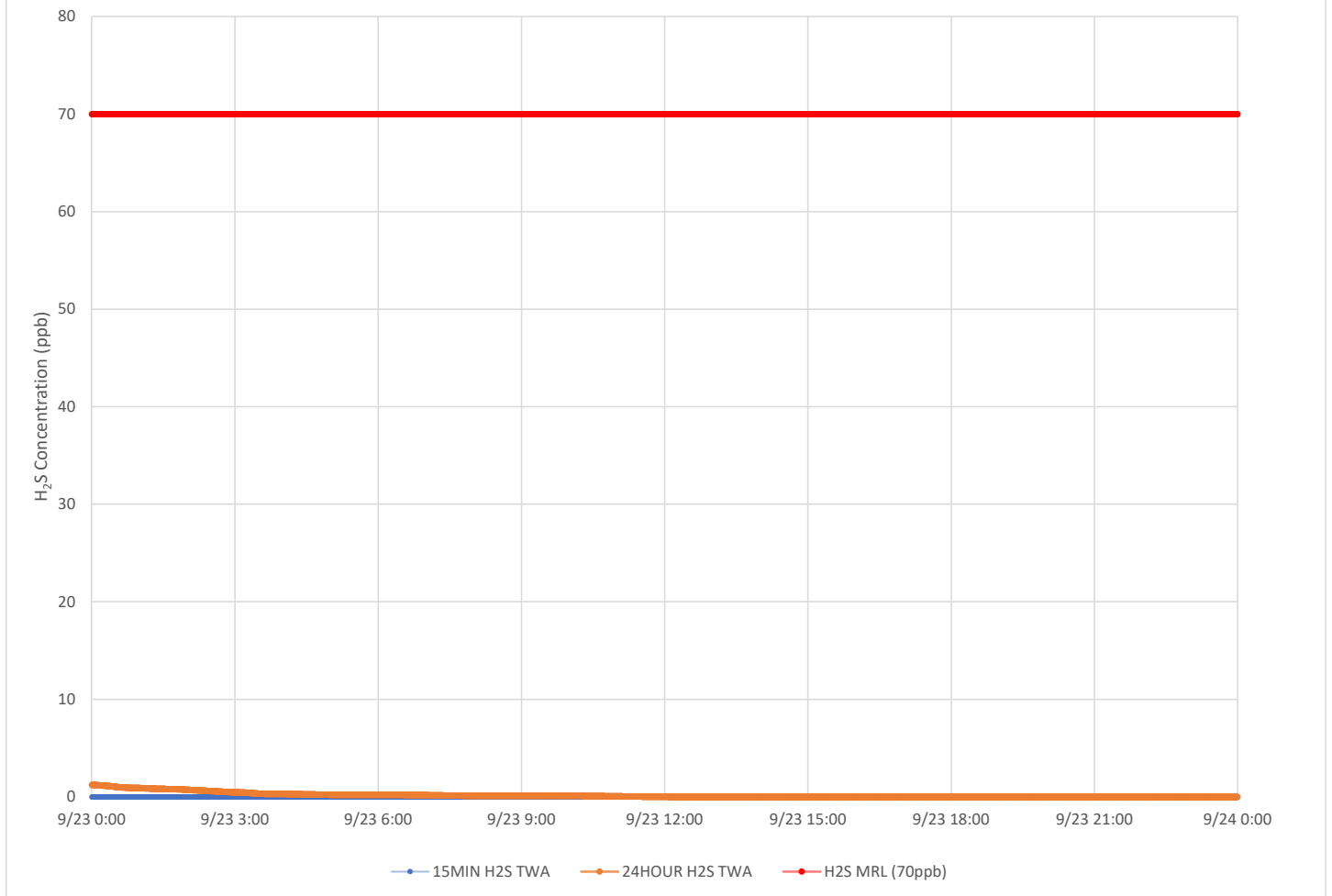
### Catawba River September 23, 2021



**Notes:**

- Time is Eastern Daylight Time
- H<sub>2</sub>S – Hydrogen Sulfide
- MIN – Minute
- MRL – Minimal Risk Level
- ppb – Parts per billion

### Catawba Express September 23, 2021



**Notes:**

Time is Eastern Daylight Time

H<sub>2</sub>S – Hydrogen Sulfide

MIN – Minute

MRL – Minimal Risk Level

ppb – Parts per billion