

Table corrected to indicate the 24 hour Time Weighted Average MRL was not exceeded during this period

Air Monitoring Summary Tables

This table summarizes monitoring data collected using DHEC monitors and EPA's Viper wireless remote monitoring system.

Project Name: H₂S in South Carolina



From: 8/31/21
12:00 AM

To: 8/31/21
11:59 PM

Tom Stevens Rd							
Instrument	Analyte	ATSDR MRL Exceedance?	Number of Readings	Number of Detections	Concentration Range	Period Average	ATSDR MRL
SPM Flex 1	H2S	No	3005	1778	0 - 55 ppb	9.09 ppb	70 ppb

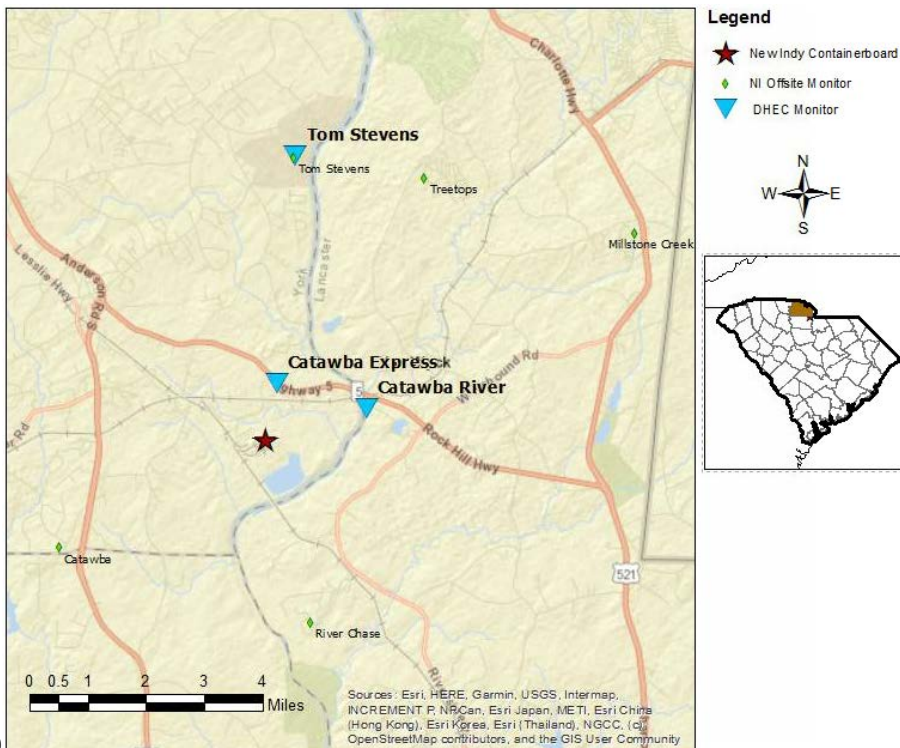
Catawba River							
Instrument	Analyte	ATSDR MRL Exceedance?	Number of Readings	Number of Detections	Concentration Range	Period Average	ATSDR MRL
SPM Flex 2	H2S	No	3013	297	0 - 88 ppb	3.06 ppb	70 ppb

Catawba Express							
Instrument	Analyte	ATSDR MRL Exceedance?	Number of Readings	Number of Detections	Concentration Range	Period Average	ATSDR MRL
SPM Flex 3	H2S	No	2999	2460	0 - 110 ppb	20.87 ppb	70 ppb

Notes:

Hydrogen sulfide concentrations presented in this data summary table are converted from parts per million, the instrument readout units, to parts per billion.

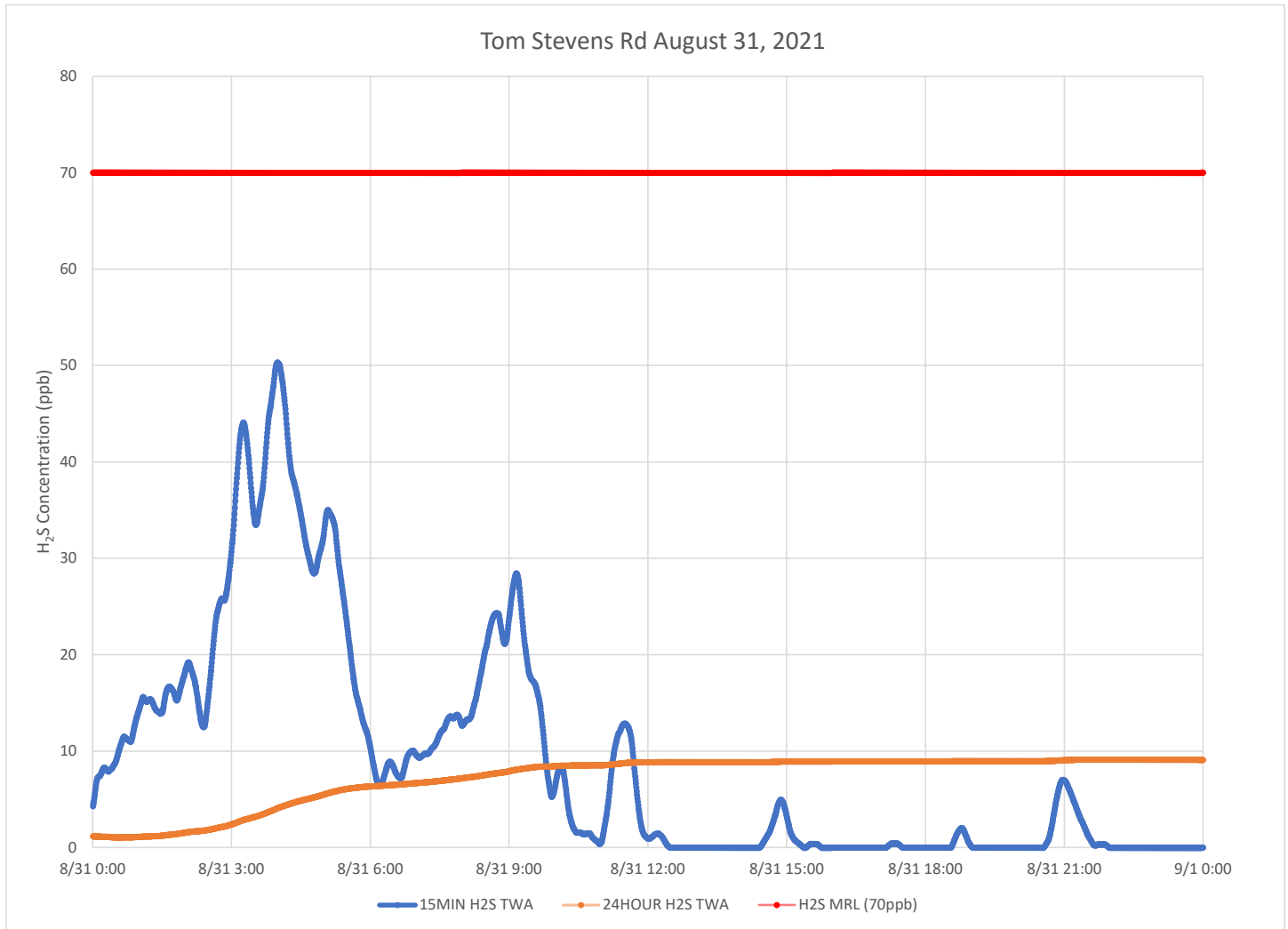
- ATSDR MRL Agency for Toxic Substances and Disease Registry Minimal Risk Level - Acute Exposure (<14 days)
- H₂S Hydrogen Sulfide
- hr Hour
- ppb Parts per billion
- MRL Exceedance Defines if the 24-hr TWA exceeded the MRL at any time during the period of this report
- SPM Single Point Monitor
- TWA Time Weighted Average



H₂S in South Carolina

Hydrogen Sulfide 15-min and 24-hr Time Weighted Graphs

Winds for this period were predominantly from the south to south southwest.



Notes:

Time is Eastern Daylight Time

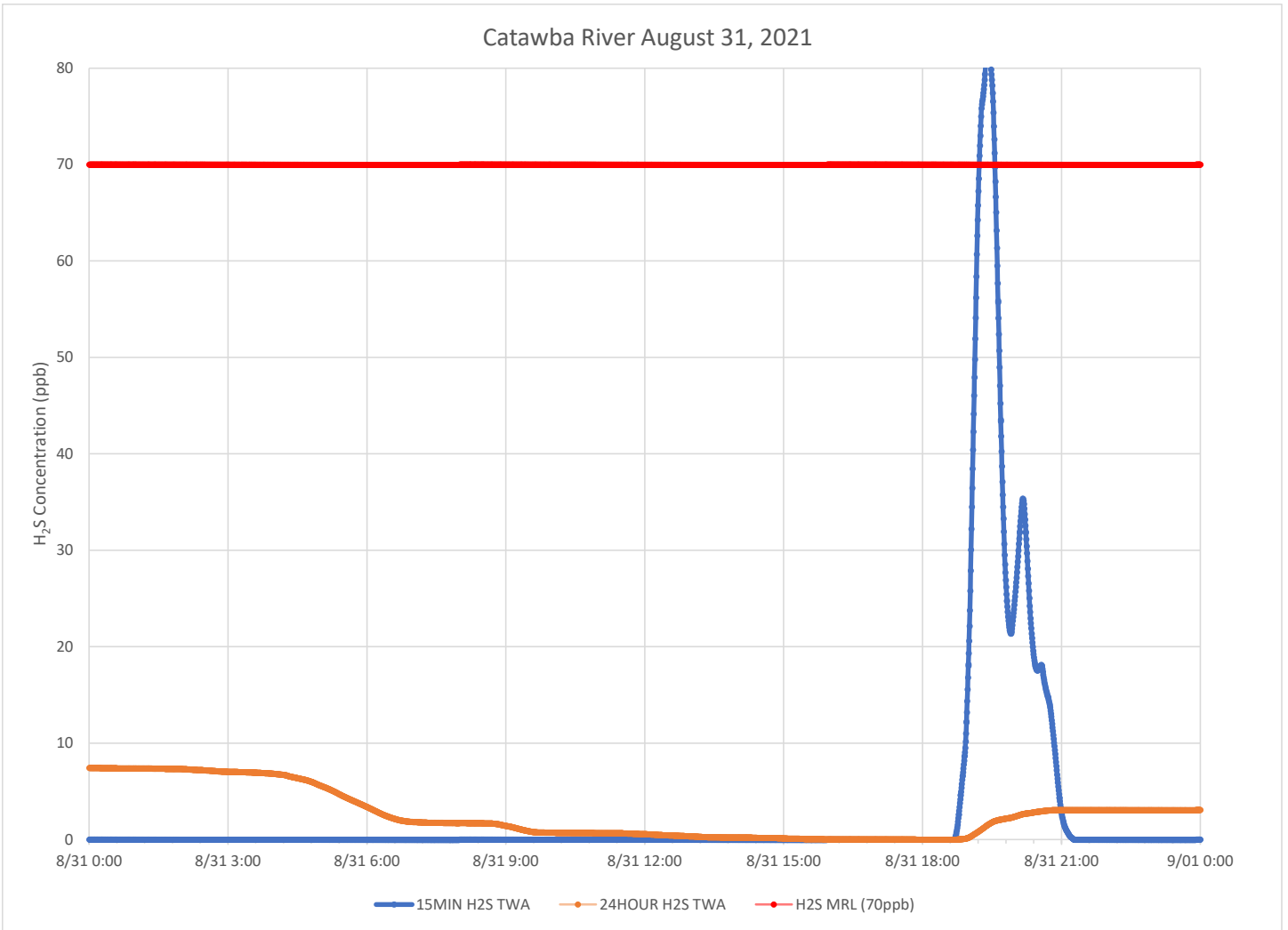
H₂S – Hydrogen Sulfide

MIN – Minute

MRL – Minimal Risk Level

ppb – Parts per billion

Catawba River August 31, 2021



Notes:

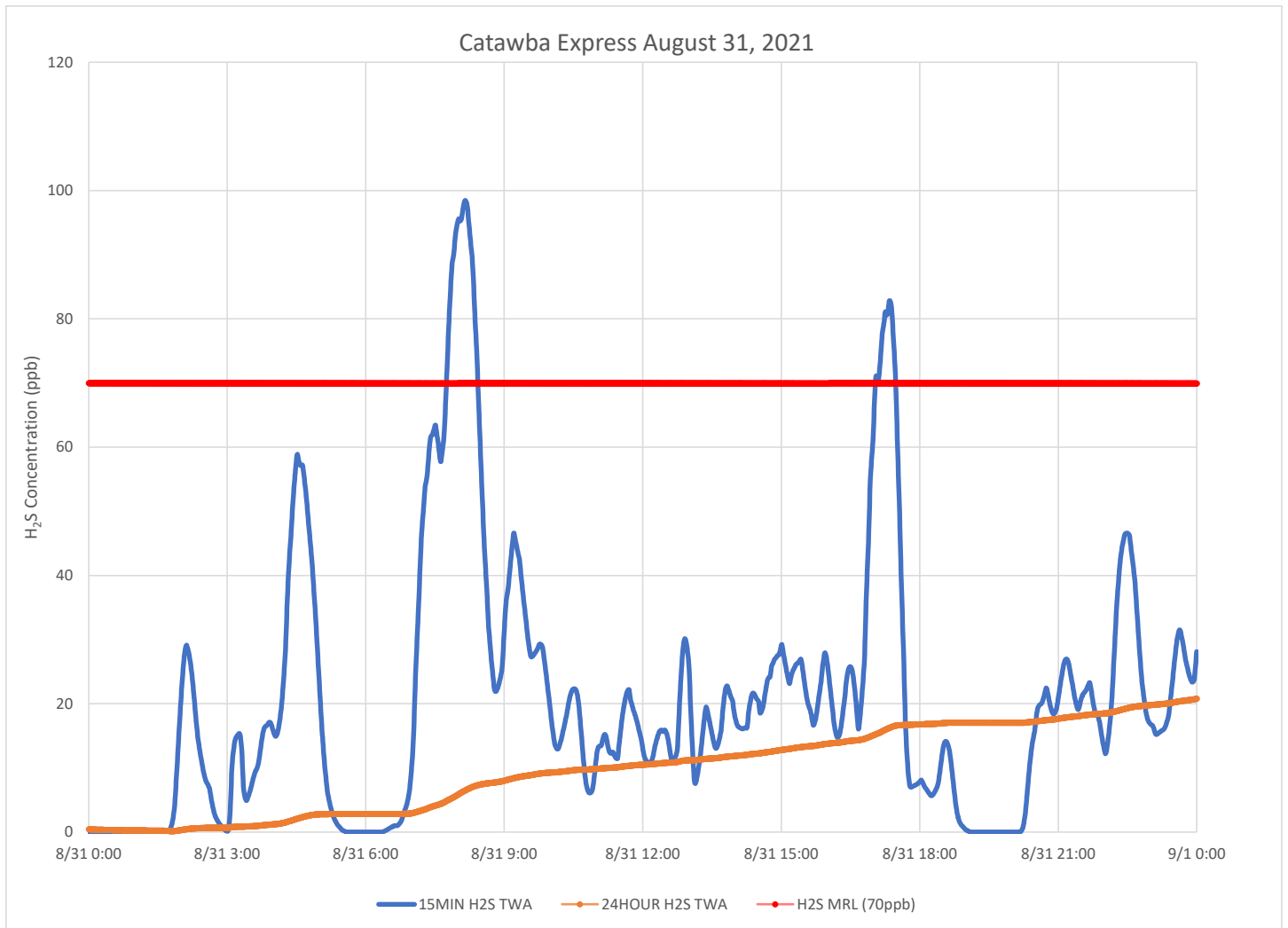
Time is Eastern Daylight Time

H₂S – Hydrogen Sulfide

MIN – Minute

MRL – Minimal Risk Level

ppb – Parts per billion



Notes:

Time is Eastern Daylight Time
H₂S – Hydrogen Sulfide
MIN – Minute
MRL – Minimal Risk Level
ppb – Parts per billion