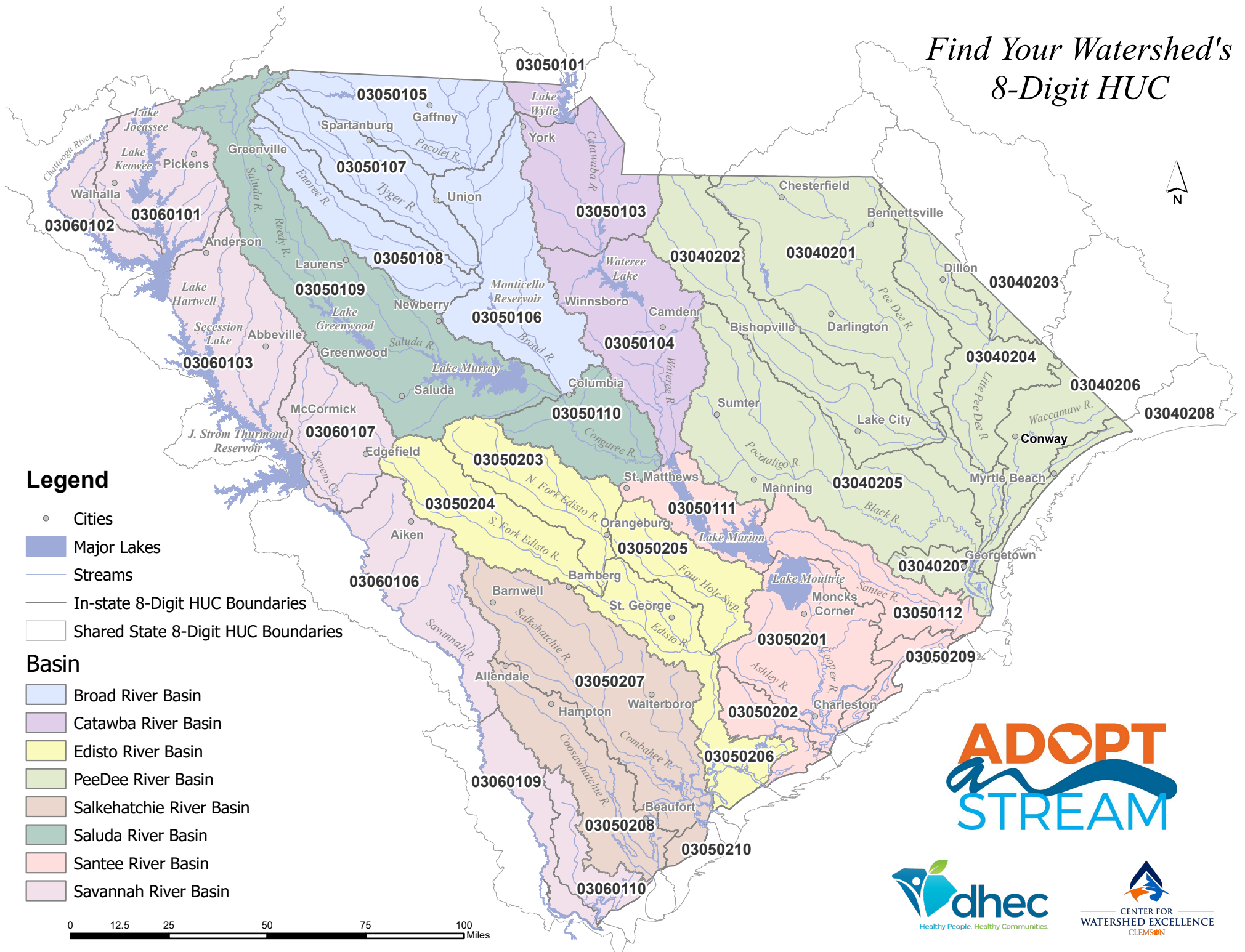


# Find Your Watershed's 8-Digit HUC



## Legend

- Cities
- Major Lakes
- Streams
- In-state 8-Digit HUC Boundaries
- Shared State 8-Digit HUC Boundaries

## Basin

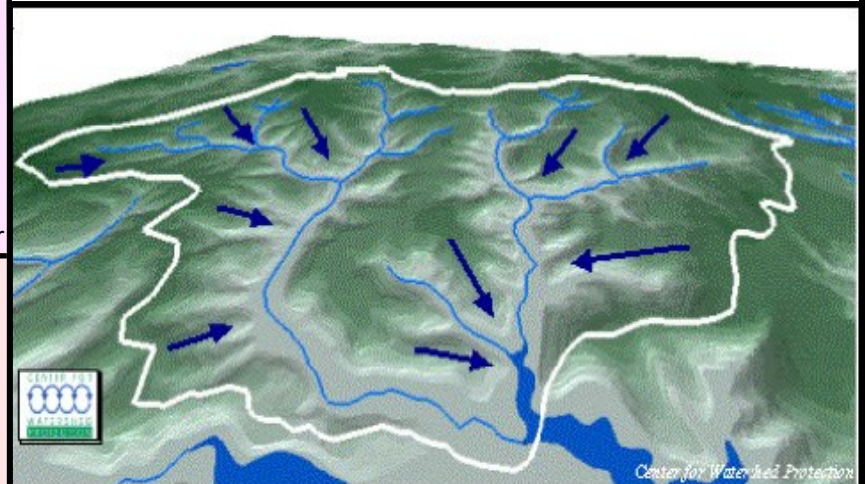
- Broad River Basin
- Catawba River Basin
- Edisto River Basin
- PeeDee River Basin
- Salkehatchie River Basin
- Saluda River Basin
- Santee River Basin
- Savannah River Basin

0 12.5 25 50 75 100 Miles



Watershed Names	Pee Dee River Basin
<b>Edisto River Basin</b> 03050203 - North Fork Edisto 03050204 - South Fork Edisto 03050205 - Four Hole Swamp 03050206 - Edisto River	03040202 - Lynches 03040201 - Lower Pee Dee 03040204 - Little Pee Dee 03040203 - Lumber River 03040206 - Waccamaw River 03040208 - Coastal Carolina 03040205 - Black 03040207 - Carolina Coastal-Sampit
<b>Salkehatchie River Basin</b> 03050207 - Salkehatchie 03050208 - Broad-St. Helena 03050210 - St. Helena Island	<b>Savannah River Basin</b> 03060101 - Seneca 03060102 - Tugaloo 03060103 - Upper Savannah 03060107 - Stevens 03060106 - Middle Savannah 03060109 - Lower Savannah 03060110 - Calibogue Sound-Wright River
<b>Catawba River Basin</b> 03050101 - Upper Catawba 03050103 - Lower Catawba 03050104 - Wateree	<b>Santee River Basin</b> 03050111 - Lake Marion 03050112 - Santee 03050209 - Bulls Bay 03050201 - Cooper 03050202 - South Carolina Coastal
<b>Saluda River Basin</b> 03050109 - Saluda 03050110 - Congaree	
<b>Broad River Basin</b> 03050105 - Upper Broad 03050107 - Tyger 03050108 - Enoree 03050106 - Lower Broad	

*What is a Watershed?*  
An area of land and water that drains to a central point.



## Watershed Facts:

- Watersheds can be as small as your back yard or span the entire states.
- The terms “Watersheds” and “River Basins” can be used interchangeably.
- Larger watershed contain smaller ones called “sub-watersheds.”
- Everything in a watershed affects water quality.
- Watersheds don’t follow city/state boundaries.
- Each watershed has a unique number called a Hydrologic Unit Code or “HUC.”
- The SC Adopt-a-Stream database uses “8-Digit HUCs” to identify watersheds.

[www.scadoptastream.org](http://www.scadoptastream.org)