



Infant Mortality and Selected Birth Characteristics



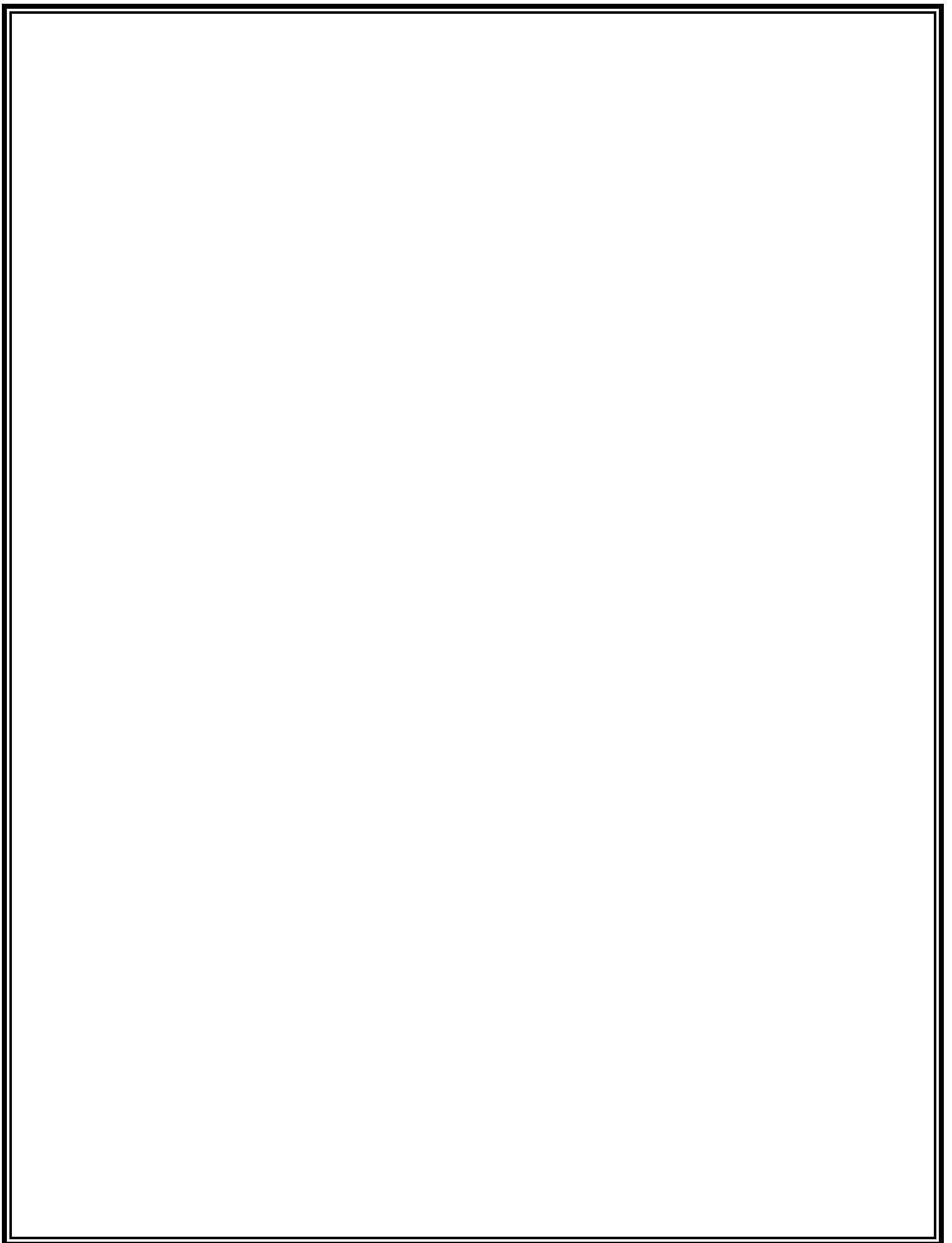
2009 South Carolina Residence Data

July 2011

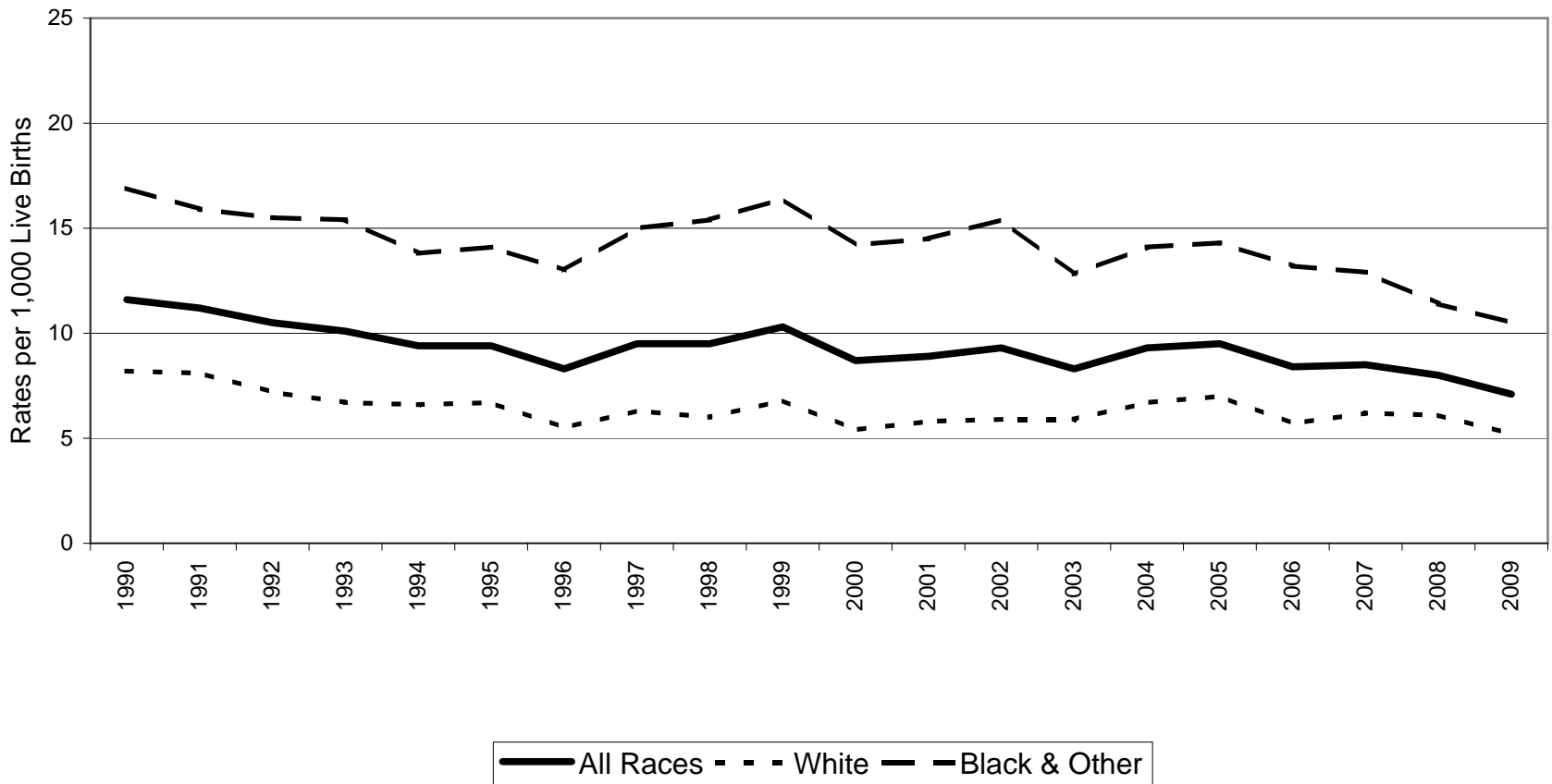
**South Carolina Department of Health and Environmental Control
Office of Public Health Statistics and Information Services
Division of Biostatistics
2600 Bull Street
Columbia, SC 29201**

**Phone: (803)898-3649
Fax: (803)898-3661**





South Carolina Infant Mortality Rates¹ by Race² Residence Data, 1990-2009



	1990	1991	1992	1993	1994	1995	1996	1997	1998	1999	2000	2001	2002	2003	2004	2005	2006	2007	2008	2009
All Races	11.6	11.2	10.5	10.1	9.4	9.4	8.3	9.5	9.5	10.3	8.7	8.9	9.3	8.3	9.3	9.5	8.4	8.5	8.0	7.1
White	8.2	8.1	7.2	6.7	6.6	6.7	5.5	6.3	6.0	6.8	5.4	5.8	5.9	5.9	6.7	7.0	5.7	6.2	6.1	5.2
Black & Other	16.9	15.9	15.5	15.4	13.8	14.1	13.0	15.0	15.4	16.4	14.2	14.5	15.4	12.8	14.1	14.3	13.2	12.9	11.4	10.5

¹Rates per 1,000 live births

²Race of mother

Source: SC DHEC: PHSIS-Division of Biostatistics

Table 1.
 Infant Mortality Rates¹ with 95% Confidence Intervals²
 South Carolina, 1990-2009
 (Residence Data)

Year	Number of Live Births	Number of Infant Deaths	Infant Mortality Rate	95% Confidence Intervals
1990	58,461	679	11.6	(10.7, 12.5)
1991	57,517	644	11.2	(10.3, 12.1)
1992	56,102	588	10.5	(9.7, 11.3)
1993	53,715	544	10.1	(9.3, 11.0)
1994	51,907	486	9.4	(8.5, 10.2)
1995	50,913	480	9.4	(8.6, 10.2)
1996	51,105	424	8.3	(7.5, 9.1)
1997	52,205	494	9.5	(8.7, 10.3)
1998	53,833	511	9.5	(8.7, 10.3)
1999	54,706	564	10.3	(9.4, 11.2)
2000	55,964	488	8.7	(7.9, 9.5)
2001	55,748	496	8.9	(8.1, 9.7)
2002	54,453	507	9.3	(8.5, 10.1)
2003	55,461	463	8.3	(7.5, 9.1)
2004	56,543	524	9.3	(8.5, 10.1)
2005	57,538	549	9.5	(8.7, 10.3)
2006	62,191	520	8.4	(7.6, 9.1)
2007	62,933	538	8.5	(7.8, 9.3)
2008	63,077	504	8.0	(7.3, 8.7)
2009	60,682	430	7.1	(6.4, 7.8)

Table 2.
 Infant Mortality Rates¹ with 95% Confidence Intervals²
 South Carolina
 1990-1994, 1995-1999, 2000-2004, 2005-2009
 (Residence Data)

Years	Number of Live Births	Number of Infant Deaths	Infant Mortality Rate	95% Confidence Intervals
1990-1994	277,702	2,941	10.6	(10.2, 11.0)
1995-1999	262,762	2,473	9.4	(9.0, 9.8)
2000-2004	278,169	2,478	8.9	(8.6, 9.3)
2005-2009	306,421	2,541	8.3	(8.0, 8.6)

¹Rates per 1,000 live births

² $r \pm 61.981 (r/n)^{1/2}$, where r = infant mortality rate and n = number of live births

Table 3.

Infant, Neonatal and Postneonatal Mortality and Mortality Rates¹ by Race²
 South Carolina
 2005, 2006, 2007, 2008 and 2009
 (Residence Data)

Infant Mortality									
	Total			White			Black & Other		
Year	Number of Live Birth	Number of Infant Death	Rate	Number of Live Birth	Number of Infant Death	Rate	Number of Live Birth	Number of Infant Death	Rate
2005	57,538*	549	9.5	37,367	262	7.0	20,080	287	14.3
2006	62,191*	520	8.4	39,950	227	5.7	22,127	293	13.2
2007	62,933*	538	8.5	40,641	250	6.2	22,259	288	12.9
2008	63,077*	504*	8.0	40,713	248	6.1	22,321	255	11.4
2009	60,682*	430	7.1	39,348	206	5.2	21,284	224	10.5

Neonatal Mortality (<28 days)									
	Total			White			Black & Other		
Year	Number of Live Birth	Number of Infant Death	Rate	Number of Live Birth	Number of Infant Death	Rate	Number of Live Birth	Number of Infant Death	Rate
2005	57,538*	341	5.9	37,367	157	4.2	20,080	184	9.2
2006	62,191*	342	5.5	39,950	138	3.5	22,127	204	9.2
2007	62,933*	357	5.7	40,641	165	4.1	22,259	192	8.6
2008	63,077*	311*	4.9	40,713	145	3.6	22,321	164	7.3
2009	60,682*	260	4.3	39,348	121	3.1	21,284	139	6.5

Postneonatal Mortality (28-364 days)									
	Total			White			Black & Other		
Year	Number of Live Birth	Number of Infant Death	Rate	Number of Live Birth	Number of Infant Death	Rate	Number of Live Birth	Number of Infant Death	Rate
2005	57,538*	208	3.6	37,367	105	2.8	20,080	103	5.1
2006	62,191*	178	2.9	39,950	89	2.2	22,127	89	4.0
2007	62,933*	181	2.9	40,641	85	2.1	22,259	96	4.3
2008	63,077*	194	3.1	40,713	103	2.5	22,321	91	4.1
2009	60,682*	170	2.8	39,348	85	2.2	21,284	85	4.0

¹Rates per 1,000 live births

²Race of mother

*Includes unknown race

Table 4.
Infant Mortality and Infant Mortality Rates¹
South Carolina and Each County, 2009, 2007-2009, 2004-2006
(Residence Data)

County of Residence	2009		2007-2009		2004-2006	
	Number	Rate	Number	Rate	Number	Rate
South Carolina	430	7.1	1,472	7.9	1,593	9.0
Abbeville	3	11.0	13	15.5	15	16.6
Aiken	11	5.6	43	7.2	66	11.3
Allendale	1	9.2	9	22.5	7	16.1
Anderson	17	7.3	53	7.4	56	8.1
Bamberg	-	0	2	3.6	4	6.7
Barnwell	1	3.5	5	5.2	11	11.4
Beaufort	7	3.2	35	5.1	45	6.7
Berkeley	10	3.9	59	7.6	56	8.2
Calhoun	1	6.2	5	9.7	3	6.0
Charleston	27	5.4	132	8.6	172	11.7
Cherokee	5	7.1	20	9.3	32	16.1
Chester	4	9.5	11	8.1	15	11.3
Chesterfield	13	23.9	23	13.2	20	12.0
Clarendon	-	0	7	5.7	7	5.7
Colleton	7	13.5	14	8.5	17	10.4
Darlington	10	12.2	26	10.3	29	11.1
Dillon	1	2.2	6	4.0	8	5.7
Dorchester	7	3.8	29	5.1	27	5.6
Edgefield	2	8	5	6.7	4	5.4
Fairfield	1	4.0	5	6.3	10	11.1
Florence	22	11.6	65	11.1	73	12.7
Georgetown	7	10.2	21	9.8	30	14.1
Greenville	47	7.3	139	7.0	122	6.8
Greenwood	13	13.7	31	10.5	43	15.8
Hampton	1	3.4	7	8.0	11	12.8
Horry	28	8.9	92	9.3	79	8.7
Jasper	2	5.3	10	8.3	10	9.4
Kershaw	2	2.6	14	5.7	14	6.1
Lancaster	5	5.5	17	6.0	23	9.2
Laurens	4	4.6	27	10.3	34	13.5
Lee	2	8	4	5.7	10	13.0
Lexington	20	5.7	68	6.6	56	5.8
McCormick	1	13	3	11.2	5	20.3
Marion	9	18.8	27	18.4	15	10.5
Marlboro	4	12.3	9	8.3	13	11.9
Newberry	2	3.8	10	6.3	6	3.8
Oconee	4	4.8	20	8.1	12	4.8
Orangeburg	7	5.2	57	13.8	55	13.7
Pickens	6	5.1	18	4.6	22	5.6
Richland	30	6.0	88	5.8	123	8.5
Saluda	4	15.4	10	12.3	4	5.0
Spartanburg	38	9.6	96	8.2	105	9.7
Sumter	14	8.8	37	7.4	45	9.0
Union	4	11.1	11	10.5	8	8.0
Williamsburg	5	12.4	22	16.2	17	12.1
York	21	7.0	67	7.3	54	6.7

¹Rates per 1,000 live births. Rates calculated with 20 or fewer deaths are unreliable and should be used cautiously.

Table 4-A.
White¹ Infant Mortality and Infant Mortality Rates²
South Carolina and Each County, 2009, 2007-2009, 2004-2006
(Residence Data)

County of Residence	2009		2007-2009		2004-2006	
	Number	Rate	Number	Rate	Number	Rate
South Carolina	206	5.2	704	5.8	736	6.4
Abbeville	1	5.6	3	5.5	5	8.3
Aiken	3	2.3	19	4.7	39	9.8
Allendale	-	0	-	0	2	24.4
Anderson	9	4.9	30	5.3	29	5.2
Bamberg	-	0.0	1	5.7	2	11.8
Barnwell	1	7.2	2	4.7	1	2.3
Beaufort	3	1.9	15	3.0	24	4.9
Berkeley	7	3.8	35	6.3	27	5.6
Calhoun	1	12.2	3	11.5	-	0
Charleston	12	3.9	53	5.7	73	8.2
Cherokee	4	7.8	12	7.7	19	13.0
Chester	3	12.8	7	10.0	5	7.1
Chesterfield	7	21.9	11	10.7	12	12.3
Clarendon	-	0	2	3.8	2	4.1
Colleton	2	7.3	4	4.6	7	8.3
Darlington	4	9.4	10	8.0	10	7.5
Dillon	1	5.3	3	4.8	2	3.1
Dorchester	5	4.0	16	4.1	13	3.9
Edgefield	-	0	-	0	3	7.5
Fairfield	1	12.8	2	8.6	1	3.6
Florence	4	4.5	18	6.5	20	7.0
Georgetown	1	2.7	6	5.2	13	10.7
Greenville	18	3.6	71	4.7	65	4.7
Greenwood	6	10.1	16	8.6	17	9.8
Hampton	-	0	1	2.9	2	5.9
Horry	19	7.6	69	8.8	53	7.6
Jasper	1	4.7	5	7.1	4	6.6
Kershaw	1	1.9	10	5.8	7	4.2
Lancaster	2	3.2	4	2.0	12	7.2
Laurens	4	6.7	21	11.6	14	8.0
Lee	-	0	-	0	2	10.8
Lexington	13	4.6	47	5.6	33	4.3
McCormick	-	0	1	12.3	1	12
Marion	1	6.7	5	10.2	4	8.2
Marlboro	3	27.5	3	7.3	8	20.1
Newberry	2	5.9	7	6.8	4	3.9
Oconee	4	5.3	19	8.5	12	5.2
Orangeburg	1	2.5	12	9.8	13	10.7
Pickens	6	5.6	18	5.1	17	4.7
Richland	7	3.2	17	2.6	38	6.1
Saluda	2	10.7	7	11.9	3	5.1
Spartanburg	24	8.5	57	6.7	63	7.9
Sumter	8	10.5	11	4.7	17	7.0
Union	2	8.5	7	10.5	7	10.7
Williamsburg	-	0	1	2.8	3	7.8
York	13	5.8	43	6.3	28	4.6

¹Race of mother

²Rates per 1,000 live births. Rates calculated with 20 or fewer deaths are unreliable and should be used cautiously.

Table 4-B.
Black and Other¹ Infant Mortality and Infant Mortality Rates²
South Carolina and Each County, 2009, 2007-2009, 2004-2006
(Residence Data)

County of Residence	2009		2007-2009		2004-2006	
	Number	Rate	Number	Rate	Number	Rate
South Carolina	224	10.5	767	11.6	857	13.9
Abbeville	2	21.7	10	34.2	10	33.7
Aiken	8	12.1	24	12.4	27	14.7
Allendale	1	11.6	9	27.4	5	14.2
Anderson	8	16.6	23	15.3	27	19.6
Bamberg	-	0	1	2.7	2	4.7
Barnwell	-	0	3	5.7	10	18.6
Beaufort	4	6.5	20	10.5	21	11.6
Berkeley	3	4.2	24	10.8	29	14.3
Calhoun	-	0	2	8.0	3	11.8
Charleston	15	7.6	79	12.9	99	17.2
Cherokee	1	5.2	8	13.5	13	25.0
Chester	1	5.3	4	6.1	10	16.0
Chesterfield	6	26.5	12	16.9	8	11.5
Clarendon	-	0	5	7.2	5	6.9
Colleton	5	20.5	10	13.0	10	12.6
Darlington	6	15.3	16	12.6	19	14.7
Dillon	-	0	3	3.5	6	7.9
Dorchester	2	3.3	13	7.6	14	9.7
Edgefield	2	16.4	5	14.5	1	2.9
Fairfield	-	0	3	5.4	9	14.3
Florence	18	18.0	47	15.1	53	18.6
Georgetown	6	19.0	15	15.4	17	18.5
Greenville	29	19.6	68	14.5	57	13.8
Greenwood	7	19.7	15	13.6	26	26.2
Hampton	1	6.1	6	11.2	9	17.3
Horry	9	14.4	23	11.5	26	12.8
Jasper	1	6.2	5	10.0	6	13.3
Kershaw	1	4	4	5.4	7	10.7
Lancaster	3	10.8	13	15.0	11	13.2
Laurens	-	0	6	7.4	20	25.9
Lee	2	11.0	4	7.5	8	13.7
Lexington	7	10.0	21	10.6	23	12.1
McCormick	1	18	2	10.6	4	24.5
Marion	8	24.3	22	22.4	11	11.6
Marlboro	1	4.6	6	9.0	5	7.2
Newberry	-	0	3	5.4	2	3.6
Oconee	-	0	1	4.4	-	0
Orangeburg	6	6.4	44	15.1	42	15.0
Pickens	-	0	-	0	5	15.5
Richland	23	8.2	71	8.1	85	10.4
Saluda	2	27.8	3	13.4	1	4.8
Spartanburg	14	12.7	39	12.2	42	15.1
Sumter	6	7.2	26	9.9	28	11.0
Union	2	16.0	4	10.5	1	2.9
Williamsburg	5	15.8	21	21.2	14	13.7
York	8	10.5	24	10.3	26	13.3

¹Race of mother

²Rates per 1,000 live births. Rates calculated with 20 or fewer deaths are unreliable and should be used cautiously.

Table 5.

Infant, Neonatal and Postneonatal Mortality Rates¹ by Race²
 and Percent Changes from 2008 to 2009
 South Carolina
 (Residence Data)

Infant Mortality			
Year	Total	White	Black & Other
2008	8.0	6.1	11.4
2009	7.1	5.2	10.5
Percent Change	-11.3%	-14.8%	-7.9%

Neonatal Mortality			
Year	Total	White	Black & Other
2008	4.9	3.6	7.3
2009	4.3	3.1	6.5
Percent Change	-12.2%	-13.9%	-11.0%

Postneonatal Mortality			
Year	Total	White	Black & Other
2008	3.1	2.5	4.1
2009	2.8	2.2	4.0
Percent Change	-9.7%	-12.0%	-2.4%

¹Rates per 1,000 live births

²Race of mother

Table 6.
Neonatal Mortality and Neonatal Mortality Rates¹
South Carolina and Each County, 2009, 2007-2009, 2004-2006
(Residence Data)

County of Residence	2009		2007-2009		2004-2006	
	Number	Rate	Number	Rate	Number	Rate
South Carolina	260	4.3	927	5.0	1,046	5.9
Abbeville	1	3.7	7	8.3	12	13.3
Aiken	5	2.6	28	4.7	44	7.5
Allendale	-	0	3	7.5	5	11.5
Anderson	13	5.6	32	4.5	42	6.1
Bamberg	-	0	1	1.8	3	5.0
Barnwell	1	3.5	4	4.2	9	9.3
Beaufort	5	2.3	25	3.6	35	5.2
Berkeley	6	2.3	35	4.5	39	5.7
Calhoun	-	0	4	7.8	3	6.0
Charleston	12	2.4	87	5.6	129	8.8
Cherokee	2	2.8	10	4.6	16	8.0
Chester	2	4.7	6	4.4	12	9.1
Chesterfield	10	18.3	17	9.8	18	10.8
Clarendon	-	0	5	4.1	4	3.3
Colleton	3	5.8	7	4.2	10	6.1
Darlington	4	4.9	16	6.3	16	6.1
Dillon	-	0	3	2.0	3	2.1
Dorchester	3	1.6	21	3.7	20	4.2
Edgefield	2	8.0	5	6.7	2	2.7
Fairfield	1	4.0	4	5.1	7	7.8
Florence	11	5.8	40	6.8	50	8.7
Georgetown	4	5.8	14	6.5	18	8.4
Greenville	29	4.5	99	5.0	74	4.1
Greenwood	9	9.5	21	7.1	32	11.7
Hampton	1	3.4	6	6.8	8	9.3
Horry	21	6.7	67	6.8	50	5.5
Jasper	2	5.3	7	5.8	5	4.7
Kershaw	1	1.3	9	3.6	8	3.5
Lancaster	4	4.4	11	3.9	12	4.8
Laurens	1	1.2	15	5.7	22	8.7
Lee	1	4.2	3	4.2	6	7.8
Lexington	9	2.6	35	3.4	33	3.4
McCormick	1	12.8	2	7.4	5	20.3
Marion	7	14.6	19	12.9	7	4.9
Marlboro	4	12.3	6	5.6	8	7.3
Newberry	1	1.9	4	2.5	4	2.5
Oconee	2	2.4	14	5.7	8	3.2
Orangeburg	5	3.7	39	9.4	37	9.2
Pickens	5	4.3	13	3.3	11	2.8
Richland	18	3.6	48	3.1	74	5.1
Saluda	2	7.7	4	4.9	3	3.8
Spartanburg	25	6.3	60	5.1	60	5.6
Sumter	9	5.6	18	3.6	26	5.2
Union	1	2.8	5	4.8	5	5.0
Williamsburg	4	9.9	14	10.3	10	7.1
York	13	4.3	34	3.7	41	5.1

¹Rates per 1,000 live births. Rates calculated with 20 or fewer deaths are unreliable and should be used cautiously.

Table 6-A.
White¹ Neonatal Mortality and Neonatal Mortality Rates²
South Carolina and Each County, 2009, 2007-2009, 2004-2006
(Residence Data)

County of Residence	2009		2007-2009		2004-2006	
	Number	Rate	Number	Rate	Number	Rate
South Carolina	121	3.1	431	3.6	464	4.1
Abbeville	-	0	1	1.8	3	5.0
Aiken	1	0.8	12	3.0	25	6.3
Allendale	-	0	-	0	2	24.4
Anderson	6	3.3	16	2.8	21	3.8
Bamberg	-	0	-	0	1	5.9
Barnwell	1	7.2	2	4.7	1	2.3
Beaufort	2	1.3	11	2.2	17	3.5
Berkeley	4	2.2	19	3.4	19	3.9
Calhoun	-	0	2	7.6	-	0
Charleston	4	1.3	34	3.7	49	5.5
Cherokee	1	1.9	4	2.6	10	6.8
Chester	1	4.3	3	4.3	5	7.1
Chesterfield	5	15.7	7	6.8	10	10.3
Clarendon	-	0	1	1.9	1	2.0
Colleton	1	3.6	3	3.4	4	4.7
Darlington	1	2.4	5	4.0	5	3.8
Dillon	-	0	2	3.2	1	1.5
Dorchester	2	1.6	11	2.8	8	2.4
Edgefield	-	0	-	0	1	2.5
Fairfield	1	12.8	2	8.6	1	3.6
Florence	1	1.1	9	3.2	14	4.9
Georgetown	1	2.7	4	3.4	8	6.6
Greenville	12	2.4	51	3.4	37	2.7
Greenwood	4	6.8	10	5.4	12	6.9
Hampton	-	0	-	0	1	2.9
Horry	14	5.6	51	6.5	34	4.8
Jasper	1	4.7	4	5.7	1	1.7
Kershaw	-	0	5	2.9	6	3.6
Lancaster	2	3.2	3	1.5	5	3.0
Laurens	1	1.7	12	6.6	8	4.6
Lee	-	0	-	0	1	5.4
Lexington	6	2.1	25	3.0	21	2.7
McCormick	-	0	-	0	1	12
Marion	-	0	2	4.1	2	4.1
Marlboro	3	27.5	3	7.3	5	12.6
Newberry	1	3.0	4	3.9	2	2.0
Oconee	2	2.6	14	6.2	8	3.5
Orangeburg	1	2.5	7	5.7	9	7.4
Pickens	5	4.6	13	3.7	9	2.5
Richland	5	2.3	11	1.7	25	4.0
Saluda	1	5.3	3	5.1	2	3.4
Spartanburg	16	5.6	34	4.0	34	4.3
Sumter	5	6.6	6	2.6	11	4.5
Union	1	4.3	3	4.5	4	6.1
Williamsburg	-	0	-	0	2	5.2
York	9	4.0	22	3.2	18	3.0

¹Race of mother

²Rates per 1,000 live births. Rates calculated with 20 or fewer deaths are unreliable and should be used cautiously.

Table 6-B.

Black and Other¹ Neonatal Mortality and Neonatal Mortality Rates²
 South Carolina and Each County, 2009, 2007-2009, 2004-2006
 (Residence Data)

County of Residence	2009		2007-2009		2004-2006	
	Number	Rate	Number	Rate	Number	Rate
South Carolina	139	6.5	495	7.5	582	9.4
Abbeville	1	10.9	6	20.5	9	30.3
Aiken	4	6.1	16	8.3	19	10.4
Allendale	-	0	3	9.1	3	8.5
Anderson	7	14.6	16	10.7	21	15.3
Bamberg	-	0	1	2.7	2	4.7
Barnwell	-	0	2	3.8	8	14.9
Beaufort	3	4.9	14	7.3	18	10.0
Berkeley	2	2.8	16	7.2	20	9.9
Calhoun	-	0	2	8.0	3	11.8
Charleston	8	4.0	53	8.6	80	13.9
Cherokee	1	5.2	6	10.2	6	11.5
Chester	1	5.3	3	4.6	7	11.2
Chesterfield	5	22.1	10	14.1	8	11.5
Clarendon	-	0	4	5.7	3	4.2
Colleton	2	8.2	4	5.2	6	7.6
Darlington	3	7.7	11	8.7	11	8.5
Dillon	-	0	1	1.2	2	2.6
Dorchester	1	1.6	10	5.8	12	8.3
Edgefield	2	16.4	5	14.5	1	2.9
Fairfield	-	0	2	3.6	6	9.6
Florence	10	10.0	31	10.0	36	12.6
Georgetown	3	9.5	10	10.2	10	10.9
Greenville	17	11.5	48	10.2	37	9.0
Greenwood	5	14.0	11	10.0	20	20.1
Hampton	1	6.1	6	11.2	7	13.4
Horry	7	11.2	16	8.0	16	7.9
Jasper	1	6.2	3	6.0	4	8.9
Kershaw	1	4.3	4	5.4	2	3.1
Lancaster	2	7.2	8	9.2	7	8.4
Laurens	-	0	3	3.7	14	18.1
Lee	1	5.5	3	5.6	5	8.6
Lexington	3	4.3	10	5.1	12	6.3
McCormick	1	17.9	2	10.6	4	24.5
Marion	7	21.3	17	17.3	5	5.3
Marlboro	1	4.6	3	4.5	3	4.3
Newberry	-	0	-	0	2	3.6
Oconee	-	0	-	0	-	0
Orangeburg	4	4.3	31	10.6	28	10.0
Pickens	-	0	-	0	2	6.2
Richland	13	4.6	37	4.2	49	6.0
Saluda	1	13.9	1	4.5	1	4.8
Spartanburg	9	8.2	26	8.1	26	9.4
Sumter	4	4.8	12	4.6	15	5.9
Union	-	0	2	5.2	1	2.9
Williamsburg	4	12.7	14	14.1	8	7.8
York	4	5.2	12	5.1	23	11.8

¹Race of mother

²Rates per 1,000 live births. Rates calculated with 20 or fewer deaths are unreliable and should be used cautiously.

Table 7.
Postneonatal Mortality and Postneonatal Mortality Rates¹
South Carolina and Each County, 2009, 2007-2009, 2004-2006
(Residence Data)

County of Residence	2009		2007-2009		2004-2006	
	Number	Rate	Number	Rate	Number	Rate
South Carolina	170	2.8	545	2.9	547	3.1
Abbeville	2	7.4	6	7.1	3	3.3
Aiken	6	3.1	15	2.5	22	3.8
Allendale	1	9.2	6	15.0	2	4.6
Anderson	4	1.7	21	2.9	14	2.0
Bamberg	-	0	1	1.8	1	1.7
Barnwell	-	0	1	1.0	2	2.1
Beaufort	2	0.9	10	1.4	10	1.5
Berkeley	4	1.6	24	3.1	17	2.5
Calhoun	1	6.2	1	1.9	-	0
Charleston	15	3.0	45	2.9	43	2.9
Cherokee	3	4.2	10	4.6	16	8.0
Chester	2	4.7	5	3.7	3	2.3
Chesterfield	3	5.5	6	3.5	2	1.2
Clarendon	-	0	2	1.6	3	2.4
Colleton	4	7.7	7	4.2	7	4.3
Darlington	6	7.3	10	4.0	13	5.0
Dillon	1	2.2	3	2.0	5	3.6
Dorchester	4	2.2	8	1.4	7	1.5
Edgefield	-	0	-	0	2	2.7
Fairfield	-	0	1	1.3	3	3.3
Florence	11	5.8	25	4.3	23	4.0
Georgetown	3	4.4	7	3.3	12	5.6
Greenville	18	2.8	40	2.0	48	2.7
Greenwood	4	4.2	10	3.4	11	4.0
Hampton	-	0	1	1.1	3	3.5
Horry	7	2.2	25	2.5	29	3.2
Jasper	-	0	3	2.5	5	4.7
Kershaw	1	1.3	5	2.0	6	2.6
Lancaster	1	1.1	6	2.1	11	4.4
Laurens	3	3.5	12	4.6	12	4.8
Lee	1	4.2	1	1.4	4	5.2
Lexington	11	3.1	33	3.2	23	2.4
McCormick	-	0	1	3.7	-	0
Marion	2	4.2	8	5.4	8	5.6
Marlboro	-	0	3	2.8	5	4.6
Newberry	1	1.9	6	3.8	2	1.3
Oconee	2	2.4	6	2.4	4	1.6
Orangeburg	2	1.5	18	4.4	18	4.5
Pickens	1	0.9	5	1.3	11	2.8
Richland	12	2.4	40	2.6	49	3.4
Saluda	2	7.7	6	7.4	1	1.3
Spartanburg	13	3.3	36	3.1	45	4.2
Sumter	5	3.1	19	3.8	19	3.8
Union	3	8.3	6	5.7	3	3.0
Williamsburg	1	2.5	8	5.9	7	5.0
York	8	2.7	33	3.6	13	1.6

¹Rates per 1,000 live births. Rates calculated with 20 or fewer deaths are unreliable and should be used cautiously.

Table 7-A.

White¹ Postneonatal Mortality and Postneonatal Mortality Rates²
 South Carolina and Each County, 2009, 2007-2009, 2004-2006
 (Residence Data)

County of Residence	2009		2007-2009		2004-2006	
	Number	Rate	Number	Rate	Number	Rate
South Carolina	85	2.2	273	2.3	272	2.4
Abbeville	1	5.6	2	3.6	2	3.3
Aiken	2	1.6	7	1.7	14	3.5
Allendale	-	0	-	0	-	0
Anderson	3	1.6	14	2.5	8	1.4
Bamberg	-	0	1	5.7	1	5.9
Barnwell	-	0	-	0	-	0
Beaufort	1	0.6	4	0.8	7	1.4
Berkeley	3	1.6	16	2.9	8	1.7
Calhoun	1	12.2	1	3.8	-	0
Charleston	8	2.6	19	2.0	24	2.7
Cherokee	3	5.8	8	5.1	9	6.1
Chester	2	8.5	4	5.7	-	0
Chesterfield	2	6.3	4	3.9	2	2.1
Clarendon	-	0	1	1.9	1	2.0
Colleton	1	3.6	1	1.1	3	3.5
Darlington	3	7.1	5	4.0	5	3.8
Dillon	1	5.3	1	1.6	1	1.5
Dorchester	3	2.4	5	1.3	5	1.5
Edgefield	-	0	-	0	2	5.0
Fairfield	-	0	-	0	-	0
Florence	3	3.3	9	3.2	6	2.1
Georgetown	-	0	2	1.7	5	4.1
Greenville	6	1.2	20	1.3	28	2.0
Greenwood	2	3.4	6	3.2	5	2.9
Hampton	-	0	1	2.9	1	2.9
Horry	5	2.0	18	2.3	19	2.7
Jasper	-	0	1	1.4	3	5.0
Kershaw	1	1.9	5	2.9	1	0.6
Lancaster	-	0	1	0.5	7	4.2
Laurens	3	5.0	9	5.0	6	3.4
Lee	-	0	-	0	1	5.4
Lexington	7	2.5	22	2.6	12	1.5
McCormick	-	0	1	12.3	-	0
Marion	1	6.7	3	6.1	2	4.1
Marlboro	-	0	-	0	3	7.5
Newberry	1	3.0	3	2.9	2	2.0
Oconee	2	2.6	5	2.2	4	1.7
Orangeburg	-	0	5	4.1	4	3.3
Pickens	1	0.9	5	1.4	8	2.2
Richland	2	0.9	6	0.9	13	2.1
Saluda	1	5.3	4	6.8	1	1.7
Spartanburg	8	2.8	23	2.7	29	3.6
Sumter	3	3.9	5	2.1	6	2.5
Union	1	4.3	4	6.0	3	4.6
Williamsburg	-	0	1	2.8	1	2.6
York	4	1.8	21	3.1	10	1.6

¹Race of mother

²Rates per 1,000 live births. Rates calculated with 20 or fewer deaths are unreliable and should be used cautiously.

Table 7-B.

Black and Other¹ Postneonatal Mortality and Postneonatal Mortality Rates²
 South Carolina and Each County, 2009, 2007-2009, 2004-2006
 (Residence Data)

County of Residence	2009		2007-2009		2004-2006	
	Number	Rate	Number	Rate	Number	Rate
South Carolina	85	4.0	272	4.1	275	4.4
Abbeville	1	10.9	4	13.7	1	3.4
Aiken	4	6.1	8	4.1	8	4.4
Allendale	1	11.6	6	18.3	2	5.7
Anderson	1	2.1	7	4.7	6	4.4
Bamberg	-	0	-	0	-	0
Barnwell	-	0	1	1.9	2	3.7
Beaufort	1	1.6	6	3.1	3	1.7
Berkeley	1	1.4	8	3.6	9	4.4
Calhoun	-	0	-	0	-	0
Charleston	7	3.5	26	4.2	19	3.3
Cherokee	-	0	2	3.4	7	13.4
Chester	-	0	1	1.5	3	4.8
Chesterfield	1	4.4	2	2.8	-	0
Clarendon	-	0	1	1.4	2	2.8
Colleton	3	12.3	6	7.8	4	5.0
Darlington	3	7.7	5	3.9	8	6.2
Dillon	-	0	2	2.3	4	5.3
Dorchester	1	1.6	3	1.7	2	1.4
Edgefield	-	0	-	0	-	0
Fairfield	-	0	1	1.8	3	4.8
Florence	8	8.0	16	5.2	17	6.0
Georgetown	3	9.5	5	5.1	7	7.6
Greenville	12	8.1	20	4.3	20	4.8
Greenwood	2	5.6	4	3.6	6	6.0
Hampton	-	0	-	0	2	3.8
Horry	2	3.2	7	3.5	10	4.9
Jasper	-	0	2	4.0	2	4.4
Kershaw	-	0	-	0	5	7.6
Lancaster	1	3.6	5	5.8	4	4.8
Laurens	-	0	3	3.7	6	7.8
Lee	1	6	1	1.9	3	5.1
Lexington	4	5.7	11	5.6	11	5.8
McCormick	-	0	-	0	-	0
Marion	1	3.0	5	5.1	6	6.3
Marlboro	-	0	3	4.5	2	2.9
Newberry	-	0	3	5.4	-	0
Oconee	-	0	1	4.4	-	0
Orangeburg	2	2.1	13	4.5	14	5.0
Pickens	-	0	-	0	3	9.3
Richland	10	3.5	34	3.9	36	4.4
Saluda	1	13.9	2	8.9	-	0
Spartanburg	5	4.5	13	4.1	16	5.8
Sumter	2	2.4	14	5.3	13	5.1
Union	2	16.0	2	5.2	-	0
Williamsburg	1	3.2	7	7.1	6	5.9
York	4	5.2	12	5.1	3	1.5

¹Race of mother

²Rates per 1,000 live births. Rates calculated with 20 or fewer deaths are unreliable and should be used cautiously.

Table 8.
Leading Causes of Infant Death by Age at Death
South Carolina, 2009
(Residence Data)

Cause of Infant Death (ICD-10 Codes)	Total	Under 1 Day	1-6 Days	7-27 Days	Neonatal (<28 days)	Post-Neonatal (28-364 days)
Total Infant Deaths	430	164	38	58	260	170
Congenital malformations, deformations, etc. (Q00-Q99)	71	24	7	13	44	27
Disorders related to short gestation and low birthweight, NEC (P07)	68	60	3	-	63	5
Sudden infant death syndrome (R95)	44	-	2	7	9	35
Accidents (V01-X59, Y85-Y86)	33	-	-	2	2	31
Fetus and newborn affected by maternal complications of pregnancy (P01)	28	28	-	-	28	-
Bacterial sepsis of newborn (P36)	14	3	4	7	14	-
Newborn affected by complication of placenta, ect. (P02)	13	11	2	-	13	-
Neonatal hemorrhage (P50-P52, P54)	11	3	7	1	11	-
Diseases of circulatory system (I00-I99)	10	-	-	1	1	9
Assault (Homicide) (X85-Y09, Y87.1)	9	-	-	-	-	9
All other causes	129	35	13	27	75	54

Table 8a.
 Leading Causes of White¹ Infant Death by Age at Death
 South Carolina, 2009
 (Residence Data)

Cause of Infant Death (ICD-10 Codes)	Total	Under 1 Day	1-6 Days	7-27 Days	Neonatal (<28 days)	Post-Neonatal (28-364 days)
Total White Infant Deaths	198	72	21	26	119	79
Congenital malformations, deformations, etc. (Q00-Q99)	34	10	5	7	22	12
Disorders related to short gestation and low birthweight, NEC (P07)	28	27	1	-	28	-
Sudden infant death syndrome (R95)	25	-	2	4	6	19
Accidents (V01-X59, Y85-Y86)	22	-	-	2	2	20
Fetus and newborn affected by maternal complications of pregnancy (P01)	11	11	-	-	11	-
Diseases of circulatory system (I00-I99)	6	-	-	1	1	5
Bacterial sepsis of newborn (P36)	6	3	-	3	6	-
Intrauterine hypoxia and birth asphyxia (P20-P21)	5	2	2	1	5	-
Respiratory distress of newborn (P22)	4	2	-	1	3	1
Pulmonary hemorrhage, etc (P26)	4	-	3	1	4	-
Neonatal hemorrhage (P50-P52, P54)	4	1	3	-	4	-
All other causes	49	16	5	6	27	22

¹ Race of child

Table 8b.
 Leading Causes of Black and Other¹ Infant Death by Age at Death
 South Carolina, 2009
 (Residence Data)

Cause of Infant Death (ICD-10 Codes)	Total	Under 1 Day	1-6 Days	7-27 Days	Neonatal (<28 days)	Post-Neonatal (28-364 days)
Total Black and Other Infant Deaths	232	92	17	32	141	91
Disorders related to short gestation and low birthweight, NEC (P07)	40	33	2	-	35	5
Congenital malformations, deformations, etc. (Q00-Q99)	37	14	2	6	22	15
Sudden infant death syndrome (R95)	19	-	-	3	3	16
Fetus and newborn affected by maternal complications of pregnancy (P01)	17	17	-	-	17	-
Accidents (V01-X59, Y85-Y86)	11	-	-	-	-	11
Newborn affected by complication of placenta, ect. (P02)	10	8	2	-	10	-
Bacterial sepsis of newborn (P36)	8	-	4	4	8	-
Neonatal hemorrhage (P50-P52, P54)	7	2	4	1	7	-
Assault (Homicide) (X85-Y09, Y87.1)	6	-	-	-	-	6
Diseases of circulatory system (I00-I99)	4	-	-	-	-	4
Chronic respiratory disease, etc. (P27)	4	-	-	-	-	4
All other causes	69	18	3	18	39	30

¹ Race of child

Table 8c.
 Percent Changes of Leading Causes of Infant Death
 from 2008 to 2009, South Carolina

Cause of Infant Death Ranked by 2009 Data (ICD-10 Codes)	2008	2009	% Change
Total Infant Death	504	430	-14.7%
Congenital malformations, deformations, etc. (Q00-Q99)	84	71	-15.5%
Disorders related to short gestation and low birthweight, NEC (P07)	69	68	-1.4%
Sudden infant death syndrome (R95)	57	44	-22.8%
Accidents (V01-X59, Y85-Y86)	41	33	-19.5%
Fetus and newborn affected by maternal complications of pregnancy (P01)	53	28	-47.2%
Bacterial sepsis of newborn (P36)	14	14	0.0%
Newborn affected by complication of placenta, ect. (P02)	12	13	8.3%
Neonatal hemorrhage (P50-P52, P54)	8	11	37.5%
Diseases of circulatory system (I00-I99)	14	10	-28.6%
Assault (Homicide) (X85-Y09, Y87.1)	6	9	50.0%
All other causes	146	129	-11.6%

Table 9.

Comparison of Characteristics from Birth Files, by Race¹
 Z-tests for differences in proportions³
 South Carolina, 2008 to 2009
 (Residence Data)

	2008		2009		Z-TEST	P-VALUE
	Percent	Number	Percent	Number		

MOTHER < 18 YEARS						
TOTAL ²	4.16	2,627	3.77	2,289	-3.5354	0.0004
White	2.95	1,203	2.79	1,097	-1.4132	0.1576
Black & Other	6.38	1,424	5.60	1,192	-3.4249	0.0006

MARITAL STATUS: UNMARRIED						
TOTAL ²	47.24	29,797	46.93	28,476	-1.1010	0.2709
White	32.42	13,199	32.29	12,707	-0.3802	0.7038
Black & Other	74.31	16,586	74.03	15,756	-0.6660	0.5054

< 5 PRENATAL CARE VISITS						
TOTAL ²	6.15	3,882	5.80	3,518	-2.6475	0.0081
White	5.21	2,123	5.04	1,983	-1.1216	0.2620
Black & Other	7.87	1,757	7.20	1,532	-2.6625	0.0078

PRENATAL CARE BEGAN FIRST TRIMESTER						
TOTAL ²	68.98	43,513	70.33	42,675	5.1316	0.0000
White	72.57	29,545	74.03	29,129	4.6683	0.0000
Black & Other	62.48	13,946	63.52	13,520	2.2539	0.0242

VERY LOW BIRTHWEIGHT						
TOTAL ²	1.87	1,180	1.83	1,111	-0.5202	0.6029
White	1.25	508	1.20	474	-0.5542	0.5794
Black & Other	3.00	669	2.98	635	-0.0841	0.9330

LOW BIRTHWEIGHT						
TOTAL ²	9.89	6,238	9.98	6,057	0.5411	0.5884
White	7.53	3,065	7.69	3,024	0.8376	0.4023
Black & Other	14.19	3,167	14.23	3,029	0.1283	0.8979

¹Race of mother

²Includes unknown races

³Proportions are expressed as percentages

Table 9. (continued)
 Comparison of Characteristics from Birth Files, by Race¹
 Z-tests for differences in proportions³
 South Carolina, 2008 to 2009
 (Residence Data)

	2008		2009		Z-TEST	P-VALUE
	Percent	Number	Percent	Number		

PREMATURE BIRTHS (< 37 WEEKS)						
TOTAL ²	11.78	7,428	11.71	7,103	-0.3868	0.6989
White	10.40	4,233	10.33	4,066	-0.2958	0.7674
Black & Other	14.29	3,190	14.24	3,031	-0.1514	0.8797

VERY PREMATURE BIRTHS (< 32 WEEKS)						
TOTAL ²	2.04	1,285	1.95	1,184	-1.0821	0.2792
White	1.44	588	1.34	529	-1.2041	0.2285
Black & Other	3.11	694	3.07	653	-0.2482	0.8040

PREMATURE 32-36 WEEKS BIRTHS						
TOTAL ²	9.74	6,143	9.75	5,919	0.0904	0.9280
White	8.95	3,645	8.99	3,537	0.1787	0.8581
Black & Other	11.18	2,496	11.17	2,378	-0.0317	0.9747

KOTELCHUCK INDEX: ADEQUATE, ADEQUATE PLUS						
TOTAL ²	71.63	45,185	73.81	44,791	8.5980	0.0000
White	74.29	30,244	76.23	29,994	6.3634	0.0000
Black & Other	66.82	14,916	69.39	14,769	5.7436	0.0000

KOTELCHUCK INDEX: INTERMEDIATE						
TOTAL ²	7.24	4,565	6.38	3,869	-6.0109	0.0000
White	7.59	3,092	6.67	2,625	-5.0724	0.0000
Black & Other	6.59	1,470	5.84	1,244	-3.2013	0.0014

KOTELCHUCK INDEX: INADEQUATE						
TOTAL ²	20.29	12,799	18.86	11,447	-6.3236	0.0000
White	17.29	7,040	16.19	6,372	-4.1584	0.0000
Black & Other	25.79	5,756	23.81	5,067	-4.7862	0.0000

HISPANIC MOTHER						
TOTAL ²	9.88	6,229	9.16	5,557	-4.2996	0.0000
White	14.74	6,002	13.55	5,331	-4.8446	0.0000
Black & Other	1.02	227	1.06	226	0.4617	0.6443

¹Race of mother

²Includes unknown races

³Proportions are expressed as percentages

Table 9-A.

Comparison of Characteristics of Infants who died, by Race¹
 Z-tests for differences in proportions³
 South Carolina, 2008 to 2009
 (Residence Data)

	2008		2009		Z-TEST	P-VALUE
	Percent	Number	Percent	Number		

MOTHER < 18 YEARS						
TOTAL ²	5.75	29	5.81	25	0.0391	0.9688
White	6.45	16	5.83	12	-0.2762	0.7824
Black & Other	5.10	13	5.80	13	0.3401	0.7338

MARITAL STATUS: UNMARRIED						
TOTAL ²	63.49	320	62.33	268	-0.3679	0.7129
White	46.37	115	47.57	98	0.2555	0.7984
Black & Other	80.39	205	75.89	170	-1.1917	0.2334

< 5 PRENATAL CARE VISITS						
TOTAL ²	30.75	155	29.30	126	-0.4821	0.6297
White	21.77	54	27.18	56	1.3395	0.1804
Black & Other	39.61	101	31.25	70	-1.9049	0.0568

PRENATAL CARE BEGAN FIRST TRIMESTER						
TOTAL ²	57.34	289	57.44	247	0.0310	0.9753
White	60.08	149	56.80	117	-0.7074	0.4793
Black & Other	54.51	139	58.04	130	0.7760	0.4378

VERY LOW BIRTHWEIGHT						
TOTAL ²	56.75	286	52.79	227	-1.2109	0.2259
White	45.56	113	42.23	87	-0.7119	0.4765
Black & Other	67.45	172	62.50	140	-1.1345	0.2566

LOW BIRTHWEIGHT						
TOTAL ²	70.63	356	66.28	285	-1.4300	0.1527
White	61.29	152	57.77	119	-0.7620	0.4461
Black & Other	79.61	203	74.11	166	-1.4281	0.1533

¹Race of mother

²Includes unknown races

³Proportions are expressed as percentages

Table 9-A. (continued)

Comparison of Characteristics of Infants who died, by Race¹
 Z-tests for differences in proportions³
 South Carolina, 2008 to 2009
 (Residence Data)

	2008		2009		Z-TEST	P-VALUE
	Percent	Number	Percent	Number		

PREMATURE BIRTHS (< 37 WEEKS)						
TOTAL ²	70.83	357	66.98	288	-1.2709	0.2038
White	62.10	154	60.19	124	-0.4142	0.6787
Black & Other	79.22	202	73.21	164	-1.5436	0.1227

VERY PREMATURE BIRTHS (< 32 WEEKS)						
TOTAL ²	55.36	279	53.95	232	-0.4295	0.6675
White	45.56	113	44.66	92	-0.1928	0.8471
Black & Other	64.71	165	62.50	140	-0.5009	0.6165

PREMATURE 32-36 WEEKS BIRTHS						
TOTAL ²	15.48	78	13.02	56	-1.0659	0.2865
White	16.53	41	15.53	32	-0.2883	0.7731
Black & Other	14.51	37	10.71	24	-1.2433	0.2138

KOTELCHUCK INDEX: ADEQUATE, ADEQUATE PLUS						
TOTAL ²	62.30	314	63.95	275	0.5214	0.6021
White	64.52	160	59.71	123	-1.0525	0.2926
Black & Other	60.00	153	67.86	152	1.7840	0.0744

KOTELCHUCK INDEX: INTERMEDIATE						
TOTAL ²	5.75	29	3.72	16	-1.4461	0.1481
White	5.65	14	5.34	11	-0.1420	0.8871
Black & Other	5.88	15	2.23	5	-1.9928	0.0463

KOTELCHUCK INDEX: INADEQUATE						
TOTAL ²	26.59	134	27.21	117	0.2137	0.8308
White	23.79	59	28.64	59	1.1732	0.2407
Black & Other	29.41	75	25.89	58	-0.8580	0.3909

HISPANIC MOTHER						
TOTAL ²	7.34	37	7.21	31	-0.0774	0.9383
White	14.52	36	14.08	29	-0.1328	0.8944
Black & Other	0.39	1	0.89	2	0.6931	0.4883

¹Race of mother

²Includes unknown races

³Proportions are expressed as percentages

Table 10.
 Infant Mortality Rates¹ by Race² and Birthweight³ Group
 South Carolina
 2007, 2008, and 2009
 (Residence Data)

Infant Mortality for Very Low Birthweight (0-1499 grams)									
	Total			White			Black & Other		
Year	Number of Live Birth	Number of Infant Death	Rate	Number of Live Birth	Number of Infant Death	Rate	Number of Live Birth	Number of Infant Death	Rate
2007	1,294*	313	241.9	532	121	227.4	758	192	253.3
2008	1,180*	286*	242.4	508	113	222.4	669	172	257.1
2009	1,111*	227	204.3	474	87	183.5	635	140	220.5

Infant Mortality for Intermediate Low Birthweight (1500-2499 grams)									
	Total			White			Black & Other		
Year	Number of Live Birth	Number of Infant Death	Rate	Number of Live Birth	Number of Infant Death	Rate	Number of Live Birth	Number of Infant Death	Rate
2007	5,107*	73	14.3	2,572	45	17.5	2,529	28	11.1
2008	5,058*	70	13.8	2,557	39	15.3	2,498	31	12.4
2009	4,946*	58	11.7	2,550	32	12.5	2,394	26	10.9

Infant Mortality for Normal Birthweight (2500+ grams)									
	Total			White			Black & Other		
Year	Number of Live Birth	Number of Infant Death	Rate	Number of Live Birth	Number of Infant Death	Rate	Number of Live Birth	Number of Infant Death	Rate
2007	56,513*	147	2.6	37,530	82	2.2	18,963	65	3.4
2008	56,796*	142	2.5	37,626	93	2.5	19,138	49	2.6
2009	54,563*	141	2.6	36,268	84	2.3	18,238	57	3.1

¹Rates per 1,000 live births

²Race of mother

³Does not include missing birthweights

*Includes unknown race

Table 10-A.
 Neonatal Mortality Rates¹ by Race² and Birthweight³ Group
 South Carolina
 2007, 2008, and 2009
 (Residence Data)

Neonatal Mortality for Very Low Birthweight (0-1499 grams)									
	Total			White			Black & Other		
Year	Number of Live Birth	Number of Infant Death	Rate	Number of Live Birth	Number of Infant Death	Rate	Number of Live Birth	Number of Infant Death	Rate
2007	1,294*	269	207.9	532	109	204.9	758	160	211.1
2008	1,180*	236*	200.0	508	97	190.9	669	138	206.3
2009	1,111*	191	171.9	474	82	173.0	635	109	171.7

Neonatal Mortality for Intermediate Low Birthweight (1500-2499 grams)									
	Total			White			Black & Other		
Year	Number of Live Birth	Number of Infant Death	Rate	Number of Live Birth	Number of Infant Death	Rate	Number of Live Birth	Number of Infant Death	Rate
2007	5,107*	41	8.0	2,572	25	9.7	2,529	16	6.3
2008	5,058*	35	6.9	2,557	21	8.2	2,498	14	5.6
2009	4,946*	24	4.9	2,550	13	5.1	2,394	11	4.6

Neonatal Mortality for Normal Birthweight (2500+ grams)									
	Total			White			Black & Other		
Year	Number of Live Birth	Number of Infant Death	Rate	Number of Live Birth	Number of Infant Death	Rate	Number of Live Birth	Number of Infant Death	Rate
2007	56,513*	44	0.8	37,530	31	0.8	18,963	13	0.7
2008	56,796*	37	0.7	37,626	26	0.7	19,138	11	0.6
2009	54,563*	42	0.8	36,268	24	0.7	18,238	18	1.0

¹Rates per 1,000 live births

²Race of mother

³Does not include missing birthweights

*Includes unknown race

Table 10-B.
 Postneonatal Mortality Rates¹ by Race² and Birthweight³ Group
 South Carolina
 2007, 2008, and 2009
 (Residence Data)

Postneonatal Mortality for Very Low Birthweight (0-1499 grams)									
	Total			White			Black & Other		
Year	Number of Live Birth	Number of Infant Death	Rate	Number of Live Birth	Number of Infant Death	Rate	Number of Live Birth	Number of Infant Death	Rate
2007	1,294*	44	34.0	532	12	22.6	758	32	42.2
2008	1,180*	50	42.4	508	16	31.5	669	34	50.8
2009	1,111*	36	32.4	474	5	10.5	635	31	48.8

Postneonatal Mortality for Intermediate Low Birthweight (1500-2499 grams)									
	Total			White			Black & Other		
Year	Number of Live Birth	Number of Infant Death	Rate	Number of Live Birth	Number of Infant Death	Rate	Number of Live Birth	Number of Infant Death	Rate
2007	5,107*	32	6.3	2,572	20	7.8	2,529	12	4.7
2008	5,058*	35	6.9	2,557	18	7.0	2,498	17	6.8
2009	4,946*	34	6.9	2,550	19	7.5	2,394	15	6.3

Postneonatal Mortality for Normal Birthweight (2500+ grams)									
	Total			White			Black & Other		
Year	Number of Live Birth	Number of Infant Death	Rate	Number of Live Birth	Number of Infant Death	Rate	Number of Live Birth	Number of Infant Death	Rate
2007	56,513*	103	1.8	37,530	51	1.4	18,963	52	2.7
2008	56,796*	105	1.8	37,626	67	1.8	19,138	38	2.0
2009	54,563*	99	1.8	36,268	60	1.7	18,238	39	2.1

¹Rates per 1,000 live births

²Race of mother

³Does not include missing birthweights

*Includes unknown race

Figure 1
Percentage of Infant Deaths by Birthweight Group
South Carolina, 2007-2009 Residence Data

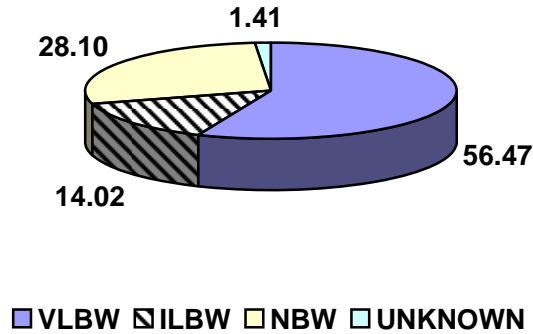


Figure 1-A
Percentage of White Infant Deaths by Birthweight Group
South Carolina, 2007-2009 Residence Data

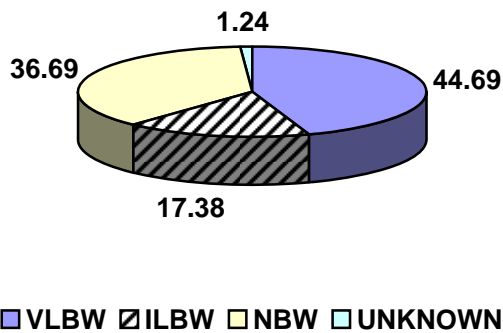


Figure 1-B
Percentage of Black and Other Infant Deaths by Birthweight Group
South Carolina, 2007-2009 Residence Data

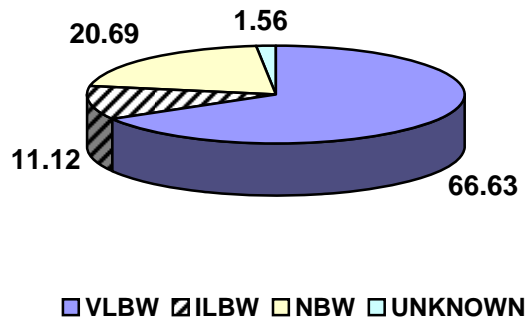
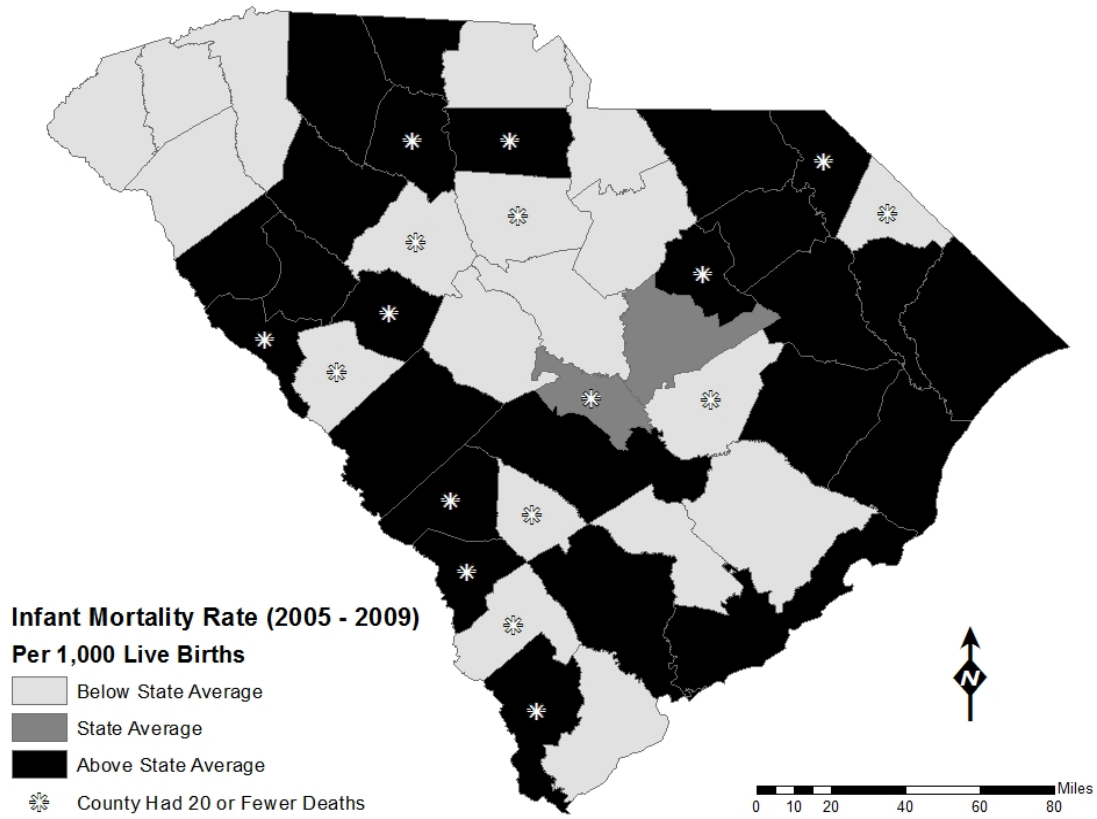


Figure 2.
Five Year Infant Mortality Rates by County
South Carolina
2005-2009
(Residence Data)



Source: SC DHEC: PHSIS- Division of Biostatistics

Map Source: SC DHEC: PHSIS- Division of Public Health Informatics